



• GEMINI BUILDING •
408 N. ADAMS STREET TALLAHASSEE, FL 32301
www.crtpa.org

CRTPA BOARD

MEETING OF MONDAY, JUNE 29, 2015 AT 1:00 PM

CITY OF TALLAHASSEE COMMISSION CHAMBERS
300 S. ADAMS STREET
TALLAHASSEE, FL 32301

MISSION STATEMENT

"The mission of the CRTPA is to act as the principal forum for collective transportation policy discussions that results in the development of a long range transportation plan which creates an integrated regional multimodal transportation network that supports sustainable development patterns and promotes economic growth."

FINAL AGENDA

1. AGENDA MODIFICATIONS

- Agenda Item 5G: modify item to include a discussion and vote on whether or not to offer the new Executive Director a contract.

2. CONSENT AGENDA

- A. Minutes of the May 19, 2015 CRTPA Board Meeting**
- B. Fiscal Year 2016 Transportation Disadvantaged Planning Services Grant**
- C. 2015 CRTPA Calendar Revision**

Recommended Action: <i>Approve consent agenda</i>
--

3. CONSENT ITEMS PULLED FOR DISCUSSION

4. ROLL CALL VOTE AGENDA ITEMS**A. Fiscal Year (FY) 2016 – FY 2020 Transportation Improvement Program (TIP) Adoption**

The CRTPA FY 2016 – FY 2020 TIP has been developed for Board adoption. The TIP contains those projects that have received funding in the Florida Department of Transportation's FY 2016 – FY 2020 Work Program.

Recommended Action: *Approve agenda item by roll call vote*

5. CRTPA DISCUSSION

The public is welcome to comment on any discussion item after a motion has been made and seconded. Each member of the public is provided three (3) minutes to address the CRTPA.

A. Connections 2040 Regional Mobility Plan (RMP) Final Bike/Pedestrian and Roadway Cost Feasible Plans

The RMP Final Bike/Pedestrian and Roadway Cost Feasible Plans has been developed through the matching of anticipated revenue with the eligible transportation projects that have been previously been scored using the approved prioritization process.

Recommended Action: *For Board Approval*

B. CRTPA Fiscal Year (FY) 2017 – FY 2021 Priority Project Lists

Annually, the CRTPA adopts Priority Project Lists (PPLs) in ranked order to provide the FDOT project funding direction as the state agency proceeds with the annual development of the State Work Program. This year, the following PPLs have been developed for CRTPA Board approval:

1. **Regional Mobility Plan (RMP) Roadways Priority Project List**
2. **Regional Mobility Plan (RMP) Bicycle and Pedestrian Priority Project List**
3. **Transportation Systems Management (TSM) Priority Project List**
4. **Regional Mobility Plan (RMP) Strategic Intermodal System (SIS) Priority Project List**
5. **StarMetro Priority Project List**
6. **Tallahassee International Airport Priority Project List**

Recommended Action: *For Board Approval*

C. Capital City to the Sea - Coastal Trail Project Development and Environment (PD&E) Study

The Coastal Trail PD&E Study is completed and will be presented along with comments from the public meeting held on June 22, 2015 for CRTPA Board for approval.

Recommended Action: *For Board Approval*

D. Jefferson County Transportation Plan Technical Assistance

This item seeks approval of funding to assist Jefferson County with development of the County's Transportation Plan.

Recommended Action: *For Board Approval*

E. 2014 CRTPA Financial Statements

The 2014 CRTPA Financial Statements has been developed for CRTPA adoption.

Recommended Action: *For Board Approval*

F. Thomasville Road Planning Study and Welaunee Interchange Update

Florida Department of Transportation (FDOT) consultant staff along with City of Tallahassee consultant staff will provide an update on a recently initiated FDOT planning study for Thomasville Road vicinity addressing congestion and its coordination with the Welaunee Interchange development.

Recommended Action: *For Board Information*

G. Executive Director Transition Update

An update on actions taken at the June 25, 2015 CRTPA Executive Committee associated with the transition plan for the Executive Director of the CRTPA will be provided.

Recommended Action: *For Board Information*

6. EXECUTIVE DIRECTOR'S REPORT

A status report on the activities of the Capital Region Transportation Planning Agency (CRTPA) and other items of interest will be provided.

- FDOT – Candidate resurfacing projects in Leon County.

Recommended Action: *For Board Information*

7. ITEMS FROM MEMBERS

This portion of the agenda is provided to allow members an opportunity to discuss issues relevant to the CRTPA.

8. CITIZEN COMMENT

This portion of the agenda is provided to allow for citizen input on any CRTPA issue. Those interested in addressing the CRTPA should complete a speaker request form located at the rear of the meeting room. Speakers are requested to limit their comments to three (3) minutes.

9. INFORMATION

- A. Correspondence
- B. Committee Actions (Citizen's Multimodal Advisory Committee/ Technical Advisory Committee/Transportation Disadvantaged Coordinating Board)
- C. Future Meeting Dates and Agenda Items (Next Meeting: August 31, 2015)
- D. CRTPA Expense Reports

Recommended Action: *Information only - No action required*



June 29, 2015

AGENDA ITEM 1

AGENDA MODIFICATIONS



June 29, 2015

AGENDA ITEM 2 A

MINUTES

REQUESTED BY: CRTPA Staff

TYPE OF ITEM: Consent

The minutes from the May 19, 2015 CRTPA meeting are provided as ***Attachment 1***.

RECOMMENDED ACTION

Option 1: Approve the minutes of the May 19, 2015 CRTPA Board meeting.

ATTACHMENT

Attachment 1: Minutes of the May 19, 2015 CRTPA Board meeting.



CRTPA BOARD

MEETING OF MONDAY, MAY 18, 2015 AT 1:00 PM

**CITY OF TALLAHASSEE COMMISSION CHAMBERS
300 S. ADAMS STREET
TALLAHASSEE, FL 32301**

MEETING MINUTES

MEMBERS PRESENT

Commissioner Kristin Dozier, Leon County, Chair
Commissioner Betsey Barfield, Jefferson County, Vice Chair
Commissioner John Dailey, Leon County
Commissioner Mary Ann Lindley, Leon County
Commissioner Nick Maddox, Leon County
Commissioner Bryan Desloge, Leon County
Commissioner Nancy Miller, City of Tallahassee
Commissioner Curtis Richardson, City of Tallahassee
Commissioner Scott Maddox, City of Tallahassee
Commissioner Randy Merritt, Wakulla County
Commissioner Anthony Viegbesie, Gadsden County
Commissioner Georgia "Joy" Bowen, Leon County Schools

Members Absent:

Commissioner Bill Proctor, Leon County

Staff Present: Thornton Williams, CRTPA Attorney; Ivan Maldonado, StarMetro; Wayne Tedder, PLACE; Greg Burke, CRTPA; Colleen Roland, CRTPA; Harry Reed, CRTPA; Lynn Barr, CRTPA; Jack Kostrzewa, CRTPA; Yulonda Mitchell, CRTPA; Tony Park, Leon County Public Works; Starsky Harrell, FDOT; Richard Barr, KHA, Cherie Bryant, PLACE

1. AWARDS AND SPECIAL PRESENTATIONS

- **CRTPA Recognition to Ms. Delores Madison of Midway**

2. AGENDA MODIFICATIONS

Addition of Agenda Item 5.E (Transition Plan for Executive Director)

Board Action: Commissioner Merritt made a motion to accept the Agenda as modified, adding Agenda Item 5.E. Commissioner Barfield seconded the motion. The motion was unanimously passed.

3. CONSENT AGENDA

A. Minutes of the April 20, 2015 CRTPA Board Meeting

B. Draft Fiscal Year (FY) 2016 – FY 2020 Transportation Improvement Program (TIP)

The Draft FY 2016 – FY 2020 TIP was developed incorporating state and federally funded projects in the CRTPA region. The TIP was presented to the board.

Board Action: *Commissioner Scott Maddox made a motion to accept the consent agenda as presented by staff. Commissioner Barfield seconded the motion. The motion was unanimously passed.*

4. CONSENT ITEMS PULLED FOR DISCUSSION**5. CRTPA DISCUSSION****A. Connections 2040 Regional Mobility Plan (RMP) Draft Final Bike/ Pedestrian and Roadway Cost Feasible Plans**

The RMP Draft Bike/Pedestrian and Roadway Final Cost Feasible Plans were presented. The plans match anticipated revenue with the eligible transportation projects that have been previously been scored using the approved prioritization process.

Board Action: *Commissioner Dailey made a motion to approve the Connections 2040 Regional Mobility Plan Draft Bike/Pedestrian and Roadway Cost Feasible Plans. Commissioner Merritt seconded the motion. The motion was unanimously passed.*

B. Capital City to the Sea - Coastal Trail

The Coastal Trail Project Development and Environment (PD&E) Study began in March of 2014. Kimley-Horn and Associates, PD&E Consultant, presented the findings from the study to the CRTPA Board for approval.

Board Action: *Commissioner Merritt made a motion to accept the Capital City to the Sea-Coastal Trail. Commissioner Barfield seconded the motion. The motion was unanimously passed.*

C. Election of MPOAC Representative

As provided for in Florida State Statute and CRTPA By-Laws, a representative and alternate to the Florida Metropolitan Planning Organization Advisory Council (MPOAC) are elected by the CRTPA Board. The current MPOAC representative, Ms. Delores Madison of Midway, is no longer eligible to serve as the representative from CRTPA. A new MPOAC representative is required to serve the remainder of her term.

Board Action: *Commissioner Merritt made a motion to appoint the current alternate Commissioner Nick Maddox serve as the Florida Metropolitan Planning Organization Advisory Council (MPOAC) Representative. Commissioner Scott Maddox seconded the motion. The motion was unanimously passed.*

Board Action: *Commissioner Lindley nominated Commissioner Barfield as the Florida Metropolitan Planning Organization Advisory Council (MPOAC) Alternate. Commissioner Scott Maddox seconded the motion. The motion was unanimously passed.*

D. Florida Transportation Plan and Strategic Intermodal Plan Update

Staff from the Florida Department of Transportation made a presentation on the updates underway for the Florida Transportation Plan (FTP) and Strategic Intermodal System (SIS) Policy Plan.

Board Action: This item was an informational item; therefore, no action was taken.

E. Transition Plan for Executive Director

A transition plan for the Executive Director of the CRTPA was presented to the Board for approval. The transition plan outlines the actions needed to identify a new Executive Director by the end of the calendar year when the current Executive Director retires.

Commissioner Dozier provided information regarding the Transition Plan. The board would form an Executive Committee consisting of Chair, Kristen Dozier (Leon County); Vice-Chair, Betsey Barfield (Jefferson County); Past Chair, Randy Merritt (Wakulla County); Commissioner Viegbesie (Gadsden County), and would need to appoint a City of Tallahassee appointee, to have full representation on the committee. The plan indicates the Executive Committee would be required to meet at least 3 times. She noted the committee should review other MPOs regarding the Management structures in other areas. She listed job description, benefits, salary, etc. as things that would be reviewed during this time.

The Board discussed the item. The general consensus of the Board was that the Executive Committee would be responsible for the selection of the new Executive Director and provide updates to the Board of the committee's progress. The recommendation of the Executive Committee could come back to the full board for confirmation. Commissioner Miller was nominated as the City of Tallahassee representative on the Executive Committee.

Board Action: *Commissioner Scott Maddox made a motion to approve the Transition Plan for the CRTPA Executive Director, with the appointment of Commissioner Miller (City of Tallahassee) and Commissioner Viegbesie (Gadsden County). Commissioner Viegbesie seconded the motion. The motion was passed with Commissioner Nick Maddox voting in opposition.*

6. EXECUTIVE DIRECTOR'S REPORT

- Oral report on the May 14, 2015 meeting with FDOT consultant contracted to conduct a planning study of potential improvements to address congestion on Thomasville Road and the I-10 interchange.

Board Action: This item was an informational item; therefore, no action was taken.

7. ITEMS FROM MEMBERS

8. CITIZEN COMMENT

9. INFORMATION

- A. Correspondence
- B. Committee Actions (Citizen's Multimodal Advisory Committee/ Technical Advisory Committee/Transportation Disadvantaged Coordinating Board)
- C. Future Meeting Dates and Agenda Items (Next Meeting: June 29, 2015)
- D. CRTPA Expense Reports

Attested:

Yulonda Mitchell, Recording Secretary

Kristin Dozier, Chair



June 29, 2015

AGENDA ITEM 2 B

ANNUAL TRANSPORTATION DISADVANTAGED PLANNING SERVICES GRANT FOR GADSDEN, JEFFERSON, LEON AND WAKULLA COUNTIES

REQUESTED BY: Staff

TYPE OF ITEM: Consent

STATEMENT OF ISSUE

The purpose of this item is to approve submission of a grant to the Florida Commission for the Transportation Disadvantaged.

RECOMMENDED ACTION

Option 1: Approve a resolution and direct staff to execute other appropriate documents authorizing the submittal of a Transportation Disadvantaged Trust Fund Grant with the Florida Commission for the Transportation Disadvantaged.

HISTORY AND ANALYSIS

Florida State Statutes Chapter 427.11 provides funding for Metropolitan Planning Organizations providing staff support to local Transportation Disadvantaged Coordinating Boards.

The funding is allocated by a formula based on population. The Capital Region Transportation Planning Agency (CRTPA) will receive about \$86,000 for next year. It will be used to provide partial salary to employees staffing the Transportation Disadvantaged Coordinating Boards in Gadsden, Jefferson, Leon and Wakulla Counties.

Approval and transmittal of the grant application is by resolution. Upon receipt of the resolution, the contract can be executed. The resolution is enclosed as Attachment 1.

RECOMMENDED ACTION

Option 1: Approve a resolution and direct staff to execute other appropriate documents authorizing the submittal of a Transportation Disadvantaged Trust Fund Grant with the Florida Commission for the Transportation Disadvantaged.

(Recommended)

Option 2: Provide other direction.

ATTACHMENT

Attachment 1: Authorizing resolution



Authorizing Resolution 2015-6-2C

A RESOLUTION of the Capital Region Transportation Planning Agency hereby referred to as the "CRTPA" authorizing the submittal and execution of a Transportation Disadvantaged Trust Grant Application with the Florida Commission for the Transportation Disadvantaged.

WHEREAS, the CRTPA has the authority to file a Transportation Disadvantaged Trust Fund Grant Application and to undertake transportation disadvantaged service planning as authorized by Section 427.0159 Florida Statutes and Rule 41-2, Florida Administrative Code.

NOW THEREFORE, BE IT RESOLVED BY THE CRTPA THAT:

1. The CRTPA has the authority to file this grant application.
2. The CRTPA authorizes the Executive Director or his/her designee to sign any and all agreements or contract that is requested in connection with this application.
3. The CRTPA authorizes the Executive Director or his/her designee to file and execute the application on behalf of the CRTPA with the Florida Commission for the Transportation Disadvantaged.
4. The CRTPA authorizes the Executive Director to sign any and all assurances, reimbursement invoices, warranties, certification and other documents that may be required in connection with the application or subsequent agreements.

DULY PASSED AND ADOPTED THIS 29th Day of June, 2015.

Capital Region Transportation Planning Agency

By: _____
Kristin Dozier, Chair

Attest: _____
Harry D. Reed III,
CRTPA Executive Director



June 29, 2015

AGENDA ITEM 2 C

2015 CRTPA CALENDAR REVISION

REQUESTED BY: Staff

TYPE OF ITEM: Consent

STATEMENT OF ISSUE

The adopted 2015 CRTPA Calendar identifies a meeting on August 31, 2015. Given the current status of the agency's Regional Mobility Plan (RMP) Update, this meeting is no longer be required to meet project deadlines. As a result, this item proposes removal of the August 31 meeting from the CRTPA's 2015 Calendar.

RECOMMENDED ACTION

Option 1: Remove the August 31, 2015 CRTPA meeting from the CRTPA 2015 Calendar.

HISTORY AND ANALYSIS

Pursuant to the CRTPA's adopted 2015 calendar, subsequent to the June 29, 2015 CRTPA meeting, there remain four (4) CRTPA meetings (including a retreat). Of these meetings, the next scheduled one is on August 31.

2015 CRTPA Calendar (Remaining Meetings)

Meeting Date
August 31
September 21
October 19 (CRTPA Retreat)
November 16

The August 31 meeting was originally scheduled in order to provide sufficient meetings, if required, related to the development of the agency's RMP Update. However, given the RMP's current schedule, this meeting is no longer required.

If removed, the next scheduled meeting on the CRTPA calendar will occur on September 21, 2015.

RECOMMENDED ACTION

Option 1: Remove the August 31, 2015 CRTPA meeting from the CRTPA 2015 Calendar.
(Recommended)

Option 2: Provide other direction.



June 29, 2015

AGENDA ITEM 3

CONSENT ITEMS PULLED FOR DISCUSSION



June 29, 2015

AGENDA ITEM 4 A

FISCAL YEAR (FY) 2016 – FY 2020 TRANSPORTATION IMPROVEMENT PROGRAM (TIP)

REQUESTED BY: Staff

TYPE OF ITEM: Roll Call Vote

STATEMENT OF ISSUE

Consistent with state and federal requirements, the Fiscal Year (FY) 2016 – FY 2020 Transportation Improvement Program (TIP) has been developed (**Attachment 1**: document link is located on the agency's homepage: www.crtpa.org) for Capital Region Transportation Planning Agency (CRTPA) adoption.

Special Note: \$38.8 million in Local Funds (Blueprint 2000) have been identified in FY 19 & 20 for Right of Way and Construction of Capital Circle (US 319/SR 263): Crawfordville Road (SR 61) to Springhill Road. These funds have not been formally committed by the Blueprint IA and should not, at this time, be considered a reliable source of funding until formal commitment action is taken.

CRTPA COMMITTEE ACTIONS

The CRTPA's two (2) committees (Citizens Multimodal Advisory Committee and Technical Advisory Committee) were scheduled to meet on June 23, 2015. Due to the development and distribution of the CRTPA agenda prior to the committee meetings, committee recommendations for this and other agenda items will be provided under separate cover prior to the meeting.

RECOMMENDED ACTION

Option 1: Adopt by resolution the FY 2016 – FY 2020 Transportation Improvement Program

HISTORY AND ANALYSIS

The CRTPA Transportation Improvement Program identifies regional transportation projects (roadway, bicycle and pedestrian, transportation systems management, transportation enhancement, public transportation, aviation, resurfacing and bridge projects) that have received funding in the Florida Department of Transportation's (FDOT) Five-Year Work Program. The TIP is developed in

accordance with 23 U.S.C. 134(h), 23 CFR 450 and Chapter 339.175(7), F.S., and is one of the annual requirements of the metropolitan transportation planning process for the CRTPA.

The purpose of the TIP is to inform the public and governmental agencies of transportation projects (planning through construction) that have received funding during the next five-year period (FY 2016 – FY 2020) within our region (Gadsden, Jefferson, Leon and Wakulla counties).

Projects contained within the FY 2016 – FY 2020 TIP reflect those projects that were presented to the CRTPA Board on January 12, 2015 by the FDOT District 3 during their presentation of the FDOT Draft FY 2016 – FY 2020 Five-Year Work Program. The following contains a summary of the new or changed projects that are included in the FY 2016 – FY 2020 TIP:

NEW PROJECTS

Gadsden County:

- ❑ Interstate 10 (SR 8) Ramp to Rest Area over I-10 Bridge# 500075 & 500076. **Bridge Repair/Rehabilitation** (PE) in FY 16 (\$77,000) (2225392).
- ❑ Interstate 10 (SR 8): west of Flat Creek Road (CR 270A) to west of Pat Thomas Parkway (SR 267). **Resurfacing** (PE, CST) in FY 16 & 18 (\$12.2 million) (4366631).
- ❑ Quincy Loop North: SR 12 to SR 267. **PD&E/EMO Study** (PDE) in FY 16 (\$550,000) (2189464).
- ❑ Quincy Loop South: SR 267 to US 90 East. **PD&E/EMO Study** (PDE) in FY 16 (\$825,000) (2189465).
- ❑ Pat Thomas Parkway (SR 267): south of I-10 to Jefferson Street (US 90/SR 10A). **Resurfacing** (PE, CST) in FY 16 & 18 (\$5.4 million) (4362681).
- ❑ Adams Street (CR 268): Martin Luther King Jr Boulevard (CR 274) to Clark Street. **Sidewalk** (PE) in FY 19 (\$49,000) (4369921).
- ❑ High Bridge Road (CR 268): Joe Adams Road to Brickyard Road. **Widen/Resurface Existing Lanes** (PE) in FY 18 (\$300,000) (4366151).
- ❑ Juniper Creek Road (CR 65A) over Juniper Creek Bridge No. 504050. **Bridge Replacement** (PE) in FY 16 (\$704,000) (4358021).
- ❑ Old Federal Road (CR 65B): north of SR 267 to High Bridge Road (CR 268). **Widen/Resurface Existing Lanes** (CST) in FY 18 (\$2.4 million) (4368441).
- ❑ Howell Road: Mt Pleasant Road to US 90 (SR 10). **Resurfacing** (CST) in FY 17 (\$99,000) (4367251).
- ❑ McPhaul Road: Atwater Road to west of Left Hand Drive. **Flexible Pavement Reconstruction** (CST) in FY 16 (\$419,000) (4368271).

Jefferson County:

- ❑ Waukeelah Highway (CR 259): US 19 (SR 57) to north of I-10 (SR 8) Overpass. **Widen/Resurface Existing Lanes** (CST) in FY 18 (\$1.2 million) (4368461).
- ❑ Big Joe Road: Aucilla Highway (CR 158) to US 90 (SR 10). **Widen/Resurface Existing Lanes** (CST) in FY 16 (\$898,000) (4368251).
- ❑ Curtis Mill Road over Buggs Creek Bridge No. 544077. **Bridge Replacement** (PE, ROW & CST) in FY 16, 18 & 20 (\$1.8 million) (4357821).
- ❑ Pinhook Road: Gamble Road (SR 59) to Waukeelah Highway (CR 259). **Resurfacing** (CST) in FY 18 (\$158,000) (4366681).
- ❑ St. Augustine Road: Gamble Road (SR 59) to Armstrong Road. **Resurfacing** (CST) in FY 17 (\$472,000) (4367231).

Leon County:

- ❑ Interstate 10 (SR 8) at SR 263 (Capital Circle, NW) & SR 61 (US 319) Interchange Studies. **PD&E/EMO Study** (PE) in FY 20 (\$2,200,000) (2225935).
- ❑ Adams Street Railroad Crossing (No. 625587-U). **Rail Safety Project** (RRU) in FY 16 (\$357,000) (4365701).
- ❑ US 90 (SR 10): east of CR 59 to Jefferson County line. **Pave Shoulders** (CST) in FY 17 (\$1.5 million) (4134483).
- ❑ US 90 (SR 10): Ochlockonee River Bridge to Poplar Road. **Resurfacing** (PE, CST) in FY 16 & 18 (\$3.1 million) (4362571).
- ❑ Capital Circle (US 319/SR 261): Woodville Highway (SR 363) to Tram Road. **Landscaping** (CST) in FY 17 (\$789,000) (2196893).
- ❑ Capital Circle (US 319/SR 263): Crawfordville Road (SR 61) to Springhill Road. **Preliminary Engineering** for Future Capacity (ROW, CST) in FY 19 & 20 (\$38.8 million – *NOTE: The identified funding represents Blueprint 2000 funds which have not been formally committed*) (2197492).
- ❑ Wakulla Springs Road (SR 61) @ Oak Ridge Road Intersection. **Roundabout** (PE, CST) in FY 16 & 18 (\$958,000) (4367261).
- ❑ Monroe Street (US 27/SR 63): John Knox Road to Thomasville Road (SR 61). **Resurfacing** (PE, CST) in FY 16 & 18 (\$3.8 million) (4325591).
- ❑ Monroe Street (US 27/SR 63): south of Lakeshore Drive to north of John Knox Road. **Add Right Turn Lane** (CST) in FY 16 (\$1.7 million) (4104092).
- ❑ Seventh Avenue: Colonial Drive to Thomasville Road (SR 61). **Sidewalk** (CST) in FY 16 (\$301,000) (4371441).
- ❑ Weems Road Railroad Crossing No. 625577N. **Rail Safety Project** (RRU) in FY 16 (\$282,000) (4365721).
- ❑ County Wide Railroad Crossing Signal Keydowns. **Rail Safety Project** (RRU) in FY 16 (\$50,000) (4365731).
- ❑ Glenview Drive: Meridian Road to Thomasville Road (Phase I - Design). **Sidewalk** (PE) in FY 18 (\$37,000) (436991).
- ❑ Myers Park Railroad Crossing No. 625584Y. **Rail Safety Project** (RRU) in FY 16 (\$257,000) (4365711).

Wakulla County:

- ❑ SR 30 (US 98) Coastal Highway: Davisville Way to SR 363 (Woodville Highway). **Bike Path/Trail** (CST) in FY 20 (\$1.7 million) (4301466)
- ❑ SR 30 (US 98) Coastal Highway: Horttor Greene Road to Davisville Way. **Bike Path/Trail** (CST) in FY 19 (\$1.6 million) (4301465)
- ❑ SR 30 (US 98) Coastal Highway: St. Frances Street to Horttor Greene Road. **Bike Path/Trail** (CST) in FY 2018 (\$1.2 million) (4301464)
- ❑ SR 30 (US 98/US 319): Boykin Road to SR 369. **Resurfacing** (PE, CST) in FY 16 & 18 (\$4.5 million) (4362612).
- ❑ SR 30/SR 61 (US 98) SR 30/SR 61 (US 98) Coastal Highway: Boykin Road to SR 363 (Woodville Highway). **Bike Path/Trail** (PE) in FY 16 (\$870,000) (4301462)
- ❑ SR 30/SR 61 (US 98) Coastal Highway: Boykin Road to St. Frances Street. **Bike Path/Trail** (CST) in FY 17 (\$1.4 million) (4301463).
- ❑ SR 30/SR 61 (US 98) Coastal Highway: north of Mound Street to south of Post Office. **Sidewalk** (PE, CST) in FY 18 & 19 (\$320,000) (4370891)
- ❑ SR 30/SR 61 (US 98) Coastal Highway: Franklin County line to Boykin Road. **Resurfacing** (PE, CST) in FY 16 & 18 (\$4.3 million) (4362611)
- ❑ US 319 (SR 369): East Ivan Road to north of SR 267. **Add Lanes & Reconstruct** (ENV, CST) in FY 16 & 18 (\$18 million) (2204957).
- ❑ US 319 (SR 369): north of SR 267 to Leon County line. **Add Lanes & Reconstruct** (ENV, CST) in FY 16 & 18 (\$19.2 million) (2204958).
- ❑ US 319 (SR 61): US 98 (SR 30) to Lost Creek Bridge. **Preliminary Engineering for Future Capacity** (PE) in FY 17 (\$2.8 million) (2204954).
- ❑ US 319 (SR 61 & 39): Lost Creek Bridge to south of East Ivan Road. **Right of Way for Future Capacity** (PE) in FY 17 (\$3.8 million) (2204953).
- ❑ Smith Creek Road (CR 375): north of CR 22 to north of Syfrett Creek. **Widen/Resurface Existing Lanes** (CST) in FY 17 (\$1.049 million) (4368351).
- ❑ Lawhon Mill Road (FH356) over Unsigned Stream Bridge No. 594005. **Bridge Replacement** (PE, ROW & CST) in FY 16, 18 & 20 (\$1.28 million) (4358001).
- ❑ Martin Luther King, Jr., Memorial Road: Spring Creek Highway (CR 365) to US 98 (CR 30). **Resurfacing** (CST) in FY 18 (\$1.5 million) (4366911).

REGIONAL (Gadsden, Jefferson, Leon and Gadsden counties)

- ❑ CRTPA Bicycle/Pedestrian Projects (annual set aside). Funding Action in FY 20 (\$1.4 million) (4098036).

CHANGED PROJECTS

Gadsden County:

- ❑ NONE

Jefferson County:

- ❑ Mamie Scott Drive: Mississippi Street to Texas Hill Road. **Sidewalk (Construction)** deferred from FY 15 to FY 16 (\$502,000) (4317431).

Leon County:

- ❑ Capital Circle (SR 263): Springhill Road to Orange Avenue (SR 371). Portion of **Right of Way** funding deferred from FY 16 to FY 17 (\$8.6 million in FY 16 and FY 17) (4157829).
- ❑ 6th Avenue Sidewalk Project. **Bike Lane/Sidewalk** right of way funding deleted in FY 16 (\$550,000) (4301471).

Wakulla County:

- ❑ US 319 (SR 369): East Ivan Road to north of SR 267. **Add Lanes & Reconstruct** (ROW). Project advanced from FY 17, 18 & 19 to FY 16, 17 & 18 (\$8.2 million) (2204957).
- ❑ US 319 (SR 61) @ Wakulla/Arran Road Intersection. **Intersection Improvement** (CST). Project deleted in FY 16 due to project being incorporated in larger capacity project on corridor (\$669,000) (4319481).

* PROJECT PHASES ABBREVIATION KEY:

PLN = Planning; PE = Preliminary Engineering (Design); CST = Construction; ROW = Right of Way; ENV = Environment; RRU = Rail Road/Utilities

PUBLIC COMMENTS

Public meetings to present the Transportation Improvement Program (and the agency's FY 2017–2021 Priority Project Lists) were held on June 10 & 11, 2015 throughout the CRTPA Region (Monticello, Crawfordville, Quincy and Tallahassee). Information regarding the meeting was published in the region's newspapers, placed on the CRTPA's website (www.crtpa.org) and an e-mail message regarding the meeting was sent to the agency's transportation partners. **Attachment 3** provides the comments received related to the TIP.

NEXT STEP

Subsequent to CRTPA Board adoption of the TIP, staff will transmit the document to the Florida Department of Transportation.

RECOMMENDED ACTION

Option 1: Adopt the FY 2016 – FY 2020 Transportation Improvement Program
(Recommended)

Option 2: Provide other direction.

ATTACHMENT

Attachment 1: LINK to FY 2016 – FY 2020 Transportation Improvement Program (document link located on www.crtpa.org homepage or directly at: <http://crtpa.dtstiptool.com/Document/Show/1278>).

Attachment 2: Adoption Resolution

Attachment 3: Public comments received

ATTACHMENT 1

FY 2016 – FY 2020

TRANSPORTATION IMPROVEMENT PROGRAM (TIP)

TO VIEW:

www.crtpa.org (AND
CLICK ON TIP LINK)

OR

VIEW DIRECTLY AT:

[http://crtpa.dtstiptool.co
m/Document/Show/1278](http://crtpa.dtstiptool.com/Document/Show/1278)

CRTPA RESOLUTION 2015-06-4A

A RESOLUTION OF THE CAPITAL REGION TRANSPORTATION PLANNING AGENCY (CRTPA) ENDORSING THE FY 2016 – FY 2020 TRANSPORTATION IMPROVEMENT PROGRAM

Whereas, the Capital Region Transportation Planning Agency (CRTPA) is the organization designated by the Governor of Florida on August 17, 2004 together with the State of Florida, for carrying out provisions of 23 U.S.C. 134 (h) and (i)(2), (3) and (4); CFR 450.324, 326, 328, 330, and 332; and FS 339.175 (5) and (7); and

Whereas, the Transportation Improvement Program (TIP) shall be endorsed annually by the CRTPA and submitted to the Governor of the State of Florida, to the Federal Transit Administration, and to the Federal Highway Administration, through the State of Florida;

NOW, THEREFORE LET IT BE RESOLVED BY THE CAPITAL REGION TRANSPORTATION PLANNING AGENCY (CRTPA) THAT:

1. The Fiscal Year 2016 through Fiscal Year 2020 Transportation Improvement Program is hereby endorsed as an accurate representation of the region's transportation effort as developed through a continuing, cooperative, and comprehensive process that provided consideration to all transportation modes in accordance with the metropolitan planning provisions of U.S.C. 134;
2. The CRTPA authorizes the Chair to sign the State of Florida certification statement, which must be submitted annually with the TIP;
3. In order to expedite amendments to the TIP, the CRTPA authorizes the Executive Director to administratively approve airport project amendments which do not materially affect surface transportation traffic volumes or traffic distribution in the vicinity of the subject airport;
4. The CRTPA also authorizes the Executive Director to administratively approve project amendments to the TIP which do not meet any of the four (4) criteria which require a formal tip amendment listed in Chapter 5, Section 14 of the Florida Department of Transportation's Metropolitan Planning Organization Program Management Handbook; and
5. The CRTPA requires the Executive Director to inform the CRTPA of all TIP amendments approved under these authorizations quarterly.

Passed and duly adopted by the Capital Region Transportation Planning Agency (CRTPA) on this 29th day of June 2015.

Capital Region Transportation Planning Agency

Attest:

By: _____

Kristin Dozier, Chair

CRTPA Executive Director

Draft TIP comments

1. **Project** 4098036 (CRTPA BikePed funds) has all 2015/16, 2016/17, 2018/19, 2019/20 assigned funds taken out of it. This was never mentioned in the CRTPA Board and subcommittee meetings when changes with respect to the current TIP were presented and discussed.
2. Leon **County** with 75% of the population and with arguably the largest percentage of people walking and biking gets only 25% of the Bicycle and pedestrian project funds.
3. Project 4301471 (6th Avenue). The project work summary states: "Bike Lane/ Sidewalks". Is a bikelane on this one-way street included ?
4. Project 4080493. (Lafayette from CSX to Seminole). It seems that the county just finished this project. Why is it still in the 2015/16 workplan? Also the work summary states "Bikepath/trail" What happened to that ?

Comments from Hans van Tol

June 29, 2015



AGENDA ITEM 5 A

CONNECTIONS 2040 REGIONAL MOBILITY PLAN (RMP) FINAL BIKE/PEDESTRIAN AND ROADWAY COST FEASIBLE PLANS

REQUESTED BY: CRTPA

TYPE OF ITEM: Discussion/Approval

STATEMENT OF ISSUE

The purpose of this item is to approve the Final Connections 2040 Bike/Pedestrian and Roadway Cost Feasible Plans.

CRTPA COMMITTEE ACTIONS

The CRTPA's two (2) committees (Citizens Multimodal Advisory Committee and Technical Advisory Committee) were scheduled to meet on June 23, 2015. Due to the tight deadline associated with distribution of the CRTPA agendas, the committee recommendations for this and other agenda items will be provided under separate cover prior to the meeting.

RECOMMENDED ACTION

Option 1: Approve the Final Connections 2040 Bike/Pedestrian and Roadway Cost Feasible Plans.

PREVIOUS AGENDA ITEMS

June 17, 2013 – Agenda Item 5A -	Scope-of-Services
September 16, 2013 – Agenda Item 5D -	Consultant Selection
November 18, 2013 – Agenda Item 2B –	Contract Authorization
April 14, 2014 – Agenda Item 4E -	Project Kick-off
May 19, 2014 – Agenda Item 4A -	Mobility Plan Goals
June 16, 2014 – Agenda Item 5D -	Public Involvement plan
September 15, 2014 Agenda Item 5D -	Public Workshop Announcement
October 20, 2014 CRTPA Retreat -	Prioritization Process
November 17, 2014 Agenda Item 5D -	Existing Conditions Report
January 12, 2015 Agenda Item 6A -	Draft Project Prioritization Process
February 9, 2015 Agenda Item 2A -	Project Prioritization Process
March 9, 2015 Agenda Item 4A -	Project Ranking and Revenues
April 20, 2015 Agenda Item 4B -	Draft Cost Feasible Plan
May 18, 2015 Agenda Item 5A -	Draft Final Cost Feasible Plans

HISTORY AND ANALYSIS

Final Bike/Pedestrian Cost Feasible Plan

To demonstrate how the transportation world is never stable there are a few changes to the Final Bike/Pedestrian Cost Feasible Plan that were incorporated based on meetings with the Apalachicola National Forest (ANF) staff that occurred after the May CRTPA Board meeting and the approval of the Capital City to the Sea – Coastal Trail Project Development and Environment (PD&E) conceptual alignments.

North Trout Pond Trail

Over the last year CRTPA staff has been coordinating with the ANF staff on the development of the North Trout Pond Trail. This trail is envisioned as connecting the Trout Pond Trail to Lake Henrietta. During this time period the Supervisor of the National Forests of Florida retired and the organization has been searching for a replacement. As this position was filled, budget issues and a change in the philosophy of trail access in the Apalachicola National Forest ended the pursuit of the North Trout Pond Trail through the national forest. Based on this decision the project was removed from the Bike/Pedestrian Cost Feasible Plan. Staff will continue to work with ANF staff to link the trail to other planned trails utilizing alternative routes.

Coastal Trail

At the May CRTPA meeting, members approved the conceptual alignment of the Coastal Trail Project Development and Environment (PD&E) Study. The PD&E calls for the segmenting of the trail to create three projects. The middle segment (St. Marks Trail to US 98/US 319 intersection) is currently funded for design and construction. The outer segments, known as Coastal Trail East and Coastal Trail West still required design, right-of-way (potentially) and construction funding. With a more defined route, the Project Team felt that these two projects should move up in the Bike/Pedestrian Cost Feasible Plan to ensure that the PD&E Study won't encounter limited use by not being implemented (every PD&E Study has a "shelf life" that would require a re-evaluation if it is not acted upon).

Gadsden County

The Project Team reviewed the projects and sought to balance the trail projects in the region to make potential connections more viable. In Gadsden County the linkage between Quincy and Midway is critical to connecting the Florida Arts Trail to Midway through a shared-use path which in turn would link the recently constructed Dover Road sidewalk. Additionally, this would provide access to East Gadsden High School. This change would eliminate the Brickyard Road sidewalk.

Jefferson County

Jefferson County had no projects in Tier 2 of the Bike/Pedestrian Cost Feasible Plan and the Project Team felt that it was necessary to distribute bike/pedestrian projects throughout the region. There is an existing trail in Jefferson County known as the Monticello Bike Trail. This trail was included in the Regional Mobility Plan (2010) and would extend to Jefferson County Middle/High School and serve as a Safe Routes to School linkage. In addition the extension of the Monticello Bike Trail, the Project Team included the Martin Road Trail. The Monticello Bike Trail hard surface ends at Martin Road and serves as an alternative linkage to US 19. These two

projects may end up together in an initial PD&E study that will have to be performed as a first step in the process. As the Cost Feasible Plan moves forward these two projects will require further coordination to ensure that critical links are established before the design phase begins.

Wakulla County

The elimination of the North Trout Pond Trail opened up opportunities for including additional projects across the region. In addition to the projects added in Gadsden and Jefferson counties the Coastal Trail East and Coastal Trail West were added. Others projects in Wakulla County include the Bloxham Cutoff Trail (Springhill Road to US 98). This project would link US 98, the St. Marks Trail, Wakulla Springs State Park, Wakulla State Forest, and a potential for linking the southern terminus of the Trout Pond Trail. The Bloxham Cutoff Trail also provides a link to a potential trail along Crawfordville Road which would provide a “loop” trail (St. Marks Trail – Bloxham Cutoff Trail – Crawfordville Road Trail – Capital Circle, SE/SW Trail) that would be approximately 29 miles in total length.

Updated Bike/Pedestrian Final Cost Feasible Plan

Based on the meeting with the ANF and the changes to the recommended projects the Final Bike/Pedestrian Cost Feasible Plan is shown as **Attachment 1** and the associated map is shown as **Attachment 2**. For comparison purposes, the Bike/Pedestrian Cost Feasible Plan from the May 18, 2015 CRTPA Board meeting is shown as **Attachment 3**. Lastly, the Bike and Pedestrian Vision Plan is shown as **Attachment 4**.

Final Roadway Cost Feasible Plan

There were no changes to the Final Roadway Cost Feasible Plan from the Draft Final that was presented at the May 18, 2015 CRTPA Board meeting which is shown as **Attachment 5** and the associated map is shown as **Attachment 6**. The Roadway Vision Plan is shown as **Attachment 7**.

Draft Transit Plan

The Draft Transit Plan has not changed since the May 18, 2015 CRTPA Board meeting and is shown as **Attachment 8**.

Project Schedule

The schedule shown below reflects the current schedule for approving the Final Cost Feasible Plan, and will be augmented to reflect the need to have a Public Hearing and Plan Adoption in November.

The schedule for the remainder of the project is included below to ensure that members are aware of remaining project tasks.

February 9, 2015 –	Approval of Evaluation Criteria - COMPLETED
February 9, 2015 –	Review and additions to Opportunities Plan - COMPLETED
March 3, 2015 –	CMAC and TAC meetings - COMPLETED
March 9, 2015* –	Presentation of project rankings (applying) Evaluation Criteria and Opportunities Plan - COMPLETED
March 9, 2015* -	Review of Connection 2040 RMP Revenues - COMPLETED
April 13, 2015 -	(no later than) – Ad for Draft Cost Feasible Plan in paper - COMPLETED
April 14, 2015 –	CMAC and TAC Meetings - COMPLETED

April 20, 2015* – CRTPA Meeting - Draft Cost Feasible Plan
April 22, 2015 – Public Meeting for Draft Cost Feasible Plan
~~**May 12, 2015 – (no later than) – Ad for Draft Final Cost Feasible Plan in paper**~~
May 12, 2015 – CMAC and TAC Meetings
May 18, 2015* – CRTPA Meeting - Draft Final Cost Feasible Plan
~~**May 22, 2015 – Public Meeting for Draft Final Cost Feasible Plan**~~
~~**June 12, 2015 – (no later than) – Ad for Final Cost Feasible Plan**~~
~~**June 22, 2015 – Public Hearing – Final Cost Feasible Plan**~~
June 23, 2015 - CMAC and TAC Meetings
June 29, 2015* – Cost Feasible Plan Approval
June 29, 2015 – CRTPA Priority Projects List(s) Approval
August 10, 2015 – Submittal of Priority Project List to FDOT

*** - CRTPA Meeting**

NEXT STEPS

Cost Feasible Plan (June 2015)

After the approval of the Cost Feasible CRTPA and the associated Priority Project List, staff will be working with the Florida Department of Transportation to implement the Connections 2040 Regional Mobility Plan (RMP). There will more materials presented later this year to complete the process related to transit, air quality, project sheets and ultimately the adoption of the RMP.

RECOMMENDED ACTION

Option 1: Approve the Final Connections 2040 Bike/Pedestrian and Roadway Cost Feasible Plans.

Option 2: Provide other Direction.


ATTACHMENT

Attachment 1: Bike/Pedestrian Cost Feasible Plan
Attachment 2: Bike and Pedestrian Cost Feasible Plan Map
Attachment 3: Draft Final Bike and Pedestrian Cost Feasible Plan from May 18, 2015
Attachment 4: Bike and Pedestrian Vision Plan
Attachment 5: Roadway Cost Feasible Plan
Attachment 6: Roadway Cost Feasible Plan Map
Attachment 7: Roadway Vision Plan
Attachment 8: Draft Transit Plan

CRTPA Regional Mobility Plan 2040

Cost Feasible Plan Final

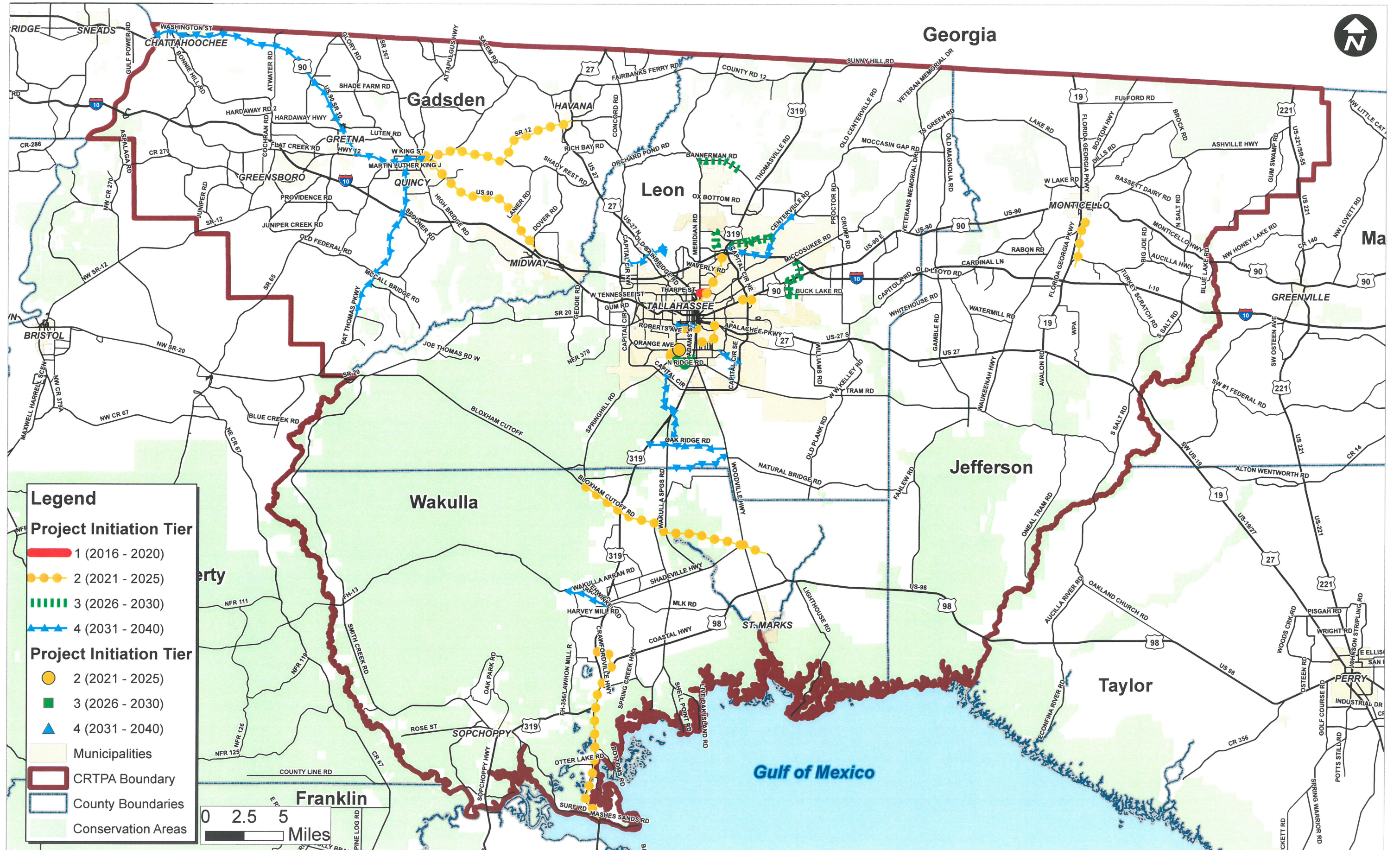
Bicycle/Pedestrian



		Tier 1	Tier 2	Tier 3	Tier 4
		2016-2020	2021-2025	2026-2030	2031-2040
Federal/State	Revenues	\$ 37,000	\$ 19,893,600	\$ 23,166,000	\$ 59,014,980
	Costs	\$ 37,000	\$ 19,893,600	\$ 23,166,000	\$ 58,539,939
	Balance	\$ -	\$ 0	\$ 0	\$ 475,042
Blueprint	Revenues	\$ -	\$ 9,957,545	\$ 12,029,918	\$ 30,383,823
	Costs	\$ -	\$ 9,523,140	\$ 11,185,460	\$ 26,986,603
	Balance	\$ -	\$ 434,405	\$ 844,458	\$ 3,397,220

ID Num	Project Name	From	To	Strategy	Government	Current Year Cost	CRTPA	BP	YOE Cost	CRTPA	BP	YOE Cost	CRTPA	BP	YOE Cost
422	Glenview Dr	Meridian Rd	Thomasville Rd	Sidewalk	Leon	\$ 37,000	x		\$ 497,340						
156	Florida Arts Trail	North Corry St	Florida Georgia Hwy	Shared Use Path	Gadsden		x		\$ 3,705,183	x		\$ 12,944,003			
543	Wakulla Environmental Institute Trail - CC2ST	Coastal Hwy	Crawfordville Hwy	Shared Use Path	Wakulla		x		\$ 349,980	x		\$ 1,222,650			
160	Quincy to Midway/US 90 Trail	Madison St	Dover Rd	Shared Use Path	Gadsden		x		\$ 1,970,326	x		\$ 3,977,545	x		\$ 6,617,688
567	Monticello Bike Trail Extension	Southern Terminus of Monticello Bike Trail	Jefferson County Middle/High School	Shared Use Path	Jefferson		x		\$ 480,148	x		\$ 1,677,390			
550	Bloxham Cutoff Rd Trail - CC2ST	Proposed Lake Henrietta South	Shadeville Rd	Shared Use Path	Wakulla		x		\$ 3,266,479	x		\$ 2,801,370	x		\$ 4,535,407
1556	Magnolia Dr	Monroe St	Lafayette St	Sidewalk	Leon		x		\$ 268,011	x		\$ 543,042			
561	Coastal Trail West - CC2ST	Northern US 98/319 Split	Ochlockonee Bay Trail	Shared Use Path	Wakulla		x		\$ 7,586,584						
542	Coastal Trail East - CC2ST	Early Bird Trail	Shadeville Rd	Shared Use Path	Wakulla		x		\$ 1,327,468						
1254	Martin Rd Trail	Bike Trail	Jefferson St	Shared Use Path	Jefferson		x		\$ 276,300						
136	St Marks Trail Connection to Orange Ave	St Marks Trail	Orange Ave	Bike Intersection	Leon		x		\$ 165,780						
447	Capital Cascades Trail*	Gamble St	Monroe St	Shared Use Path	Leon			x	\$ 978,716						
454	Goose Pond Trail*	Mahan Dr and Fort Knox Blvd Intersection	Southeast Corner of Weems Rd	Shared Use Path	Leon			x	\$ 954,156						
456	Capital Cascades Trail*	Springhill Rd	Mill St	Shared Use Path	Leon			x	\$ 2,447,404						
527	Thomasville Rd Trail*	Meridian Rd	Live Oak Plantation Rd	Shared Use Path	Leon			x	\$ 5,142,864						
462	Buck Lake Trail*	Miccosukee Rd	Proposed Goose Creek Trail	Shared Use Path	Leon						x	\$ 3,018,730			
514	Segment 5A Trail (Killearn Greenway)*	Thomasville Rd	Shamrock St	Shared Use Path	Leon						x	\$ 1,255,540			
525	Timberlane Trail*	Timberlane Rd	Maclay Gardens	Shared Use Path	Leon						x	\$ 1,174,030			
180	Bannerman Rd Trail*	Meridian Rd	Tekesta Drive	Shared Use Path	Leon						x	\$ 2,541,110			
465	Dr Charles Billings Greenway*	North Ridge Rd	Bragg Rd	Shared Use Path	Leon						x	\$ 1,860,430			
473	Segment 5A Trail (Killearn Greenway)*	Killarney Way	Centerville Rd	Shared Use Path	Leon						x	\$ 1,335,620			
161	Quincy to Chattahoochee/US 90 Trail	Gadsden/Jackson County Line	SR 65/Madison St	Shared Use Path	Gadsden								x		\$ 24,820,899
162	Pat Thomas Pkwy - Quincy to Lines Tract	Cooks Landing Rd	Jefferson St	Shared Use Path	Gadsden								x		\$ 13,054,332
444	Lake Jackson Mounds State Park Trail			Shared Use Path	Leon								x		\$ 3,178,430
549	Wakulla Springs Trail - CC2ST	Wakulla Springs Rd	Old Woodville Rd	Shared Use Path	Wakulla								x		\$ 4,845,057
1440	Gaines St	Stadium Dr	Monroe St	Shared Use Path	Leon								x		\$ 1,488,125
516	Pine Flats Trail*	Trout Pond	Proposed Oak Ridge Trail	Shared Use Path	Leon									x	\$ 7,792,163
470	Centerville Rd Trail*	400 Feet North of I-10	Bradfordville Rd	Shared Use Path	Leon									x	\$ 4,160,192
474	Southwest Sector Greenway*	Orange Avenue	Tram Rd	Shared Use Path	Leon									x	\$ 3,923,403
476	Segment 5B Trail (I-10 Greenway)*	Proposed Segment 5C Trail	Centerville Rd	Shared Use Path	Leon									x	\$ 3,566,399
1374	Lake Jackson Connection*	Monroe St	Lake Jackson	Shared Use Path	Leon									x	\$ 1,382,481
518	Oak Ridge Trail*	LL Wallace Rd Trail	Old Woodville Rd	Shared Use Path	Leon									x	\$ 6,161,965

* - Blueprint Project



Projects Phased Over Two Tiers
Early Phase
Late Phase

* Denotes Blueprint project

		Tier 2		Tier 3		Tier 4		Beyond 2040	
		2021-2025		2026-2030		2031-2040		Vision	
Federal/State	Revenues	\$	19,893,600	\$	23,260,863	\$	59,266,786		
	Costs	\$	19,798,737	\$	23,009,058	\$	59,144,303	\$	427,788,580
	Balance	\$	94,863	\$	251,806	\$	122,483		
Blueprint	Revenues	\$	9,957,545	\$	11,975,886	\$	29,679,141		
	Costs	\$	9,577,172	\$	11,836,110	\$	24,855,507		
	Balance	\$	380,373	\$	139,776	\$	4,823,634		

5/5/2015

ID Num	Project Name	From	To	Strategy	Government	FS	BP	YOE Cost	FS	BP	YOE Cost	FS	BP	YOE Cost	V	YOE Cost	Tier
447	Capital Cascades Trail*	Gamble St	Monroe St	Shared Use Path	Leon		x	\$ 978,716									Tier 2
156	Florida Arts Trail	North Corry St	Florida Georgia Hwy	Shared Use Path	Gadsden	x		\$ 3,705,183	x		\$ 12,944,003						Tier 2
422	Glenview Dr	Meridian Rd	Thomasville Rd	Sidewalk	Leon	x		\$ 497,340									Tier 2
543	Wakulla Environmental Institute Trail - CC2ST	Coastal Hwy	Crawfordville Hwy	Shared Use Path	Wakulla	x		\$ 1,399,920									Tier 2
560	North Trout Pond Trail - CC2ST	Springhill Rd	Downtown Tallahassee/St Marks Trail	Shared Use Path	Leon	x		\$ 8,643,278	x		\$ 10,065,055						Tier 2
454	Goose Pond Trail*	Mahan Dr and Fort Knox Blvd Intersection	Southeast Corner of Weems Rd	Shared Use Path	Leon	x		\$ 954,156									Tier 2
1556	Magnolia Dr	Monroe St	Lafayette St	Sidewalk	Leon	x		\$ 734,344									Tier 2
141	Woodville Hwy/Capital Circle Southwest Intersection			Bike/Ped Overpass	Leon	x		\$ 1,907,084									Tier 2
456	Capital Cascades Trail*	Springhill Rd	Mill St	Shared Use Path	Leon		x	\$ 2,447,404									Tier 2
527	Thomasville Rd Trail*	Meridian Rd	Live Oak Plantation Rd	Shared Use Path	Leon		x	\$ 5,142,864									Tier 2
514	Segment 5A Trail (Killearn Greenway)*	Thomasville Rd	Shamrock St	Shared Use Path	Leon	x		\$ 1,078,184									Tier 2
525	Timberlane Trail*	Timberlane Rd	Maclay Gardens	Shared Use Path	Leon		x	\$ 1,008,188									Tier 2
136	St Marks Trail Connection to Orange Ave	St Marks Trail	Orange Ave	Bike Intersection	Leon	x		\$ 165,780									Tier 2
1579	Brickyard Rd	Blue Star Hwy	Mine Rd	Sidewalk	Gadsden	x		\$ 713,468									Tier 2
473	Segment 5A Trail (Killearn Greenway)*	Killarney Way	Centerville Rd	Shared Use Path	Leon					x	\$ 1,335,620						Tier 3
462	Buck Lake Trail*	Miccosukee Rd	Proposed Goose Creek Trail	Shared Use Path	Leon					x	\$ 3,018,730						Tier 3
180	Bannerman Rd Trail*	Meridian Rd	Tekesta Drive	Shared Use Path	Leon					x	\$ 2,541,110						Tier 3
465	Dr Charles Billings Greenway*	North Ridge Rd	Bragg Rd	Shared Use Path	Leon					x	\$ 1,860,430						Tier 3
474	Southwest Sector Greenway*	Orange Avenue	Tram Rd	Shared Use Path	Leon					x	\$ 3,080,220						Tier 3
162	Pat Thomas Pkwy - Quincy to Lines Tract	Cooks Landing Rd	Jefferson St	Shared Use Path	Gadsden							x		\$ 13,054,332			Tier 4
444	Lake Jackson Mounds State Park Trail			Shared Use Path	Leon							x		\$ 3,178,430			Tier 4
534	Mysterious Waters Trail - Lake Henrietta South - CC2ST	City of Sopchoppy	Bloxham Cutoff Rd	Shared Use Path	Wakulla							x		\$ 35,567,454			Tier 4
557	Shadeville Hwy Trail - CC2ST	Proposed Lake Henrietta South Trail	Crawfordville Hwy	Shared Use Path	Wakulla							x		\$ 3,183,895			Tier 4
470	Centerville Rd Trail*	400 Feet North of I-10	Bradfordville Rd	Shared Use Path	Leon							x		\$ 4,160,192			Tier 4
516	Pine Flats Trail*	Trout Pond	Proposed Oak Ridge Trail	Shared Use Path	Leon								x	\$ 7,792,163			Tier 4
476	Segment 5B Trail (I-10 Greenway)*	Proposed Segment 5C Trail	Centerville Rd	Shared Use Path	Leon								x	\$ 3,566,399			Tier 4
1374	Lake Jackson Connection*	Monroe St	Lake Jackson	Shared Use Path	Leon								x	\$ 1,382,481			Tier 4
518	Oak Ridge Trail*	LL Wallace Rd Trail	Old Woodville Rd	Shared Use Path	Leon								x	\$ 6,161,965			Tier 4
466	Trout Pond Trail*	Springhill Rd	Rivers Rd	Shared Use Path	Leon								x	\$ 5,952,499			Tier 4

CRTPA Regional Mobility Plan 2040

Vision Plan

Bicycle/Pedestrian



		Tier 1	Tier 2	Tier 3	Tier 4	Beyond 2040
		2016-2020	2021-2025	2026-2030	2031-2040	Vision
Federal/State	Revenues	\$ 37,000	\$ 19,893,600	\$ 23,166,000	\$ 59,014,980	
	Costs	\$ 37,000	\$ 19,893,600	\$ 23,166,000	\$ 58,539,939	\$ 400,219,139
	Balance	\$ -	\$ 0	\$ 0	\$ 475,042	
Blueprint	Revenues	\$ -	\$ 9,957,545	\$ 12,029,918	\$ 30,383,823	
	Costs	\$ -	\$ 9,523,140	\$ 11,185,460	\$ 26,986,603	
	Balance	\$ -	\$ 434,405	\$ 844,458	\$ 3,397,220	


6/12/2015

ID Num	Project Name	From	To	Strategy	Government	Current Year Cost	CRTPA	BP	YOE Cost	CRTPA	BP	YOE Cost	CRTPA	BP	YOE Cost	V	YOE Cost	Tier
537	Shadeville Hwy Trail - CC2ST	Crawfordville Hwy	Bloxham Cutoff Rd	Shared Use Path	Wakulla											x	\$ 12,908,995	Beyond 2040
557	Shadeville Hwy Trail - CC2ST	Proposed Lake Henrietta South Trail	Crawfordville Hwy	Shared Use Path	Wakulla											x	\$ 3,706,459	Beyond 2040
141	Woodville Hwy/Capital Circle Southwest Intersection			Bike/Ped Overpass	Leon											x	\$ 3,292,981	Beyond 2040
534	Mysterious Waters Trail - Lake Henrietta South - CC2ST	City of Sopchoppy	Bloxham Cutoff Rd	Shared Use Path	Wakulla											x	\$ 41,405,051	Beyond 2040
1313	Mahan Trail	Magnolia Dr	Leon/Jefferson County Line	Shared Use Path	Leon											x	\$ 19,923,278	Beyond 2040
1319	Monroe St	Fred George Rd	Tennessee St	Sidewalk	Leon											x	\$ 3,263,296	Beyond 2040
546	Spring Creek Trail - CC2ST	Shadeville Rd	Wakulla Springs Rd	Shared Use Path	Wakulla											x	\$ 7,646,162	Beyond 2040
1429	Crawfordville Rd Trail	Coastal Hwy	Crawfordville	Shared Use Path	Wakulla											x	\$ 11,036,682	Beyond 2040
1433	St Augustine Trail	Apalachee Pkwy	Capital Cir Southeast	Shared Use Path	Leon											x	\$ 4,365,904	Beyond 2040
1454	Jefferson St Trail	Monticello	Capps Hwy	Shared Use Path	Jefferson											x	\$ 13,313,992	Beyond 2040
1539	Old Bainbridge Trail	Brevard St	Capital Circle Northwest	Shared Use Path	Leon											x	\$ 10,682,575	Beyond 2040
528	FAMU Trail	1,000 feet north of Gaither Golf Course	Meridian St	Shared Use Path	Leon											x	\$ 1,605,143	Beyond 2040
563	Sopchoppy Trail - CC2ST	Surf Rd	Railroad Ave	Shared Use Path	Wakulla											x	\$ 1,204,387	Beyond 2040
1010	I-10 Trail	Fred Smith Rd	Henderson Rd	Shared Use Path	Leon											x	\$ 1,810,822	Beyond 2040
1279	Blair Stone Rd Trail	Park Ave	Capital Circle Southeast	Shared Use Path	Leon											x	\$ 4,756,057	Beyond 2040
1479	Tom Brown/Southwood Connector	Southwood Trails	Tom Brown Park	Shared Use Path	Leon											x	\$ 3,407,483	Beyond 2040
547	Wakulla Springs Trail - CC2ST	Shadeville Rd	Leon/Wakulla County Line	Shared Use Path	Wakulla											x	\$ 10,300,903	Beyond 2040
566	Wakulla Springs Trail - CC2ST	Leon/Wakulla County Line	Proposed LL Wallace Rd Trail	Shared Use Path	Leon											x	\$ 6,094,030	Beyond 2040
999	Meridian Rd Trail	Bradford Rd	Bannerman Rd	Shared Use Path	Leon											x	\$ 11,467,123	Beyond 2040
1557	Spooner Rd	Pat Thomas Pkwy	Old Federal Rd	Sidewalk	Gadsden											x	\$ 1,477,919	Beyond 2040
1325	Ocala Rd Trail	Pensacola St	Tharpe St	Shared Use Path	Leon											x	\$ 2,192,494	Beyond 2040
159	Greensboro to Gretna/SR 12/Greensboro Rd Trail	Blue Star Hwy	Blue Star Hwy	Shared Use Path	Gadsden											x	\$ 9,452,743	Beyond 2040
163	Park St/Morgan Ave/McDonald Ave/Maple St	Western Terminus of Park St	Blue Star Hwy	Shared Use Path	Gadsden											x	\$ 2,716,232	Beyond 2040
536	Sopchoppy Trail (on Sopchoppy Hwy/US 319) - CC2ST	Lawhon Mill Rd	Surf Rd	Shared Use Path	Wakulla											x	\$ 5,460,030	Beyond 2040
559	Wakulla Springs - CC2ST	Inside Wakulla Springs State Park	Inside Wakulla Springs State Park	Shared Use Path	Wakulla											x	\$ 6,060,103	Beyond 2040
102	Progress Energy Rail Trail IV	One mile southeast of Old Drifton Rd	0.65 miles north of South Salt Rd	Shared Use Path	Jefferson											x	\$ 10,294,542	Beyond 2040
538	Martin Luther King Jr Trail - CC2ST	Coastal Hwy	Crawfordville Hwy	Shared Use Path	Wakulla											x	\$ 10,884,013	Beyond 2040
1453	Washington St Trail	Monticello	Madison County Line	Shared Use Path	Jefferson											x	\$ 12,726,641	Beyond 2040
1575	Blue Star Hwy	Ochlocknee River	Dover Rd	Sidewalk	Gadsden											x	\$ 2,340,922	Beyond 2040
553	Coastal Trail East - CC2ST	Woodville Hwy	Lighthouse Rd	Shared Use Path	Wakulla											x	\$ 3,473,215	Beyond 2040
320	Rails-to-Trails (Chattahoochee)	Florida/Georgia Line	Railroad south of Lincoln Drive	Shared Use Path	Gadsden											x	\$ 2,237,022	Beyond 2040
512	Bradfordville Rd Trail	Velda Dairy Rd	Centerville Rd	Shared Use Path	Leon											x	\$ 4,717,890	Beyond 2040
1332	Ox Bottom Rd Trail	Meridian Rd	Thomasville Rd	Shared Use Path	Leon											x	\$ 4,556,740	Beyond 2040
545	Spring Creek Trail - CC2ST	Coastal Hwy	Shadeville Rd	Shared Use Path	Wakulla											x	\$ 5,500,318	Beyond 2040
1001	Centerville Rd	Fleischmann Rd	Shamrock St	Shared Use Path	Leon											x	\$ 4,037,242	Beyond 2040
1579	Brickyard Rd	Blue Star Hwy	Mine Rd	Sidewalk	Gadsden											x	\$ 1,231,952	Beyond 2040
1587	Commerce Blvd	Blue Star Hwy	Dead End	Sidewalk	Gadsden											x	\$ 1,170,461	Beyond 2040
1650	Rustling Pines Blvd	Palmer Rd	Dead End	Sidewalk	Gadsden											x	\$ 1,170,461	Beyond 2040
564	Mysterious Waters Trail - Lake Henrietta South - CC2ST	Bloxham Cutoff Rd	Helen Guard Station Rd	Shared Use Path	Wakulla											x	\$ 1,840,507	Beyond 2040
385	Bradfordville Rd Trail	Centerville Rd	Crump Rd Trailhead of Miccosukee Greenway	Shared Use Path	Leon											x	\$ 5,400,659	Beyond 2040
469	Centerville Rd North Trail	Deer Pond Lane	Proctor Rd	Shared Use Path	Leon											x	\$ 1,931,684	Beyond 2040
477	NW Connector - Fred George Trail	Lake Talquin State Recreation Area	Capital Circle Northwest and Fred George Inters	Shared Use Path	Leon											x	\$ 2,695,028	Beyond 2040
535	Franklin County Connector Trail - CC2ST	City of Sopchoppy	N T Smith Rd	Shared Use Path	Wakulla											x	\$ 6,253,060	Beyond 2040
1530	Commerce Blvd Sidewalk Woodville - Old Plank	Woodville Hwy	Old Plank Rd	Sidewalk	Wakulla											x	\$ 2,983,403	Beyond 2040
558	Sopchoppy Trail - CC2ST	Lawhon Mill Rd	Coastal Hwy	Shared Use Path	Wakulla											x	\$ 2,444,821	Beyond 2040
1322	Easement Trail	Blountstown Hwy	Brickyard Rd	Shared Use Path	Leon											x	\$ 5,150,452	Beyond 2040
1593	Dupont Rd	Blue Star Hwy	Dover Rd	Sidewalk	Gadsden											x	\$ 1,908,360	Beyond 2040
100	Progress Energy Rail Trail II	Washington St	Jefferson St	Shared Use Path	Jefferson											x	\$ 5,301,000	Beyond 2040
555	Otter Lake Trail - CC2ST	Coastal Hwy	Western Terminus of Otter Lake Rd	Shared Use Path	Wakulla											x	\$ 2,266,708	Beyond 2040
1323	Easement Trail	Mahan Drive	River	Shared Use Path	Leon											x	\$ 6,831,929	Beyond 2040
103	Progress Energy Rail Trail V	0.65 miles north of South Salt Rd	East Jefferson County Line	Shared Use Path	Jefferson											x	\$ 2,131,002	Beyond 2040
466	Trout Pond Trail*	Springhill Rd	Rivers Rd	Shared Use Path	Leon											x	\$ 6,929,467	Beyond 2040
554	Shell Point Trail - CC2ST	Live Oak Island Rd	Southern Terminus of Shell Point Rd	Shared Use Path	Wakulla											x	\$ 4,281,088	Beyond 2040
1307	Lakeshore Dr Trail	Monroe St	Meridian Rd	Shared Use Path	Leon											x	\$ 5,443,067	Beyond 2040

CRTPA Regional Mobility Plan 2040

Vision Plan

Bicycle/Pedestrian



		Tier 1	Tier 2	Tier 3	Tier 4	Beyond 2040
		2016-2020	2021-2025	2026-2030	2031-2040	Vision
Federal/State	Revenues	\$ 37,000	\$ 19,893,600	\$ 23,166,000	\$ 59,014,980	
	Costs	\$ 37,000	\$ 19,893,600	\$ 23,166,000	\$ 58,539,939	\$ 400,219,139
	Balance	\$ -	\$ 0	\$ 0	\$ 475,042	
Blueprint	Revenues	\$ -	\$ 9,957,545	\$ 12,029,918	\$ 30,383,823	
	Costs	\$ -	\$ 9,523,140	\$ 11,185,460	\$ 26,986,603	
	Balance	\$ -	\$ 434,405	\$ 844,458	\$ 3,397,220	

6/12/2015

ID Num	Project Name	From	To	Strategy	Government	Current Year Cost	CRTPA	BP	YOE Cost	CRTPA	BP	YOE Cost	CRTPA	BP	YOE Cost	V	YOE Cost	Tier
99	Progress Energy Rail Trail I	Florida/Georgia Line	Washington St	Shared Use Path	Jefferson											x	\$ 15,288,084	Beyond 2040
101	Progress Energy Rail Trail III	Jefferson St	One mile southeast of Old Drifton Rd	Shared Use Path	Jefferson											x	\$ 1,263,758	Beyond 2040
302	CR 269/Main St Trail	Blue Star Hwy	Rail Yard	Shared Use Path	Gadsden											x	\$ 1,971,972	Beyond 2040
1573	McCall Bridge Rd	Pat Thomas Parkway	Dean End	Shared Use Path	Gadsden											x	\$ 4,136,900	Beyond 2040
304	Railroad Trail	Rail yard	Apalachicola River	Shared Use Path	Gadsden											x	\$ 2,215,818	Beyond 2040
378	Orchard Pond Trail (Phipps)	Old Bainbridge Rd	Meridian Rd	Shared Use Path	Leon											x	\$ 6,333,635	Beyond 2040
541	Coastal Trail East (alternative route) - CC2ST	Coastal Hwy	Early Bird Trail	Shared Use Path	Wakulla											x	\$ 2,962,199	Beyond 2040
1558	Post Plant Rd	Havana Hwy	Point Milligan Rd	Sidewalk	Gadsden											x	\$ 1,170,461	Beyond 2040
450	Meridian Greenway (Meridian Rd)	Bannerman Rd	Florida/Georgia Line	Shared Use Path	Leon											x	\$ 11,019,719	Beyond 2040
511	Chaires - Capitola Trail	Northeast corner of Chaires Cross Rd	Baum Rd	Shared Use Path	Leon											x	\$ 2,979,162	Beyond 2040
1559	St Hebron Rd	Point Milligan Rd	Fantana Trail	Sidewalk	Gadsden											x	\$ 1,170,461	Beyond 2040
552	Shell Point Trail - CC2ST	Coastal Hwy	Shell Point Rd and Live Oak Island Rd Split	Shared Use Path	Wakulla											x	\$ 3,948,185	Beyond 2040
556	Wakulla Beach Rd Trail - CC2ST	Coastal Hwy	Southern Terminus of Wakulla Beach Rd	Shared Use Path	Wakulla											x	\$ 5,097,442	Beyond 2040
328	McCall Bridge Rd	Pat Thomas Pkwy	Lakeview Point Rd	Shared Use Path	Gadsden											x	\$ 1,986,815	Beyond 2040
1353	Florida Georgia Hwy	Sidewalk	Schwall Rd	Sidewalk	Gadsden											x	\$ 1,702,681	Beyond 2040
544	Shell Point Trail (Live Oak Island Rd) - CC2ST	Shell Point Rd	Southern terminus of Live Oak Island Rd	Shared Use Path	Wakulla											x	\$ 4,999,903	Beyond 2040
157	Cooks Landing Rd	Pat Thomas Pkwy	Southern Terminus	Shared Use Path	Gadsden											x	\$ 4,287,449	Beyond 2040
158	Lakeview Point Rd Trail	McCall Bridge Rd	Southern Terminus	Shared Use Path	Gadsden											x	\$ 4,380,746	Beyond 2040
1430	US 98 Trail	Wakulla County	Taylor County	Shared Use Path	Jefferson											x	\$ 10,205,485	Beyond 2040
1470	Capps Hwy Trail	Waukeenah Hwy	Salt Rd	Shared Use Path	Jefferson											x	\$ 12,283,477	Beyond 2040

CRTPA Regional Mobility Plan 2040

Cost Feasible Plan Final

Roadways

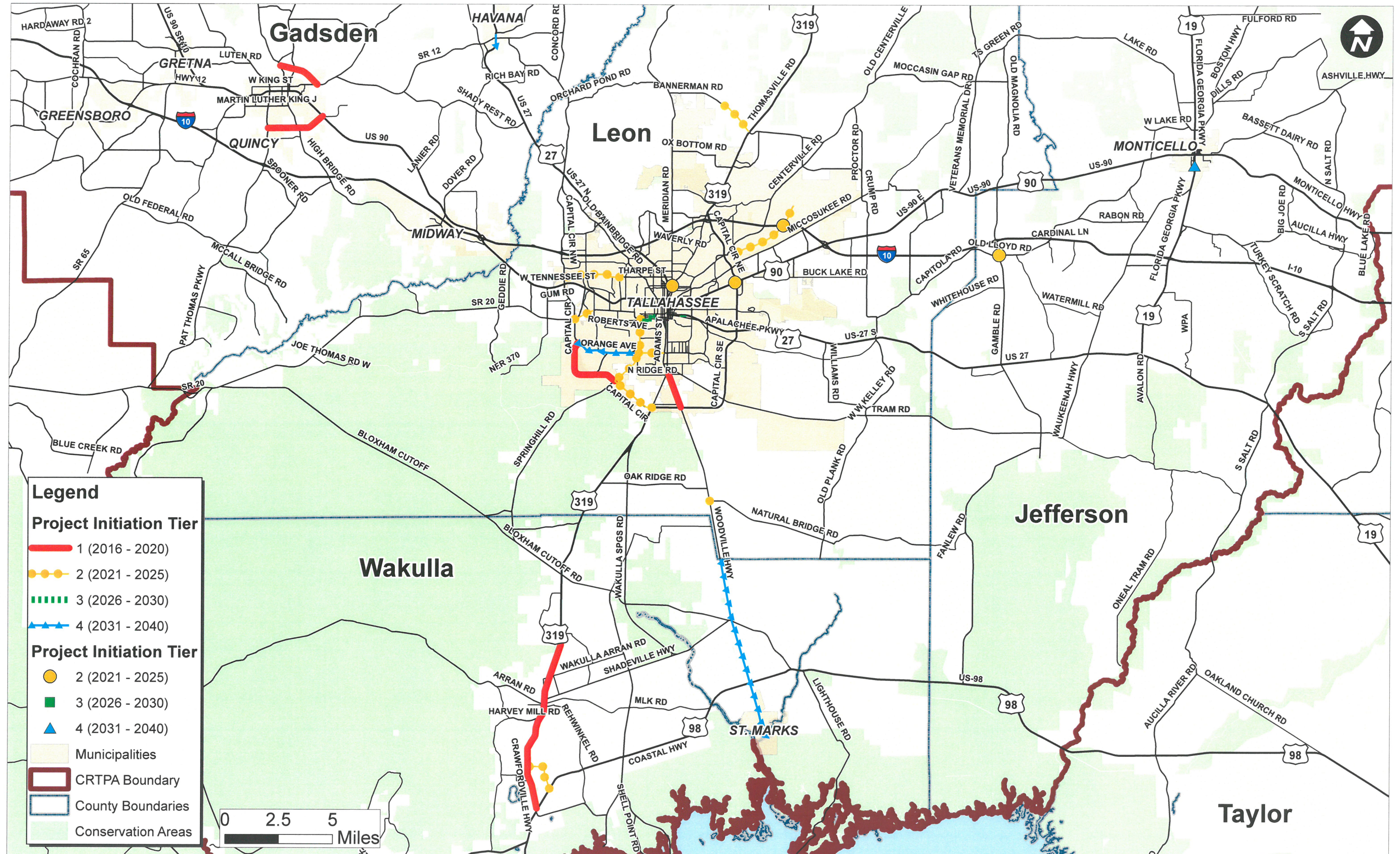


		Tier 1	Tier 2	Tier 3	Tier 4
		2016-2020	2021-2025	2026-2030	2031-2040
Other Arterials	Revenues	\$ 12,343,000	\$ 74,109,800	\$ 82,025,244	\$ 227,718,036
	Costs	\$ 12,343,000	\$ 73,651,756	\$ 81,751,670	\$ 227,278,710
	Balance	\$ -	\$ 458,044	\$ 273,574	\$ 439,326
SIS	Revenues	\$ -	\$ 75,522,000	\$ 254,295,010	\$ 134,528,935
	Costs	\$ -	\$ 34,282,690	\$ 119,766,075	\$ -
	Balance	\$ -	\$ 41,239,310	\$ 134,528,935	\$ 134,528,935
Blueprint	Revenues	\$ -	\$ 143,235,455	\$ 237,857,050	\$ 429,651,932
	Costs	\$ -	\$ 72,175,393	\$ 233,117,528	\$ 24,234,392
	Balance	\$ -	\$ 71,060,062	\$ 4,739,522	\$ 405,417,539

ID Num	Project Name	From	To	Strategy	Government	Current Year Cost	CRTPA		BP	YOE Cost	CRTPA		BP	YOE Cost	CRTPA		BP	YOE Cost
							OA	SIS			OA	SIS			OA	SIS		
1026	Woodville Hwy*	Capital Circle Southeast	Paul Russell Rd	Widen from 2 Lanes to 4 Lanes	Leon	\$ 1,200,000	x			\$ 9,117,900	x			\$ 31,853,250				
1540	Crawfordville Rd	US 98	Lost Creek Bridge	Widen from 2 Lanes to 4 Lanes	Wakulla	\$ 2,828,000	x			\$ 14,794,944								
308	Crawfordville Rd	Lost Creek Bridge	East Ivan Rd	Widen from 2 Lanes to 4 Lanes	Wakulla	\$ 3,798,000	x			\$ 17,602,152								
1513	Capital Circle Southwest*	Crawfordville Rd	Springhill Rd	Widen from 2 Lanes to 6 Lanes	Leon		x			\$ 16,516,600					x			\$ 73,495,508
1554	Orange Ave*	Springhill Rd	Adams St	Widen from 2 Lanes to 4 Lanes	Leon		x			\$ 6,535,416	x			\$ 22,831,380				
3	Wakulla Environmental Institute Connection	Coastal Hwy	Crawfordville Rd	New 2 Lane Road	Wakulla		x			\$ 8,039,716								
1527	Woodville Hwy/Natural Bridge Rd Roundabout			Roundabout	Leon		x			\$ 828,900								
4	Old Lloyd Rd/Gamble Rd Intersection			Roundabout	Jefferson		x			\$ 216,128								
382	Capital Circle Southwest*	Springhill Rd	Orange Ave	Widen from 2 Lanes to 6 Lanes	Leon	\$ 3,142,000		x		\$ 13,560,190		x		\$ 47,372,325				
138	Mahan Dr and Capital Circle Northeast Flyover			Intersection Improvements	Leon			x		\$ 10,361,250		x		\$ 36,196,875				
137	Welaunee Blvd/I-10 Interchange			New Interchange	Leon			x		\$ 10,361,250		x		\$ 36,196,875				
383	Lake Bradford Rd/Springhill Rd*	Capital Circle Southwest	Gaines St	Widen to 4 Lanes	Leon				x	\$ 18,147,691			x	\$ 63,398,693				
181	Tharpe St*	Capital Circle Northwest	Ocala Rd	Widen from 2 Lanes to 4 Lanes	Leon				x	\$ 11,436,978			x	\$ 39,954,915				
75	Thomasville Rd, Meridian Rd, and 7th Ave Intersection*			Intersection Improvements	Leon				x	\$ 4,973,400			x	\$ 17,374,500				
179	Bannerman Rd*	Tekesta Drive	Thomasville Rd	Widen from 2 Lanes to 4 Lanes	Leon				x	\$ 9,237,937			x	\$ 32,272,598				
369	Welaunee Blvd Extension*	Fleischmann Rd	South of I-10	New 4 Lane Road	Leon				x	\$ 16,380,906			x	\$ 57,226,455				
1571	Welaunee Blvd Extension*	South of I-10	Shamrock St	New 4 Lane Road	Leon				x	\$ 6,552,301			x	\$ 22,890,368				
1365	West Side Student Corridor Gateway (Pensacola St)*	Capital Circle Northwest	Appleyard Dr	Widen from 2 Lanes to 4 Lanes	Leon				x	\$ 5,446,180							x	\$ 24,234,392
397	Lake Bradford Rd to Madison St Connection	Lake Bradford Rd	Madison St near Railroad Ave	New 2 Lane Road	Leon						x			\$ 24,964,940				
407	DeSoto Park Dr Extension	Lafayette St	Apalachee Pkwy Frontage Rd	New 2 Lane Road	Leon						x			\$ 2,102,100				
1142	Orange Ave	Capital Circle Southwest	Springhill Rd	Widen from 2 Lanes to 4 Lanes	Leon										x			\$ 96,276,383
315	Woodville Hwy	Riverside Dr	Bloxham Cutoff Rd	Widen from 2 Lanes to 4 Lanes	Wakulla										x			\$ 52,375,795
333	Main St - Downtown Havana	12th Ave East	160 feet north of 6th Ave East	Narrow Road	Gadsden										x			\$ 3,531,792
6	Jefferson St and Seminole Ave Roundabout			Roundabout	Jefferson										x			\$ 1,599,233
327	Quincy Bypass (South)	Pat Thomas Pkwy	Jefferson St	New 2 Lane Bypass Road Around Downto	Gadsden	\$ 825,000												
1516	Quincy Bypass (North)	Bainbridge Hwy	Havana Hwy	New 2 Lane Bypass Road Around Downto	Gadsden	\$ 550,000												

* - Blueprint Projects

CRTPA Cost Feasible Plan - Roadway Projects



CRTPA Regional Mobility Plan 2040

Vision Plan

Roadways



		Tier 1	Tier 2	Tier 3	Tier 4	Beyond 2040
		2016-2020	2021-2025	2026-2030	2031-2040	Vision
Other Arterials	Revenues	\$ 12,343,000	\$ 74,109,800	\$ 82,025,244	\$ 227,718,036	
	Costs	\$ 12,343,000	\$ 73,651,756	\$ 81,751,670	\$ 227,278,710	\$ 5,433,035,188
	Balance	\$ -	\$ 458,044	\$ 273,574	\$ 439,326	
SIS	Revenues	\$ -	\$ 75,522,000	\$ 254,295,010	\$ 134,528,935	
	Costs	\$ -	\$ 34,282,690	\$ 119,766,075	\$ -	
	Balance	\$ -	\$ 41,239,310	\$ 134,528,935	\$ 134,528,935	
Blueprint	Revenues	\$ -	\$ 143,235,455	\$ 237,857,050	\$ 429,651,932	
	Costs	\$ -	\$ 72,175,393	\$ 233,117,528	\$ 24,234,392	
	Balance	\$ -	\$ 71,060,062	\$ 4,739,522	\$ 405,417,539	

6/12/2015

ID Num	Project Name	From	To	Strategy	Government	Current Year Cost	CRTPA				CRTPA				CRTPA				V	YOE Cost	Tier
							OA	SIS	BP	YOE Cost	OA	SIS	BP	YOE Cost	OA	SIS	BP	YOE Cost			
1518	Woodville Hwy	Leon/Wakulla County Line	Capital Circle Southeast	Widen from 2 Lanes to 4 Lanes	Leon														x	\$ 273,870,864	Beyond 2040
591	Crawfordville Rd	Leon/Wakulla County Line	LL Wallace Rd	Widen from 2 Lanes to 4 Lanes	Leon														x	\$ 76,722,433	Beyond 2040
371	Woodville Hwy Corridor (Powerline Easement Road)	Leon/Wakulla County Line	Capital Circle Southeast	New 2 Lane Road	Leon														x	\$ 270,834,451	Beyond 2040
1551	Woodville Hwy Corridor (Powerline Easement Road)	Bloxxham Cutoff Rd	Leon/Wakulla County Line	New 2 Lane Road	Wakulla														x	\$ 120,370,867	Beyond 2040
592	Crawfordville Rd	LL Wallace Rd	Wakulla Springs Rd	Widen Roadway from 2 Lanes to 4 Lanes	Leon														x	\$ 81,287,654	Beyond 2040
1362	I-10 Parallel Route	Capital Circle Northwest	Capital Circle Northeast	New 2 Lane Road	Leon														x	\$ 286,061,044	Beyond 2040
396	Airport Dr to Mosley St Connection	Eastern Terminus of Airport Rd	New Jackson Bluff Rd/Mosley Street	New 2 Lane Road	Leon														x	\$ 7,035,487	Beyond 2040
132	Magnolia Dr/Apalachee Pkwy Intersection Improvements			Intersection Improvements	Leon														x	\$ 8,587,620	Beyond 2040
374	Blair Stone Rd	Tram Rd	Existing Blair Stone Rd	New 2 Lane Road	Leon														x	\$ 107,737,524	Beyond 2040
1350	Tram Rd with Trail/sidewalk	Monroe St	Capital Circle Southeast	Widen from 2 Lanes to 4 Lanes	Leon														x	\$ 112,926,143	Beyond 2040
1536	Thomasville Rd and I-10 Interchange			Interchange Improvements	Leon														x	\$ 858,762,000	Beyond 2040
395	Jackson Bluff Rd/Mosley St Connection	Jackson Bluff Rd/Lake Bradford In	Western Terminus of Mosley St	New 2 Lane Road	Leon														x	\$ 9,077,432	Beyond 2040
1222	Dempsey Mayo Rd South Extension	Buck Lake Rd	Mahan Dr	New 2 Lane Road	Leon														x	\$ 8,127,493	Beyond 2040
1282	Blountstown Hwy	Silver Lake Rd	Capital Circle Northwest	Widen from 2 Lanes to 4 Lanes	Leon														x	\$ 139,102,481	Beyond 2040
1259	Tharpe St	Ocala Rd	Monroe St	Median Improvements	Leon														x	\$ 10,018,890	Beyond 2040
1221	Meridian St	Gaines St	Lafayette St	Widen from 2 Lanes to 4 Lanes	Leon														x	\$ 8,019,353	Beyond 2040
184	Fred George Rd	Old Bainbridge Rd	Monroe St	Realignment and Intersection Improvements	Leon														x	\$ 16,231,662	Beyond 2040
1517	Miles Johnson Rd to Mahan Dr Connection	Mahan Dr	Miccosukee Rd	New 2 Lane Road	Leon														x	\$ 47,789,575	Beyond 2040
392	Roberts Ave Realignment	Capital Circle Southwest	Eisenhower St	New Alignment	Leon														x	\$ 39,267,688	Beyond 2040
372	Miles Johnson Rd/Shamrock St Connection	Centerville Rd	Miccosukee Rd	New 2 Lane Road	Leon														x	\$ 112,283,662	Beyond 2040
388	Tennessee St to Tharpe St Connection (Extend Basin Rd)	Tennessee St	Tharpe St	New 2 Lane Road	Leon														x	\$ 37,974,244	Beyond 2040
389	Betton Rd Connection to Miccosukee Rd	Betton Rd/Centerville Rd Intersec	Miccosukee Rd	New 2 Lane Road	Leon														x	\$ 19,711,238	Beyond 2040
1327	Old Bainbridge Rd Reconstruction	Brevard St	I-10	Roadway and Multimodal Improvements	Leon														x	\$ 107,152,294	Beyond 2040
687	I-10 Parallel Route	Jefferson Rd	Old Lloyd Rd	New 2 Lane Road	Jefferson														x	\$ 18,759,179	Beyond 2040
1234	Attapulugus Hwy	Quincy	FL/GA Line	Widen from 2 Lanes to 4 Lanes	Gadsden														x	\$ 93,634,744	Beyond 2040
1321	Pottsdamer St North/South Connector	Orange Ave	Jackson Bluff Rd	New 2 Lane Road	Leon														x	\$ 58,609,976	Beyond 2040
688	Jefferson County Access Road	Cardinal Ln	Waukeenah Hwy	New 2 Lane Road	Jefferson														x	\$ 17,828,323	Beyond 2040
370	Thornton Rd Extension	Miccosukee Rd	Thornton Rd	New 2 Lane Road	Leon														x	\$ 68,081,803	Beyond 2040
1017	Lawhon Mill Rd	Harvey Mill Rd	Crawfordville Rd	Roadway Improvements	Wakulla														x	\$ 48,459,622	Beyond 2040
1519	Dempsey Mayo Rd North Extension	Miccosukee Rd	Centerville Rd	New 2 Lane Road	Leon														x	\$ 37,227,863	Beyond 2040
1538	J Lewis Hall Rd Extension	Woodville Hwy	New Road in Easement	New 2 Lane Road	Leon														x	\$ 15,169,342	Beyond 2040
384	Easterwood Dr	Capital Circle Northeast	Conner Blvd	Road Realignment	Leon														x	\$ 40,228,229	Beyond 2040
387	City of Midway Access Road	Dover Rd	Commerce Blvd	New 2 Lane Road	Gadsden														x	\$ 17,209,166	Beyond 2040
45	Salem Rd	Havana Hwy	FL/GA Line	Widen from 2 Lanes to 4 Lanes	Gadsden														x	\$ 57,626,111	Beyond 2040
164	Wahkeenah Hwy and Jefferson St Intersection Improvements			Intersection Improvements	Jefferson														x	\$ 5,725,080	Beyond 2040
171	West Lake Rd at US 19	0.4 miles west of Lake Rd	Lake Rd	Realignment and Intersection Improvements	Jefferson														x	\$ 3,547,429	Beyond 2040
393	Roberts Ave to Stuckey Ave Connection	Roberts Ave	Stuckey Ave	New 2 Lane Road	Leon														x	\$ 8,884,476	Beyond 2040
1542	Welaunee Blvd Extension	Shamrock St	Roberts Rd	New 4 Lane Road	Leon														x	\$ 95,038,448	Beyond 2040
15	Old Bainbridge Rd/Capital Circle Northwest			Intersection Improvements	Leon														x	\$ 1,145,016	Beyond 2040
169	CR 257	J C Lee Rd	660 feet west of US 19	Road Realignment	Jefferson														x	\$ 2,077,992	Beyond 2040
400	Weems Rd Extension	Mahan Dr and Weems Rd Intersec	Eastern Terminus of Automotive Way	New 2 Lane Road	Leon														x	\$ 12,508,240	Beyond 2040
1013	MLK Jr Blvd	S Atlanta St	Pat Thomas Parkway	Widen from 2 Lanes to 4 Lanes	Gadsden														x	\$ 14,495,054	Beyond 2040
1012	Waukeenah St	Jefferson St	Washington St	Widen to 2 Lanes	Jefferson														x	\$ 11,840,314	Beyond 2040
2000	Mike Stewart Dr	Crawfordville Rd	East Ivan Rd	Roadway Extension	Wakulla														x	\$ 8,182,624	Beyond 2040
316	Lonnie Raker Ln	East Ivan Rd	Bloxxham Cutoff Rd	Roadway and Multimodal Improvements	Wakulla														x	\$ 17,351,233	Beyond 2040
404	Jim Lee Rd Extension	Tram Rd	Jim Lee Rd	New 2 Lane Road	Leon														x	\$ 26,678,873	Beyond 2040
335	Main St Bypass - Havana	Havana Hwy	Florida Georgia Hwy	New 2 Lane Road	Gadsden														x	\$ 11,475,605	Beyond 2040
402	Lonesome Dove Ln to Salinger Way Connection	Tram Rd	Williams Rd	New 2 Lane Road	Leon														x	\$ 151,470,774	Beyond 2040
373	Orange Ave Extension	Mossy Creek Lane	WW Kelley Rd	New 2 Lane Road	Leon														x	\$ 244,575,418	Beyond 2040
1137	Weems Rd Improvements	CSX Railroad	Easterwood Dr	Roadway Improvement	Leon														x	\$ 8,765,734	Beyond 2040
1141	School House Rd Extension	School House Rd	Biltmore Rd	New 2 Lane Road	Leon														x	\$ 19,302,001	Beyond 2040
1528	Woodville Hwy/Commerce Blvd Roundabout			Roundabout	Wakulla														x	\$ 1,717,524	Beyond 2040
1537	Woodville Hwy/J Lewis Hall Rd Roundabout			Roundabout	Leon														x	\$ 1,717,524	Beyond 2040
14	CJ Spears Rd/Royal Oaks Ct	Decey Wallace Lane	Royal Oaks Court	New 2 Lane Road	Wakulla														x	\$ 1,431,270	Beyond 2040
41	Hardaway Hwy	Atwater Rd	Blue Star Hwy	Roadway and Multimodal Improvements	Gadsden														x	\$ 42,191,719	Beyond 2040

CRTPA Regional Mobility Plan 2040
Vision Plan
Roadways



		Tier 1	Tier 2	Tier 3	Tier 4	Beyond 2040
		2016-2020	2021-2025	2026-2030	2031-2040	Vision
Other Arterials	Revenues	\$ 12,343,000	\$ 74,109,800	\$ 82,025,244	\$ 227,718,036	
	Costs	\$ 12,343,000	\$ 73,651,756	\$ 81,751,670	\$ 227,278,710	\$ 5,433,035,188
	Balance	\$ -	\$ 458,044	\$ 273,574	\$ 439,326	
SIS	Revenues	\$ -	\$ 75,522,000	\$ 254,295,010	\$ 134,528,935	
	Costs	\$ -	\$ 34,282,690	\$ 119,766,075	\$ -	
	Balance	\$ -	\$ 41,239,310	\$ 134,528,935	\$ 134,528,935	
Blueprint	Revenues	\$ -	\$ 143,235,455	\$ 237,857,050	\$ 429,651,932	
	Costs	\$ -	\$ 72,175,393	\$ 233,117,528	\$ 24,234,392	
	Balance	\$ -	\$ 71,060,062	\$ 4,739,522	\$ 405,417,539	

6/12/2015

ID Num	Project Name	From	To	Strategy	Government	Current Year Cost	CRTPA		BP	YOE Cost	CRTPA		BP	YOE Cost	CRTPA		BP	YOE Cost	V	YOE Cost	Tier
							OA	SIS			OA	SIS			OA	SIS					
295	Bonnie Hill Rd	Chattahoochee City Limits	Flat Creek Rd	Widen from 2 Lanes to 4 Lanes	Gadsden														x	\$ 25,449,041	Beyond 2040
377	New Truck Route/Bypass	Thomasville Rd	Crump Rd	New 2 Lane Road	Leon														x	\$ 360,728,809	Beyond 2040
390	Apalachee Pkwy to Orange Ave Connector	Apalachee Pkwy/Conner Blvd Inte	Proposed extension of Orange Ave	New 2 Lane Road	Leon														x	\$ 50,768,737	Beyond 2040
1529	Commerce Blvd Extension	Old Woodville Hwy	Woodville Hwy	New 2 Lane Road	Wakulla														x	\$ 930,856	Beyond 2040
1474	Grady Rd/Fulton Rd	Henderson Rd	Sharer Rd	Widen from 2 Lanes to 4 Lanes	Leon														x	\$ 24,829,884	Beyond 2040
296	Flat Creek Rd	I-10	Bonnie Hill Rd/Little Sycamore Rd	Widen from 2 Lanes to 4 Lanes	Gadsden														x	\$ 9,141,044	Beyond 2040
173	New Monticello Rd Extension	Washington St	Waukeenah Hwy	New Road	Jefferson														x	\$ 15,319,890	Beyond 2040
300	Washington St Bypass - Chattahoochee	Washington St/River Landing Rd I	350 feet west of Maple St on Washington	New 2 Lane Road	Gadsden														x	\$ 7,262,370	Beyond 2040
431	Pine St Extension	Southern Terminus of Pine St	7th Ave	Roadway Extension	Leon														x	\$ 7,860,323	Beyond 2040
170	Washington St/Ashville Hwy	Ashville Hwy	Washington St	Road Realignment	Jefferson														x	\$ 1,282,842	Beyond 2040
403	Williams Rd to Tram Rd Connection	Tram Rd	Southwest corner of Williams Rd	New 2 Lane Road	Leon														x	\$ 32,107,097	Beyond 2040
694	Meridian Rd Parallel Road	Timberlane Rd	Fairbanks Ferry Rd	New 2 Lane Road	Leon														x	\$ 444,675,445	Beyond 2040
7	Alexander Rd	Rehwinkel Rd	Alexander Rd	Realignment	Wakulla														x	\$ 2,974,921	Beyond 2040
43	Bettstown Rd	Porter Mitchell Rd	FL/GA Line	Roadway and Multimodal Improvements	Gadsden														x	\$ 14,444,165	Beyond 2040
1133	Telogia Creek Rd	Havana Hwy	Juniper Creek Rd	Widen from 2 Lanes to 4 Lanes	Gadsden														x	\$ 15,258,398	Beyond 2040
1515	Quincy Bypass	Attapulgus Hwy	Solomon Dairy Rd	New 2 Lane Bypass Road Around Downto	Gadsden														x	\$ 15,491,642	Beyond 2040
42	Hosford Hwy	Gadsden/Liberty County Line	I-10	Widen from 2 Lanes to 4 Lanes	Gadsden														x	\$ 64,212,073	Beyond 2040
318	Tolar White Rd	Greensboro Hwy	Flat Creek Rd	Widen from 2 Lanes to 4 Lanes	Gadsden														x	\$ 21,384,234	Beyond 2040
323	Washington St Bypass	Washington St	River Landing Rd	New 2 Lane Road	Gadsden														x	\$ 13,496,346	Beyond 2040
386	Monticello Bypass	Washington St	Jefferson St	New 2 Lane Road	Jefferson														x	\$ 40,677,754	Beyond 2040
401	April Rd Extension	Tram Rd	April Rd and Old St Augustine Rd Intersect	New 2 Lane Road	Leon														x	\$ 113,837,915	Beyond 2040
2001	Jackson Bluff Rd/Capital Circle Southwest Roundabout			New Roundabout Intersection	Leon														x	\$ 572,508	Beyond 2040
46	Concord Rd	Iron Bridge Rd	Dorsey-Calvary Rd	Widen from 2 Lanes to 4 Lanes	Gadsden														x	\$ 48,080,070	Beyond 2040
1273	Apalachee Pkwy Frontage Road Removal	CSX Line	Governor's Square Mall	Roadway Improvements	Leon														x	\$ 56,288,138	Beyond 2040
1132	McPhaul Rd Reconstruction	Atwater Rd	Left Curve	Roadway Improvements	Gadsden														x	\$ 3,309,944	Beyond 2040
319	Bonnie Hill Rd	Gadsden/Liberty County Line	800 feet west of Lonnie Clark Rd	Widen from 2 Lanes to 4 Lanes	Gadsden														x	\$ 80,645,173	Beyond 2040

CRTPA Regional Mobility Plan 2040

Cost Feasible Plan Draft

Transit



	Tier 1	Tier 2	Tier 3	Tier 4	Beyond 2040
	2016-2020	2021-2025	2026-2030	2031-2040	Vision
Revenues		\$ 48,997,200	\$ 84,646,095	\$ 244,751,550	
Costs		\$ 24,411,105	\$ -	\$ -	\$ -
Balance		\$ 24,586,095	\$ 84,646,095	\$ 244,751,550	

5/5/2015

ID Num	Project Name	Description	Government	Current Year Cost		YOE Cost		YOE Cost		YOE Cost		YOE Cost		Tier
3026	Bus Stop Upgrades	Bring all stops into compliance with ADA and add passenger amenities	Leon	\$ 4,375,000										Tier 1
3027	Connection Centers	Three connection centers placed where three or more routes intersect	Leon	\$ 3,000,000										Tier 1
3028	Real-Time Bus Location Software	Implement real-time bus location software (DigiTally) (implemented by the City)	Leon	\$ 75,000										Tier 1
3029	Mobile Trip Planner	Implement iPhone and Android apps featuring a trip planning tool	Leon	\$ 25,000										Tier 1
3030	Variable Message Signs	Implement real-time status signs at Connection Centers and C.K. Steele Plaza	Leon	\$ 36,000										Tier 1
3031	Automatic Passenger Counters	Will provide improved passenger data and assist with future route modifications	Leon	\$ 182,500										Tier 1
3032	Stop Annunciation	Purchase stop annunciation software in conjunction with APCs.	Leon	\$ 328,500										Tier 1
3033	Transit Signal Prioritization	Traffic intersection signal timing in 2017 and 2018 (implemented by the City)	Leon	\$ 810,000										Tier 1
3034	Fixed-Route Buses	Vehicle replacement plan needs	Leon	\$ 33,000,000										Tier 1
3035	Demand Response Vans	Vehicle replacement plan needs	Leon	\$ 2,700,000										Tier 1
3036	Operations and Maintenance Facility	Necessary to increase fleet size and implement BRT	Leon	\$ 10,000,000										Tier 1
3040	C.K. Steele Plaza Renovations	Redevelop into a multi-story/multi-use facility	Leon	\$ 25,000,000										Tier 1
3041	Fareboxes	Validating farebox with magnetic & smart card reader	Leon	\$ 1,843,250										Tier 1
3037	BRT Infrastructure (including TVMs)	Infrastructure required as part of BRT implementation	Leon		x	\$ 14,656,180								Tier 2
3038	Park-and-Ride Lots	Thirteen park-and-ride locations are proposed (25 spaces each)	Leon		x	\$ 5,088,525								Tier 2
3039	Articulated Vehicles	Four vehicles for BRT service	Leon		x	\$ 4,420,800								Tier 2
3042	Fare Payment Application	Develop and implement smartphone-based fare payment applications	Leon		x	\$ 245,600								Tier 2



June 29, 2015

AGENDA ITEM 5 B 1

**FISCAL YEAR (FY) 2017 – FY 2021
REGIONAL MOBILITY PLAN (RMP)
ROADWAYS
PRIORITY PROJECT LIST (PPL)**

REQUESTED BY: CRTPA Staff

TYPE OF ITEM: Discussion

STATEMENT OF ISSUE

Staff is seeking CRTPA approval of the Fiscal Year (FY) 2017 – FY 2021 Regional Mobility Plan (RMP) Roadways Priority Project List (PPL) (***Attachment 1***). The RMP Roadways PPL contains roadway projects that were identified in the Connections 2040 RMP Roadway Cost Feasible Plan that is scheduled for adoption at the June 29, 2015 CRTPA meeting.

RECOMMENDATIONS BY CRTPA COMMITTEES

The CRTPA's two (2) committees (Citizens Multimodal Advisory Committee and Technical Advisory Committee) were scheduled to meet on June 23, 2015. Due to the development and distribution of the CRTPA agenda prior to the committee meetings, committee recommendations for this and other agenda items will be provided under separate cover prior to the meeting.

RECOMMENDED ACTION

Option 1: Adopt the FY 2017– FY 2021 RMP Roadways Priority Project List.

HISTORY AND ANALYSIS

The CRTPA annually adopts priority project lists (PPLs) to identify, in ranked order, the agency's transportation project priorities. The purpose of the lists is to provide the Florida Department of Transportation (FDOT) guidance as that agency proceeds with development of the Annual State Work Program. Specifically, the FDOT seeks to match available state and federal funding with eligible transportation projects ranked highest by the CRTPA. Although typically adopted in September of each year, the CRTPA's PPLs are scheduled for adoption at the June 29, 2015 due to the deadline for provision to the FDOT being moved up this year.

Subsequent to project receipt of funding in the annual State Work Program, a five-year document identifying state and federally funded transportation projects, the CRTPA incorporates those projects into the agency's annual Transportation Improvement Program (TIP).

The following PPLs are scheduled for adoption in 2015:

RMP Roadways PPL- Identifies roadway projects (Project source: Connections 2040 RMP Roadway Cost Feasible Plan)

Bicycle and Pedestrian PPL – Identifies bicycle and pedestrian projects (Project source: Connections 2040 RMP Roadway Cost Feasible Plan)

Transportation Systems Management (TSM) PPL – Identifies low cost (typically intersection) improvements to the existing transportation system that can be constructed in less than two years and have gone through a required FDOT process in order to be considered eligible for funding (Project source: FDOT provides a list of eligible projects)

Strategic Intermodal System (SIS) PPL – Identifies roadways on the Strategic Intermodal System (SIS) (Project source: SIS facilities that have been identified for transportation improvement in the Connections 2040 RMP Roadway Cost Feasible Plan)

Tallahassee International Airport PPL – Identifies Tallahassee International Airport projects consistent with the adopted Airport Master Plan (Project source: projects identified by The Tallahassee International Airport and provided to the CRTPA for adoption)

StarMetro PPL – Identifies transit projects consistent with StarMetro's adopted Transit Development Plan (Project source: projects identified by StarMetro and provided to the CRTPA for adoption)

Transportation Alternatives PPL – Identifies community-based projects that expand travel choices and enhance the transportation experience such as bicycle and pedestrian facilities, safe routes to school and scenic byways projects (Project source: eligible projects solicited by the CRTPA every two (2) years). NOTE: The FY 2017 - 2021 TA PPL adopted by CRTPA on April 20, 2015)

FY 2017 – FY 2021 RMP Roadways PPL

The Draft FY 2017 – FY 2021 RMP Roadways Plan PPL is comprised of the projects identified in the CRTPA's Connections 2040 RMP Roadway Cost Feasible Plan (scheduled for adoption prior to this agenda item at the June 29, 2015 CRTPA meeting). The Connections 2040 RMP has been under development since the project's official kickoff occurred at the April 14, 2014 CRTPA meeting.

RMP Roadways PPL Development: The FY 2017 – FY 2021 RMP Roadways PPL maintains the ranked order of the projects contained within adopted Connections 2040 RMP Roadway Cost Feasible Plan. Specifically, the order of projects that resulted in the development of the RMP Roadway Cost Feasible Plan from scoring using the CRTPA's approved prioritization was maintained. The criteria included providing points for roadway projects already under development in order to ensure that initiated projects proceed to completion, something that is ensured by maintaining consistency between the RMP CFP and the projects on the RMP Roadways PPL.

Additionally, the RMP Roadways PPL only contains those projects in the first Tier ("Tier 2") of the RMP (2021 – 2025) for which funding is anticipated to be available. Projects identified for funding in the outer tiers (Tier 3 (2026 – 2030) and Tier 4 (2031 – 2040)) are not included on the PPL. NOTE: Tier 1 projects in the RMP are those contained within the FY 2016 – FY 2020 Transportation Improvement Program (TIP), also scheduled for adoption at the June 29, 2015 CRTPA meeting.

The Draft RMP Roadways PPL identifies the project phase for which funding is sought.

Changes from last year's (FY 2016 – FY 2020) RMP PPL

This year's RMP Roadways PPL reflects the projects identified in the Connections 2040 RMP Roadway Cost Feasible Plan and, as such, provides a new listing of projects. Last year's (FY 2016 – FY 2020) RMP PPL reflected the project's identified in the agency's preceding (Year 2035) Regional Mobility Plan that was adopted in November 2010.

In addition to containing roadway projects, last year's RMP PPL also included bicycle and pedestrian projects. These projects are now included on a separate ("RMP Bicycle and Pedestrian Priority Project List", agenda item 5B2) priority project list.

Although, as noted above, this year's RMP Roadway PPL reflects a new listing of projects, the roadways major projects on last year's RMP PPL are also included on this year's RMP PPL.

PUBLIC INPUT

Public meetings to present the CRTPA's Draft FY 2017– 2021 Priority Project Lists (and agency's FY 2016 – FY 2021 Transportation Improvement Program) were held on June 10 & 11, 2015 throughout the CRTPA Region (Monticello, Crawfordville, Quincy and Tallahassee). Information regarding the meeting was published in the region's newspapers, placed on the CRTPA's website (www.crtpa.org) and an e-mail message regarding the meeting was sent to the agency's transportation partners.

NEXT STEPS

Subsequent to adoption of the CRTPA FY 2017 – FY 2021 PPLs, the lists will be provided to the FDOT for use as the agency proceeds with development of the Draft FY 2017 – FY 2021 Annual State Work Program.

The Draft Annual State Work Program is currently scheduled to be presented to the CRTPA Board by the FDOT at the October 2015 CRTPA Retreat. Subsequent to release of the Draft State Work Program, CRTPA staff will initiate development of the CRTPA FY 2017 – FY 2021 Transportation Improvement Program (TIP) incorporating those transportation projects in the CRTPA region that have received state and federal funding.

OPTIONS

Option 1: Adopt the FY 2017– FY 2021 RMP Roadways Priority Project List.
(RECOMMENDED)

Option 2: Provide other direction.

ATTACHMENTS

Attachment 1: FY 2017– FY 2021 RMP Roadways Priority Project List.
Attachment 2: PPL Public Comments

Capital Region Transportation Planning Agency
DRAFT RMP Roadways Priority Project List
 Fiscal Year 2017 - Fiscal Year 2021

Priority Rank	RMP ID#	Project Name	From	To	Project/Strategy	County	Funding Sought**
1	1026	Woodville Hwy*	Capital Circle Southeast	Paul Russell Rd	Widen from 2 Lanes to 4 Lanes	Leon	ROW
2	382	Capital Circle Southwest*	Springhill Rd	Orange Ave	Widen from 2 Lanes to 6 Lanes	Leon	CST
3	1513	Capital Circle Southwest*	Crawfordville Rd	Springhill Rd	Widen from 2 Lanes to 6 Lanes	Leon	ROW
4	1540	Crawfordville Rd	US 98	Lost Creek Bridge	Widen from 2 Lanes to 4 Lanes	Wakulla	ROW
5	308	Crawfordville Rd	Lost Creek Bridge	East Ivan Rd	Widen from 2 Lanes to 4 Lanes	Wakulla	CST
6	1554	Orange Ave*	Springhill Rd	Adams St	Widen from 2 Lanes to 4 Lanes	Leon	PD&E
7	383	Lake Bradford Rd/Springhill Rd*	Capital Circle Southwest	Gaines St	Widen to 4 Lanes	Leon	PD&E
8	181	Tharpe St*	Capital Circle Northwest	Ocala Rd	Widen from 2 Lanes to 4 Lanes	Leon	PD&E Re eval
9	3	Wakulla Environmental Institute Connection	Coastal Hwy	Crawfordville Rd	New 2 Lane Road	Wakulla	PD&E
10	75	Thomasville Rd, Meridian Rd, and 7th Ave Intersection*			Intersection Improvements	Leon	Feasibility Study
11	179	Bannerman Rd*	Tekesta Drive	Thomasville Rd	Widen from 2 Lanes to 4 Lanes	Leon	PE
12	369	Welaunee Blvd Extension*	Fleischmann Rd	South of I-10	New 4 Lane Road	Leon	PD&E
13	1571	Welaunee Blvd Extension*	South of I-10	Shamrock St	New 4 Lane Road	Leon	PD&E
14	138	Mahan Dr and Capital Circle Northeast Flyover			Intersection Improvements	Leon	Feasibility Study
15	1365	West Side Student Corridor Gateway (Pensacola St)*	Capital Circle Northwest	Appleyard Dr	Widen from 2 Lanes to 4 Lanes	Leon	PD&E Re eval
16	137	Welaunee Blvd/I-10 Interchange			New Interchange	Leon	PD&E
17	1527	Woodville Hwy/Natural Bridge Rd Roundabout			Roundabout	Leon	Feasibility Study
18	4	Old Lloyd Rd/Gamble Rd Intersection			Roundabout	Jefferson	Feasibility Study

* Also a Blueprint project

** CST= Construction

PD&E = Project Development and Environment Study

PE = Preliminary Engineering (Design)

ROW = Right of way

Project Priority List comments

Leon County Public meeting June 11, 2015

1. The TAP PPL seems to be handled similarly as the other PPLs. This PPL appears to be for the part (50%) of the TA funds that congress designated specifically (in MAP21) as local control, which in this case is local control by the CRTPA. It thus should be handled differently than the other PPLs
2. There is a long list of bikeped projects that cost less than \$300000. These are often projects that are cost-effective solutions. Providing good 'bang-for-the-buck'. Where is this list and why aren't we asking for federal and state contributions for these? Many of these involve state and federal highways.
3. Projects like the path along Roberts avenue connecting the Stuckey bikelanes to the Mabry bikelanes have disappeared (They are in the current RMP), as they have been folded into larger projects. (In this case the University Greenway). Needed projects are thus unnecessarily postponed.
4. The developed PPLs do not correspond to the goals of connections 2040 and the priorities of the community (safety, multimodal connections). Instead they promote sprawl.
5. With the exception of the Coastal trail projects, this BikePed PPL is a significant step backwards from the current RMP and previously submitted PPLs.
6. Project rank 12 (Capital cascade trail from Gamble to Monroe). It seems that this project is under construction and the part from Bronough to Gamble will be complete in 2017. Why is it on the PPL with these limits ?
7. Where are the bikelane projects ?? For example on US 90 from CapCircle NW to Ocala. The existing bikelanes from Capital Circle now abruptly end.

Comments from Hans van Tol



June 29, 2015

AGENDA ITEM 5 B 2

**FISCAL YEAR (FY) 2017 – FY 2021
REGIONAL MOBILITY PLAN (RMP)
BICYCLE AND PEDESTRIAN
PRIORITY PROJECT LIST (PPL)**

REQUESTED BY: CRTPA Staff

TYPE OF ITEM: Discussion

STATEMENT OF ISSUE

Staff is seeking CRTPA approval of the Fiscal Year (FY) 2017 – FY 2021 Regional Mobility Plan (RMP) Bicycle and Pedestrian Priority Project List (PPL) (***Attachment 1***). The RMP Bicycle and Pedestrian PPL contains bicycle and pedestrian projects that were identified in the Connections 2040 RMP Bicycle and Pedestrian Cost Feasible Plan that is scheduled for adoption at the June 29, 2015 CRTPA meeting.

RECOMMENDATIONS BY CRTPA COMMITTEES

The CRTPA's two (2) committees (Citizens Multimodal Advisory Committee and Technical Advisory Committee) were scheduled to meet on June 23, 2015. Due to the development and distribution of the CRTPA agenda prior to the committee meetings, committee recommendations for this and other agenda items will be provided under separate cover prior to the meeting.

RECOMMENDED ACTION

Option 1: Adopt the FY 2017– FY 2021 RMP Bicycle and Pedestrian Priority Project List.

HISTORY AND ANALYSIS

The CRTPA annually adopts priority project lists (PPLs) to identify, in ranked order, the agency's transportation project priorities. The purpose of the lists is to provide the Florida Department of Transportation (FDOT) guidance as that agency proceeds with development of the Annual State Work Program. Specifically, the FDOT seeks to match available state and federal funding with eligible transportation projects ranked highest by the CRTPA. Although typically adopted in September of each year, the CRTPA's PPLs are scheduled for adoption at the June 29, 2015 due to the deadline for provision to the FDOT being moved up this year.

Subsequent to project receipt of funding in the annual State Work Program, a five-year document identifying state and federally funded transportation projects, the CRTPA incorporates those projects into the agency's annual Transportation Improvement Program (TIP).

The following PPLs are scheduled for adoption in 2015:

RMP Roadways PPL- Identifies roadway projects (Project source: Connections 2040 RMP Roadway Cost Feasible Plan)

Bicycle and Pedestrian PPL – Identifies bicycle and pedestrian projects (Project source: Connections 2040 RMP Roadway Cost Feasible Plan)

Transportation Systems Management (TSM) PPL – Identifies low cost (typically intersection) improvements to the existing transportation system that can be constructed in less than two years and have gone through a required FDOT process in order to be considered eligible for funding (Project source: FDOT provides a list of eligible projects)

Strategic Intermodal System (SIS) PPL – Identifies roadways on the Strategic Intermodal System (SIS) (Project source: SIS facilities that have been identified for transportation improvement in the Connections 2040 RMP Roadway Cost Feasible Plan)

Tallahassee International Airport PPL – Identifies Tallahassee International Airport projects consistent with the adopted Airport Master Plan (Project source: projects identified by The Tallahassee International Airport and provided to the CRTPA for adoption)

StarMetro PPL – Identifies transit projects consistent with StarMetro's adopted Transit Development Plan (Project source: projects identified by StarMetro and provided to the CRTPA for adoption)

Transportation Alternatives PPL – Identifies community-based projects that expand travel choices and enhance the transportation experience such as bicycle and pedestrian facilities, safe routes to school and scenic byways projects (Project source: eligible projects solicited by the CRTPA every two (2) years). NOTE: The FY 2017 - 2021 TA PPL adopted by CRTPA on April 20, 2015)

FY 2017 – FY 2021 RMP Bicycle and Pedestrian PPL

The Draft FY 2017 – FY 2021 RMP Bicycle and Pedestrian PPL is comprised of the projects identified in the CRTPA's Connections 2040 RMP Bicycle and Pedestrian Cost Feasible Plan (scheduled for adoption prior to this agenda item at the June 29, 2015 CRTPA meeting). The Connections 2040 RMP has been under development since the project's official kickoff occurred at the April 14, 2014 CRTPA meeting.

Bicycle and Pedestrian PPL Development: The FY 2017 – FY 2021 RMP Bicycle and Pedestrian PPL maintains the ranked order of the projects contained within adopted Connections 2040 RMP Bicycle and Pedestrian Cost Feasible Plan. Specifically, the order of projects that resulted in the development of the RMP Bicycle and Pedestrian Cost Feasible Plan from scoring using the CRTPA's approved prioritization was maintained. The criteria included providing points for bicycle and pedestrian projects already under development in order to ensure that initiated projects proceed to completion, something that is ensured by maintaining consistency between the RMP CFP and the project on the RMP Bicycle and Pedestrian PPL.

Like the RMP Roadways PPL, the Bicycle and Pedestrian PPL only contains those projects in the first Tier ("Tier 2") of the RMP (2021 – 2025) for which funding is anticipated to be available. Projects identified for funding in the outer tiers (Tier 3 (2026 – 2030) and Tier 4 (2031 – 2040)) are not included on the PPL. NOTE: Tier 1 projects in the RMP are those contained within the FY 2016 – FY 2020 Transportation Improvement Program (TIP), also scheduled for adoption at the June 29, 2015 CRTPA meeting.

The Draft RMP Bicycle and Pedestrian PPL identifies the project phase for which funding is sought.

Changes from last year's (FY 2016 – FY 2020) RMP PPL

This year's RMP Bicycle and Pedestrian PPL reflects the projects identified in the Connections 2040 RMP Bicycle and Pedestrian Cost Feasible Plan and, as such, provides a new listing of projects. Last year's (FY 2016 – FY 2020) RMP PPL reflected the project's identified in the agency's preceding (Year 2035) Regional Mobility Plan that was adopted in November 2010.

In addition to containing bicycle and pedestrian projects, last year's RMP PPL also included roadway projects. These projects are now included on a separate ("RMP Roadways Priority Project List", agenda item 5B1) priority project list.

PUBLIC INPUT

Public meetings to present the CRTPA's Draft FY 2017– 2021 Priority Project Lists (and agency's FY 2016 – FY 2021 Transportation Improvement Program) were held on June 10 & 11, 2015 throughout the CRTPA Region (Monticello, Crawfordville, Quincy and Tallahassee). Information regarding the meeting was published in the region's newspapers, placed on the CRTPA's website (www.crtpa.org) and an e-mail message regarding the meeting was sent to the agency's transportation partners.

NOTE: Received public comments are included in Attachment 2 of Agenda Item 5 B 1 ("RMP Roadway Priority Project List").

NEXT STEPS

Subsequent to adoption of the CRTPA FY 2017 – FY 2021 PPLs, the lists will be provided to the FDOT for use as the agency proceeds with development of the Draft FY 2017 – FY 2021 Annual State Work Program.

The Draft Annual State Work Program is currently scheduled to be presented to the CRTPA Board by the FDOT at the October 2015 CRTPA Retreat. Subsequent to release of the Draft State Work Program, CRTPA staff will initiate development of the CRTPA FY 2017 – FY 2021 Transportation Improvement Program (TIP) incorporating those transportation projects in the CRTPA region that have received state and federal funding.

OPTIONS

Option 1: Adopt the FY 2017– FY 2021 RMP Bicycle and Pedestrian Priority Project List.
(RECOMMENDED)

Option 2: Provide other direction.

ATTACHMENTS

Attachment 1: FY 2017– FY 2021 RMP Bicycle and Pedestrian Priority Project List.

Capital Region Transportation Planning Agency
DRAFT RMP Bicycle and Pedestrian Priority Project List
 Fiscal Year 2017 - Fiscal Year 2021

Priority Rank	RMP ID#	Project Name	From	To	Project/Strategy	County	Funding Sought**
1	156	Florida Arts Trail	North Corry St	Florida Georgia Hwy	Shared Use Path	Gadsden	PE
2	561	Coastal Trail West - CC2ST	Northern US 98/319 Split	Ochlockonee Bay Trail	Shared Use Path	Wakulla	PE
3	422	Glenview Dr	Meridian Rd	Thomasville Rd	Sidewalk	Leon	CST
4	543	Wakulla Environmental Institute Trail - CC2ST	Coastal Hwy	Crawfordville Hwy	Shared Use Path	Wakulla	PE
5	160	Quincy to Midway/US 90 Trail	Madison St	Dover Rd	Shared Use Path	Gadsden	PD&E
6	1556	Magnolia Dr	Monroe St	Lafayette St	Sidewalk	Leon	CST
7	550	Bloxham Cutoff Rd Trail - CC2ST	Proposed Lake Henrietta South	Shadeville Rd	Shared Use Path	Wakulla	PE
8	567	Monticello Bike Trail Extension	Southern Terminus of Monticello Bike Trail	Jefferson County Middle/High School	Shared Use Path	Jefferson	PD&E
9	1254	Martin Rd Trail	Bike Trail	Jefferson St	Shared Use Path	Jefferson	PD&E
10	136	St Marks Trail Connection to Orange Ave	St Marks Trail	Orange Ave	Bike Intersection	Leon	PE
11	542	Coastal Trail East - CC2ST	Early Bird Trail	Shadeville Rd	Shared Use Path	Wakulla	PE
12	447	Capital Cascades Trail*	Gamble St	Monroe St	Shared Use Path	Leon	CST
13	454	Goose Pond Trail*	Mahan Dr and Fort Knox Blvd Intersection	Southeast Corner of Weems Rd	Shared Use Path	Leon	PD&E
14	456	Capital Cascades Trail*	Springhill Rd	Mill St	Shared Use Path	Leon	CST
15	527	Thomasville Rd Trail*	Meridian Rd	Live Oak Plantation Rd	Shared Use Path	Leon	PD&E

* Also a Blueprint project

** CST= Construction

PD&E = Project Development and Environment Study

PE = Preliminary Engineering (Design)

ROW = Right of way



June 29, 2015

AGENDA ITEM 5 B 3

**FISCAL YEAR (FY) 2017 – FY 2021
TRANSPORTATION SYSTEMS MANAGEMENT
PRIORITY PROJECT LIST (PPL)**

REQUESTED BY: CRTPA Staff

TYPE OF ITEM: Discussion

STATEMENT OF ISSUE

Staff is seeking CRTPA approval of the Fiscal Year (FY) 2017 – FY 2021 Transportation Systems Management (TSM) Priority Project List (PPL) (***Attachment 1***). The TSM PPL identifies relatively low cost improvements to the existing transportation system that can be constructed in less than two years (such as intersection improvements).

RECOMMENDATIONS BY CRTPA COMMITTEES

The CRTPA's two (2) committees (Citizens Multimodal Advisory Committee and Technical Advisory Committee) were scheduled to meet on June 23, 2015. Due to the development and distribution of the CRTPA agenda prior to the committee meetings, committee recommendations for this and other agenda items will be provided under separate cover prior to the meeting.

RECOMMENDED ACTION

Option 1: Adopt the FY 2017– FY 2021 Transportation Systems Management Priority Project List.

HISTORY AND ANALYSIS

The Transportation Systems Management (TSM) Priority Project List identifies relatively low cost improvements to the existing transportation system that can be constructed in less than two years.

The CRTPA TSM PPL is comprised largely of those TSM projects included on the FDOT District 3's TSM Candidate List. Typically, in order to be considered for funding, such projects must be included on the District's list. Associated with the FDOT Candidate List is a TSM project process developed by the

FDOT. **Attachment 2** provides a description of this process and how warranted TSM projects are placed on the FDOT Candidate TSM list and receive funding.

The Draft FY 2017 – FY 2021 TSM PPL was developed in close coordination with the FDOT District 3 Traffic Operations Office. Guidance related to the prioritization of projects on the TSM PPL was most recently formalized in 2013 by the TSM Subcommittee, discussed below.

TSM Subcommittee

The CRTPA TSM Subcommittee was formed in May 2013 to review the agency's TSM prioritization process and develop recommendations for ranking the TSM PPL. The subcommittee was comprised of members from the CRTPA's two committees (Technical Advisory Committee and Citizens Multimodal Advisory Committee) and developed (and approved) the following criteria for use in evaluating projects on the CRTPA's TSM PPL:

Safety/Crash Data - Ensure that the latest information is available

Level of Service information – Information from traffic study

Mobility Impact – Examine impact of proposed improvement to overall mobility

Existing Priority – Generally seek to maintain project ranking consistency

Project Consistency with local government plans and initiatives – Seek to document project confirmation with local staff such as public works director/planning)

CRTPA Technical Advisory Committee (TAC)

At the March 3, 2015 CRTPA TAC meeting, staff updated the TAC on the development and ranking of projects to be included on the Draft Fiscal Year (FY) 2017 – FY 2021 TSM PPL in order to receive input from the local government staff serving on the committee. Although no formal action was taken, TAC members discussed changing the Apalachee Parkway/Magnolia Drive pedestrian safety study limits to incorporate Lafayette Street intersection (just south of Magnolia).

Draft FY 2017 – FY 2021 TSM Priority Project List

The Draft FY 2017– 2021 TSM Priority Project List contains TSM projects in proposed priority order. Project information related to the following, where available, is provided for each project:

- **Safety Data:** Safety data associated with each candidate project's traffic study (where available) is provided.
- **Level of Service Information:** Information related to the project's roadway/intersection level of service is provided as contained within the completed traffic study from the FDOT (if applicable).
- **Mobility Impact:** Information related to pedestrian demand was identified for each TSM candidate project. Information regarding sidewalk availability was identified as well as information related to availability of transit at each TSM candidate project's location is also included.

Changes From Last Year's (FY 2016 – FY 2020) TSM PPL

The Draft FY 2017 – FY 2021 TSM PPL contains the following changes from last year's (FY 2016 – FY 2020) TSM Priority Project List:

- **PROJECT REMOVAL**
Crawfordville Road (SR 61) at Bloxham Cutoff (SR 267)*
Last year's number (#) 1 ranked project is recommended for removal from the list. The proposed improvement (and related 3 other Crawfordville Road intersections, discussed below) is incorporated within the limits of the Crawfordville Road project that is funded for capacity improvement and, as such, will occur as part of the larger roadway project.

*NOTE: This project also included intersection improvements at the following Crawfordville Rd intersections in Wakulla County: Arran Rd/MLK, Jr. Memorial Blvd; Wakulla-Arran Rd; and, Ivan Church Rd North which are also included within limits of larger roadway project.
- **PROJECT UPDATE**
Capital Circle NW @ Stoneler Road
Last year's #2 ranked project (Capital Circle NW @ Stoneler Road) has been updated to reflect completion of a recent traffic operations study update. Project was originally studied in 2005 and the project's concept was updated in 2015. The project involves the proposed construction of a northbound left turn lane on Capital Circle. This project is recommended to remain ranked #2 on the TSM PPL.

- PROJECT ADDITION

- Monroe Street (US 27) at Talpeco Drive

- This project has been added to the TSM PPL as it was recently placed on the FDOT District 3 list of candidate projects at the request of a citizen via a comment provided to the City of Tallahassee's website. A traffic operations study was completed in September 2014 and a project concept study was completed in May 2015. The project involves the proposed installation of a traffic signal at this location as well as construction of westbound right turn lane on Talpeco Road. This project is recommended to be ranked #1 due to the documented safety issues at this location.

- PROJECT ADDITION

- Apalachee Parkway (SR 20) and Magnolia Drive (SR 265) Pedestrian Safety Improvements

- The CRTPA has met several times with the FDOT to discuss pedestrian challenges at this location due to the high volume of vehicular traffic, large number of lanes to cross and associated crosswalk distances (including the absence of a marked crosswalk on the east side of intersection). A planning level study was initiated by the FDOT at this location in the spring of 2015.

Additionally, the recent completion of Apalachee Parkway sidewalks east of this location (as well as the planned construction of sidewalks beginning approximately .7 miles to the west associated with scheduled resurfacing of the Parkway in 2016) has facilitated increased pedestrian mobility in this regional commercial corridor. Furthermore, a multiuse trail is planned on the eastside of Magnolia connecting to Apalachee Parkway.

The CRTPA most recently met with the FDOT representatives in May and discussed this proposed project including the CRTPA's TAC recommendation, discussed above, that the study include the Magnolia/Lafayette Street intersection to the south. This project is recommended for ranking as #3 on the TSM PPL.

PUBLIC INPUT

Public meetings to present the CRTPA's Draft FY 2017– 2021 Priority Project Lists (and agency's FY 2016 – FY 2021 Transportation Improvement Program) were held on June 10 & 11, 2015 throughout the CRTPA Region (Monticello, Crawfordville, Quincy and Tallahassee). Information regarding the meeting was published in the region's newspapers, placed on the CRTPA's website (www.crtpa.org) and an e-mail message regarding the meeting was sent to the agency's transportation partners.

NOTE: Received public comments are included in Attachment 2 of Agenda Item 5 B 1 ("RMP Roadway Priority Project List").

NEXT STEPS

Subsequent to adoption of the CRTPA FY 2017 – FY 2021 PPLs, the lists will be provided to the FDOT for use as the agency proceeds with development of the Draft FY 2017 – FY 2021 Annual State Work Program.

The Draft Annual State Work Program is currently scheduled to be presented to the CRTPA Board by the FDOT at the October 2015 CRTPA Retreat. Subsequent to release of the Draft State Work Program, CRTPA staff will initiate development of the CRTPA FY 2017 – FY 2021 Transportation Improvement Program (TIP) incorporating those transportation projects in the CRTPA region that have received state and federal funding.

OPTIONS

Option 1: Adopt the FY 2017– FY 2021 Transportation Systems Management Priority Project List.
(RECOMMENDED)

Option 2: Provide other direction.

ATTACHMENTS

Attachment 1: DRAFT FY 2017 – FY 2021 TSM Priority Project List
Attachment 2: FDOT TSM Project Process

Capital Region Transportation Planning Agency
DRAFT Transportation Systems Management (TSM) Priority Project List
 Fiscal Year 2017 - Fiscal 2021

Recommended Rank	Previous Rank	Major Street	Minor Street	Proposed Improvements	Study Date	Intersection LOS	Safety Information (from Traffic Study):	Mobility Information
1	N/A	Monroe Street (US 27)	Talpeco Road	Construct a traffic signal and WBRT* (*West Bound Right Turn lane)	May 2015 (Concept Report)	C	33 documented crashes in most recent 5-year analysis period (2009-2013); 8 reported injuries.	Low Pedestrian Demand Area No bus service Unsignalized intersection
	PROJECT INFORMATION: Concept report recommends construction of a 155' westbound right turn lane and installation of a traffic signal. Total estimated project cost (construction and right-of-way) is \$626,000 (Alternate 1) or \$684,000 (Alternate 2). The alternates differ only on the type of signal pole that is employed.							
2	2	Capital Circle, NW (SR 263)	Stoneler Road	Construct NBLT* w/235' of storage (*North Bound Left Turn lane)	January 2015 (Concept Report)	D	6 documented crashes in most recent 5-year analysis period (2009-2013); 1 reported injury.	Low Pedestrian Demand Area No bus service Unsignalized intersection
	PROJECT INFORMATION: Concept Report recommends construction of a northbound left turn lane at Stoneler Road. Construction and right-of-way estimate: \$370,000.							
3	N/A	Apalachee Parkway	Magnolia Drive/Lafayette Street	Conduct a study to determine needed modifications to intersection to improve pedestrian safety.	N/A	Study not performed	Traffic Study has NOT been conducted. A pedestrian count was conducted in April 2015 associated with an intersection pedestrian study by FDOT District 3 at this location.	Moderate Pedestrian Demand Area Bus service ("Gulf" and "Southwood Express" routes) Signalized intersection; large crossing distance
	PROJECT INFORMATION: This intersection provides challenges to pedestrians given the high volume of vehicular traffic, large number of lanes to cross and associated crosswalk distances (including the absence of a marked crosswalk on the east side of intersection). Additionally, the recent completion of Apalachee Parkway sidewalks east of this location (as well as the planned construction of sidewalks beginning approximately .7 miles to the west associated with scheduled resurfacing of the Parkway in 2016) has facilitated increased pedestrian mobility in this regional commercial corridor. Additionally, a multi-use trail is planned on the east side of Magnolia that will terminate its northern most limits at this intersection. At the March 2015 CRTPA TAC meeting, members requested that any study also incorporate the Lafayette/Magnolia intersection just south of Apalachee Parkway.							

The Transportation Systems Management (TSM) Project Process:

- ❑ The TPO, a local government or a citizen requests that FDOT study an intersection (which must include at least one State roadway). The FDOT will then complete the study within 12 weeks (dependent on work load).
- ❑ If a study has already been performed, then that study can be submitted to the FDOT ("Signed and Sealed by a Profession Engineer registered in the Sate of Florida") for review and approval.
- ❑ Once complete, if the study indicates that an improvement is warranted and would require right-of-way purchase or is too costly (over \$200,000) to be a 'push button' (fast response type) or regular traffic operations project (goes through the normal bidding process), then the project is placed on the Candidate TSM Project List.
- ❑ **In order to be selected as a TSM work program project, the project must have a completed concept** (unless the project is to be developed under a JPA and/or the FDOT is providing money to another entity to construct the project). A concept identifies the improvements and the associated present day construction and right of way cost.
- ❑ Due to FDOT staff reductions, District 3's general consultant has been assigned responsibility for TSM concept report development and is limited to 4 or 5 per year across the district.
- ❑ Typically, the FDOT sends the CRTPA the Candidate TSM Project List (in no priority order) in July for review and requests that the CRTPA finalize the project priority list by September 1.
- ❑ In the past, FDOT D-3 Traffic Operations has been allocated \$2 million annually for TSM projects. This will increase to \$2.75 Million for FY 2010. Due to this limited funding, typically (depending on the complexity of the project) only the TPO's top TSM candidate project is funded annually. This \$2.75 million must cover 4 TPO areas in the district. And, if any funds remain, consider some of the smaller counties that are not covered by a TPO area if they have candidate TSM project needs.
- ❑ Development of a concept report for a project to move forward with production typically takes 6 months. Due to this timeline, the FDOT annually reviews the current TSM priority list in December and selects projected candidate projects to be funded in the next year's Work Program cycle. In the past 2 years, the FDOT D3 Traffic Operations office has solicited input from the TAC in this selection process. Typically, the next unfunded TSM project priority would move to number one upon funding of the number one TSM project. One reason for this is to provide consistency to the FDOT on what projects are important to the CRTPA as well as to ensure adequate time for the development of a completed concept prior to inclusion in the FDOT Annual Work Program. However, this does not pre-empt other candidate projects from being added to the list as they are identified. Safety issues or critical need related to these new projects may override the typical process for the next unfunded candidate project to move up to number one and is certainly understood by FDOT.

Note: The Traffic Operations office aggressively seeks opportunities to include any candidate project improvements in larger Work Program projects or the Strategic Highway Safety Plan projects. Every 6 months, the Work Program of projects is reviewed to see if any new projects encompassing the candidate TSM project area has been funded. In addition, opportunities to implement improvements through developers are also aggressively pursued. This helps stretch the available TSM funding and maximizes its potential to fund TSM projects.



June 29, 2015

AGENDA ITEM 5 B 4

**FISCAL YEAR (FY) 2017 – FY 2021
REGIONAL MOBILITY PLAN (RMP)
STRATEGIC INTERMODAL SYSTEM (SIS)
PRIORITY PROJECT LIST (PPL)**

REQUESTED BY: CRTPA Staff

TYPE OF ITEM: Discussion

STATEMENT OF ISSUE

Staff is seeking CRTPA approval of the Fiscal Year (FY) 2017 – FY 2021 Regional Mobility Plan (RMP) Strategic Intermodal System (SIS) Priority Project List (PPL) (**Attachment 1**). The RMP SIS PPL contains SIS projects that were identified in the Connections 2040 RMP Roadway Cost Feasible Plan that is scheduled for adoption at the June 29, 2015 CRTPA meeting.

RECOMMENDATIONS BY CRTPA COMMITTEES

The CRTPA's two (2) committees (Citizens Multimodal Advisory Committee and Technical Advisory Committee) were scheduled to meet on June 23, 2015. Due to the development and distribution of the CRTPA agenda prior to the committee meetings, committee recommendations for this and other agenda items will be provided under separate cover prior to the meeting.

RECOMMENDED ACTION

Option 1: Adopt the FY 2017– FY 2021 RMP SIS Priority Project List.

HISTORY AND ANALYSIS

In 2003, Florida's Legislature and Governor established Florida's Strategic Intermodal System, known as the SIS. The SIS is based on the 2020 Florida Transportation Plan (FTP), which calls for the development of a "strategic intermodal system" to enhance Florida's economic competitiveness. The FTP recommends that this system "provide for smooth and efficient transfers for both passengers and freight between seaports, airports, railroads, highways and other elements of the strategic intermodal system and reduce delay for people and goods movement through increased system efficiency and multimodal capacity."

CRTPA SIS FACILITIES

The following roadways are on the Strategic Intermodal System (SIS) system in the CRTPA planning area:

1. Interstate 10 – From Jackson County Line (in the east) to the Madison County Line (in the west),
2. Thomasville Road from Interstate 10 to the Georgia State line (Leon County),
3. Capital Circle, Northwest from Interstate 10 to the Tallahassee Regional Airport (Leon County),
4. Tennessee Street/Mahan Drive from the Greyhound Bus Terminal to Interstate 10 (East) (Leon County), and
5. US 19 from the Georgia State Line to the Madison County Line (Jefferson County).

FY 2017 – FY 2021 RMP SIS PPL

The FY 2017 – FY 2021 RMP SIS PPL is comprised of the SIS projects identified in the CRTPA's Connections 2040 RMP Roadway Cost Feasible Plan (scheduled for adoption prior to this agenda item at the June 29, 2015 CRTPA meeting). The Connections 2040 RMP has been under development since the project's official kickoff occurred at the April 14, 2014 CRTPA meeting.

SIS PPL Development: The FY 2017 – FY 2021 RMP SIS PPL was developed through the identification of SIS roadway projects contained within the adopted Connections 2040 RMP Roadway Cost Feasible Plan. The projects were then placed on a separate list that maintains the priority order of the projects as contained in Costa Feasible Plan.

The Draft RMP SIS PPL identifies the project phase for which funding is sought.

Changes from last year's (FY 2016 – FY 2020) SIS PPL

This year's RMP SIS PPL reflects the SIS projects identified in the Connections 2040 RMP Roadway Cost Feasible Plan and, as such, provides a new listing of projects. Last year's (FY 2016 – FY 2020) SIS PPL reflected the project's identified in the agency's preceding (Year 2035) Regional Mobility Plan that was adopted in November 2010.

PUBLIC INPUT

Public meetings to present the CRTPA's Draft FY 2017– 2021 Priority Project Lists (and agency's FY 2016 – FY 2021 Transportation Improvement Program) were held on June 10 & 11, 2015 throughout the CRTPA Region (Monticello, Crawfordville, Quincy and Tallahassee). Information regarding the meeting was published in the region's newspapers, placed on the CRTPA's website (www.crtpa.org) and an e-mail message regarding the meeting was sent to the agency's transportation partners.

NOTE: Received public comments are included in Attachment 2 of Agenda Item 5 B 1 ("RMP Roadway Priority Project List").

NEXT STEPS

Subsequent to adoption of the CRTPA FY 2017 – FY 2021 PPLs, the lists will be provided to the FDOT for use as the agency proceeds with development of the Draft FY 2017 – FY 2021 Annual State Work Program.

The Draft Annual State Work Program is currently scheduled to be presented to the CRTPA Board by the FDOT at the October 2015 CRTPA Retreat. Subsequent to release of the Draft State Work Program, CRTPA staff will initiate development of the CRTPA FY 2017 – FY 2021 Transportation Improvement Program (TIP) incorporating those transportation projects in the CRTPA region that have received state and federal funding.

OPTIONS

Option 1: Adopt the FY 2017– FY 2021 RMP SIS Priority Project List.
(RECOMMENDED)

Option 2: Provide other direction.

ATTACHMENTS

Attachment 1: FY 2017– FY 2021 RMP SIS Priority Project List.

Capital Region Transportation Planning Agency
DRAFT RMP Strategic Intermodal System Priority Project List
 Fiscal Year 2017 - Fiscal Year 2021

Priority Rank	RMP ID#	Project Name	From	To	Project/Strategy	County	Funding Sought**
1	382	Capital Circle Southwest*	Springhill Rd	Orange Ave	Widen from 2 Lanes to 6 Lanes	Leon	CST
2	138	Mahan Dr and Capital Circle Northeast Flyover			Intersection Improvements	Leon	Feasibility Study
3	137	Welaunee Blvd/I-10 Interchange			New Interchange	Leon	PD&E

* Also a Blueprint project

** CST= Construction

PD&E = Project Development and Environment Study



June 29, 2015

AGENDA ITEM 5 B 5

**FISCAL YEAR (FY) 2017 – FY 2021
STARMETRO
PRIORITY PROJECT LIST (PPL)**

REQUESTED BY: CRTPA Staff

TYPE OF ITEM: Discussion

STATEMENT OF ISSUE

Staff is seeking approval of the Fiscal Year (FY) 2017 – FY 2021 StarMetro Priority Project List, included as ***Attachment 1***.

CRTPA COMMITTEE ACTIONS

The CRTPA's two (2) committees (Citizens Multimodal Advisory Committee and Technical Advisory Committee) were scheduled to meet on June 23, 2015. Due to the deadline associated with development and distribution of the CRTPA agenda, any committee recommendations for this and other agenda items will be provided under separate cover prior to the meeting.

RECOMMENDED ACTION

Option 1: Adopt the FY 2017 – FY 2021 StarMetro Project List.

HISTORY AND ANALYSIS

Annually, the Capital Region Transportation Planning Agency (CRTPA) provides a listing of projects to the Florida Department of Transportation (FDOT), in priority order, for funding consideration. One of these lists is the StarMetro Project Priority List. Unlike other lists adopted by the CRTPA, this list is developed by the City of Tallahassee's transit agency, StarMetro. Projects contained on this list are consistent with StarMetro's adopted Transit Development Plan (TDP).

The StarMetro PPL provides guidance to the FDOT as the agency proceeds with development of the Annual State Work Program. Ultimately, the projects included within the FDOT Work Program serve as the basis for the CRTPA's Transportation Improvement Program (TIP).

PUBLIC INPUT

Public meetings to present the CRTPA's Draft FY 2016 – 2020 Priority Project Lists to the public were held on June 10 & 11, 2015 throughout the CRTPA Region (Monticello, St. Marks, Tallahassee and Quincy). Information regarding the meeting was published in the region's newspapers, placed on the CRTPA's website (www.crtpa.org) and an e-mail message regarding the meeting was sent to the agency's transportation partners.

NOTE: Received public comments are included in Attachment 2 of Agenda Item 5 B 1 ("RMP Roadway Priority Project List").

NEXT STEPS

Subsequent to adoption of the CRTPA FY 2017 – FY 2021 PPLs, the lists will be provided to the FDOT for use as the agency proceeds with development of the Draft FY 2017 – FY 2021 Annual State Work Program.

The Draft Annual State Work Program is currently scheduled to be presented to the CRTPA Board by the FDOT at the October 2015 CRTPA Retreat. Subsequent to release of the Draft State Work Program, CRTPA staff will initiate development of the CRTPA FY 2017 – FY 2021 Transportation Improvement Program (TIP) incorporating those transportation projects in the CRTPA region that have received state and federal funding.

OPTIONS

Option 1: Adopt the FY 2017 – FY 2021 Tallahassee International Airport Priority Project List.
(Recommended)

Option 2: Provide other direction.

ATTACHMENT

Attachment 1: DRAFT FY 2017 – FY 2021 StarMetro Priority Project List

StarMetro
Priority Project List
Fiscal Year 2017 - Fiscal Year 2021

Work Program Item	Description	Funding Source	%	Proposed FY 16 2015-2016	Proposed FY 17 2016-2017	Proposed FY 18 2017-2018	Proposed FY 19 2018-2019	Proposed FY 20 2019-2020	Proposed FY 21 2020-2021
422251-2-94-15	Capital for Fixed Route	FTA Section 5307	80%	1,562,574					
	Purchase Vehicles/Equipment, Build/Expand/Repair/Renovate Facilities , Planning, Security, Transit Enhancements	TRC	20%	390,644					
422251-3-84-15	Operating for Fixed Route	FTA Section 5307	50%	1,566,032					
	Operating costs for equipment and facilities, and JARC projects.	Local Funds	50%	1,566,032					
422251-2-94-16	Capital for Fixed Route	FTA Section 5307	80%		1,609,451				
	Purchase Vehicles/Equipment, Build/Expand/Repair/Renovate Facilities , Planning, Security, Transit Enhancements	TRC	20%		402,363				
422251-3-84-16	Operating for Fixed Route	FTA Section 5307	50%		1,613,013				
	Operating costs for equipment and facilities, and JARC projects.	Local Funds	50%		1,613,013				
422251-2-94-17	Capital for Fixed Route	FTA Section 5307	80%			1,657,735			
	Purchase Vehicles/Equipment, Build/Expand/Repair/Renovate Facilities , Planning, Security, Transit Enhancements	TRC	20%			414,434			
422251-3-84-17	Operating for Fixed Route	FTA Section 5307	50%			1,661,403			
	Operating costs for equipment and facilities, and JARC projects.	Local Funds	50%			1,661,403			
422251-2-94-18	Capital for Fixed Route	FTA Section 5307	80%				1,707,467		
	Purchase Vehicles/Equipment, Build/Expand/Repair/Renovate Facilities , Planning, Security, Transit Enhancements	TRC	20%				426,867		
422251-3-84-18	Operating for Fixed Route	FTA Section 5307	50%				1,711,245		
	Operating costs for equipment and facilities, and JARC projects.	Local Funds	50%				1,711,245		

StarMetro
Priority Project List
Fiscal Year 2017 - Fiscal Year 2021

Work Program Item	Description	Funding Source	%	Proposed FY 16 2015-2016	Proposed FY 17 2016-2017	Proposed FY 18 2017-2018	Proposed FY 19 2018-2019	Proposed FY 20 2019-2020	Proposed FY 21 2020- 2021
422251-2-94-19	Capital for Fixed Route	FTA Section 5307	80%					1,758,691	
	Purchase Vehicles/Equipment, Build/Expand/Repair/Renovate Facilities , Planning, Security, Transit Enhancements	TRC	20%					439,673	
422251-3-84-19	Operating for Fixed Route	FTA Section 5307	50%					1,762,583	
	Operating costs for equipment and facilities, and JARC projects.	Local Funds	50%					1,762,583	
422251-2-94-20	Capital for Fixed Route	FTA Section 5307	80%						1,811,452
	Purchase Vehicles/Equipment, Build/Expand/Repair/Renovate Facilities , Planning, Security, Transit Enhancements	TRC	20%						452,863
422251-3-84-20	Operating for Fixed Route	FTA Section 5307	50%						1,815,460
	Operating costs for equipment and facilities, and JARC projects.	Local Funds	50%						1,815,460
425269-8-94-01	Capital for Fixed Route	FTA Section 5339	80%	339,876					
	Replace, rehabilitate and purchase buses and related equipment and construct bus-related facilities	TRC	20%	84,969					
425269-9-94-01	Capital for Fixed Route	FTA Section 5339	80%		350,072				
	Replace, rehabilitate and purchase buses and related equipment and construct bus-related facilities	TRC	20%		87,518				
425269-9-94-02	Capital for Fixed Route	FTA Section 5339	80%			360,574			
	Replace, rehabilitate and purchase buses and related equipment and construct bus-related facilities	TRC	20%			90,144			

StarMetro
Priority Project List
Fiscal Year 2017 - Fiscal Year 2021

Work Program Item	Description	Funding Source	%	Proposed FY 16 2015-2016	Proposed FY 17 2016-2017	Proposed FY 18 2017-2018	Proposed FY 19 2018-2019	Proposed FY 20 2019-2020	Proposed FY 21 2020- 2021
425269-9-94-03	Capital for Fixed Route	FTA Section 5339	80%				371,392		
	Replace, rehabilitate and purchase buses and related equipment and construct bus-related facilities	TRC	20%				92,848		
425269-9-94-04	Capital for Fixed Route	FTA Section 5339	80%					382,533	
	Replace, rehabilitate and purchase buses and related equipment and construct bus-related facilities	TRC	20%					95,633	
425269-9-94-05	Capital for Fixed Route	FTA Section 5339	80%						394,009
	Replace, rehabilitate and purchase buses and related equipment and construct bus-related facilities	TRC	20%						98,502
421364-2-84-35	Formula Grants for Rural Areas	FTA 5311	50%	213,235					
		Local Funds	50%	213,235					
421364-2-84-36	Formula Grants for Rural Areas (only program FY 17 funding estimate in work program)	FTA 5311	50%		219,632				
		Local Funds	50%		219,632				
421364-2	Formula Grants for Rural Areas	FTA 5311	50%			226,221			
		Local Funds	50%			226,221			
421364-2	Formula Grants for Rural Areas	FTA 5311	50%				233,007		
		Local Funds	50%				233,007		
421364-2	Formula Grants for Rural Areas	FTA 5311	50%					239,998	
		Local Funds	50%					239,998	
421364-2	Formula Grants for Rural Areas	FTA 5311	50%						247,197
		Local Funds	50%						247,197
433685-1-94-01	Formula Grants for the Enhanced Mobility of Seniors & Individual w/Disabilities	FTA 5310	80%	96,996					
	Purchase ADA Compliant Vehicles and Bus Stop Amenities	Local Funds	20%	24,249					

StarMetro
Priority Project List
Fiscal Year 2017 - Fiscal Year 2021

Work Program Item	Description	Funding Source	%	Proposed FY 16 2015-2016	Proposed FY 17 2016-2017	Proposed FY 18 2017-2018	Proposed FY 19 2018-2019	Proposed FY 20 2019-2020	Proposed FY 21 2020-2021
433685-1-94-01	Formula Grants for the Enhanced Mobility of Seniors & Individual w/Disabilities	FTA 5310	80%		99,906				
	Purchase ADA Compliant Vehicles and Bus Stop Amenities	Local Funds	20%		24,977				
433685-1-94-01	Formula Grants for the Enhanced Mobility of Seniors & Individual w/Disabilities	FTA 5310	80%			102,903			
	Purchase ADA Compliant Vehicles and Bus Stop Amenities	Local Funds	20%			25,726			
433685-1-94-01	Formula Grants for the Enhanced Mobility of Seniors & Individual w/Disabilities	FTA 5310	80%				105,990		
	Purchase ADA Compliant Vehicles and Bus Stop Amenities	Local Funds	20%				26,498		
433685-1-94-01	Formula Grants for the Enhanced Mobility of Seniors & Individual w/Disabilities	FTA 5310	80%					109,170	
	Purchase ADA Compliant Vehicles and Bus Stop Amenities	Local Funds	20%					27,292	
433685-1-94-01	Formula Grants for the Enhanced Mobility of Seniors & Individual w/Disabilities	FTA 5310	80%						112,445
	Purchase ADA Compliant Vehicles and Bus Stop Amenities	Local Funds	20%						28,111
422250-1-84-01	State Block Grant - FDOT Operating Assistance	FDOT	50%	1,177,731	1,177,191	1,207,623	1,247,492	1,247,492	1,247,493
		Local Funds	50%	1,177,731	1,177,191	1,207,623	1,247,492	1,247,492	1,247,493
	Urban Corridor Improvements	FDOT							
	Service to Outlying Areas								



June 29, 2015

AGENDA ITEM 5 B 6

**FISCAL YEAR (FY) 2017 – FY 2021
TALLAHASSEE INTERNATIONAL AIRPORT
PRIORITY PROJECT LIST (PPL)**

REQUESTED BY: CRTPA Staff

TYPE OF ITEM: Discussion

STATEMENT OF ISSUE

Staff is seeking approval of the Fiscal Year (FY) 2017 – FY 2021 Tallahassee International Airport Priority Project List, included as ***Attachment 1***.

CRTPA COMMITTEE ACTIONS

The CRTPA's two (2) committees (Citizens Multimodal Advisory Committee and Technical Advisory Committee) were scheduled to meet on June 23, 2015. Due to the deadline associated with development and distribution of the CRTPA agenda, any committee recommendations for this and other agenda items will be provided under separate cover prior to the meeting.

RECOMMENDED ACTION

Option 1: Adopt the FY 2017 – FY 2021 Tallahassee International Airport Priority Project List.

HISTORY AND ANALYSIS

Annually, the Capital Region Transportation Planning Agency (CRTPA) provides a listing of projects to the Florida Department of Transportation (FDOT), in priority order, for funding consideration. One of these lists is the Tallahassee International Airport Priority Project List*. Unlike other lists adopted by the CRTPA, the Tallahassee International Airport develops this list. Projects contained on this list are consistent with the Airport's Master Plan adopted in 2009.

*Note: The City of Tallahassee approved a change in the Airport's previous name to the "Tallahassee International Airport" in January 2015.

The Airport PPL provides guidance to the FDOT as the agency proceeds with development of the Annual FDOT Work Program. Ultimately, the projects included within the FDOT Work Program are included in the CRTPA's Transportation Improvement Program (TIP).

An update the Airport Master Plan is scheduled to occur in 2015. Pursuant to Airport staff, the Update will serve as the City of Tallahassee's strategy for the development of the Tallahassee International Airport to satisfy demand in a cost-effective, feasible manner while minimizing environmental and socioeconomic impacts. Furthermore, the overall goal of the Master Plan Update is to provide guidelines for future airport development that will satisfy aviation demand in a cost-effective, feasible manner while addressing aviation, environmental and socioeconomic issues of the community.

PUBLIC INPUT

Public meetings to present the CRTPA's Draft FY 2016 – 2020 Priority Project Lists to the public were held on June 10 & 11, 2015 throughout the CRTPA Region (Monticello, St. Marks, Tallahassee and Quincy). Information regarding the meeting was published in the region's newspapers, placed on the CRTPA's website (www.crtpa.org) and an e-mail message regarding the meeting was sent to the agency's transportation partners.

NOTE: Received public comments are included in Attachment 2 of Agenda Item 5 B 1 ("RMP Roadway Priority Project List").

NEXT STEPS

Subsequent to adoption of the CRTPA FY 2017 – FY 2021 PPLs, the lists will be provided to the FDOT for use as the agency proceeds with development of the Draft FY 2017 – FY 2021 Annual State Work Program.

The Draft Annual State Work Program is currently scheduled to be presented to the CRTPA Board by the FDOT at the October 2015 CRTPA Retreat. Subsequent to release of the Draft State Work Program, CRTPA staff will initiate development of the CRTPA FY 2017 – FY 2021 Transportation Improvement Program (TIP) incorporating those transportation projects in the CRTPA region that have received state and federal funding.

OPTIONS

Option 1: Adopt the FY 2017 – FY 2021 Tallahassee International Airport Priority Project List.
(Recommended)

Option 2: Provide other direction.

ATTACHMENT

Attachment 1: DRAFT FY 2017 – FY 2021 Tallahassee International Airport Priority Project List

Tallahassee International Airport
Priority Project List
Fiscal Year 2017 - Fiscal Year 2021

FDOT		FDOT FIN	JACIP			Current	Future				
Priority	Description	Number	Number	FUNDING	Prior Years	2017	2018	2019	2020	2021	
1	Terminal Rehabilitation Improvements	226781	TLH2	State/FDOT Local/PFC	800,000 800,000	** 400,000	** 400,000	** 400,000	** 400,000		
2	Terminal Rehab Phase II (Life Safety)	Pending	PFL10393	FAA/Entitlement State/FDOT Local/PFC		** 360,000 20,000	** 877,500 48,750				
						** 20,000	** 48,750				
3	Terminal Rehab Phase II (Security Chekpoint)	Pending	PFL10390	FAA/Entitlement State/FDOT Local/PFC		** 360,000 20,000	** 1,017,000 56,500				
						** 20,000	** 56,500				
4	Airport Master Plan & ALP Update	Pending	PFL10396	FAA/Entitlement State/FDOT Local/PFC		** 540,000 30,000					
						** 30,000					
5	South Ramp Reconstruction	Pending	PFL10391	FAA/Entitlement State/FDOT Local/RR&I			** 2,700,000 150,000	** 2,700,000 150,000			
							** 150,000	** 150,000			
6	Marketing and Promotional Study Phase II	416010	PFL9465	State/FDOT Local/RR&I		50,000 50,000	** 100,000	** 100,000	** 100,000	** 100,000	
							** 100,000	** 100,000	** 100,000	** 100,000	
7	Airfield Preservation Phase II	416010	PFL7949	State/FDOT Local/PFC	100,000 100,000	** 100,000	** 100,000	** 100,000	** 100,000	** 100,000	
8	International Port of Entry and Foreign Trade Zone Improvements	226783	3DOT42	State/FDOT Local/Sales Tax						** 2,700,000	
										2,700,000	
9	Airport Access Roadway Realignment	416010	PFL0211	State/FDOT/SIS Local/PFC				** 1,250,000			
								** 1,250,000			
10	Air Carrier Apron Improvements	226774	TLH31	FAA/Entitlement State/FDOT Local/PFC				** 2,025,000 112,500			
								** 112,500			
11	Airfield Lighting and Signage Improvements	Pending	PFL9597	FAA/Entitlement State/FDOT Local/PFC			** 495,000 27,500				
							** 27,500				
12	Airport Security Improvements	226781	PFL3338	FAA/Entitlement State/FDOT Local/PFC			** 675,000 37,500	** 495,000 27,500			
							** 37,500	** 27,500			
13	Security Fence and Gate Rehabilitation, Updates and Improvements	Pending	PFL9466	FAA/Entitlement State/FDOT Local/RR&I				** 900,000 50,000			
								** 50,000			
14	Consolidated Rental Car Facility	Pending	PFL10392	Local/CFC			** 1,600,000	** 15,400,000			
15	Enhancements and Upgrades ATCT	416010	PFL2711	State/FDOT Local/PFC			** 400,000				
							** 400,000				
16	Hangar(s) Development and Modernization	Pending	PFL9812	State/FDOT Local/Sales Tax						** 3,000,000	
										3,000,000	
17	Utility Infrastructure	Pending	Pending	Local/Sales Tax						2,500,000	
18	Aircraft Maintenance and Storage Hanagar and Related Taxilanes	Pending	PFL9601	State/FDOT Local/Private				** 2,500,000	** 5,000,000		
								** 2,500,000	** 5,000,000		
19	Construct Maintenance Hangar	420365	PFL9602	State/FDOT Local/Private			1,250,000 1,250,000				
							** 1,250,000				

Tallahassee International Airport
Priority Project List
Fiscal Year 2017 - Fiscal Year 2021

FDOT		FDOT FIN	JACIP			Current	Future			
Priority	Description	Number	Number	FUNDING	Prior Years	2017	2018	2019	2020	2021
20	Terminal PLB Acquisition and Installation Phase I	422301	PFL9600	State/FDOT		** 400,000		400,000	400,000	** 400,000
				Local/PFC		** 1,600,000	** 400,000	** 400,000	** 400,000	** 400,000
21	Taxiway Improvements	Pending	PFL10604	FAA/Entitlement		** 1,080,000				
				State/FDOT		** 60,000				
				Local/RR&I		** 60,000				
22	ARFF Station Rehab	Pending	PFL10605	FAA/Entitlement		** 900,000				
				State/FDOT		** 50,000				
				Local/RR&I		** 50,000				
23	Parking Area Improvements	Pending	PFL10395	State/FDOT			** 500,000			
				Local/RR&I			** 500,000			
24	Runway 18/36 Overlay	412210	PFL10606	FAA/Discretionary				** 4,500,000	** 4,500,000	** 4,500,000
				State/FDOT					250,000	** 250,000
				Local/RR&I				** 250,000	** 250,000	** 250,000
25	Perimeter Road Rehabilitation and Improvements	226781	TLH7	FAA/Entitlement		** 900,000				
				State/FDOT		* 50,000				
				Local/RR&I		** 50,000				
26	Computerized Maintenance Management System (CMMS)	Pending	Pending	State/FDOT						** 40,000
				Local/RR&I						** 40,000
27	Airport Safety Management System (SMS) Update	Pending	Pending	FAA/Entitlement						** 54,000
				State/FDOT						** 3,000
				Local/RR&I						** 3,000
28	Terminal Concessions Redevelopment	Pending	Pending	State/FDOT						** 125,000
				Local/RR&I						** 125,000
29	Security Computer Based Training Upgrades	Pending	Pending	State/FDOT						** 200,000
				Local/RR&I						** 200,000
* = Project partially funded				Total	1,800,000	2,500,000	17,705,000	32,700,000	17,000,000	20,890,000
** = Project not funded										
				FAA/Entitlement	-	1,260,000	8,644,500	6,120,000	-	54,000
				FAA/Discretionary	-	-	-	-	4,500,000	4,500,000
				State/FDOT	900,000	620,000	3,130,250	4,340,000	6,250,000	6,918,000
				State/FDOT/SIS	-	-	-	1,250,000	-	-
				Local/CFC	-	-	1,600,000	15,400,000	-	-
				Local/PFC	900,000	570,000	2,670,250	2,290,000	900,000	500,000
				Local/RR&I	-	50,000	410,000	800,000	350,000	718,000
				Local/Sales Tax	-	-	-	-	-	8,200,000
				Local/Private	-	-	1,250,000	2,500,000	5,000,000	-
				Total	1,800,000	2,500,000	17,705,000	32,700,000	17,000,000	20,890,000

June 29, 2015



AGENDA ITEM 5 C

CAPITAL CITY TO THE SEA - COASTAL TRAIL PROJECT DEVELOPMENT AND ENVIRONMENT (PD&E) STUDY

REQUESTED BY: CRTPA

TYPE OF ITEM: Discussion/Approval

STATEMENT OF ISSUE

The purpose of this item is to approve the Capital City to the Sea – Coastal Trail Project Development and Environment (PD&E) Study.

CRTPA COMMITTEE ACTIONS

The CRTPA's two (2) committees (Citizens Multimodal Advisory Committee and Technical Advisory Committee) were scheduled to meet on June 23, 2015. Due to the tight deadline associated with distribution of the CRTPA agendas, the committee recommendations for this and other agenda items will be provided under separate cover prior to the meeting.

RECOMMENDED ACTION

Option 1: Approve the Capital City to the Sea – Coastal Trail Project Development and Environment (PD&E) Study.

PREVIOUS AGENDA ITEMS

November 16, 2009 Agenda Item 4E –	Capital City to the Sea Loop
June 18, 2012 Agenda Item 2D –	Capital City to the Sea Trail Local Agency Program (LAP) Agreement Authorization
January 28, 2013 Agenda Item 6A -	Capital City to the Sea Trail Consultant Selection
March 25, 2013 Agenda Item 2G -	Capital City to the Sea Trail Scope and Contract
May 20, 2013 Agenda Item 4B –	Capital City to the Sea Trails Kick-off
September 16, 2013 Agenda Item 5E –	Project Evaluation Criteria and Agency Coordination
November 18, 2014 Agenda Item 5D –	Project Assessment Approval
January 13, 2014 Agenda Item 5B –	Capital City to the Sea Contract Modification
March 10, 2014 Agenda Item 4C –	Capital City to the Sea Master Plan
June 16, 2014 Agenda Item 5F –	Capital City to the Sea Trails US 98 Trail Project Development and Environment (PD&E) Study
May 18, 2015 Agenda Item 5B -	Capital City to the Sea Trails – Coastal Trail Project Development and Environment (PD&E) Study

HISTORY AND ANALYSIS

Background

The development of the Capital City to the Sea Trails efforts began in 2013 with the initiation of the Master Plan which was approved by the CRTPA Board in March of 2014. The Coastal Trail Project Development and Environment (PD&E) Study was the first project to be implemented from the master plan and was initiated in March of 2014. The eastern limits of the PD&E begin at the entrance to St. Marks Wildlife Refuge with the project terminating to the west at Surf Road.

As the PD&E progressed, three distinct segments emerged to pursue while moving forward with the overall PD&E study. These three segments are briefly described below.

St. Marks Refuge to St. Marks Trail

This segment is approximately 2.75 miles in length and will require very little right-of-way to complete. There are portions of the trail that will require a boardwalk to ensure that environmental features are protected from the trail. The PD&E Study is recommending that this portion of the Coastal Trail be constructed on the south side of US 98 exclusively.

St. Marks Trail to US 98/US 319 Intersection (realigned)

At approximately 11.75 miles in length this is the longest segment of the Coastal Trail. This segment does not require the purchase of right-of-way to be constructed. A shared-use boardwalk will be needed in a couple of locations to protect environmental features and the PD&E Study is recommending that the trail be constructed on both the north side and south side of US 98.

US 98/US 319 Intersection (realigned) to Surf Road

The final segment of the Coastal Trail is approximately 9.5 miles in length and will require right-of-way and the construction of shared-use path boardwalk for portions of the trail. The right-of-way requirement may be able to be reduced through variances but that will have to be determined in the design phase. Approximately half of the trail is recommended for the north side and half for the south side of US 98.

Public Meeting

After the approval of the conceptual alignment of the Capital City to the Sea Trail- Coastal Trail at the May 18, 2015 CRTPA Board meeting the Project Team held a public meeting to present the findings of the study and to take comments on the project.

Public Meeting Notification

The Project Team felt that it was important to follow Project Development and Environment (PD&E) public involvement guidelines when it came to notifying the general public and the property owners adjacent to the project.

The notification process included presenting the project to the CRTPA Board and the Wakulla County Board of County Commissioners, sending out notifications to all of the participants that attended the public meetings for the project, and notification of property owners within 300 feet

of the project. The notification was also placed on the CRTPA website, the project website (<http://cc2st.com/>) and the project Facebook page (<https://www.facebook.com/CC2ST?fref=ts>).

Public Meeting Comments

The public meeting was held on June 22, 2015 after the CRTPA agenda was distributed. The comments from the meeting will be distributed by the end of day, Wednesday June 24, 2015. Additionally, hard copies will be made available at the June 29, 2015 CRTPA Board meeting.

NEXT STEPS

PD&E Study

After the CRTPA Board approves the Coastal Trail PD&E Study, the Project Team will submit the document to the Florida Department of Transportation (FDOT).

St. Marks Trail to US98/US319 (realigned)

After the PD&E Study is submitted this segment of the Coastal Trail will be under design and scheduled to begin construction in FY 2016/2017 (between July 1, 2016 and June 30, 2017).

State Infrastructure Bank Loan

CRTPA in partnership with the Florida Department of Transportation (FDOT) submitted a Letter of Interest (LOI) to FDOT Central Office for consideration of a State Infrastructure Bank (SIB) loan. This effort is an attempt to utilize the SIB to consolidate the construction (currently split into four separate projects) of the St. Marks Trail to US98/US319 (realigned) segment of the Coastal Trail into one project. CRTPA staff should know by June 30, 2015 if the project received an invitation to submit an application for a SIB loan.

RECOMMENDED ACTION

Option 1: Approve the Capital City to the Sea – Coastal Trail Project Development and Environment (PD&E) Study.
(Recommended)

Option 2: Provide other Direction

June 29, 2015



AGENDA ITEM 5 D

TECHNICAL ASSISTANCE FOR JEFFERSON COUNTY TRANSPORTATION PLAN UPDATE

REQUESTED BY: CRTPA Staff

TYPE OF ITEM: Consent

STATEMENT OF ISSUE

This item seeks authorization to initiate a Work Order for one of CRTPA's General Planning Consultants (URS Southern) to conduct the Technical Assistance for Jefferson County Transportation Plan Update.

RECOMMENDED ACTION

Option 1: Approve the resolution to authorize the Chair to execute and Executive Director to administer the Work Order and to issue a Notice to Proceed for URS Southern to provide Technical Assistance for Jefferson County Transportation Plan Update.
(*Attachment 1*)

HISTORY AND ANALYSIS

At a CRTPA Board meeting earlier this year during the prioritization for the Connections 2040 Regional Mobility Plan (2040 RMP), the Jefferson County representative (Commissioner Barfield) request assistance from CRTPA staff in formatting and prioritizing their county transportation plan.

The formal development of a county transportation for each county was a 2040 RMP initiative. By each county have an independent transportation plan, they could identify all their transportation needs and priorities. The transportation needs from each county could be folded in the CRTPA 2040 RMP as part of the overall regional needs to be evaluated as part of the prioritization process of the 2040 RMP. The individual county transportation plans would serve a blue print for each county address all their transportation needs rather than relying on the CRTPA RMP to address those needs. In the past, some of the individual county transportation needs and priorities were not captured for

evaluation because they were not mentioned/identified doing the RMP data gathering process. Since CRTPA is not the only source of transportation funding, the individual county transportation plans will hopefully be utilized as a comprehensive plan for each county to address transportation needs.

Jefferson County wishes to have that comprehensive county transportation plan and has requested CRTPA assistance in accomplishing this effort. General Planning Consultant funding is available (\$21,400) to provide the requested assistance.

OPTIONS

Option 1: Approve the resolution to authorize the Chair to execute and Executive Director to administer the Work Order and to issue a Notice to Proceed for URS Southern to provide Technical Assistance for Jefferson County Transportation Plan Update.
(Recommended)

Option 2: Provide other direction.

ATTACHMENTS

Attachment 1: Resolution 2015-06-5D

Attachment 2: Jefferson County Technical Assistance Work Order



CRTPA RESOLUTION 2015-06-5D

A RESOLUTION of the Capital Region Transportation Planning Agency, hereby referred to as the CRTPA, authorizing the Chair to execute and Executive Director to administer a Work Order between the CRTPA and URS Southern, hereby referred to as the URS for services to complete the projects below.

WHEREAS, CRTPA as the designated metropolitan planning organization for Florida's capital region, and in support of its mission, CRTPA desires to use Urban Attributable (SU) funds to contract with a General Planning Consultant or Consultants that will, among other things, maintain required inventory data, support the Bicycle/Pedestrian program, assist in meeting new compliance requirements related to greenhouse gas reduction and air quality, perform small studies and technical assistance, prepare reports and perform graphics development.

WHEREAS, a General Planning Consultant (GPC) Agreement with URS was executed; and

WHEREAS, and URS has agreed to perform the following work under the GPC Agreement:

1. Provide Technical Assistance for Jefferson County Transportation Plan Update.

THEREFORE, BE IT RESOLVED BY THE CRTPA THAT:

1. The CRTPA authorizes the Chair to execute and Executive Director to administer the Work Order and issue a Notice to Proceed to complete the identified project.

DULY PASSED AND ADOPTED THIS 29th DAY OF JUNE 2015

Capital Region Transportation Planning Agency

By: _____
Kristin Dozier, Chair

Attest: _____
Harry D. Reed III,
CRTPA Executive Director

WORK ORDER NUMBER: 7
GPC #: URS 2011-1

Pursuant to the General Planning Consultant Agreement #: URS-2011-1 entered into and by the Capital Region Transportation Planning Agency, herein referred to as the "CRTPA" and URS Corporation, herein referred to as "URS", a determination has been made by the CRTPA, and approved on June 29, 2015 that there is a need for professional services by URS for work as described in the Agreement for the following services:

WORK ORDER TITLE: Technical Assistance for Jefferson County Transportation Plan Update

PROFESSIONAL SERVICES AUTHORIZED:

URS shall perform all the tasks as detailed in Attachment 1 – Scope-of-Services in accordance with the provisions set forth in the General Planning Consultant Agreement #: URS-2011-1. Compensation to URS shall be for the lump sum amount of \$21,400.00.

EFFECTIVE DATE: June 29, 2015

DURATION: 6 months from effective date

URS Corporation

By:

Authorized Signature

David Rae

(Type/Print)

Title:

CRTPA

By:

Authorized Signature

Kristin Dozier

(Type/Print)

Title:

CRTPA Chair

ATTEST:

(Type/Print)

Title:

ATTEST:

(Type/Print)

Title:

Harry Reed

Executive Director



June 29, 2015

AGENDA ITEM 5 E

2014 CRTPA FINANCIAL STATEMENTS

REQUESTED BY: Staff

TYPE OF ITEM: Discussion

STATEMENT OF ISSUE

This item requests the acceptance of the Capital Region Transportation Planning Agency (CRTPA) Financial Statements for the year ending September 30, 2014.

RECOMMENDED ACTION

Option 1: Accept the FY 2014 CRTPA Financial Statements.

HISTORY AND ANALYSIS

The Capital Region Transportation Planning Agency (CRTPA) Financial Statements for the year ended September 30, 2014 has been completed. Included are the opinion of the external auditors related to the statements presented, their management letter, and the auditors' reports on compliance and internal controls. Thomas Howell Ferguson performed the audit for the CRTPA. State law requires that the Financial Statements be completed by June 30, 2014.

OPTIONS

Option 1: Accept the FY 2014 CRTPA Financial Statements.
(Recommended)

Option 2: Provide other direction.

ATTACHMENT

Attachment 1: FY 2014 CRTPA Financial Statements*

* - NOTE: The CAFR was not available at the time of agenda development for inclusion in the printed agenda. However, once available, a link to the document will be provided to members.



June 29, 2015

AGENDA ITEM 5 F

THOMASVILLE ROAD PLANNING STUDY AND WELAUNEE INTERCHANGE UPDATE

REQUESTED BY: FDOT

TYPE OF ITEM: Information

STATEMENT OF ISSUE

Florida Department of Transportation (FDOT) consultant staff along with City of Tallahassee consultant staff will provide an update on a recently initiated FDOT planning study for Thomasville Road addressing congestion and coordination with the Welaunee Interchange development.

HISTORY AND ANALYSIS

As reported at the May 18, 2015 CRTPA Board meeting, a meeting with held May 14th with CRTPA staff, FDOT District 3 staff, District consultant staff, Blueprint 2000 staff, City of Tallahassee ("City") staff and City consultant staff working on the development of the Welaunee Interchange. The objective of the meeting was to discuss a coordinated approach to conducting both planning efforts.

The City in coordination with FDOT, FHWA, Leon County, Blueprint 2000 and the CRTPA will continue to build upon the Project Programming and Concept Development Report completed for the Welaunee Interchange development in January 2014. The City and Blueprint 2000 are moving forward in continued coordination with FDOT with the planning efforts for the Welaunee transportation needs, including the potential Welaunee Boulevard/Interstate-10 (I-10) interchange.

As FDOT continues to evaluate the future needs and improvement opportunities along Thomasville Road in the vicinity of the I-10 interchange, consideration of the impact the Welaunee area development and associated potential transportation improvements will have on the adjacent interchanges and roadways are being considered. City and Blueprint staff, along with their consultant (Kimley-Horn), are coordinating closely with FDOT District Three Environmental Management staff and their consultant (RS&H) to complete planning level traffic forecasts and analyses. The results of these analyses will help the Department, the City of Tallahassee and Blueprint scope and move forward with work efforts that consider the efforts each entity is championing. This coordinated effort is critical to the success of both the Thomasville Road work efforts, as well as the Welaunee work efforts and will be needed to garner future support from FDOT Central office and FHWA staffs.

Currently, the coordinated efforts focus on developing a consolidated future transportation analysis that can be used to support both future work efforts, remain consistent, and define the scope of improvements that are appropriate and warranted given future needs in northeast Tallahassee.

Following this effort, FDOT District 3 staff will move forward with evaluating Thomasville Road in the vicinity of I-10. The City and Blueprint will proceed with efforts associated with Welaunee area infrastructure to ensure continued coordination occurs between the two project teams.



June 29, 2015

AGENDA ITEM 6

EXECUTIVE DIRECTOR'S REPORT

REQUESTED BY: Staff

TYPE OF ITEM: Information

A status report on the activities of the Capital Region Transportation Planning Agency (CRTPA) and other items of interest will be provided.

CRTPA received notice from FDOT that identified candidate resurfacing projects in the CRTPA region that were being considered as possible additions to next year's resurfacing work program for design. A list of those projects under consideration is shown below by county.

- Leon County - **Attachment 1**
 - Magnolia Drive – Apalachee Parkway to 7th Street
 - Wakulla Springs Road – Wakulla County Line to south of US 319 (Crawfordville Hwy)
- Gadsden County - **Attachment 2**
 - US 27 – Shady Rest Road to Leon County Line
- Jefferson County - **Attachment 3**
 - US 19 – US 27 to north of Martin/Fairchild Roads
- Wakulla County - **Attachment 4**
 - US 98 – SR 61 (US 319) to Wakulla River Bridge
 - US 98 – St. Marks River to Jefferson County Line

Reed, Harry

From: Harrell, Kerrie <Kerrie.Harrell@dot.state.fl.us>
Sent: Tuesday, June 16, 2015 4:14 PM
To: Long, Vince; Burke, Katherine; Park, Tony; Reed, Harry; Favors Thompson, Anita; gabriel.menendex@talgov.com; crietow@thearpc.com
Cc: Perdue, Jared; Satter, Ian; Warren, Noelle; Johns, Tommy; Kelsea Patterson; Hunter, Clay; Paulk, Bryant; Golema, Jessica; Seth Gay; Corbitt, Ray; Webb, Alaina; Johnson, Carter; Saggars, Eric
Subject: FDOT - Candidate Resurfacing Projects in Leon County
Attachments: 437751-1 Location Map.pdf; 437365-1 Location Map.pdf

Each year the FDOT reviews resurfacing candidate projects for possible addition to the next year's resurfacing work program for design. In order to assist District Management in the phasing and budgeting of the work program, we conduct field reviews and solicit comments from Local Governments to identify project needs. Local Government coordination is an important part of building the Department's work program.

This e-mail is to notify you of the below-described candidate projects and provide you with the attached location maps for your review and input.

3R CANDIDATE PROJECTS FOR POSSIBLE ADDITION INTO THE FDOT WORK PROGRAM				
County	FPID	Length (miles)	Roadway	Description
Leon	437365-1	1.299	SR 265 (Magnolia Drive)	SR 20 (US 27) Apalachee Parkway to 7th Street
Leon	437751-1	2.789	SR 61 (Wakulla Springs Road)	Wakulla County Line to South of SR 369 (US 319)

Resurfacing, Restoration, and Rehabilitation (3R) work is defined as work undertaken to extend the service life of a highway or to enhance highway safety. Other than resurfacing, typical 3R work includes, minor drainage improvements, minor access management improvements (driveway and median opening modifications), guardrail upgrades, pedestrian feature upgrades to meet ADA compliancy, minor signal work, signing and pavement markings.

Please take some time to review, or assign a representative to review, the project on the list within your local area. **Please understand FDOT budgeting constraints can result in the rejection or deletion of an indicated or requested work improvement.**

Please e-mail your comments to me by **July 3rd**. I can be reached at kerrie.harrell@dot.state.fl.us or toll free at (888) 638-0250, extension 1513.

Please take advantage of this opportunity to provide input. Should you have any questions about the projects, please feel free to contact me.

Thank you in advance for your cooperation.

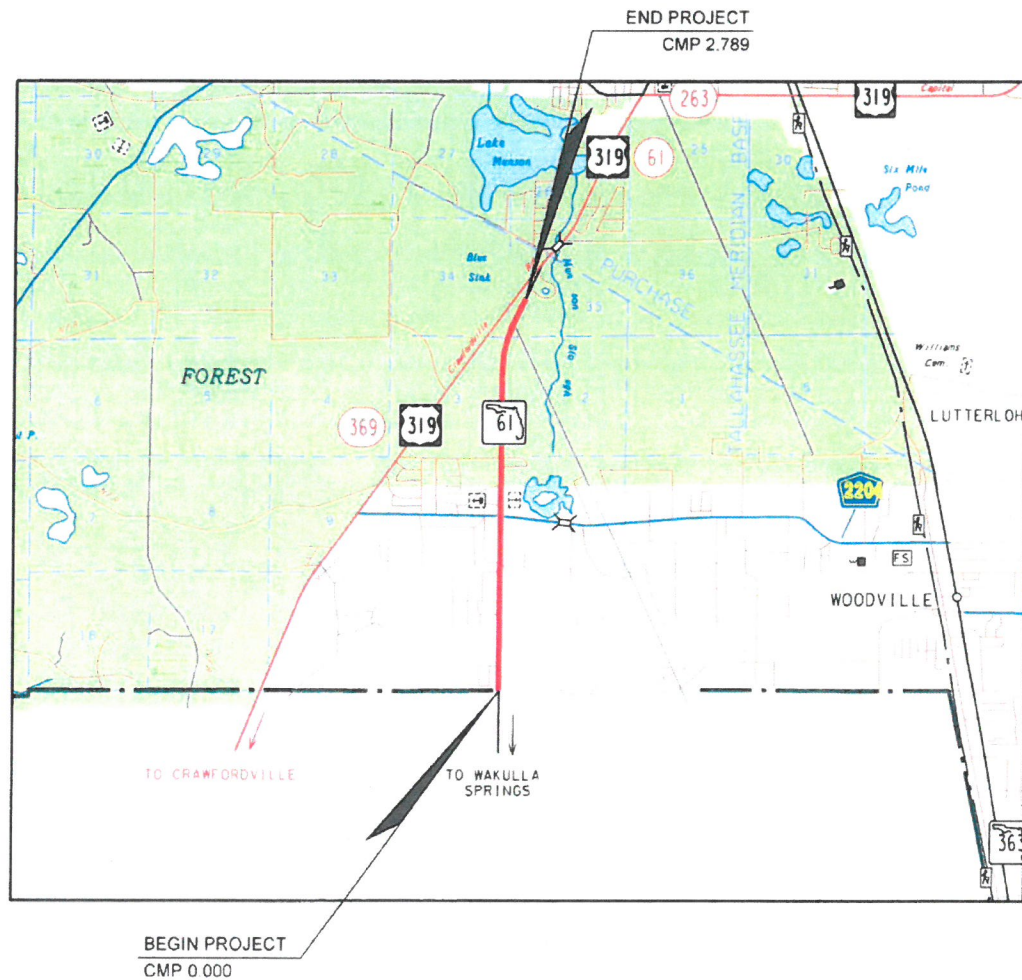
Kerrie Harrell, P.E.
 District Consultant Project Management Engineer
 FDOT District 3
 1074 Hwy 90
 Chipley, FL 32428

Leon County

Resurfacing, Rehabilitation, Restoration, (RRR) Project

SR 61 (US 319/Wakulla Springs Road)
From the Wakulla County Line to South of SR 369 (US 319)

FPID: 437751-1
Section No.: 55120000



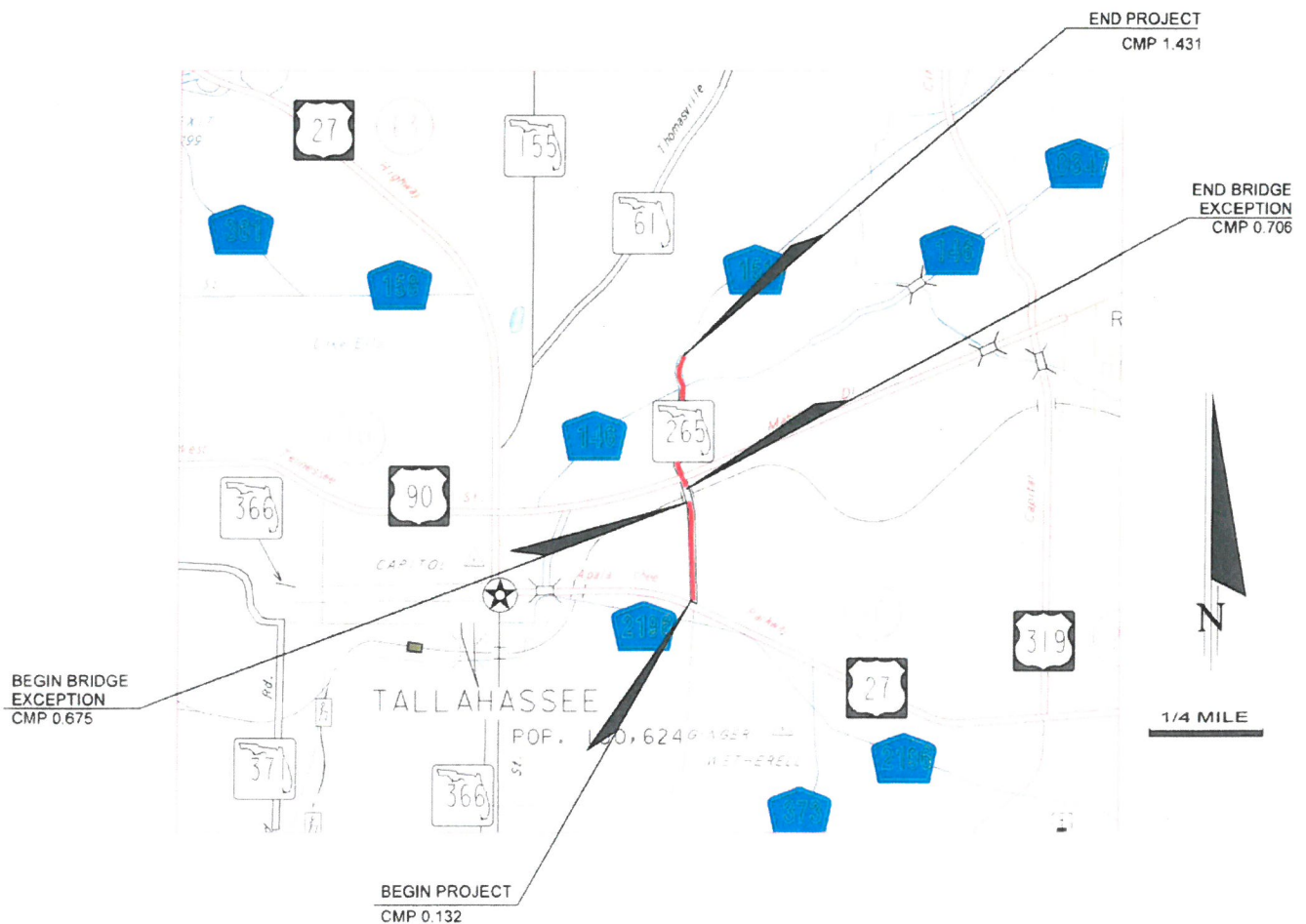
PROJECT LOCATION MAP

Leon County

Resurfacing, Rehabilitation, Restoration (RRR) Project

SR 265 (Magnolia Drive)
From SR 20 (US 27/Apalachee Parkway) to 7th Street

FPID: 437365-1
Section No.: 55005000



PROJECT LOCATION MAP

Reed, Harry

From: Harrell, Kerrie <Kerrie.Harrell@dot.state.fl.us>
Sent: Tuesday, June 16, 2015 3:04 PM
To: Reed, Harry; rpresnell@gadsdencountyfl.gov; publicworks@gadsdencountyfl.gov; fordj@preble-rish.com; crietow@thearpc.com
Cc: Perdue, Jared; Satter, Ian; Warren, Noelle; Johns, Tommy; Kelsea Patterson; Hunter, Clay; Paulk, Bryant; Golema, Jessica; Seth Gay; Corbitt, Ray; Webb, Alaina; Johnson, Carter; Saggars, Eric
Subject: FDOT - Candidate Resurfacing Project in Gadsden County
Attachments: 437745-1 Location Map.pdf

Each year the FDOT reviews resurfacing candidate projects for possible addition to the next year's resurfacing work program for design. In order to assist District Management in the phasing and budgeting of the work program, we conduct field reviews and solicit comments from Local Governments to identify project needs. Local Government coordination is an important part of building the Department's work program.

This e-mail is to notify you of the below-described candidate projects and provide you with the attached location maps for your review and input.

3R CANDIDATE PROJECTS FOR POSSIBLE ADDITION INTO THE FDOT WORK PROGRAM				
County	FPID	Length (miles)	Roadway	Description
Gadsden	437745-1	0.847	SR 63 (US 27)	CR 270 (Shady Rest Road) to the Leon County Line

Resurfacing, Restoration, and Rehabilitation (3R) work is defined as work undertaken to extend the service life of a highway or to enhance highway safety. Other than resurfacing, typical 3R work includes, minor drainage improvements, minor access management improvements (driveway and median opening modifications), guardrail upgrades, pedestrian feature upgrades to meet ADA compliancy, minor signal work, signing and pavement markings.

Please take some time to review, or assign a representative to review, the project on the list within your local area. **Please understand FDOT budgeting constraints can result in the rejection or deletion of an indicated or requested work improvement.**

Please e-mail your comments to me by **July 3rd**. I can be reached at kerrie.harrell@dot.state.fl.us or toll free at (888) 638-0250, extension 1513.

Please take advantage of this opportunity to provide input. Should you have any questions about the projects, please feel free to contact me.

Thank you in advance for your cooperation.

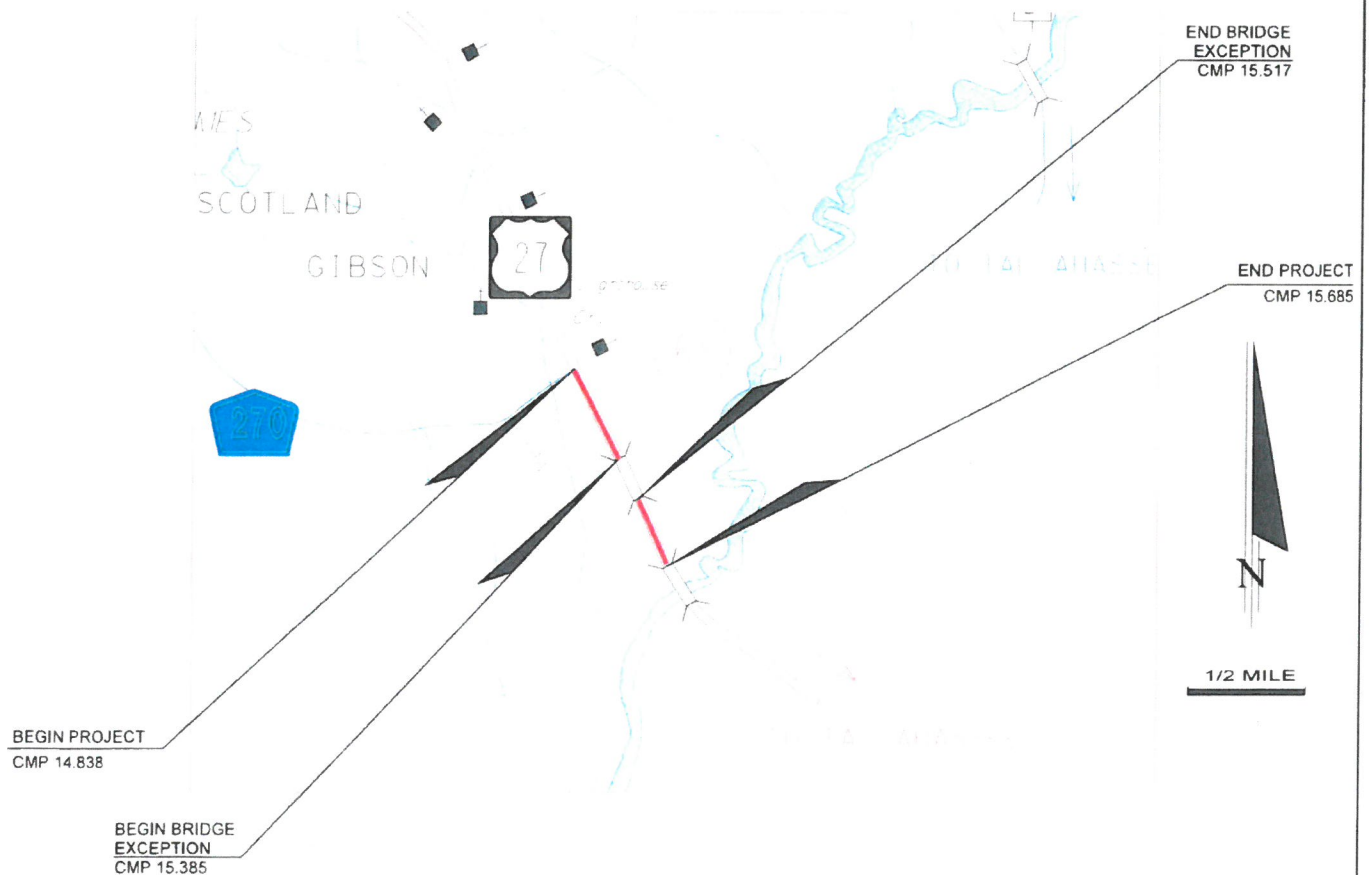
Kerrie Harrell, P.E.
 District Consultant Project Management Engineer
 FDOT District 3
 1074 Hwy 90
 Chipley, FL 32428

Gadsden County

Resurfacing, Rehabilitation, Restoration (RRR) Project

SR 63 (US 27)
From CR 270 (Shady Rest Road) to Leon County Line

FPID: 437745-1
Section No.: 50020000



PROJECT LOCATION MAP

Reed, Harry

From: Harrell, Kerrie <Kerrie.Harrell@dot.state.fl.us>
Sent: Tuesday, June 16, 2015 5:33 PM
To: Reed, Harry; pbarwick@jeffersoncountyfl.gov; crietow@thearpc.com; eanderson@mymonticello.net
Cc: Perdue, Jared; Satter, Ian; Warren, Noelle; Johns, Tommy; Kelsea Patterson; Hunter, Clay; Paulk, Bryant; Golema, Jessica; Seth Gay; Corbitt, Ray; Webb, Alaina; Johnson, Carter; Saggars, Eric
Subject: FDOT - Candidate Resurfacing Project in Jefferson County
Attachments: 437744-1 Location Map.pdf

Each year the FDOT reviews resurfacing candidate projects for possible addition to the next year's resurfacing work program for design. In order to assist District Management in the phasing and budgeting of the work program, we conduct field reviews and solicit comments from Local Governments to identify project needs. Local Government coordination is an important part of building the Department's work program.

This e-mail is to notify you of the below-described candidate project and provide you with the attached location map for your review and input.

3R CANDIDATE PROJECTS FOR POSSIBLE ADDITION INTO THE FDOT WORK PROGRAM				
County	FPID	Length (miles)	Roadway	Description
Jefferson	437744-1	8.811	SR 57 (US 19)	SR 20 (US 27) to North of Martin/Fairchild Roads

Resurfacing, Restoration, and Rehabilitation (3R) work is defined as work undertaken to extend the service life of a highway or to enhance highway safety. Other than resurfacing, typical 3R work includes, minor drainage improvements, minor access management improvements (driveway and median opening modifications), guardrail upgrades, pedestrian feature upgrades to meet ADA compliancy, minor signal work, signing and pavement markings.

Please take some time to review, or assign a representative to review, the project on the list within your local area. **Please understand FDOT budgeting constraints can result in the rejection or deletion of an indicated or requested work improvement.**

Please e-mail your comments to me by **July 3rd**. I can be reached at kerrie.harrell@dot.state.fl.us or toll free at (888) 638-0250, extension 1513.

Please take advantage of this opportunity to provide input. Should you have any questions about the projects, please feel free to contact me.

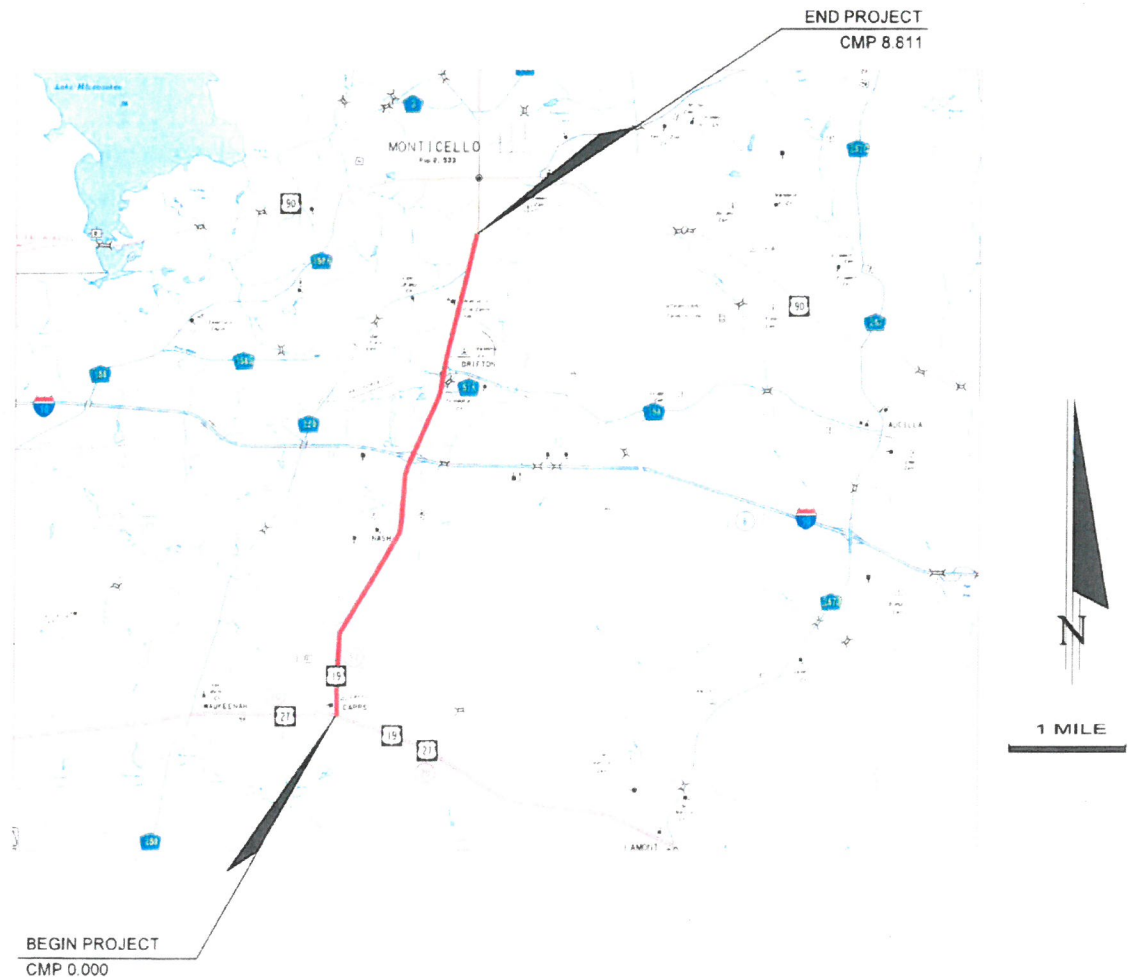
Thank you in advance for your cooperation.

Kerrie Harrell, P.E.
 District Consultant Project Management Engineer
 FDOT District 3
 1074 Hwy 90
 Chipley, FL 32428

Jefferson County
Resurfacing, Rehabilitation, Restoration (RRR) Project

SR 57 (US 19)
From SR 20 (US 27) to North of Martin/Fairchild Roads

FPID: 437744-1
Section No.: 54030000



PROJECT LOCATION MAP

Reed, Harry

From: Harrell, Kerrie <Kerrie.Harrell@dot.state.fl.us>
Sent: Tuesday, June 16, 2015 5:21 PM
To: Reed, Harry; cfleming@esginc.net; dedwards@mywakulla.com; crietow@thearpc.com
Cc: Perdue, Jared; Satter, Ian; Warren, Noelle; Johns, Tommy; Kelsea Patterson; Hunter, Clay; Paulk, Bryant; Golema, Jessica; Seth Gay; Corbitt, Ray; Webb, Alaina; Johnson, Carter; Saggars, Eric
Subject: FDOT - Candidate Resurfacing Projects in Wakulla County
Attachments: 437756-1 Location Map.pdf; 437748-1 Location Map.pdf

Each year the FDOT reviews resurfacing candidate projects for possible addition to the next year's resurfacing work program for design. In order to assist District Management in the phasing and budgeting of the work program, we conduct field reviews and solicit comments from Local Governments to identify project needs. Local Government coordination is an important part of building the Department's work program.

This e-mail is to notify you of the below-described candidate projects and provide you with the attached location maps for your review and input.

3R CANDIDATE PROJECTS FOR POSSIBLE ADDITION INTO THE FDOT WORK PROGRAM				
County	FPID	Length (miles)	Roadway	Description
Wakulla	437766-1	9.600	SR 30 (US 98)	SR 61 to the Wakulla River Bridge
Wakulla	437748-1	6.125	SR 30 (US 98) Coastal Highway	St. Marks River to the Jefferson County Line

Resurfacing, Restoration, and Rehabilitation (3R) work is defined as work undertaken to extend the service life of a highway or to enhance highway safety. Other than resurfacing, typical 3R work includes, minor drainage improvements, minor access management improvements (driveway and median opening modifications), guardrail upgrades, pedestrian feature upgrades to meet ADA compliancy, minor signal work, signing and pavement markings.

Please take some time to review, or assign a representative to review, the projects on the list within your local area. **Please understand FDOT budgeting constraints can result in the rejection or deletion of an indicated or requested work improvement.**

Please e-mail your comments to me by **July 3rd**. I can be reached at kerrie.harrell@dot.state.fl.us or toll free at (888) 638-0250, extension 1513.

Please take advantage of this opportunity to provide input. Should you have any questions about the projects, please feel free to contact me.

Thank you in advance for your cooperation.

Kerrie Harrell, P.E.
 District Consultant Project Management Engineer
 FDOT District 3
 1074 Hwy 90
 Chipley, FL 32428



June 29, 2015

AGENDA ITEM 7

ITEMS FROM MEMBERS

June 29, 2015



AGENDA ITEM 8

CITIZEN COMMENT



June 29, 2015

AGENDA ITEM 9 A

CORRESPONDENCE

REQUESTED BY: CRTPA Staff

TYPE OF ITEM: Information

The following correspondence has been received by the Capital Region Transportation Planning Agency (CRTPA) since its last meeting:

- Email message (and CRTPA response) from citizen to Greg Burke, CRTPA, regarding US 98 and Spring Creek Highway, June 12, 2015.

Burke, Greg

From: Burke, Greg
Sent: Monday, June 15, 2015 8:11 AM
To: 'Susie and Tony'
Cc: Reed, Harry (Harry.Reed@talgov.com)
Subject: RE: Traffic light at Hwy. 98 & Spring Creek Hwy

Ms. Rizzo, thank you for your email message regarding the US 98/Spring Creek Highway intersection. The CRTPA meets with the Florida Department of Transportation (FDOT) District 3 Safety Office every few months to discuss potential safety concerns within the CRTPA region. Our agency will share your concerns regarding this intersection with the FDOT at our next scheduled meeting.

Sincerely,

Greg T. Burke, AICP
Transportation Planner
Capital Region Transportation Planning Agency
408 N. Adams Street, 4th Floor
Tallahassee, FL 32301
850/891.6802 Fax/891.6832
Email: greg.burke@talgov.com
web site: www.crtpa.org

Mailing Address:
300 S. Adams Street, M.S. A-19
Tallahassee, FL 32301

From: Susie and Tony [mailto:tonysusie@yahoo.com]
Sent: Friday, June 12, 2015 2:57 PM
To: Burke, Greg
Cc: Tony and Susie Rizzo
Subject: Traffic light at Hwy. 98 & Spring Creek Hwy

Dear Mr. Burke,

We live just south of Hwy. 98 on Spring Creek Hwy. I have lived here for thirty plus years. During that time I have seen numerous fatal accidents and even more accidents that caused victims a lifetime of disabilities and pain.

Hwy. 98 coming from the east is on a hill. A person doesn't know there is a very busy intersection just over the hill.

Nor do they know that there is a **liquor store (soon to become a bar) on the right side of 98 with a driveway before the intersection.**

And they don't know that there is a **three office building just over the hill on the left that houses a busy veterinary business and a boat repair and sales business.**

AND THEY DONT KNOW about the **convenience store that has a driveway onto Hwy 98 just a few feet before the intersection with Spring Creek Hwy. Same store has a driveway onto Spring Creek Hwy just a few feet before the intersection of hwy 98.**

So many times it is nearly impossible to make a left turn or cross the road at Hwy. 98. This is a very dangerous situation. Made worse during the school year with folks trying to get to work. And the school buses are coming from every direction.

Please put this on your calendar and bring it up at the next meeting. I would also appreciate it if you would copy anyone e from another agency that needs this I do. I am very painfully disabled and rarely leave home. You may email me or call me at ,850_491_5118.

Thank you,
Susie Rizzo

[Sent from Yahoo Mail on Android](#)



June 29, 2015

AGENDA ITEM 9 B

COMMITTEE ACTIONS(CITIZEN'S MULTIMODAL ADVISORY COMMITTEE/TECHNICAL ADVISORY COMMITTEE/TRANSPORTATION DISADVANTAGED COORDINATING BOARD)

REQUESTED BY: CRTPA Staff

TYPE OF ITEM: Information

STATEMENT OF ISSUE

This item provides information to the Capital Region Transportation Planning Agency (CRTPA) on the activities of the Citizens Multimodal Advisory Committee (CMAC), the Technical Advisory Committee (TAC), and the Transportation Disadvantaged Coordinating Boards (TDCBs) for Leon, Wakulla, Jefferson, and Gadsden counties.

CRTPA SUBCOMMITTEE ACTIONS

TAC and CMAC: The CMAC and TAC met on Tuesday, June 23, 2015. The TAC had a quorum present, but the CMAC did not. However, both committees unanimously approved the following items by the members present:

- Minutes of the May 12, 2015 Committee Meetings
- 2015 CRTPA Calendar Revision
- Fiscal Year 2016-2020 Transportation Improvement Program
- Capital City to the Sea Trail - Coastal Trail Project Development (PD&E) and Environmental Study
- Fiscal Year 2017-2021 Priority Project Lists
 - ❖ Regional Mobility Plan Roadway PPL
 - ❖ Regional Mobility Plan Bicycle and Pedestrian PPL
 - ❖ Transportation Systems Management PPL
 - ❖ Strategic Intermodal System PPL
 - ❖ StarMetro PPL
 - ❖ Tallahassee International Airport PPL
- Final Cost Feasible Plans – Connections 2040 Regional Mobility Plan
 - ❖ Roadway Projects
 - ❖ Bicycle and Pedestrian Projects

Additionally, both committees heard a presentation on the Thomasville Road Planning Study from Ms. Lauren Boes, RS&H. The TAC also heard an update on the coordination with the Welaunee and I-10 Interchange Study.

TDCB: The actions of the Transportation Disadvantaged Coordinating Boards in Gadsden, Jefferson, Leon and Wakulla counties are listed below.

Wakulla County

Wakulla County had its Annual Public Hearing and regular quarterly meeting on June 9th at the Senior Services Center in Crawfordville. The board reviewed the Annual Evaluation of the Community Transportation Coordinator (CTC) and the Florida Department of Transportation (FDOT) Drug and Substance Abuse Audit. Both reviews were excellent, and the CTC was found to be without qualification or comment. The board also approved a change in the Grievance Process, which eliminated references to Medicaid Non-Emergency Transportation (MNET) as it was no longer part of the coordinated transportation system. Additionally, meeting dates for 2015-2016 were approved.

Jefferson County

Jefferson County had its Annual Public Hearing and regular quarterly meeting on June 11th at 10 AM in the Commission Annex in Monticello. The board reviewed the Annual Evaluation of the CTC, which was excellent, and the CTC was found to be without qualification or comment. The board also approved a change in the Grievance Process, which eliminated references to Medicaid Non-Emergency Transportation (MNET) as it was no longer part of the coordinated transportation system. Additionally, they approved the meeting dates for 2015-2016 and the CTC presented an updated rate model for board approval.

A special presentation was given on the Road to Recovery Transportation Assistance Program, by Ms. Ashley Marg, Program Manager, Mission Delivery, Florida Division of the American Cancer Society, Inc.

Gadsden County

Gadsden County had its Annual Public Hearing and regular quarterly meeting on June 11th at 2 PM in the Main Branch of the Gadsden County Library. The board reviewed the Annual Evaluation of the CTC, which was excellent, and the CTC was found to be without qualification or comment. The board also approved a change in the Grievance Process, which eliminated references to Medicaid Non-Emergency Transportation (MNET) as it was no longer part of the coordinated transportation system. Additionally, they approved the meeting dates for 2015-2016 and the CTC presented an updated rate model for board approval.

A special presentation was given on the Road to Recovery Transportation Assistance Program, by Ms. Ashley Marg, Program Manager, Mission Delivery, Florida Division of the American Cancer Society, Inc.

Leon County

The Leon County Transportation Disadvantaged Coordinating Board has not met since the last meeting of the CRTPA. Their next meeting is July 22, 2015.



June 29, 2015

AGENDA ITEM 9 C

FUTURE MEETINGS AND AGENDA ITEMS

REQUESTED BY: CRTPA Staff

TYPE OF ITEM: Information

The Capital Region Transportation Planning Agency will meet in the City of Tallahassee Commission Chambers on the following dates of 2015*. The topics of discussion will include the following:

Meeting Date	Major Topic(s)
August 31**	CRTPA Project Updates
September 21	CRTPA Project Updates
October 19	(Retreat 9 am -1 pm)
November 16	Election of Chair/Vice Chair

* - CRTPA Board meetings are scheduled to begin at 1 pm.

** - Note: This meeting is proposed for removal from the CRTPA calendar (see Agenda Item 2C)



June 29, 2015

AGENDA ITEM 9 D

EXPENSE REPORTS

REQUESTED BY: CRTPA Staff

TYPE OF ITEM: Information

The expense reports for April and May are attached.

CITY OF TALLAHASSEE, FLORIDA
Expenses by Department
460000
CRTPA

CRTPA
April 30, 2015

Report Date: 2015-04-30
Fiscal Year: 2015
Run Date: 8-May-15
Run Time: 5:13 PM

Account	Account Description	Expended This Month	Amended Budget	Budget Allotment to Date	Year to Date Expended	Pre-Encumbered	Encumbered	Unencumbered & Unexpended
Personnel Services								
511000	Salaries	19,737	429,189	250,360	190,338	--	--	238,851
511500	Temporary Wages	--	3,000	1,750	--	--	--	3,000
512400	Other Salary Items	--	3,000	1,750	--	--	--	3,000
515000	Pension- Current	2,998	45,136	26,329	22,486	--	--	22,650
515100	Pension- MAP	1,409	17,416	10,159	10,570	--	--	6,846
515500	Social Security	--	11,220	6,545	--	--	--	11,220
515600	Mandatory Medicare	273	6,097	3,557	2,060	--	--	4,037
516000	Health Benefits	2,307	49,705	28,995	15,821	--	--	33,884
516001	Health Benefits-Retirees	861	10,328	6,025	6,025	--	--	4,303
516100	Flex Benefits	629	17,268	10,073	4,715	--	--	12,553
Total Personnel Services		28,214	592,359	345,543	252,014	--	--	340,345
Operating Expenses								
521010	Advertising	--	4,500	2,625	1,495	--	--	3,005
521030	Reproduction	269	12,000	7,000	2,648	--	2,985	6,367
521100	Equipment Repairs	--	225	131	--	--	--	225
521180	Unclassified Contractual Svcs	550	108,407	63,237	20,523	--	63,193	24,691
521190	Computer Software	9,600	20,000	11,667	17,019	--	--	2,981
522080	Telephone	76	1,000	583	360	--	--	640
523020	Food	93	1,200	700	840	--	--	360
523050	Postage	--	750	438	--	--	--	750
523060	Office Supplies	--	4,500	2,625	146	--	--	4,354
523080	Unclassified Supplies	--	4,500	2,625	156	--	--	4,344
524010	Travel & Training	1,171	13,000	7,583	6,615	--	--	6,385
524020	Journals & Books	--	600	350	--	--	--	600
524030	Memberships	--	2,500	1,458	1,547	--	--	953
524050	Rent Expense- Building & Offic	--	12,899	7,524	--	--	--	12,899
Total Operating Expenses		11,759	185,808	108,388	51,349	--	66,178	68,281
Allocated Accounts								
560010	Human Resource Expense	485	5,808	3,388	3,395	--	--	2,413
560020	Accounting Expense	1,678	20,072	11,709	11,749	--	--	8,323
560030	Purchasing Expense	355	4,267	2,489	2,483	--	--	1,784
560040	Information Systems Expense	1,515	18,196	10,614	10,604	--	--	7,592
560070	Revenue Collection	95	1,127	657	664	--	--	463
Total Allocated Accounts		4,128	49,470	28,858	28,895	--	--	20,575
Total Expenses		44,101	827,637	482,788	332,258	--	66,178	429,201
Percentage of Budget				58.33%	40.15%			
Run Date: 6/10/2015								

CITY OF TALLAHASSEE, FLORIDA

Expenses by Department

460000

CRTPA

CRTPA
May 31, 2015

Report Date: 2015-05-31

Fiscal Year: 2015

Run Date: 8-Jun-15

Run Time: 1:27 PM

Account	Account Description	Expended This Month	Amended Budget	Allotment to Date	Year to Date Expended	Pre-Encumbered	Encumbered	Unencumbered & Unexpended
Personnel Services								
511000	Salaries	60,359	429,189	286,126	250,697	--	--	178,492
511500	Temporary Wages	--	3,000	2,000	--	--	--	3,000
512400	Other Salary Items	1,500	3,000	2,000	1,500	--	--	1,500
515000	Pension- Current	9,359	45,136	30,091	31,845	--	--	13,291
515100	Pension- MAP	1,409	17,416	11,611	11,979	--	--	5,437
515500	Social Security	5,572	11,220	7,480	5,572	--	--	5,648
515600	Mandatory Medicare	1,576	6,097	4,065	3,635	--	--	2,462
516000	Health Benefits	11,198	49,705	33,137	27,018	--	--	22,687
516001	Health Benefits-Retirees	861	10,328	6,885	6,885	--	--	3,443
516100	Flex Benefits	3,147	17,268	11,512	7,862	--	--	9,406
Total Personnel Services		94,980	592,359	394,906	346,994	--	--	245,365
Operating Expenses								
521010	Advertising	--	4,500	3,000	1,495	--	--	3,005
521030	Reproduction	1,556	12,000	8,000	4,205	--	2,233	5,562
521100	Equipment Repairs	--	225	150	--	--	--	225
521180	Unclassified Contractual Svcs	7,313	108,407	72,271	27,835	--	56,293	24,278
521190	Computer Software	--	20,000	13,333	17,019	--	--	2,981
522080	Telephone	--	1,000	667	360	--	--	640
523020	Food	--	1,200	800	840	--	--	360
523050	Postage	--	750	500	--	--	--	750
523060	Office Supplies	153	4,500	3,000	299	--	--	4,201
523080	Unclassified Supplies	--	4,500	3,000	156	--	--	4,344
524010	Travel & Training	485	13,000	8,667	7,100	--	--	5,900
524020	Journals & Books	--	600	400	--	--	--	600
524030	Memberships	--	2,500	1,667	1,547	--	--	953
524050	Rent Expense- Building & Office	--	12,899	8,599	12,899	--	--	--
Total Operating Expenses		9,507	186,081	124,054	60,856	--	58,527	66,698
Allocated Accounts								
560010	Human Resource Expense	485	5,808	3,872	3,881	--	--	1,927
560020	Accounting Expense	1,678	20,072	13,381	13,427	--	--	6,645
560030	Purchasing Expense	355	4,267	2,845	2,838	--	--	1,429
560040	Information Systems Expense	1,515	18,196	12,131	12,119	--	--	6,077
560070	Revenue Collection	95	1,127	751	759	--	--	368
Total Allocated Accounts		4,128	49,470	32,980	33,023	--	--	16,447
Total Expenses		108,615	827,910	551,940	440,873	--	58,527	328,510
Percentage of Budget				66.67%	53.25%			