



A Regional GIS For CRTPA

*Lee Hartsfield, GISP
Tallahassee-Leon County GIS
Coordinator*

MISSION

- ❖ Develop a common regional base map.
- ❖ Promote sharing resources.
- ❖ Reduce redundancy of data collection and creation.
- ❖ Provide ongoing maintenance of base map and other data layers.
- ❖ Encourage enterprise information management solutions.
- ❖ Enhance decision making for all stakeholders.

AGENDA

A Brief Discussion On These Topics:

- ❖ Project Objectives
- ❖ Data Collection
- ❖ Developing A Common Picture
- ❖ Challenges
- ❖ Live Demonstration
- ❖ Questions

PROJECT OBJECTIVE

- ❖ To provide a common operational overview of transportation projects for the four participating counties; Gadsden, Jefferson, Leon, and Wakulla, which allows shared cost, access, and control of the GIS platform.

DATA COLLECTION

- ❖ Allow each county to contribute transportation projects and assets for their county.
- ❖ Allow for each to edit transportation projects and assets as needed.
- ❖ Allow for an environment where each county can leverage existing GIS data.
- ❖ Allow for each county to provide ancillary background GIS data as available and or required.

DEVELOPING A COMMON PICTURE

- ❖ Leveraging Existing Data (Leon County)
- ❖ Removing Redundancy
- ❖ Use Of Authoritative Sources
- ❖ Link To Web CRTPA/Leon County

CHALLENGES

- ❖ Information Convergence
- ❖ Common Background (Jefferson County)
- ❖ Developing Data Standards
- ❖ Link To CRTPA Call Box

DEMONSTRATION

In This Demonstration, Topics Covered Are:

- ❖ An Overview Of ArcGIS Online & Visualization
- ❖ ArcGIS Online's Built-In Editing Functionality
- ❖ Analytical Scenarios
- ❖ An Overview Of Community Analyst



QUESTIONS



Thank You

Details Add Edit Basemap

Save Share Print Measure Bookmarks Find address or place

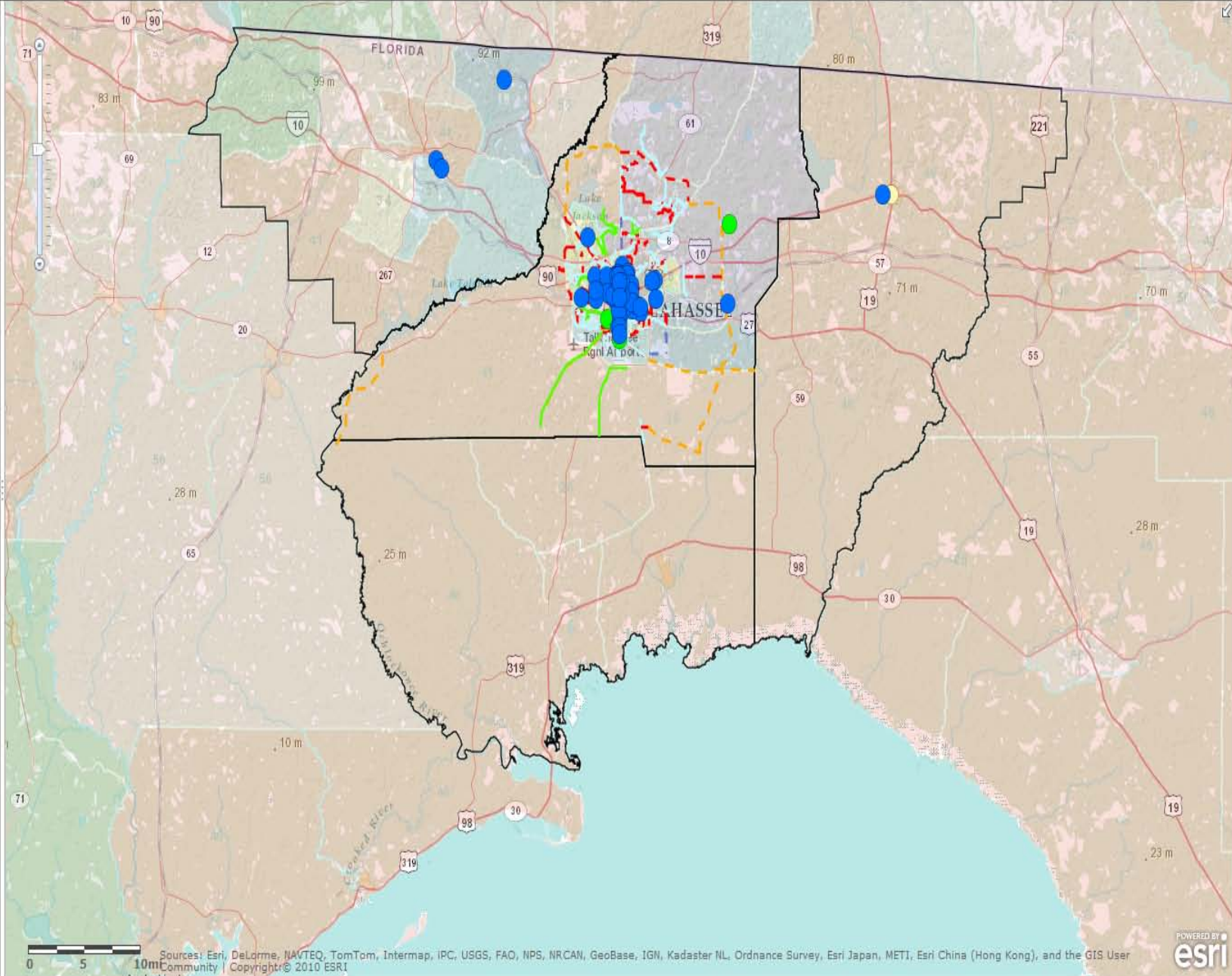
TLCGIS CRTPA Map-Copy

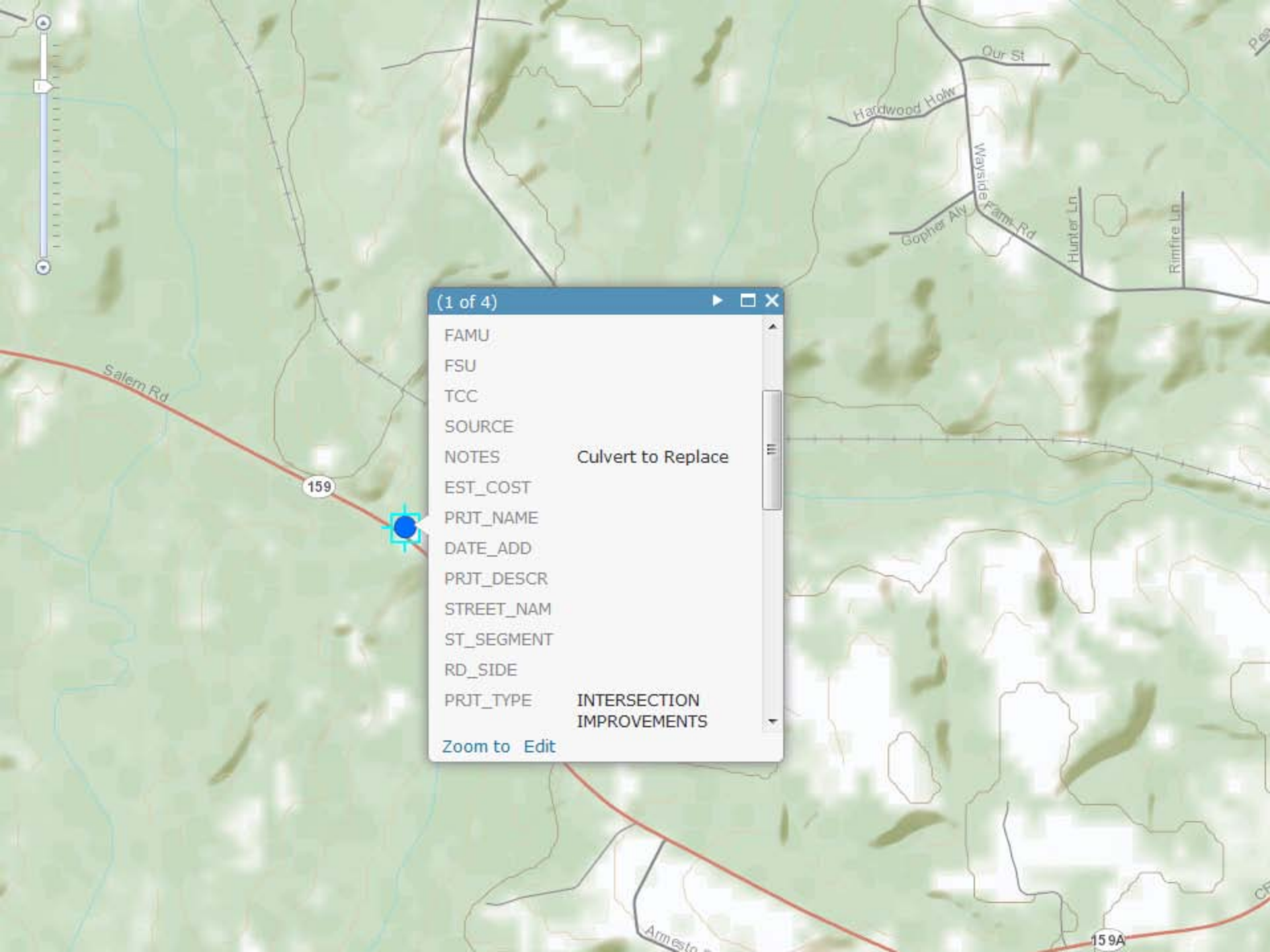
CRTPA Map for TLCGIS
Web Map by guest_Rats
Last Modified: April 10, 2012
0 ratings, 0 comments, 200 views

More Details...

Open this map in:
ArcGIS Explorer Online

Make your own map
Add to this map
Make a new map





(1 of 4) ▶ □ ×

FAMU	
FSU	
TCC	
SOURCE	
NOTES	Culvert to Replace
EST_COST	
PRJT_NAME	
DATE_ADD	
PRJT_DESCR	
STREET_NAM	
ST_SEGMENT	
RD_SIDE	
PRJT_TYPE	INTERSECTION IMPROVEMENTS

[Zoom to](#) [Edit](#)

OTHER CRTPA COUNTIES

LEON COUNTY



Map data not yet available

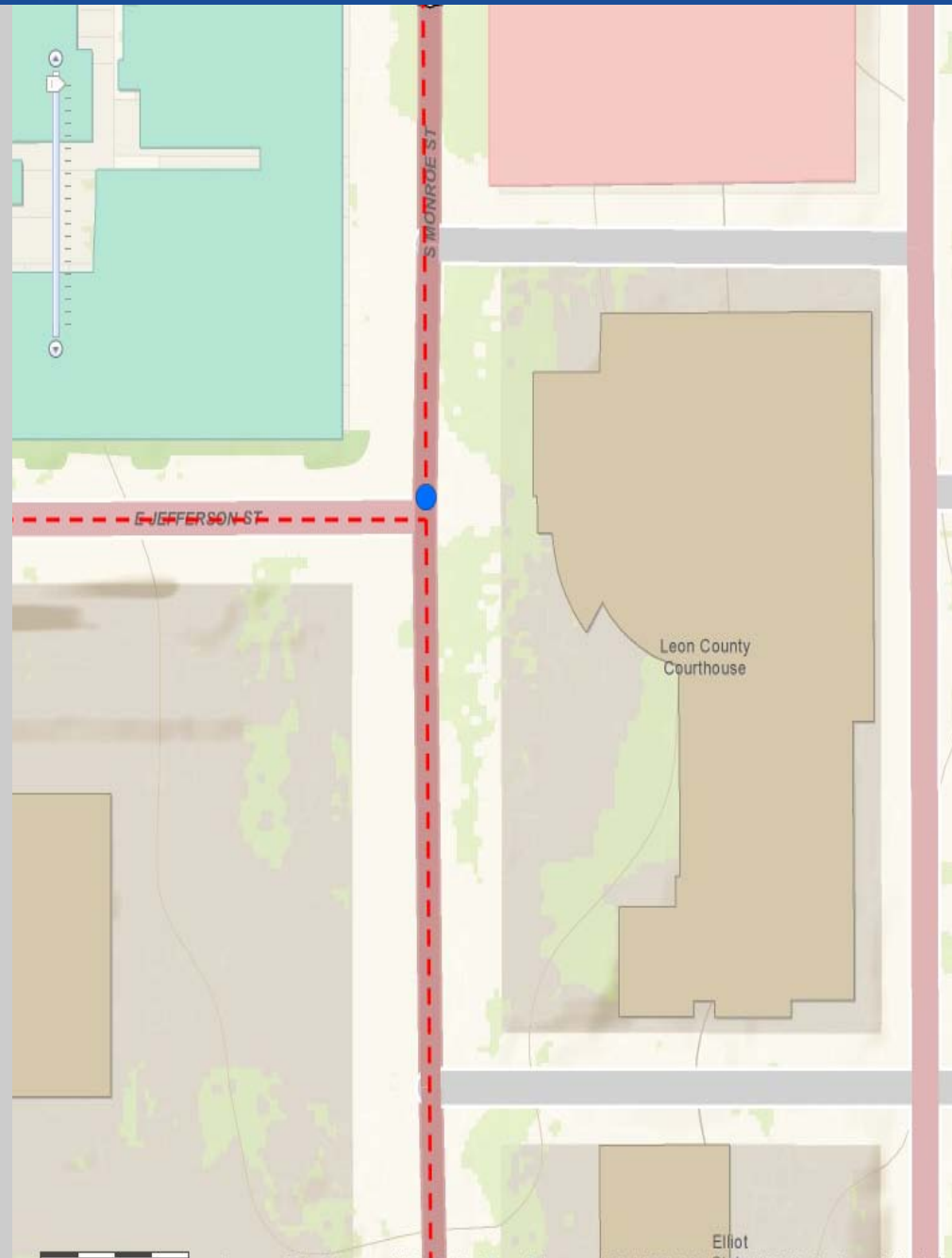
Map data not yet available

Map data not yet available

Map data not yet available

Map data not yet available

Map data not yet available

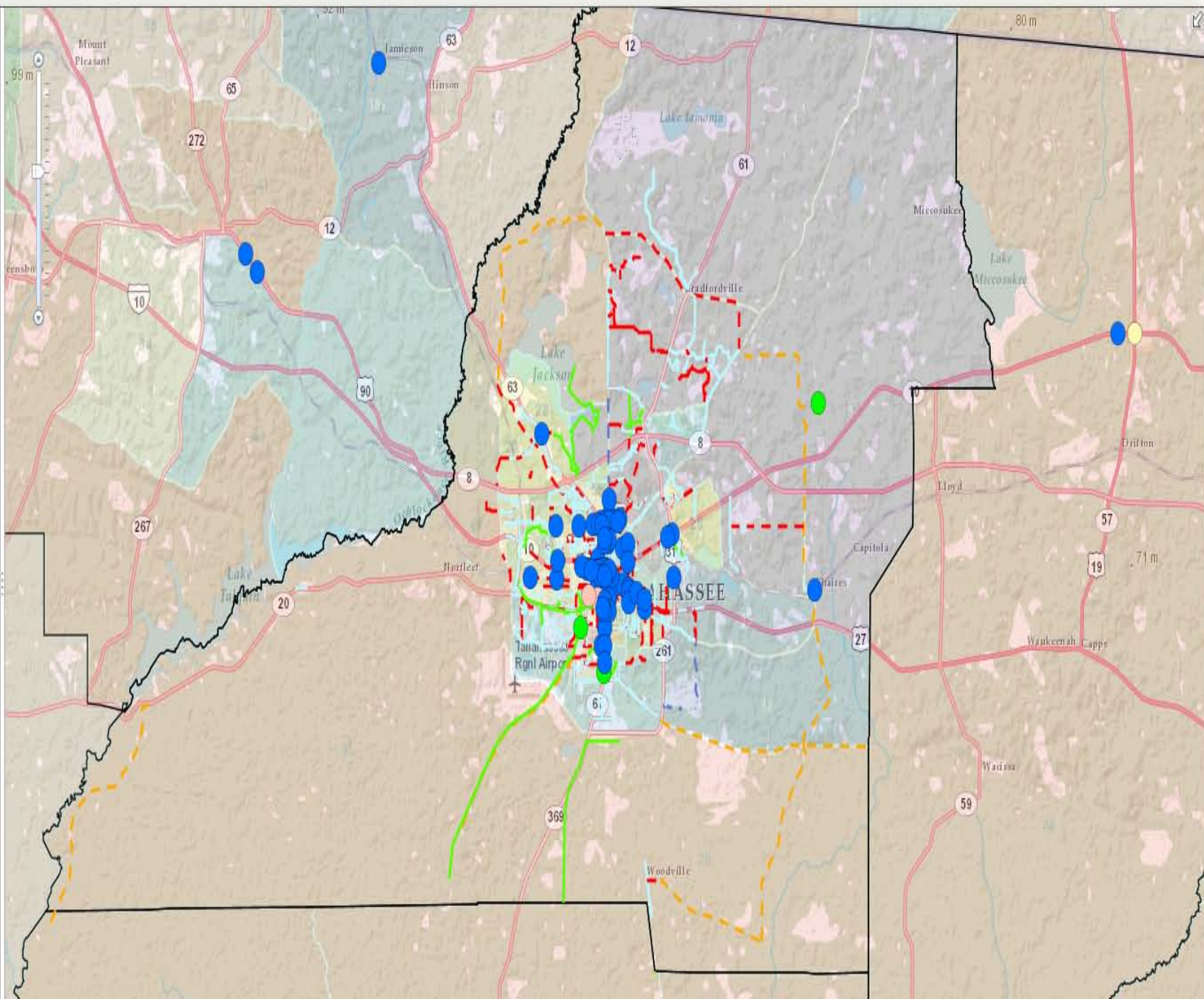


0 50 100ft

Sources: Esri, DeLorme, NAVTEQ, TomTom, Intermap, IPC, USGS, FAO, State, NRCAN, GeoBase, IGN, Kadastre



- Contents**
- TLCGIS - Mobility Locations
 - TLCGIS - Mobility Facilities
 - CTRPACountyArea
 - USA Tapestry Segmentation
 - Topographic



Add Features

Mobility_Locations

- BICYCLE SIGNAL
- PED-OVER/P BRIDGE
- TRAILHEAD
- INTERSECT| IMPROVEME
- PED-SUPPO INTERSECT|
- PED-EMPHA INTERSECT|

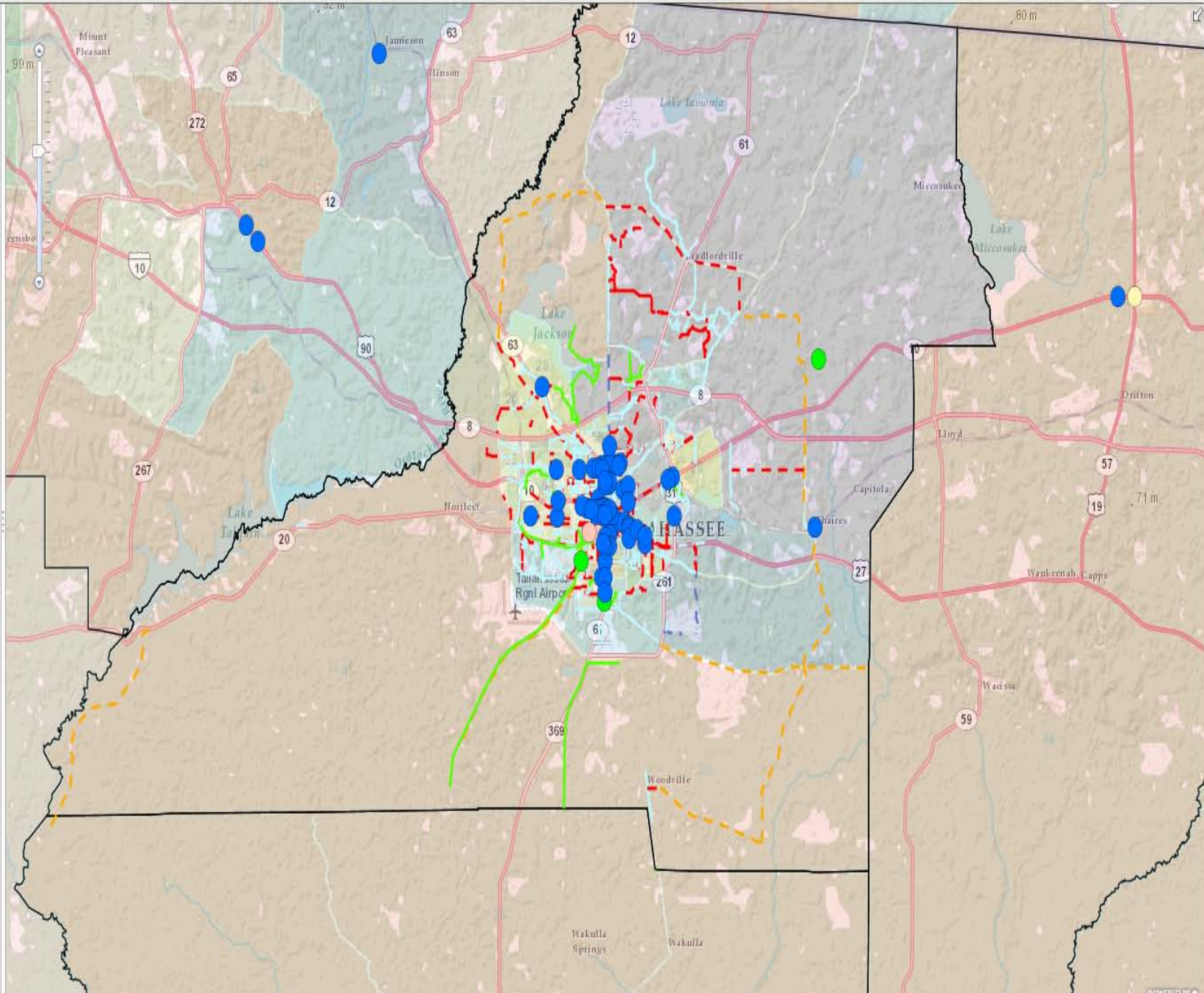
Mobility_Facilities

- SIDEWALK
- - - BICYCLE BLVD
- - - BICYCLE ROUTE
- SHARED-US PATH
- - - BICYCLE BLVD / SIDEWALK
- - - MEDIANS
- - - BICYCLE LANE
- - - ROADWAY
- - - SIDEWALK / BICYCLE LANES

- - - PAVED SHOULDER

CTRPACountyArea

- New Feature



TLCGIS - Mobility_Locations

- BICYCLE SIGNAL
- INTERSECTION IMPROVEMENTS
- PED-EMPHASIS INTERSECTION
- PED-OVERPASS BRIDGE
- PED-SUPPORTIVE INTERSECTION
- TRAILHEAD
- <all other values>

TLCGIS - Mobility_Facilities

- — BICYCLE BLVD
- — BICYCLE BLVD / SIDEWALK
- - - BICYCLE LANE

