



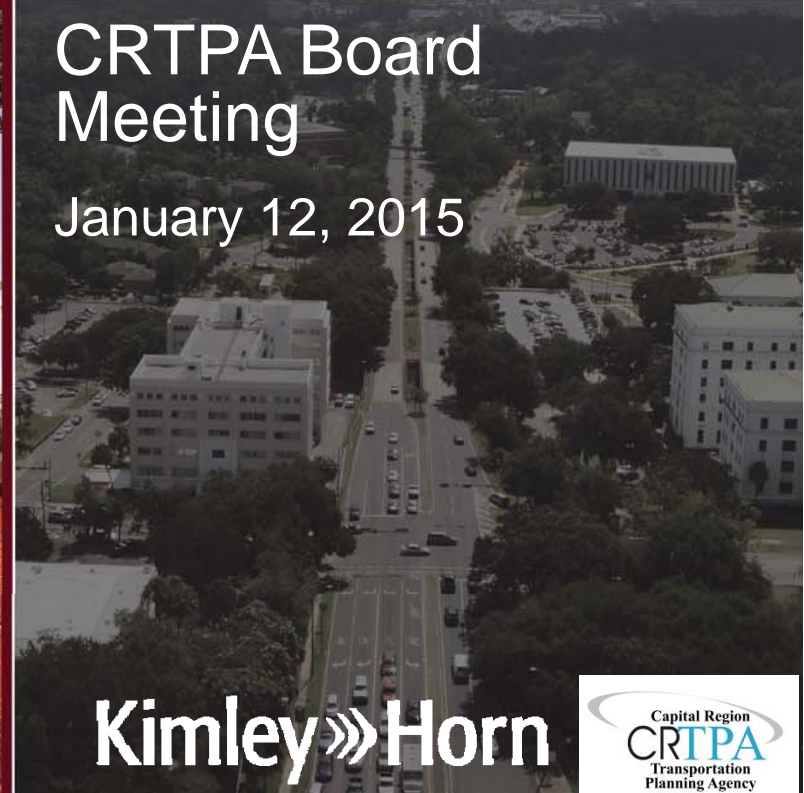
# Connections

regional mobility plan 2040



## CRTPA Board Meeting

January 12, 2015



Kimley»Horn



Connections 2040 RMP

---

# **EVALUATION AND PRIORITIZATION DISCUSSION**

---

# Criteria Development Process



Event	Focus
<b>CRTPA Retreat (April 2014)</b>	2040 RMP Goals (Approved by committees and adopted by CRTPA Board May 2014)
<b>Public Workshops (May 2014)</b>	Community Values
<b>Workshop at Agency for Persons with Disabilities (October 2014)</b>	Accessibility
<b>Public Workshops (October 2014)</b>	Community Preferences
<b>CRTPA Board Retreat (October 2014)</b>	Community Preferences and Prioritization Criteria Discussion
<b>CRTPA TAC and CMAC Committees (November 2014)</b>	Prioritization Criteria
<b>Joint TAC/CMAC Meeting (December 2014)</b>	Draft prioritization criteria and weighting
<b>TAC/CMAC Meetings</b>	Prioritization criteria and weighting

# Planning Tiers

<b>Tier 1</b>	<b>2016 – 2020 (<i>TIP</i>)</b>
<b>Tier 2</b>	<b>2021 – 2025</b>
<b>Tier 3</b>	<b>2026 – 2030</b>
<b>Tier 4</b>	<b>2031 – 2035</b>
<b>Tier 5</b>	<b>2036 – 2040</b>



- **Separate projects and funding by mode**
  - Enables mode-specific prioritization criteria
  - Easier to understand
- **All projects within a given Tier are considered equal priorities**
  - The prioritization process ranks projects by mode
  - Projects are financially constrained by assigning to Tiers
  - Projects within that Tier can be implemented in any order

- **How can project changes be reflected in the RMP?**
  - Prioritization criteria and process can only be modified during the RMP update
  - Projects can be reassessed against prioritization criteria on an annual basis, or as major changes occur
    - Reassessment will only be done for projects with changes in status or conditions
  - Changes in prioritization may result in RMP revision or amendment



- **Bicycle and pedestrian projects are considered differently**
  - Large-scale projects enter the tiered system
    - Determine a ceiling for project cost estimate
  - Smaller-scale projects are funded through a separate box of funds
    - Projects can be moved forward as soon as funding is available
    - Projects are not formally prioritized through the RMP
    - Plan does not have to be revised when a particular project is decided on to advance



- **Roadways**

- Includes widening, new corridors, ITS, and access management
- Includes incidental bicycle and pedestrian improvements
- Includes intersection and interchange improvements

- **Bicycle and Pedestrian**

- Establish a dollar amount for major project cutoff

- **Transit and Aviation**

- Priorities based on agency plans

Project evaluation and prioritization

---

# **PRIORITIZATION CRITERIA**

---

# General Considerations

Prioritization Criteria	Definition
<b>Project Phases Completed</b>	The project has project phases completed
<b>Universal Accessibility Improvement</b>	Project enhances Universal Accessibility by connecting compatible facility types, removing barriers, reconstructing or altering the physical environment, retrofitting existing facilities, or adding enhanced sidewalks, signage and wayfinding, signalization, crosswalk signals, painting, lighting, street furniture, shaded areas, bus stops, technology enhancements or other accessories to improve comfort and safety
<b>Part of an Adopted Plan</b>	Project exists in a currently adopted municipal, county, regional, or state plan
<b>Growth Center/Economic Development Area</b>	Project is located in or adjacent to a growth area (contained within the Quality Growth Plus scenario, or designated as an economic development/growth area in local plans)

# General Considerations

Prioritization Criteria	Definition
<b>Natural Environment</b>	Project has limited impacts to sensitive natural environmental features
<b>Social Environment</b>	Project provides positive contributions to designated revitalization areas and Title VI communities
<b>Identified Gateway</b>	Project is located in or adjacent to an area designated as a future gateway improvement location, as identified in an adopted plan

# Bicycle/Pedestrian >\$300k

Prioritization Criteria	Definition
<b>Safety Improvement</b>	Project includes location(s) that have been identified as safety concerns for cyclists, pedestrians, or differently-abled individuals
<b>Serves Community Activity Centers or Transit</b>	Project provides connections to civic uses such as libraries, schools, parks/nature trails, performing arts centers, fairgrounds, recreational facilities, museums, etc.
<b>Connects to Existing/Planned Facilities</b>	Project increases connectivity for compatible facility types by connecting to or filling in gaps within the non-motorized network
<b>Expansion of Network Area</b>	Project increases service area and multimodal options in previously underserved areas

# Roadway

Prioritization Criteria	Definition
<b>Safety Improvement</b>	Project addresses one of the worst crash locations in the region, as identified in the Existing Conditions report or Congestion Management Plan
<b>Supportive of Bicycle and Pedestrian Mobility and Accessibility</b>	Project includes incidental bicycle or pedestrian improvements
<b>Improves Conditions for a Congested Corridor or Area Identified in the Congestion Management Plan</b>	Project leads to a network reduction of VMT, a reduction in travel time, improved Level of Service, or other measurable benefit to a congested corridor or area identified in the Congestion Management Plan for either existing or future conditions

# Roadway

Prioritization Criteria	Definition
<b>Supportive of Transit Priorities and Accessibility</b>	Project serves or improves transit routes, transit stops, transit technology, transit development, or paratransit
<b>Supportive of Freight Priorities</b>	Project travels along an identified freight route, or provides access to an existing or proposed intermodal facility
<b>Evacuation Route</b>	Project is part of or directly serves an identified evacuation route, as identified on State Emergency Response Team (SERT) evacuation route maps

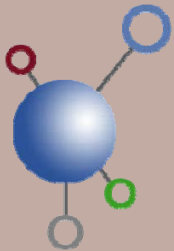


# Discussion Topic

Prioritization Criteria	Definition
<b>Funding Commitment</b>	Project has dedicated local funding contribution or funding partnership

# Next Steps

- **Develop Needs Plan**
  - Evaluate projects against prioritization criteria
  - Run travel demand model
  
- **Create Cost Feasible Plan**
  - Assign projects into funding Tiers



[www.Connections2040RMP.com](http://www.Connections2040RMP.com)

[www.Facebook.com/Connections2040](http://www.Facebook.com/Connections2040)

