

Thomasville Road Multi-Use Path Public Engagement Opportunities

The following are opportunities to provide input on this project:

Scan here to
access [CRTPA.org](https://crtpa.org)!



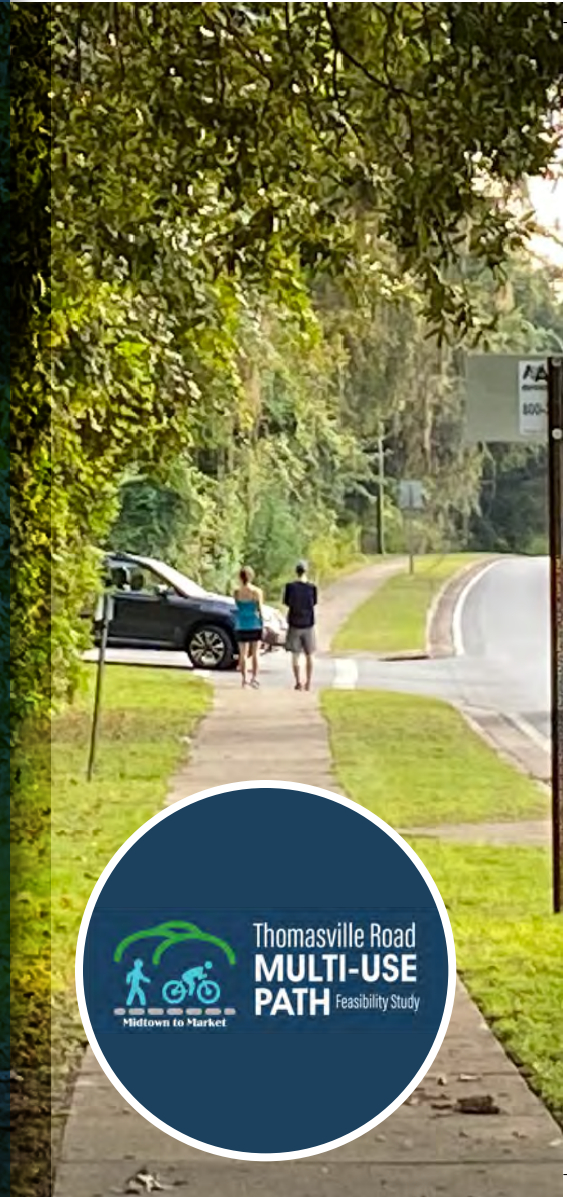
- **VIRTUAL ROOM:** Project virtual room with background information on this project. Open through Tuesday, **May 25th**.

Accessible via [CRTPA.org](https://crtpa.org) or the following link:
<https://extsites.kimley-horn.com/projects/ThomasvilleRoad/>

- **LIVE Q&A SESSION:** Monday, **May 24th at 6:00 PM**. Link to join this meeting will be available at [CRTPA.org](https://crtpa.org)



Public Participation is solicited without regard to race, color, national origin, age, sex, religion, disability, income, or family status. Persons wishing to express concerns about Title VI may do so by contacting: **Capital Region Transportation Planning Agency (CRTPA), Jack Kostrzewa at John.Kostrzewa@crtpa.org or 850.891.8625**



What is the Thomasville Road Multi-Use Path Project?

The Thomasville Road Multi-Use Path Feasibility Study is being conducted by the Capital Region Transportation Planning Agency (CRTPA) to determine the feasibility of constructing a paved 10 to 12-foot multi-use path along Thomasville Road between Betton Road and Metropolitan Boulevard. Additionally, connecting this area north to the Market District, by means of a multi-use path, is also being included in this study.

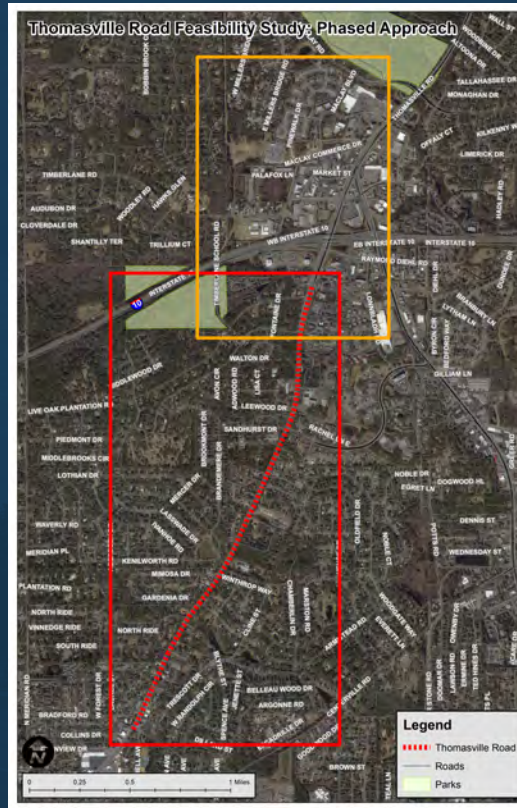
Questions?

For additional information, please contact the CRTPA or access the project website via the links on this page:

Jack Kostrzewa

✉ John.Kostrzewa@CRTPA.org

☎ 850.891.8625



Learn more about the project at the following links:

f www.facebook.com/TvilleRoadMUP

CRTPA Project Page:

