



TALLAHASSEE-LEON COUNTY **Bicycle and Pedestrian Master Plan**

2019 Update



How We Got Here

- The previous Master Plan (2004) focused on routes for strong and fearless bicyclists
- This Master Plan (2019) took the approach of developing routes for all user types

Project Goals

*Improve safety for
pedestrians and cyclists*

*Make walking and
biking predictable and
more convenient in
Tallahassee and Leon
County*





Types of Cyclists



Strong and Fearless

Cyclists who will ride along a corridor regardless of the conditions. These users have no problem sharing the lane with a vehicle traveling at speeds greater than 40 mph.



Interested but Concerned

Cyclists who would like to ride their bike but have fears which are usually caused by vehicles. This type of cyclist needs low speeds, low volumes, and a separated facility such as a buffered bike lane.



Enthusied and Confident

Cyclists who feel comfortable riding along a corridor next to vehicles at lower speeds and with facilities such as a bike lane or signage.



Children/Elderly

Needs a facility completely separated from the roadway such as a multiuse trail.

*Approximately 50% of the participants identified themselves as either **interested/concerned** or **children/elderly**. Close to another 40% identified themselves as **enthusied and confident**.*



Bicycle Comfort Level (BCL)

- Data driven analysis:
 - Traffic Volumes
 - Number of Lanes
 - Speed
 - Existing Bicycle Facilities
- Related the results of this analysis back to the types of cyclists who would ride on each road based on existing conditions
- Mapped roadway grade in relation to Bicycle Comfort Level to determine “ideal” roadways





Relationship Between Cyclist Type and BCL

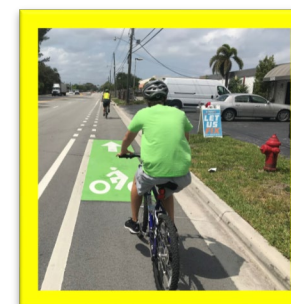
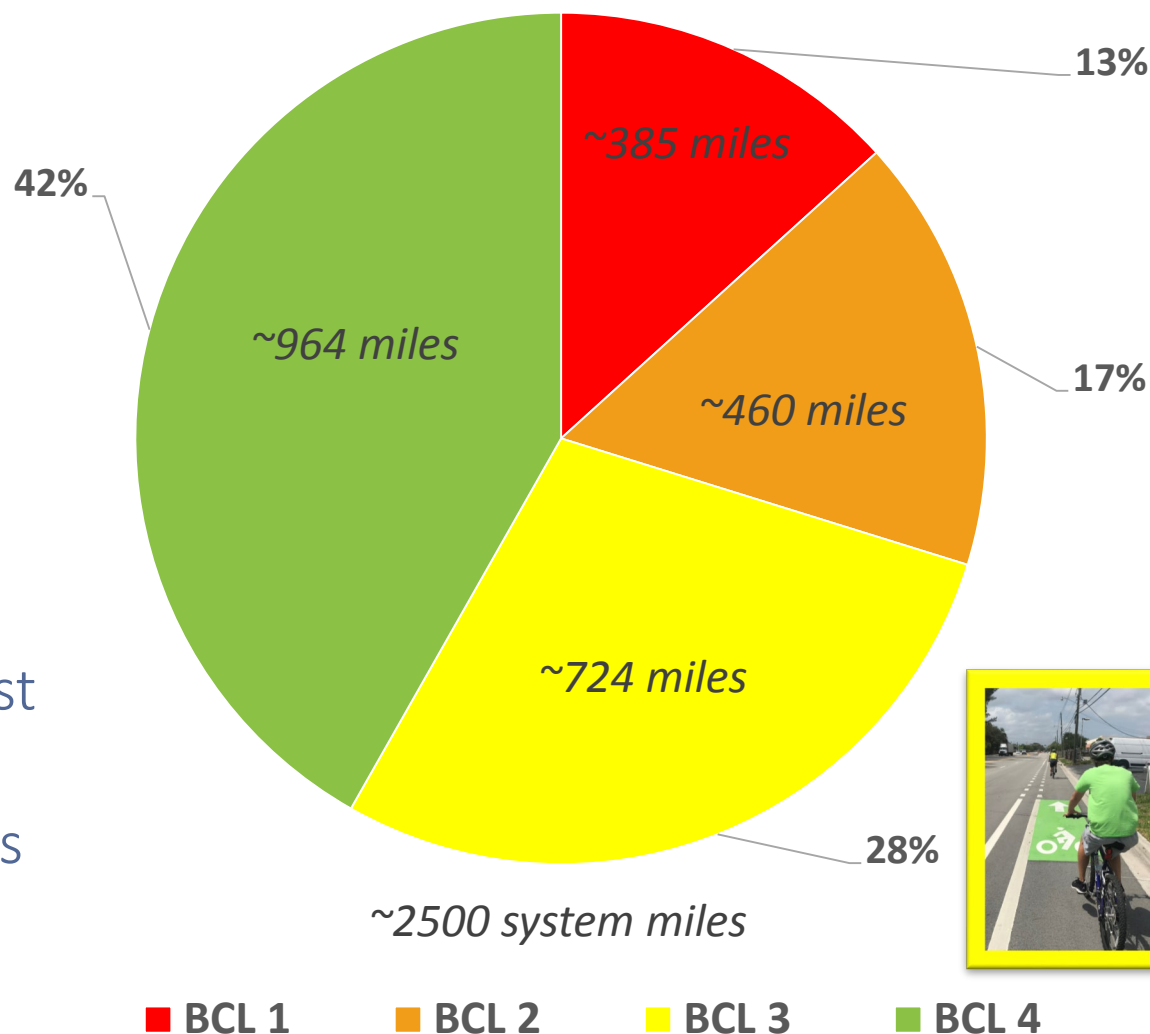
Type of Cyclist	Bicycle Comfort Level (BCL)
Children/Elderly	BCL 4
Interested but Concerned	BCL 3 and 4
Enthused and Confident	BCL 2, 3, and 4
Strong and Fearless	BCL 1, 2, 3, and 4



Relationship Between BCL and Roads in Leon County



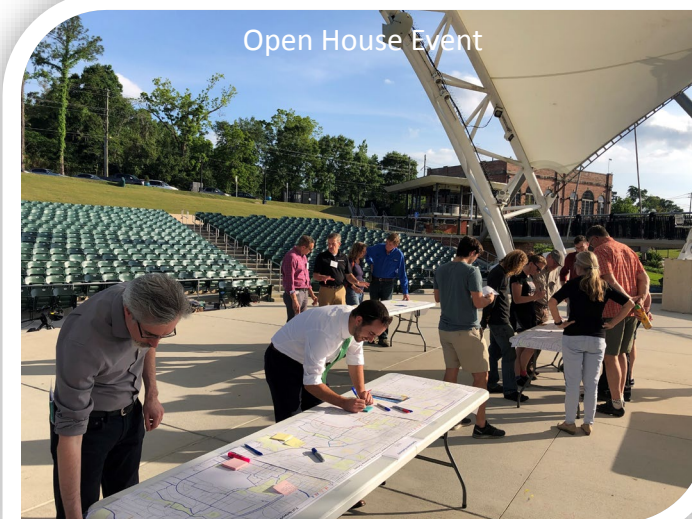
- Close to 75% of our roads are considered BCL 3 or >
- Unfortunately, those roads with BCL 2 or < are the most connected within our community and are barriers to our higher BCL roads





Stakeholder and Public Outreach

- Stakeholder Meetings
 - Blueprint and Tallahassee-Leon County Planning Department
 - City and County Bike Work Group
 - Local cyclists in our community
 - Florida State University
- Five Focus Area Public Meetings
- One Open House at Cascades Park Amphitheater



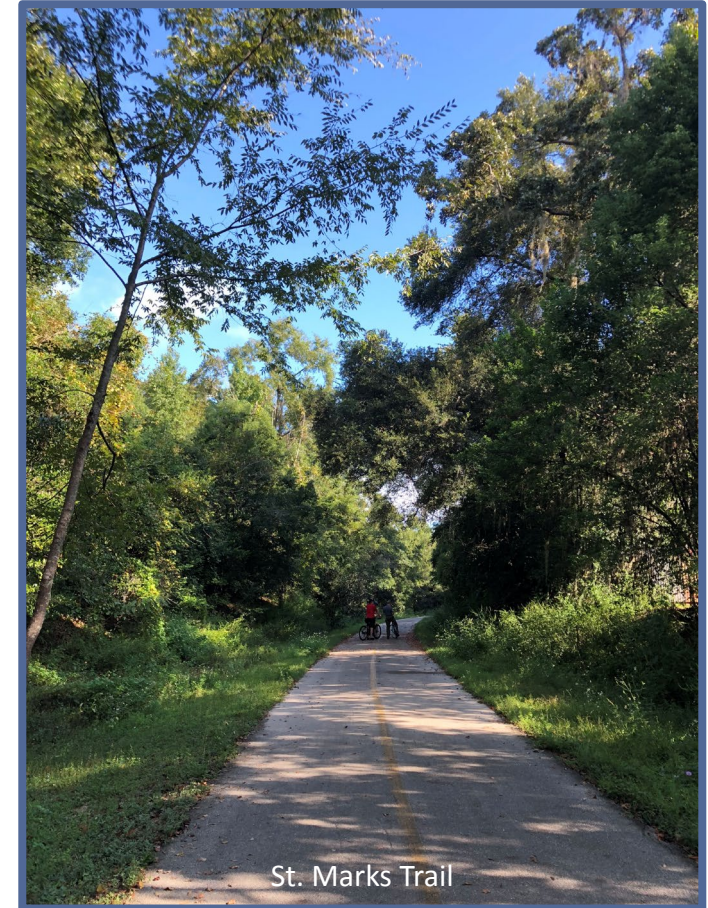


Types of Recommendations

- Sidewalks
- Neighborhood Network and Minor Projects
- Major Projects
- Big Ideas



Hillcrest Street

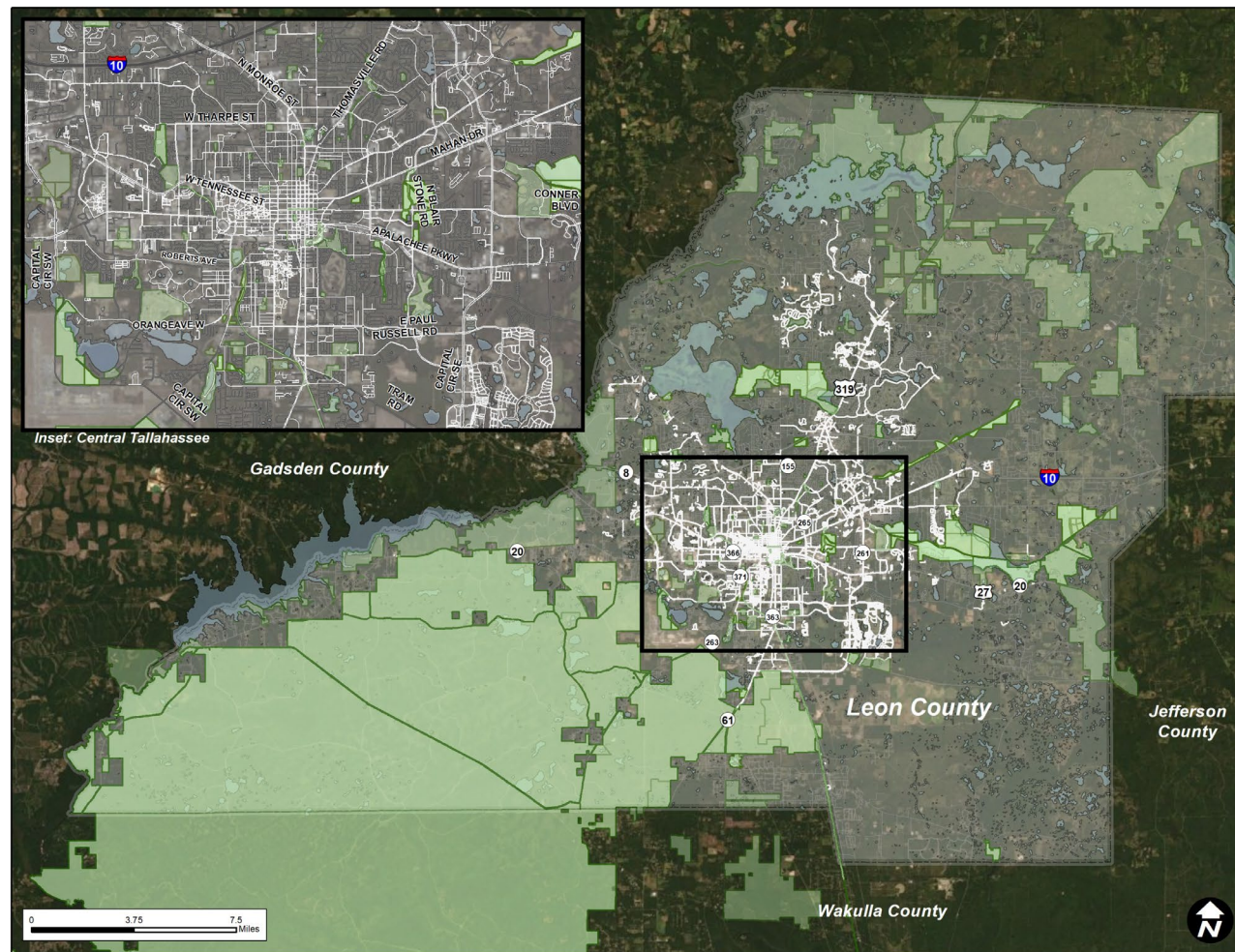


St. Marks Trail



Sidewalk Recommendations

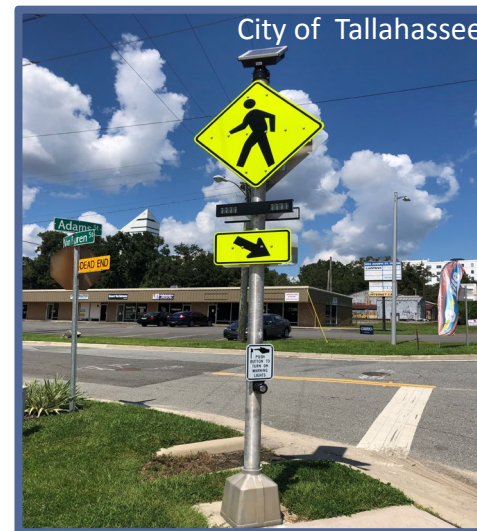
- Extensive network of sidewalks exist within the City
- City and County have a priority list of sidewalk projects for implementation out for several years
- Major recommendation focus on shared-use paths where existing sidewalk facilities are insufficient
 - Thomasville Road
 - Oak Ridge Road
 - Maclay Road





Neighborhood Network

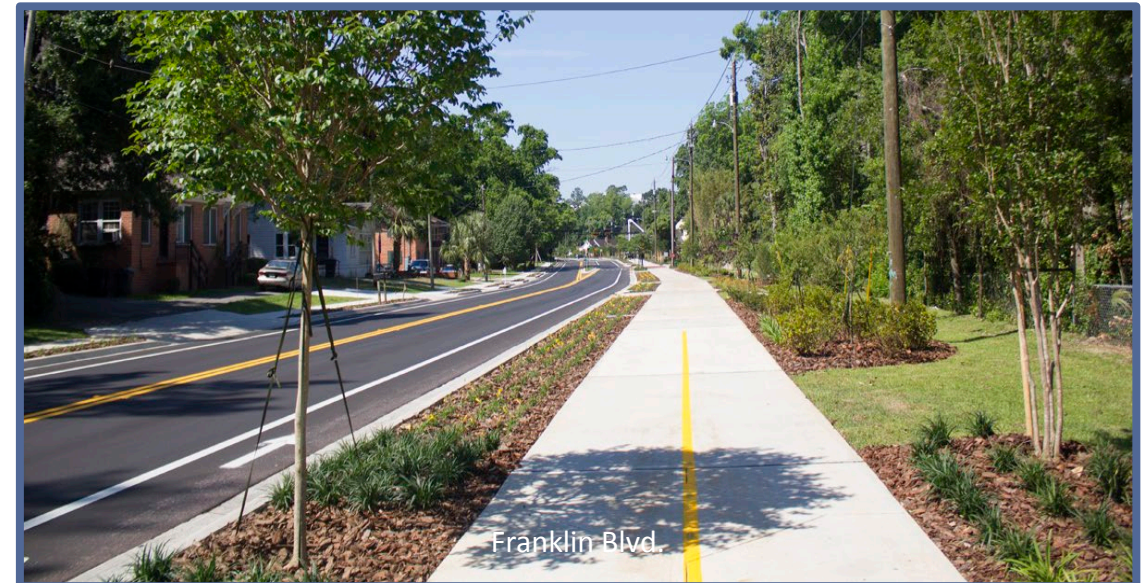
- Utilizes slow speed, slow volume roads, usually throughout neighborhoods
- Many of the routes identified as part of the neighborhood network include minor projects such intersection improvements





Major Projects

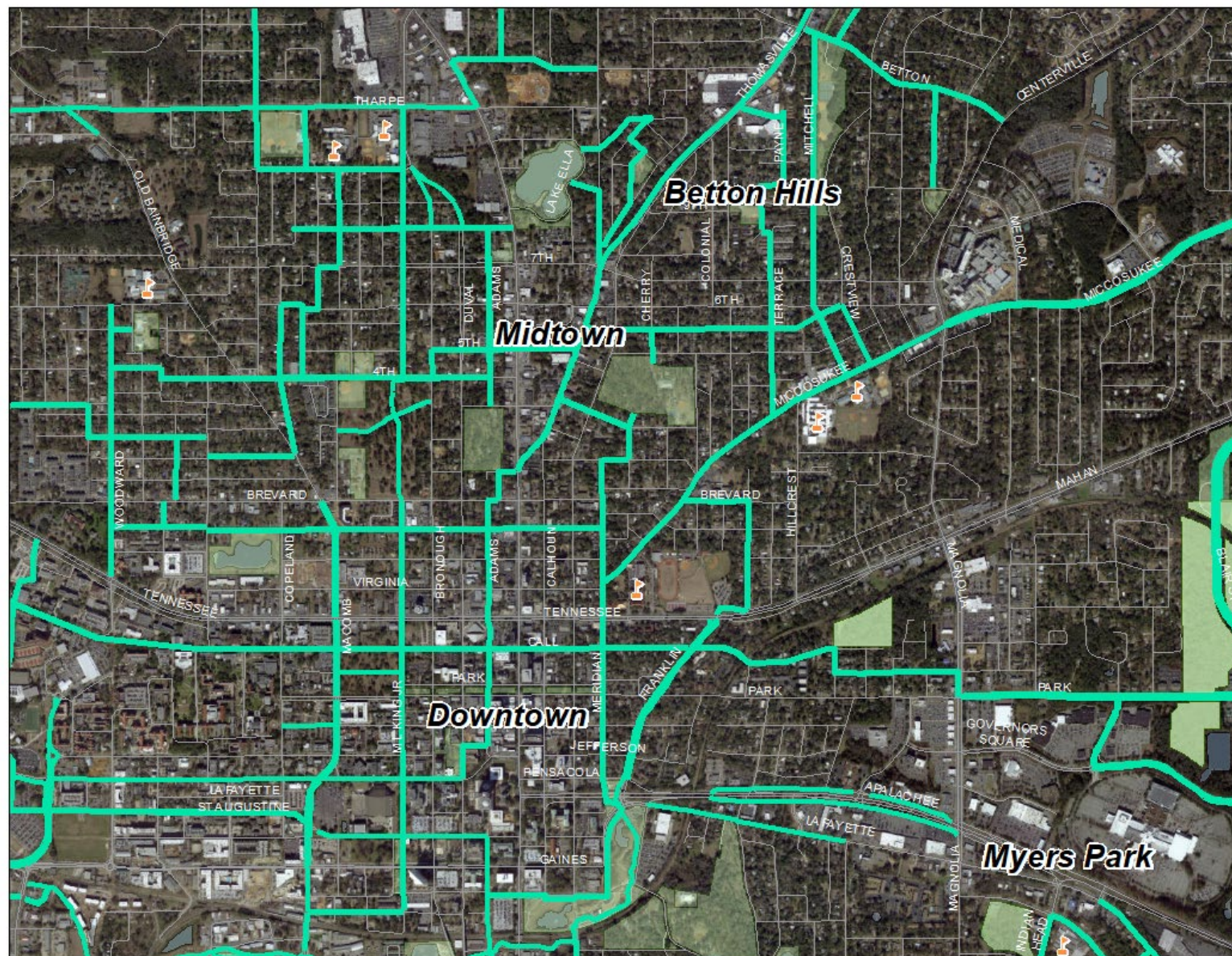
- Large infrastructure projects to expand the network such as shared-use paths along high speed, high volume roads
- Key west/east & north/south connections
 - Compliments the existing Leon County Bike Network and Greenways Master Plan
- Remove barriers





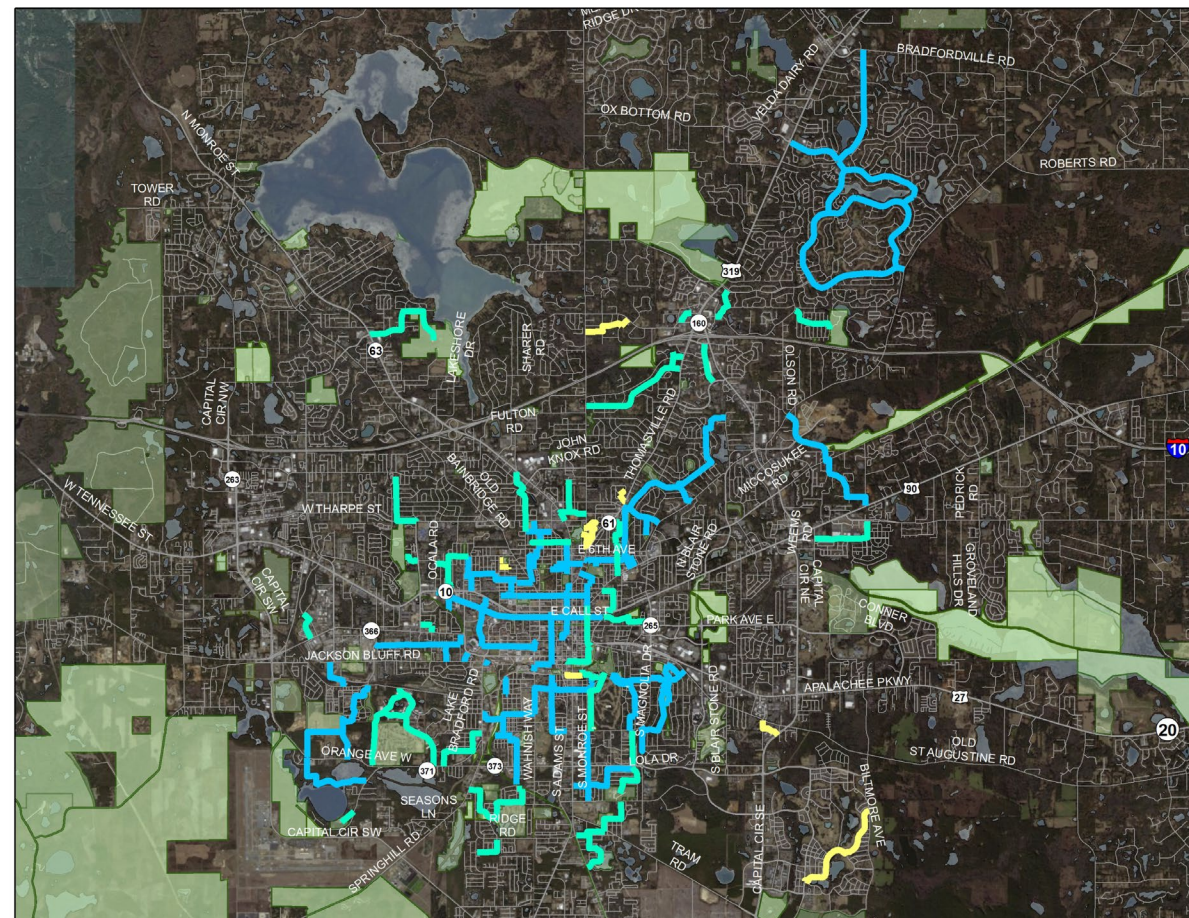
Overall System

1. Existing Facilities
2. Neighborhood Network
3. Major Projects
4. Full Build-Out





Neighborhood Network Tier	Median Cost with 20% Contingency
Tier 1	\$3,179,728.67
Tier 2	\$1,786,215.66
Tier 3	\$450,746.92
Total	\$5,416,791.26





Major Project Tier	Median Cost with 20% Contingency*
Tier 1	\$18,145,440.00
Tier 2	\$20,197,987.92
Tier 3	\$17,159,238.56
Total	\$55,872,666.48



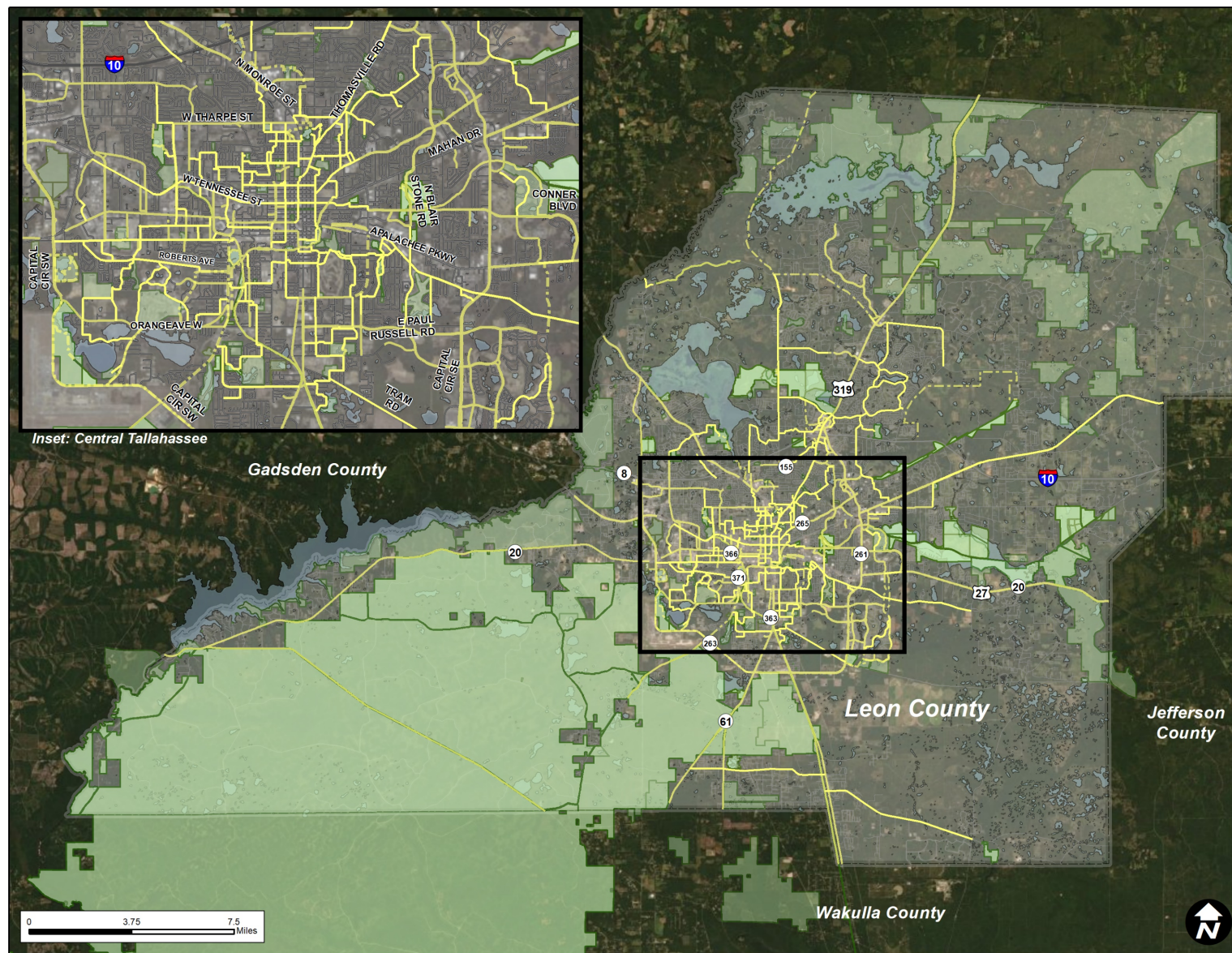
Ongoing and Committed Projects

- Airport Gateway
- Magnolia Drive
- Market District Connectivity
- Capital Cascades Segment 4
- Capital Circle, Southwest
- Debbie Lightsey Nature Trail
- Golden Aster Spur Trail (CCSW Greenway)
- Lake Jackson Greenway
- Lake Jackson South Greenway
- Meridian Greenway
- Northeast Corridor Connector: Bannerman Road
- Southwood Greenway
- Timberlane Greenway
- Tram Road
- Weems Rd. Extension
- Welaunee Greenway



Overall Network County-Wide

- Existing Facilities
- Committed Projects
- Neighborhood Network
- Major Projects





Overall Plan Recommendations

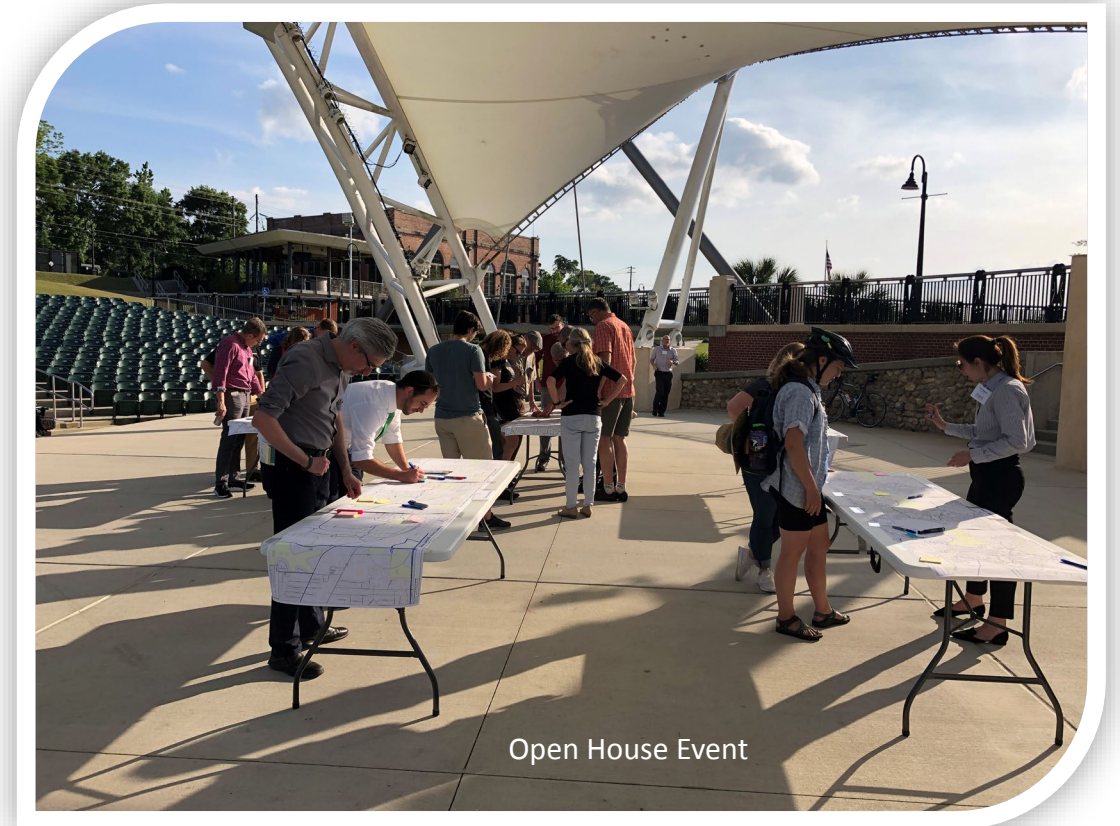
- Bicycle and Pedestrian Technical Committee
- Mobile App
- Major Connections
- Comprehensive Plan Amendments
- Data Collection
- Public Education Campaign





Next Steps

- Finalize Master Plan
- CRTPA Board Adoption in November 2019
- Adoption by City Commission
- Adoption by Board of County Commissioners
- Coordination and Implementation Through City and County Departments



Open House Event