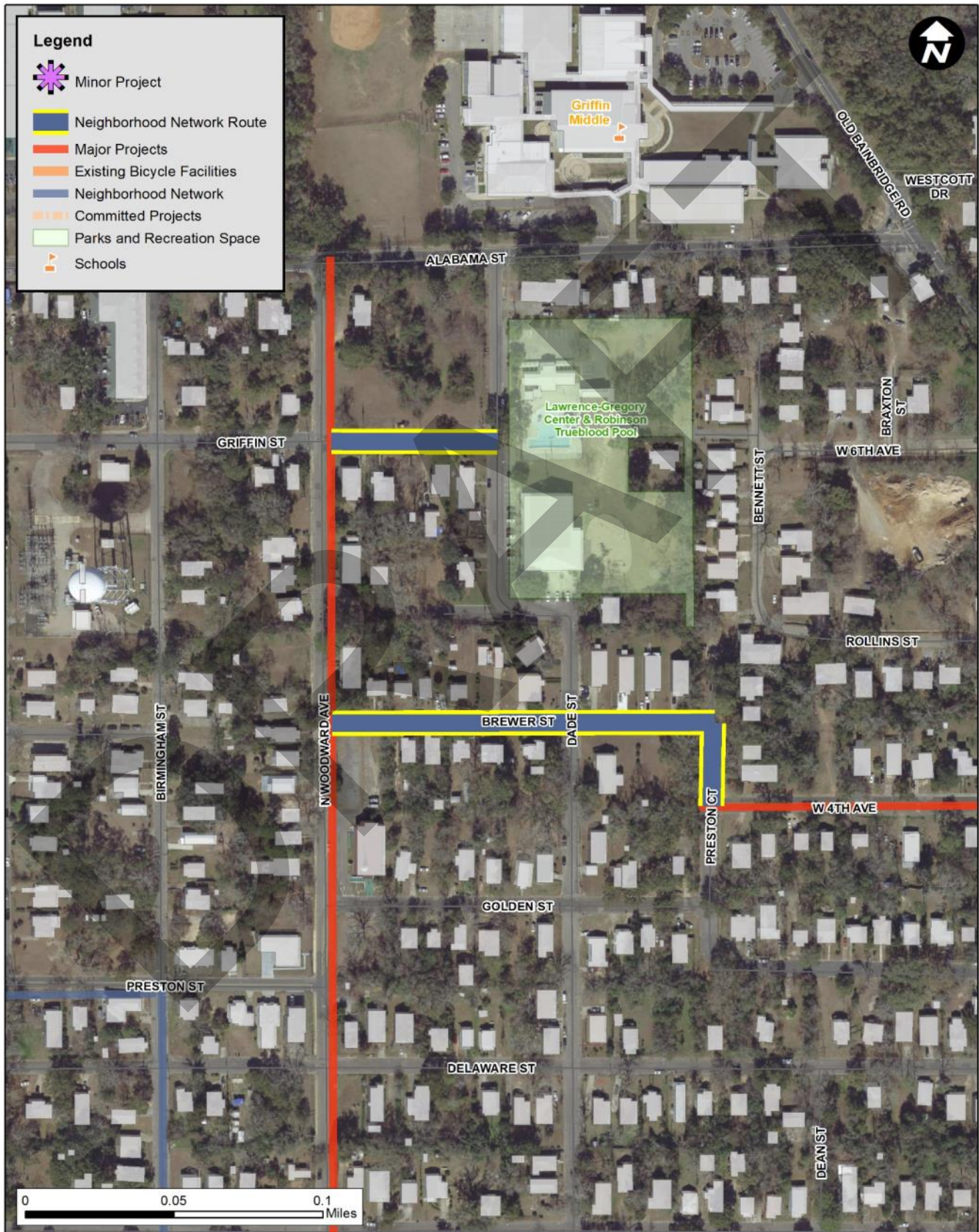




Neighborhood Network Route: 2K



Tier III Neighborhood Network Route: 2K

Griffin Street, Brewer Street, Preston Court

Route Description

This neighborhood network route is recommended to provide connectivity along neighborhood streets between major projects on N. Woodward Avenue and W. 4th Avenue. It provides a connection to the Lawrence-Gregory Community Center. According to ACS 2017, this area is characterized by nearly 47% of the individuals below the poverty level and borders an area where 28% of households do not have access to a vehicle, indicating a need for alternative transportation opportunities. It is likely that children will be using these routes to access the amenities at the community center, so providing a well-marked route and signage is important.

Route Details

Project Length: .21 miles

Route Costs

Planning Level Cost Estimate Range (including 20% contingency): \$5,127—\$7,690

Goal Satisfaction



SAFETY



MULTIMODAL



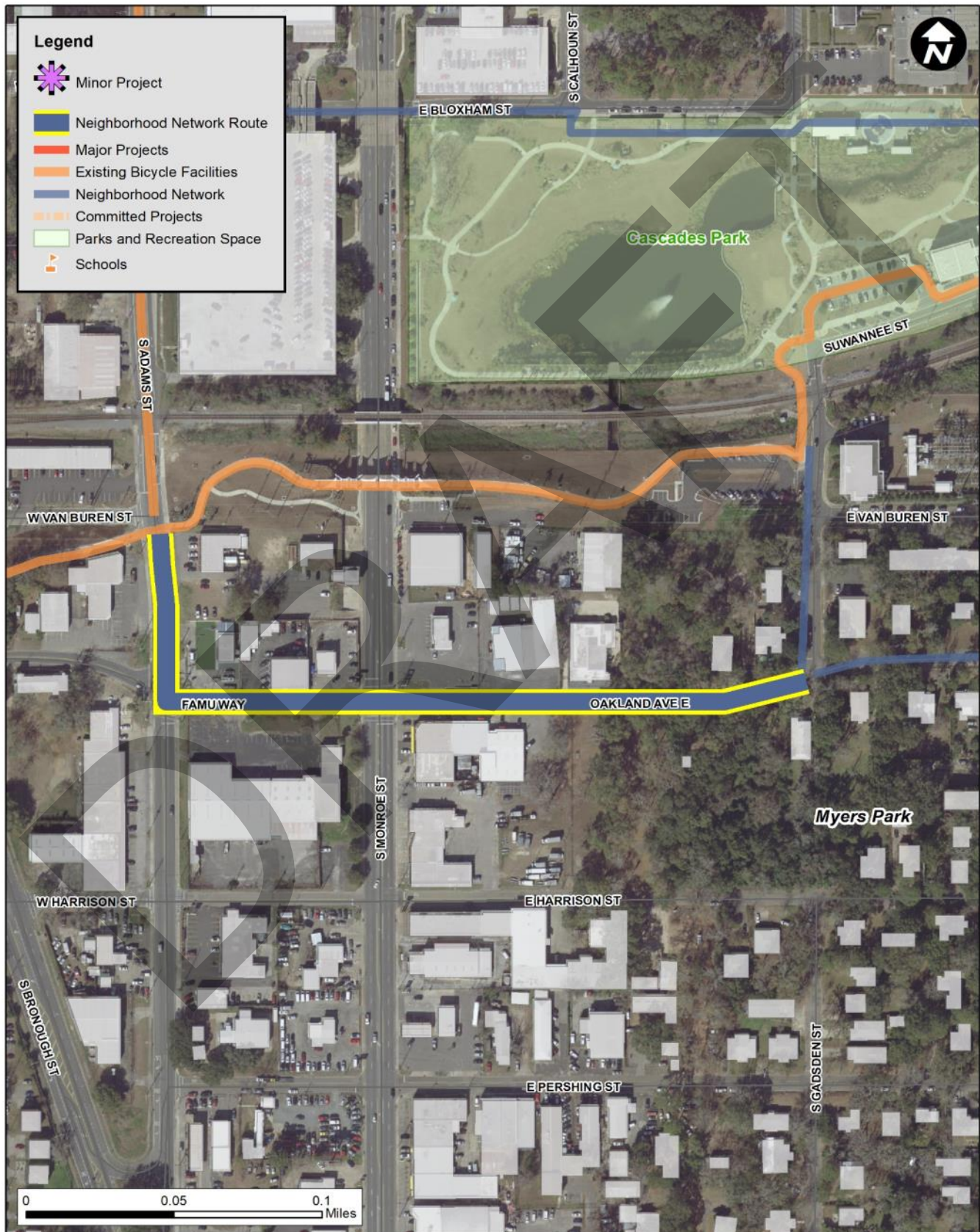
EQUITY



CONNECTIVITY



Neighborhood Network Route: 2N



Tier III Neighborhood Network Route: 2N

FAMU Way, Oakland Avenue E.

Route Description

This route connects the Myers Park neighborhood and Cascades Park to businesses and restaurants in the South Monroe area, the Capital Cascades Trail, and facilities on S. Adams Street. This route provides options for alternative connections to areas of interest without having to utilize park facilities at Cascades Park. The South Monroe area, referred to as SOMO, is an up and coming area, and providing access to it for bicyclists and pedestrians through various routes can encourage alternative transportation. This route also provides connectivity that can foster longer trips.

Route Details

Project Length: .28 miles

Route Costs

Planning Level Cost Estimate Range (including 20% contingency): \$6,620 — \$9,931

Goal Satisfaction



SAFETY



MULTIMODAL



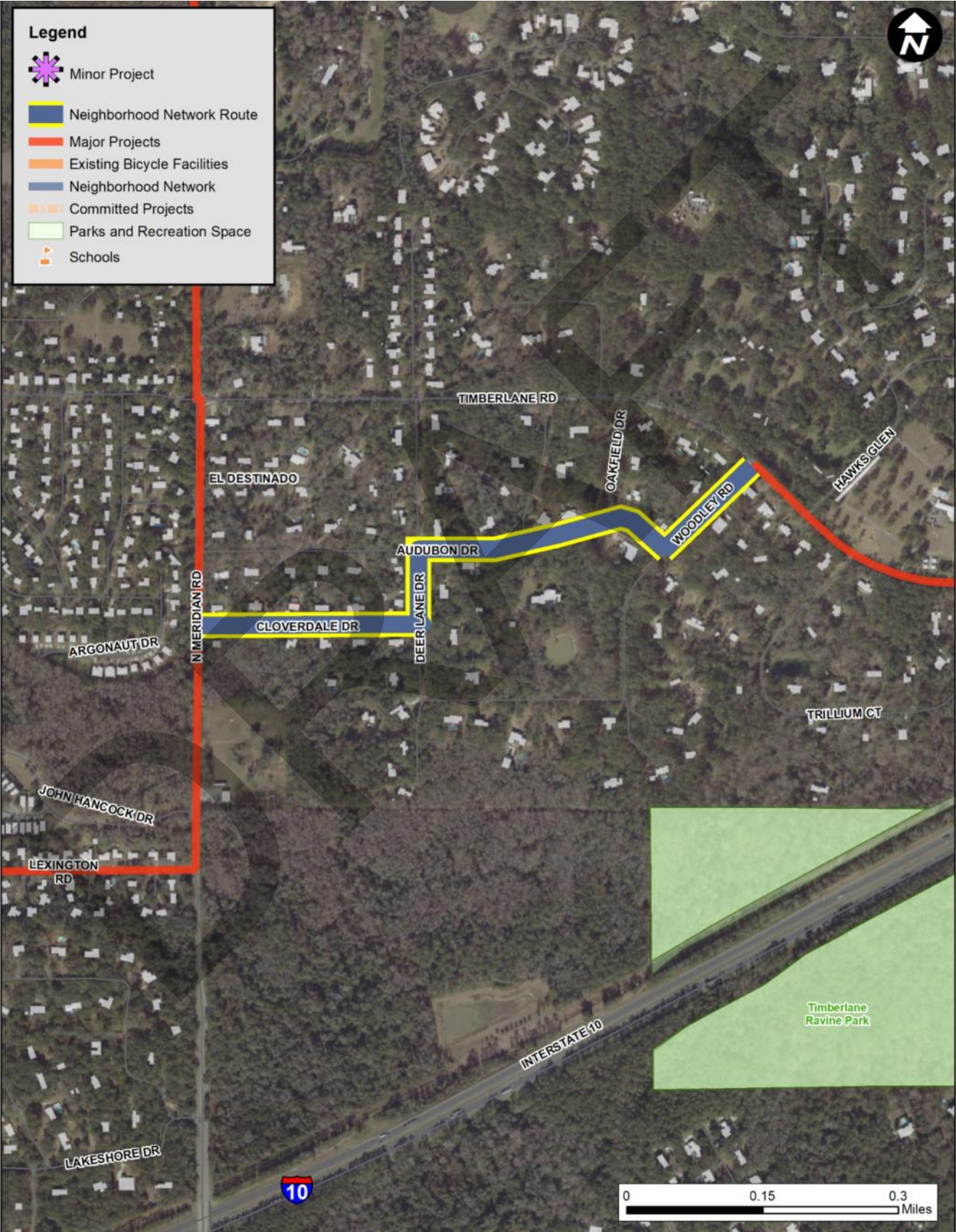
EQUITY



CONNECTIVITY



Neighborhood Network Route: 4C



Tier III Neighborhood Network Route: 4C

Cloverdale Drive, Deer Lane Drive, Audubon Drive, Woodley Road

Route Description

This neighborhood network route connects major projects on Timberlane Road, Meridian Road, and Lexington Road. This route has an adequate bicycle comfort level, and allows users to avoid high elevation on Timberlane Road, which was noted as a major barrier to east-west access to Market Square from residential areas in comments received from the public. This route also provides opportunities for residents within the neighborhood to access the neighborhood network and access destinations throughout the City and County via other routes and major projects. Inadequate bicycle comfort level characterizes most roads in this area, so providing an option for avoiding major corridors and making connections was important.

Route Details

Project Length: .76 miles

Route Costs

Planning Level Cost Estimate Range (including 20% contingency): \$18,332—\$27,498

Goal Satisfaction



SAFETY



CONNECTIVITY



Neighborhood Network Route: 5M



Tier III Neighborhood Network Route: 5M

Florida Avenue, E. Forest Drive, Glendale Court

Route Description

This neighborhood network route is recommended to provide a straightforward and well-marked connection between a major project on Thomasville Road and the Glendale Playground. It also gives residents of the Glendale neighborhood an opportunity to easily access the neighborhood network and make connections to other destinations in the City via Thomasville Road, which connects to numerous routes that provide both east-west and north-south connectivity between focus areas and beyond.

Route Details

Project Length: .23 miles

Route Costs

Planning Level Cost Estimate Range (including 20% contingency): \$5,496—\$8,245

Goal Satisfaction



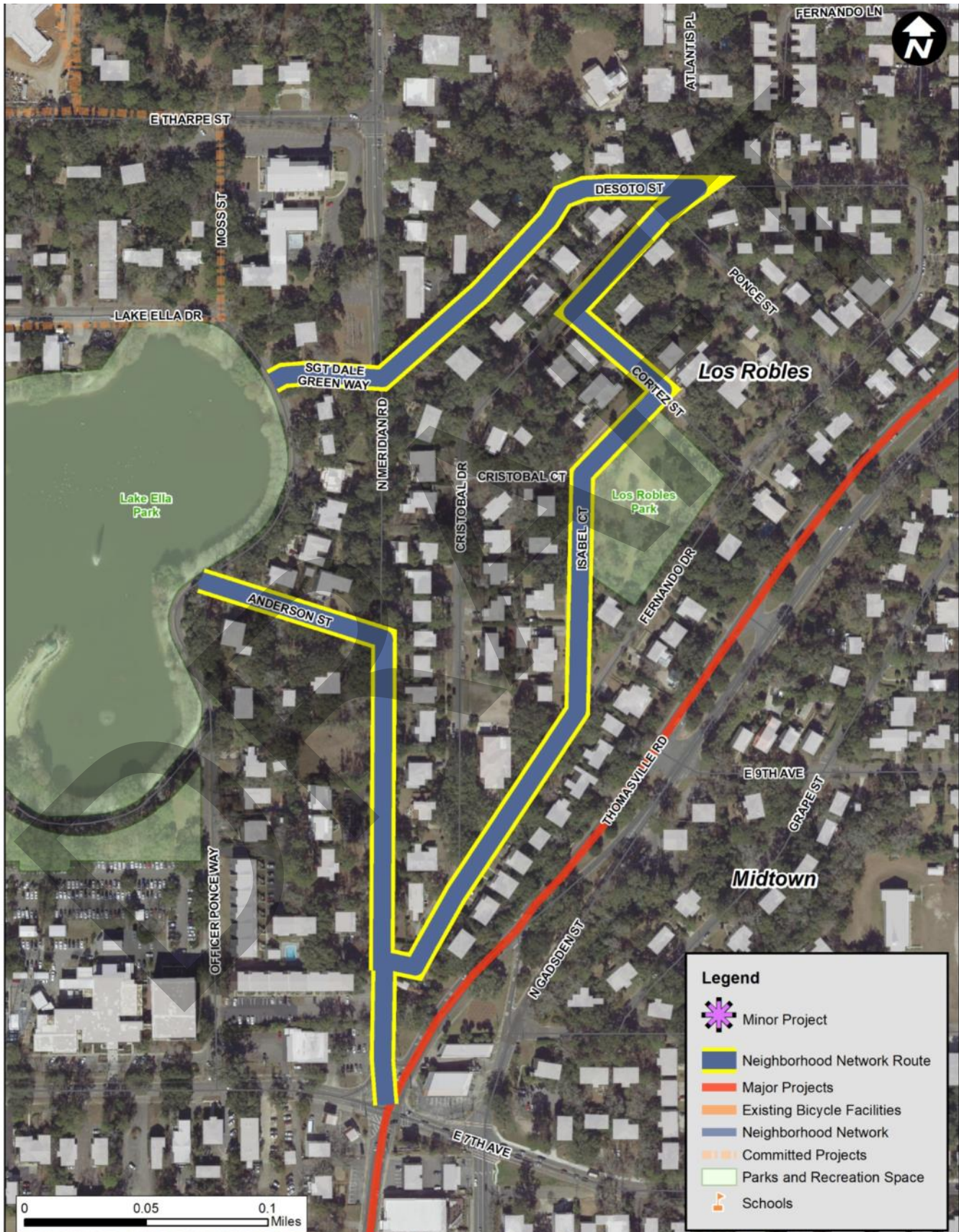
MULTIMODAL



CONNECTIVITY



Neighborhood Network Route: 5N



Tier III Neighborhood Network Route: 5N

Fernando Drive, Desoto Street, Cristobal Drive, Cortez Street, Isabel Court, N. Meridian Road, Anderson Street

Route Description

This neighborhood network route is recommended to connect a major project on Thomasville Road to Lake Ella through the Los Robles neighborhood. Residents in this neighborhood will be able to access the neighborhood network, and make connections to other routes and major projects in the area. It also provides an opportunity for inclusion of bicycle facilities on a portion of N. Meridian Road that connects 7th Avenue to Lake Ella, which many bicyclists during the public engagement process had identified as dangerous and not conducive to biking or walking. N. Meridian Road is a north-south connector, but because of its status as a canopy road, does not have sidewalks or bicycle facilities. There is future potential for the addition of sidewalks, which would better accommodate less confident cyclists on this road. Additionally, the Midtown Transportation Plan has proposed the addition of pedestrian crossings at the intersection of Desoto Street and Meridian Road, and at the entrance to Los Robles on N. Meridian Road at Fernando Drive, which would make this route well-marked and safe for users.

Route Details

Project Length: .89 miles

Route Costs

Planning Level Cost Estimate Range (including 20% contingency): \$39,428—\$62,143

Goal Satisfaction



SAFETY



MULTIMODAL



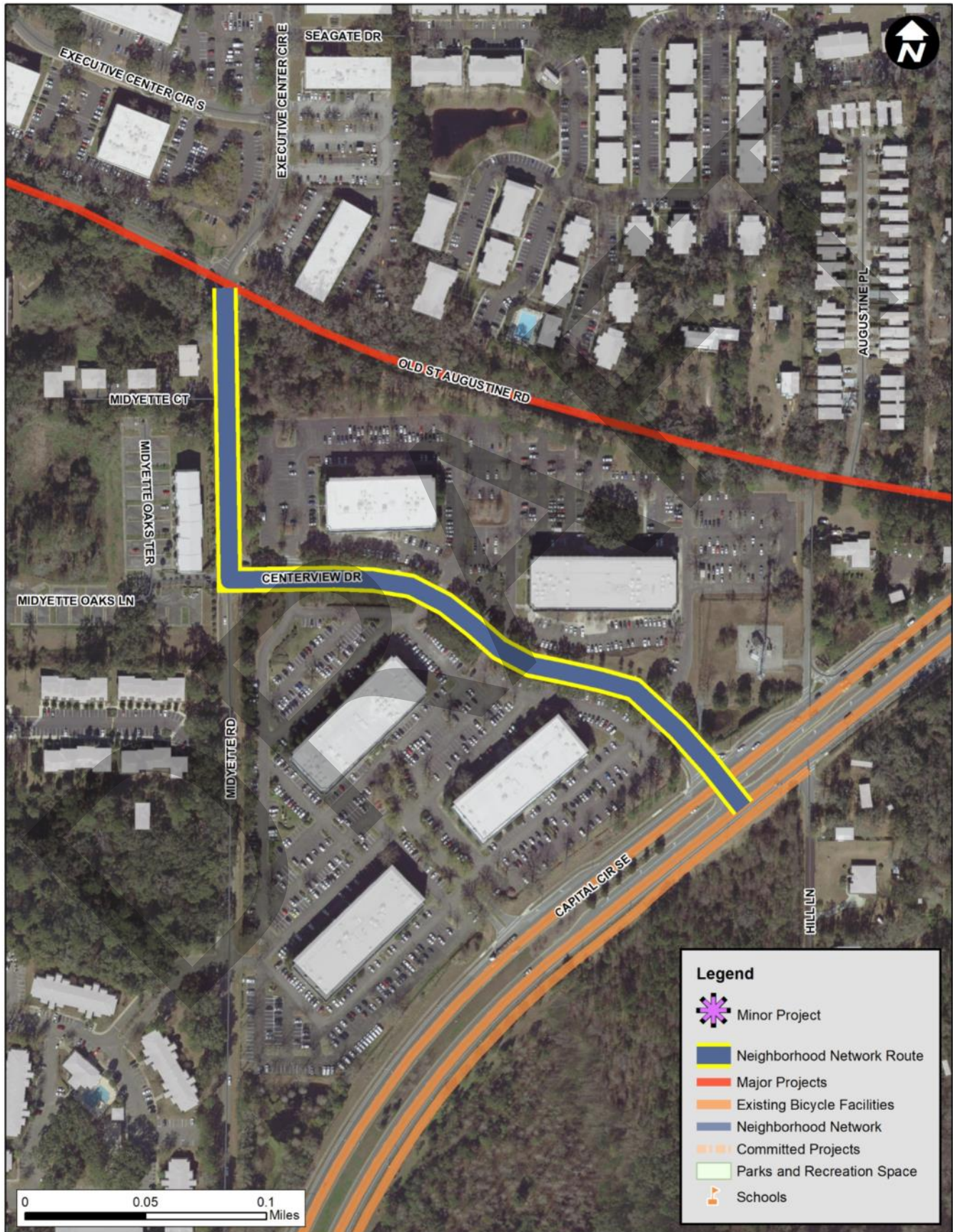
EQUITY



CONNECTIVITY



Neighborhood Network Route: LC3



Tier III Neighborhood Network Route: LC3

Midyette Road, Centerview Drive

Route Description

This route is recommended to provide bicycle and pedestrian connectivity in areas of Leon County that are outside of the five focus areas identified in this Plan. It was identified to connect the major project on Old St. Augustine Road and bicycle lanes on Capital Circle SE. There is a multi-use path on the east side of Capital Circle SE that can be accessed by using a crosswalk at either Orange Avenue or Old St. Augustine Road. This route has an inadequate bicycle comfort level, indicating a need for traffic calming measures, such as speed bumps, to slow thru-traffic. Midyette Road has sidewalks on the west side of the road, and Centerview Drive is located in an office park and has sidewalks on both sides of the road. These sidewalks can be used by less confident bicyclists and pedestrians using this route.

Route Details

Project Length: .37 miles

Route Costs

Planning Level Cost Estimate Range (including 20% contingency): \$8,832—\$13,248

Goal Satisfaction



SAFETY



MULTIMODAL



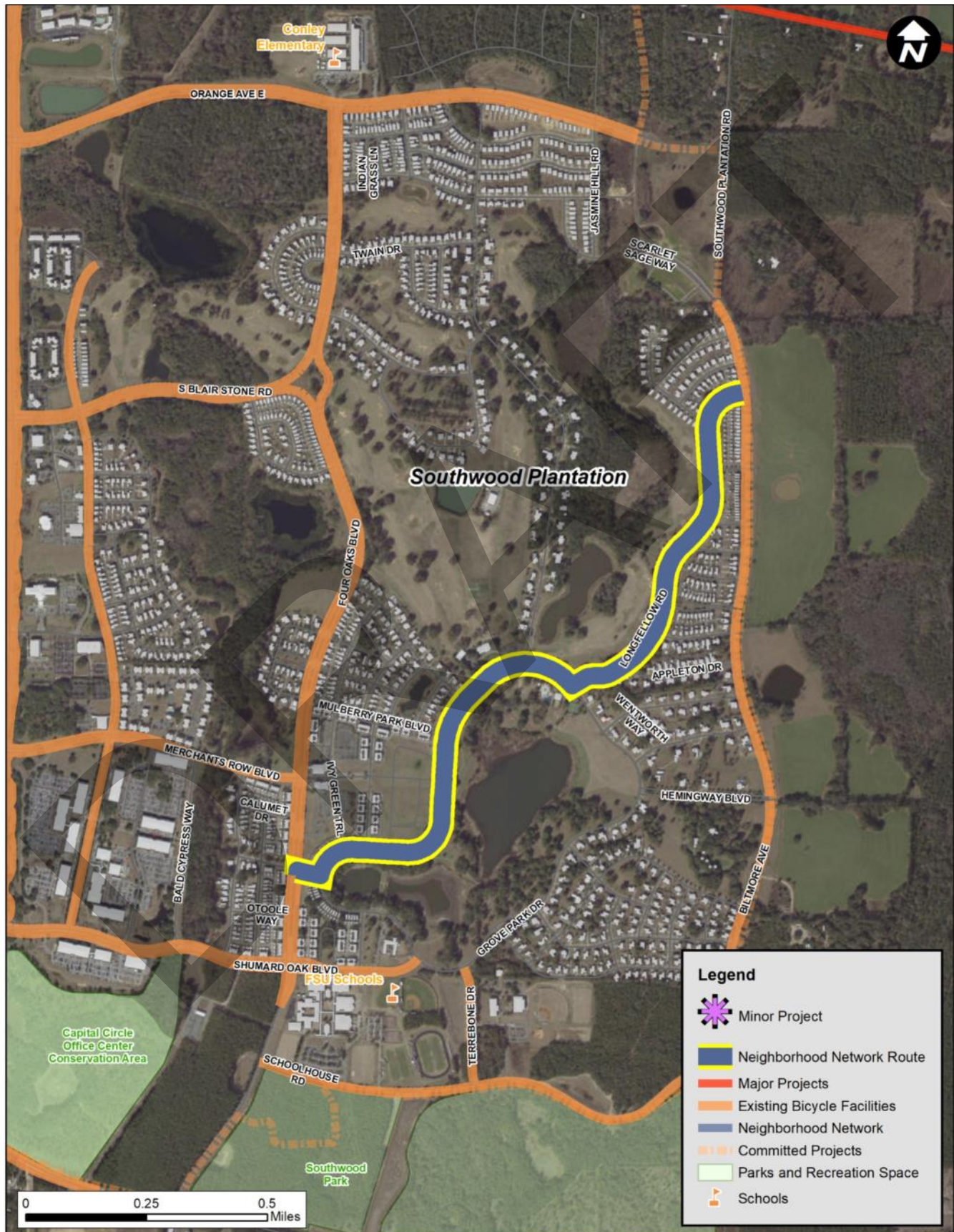
EQUITY



CONNECTIVITY



Neighborhood Network Route: LC6



Tier III Neighborhood Network Route: LC6

Longfellow Road

Route Description

This route is recommended to provide bicycle and pedestrian connectivity in areas of Leon County that are outside of the five focus areas identified in this Plan. It is located in the Southwood community and provides connectivity between existing facilities on Four Oaks Boulevard and Biltmore Avenue. This provides a bicycle route that goes directly through the community rather than around the perimeter of it. This route will provide additional opportunities for long trips with the extension and realignment of Biltmore Avenue planned by the St. Joe Company. Bicycle facilities will be included in that project and provide opportunities to connect to Orange Avenue, a major project on Old St. Augustine Road, and a major project on Apalachee Parkway, which will facilitate a connection to Conner Boulevard and Tom Brown Park.

Route Details

Project Length: 1.68 miles

Route Costs

Planning Level Cost Estimate Range (including 20% contingency): \$40,358—\$60,538

Goal Satisfaction

