



Thomasville Road **MULTI-USE PATH** Feasibility Study



**CRTPA Committee
Meetings**

October 6, 2020

Project Intent



Thomasville Road
**MULTI-USE
PATH** Feasibility Study

- Initial pilot project from *TLC Bicycle and Pedestrian Master Plan 2019 Update*
- Technical Review of a 12' wide asphalt multi-use path along corridor
- Important network connection
- “Midtown-to-Market”



Project Goals



Thomasville Road
**MULTI-USE
PATH** Feasibility Study



Safety

Provide a safe connection between destinations along Thomasville Road



Positive User Experience

Ensure positive user experience by incorporating natural features, creative design, and ADA compliance.



Accessibility

Create a facility that is accessible to variety of user types, and is appropriate for at least three of the four bicycle comfort levels



Equitable

Make the facility available to people with disabilities, low-income areas, aging populations, and areas of low vehicle ownership



Network Connectivity

Grow network connectivity by providing opportunities to access destinations along and beyond Thomasville Road



Multimodal

Accommodate a variety of modes on the facility



Health & Recreational

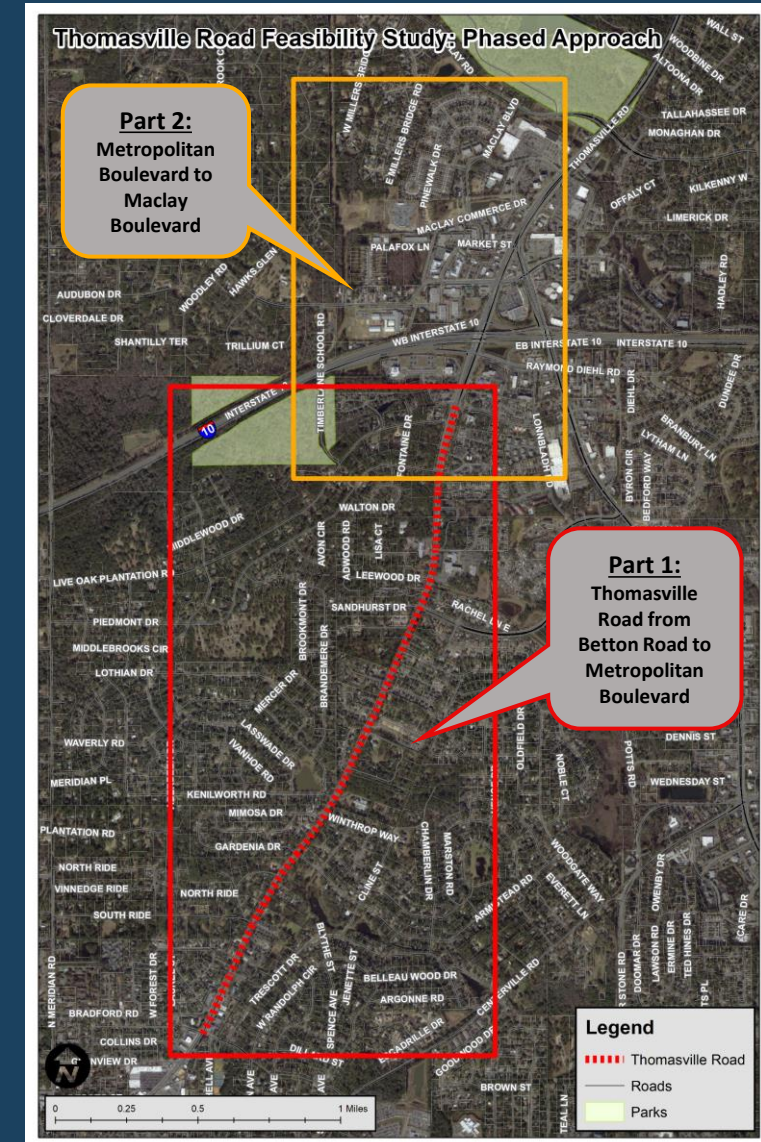
Provide opportunities for extended trips to recreate and exercise.

Project Approach



Thomasville Road
**MULTI-USE
PATH** Feasibility Study

- Phased Approach
 - Part 1: Betton Road to Metropolitan Boulevard
 - Part 2: Metropolitan Boulevard to Maclay Boulevard



Completed Activities



Thomasville Road
**MULTI-USE
PATH** Feasibility Study

- Site reconnaissance
- Existing conditions assessment
 - Available right-of-way
 - Sidewalk location and condition
 - Existing bicycle facilities
 - Intersections
 - Parks & Recreation
 - Schools
 - Preliminary tree assessment
- Identified opportunities and challenges
- Developed *Guiding Principles of Design*
- Met with Bicycle-Pedestrian Master Plan Working Group





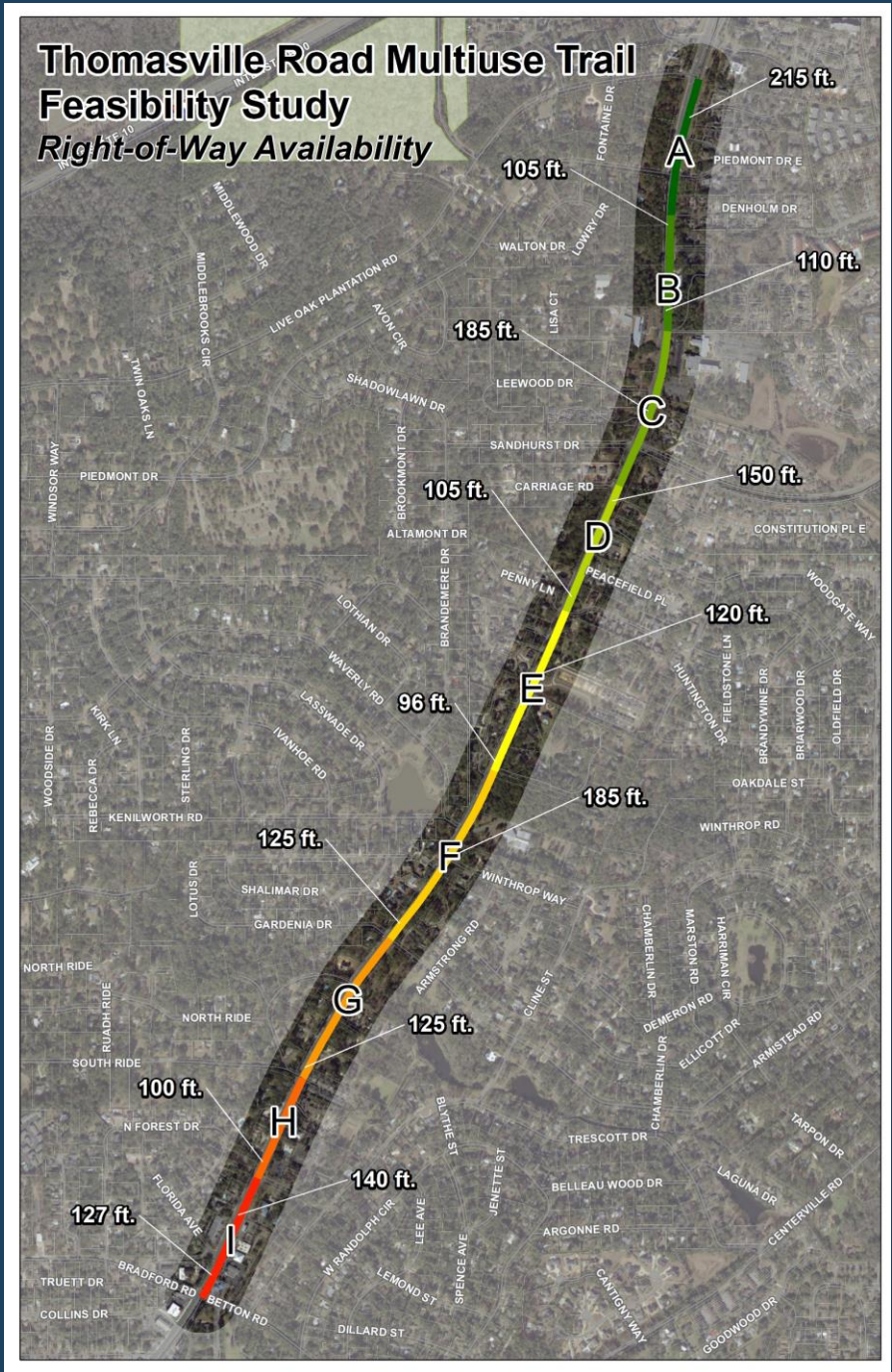
Part 1

Betton Road to Metropolitan Boulevard

Existing Conditions

Thomasville Road: Betton Road to Metropolitan Boulevard

Roadway	<ul style="list-style-type: none"> • Four-lane bidirectional • Landscaped median and left turn lanes • 4 major intersections: Metropolitan Boulevard, Hermitage Boulevard, Woodgate Way, Armistead Road • 45 mile per hour speed limit
Bicycle & Pedestrian	<ul style="list-style-type: none"> • ADA compliant sidewalk on the east side • Non-ADA compliant sidewalk on west side • 7-foot On-street Designated Bicycle lanes north of Waverly Road
Multimodal	<ul style="list-style-type: none"> • Transit stops on both sides of the corridor



Opportunities *Betton Road to Metropolitan Boulevard*



Thomasville Road
**MULTI-USE
PATH** Feasibility Study

Parks & Recreation

- Dorothy B. Oven Park
- McCord Park
- Waverly Pond
- Goose Pond Trail

Existing Facility Connections

- Hermitage Boulevard – designated bicycle lanes
- Metropolitan Boulevard – designated bicycle lanes
- Goose Pond Trail – around drainage pond north of Hermitage Boulevard

Positive User Experience

- Shade from large trees along corridor
- Well-landscaped

Complementing Projects

- McCord Pond Drainage Ditch Improvements
- Midtown Area Transportation Plan

Safety Improvements

- Several opportunities to improve intersections and dangerous driveways:
 - Live Oak Plantation Road
 - Post Road
 - Waverly Road
- Signalized intersections along the route provide opportunities for safe bicycle-pedestrian crossing:
 - Hermitage Boulevard
 - Woodgate Way

Challenges

Betton Road to Metropolitan Boulevard



Thomasville Road
**MULTI-USE
PATH** Feasibility Study

Right-of-Way Constraints

- Trees
- Utility Pole Location
- Private Property in right-of-way
- Businesses

Obstacles

- Trees
- Utility Pole Location
- Retaining walls
- Mailboxes
- Driveways & Neighborhood Entrances

Condition of Existing Facilities

- Sidewalk on west side is not ADA compliant, and is made up of crumbling asphalt in many areas
- Buffer in some areas is minimal to non-existent
- Bike-lanes are not consistent
- Noise

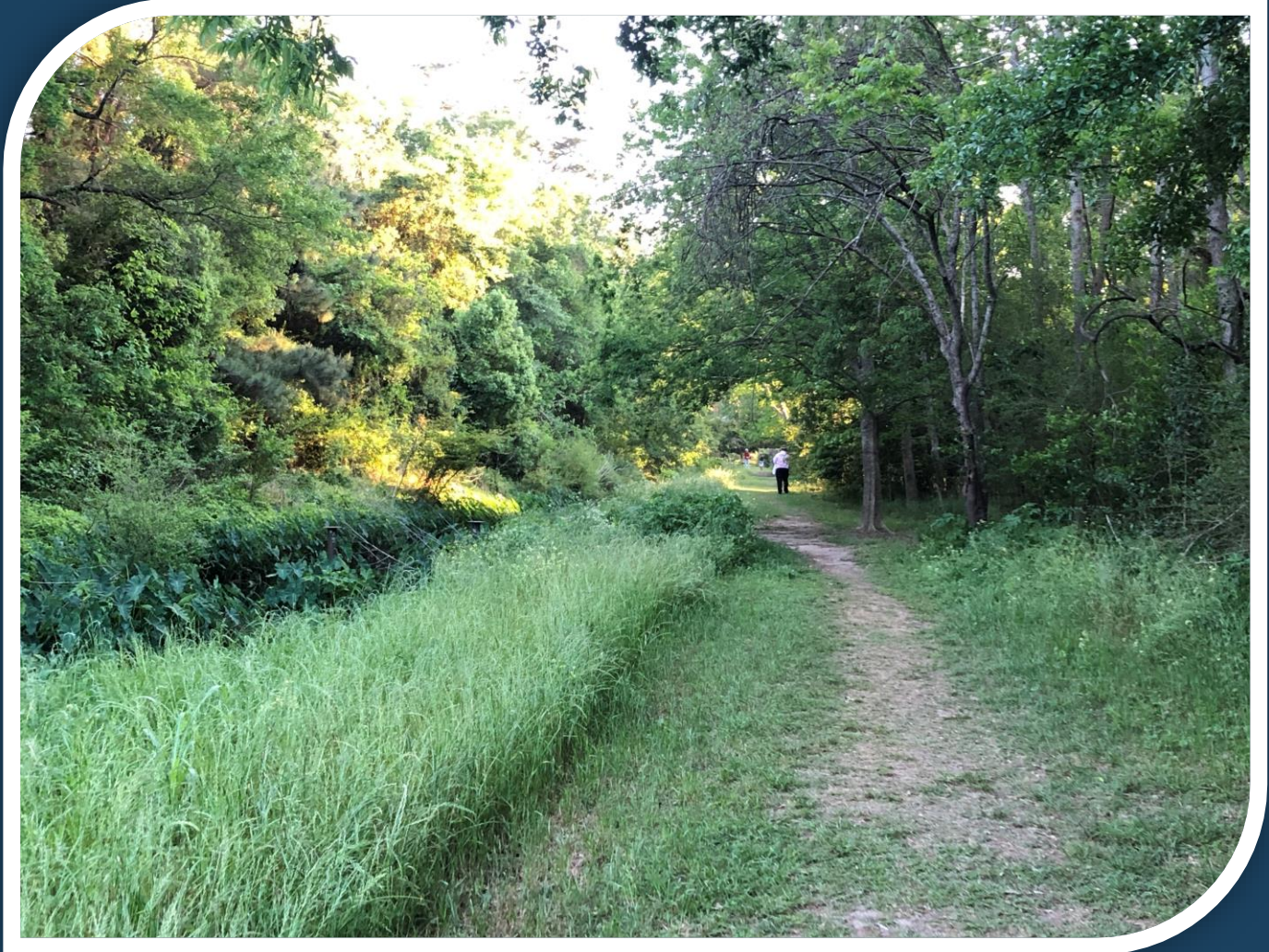
Complementing Projects



Thomasville Road
**MULTI-USE
PATH** Feasibility Study

McCord Pond Drainage Ditch Improvements

- Currently under design
- Construction is anticipated to begin in 2021
- Potential opportunity to partner with the City of Tallahassee to incorporate a multi-use path



Complementing Projects



Thomasville Road
**MULTI-USE
PATH** Feasibility Study

Midtown Area Transportation Plan

- A shared-use path was proposed on Thomasville Road from N. Monroe Street to Betton Road to allow improved conditions for bicyclists and pedestrians traveling in Midtown and beyond

EXISTING VIEW



VIEW 1



EXISTING VIEW



VIEW 2





Part 2

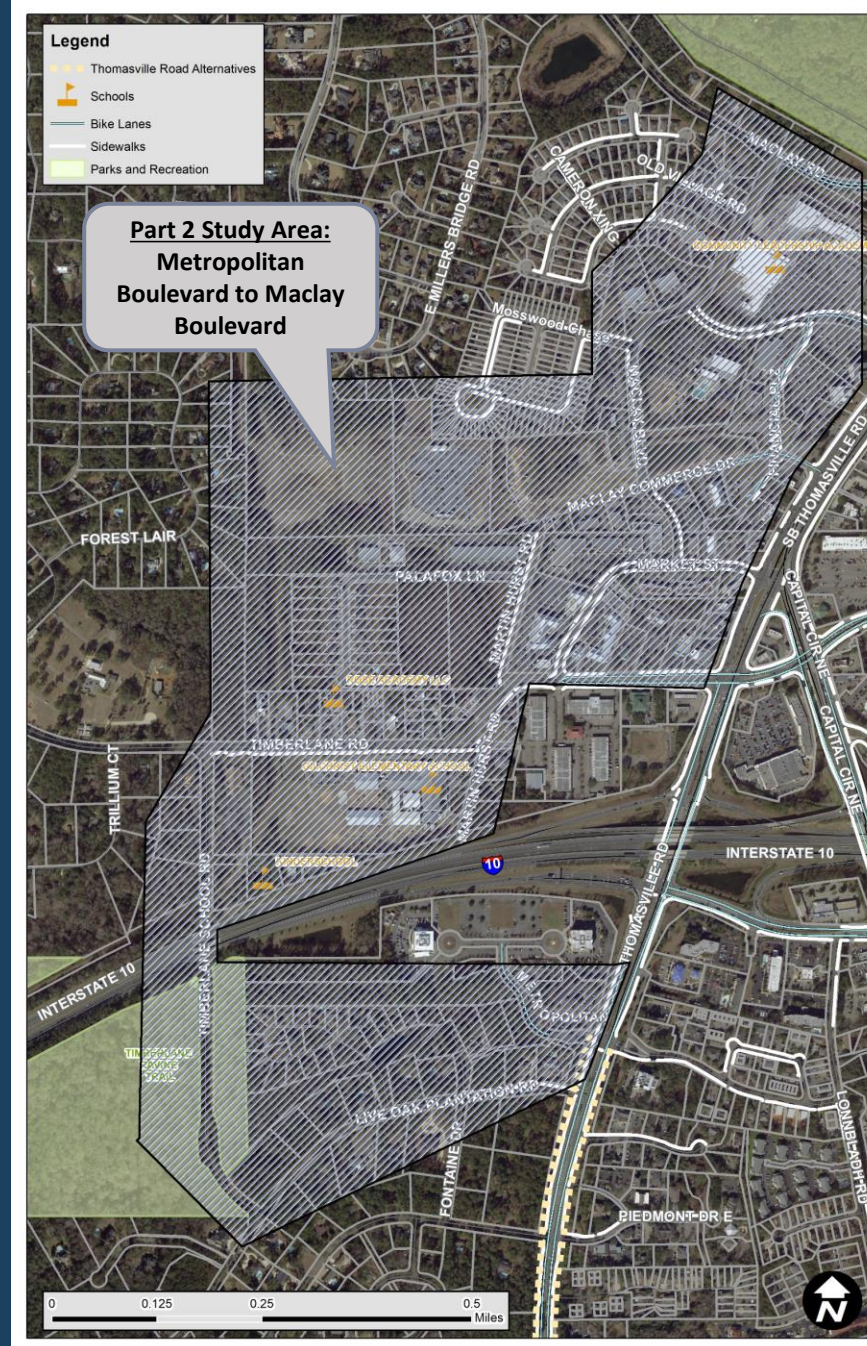
Metropolitan Boulevard to Maclay Boulevard

Existing Conditions

Metropolitan Boulevard to Maclay Boulevard

Metropolitan Boulevard to Maclay Boulevard

Metropolitan Boulevard	<ul style="list-style-type: none"> Two-lane bidirectional On-street Designated Bicycle Lanes Sidewalk on south side of corridor
Live Oak Plantation Road	<ul style="list-style-type: none"> Two-lane bidirectional Sidewalk on north side from Thomasville Road to east of Timberlane School Road
Timberlane School Road	<ul style="list-style-type: none"> Two-lane bidirectional
Timberlane Road	<ul style="list-style-type: none"> Two-lane bidirectional Center turn lane Sidewalks on both sides
Martin Hurst Road	<ul style="list-style-type: none"> Two-lane bidirectional Sidewalks on west side
Maclay Commerce Road	<ul style="list-style-type: none"> Two-lane bidirectional
Maclay Boulevard	<ul style="list-style-type: none"> Two-lane directional Center turn lane Sidewalks on east side



Opportunities & Challenges *Metropolitan Boulevard to Maclay Boulevard*



Opportunities

- Allows for more user types to continue to use the facility
- Positive User Experience
- Network Connectivity
- Complementing Projects

Challenges

- Right-of-way
- Elevation & Grade
- Potential Neighborhood opposition
- Allowable uses associated with easements

Complementing Projects



Thomasville Road
**MULTI-USE
PATH** Feasibility Study

Market District Multi-purpose Stormwater Project

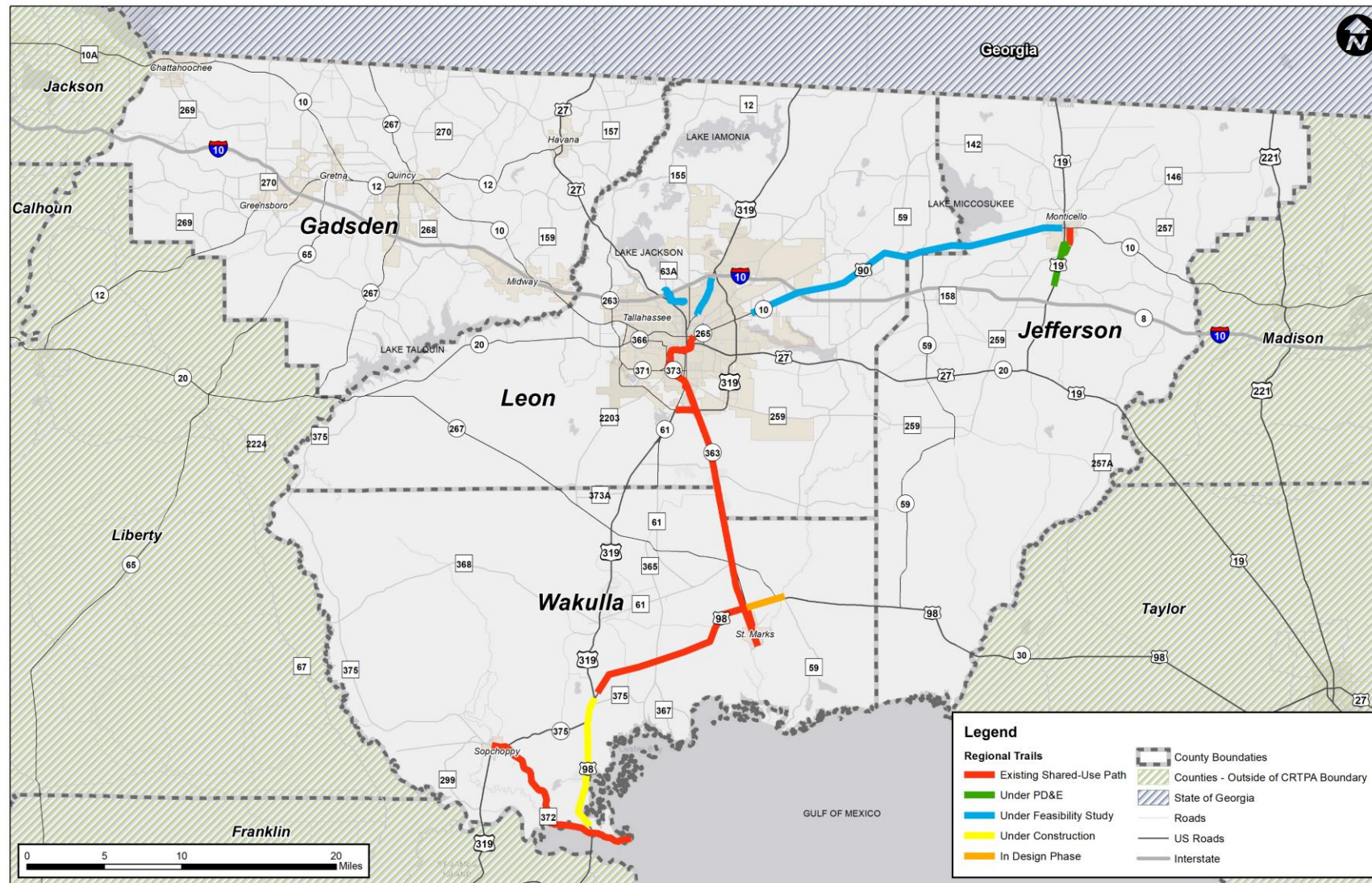
- Blueprint and City of Tallahassee
- Currently in preliminary engineering phase and conducting public engagement
- Includes roadway improvements
- Potential opportunity to connect facilities from Thomasville Road via Maclay Commerce Drive and Martin Hurst Road



Regional Connections



Thomasville Road
**MULTI-USE
PATH** Feasibility Study

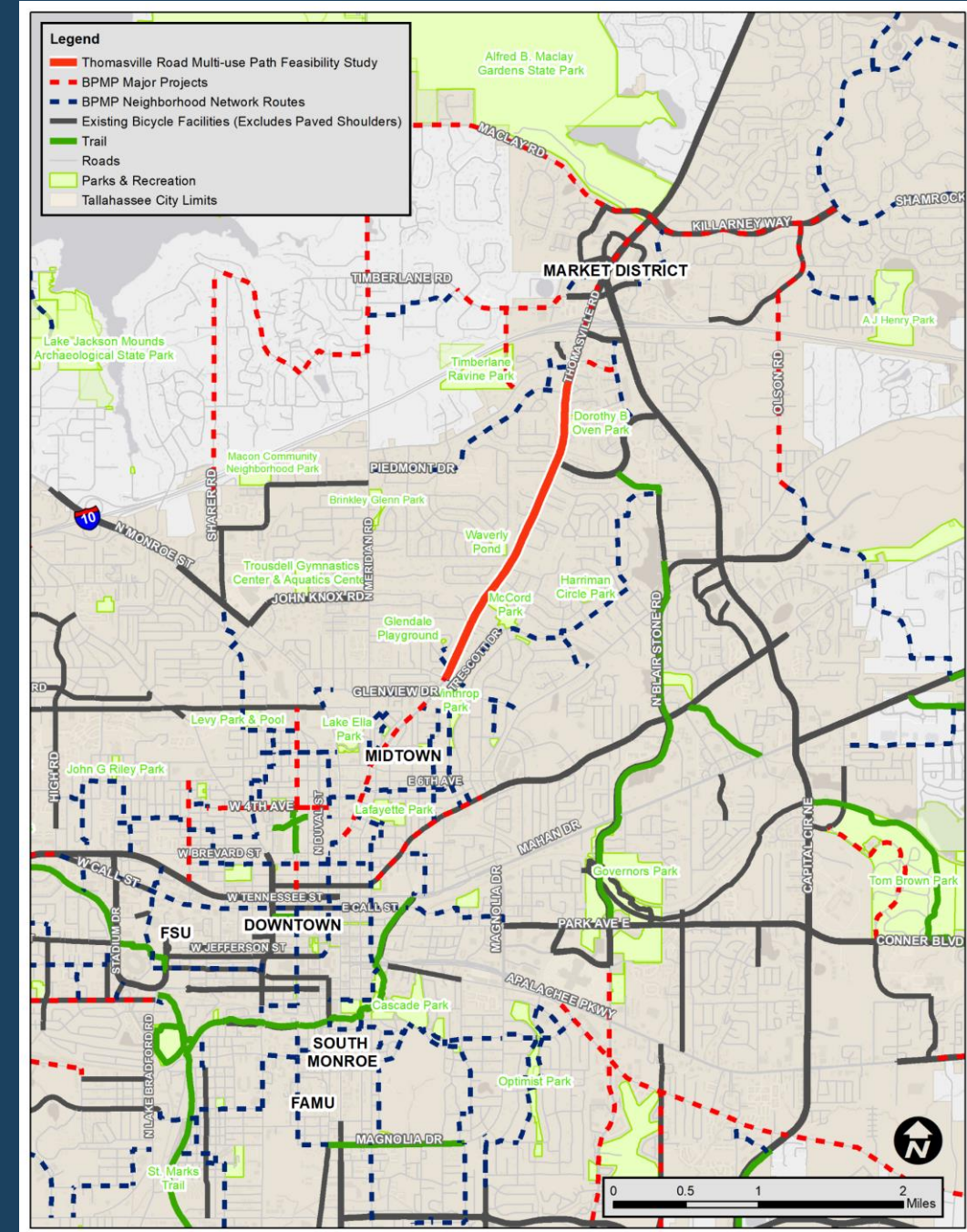


Thomasville Road is one of 3 projects under feasibility in Leon County that will contribute to the Regional Trails network

Local Connections

This project will provide north/south connectivity between:

- Northeast Tallahassee and Market District
- Midtown
- Downtown
- FAMU Way and Cascades Park
- St. Marks Trail



Next Steps



- Public Engagement
 - October 2020
 - Additional stakeholder meetings
 - Coordinate with local neighborhood associations
 - Organize engagement opportunities with the general public
- Identify feasible alternatives based on technical analysis and feedback from the public

Questions?



Thomasville Road
MULTI-USE
PATH Feasibility Study