

**Trees Along Thomasville Road Between Betton Road and
Metropolitan Boulevard (Data Collected as of August 2021)**

<u>Map Reference</u>	<u>Tree</u>	<u>Condition</u>	<u>Side of Corridor</u>	<u>Location</u>	<u>Characteristics</u>
<u>Segment 1: Betton Road to Armistead Road</u>					
1	21" live oak	Fair	East	North of Post Road	Trimmed for utility lines, somewhat one-sided canopy
2	15" live oak	Fair	East	North of Post Road	Trimmed for utility lines, somewhat one-sided canopy
3	26" live oak	Fair	East	North of Post Road	Trimmed for utility lines, somewhat one-sided canopy, Heritage tree
4	27" live oak	Fair	East	North of Post Road	Trimmed for utility lines, somewhat one-sided canopy, Heritage tree
5	22" live oak	Fair	East	North of Post Road	Trimmed for utility lines, somewhat one-sided canopy, Heritage tree
6	24" live oak	Fair	West	Between South Ride and North Ride	
7	42" live oak	Fair	West	Between South Ride and North Ride	Multi-stem live oak
8	19" sugar maple	Good	East	McCord Park, south of Armistead Road	
9	31" live oak	Good	East	McCord Park, south of Armistead Road	
10	21" live oak	Good	East	McCord Park, south of Armistead Road	Somewhat weak canopy due to shade competition
11	31" live oak	Good	East	McCord Park, south of Armistead Road	
12	15" live oak	Good	East	McCord Park, south of Armistead Road	
<u>Segment 2: Armistead Road to Woodgate Way</u>					
13	33" live oak	Fair	West	South of Mimosa Drive	
14	23" water oak	Poor	West	South of Mimosa Drive	Major decay
15	70" live oak	Good	West	South of Mimosa Drive	Some canopy decline typical of older trees

***Trees Along Thomasville Road Between Betton Road and
Metropolitan Boulevard (Data Collected as of August 2021)***

<u>Map Reference</u>	<u>Tree</u>	<u>Condition</u>	<u>Side of Corridor</u>	<u>Location</u>	<u>Characteristics</u>
16	56" live oak	Good	East	Rabbit Hill Road	
17	20" live oak	Fair	West	South of Penny Lane	Trimmed for utility lines, one-sided canopy
18	24" live oak	Poor	West	South of Penny Lane	Trimmed for utility lines, one-sided canopy
19	25" live oak	Fair	West	South of Penny Lane	Trimmed for utility lines, one-sided canopy
20	42" live oak	Fair	West	South of Renae Way	Trimmed for utility lines, one-sided canopy
21	14" water oak	Fair	West	South of Renae Way	Trimmed for utility lines, one-sided canopy
22	34" live oak	Fair	West	South of Renae Way	Trimmed for utility lines, one-sided canopy
23	44" live oak	Fair	West	South of Renae Way	Trimmed for utility lines, one-sided canopy
24	32" live oak	Good	East	South of Peacefield Place	
25	28" live oak	Good	East	South of Peacefield Place	
26	31" live oak	Fair	West	North of Penny Lane	Trimmed for utility lines, one-sided canopy
27	28" live oak	Fair	West	North of Penny Lane	Trimmed for utility lines, one-sided canopy
<u>Segment 3: Woodgate Way to Metropolitan Boulevard</u>					
28	46" live oak	Good	East	South of Hermitage Boulevard	Previous root impact
29	Live Oak	Fair	East	In front of Thomasville Road Baptist Church	In decline, with thin canopies, missing branches, and some degree of cavity and decay
30	Live Oak	Poor	East	In front of Thomasville Road Baptist Church	In decline, with thin canopies, missing branches, and some degree of cavity and decay
31	Live Oak	Fair	East	In front of Thomasville Road Baptist Church	In decline, with thin canopies, missing branches, and some degree of cavity and decay

**Trees Along Thomasville Road Between Betton Road and
Metropolitan Boulevard (Data Collected as of August 2021)**

<u>Map Reference</u>	<u>Tree</u>	<u>Condition</u>	<u>Side of Corridor</u>	<u>Location</u>	<u>Characteristics</u>
32	Live Oak	Fair	East	In front of Thomasville Road Baptist Church	In decline, with thin canopies, missing branches, and some degree of cavity and decay
33	Live Oak	Poor	East	In front of Thomasville Road Baptist Church	In decline, with thin canopies, missing branches, and some degree of cavity and decay
34	Live Oak	Fair	East	In front of Thomasville Road Baptist Church	In decline, with thin canopies, missing branches, and some degree of cavity and decay
35	Live Oak	Good	East	In front of Thomasville Road Baptist Church	
36	Live Oak	Fair	East	In front of Dorothy B. Owen Park	Large cavity/decay
37	Water Oak	Poor	West	In front of School of Arts and Sciences	Trimmed for utility lines, one-sided canopy
38	Water Oak	Fair	West	In front of School of Arts and Sciences	Trimmed for utility lines, one-sided canopy
39	Unknown	Dead	West	In front of School of Arts and Sciences	Trimmed for utility lines, one-sided canopy
40	Sweetgum	Fair	West	In front of School of Arts and Sciences	Trimmed for utility lines, one-sided canopy
41	Laurel Oak	Fair	West	In front of School of Arts and Sciences	Trimmed for utility lines, one-sided canopy
42	Sweetgum	Fair	West	In front of School of Arts and Sciences	Trimmed for utility lines, one-sided canopy

Figure 1. Trees – Segment 1



Figure 2. Trees – Segment 2

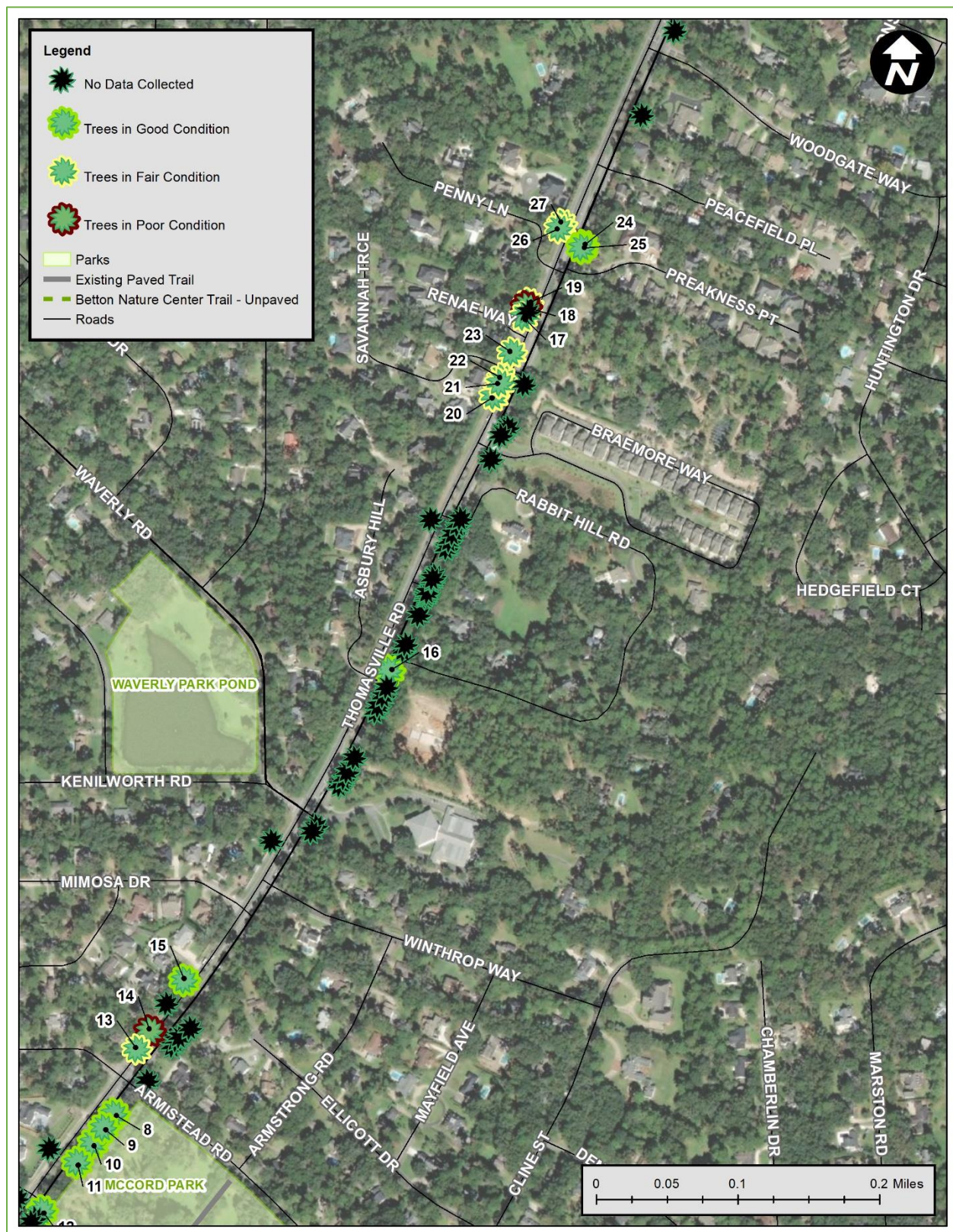


Figure 3. Trees – Segment 3

