



# Transit Development Plan - Draft

October 2015



# Agenda

---

- What is a TDP?
  - Market Analysis and Existing Conditions
  - Community Outreach
  - 10-Year Transit Development Plan
  - Next Steps
- 
- TDP conducted in conjunction with the ***Connections 2040 Regional Mobility Plan*** Update
  - TDP will become an Appendix to the ***Connections 2040 Regional Mobility Plan***

# What is the Transit Development Plan?

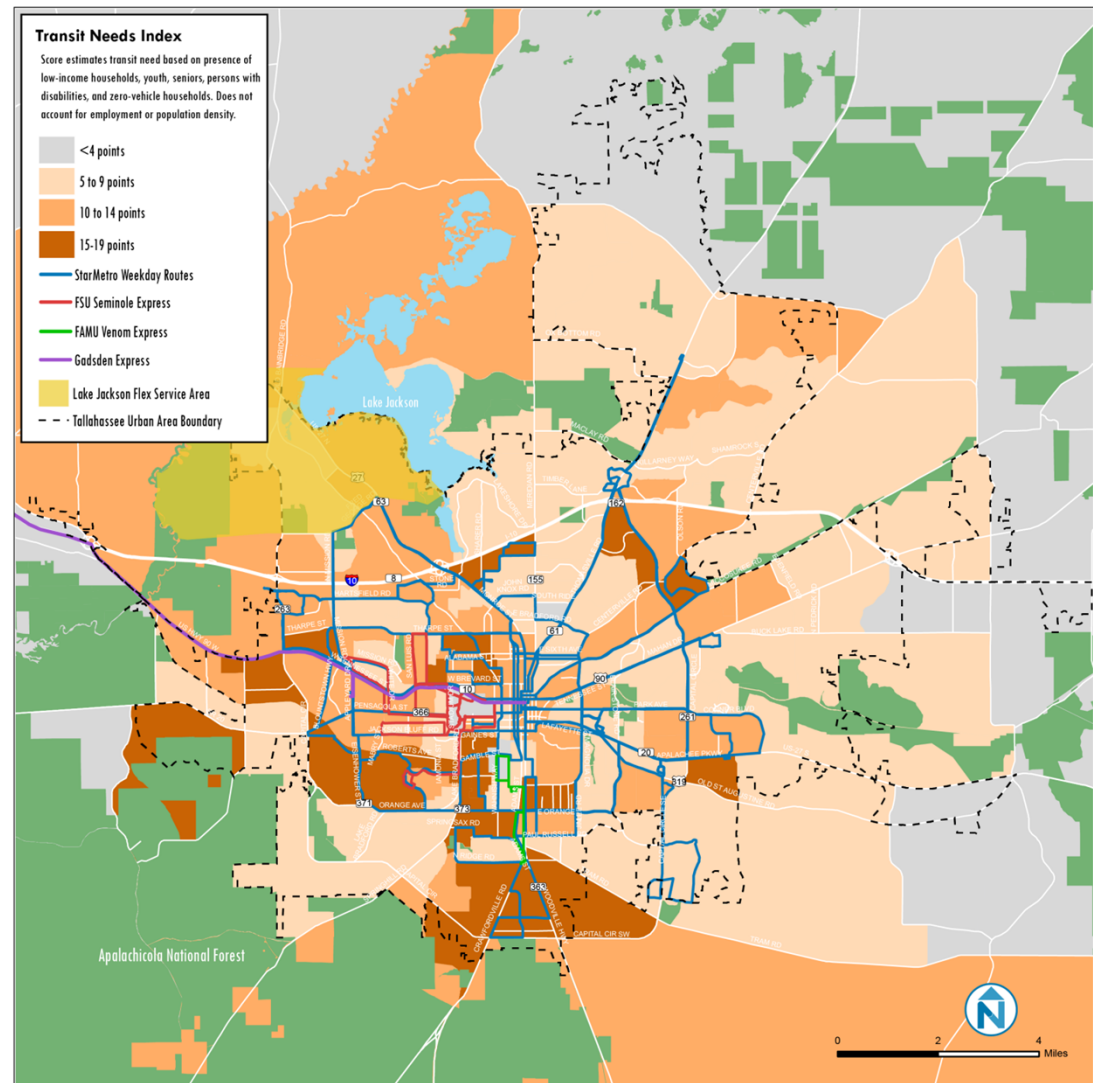
---

- Provides an evaluation of the transit market, existing service characteristics, and system performance
- Identifies needs and areas for improvement
- Required by FDOT to serve as a planning tool to provide consumers with effective and efficient transit service
- A roadmap for growth priorities over the next 10 years

# Market Analysis

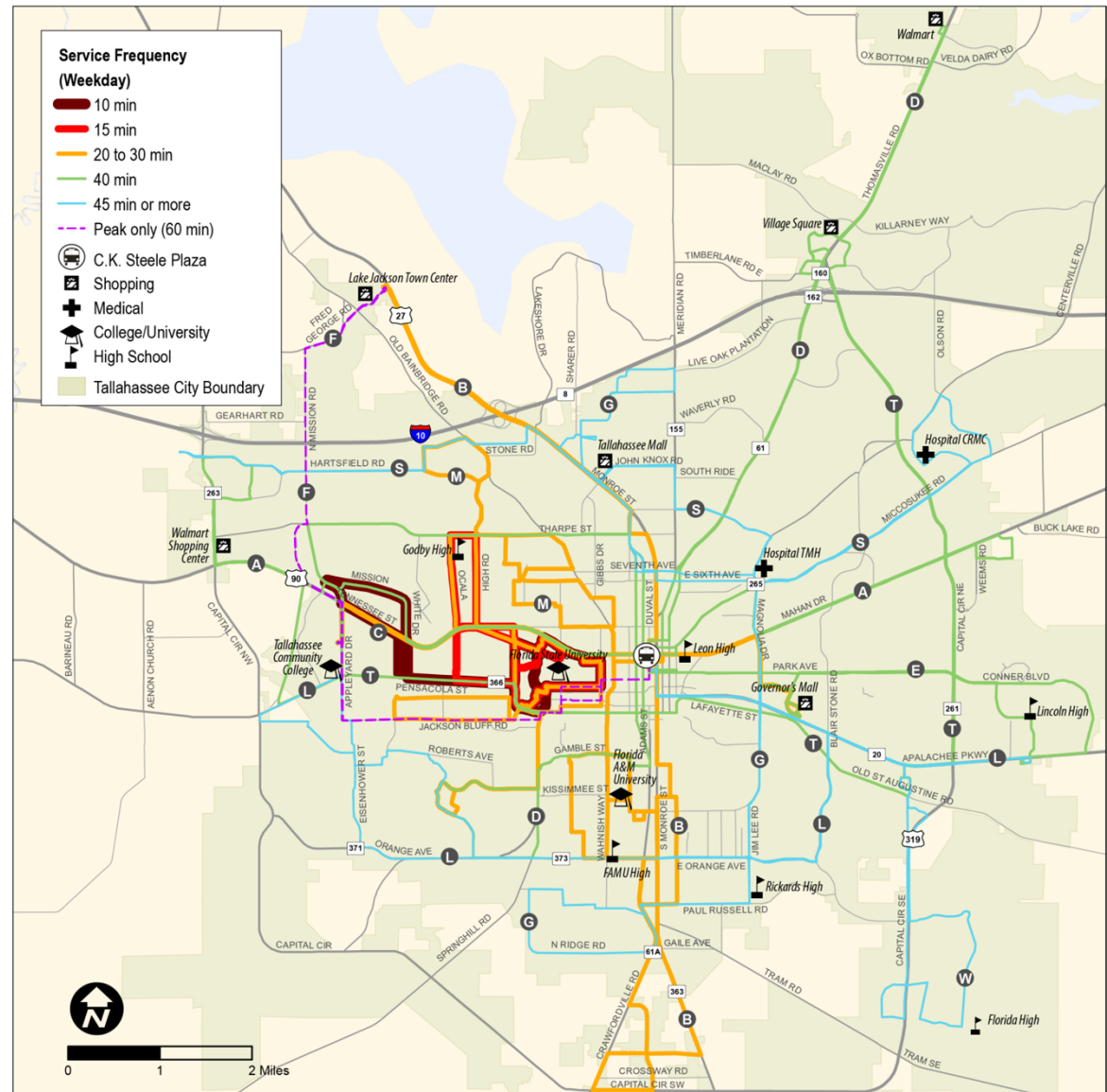
## Transit Need

- An understanding of characteristics that affect transit usage, including:
  - Population Distribution
  - Employment Distribution
  - Major Employers
  - Major Activity Centers
  - Existing Land Use
  - Low-Income Population
  - Median Income
  - Minority Distribution
  - Persons with Disabilities
  - Senior Distribution
  - Youth Distribution
  - Zero-Vehicle Households



# StarMetro Service Frequency

- FSU routes
- Most routes run every 30 to 40 minutes





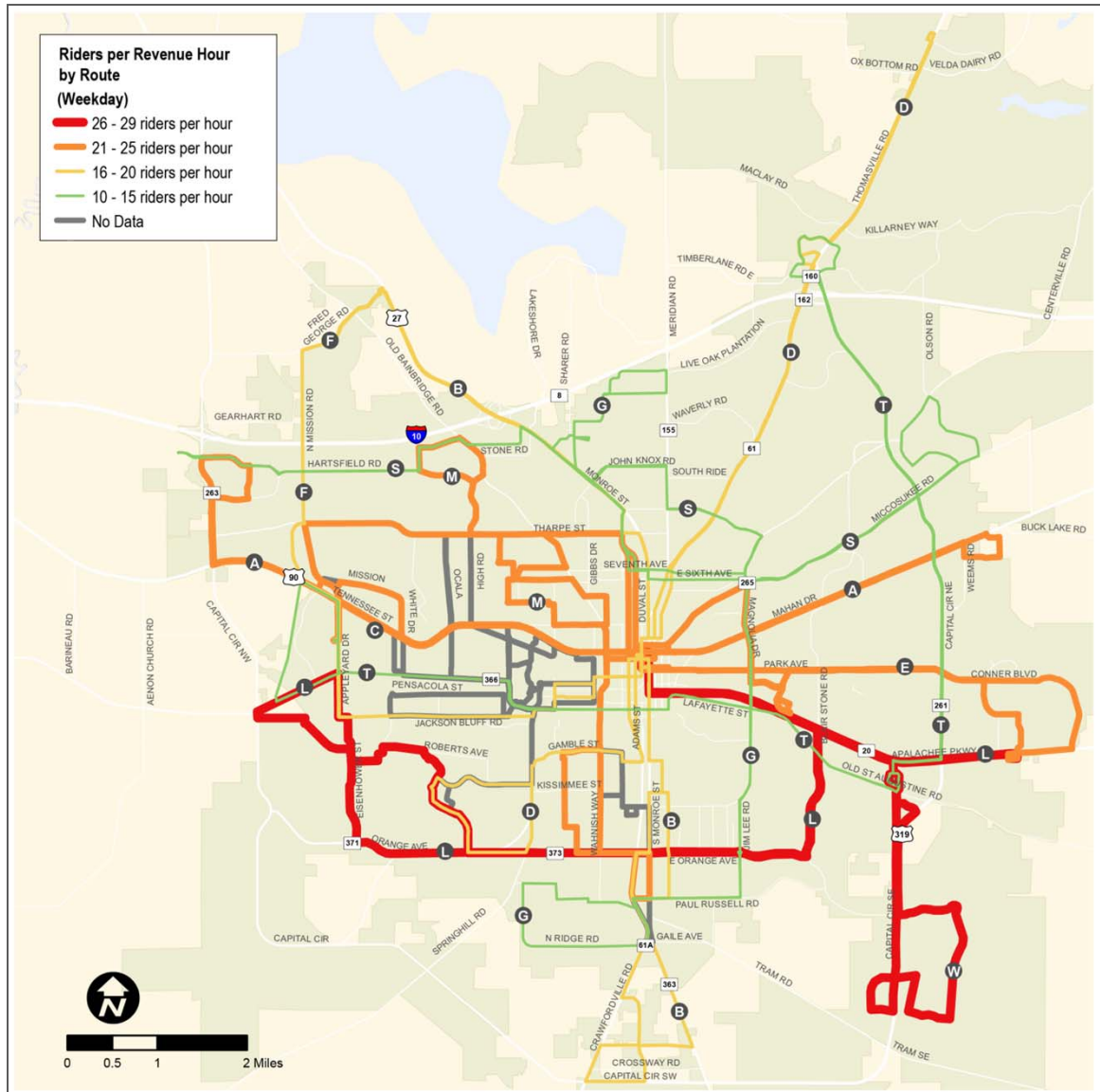
# StarMetro High Ridership Stops

- Downtown
- Near FSU
- Others include:
  - FAMU
  - WalMart
  - FAMU/FSU College of Engineering
  - Governor's Square Mall
  - Seminole Suites Apartments



# StarMetro Riders per Revenue Hour

- Strongest routes
  - south of downtown
  - serving universities



# Additional Findings

---

- StarMetro is capped at the maintenance and operations facility – need to expand to add buses and new routes
- Demand response service has become more cost-effective
- Technology implementation is improving customer service, enhancing convenience, and improving cost effectiveness



# Key Themes from Community Outreach

---

- Focus on StarMetro's core functions
- Service enhancements - reliability, frequency, service span, weekends, travel times
- Serve new markets
- Improve coordination and communication
- Explore funding and regional partnerships
- Identify capital improvements
  - park-and-ride lots, bus stops, amenities, technology
- *Take part in the current StarMetro Survey*

<http://www.starmetrosurvey.com/>

# 10-Year Transit Development Plan: Framework

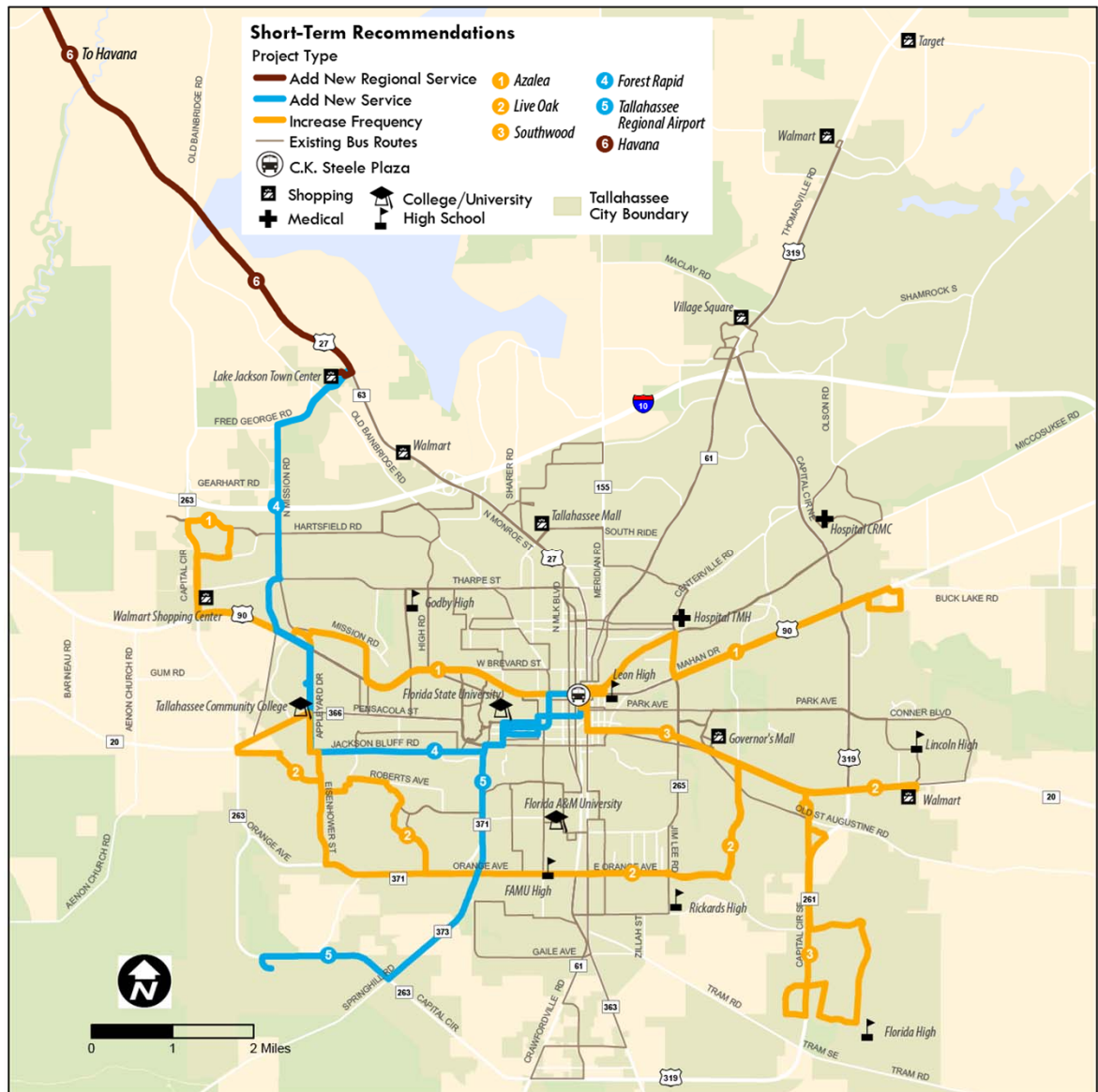
---

- The 10-Year TDP was developed based on:
  - Community outreach
  - Market research
  - Existing operating conditions

# 10-Year Transit Development Plan: Short Term

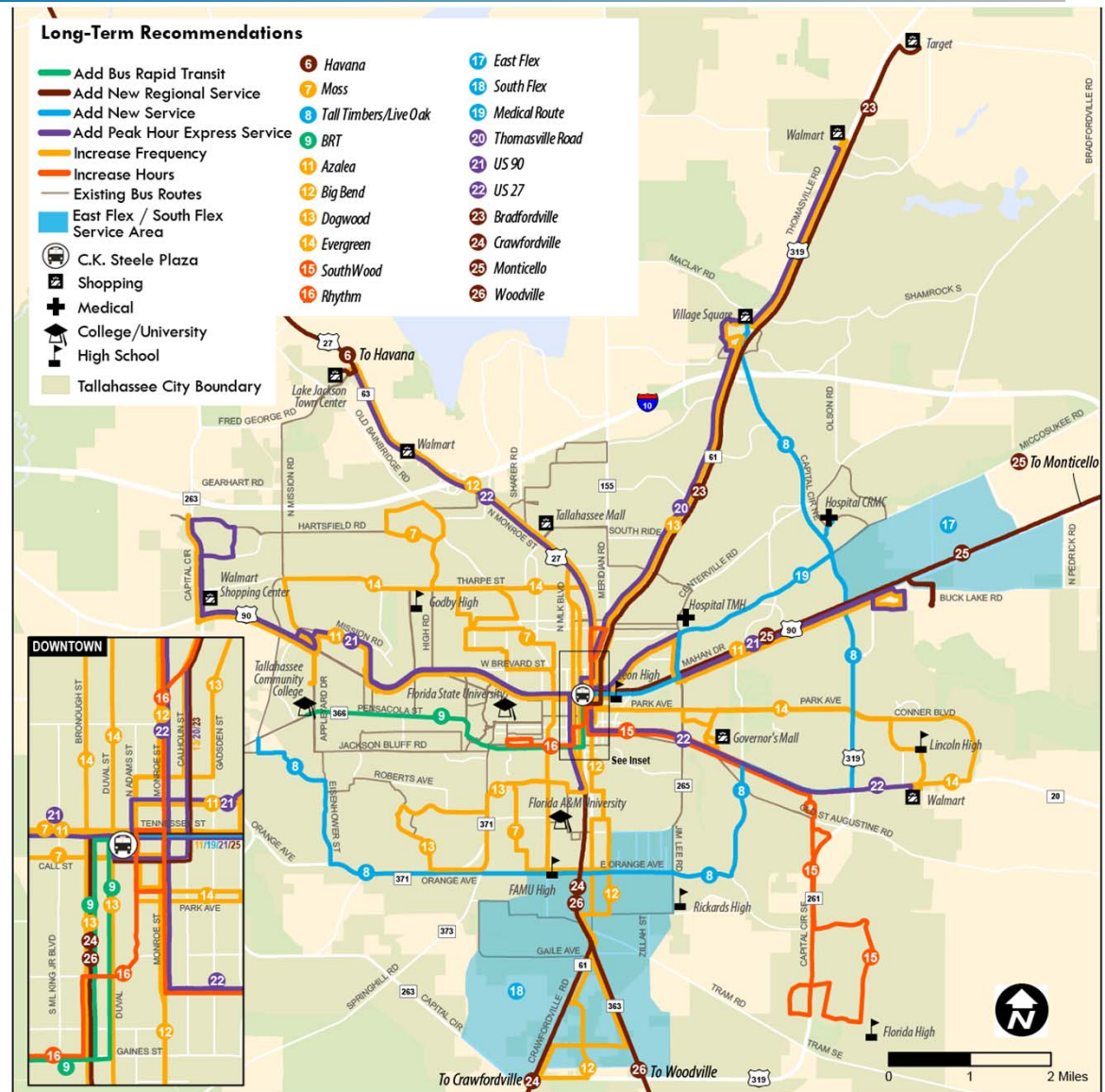
■ Short-term recommendations (2016-2021) include:

- Frequency
- New local service
- New regional service through partnerships with other communities



# 10-Year Transit Development Plan: Long Term

- Long-term recommendations (2022-2026) include:
  - BRT
  - Regional service
  - New local service
  - New flex service
  - New peak hour express service
  - Frequency
  - Service span



# 10-Year Transit Development Plan: Technology

---

- Proposed technology improvements include:
  - Real-time bus location (2015)
  - Mobile trip planner (2015 iPhone; 2016 Android)
  - Fare payment application (2016)
  - Variable message signs (2016)
  - Automatic passenger counters (2017)
  - Stop annunciation (2017)\*
  - Transit signal priority (2018)

*\*Project is currently unfunded*

<http://fsu.transloc.com/>

<http://starmetro.transloc.com/>



# 10-Year Transit Development Plan: Capital

---

- Proposed capital improvements include:
  - Bus stop upgrades (2016-2026)
  - Connection centers (2016-2026)
  - Replacement vehicles (2017-2026)
  - Operations and maintenance facility (2022-2026)
  - C.K. Steele Plaza renovations (2022-2026)
  - Upgraded fareboxes (2022-2026)
  - Expansion and spare vehicles (2022-2026)\*
  - BRT infrastructure (2022-2026)\*
  - Articulated vehicles (2022-2026)\*
  - Park-and-ride lots (2022-2026)\*

*\*Project is currently unfunded*

# 10-Year Transit Development Plan: Planning

---

- Proposed planning projects include:
  - COA and City/Campus Transit Integration Plan (2017)\*
  - AA Environmental Assessment (2018)
  - Facility and Fleet Needs Assessment and Master Plan (2019)\*
  - Regional Fare Policy Analysis (2022-2026)\*

*\*Project is currently unfunded*

## Next Steps

---

- Final report
- Public hearing
- Submission to FDOT
- TDP becomes Appendix to ***Connections 2040 Regional Mobility Plan*** update



**Randy Farwell**  
904-394-3598  
[rfarwell@nelsonnygaard.com](mailto:rfarwell@nelsonnygaard.com)