



# Interstate Master Plan

FPID 42583211201



Preferred Mobility Enhancement Alternatives (PMEA)

## Project Areas

- West – Santa Rosa & Escambia Counties (42 miles)
- Middle – Okaloosa, Walton, Holmes, Washington, & Jackson Counties (118 miles)
- East – Jefferson, Leon, & Gadsden Counties (75 miles)





NORTHWEST FLORIDA

# Interstate Master Plan

FPID 42583211201

## Master Plan Objectives

### **Develop an integrated transportation system that:**

- Is economically efficient
- Is environmentally sensitive
- Accommodates 2040 travel demands
- Identifies and protects future right-of-way needs
- Includes a staging plan that prioritizes corridor improvements and outlines funding strategies
- Is coordinated with other on-going projects

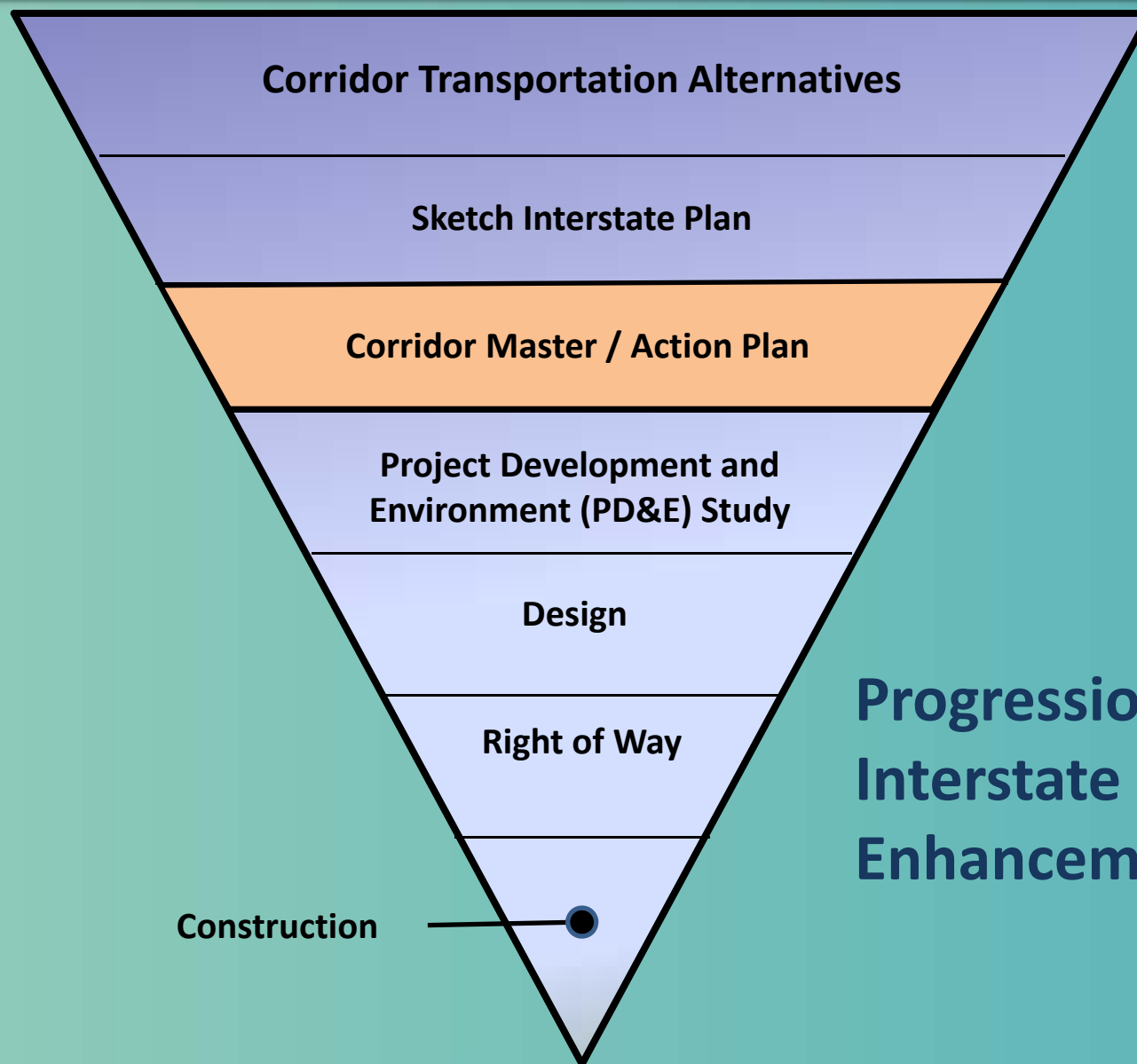




NORTHWEST FLORIDA

# Interstate Master Plan

FPID 42583211201



**Progression for  
Interstate  
Enhancements**





NORTHWEST FLORIDA

# Interstate Master Plan

FPID 42583211201

## Master Plan Schedule and Public Meetings

- CRTPA Technical Advisory Committee (TAC):  
**Tuesday, September 11, 2012**
- CRTPA Citizen's Advisory Committee (CAC):  
**Tuesday, September 11, 2012**
- Gadsden County:  
**Tuesday, September 11, 2012**
- Leon County:  
**Thursday, September 13, 2012**
- Jefferson County:  
**Tuesday, September 18, 2012**
- CRTPA Board  
**Monday, September 24, 2012**





NORTHWEST FLORIDA

# Interstate Master Plan

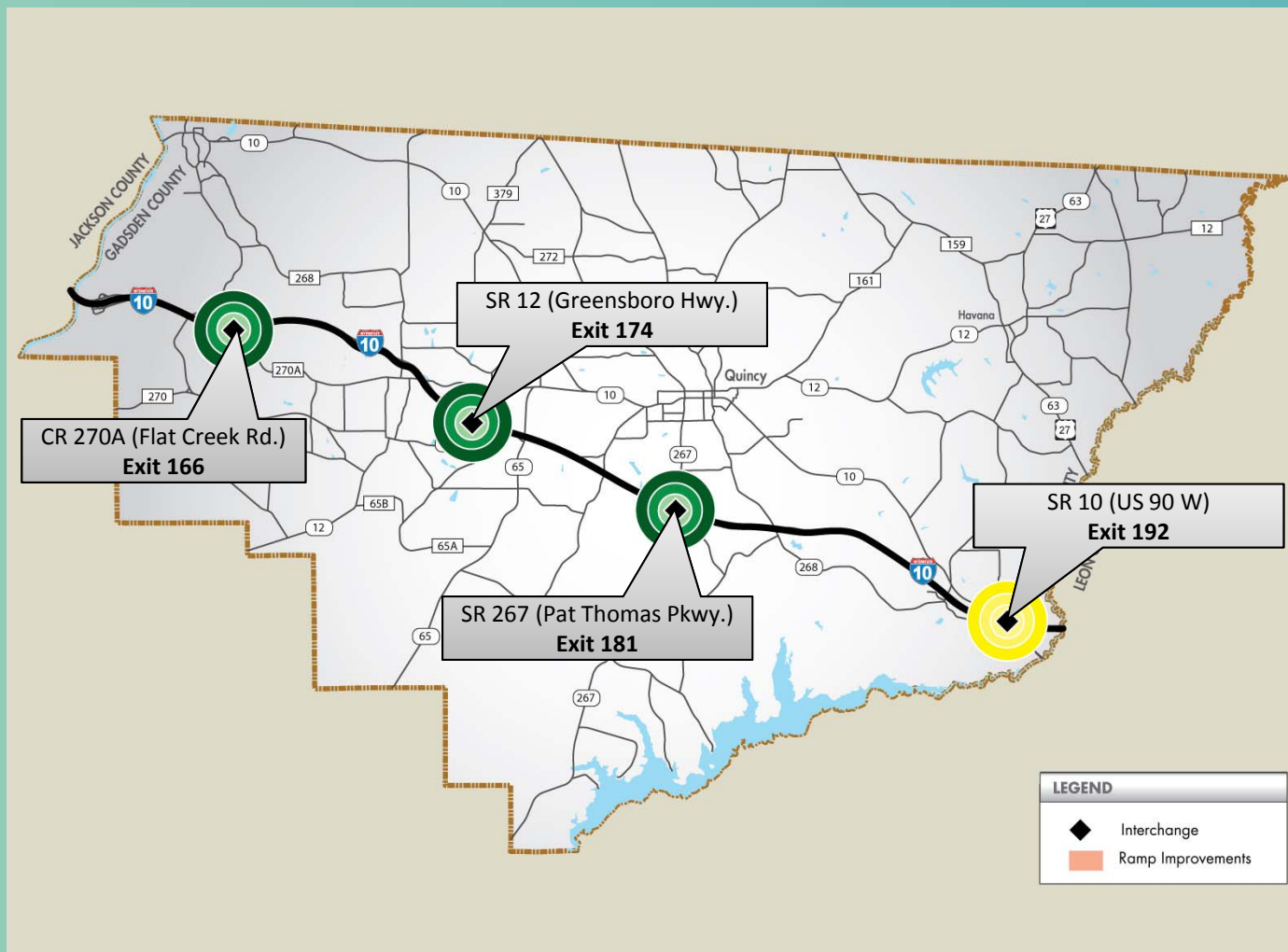
FPID 42583211201

## Existing and Future Transportation Analysis

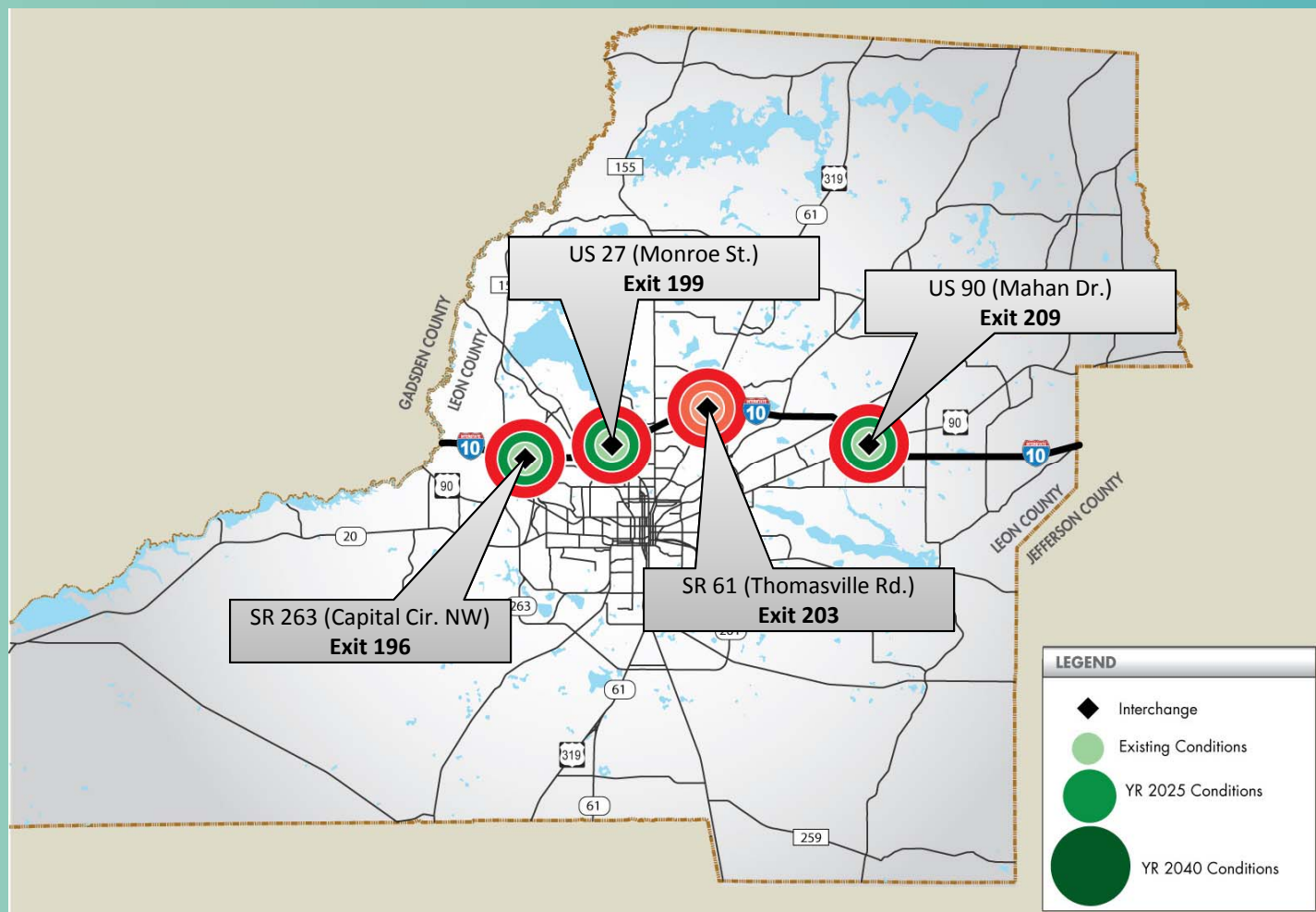




## Gadsden County Future Conditions (Interchanges)

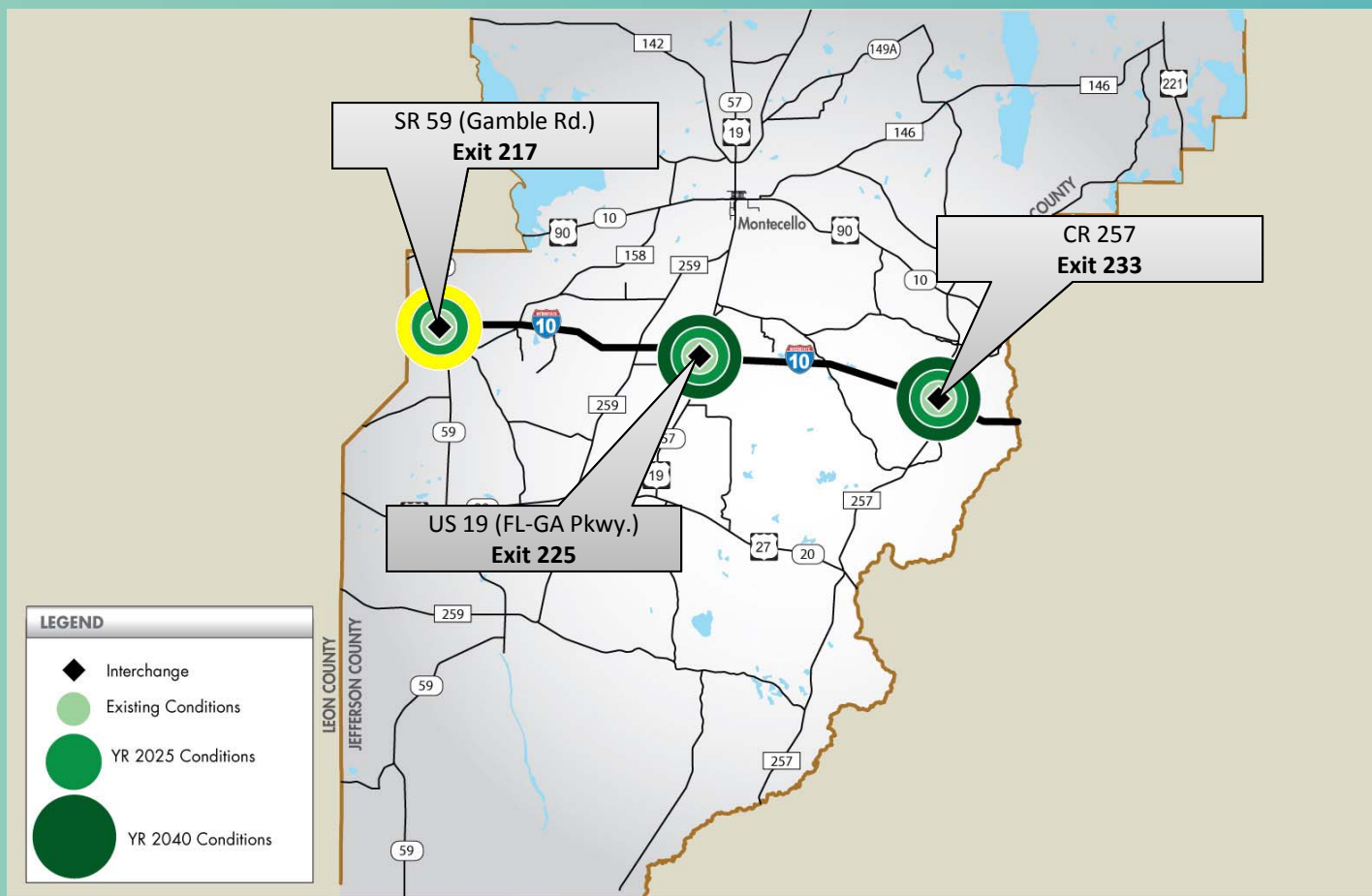


## Leon County Future Conditions (Interchanges)





## Jefferson County Future Conditions (Interchanges)



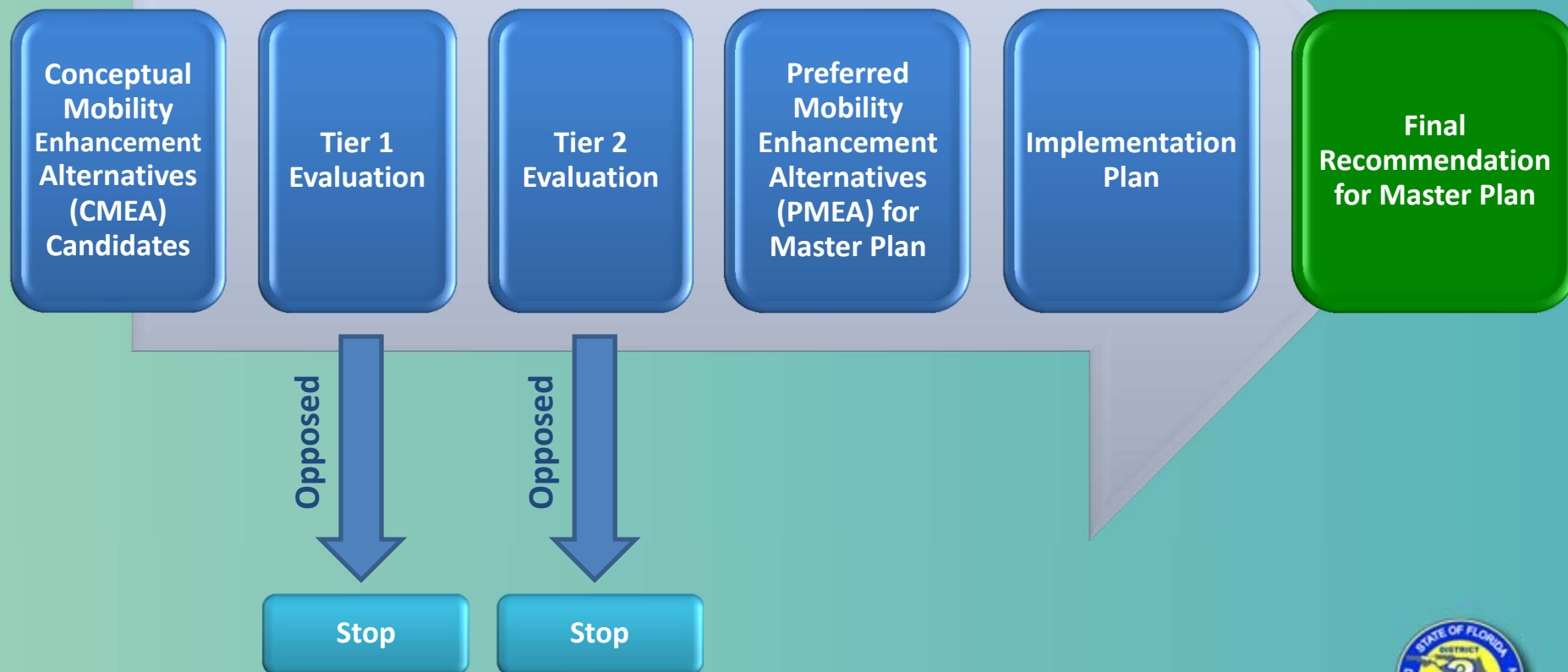


NORTHWEST FLORIDA

# Interstate Master Plan

FPID 42583211201

## TIER SELECTION PROCESS





NORTHWEST FLORIDA

# Interstate Master Plan

## CMEA Alternatives

FPID 42583211201

- 1) No Build
- 2) Intelligent Transportation Systems
- 3) Minor Improvements
- 4) Collector-Distributor Roads
- 5) Frontage Roads
- 6) Separate High-Occupancy Vehicle Lanes
- 7) System to System Express Lanes
- 8) Reversible Lanes Only
- 9) New General Purpose Lanes
- 10) Localized Express Lanes
- 11) Fixed Guide way Transit Only
- 12) Managed Lane
- 13) Dedicated Truck Lane
- 14) New Interchange (Welaunee)
- 15) New Interchange (Meridian)
- 16) Multimodal Strategies





NORTHWEST FLORIDA

# Interstate Master Plan

## Tier 1 Evaluation

FPID 42583211201

### Tier 1 Evaluation Summary

I-10 Master Plan Tier 1 Corridor Evaluation Objectives and Measures of Effectiveness		Recommended for Tier 2
CMEA	Description	
1	No Build	✓
2	Intelligent Transportation Systems Expansion	✓
3	Minor Improvements	✓
12	Managed Lane	✓
13	Dedicated Truck Lane	✓
14	New Interchange (Welaunee)	✓
15	New Interchange (Meridian)	✓
16	Multimodal Strategies	✓





## Tier 2 Evaluation Summary

I-10 Master Plan Tier 2 Corridor Evaluation Objectives and Measures of Effectiveness		Recommended for PMEA
CMEA	Description	
1	No Build	✓
2	Intelligent Transportation Systems Expansion	✓
3	Minor Improvements	✓
14	New Interchange (Welaunee)	✓
16	Multimodal Strategies	✓







NORTHWEST FLORIDA

# Interstate Master Plan

FPID 42583211201

CMEA  
Candidates

Tier 1  
Evaluation

Tier 2  
Evaluation

PMEA for  
Master Plan

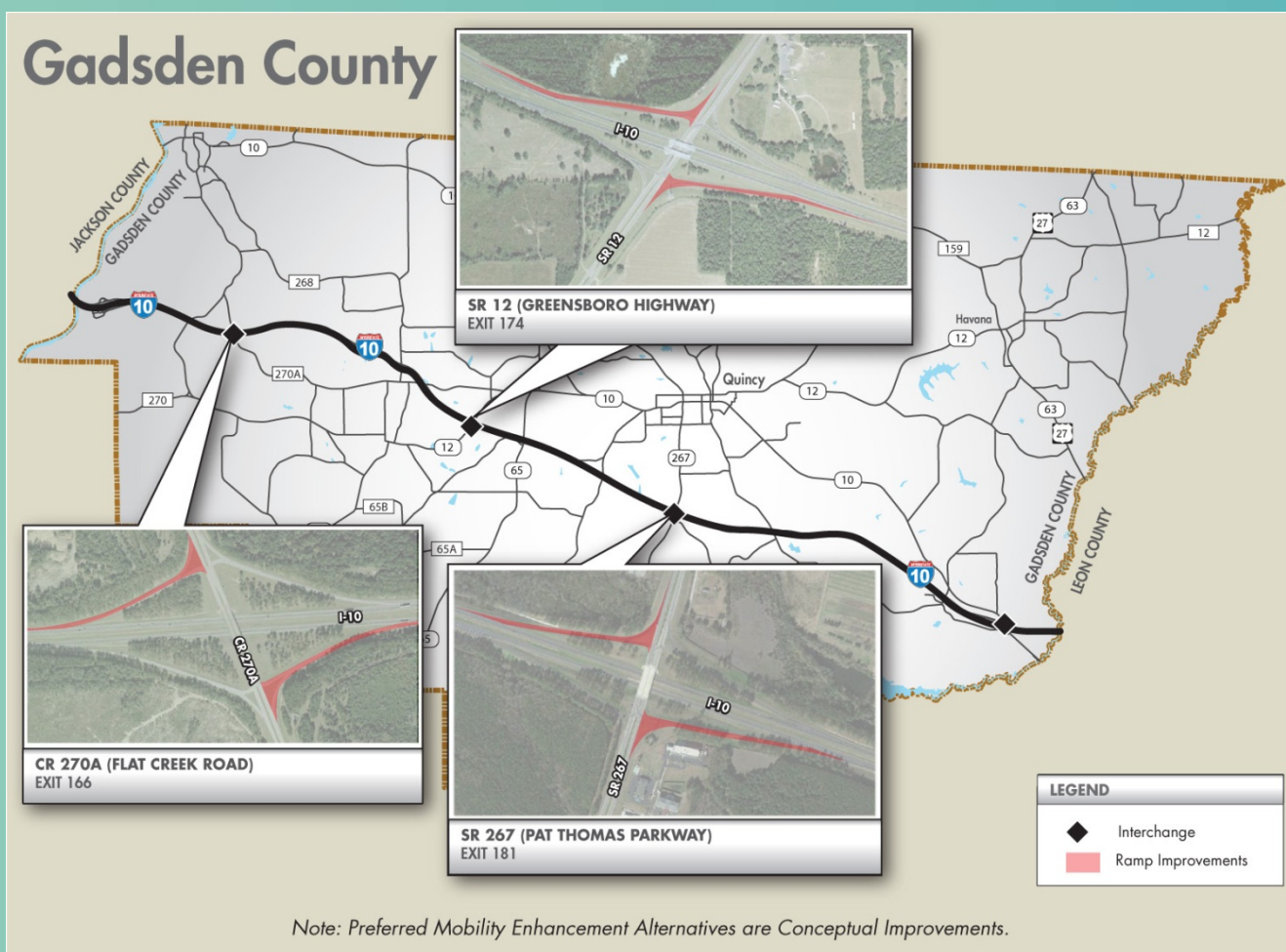
Implementation  
Plan

Final  
Recommendation  
for Master Plan

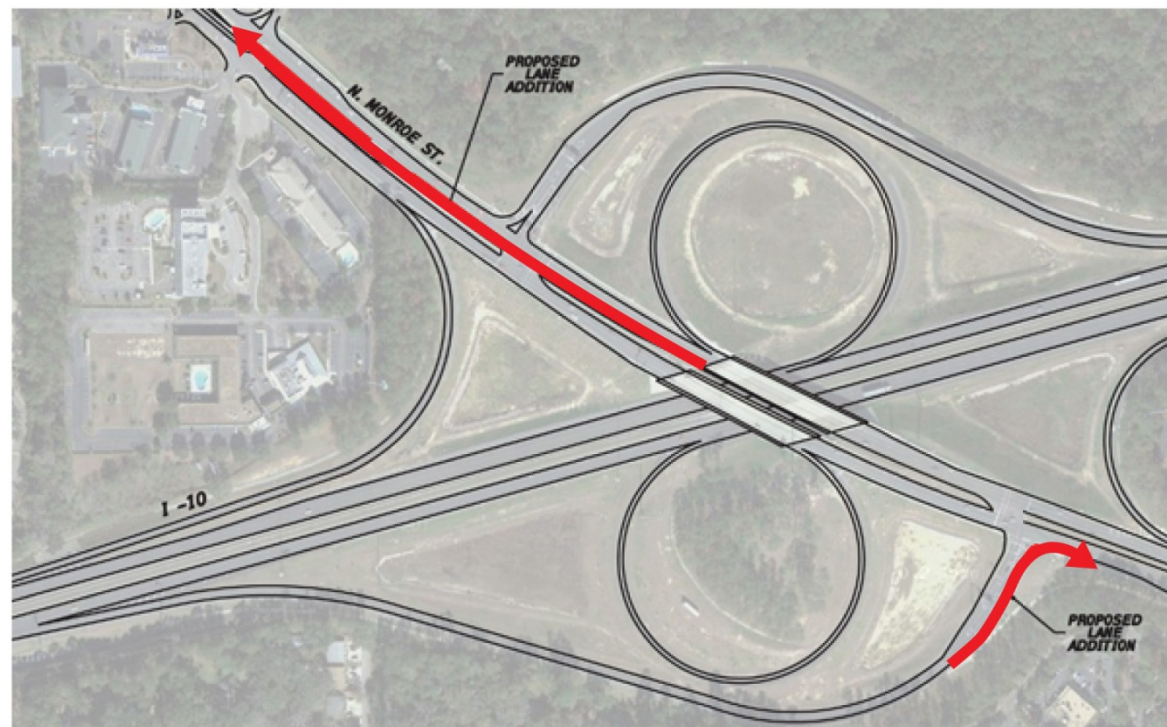
## Preferred Mobility Enhancement Alternatives (PMEA)



## Gadsden County Future Conditions (Interchanges)



## Leon County Future Conditions (Interchanges)



**US 27 (MONROE STREET)**  
**EXIT 199**



## Leon County Future Conditions (Interchanges)



**SR 61 (THOMASVILLE ROAD)**  
**EXIT 203**



NORTHWEST FLORIDA

# Interstate Master Plan

FPID 42583211201

## Leon County Future Conditions (Interchanges)

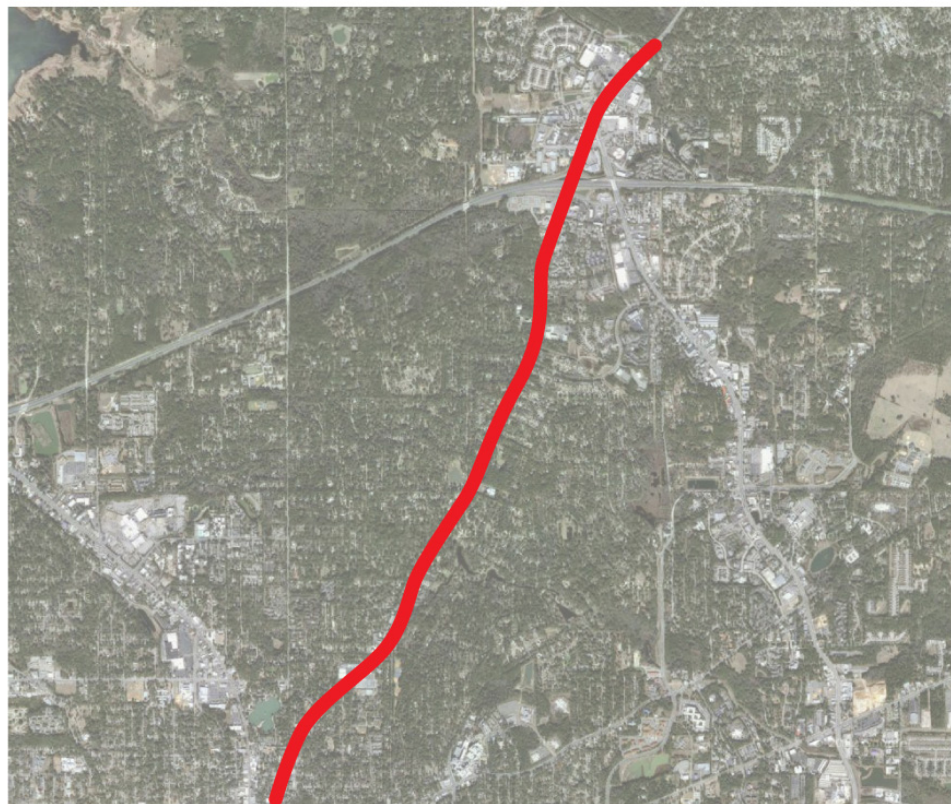
Leon



US 27 (MONROE)  
EXIT 199



SR 263 (CAPITOL)  
EXIT 196



**SR 61 (THOMASVILLE ROAD)**  
**CORRIDOR TRANSIT STUDY**

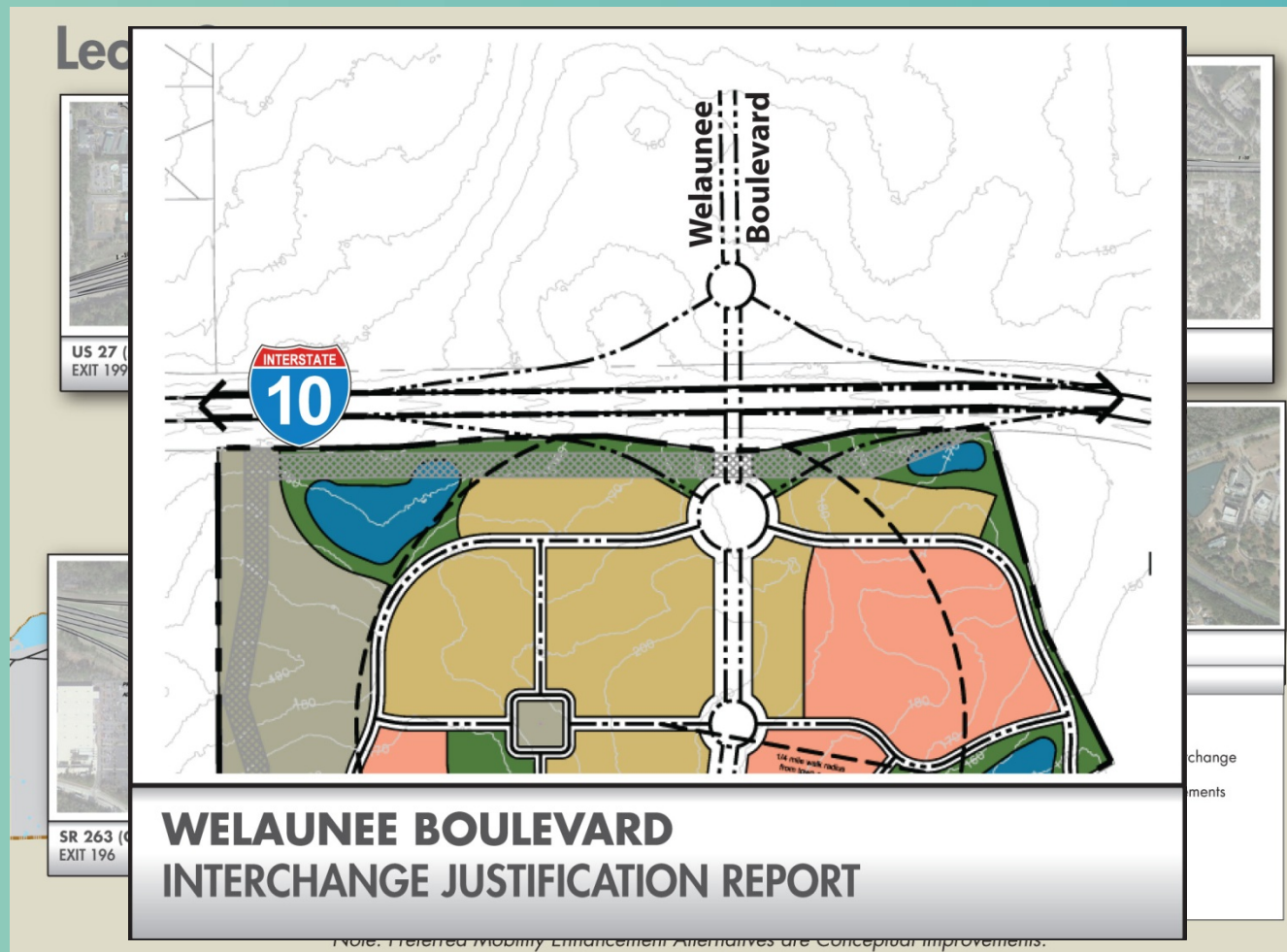


ge  
Interchange  
provements





## Leon County Future Conditions (Interchanges)



Source: Welaunee PUD Critical Area Plan (YR 2002)

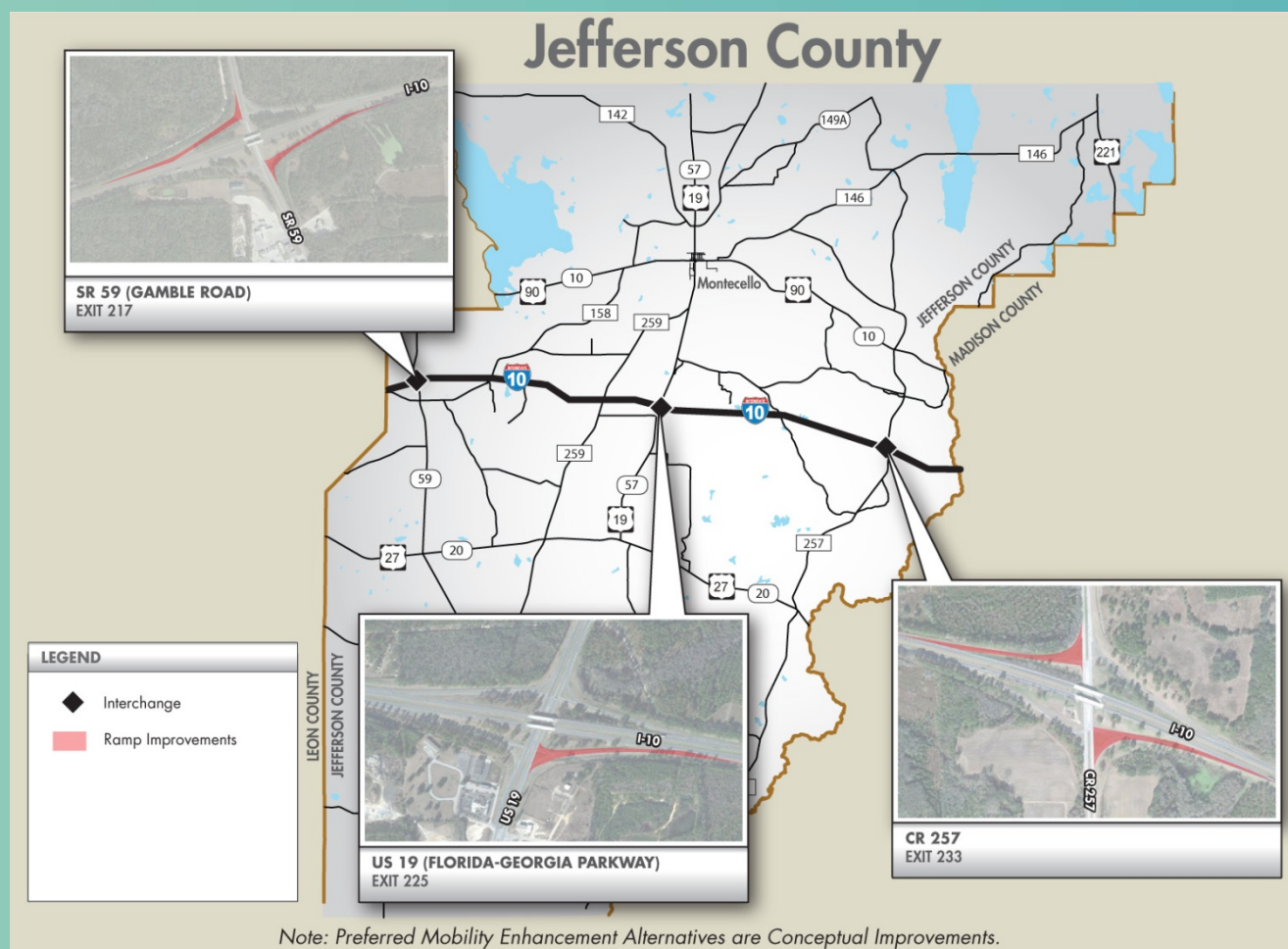
## Leon County Future Conditions (Interchanges)



**US 90 (MAHAN DRIVE)  
EXIT 209**

*Note: Preferred Mobility Enhancement Alternatives are Conceptual Improvements.*

## Jefferson County Future Conditions (Interchanges)







NORTHWEST FLORIDA

# Interstate Master Plan

FPID 42583211201

## Upcoming FDOT Projects on I-10:

- Item #222593  
Interchange PD&E Re-evaluations at  
Capital Circle NE and Thomasville Road
- Item #406585  
PD&E Study on I-10  
SR 261 (Capital Circle NE) to U.S. 90 (Mahan) – 5.6 miles
- Item #222530-3  
PD&E Study on I-10  
West of U.S. 90 to Ochlocknee River Bridge – 2.0 miles





NORTHWEST FLORIDA

# Interstate Master Plan

FPID 42583211201

## Other Recommendations for Master Plan Preferred Mobility Enhancement Alternatives (PMEA)





## Interstate Lighting:

- Exit 166, CR 270-A (Flat Creek Road)
- Exit 174, SR 12 (Greensboro Highway)
- Exit 217, SR 59 (Gamble Road)

## Recommendation:

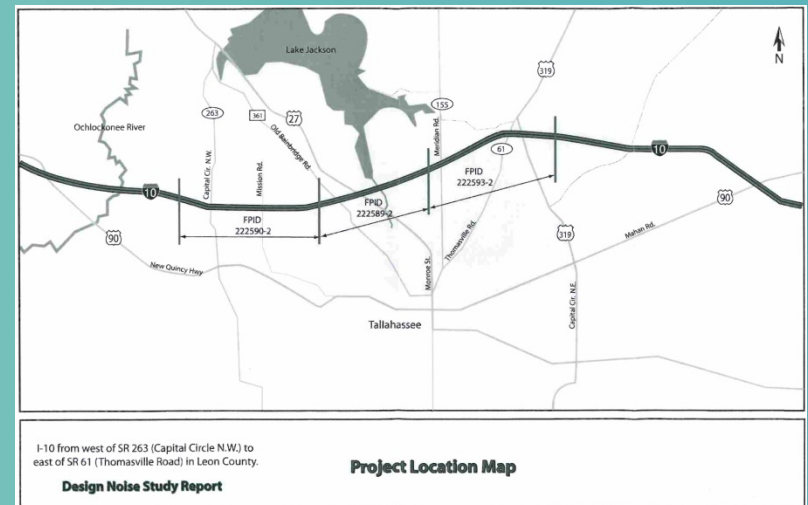
Preparation of Lighting  
Justification Reports



## Interstate Noise Abatement:

- Historical Noise Study (2005)
- Evaluated Noise Impacts
- Potential Impacts along Interstate

**Recommendation:**  
Re-evaluate noise impacts  
within study area.





NORTHWEST FLORIDA

# Interstate Master Plan

FPID 42583211201

## Preferred Mobility Enhancement Alternatives Summary Suggested Guardrail Locations

Bridge ID	Facility Carried	County
500102.....	CR 159.....	Gadsden
500099.....	CR 268.....	Gadsden
500100.....	SR 267 .....	Gadsden
500090.....	CR 274.....	Gadsden
500091.....	SR 65 .....	Gadsden
500092.....	CR 270A .....	Gadsden
550032.....	CR 348.....	Leon
550031.....	CR 154.....	Leon
540042.....	Turkey Scratch Road.....	Jefferson
540910.....	CR 259.....	Jefferson
540047.....	CR 158.....	Jefferson





NORTHWEST FLORIDA

# Interstate Master Plan

FPID 42583211201

CMEA  
Candidates

Tier 1  
Evaluation

Tier 2  
Evaluation

PMEA for  
Master Plan

Implementation  
Plan

Final  
Recommendation  
for Master Plan

## Final Recommendation for Master Plan





NORTHWEST FLORIDA

# Interstate Master Plan

FPID 42583211201

## Contact Information

### **Ray Kirkland**

#### *Project Manager*

Florida Department of Transportation  
District 3 Planning Office  
1074 Hwy 90, Chipley, FL 32428  
(850) 415-9590  
email: [ray.kirkland@dot.state.fl.us](mailto:ray.kirkland@dot.state.fl.us)

### **Dave Mulholland**

#### *Consultant Project Manager*

GMB Engineers & Planners, Inc.  
(407) 898-5424  
email: [dmulholland@gmb.cc](mailto:dmulholland@gmb.cc)

### **Ian Satter**

#### *District Public Information Director*

Florida Department of Transportation  
District 3 Public Involvement Office  
1074 Hwy 90, Chipley, FL 32428  
1-888-638-0250 Ext. 205  
email: [ian.satter@dot.state.fl.us](mailto:ian.satter@dot.state.fl.us)

### **Richard Barr**

#### *Public Involvement and Design Traffic*

Kimley-Horn and Associates, Inc.  
(850) 553-3500  
email: [richard.barr@kimley-horn.com](mailto:richard.barr@kimley-horn.com)

