



CONNECTING PEOPLE AND PLACES

Capital City^{to the} Sea *Trails*

Project Status Update

Capital City^{to}the Sea Trails

CONNECTING PEOPLE AND PLACES



Goals of this Presentation

- Project status update
- Discussion and approval of evaluation criteria
- Input through comment form

Capital City^{to}the Sea Trails

CONNECTING PEOPLE AND PLACES



Agenda

- **What has been accomplished**
 - Data collection and analysis
 - Review of existing plans and studies
 - Needs and Benefits analysis
 - Draft Guiding principles and evaluation criteria
 - Discussion of the proposed evaluation criteria
 - CTRPA Committee Action
 - Public Participation
- **What is currently underway**
 - Identification of corridors
 - Assessment of alternatives
- **Next Steps**
 - Public Workshops
 - PD&E/NEPA and Evaluation of Alternatives

Capital City^{to}the Sea Trails

CONNECTING PEOPLE AND PLACES



Data Collection and Analysis

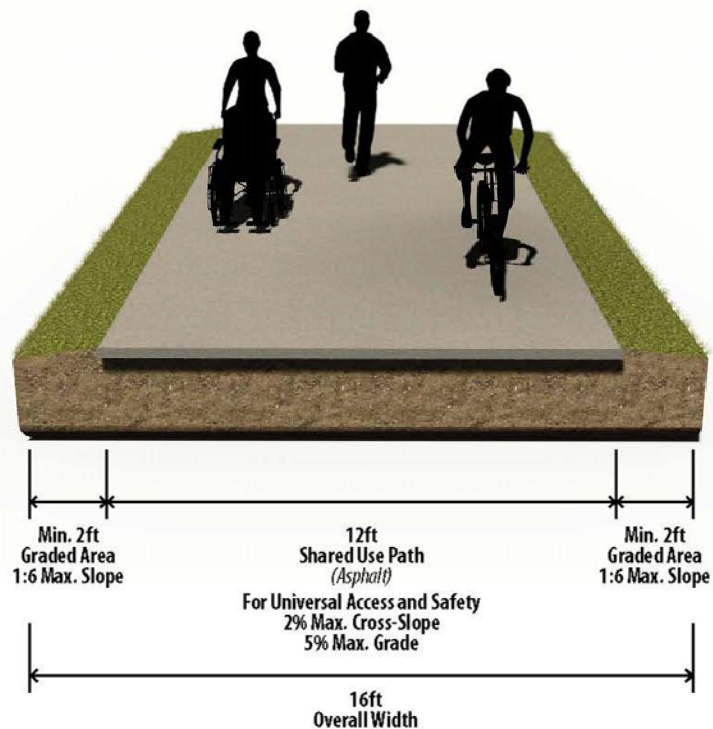
- **Transportation**
 - Existing trails
 - Public transportation routes and stops
 - Roadway network
- **Environment**
 - Critical habitats
 - Wetlands
 - Springs
 - Flood zones
 - Managed areas
- **Demographics**
 - Population density
 - Commute to work statistics
 - Income and employment statistics
- **Social**
 - Population centers
 - Key destinations
 - Community features
- **Other considerations**
 - Best Management Practices
 - Maintenance
 - Potential user conflicts
 - Land Use
 - Supporting infrastructure
 - Bicycle Lanes
 - Sidewalks
 - Signage

Capital City^{to}the Sea Trails

CONNECTING PEOPLE AND PLACES



Design Standards

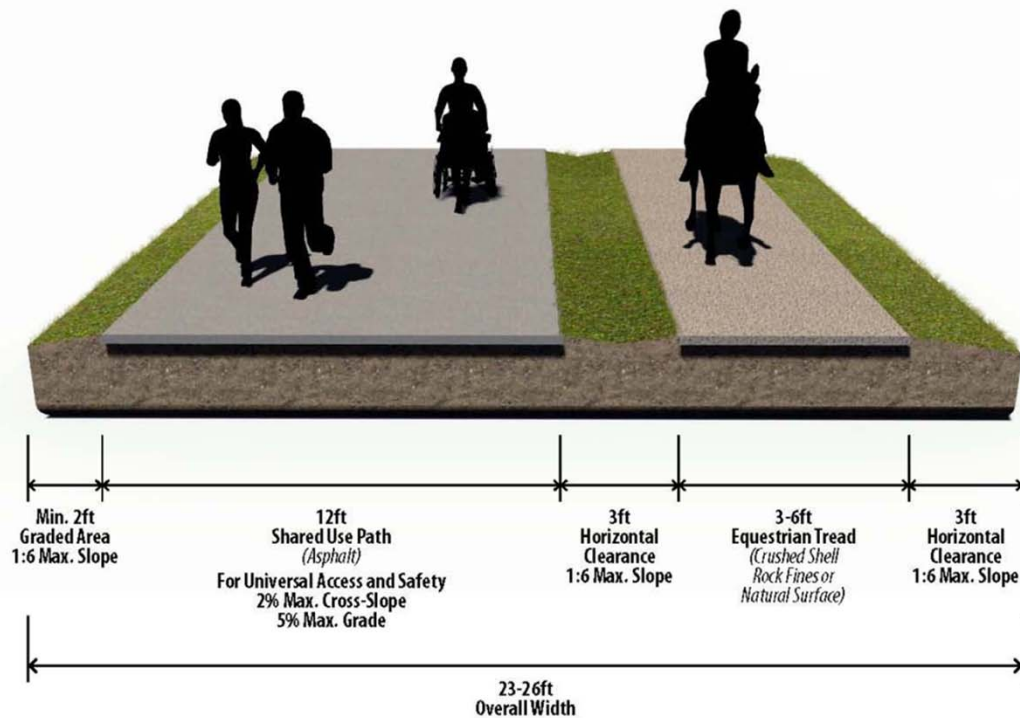


Capital City^{to}the Sea Trails

CONNECTING PEOPLE AND PLACES



Design Standards

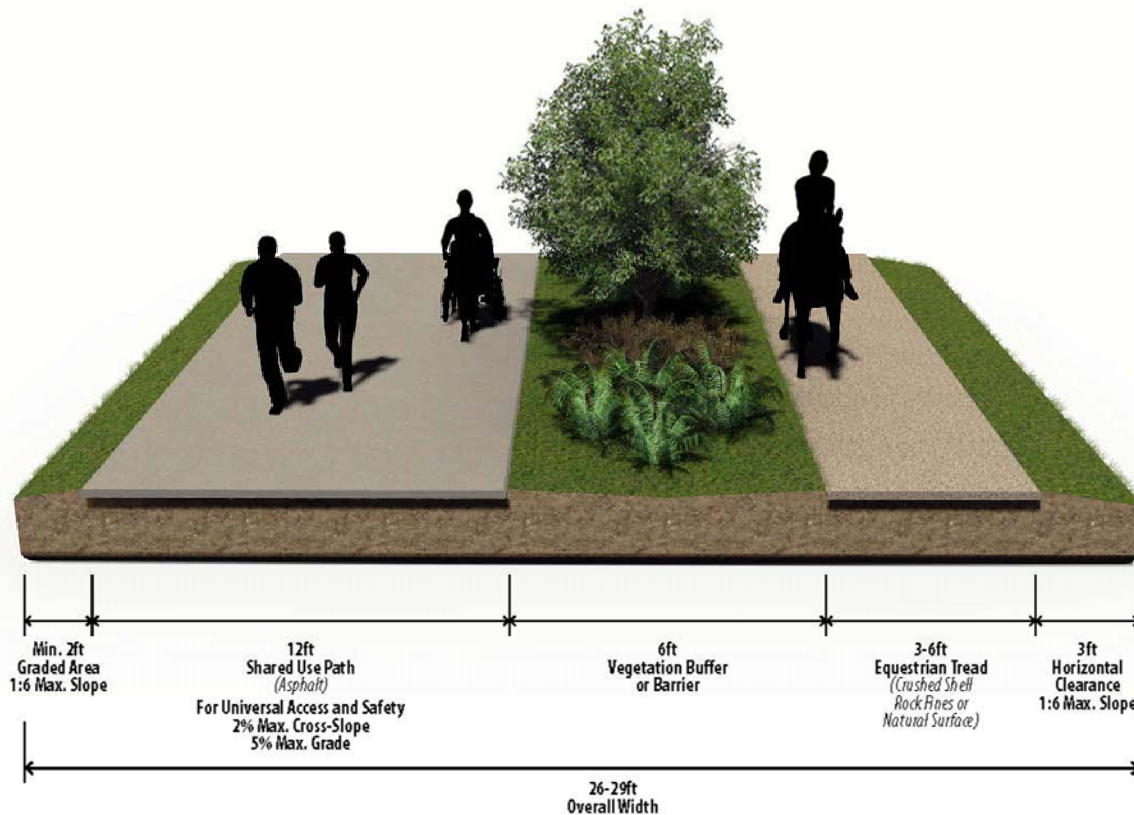


Capital City^{to}the Sea Trails

CONNECTING PEOPLE AND PLACES



Design Standards



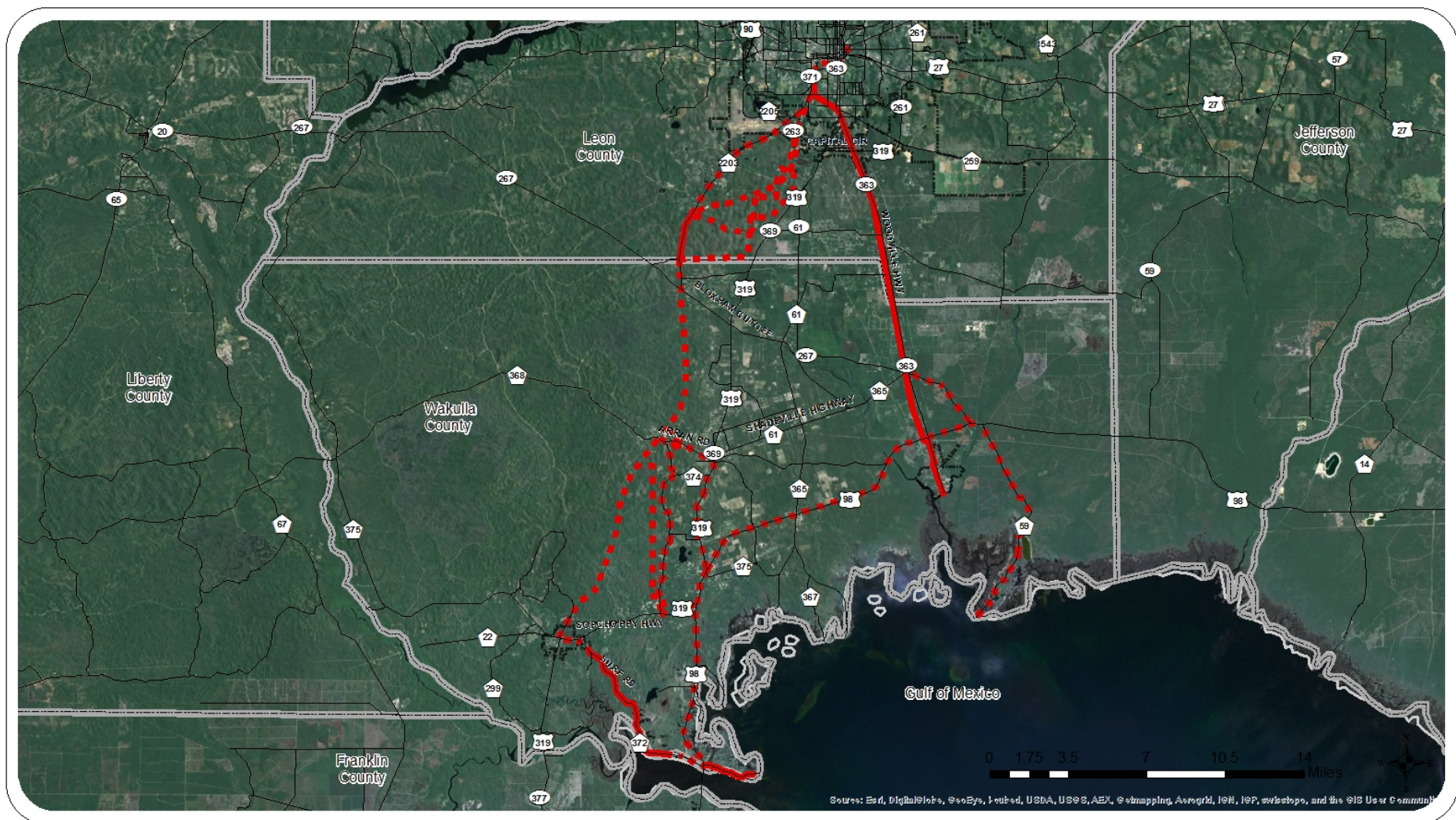
Capital City^{to}the Sea Trails

CONNECTING PEOPLE AND PLACES

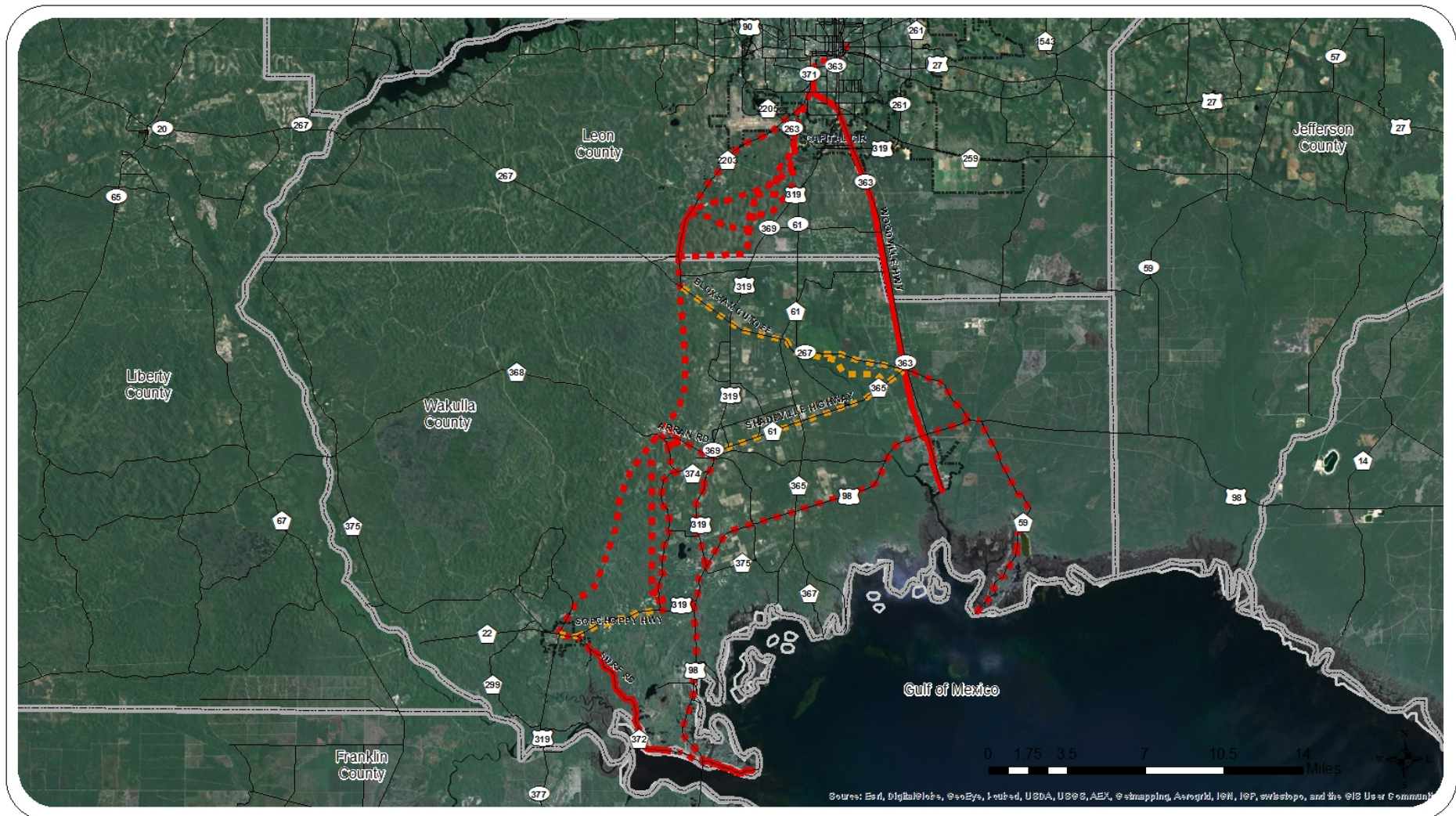


Trail Classifications

Trail Classes		Class 1	Class 2	Class 3
Characteristics	Role	Serve as network spines: These are major trail segments that other trail segments build off of to form a network	Serve as trail linkages: These are trail segments that provide connections between Class 1 Trails	Serve as spur trails: These trails provide linkages from Class 1 and Class 2 Trails to specific destinations that are not along the primary trail network
	Connections	Connect two or more communities	Connect one or two communities to a Class 1 Trail	Connect Class 1 and Class 2 Trails to specific destinations
	Distance	Are greater than 10 miles in length	Range from 5 to 10 miles in length	Are less than 5 miles in length



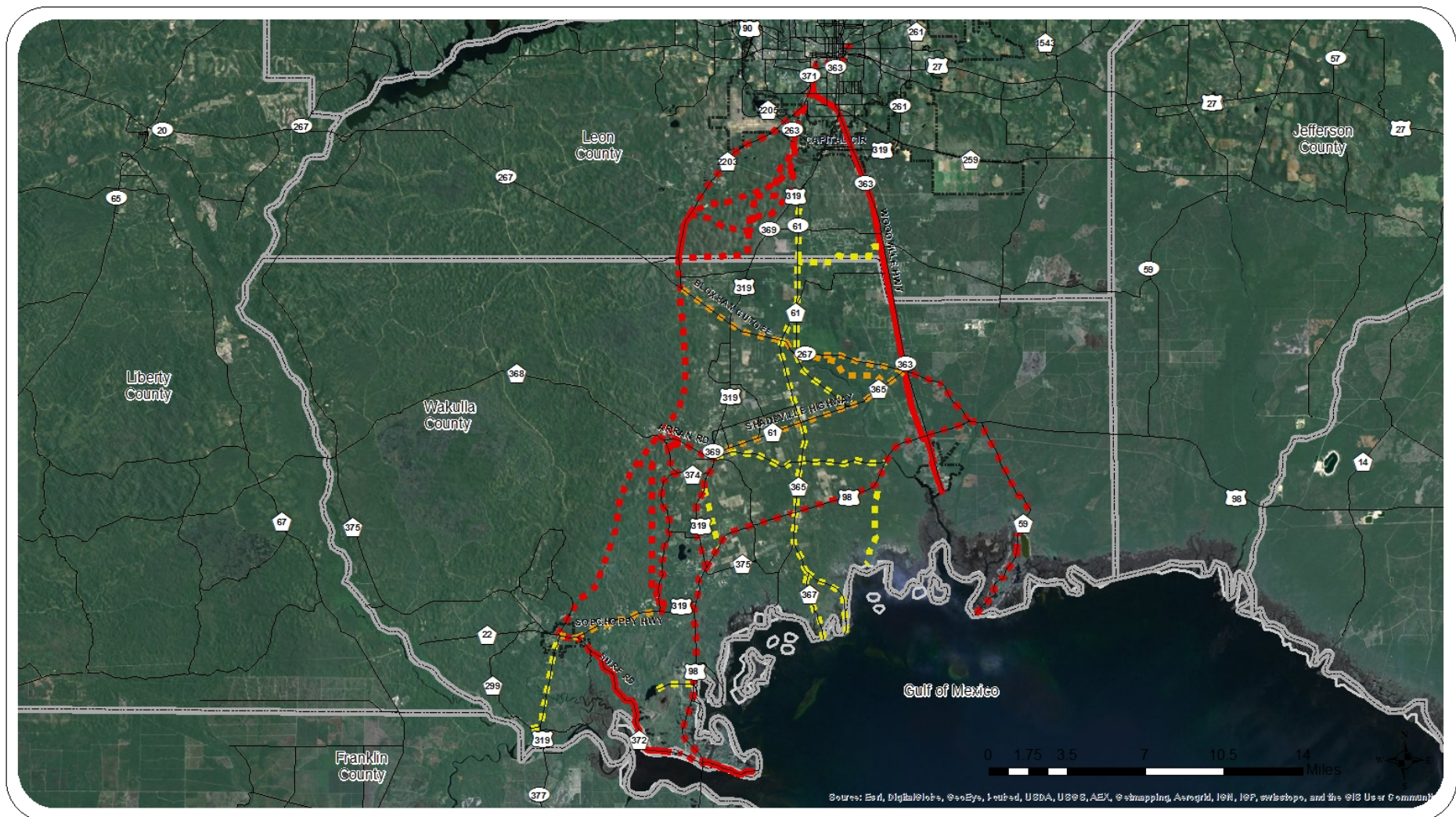
Class I Trail Alternatives Based on Public Input



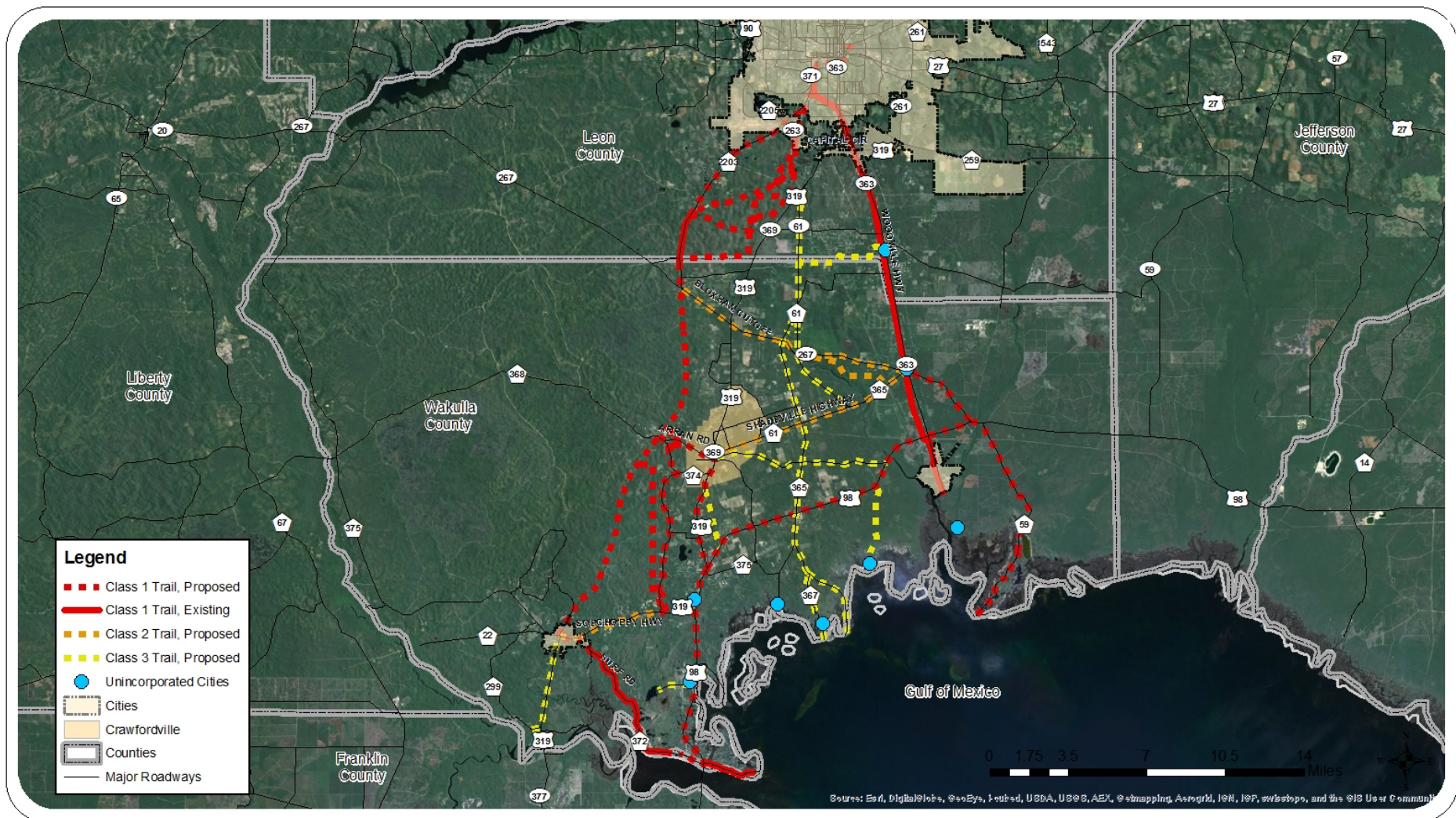
 Kimley-Horn
and Associates, Inc.



Class I and II Trail Alternatives Based on Public Input



Class I, II, and III Trail Alternatives Based on Public Input

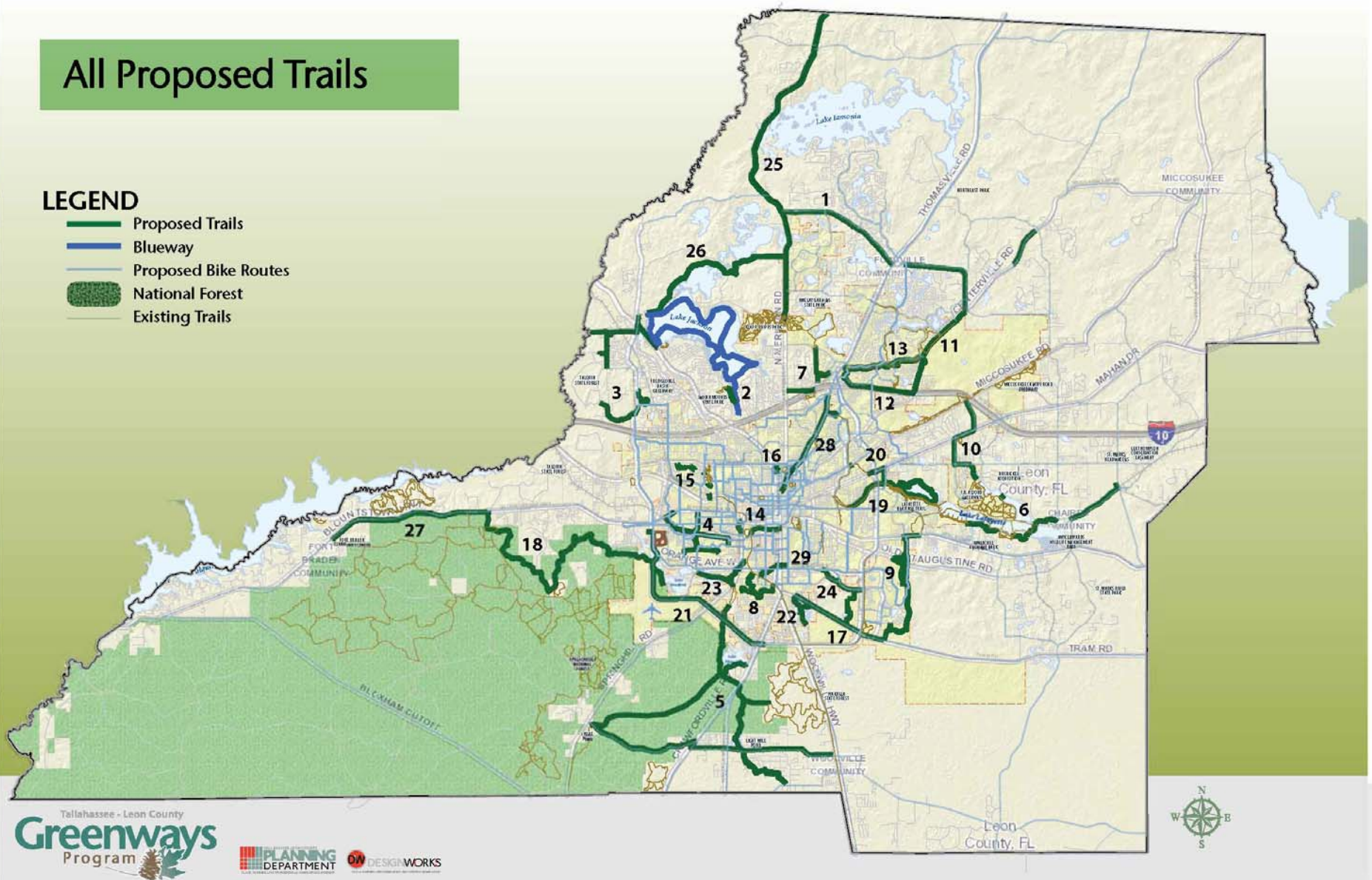


Conceptual CC2ST Trail Network Based on Public Input

All Proposed Trails

LEGEND

- Proposed Trails
- Blueway
- Proposed Bike Routes
- National Forest
- Existing Trails



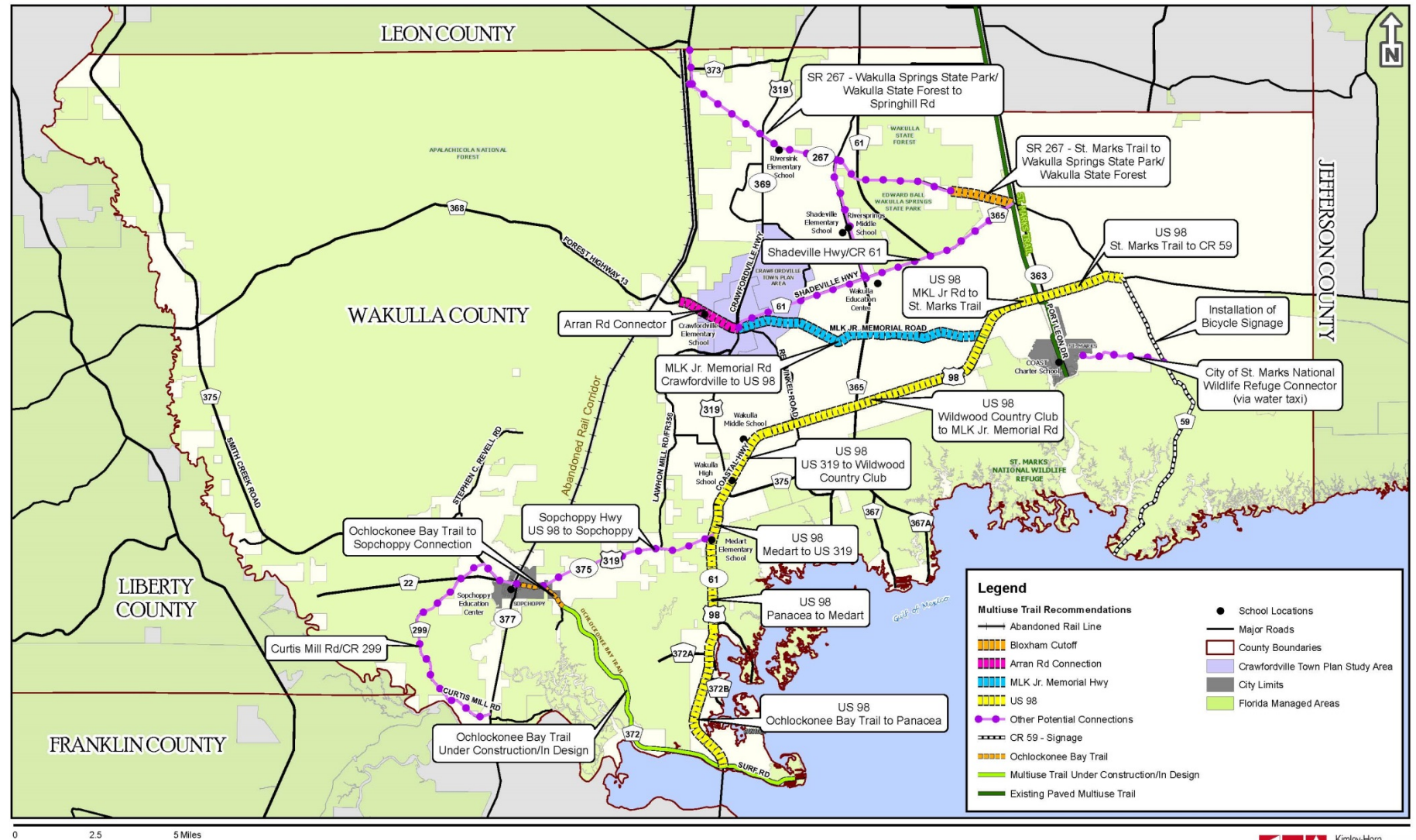
Tallahassee - Leon County
Greenways
Program

PLANNING
DEPARTMENT

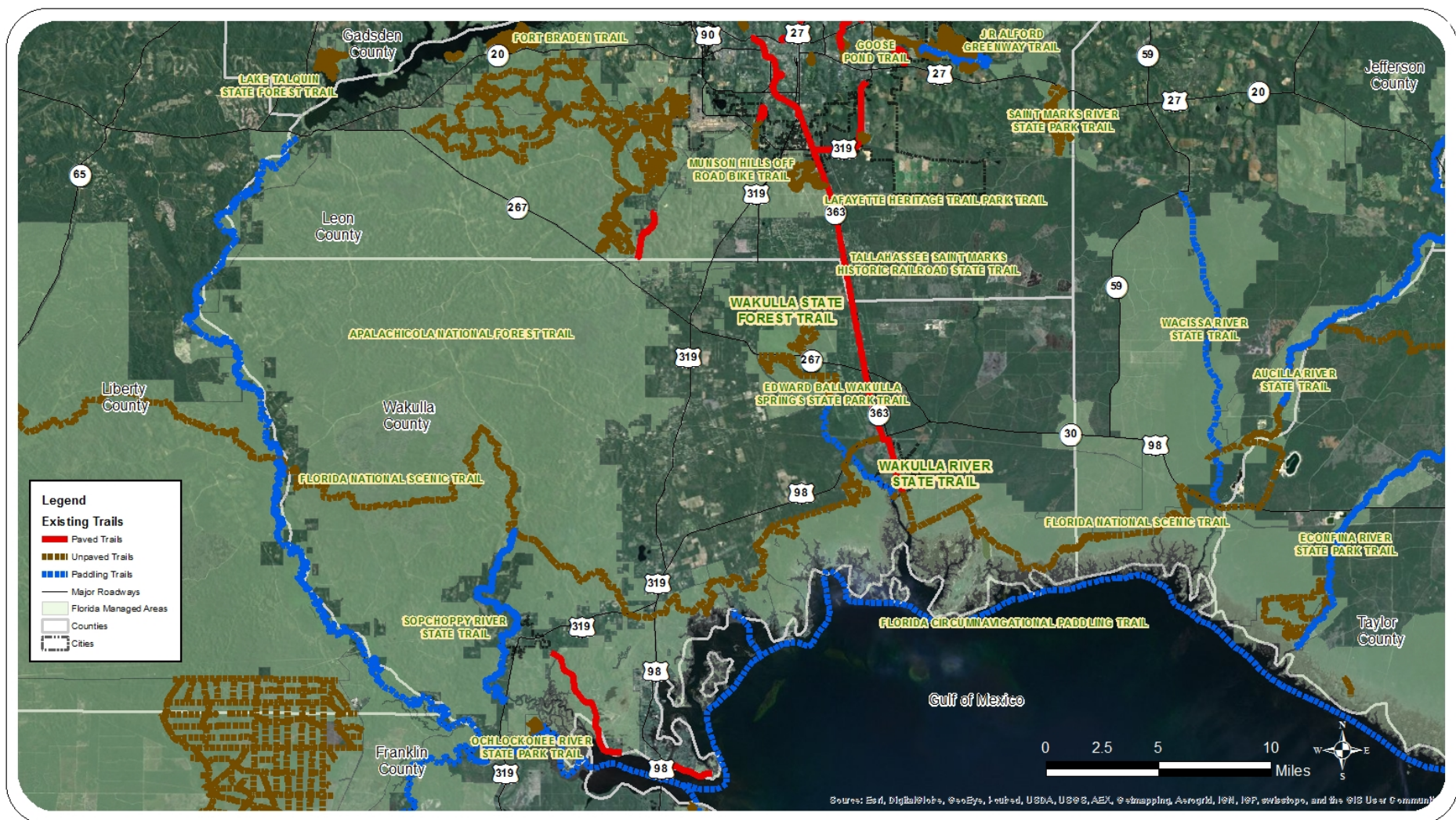
DW DESIGNWORKS

Tallahassee-Leon County Greenways Master Plan

WAKULLA COUNTY BICYCLE FACILITY RECOMMENDATIONS



Wakulla County Bicycle, Pedestrian, and Blueways Master Plan

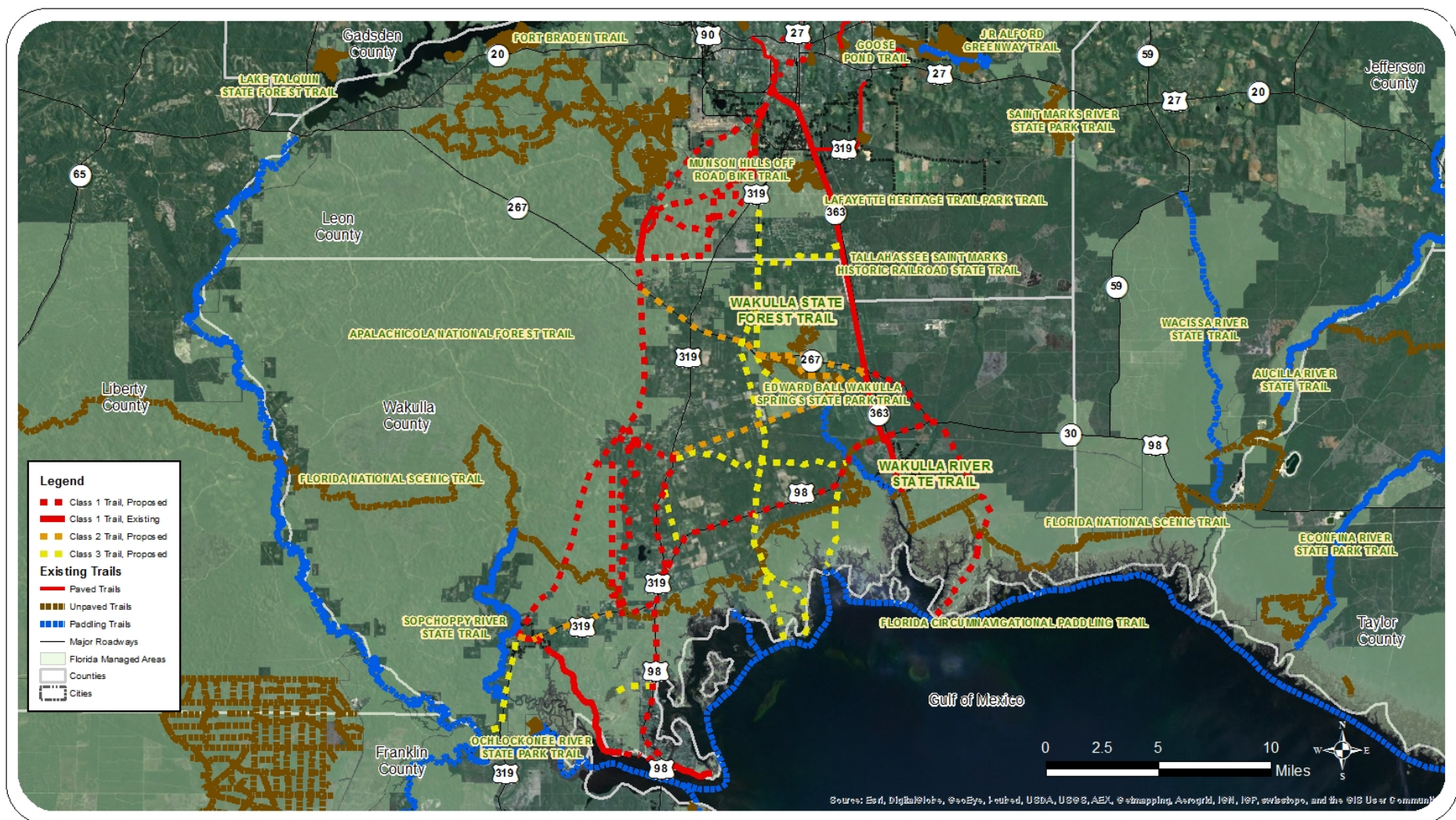


Kimley-Horn
and Associates, Inc.

Existing Trails



Existing Conditions

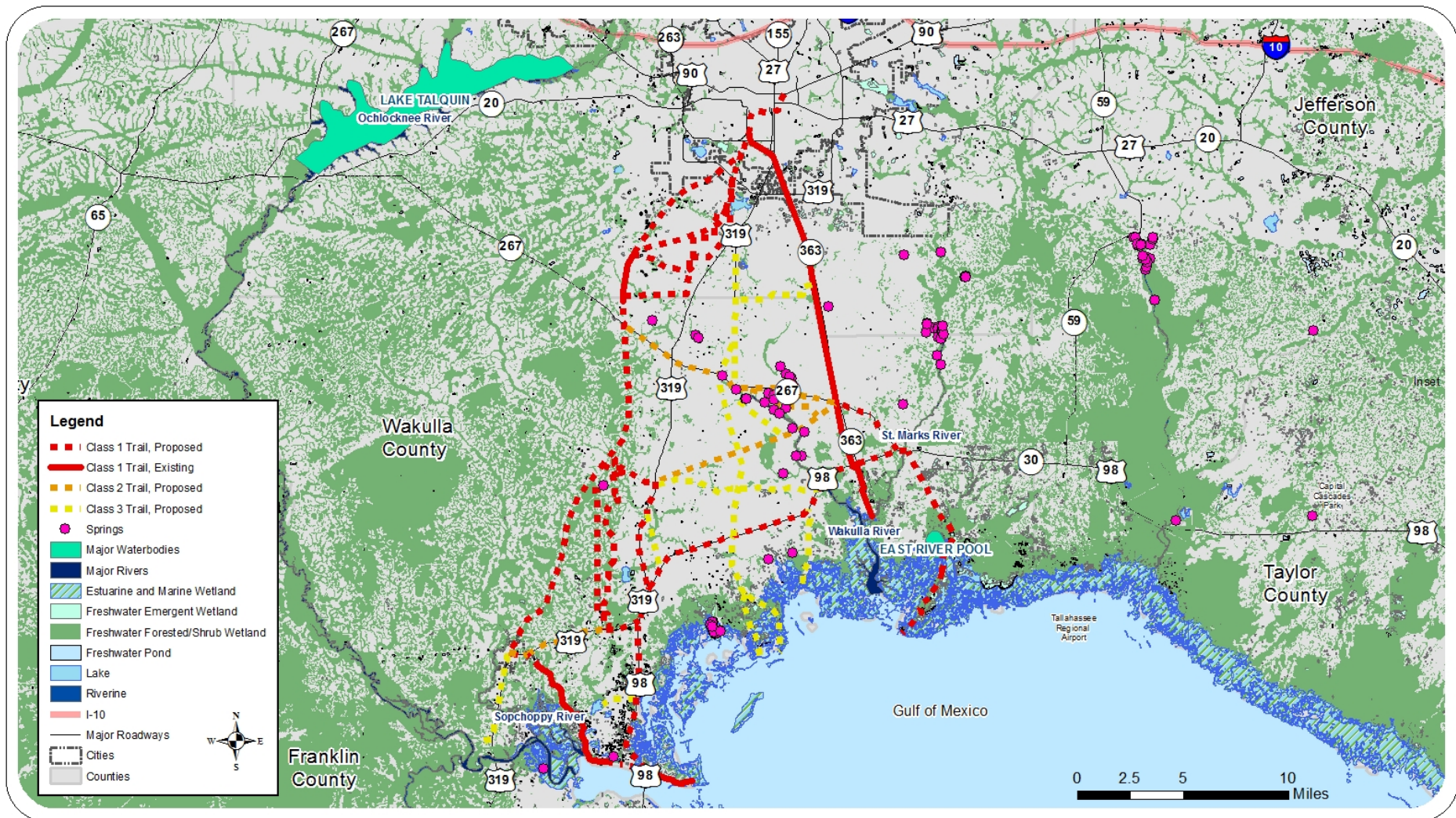


Kimley-Horn
and Associates, Inc.

Existing and Proposed Trails



Existing Conditions

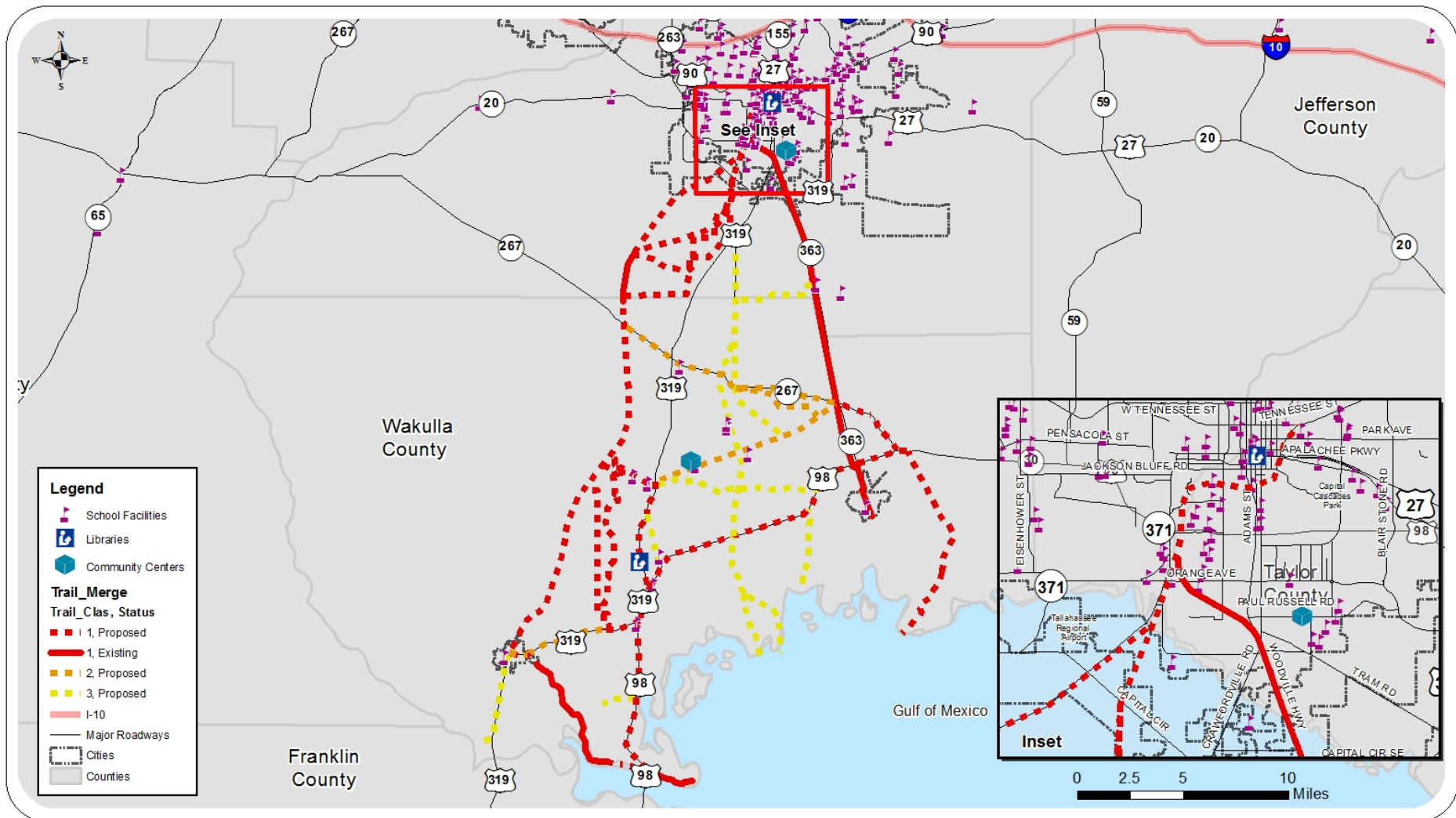


Kimley-Horn
and Associates, Inc.

Springs, Wetland, Rivers, and Major Waterbodies



Existing Conditions

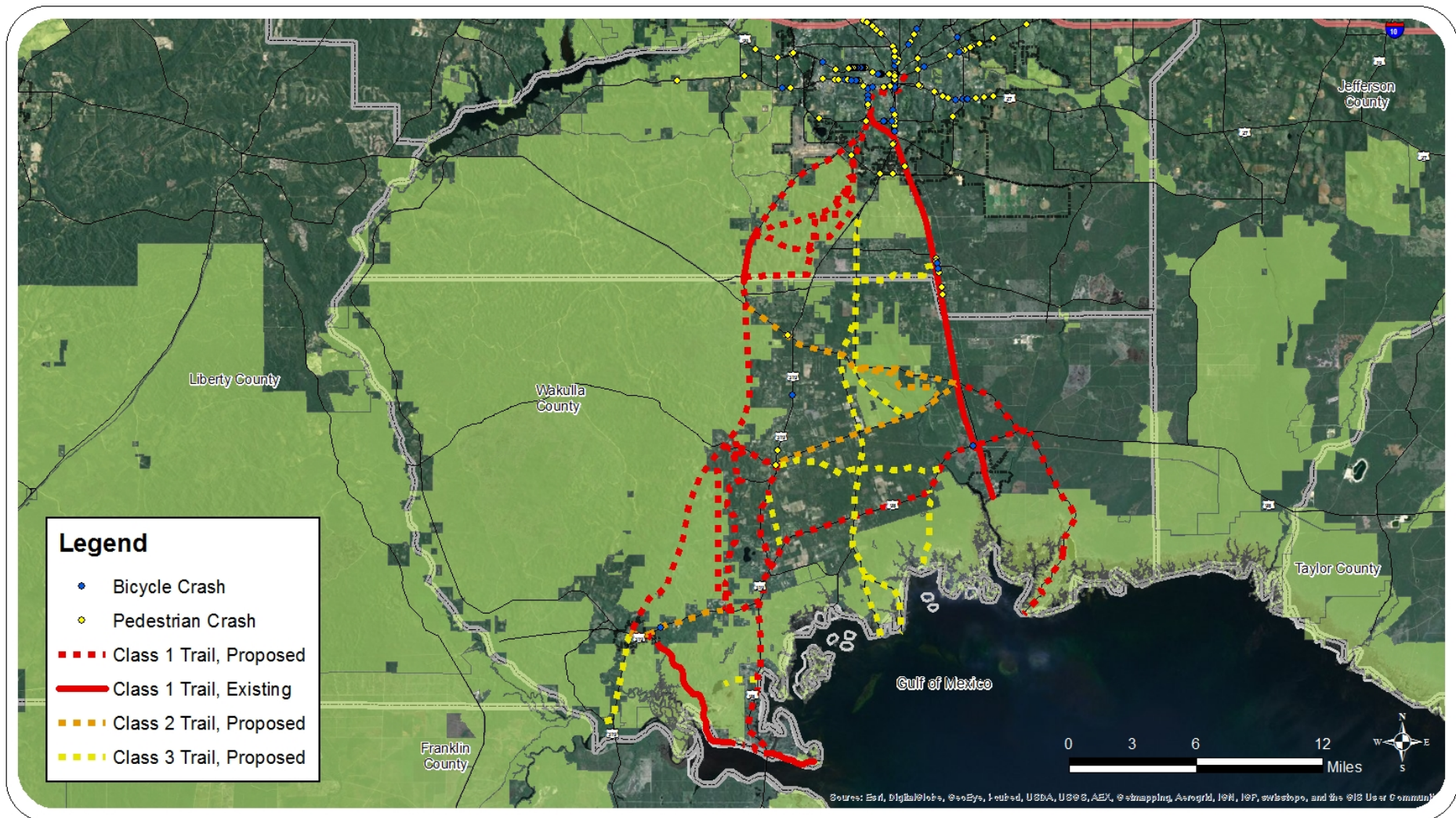


Kimley-Horn
and Associates, Inc.

Schools, Libraries, and Community Centers



Existing Conditions

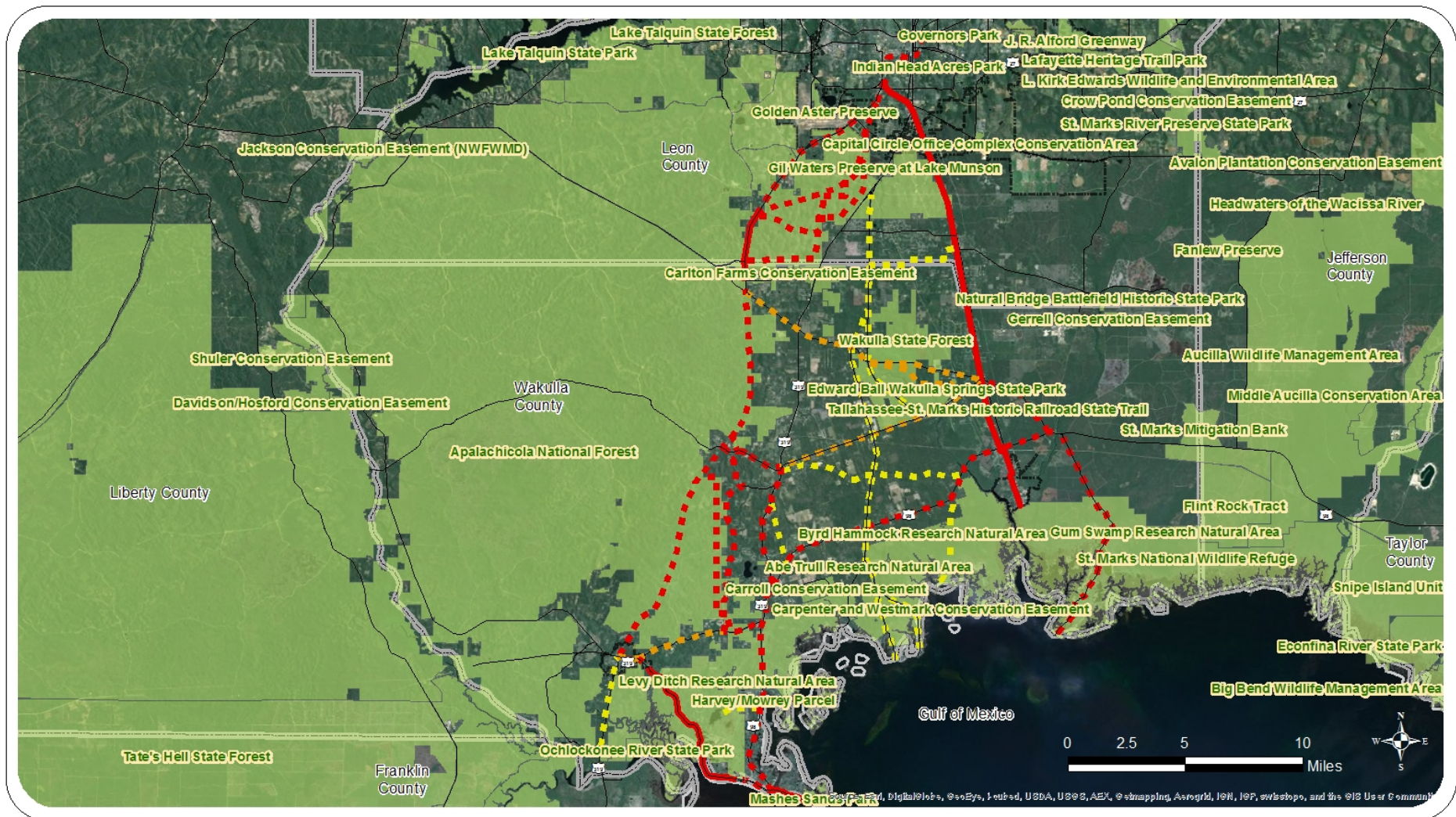


Kimley-Horn
and Associates, Inc.

Crashes Involving Bicycles or Pedestrians on State Facilities 2008-2010



Existing Conditions

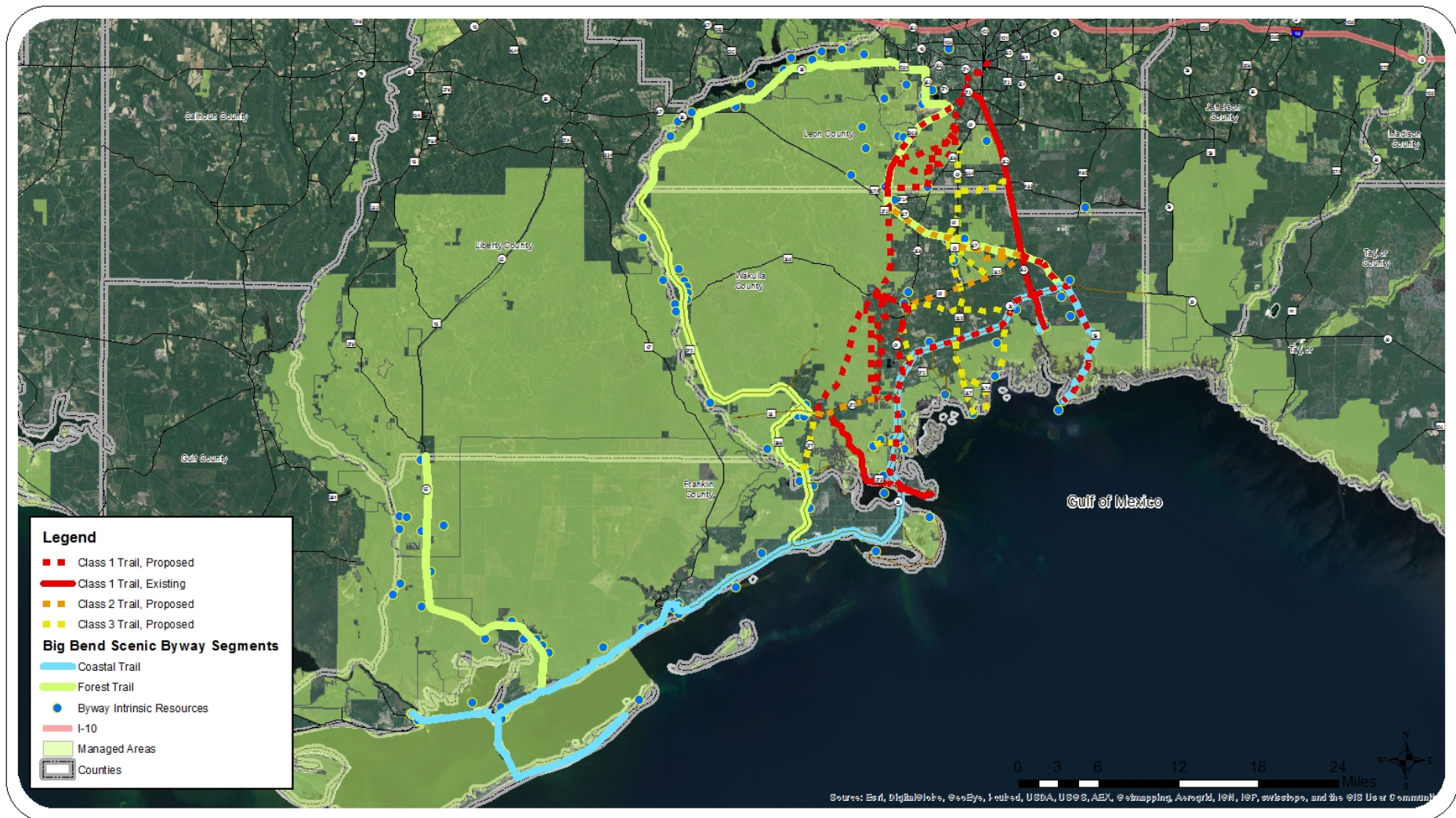


Kimley-Horn
and Associates, Inc.

Greenprint (Managed Lands)



Existing Conditions

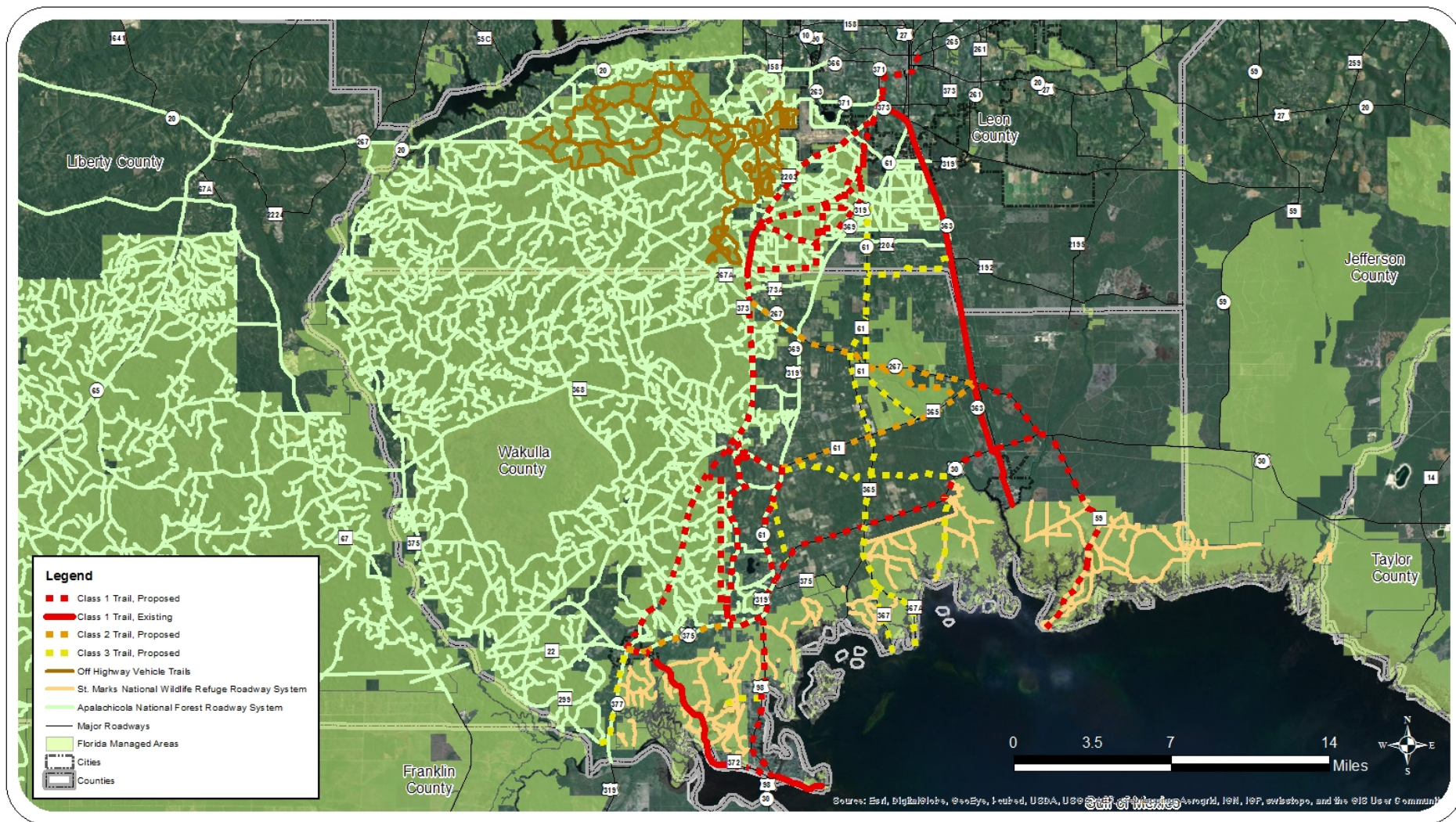


Kimley-Horn
and Associates, Inc.

Big Bend Scenic Byway



Existing Conditions

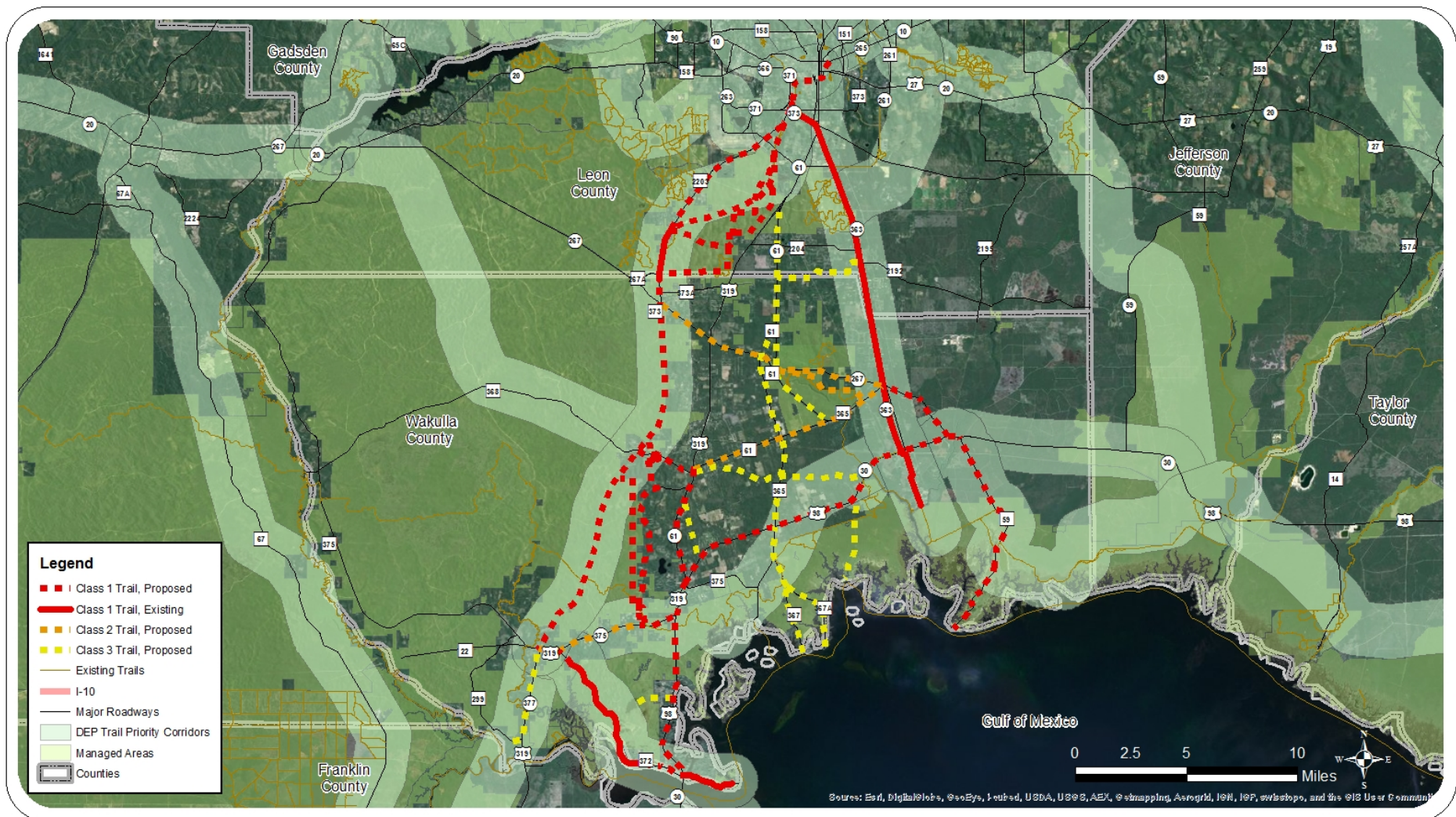


Kimley-Horn
and Associates, Inc.

Forest Roads and Roads in Managed Areas



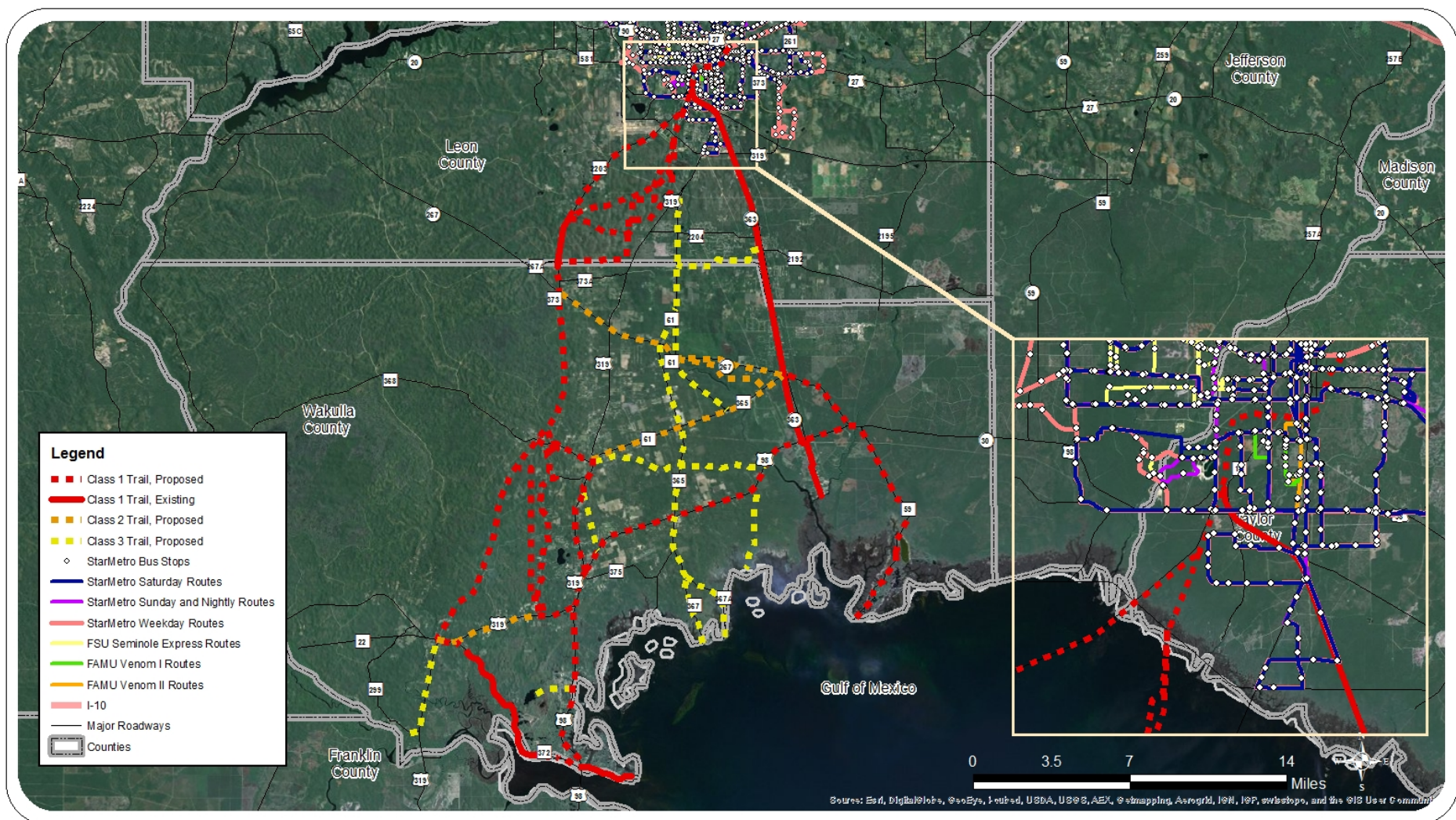
Existing Conditions



DEP Opportunity Trails Corridors



Existing Conditions



Kimley-Horn
and Associates, Inc.

StarMetro Bus Routes and Stops



Existing Conditions

Capital City^{to}the Sea Trails

CONNECTING PEOPLE AND PLACES



Existing Plans and Studies

- **Leon**

- Tallahassee-Leon County Greenways Master Plan
- City of Tallahassee Trails Connection Study
- Tallahassee-Leon County Proposed Sales Tax Extension Projects
- Tallahassee-Leon County Comprehensive Plan
- City of Tallahassee Parks and Recreation Master Plan
- Tallahassee-Leon County Bicycle and Pedestrian Master Plan
- Southwood Community Plan

- **Regional**

- Big Bend Scenic Byway Corridor Management Plan
- Socioeconomic Analysis and Location Study for the Gopher, Frog, and Alligator Rail Trail
- The Regional Mobility Plan
- The Woodville Highway Corridor Study

- **State**

- Florida Statewide Comprehensive Outdoor Recreation Plan
- The Florida Greenways and Trails System Plan
- Florida Greenbook

- **Wakulla**

- Wakulla Bicycle and Pedestrian Master Plan
- Crawfordville Town Plan
- Economic Diversification Study
- Crawfordville Sector Plan
- Plan St. Marks
- Preserving and Expanding the Genuine St. Marks Experience
- Panacea Waterfronts Florida Community: A Work Plan for a Walkable Community
- Wakulla Evaluation and Appraisal Report
- Tallahassee to St. Marks Trail Extension
- Wakulla County Comprehensive Plan

- **National**

- Equestrian Design Guidebook
- US Forest Service Trail Accessibility Guidelines
- US Access Board

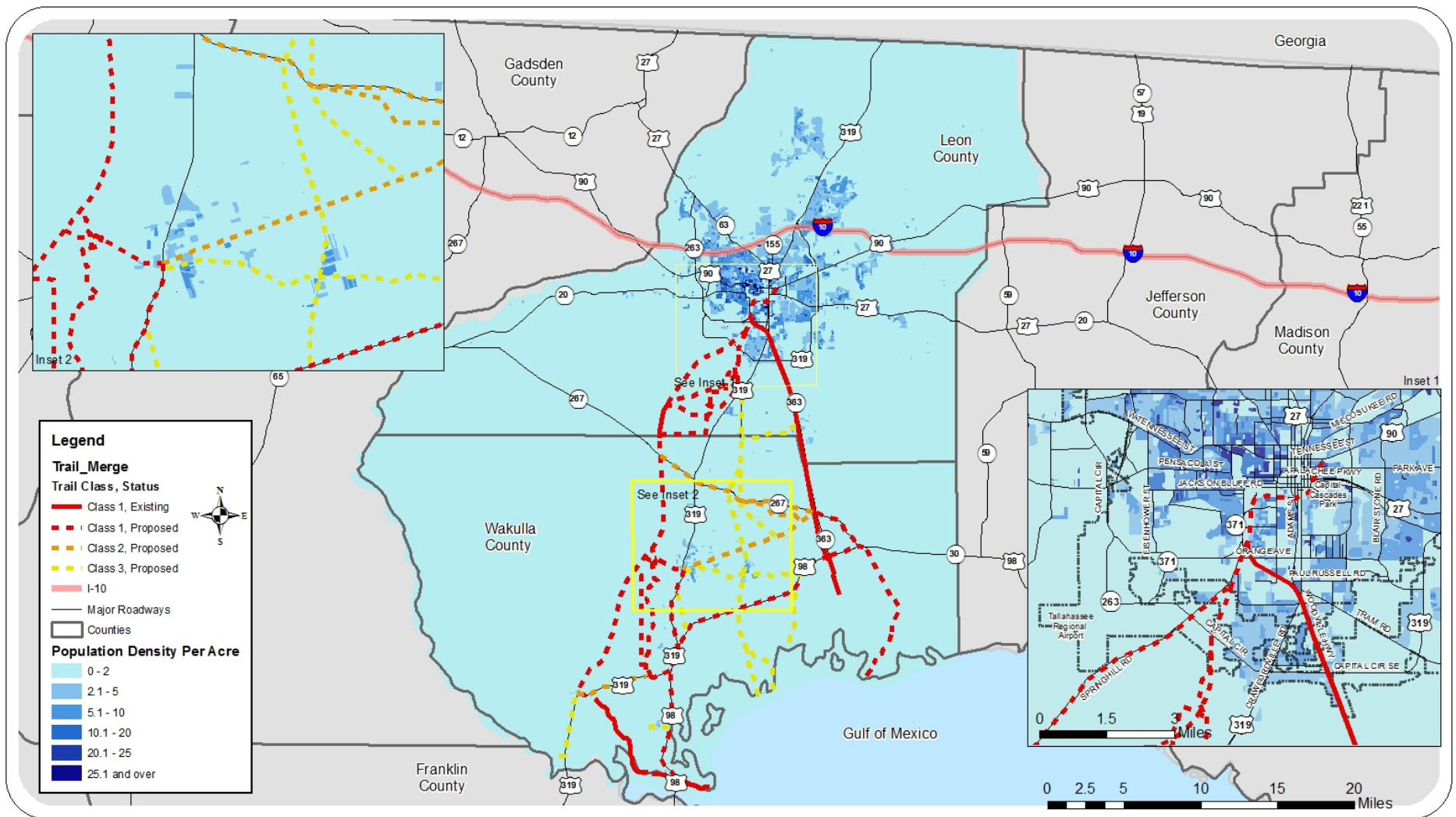
Capital City^{to}the Sea Trails

CONNECTING PEOPLE AND PLACES



Needs and Benefits Analysis

- Population
 - Population density
 - Population projections
- Socio-Demographic Analysis
 - Transportation disadvantaged populations
 - Title VI Protected Communities
- Potential economic benefits
- Projected trail demand
- Area Characteristics
 - Parks
 - Schools
 - Key Destinations
- Potential interpretation/education opportunities

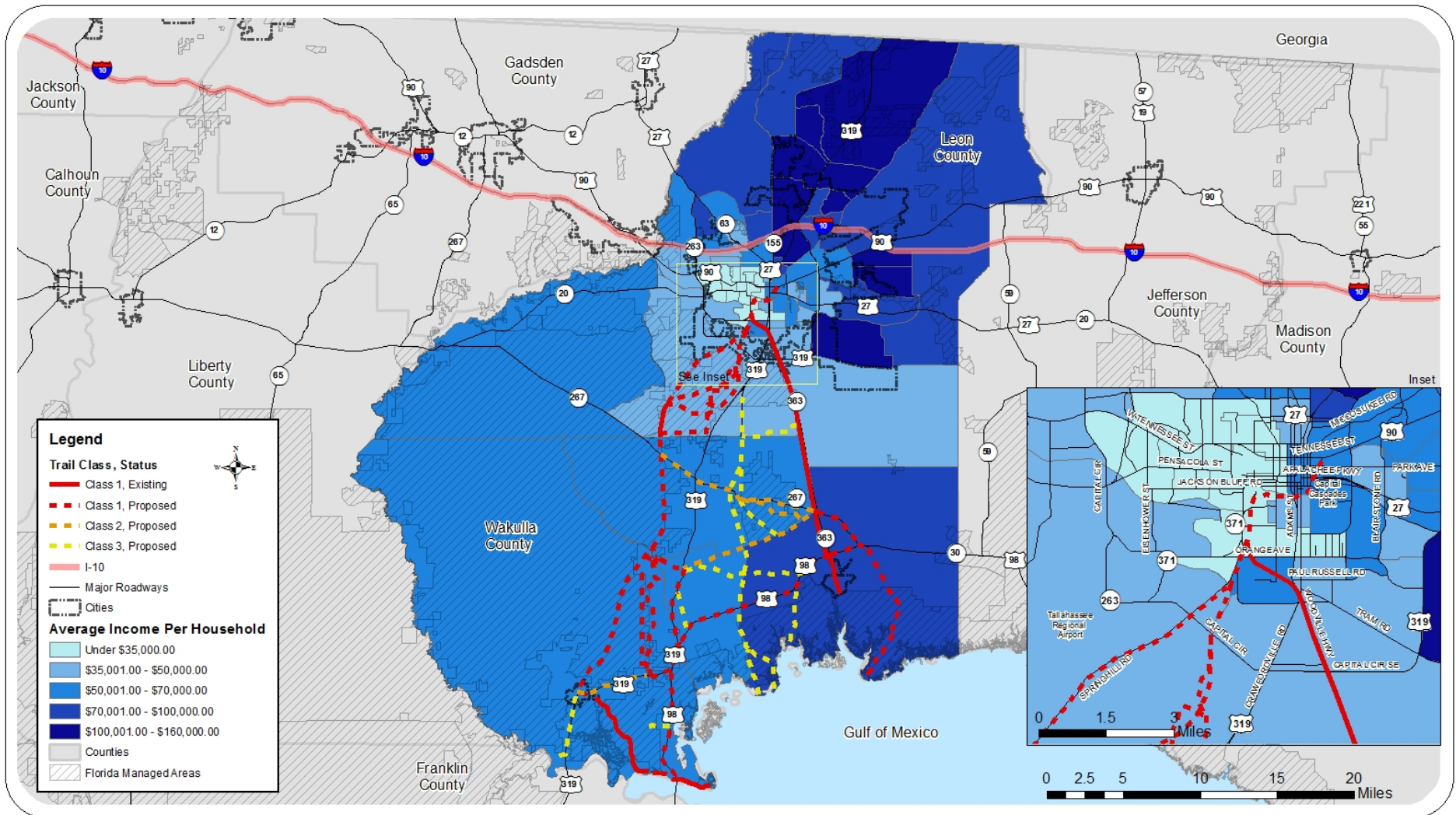


Kimley-Horn and Associates, Inc.

Population Density



Needs and Benefits Map

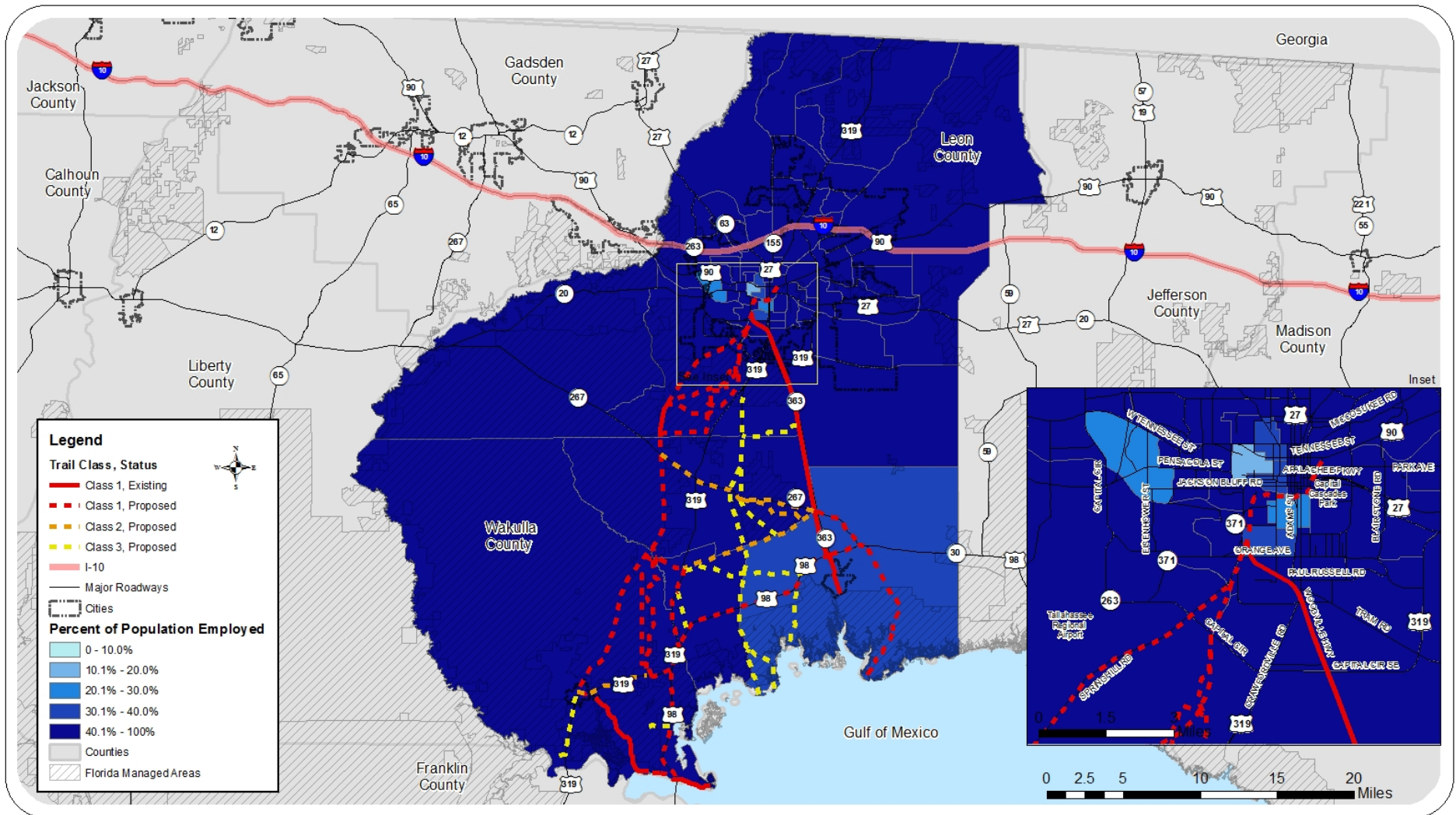


Kimley-Horn
and Associates, Inc.

Average Income per Household



Needs and Benefits Map

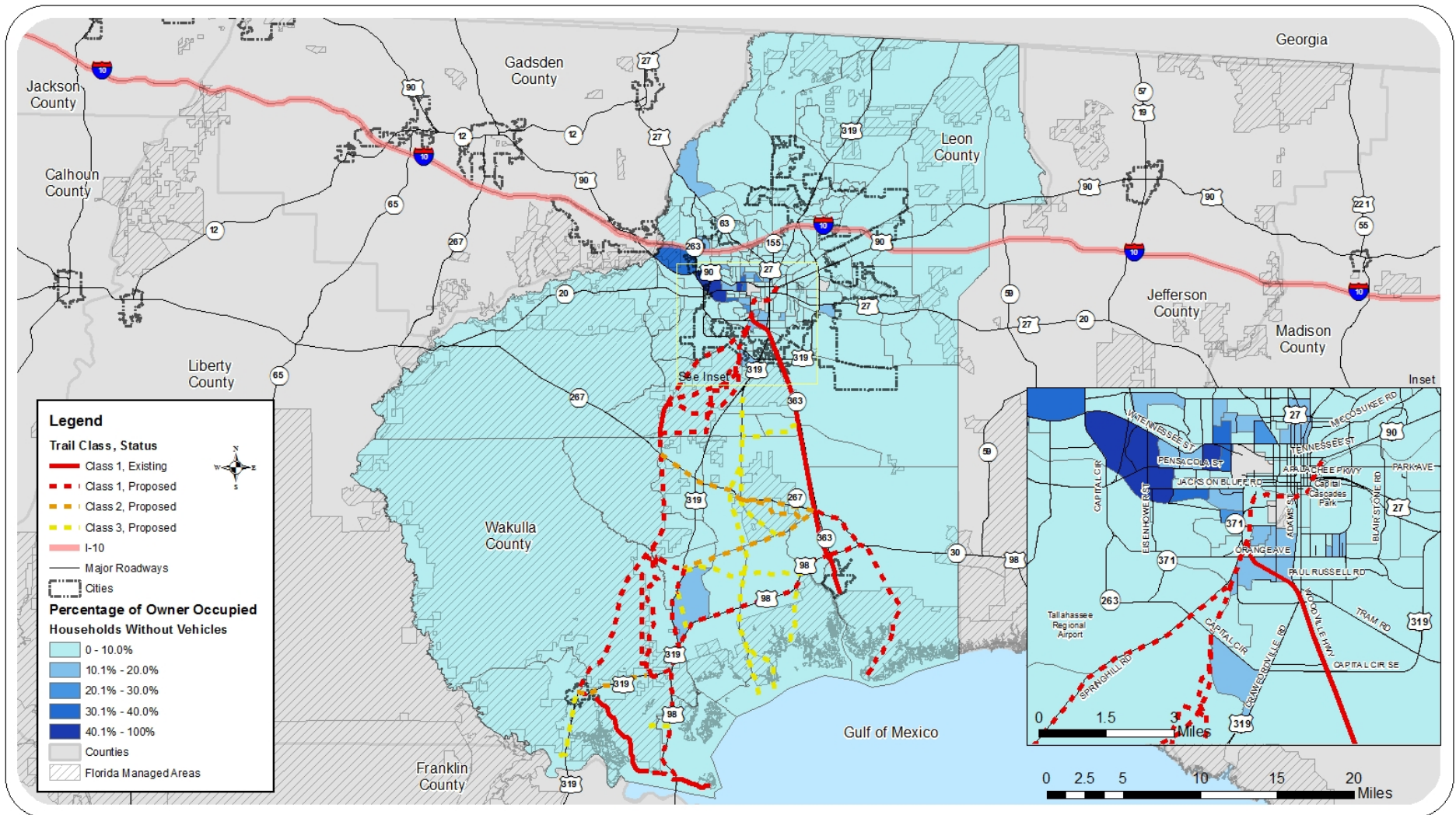


Kimley-Horn
and Associates, Inc.

Percent of Population Employed



Needs and Benefits Map

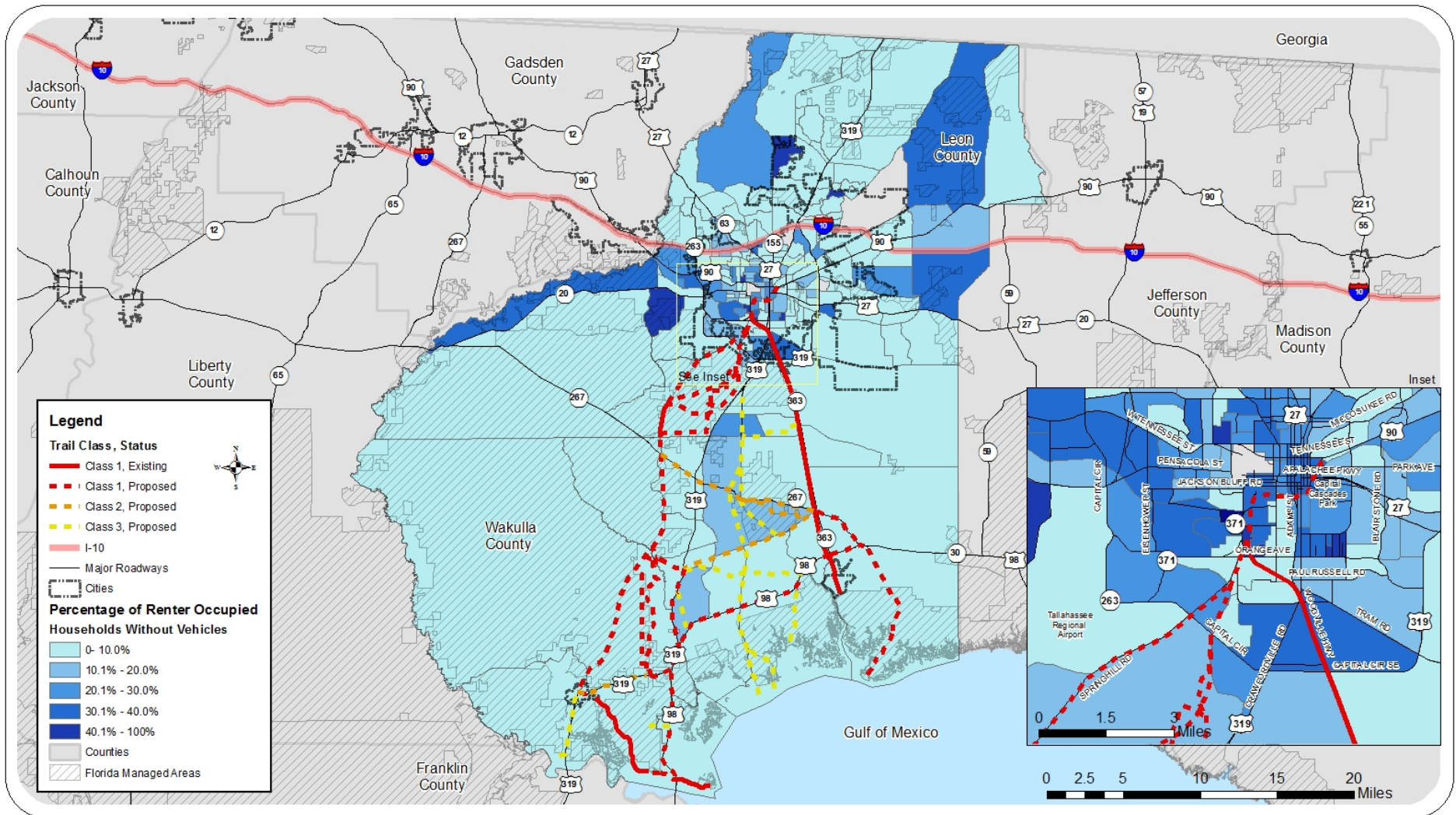


Kimley-Horn
and Associates, Inc.

Percent of Owner-Occupied Households Without Vehicles



Needs and Benefits Map

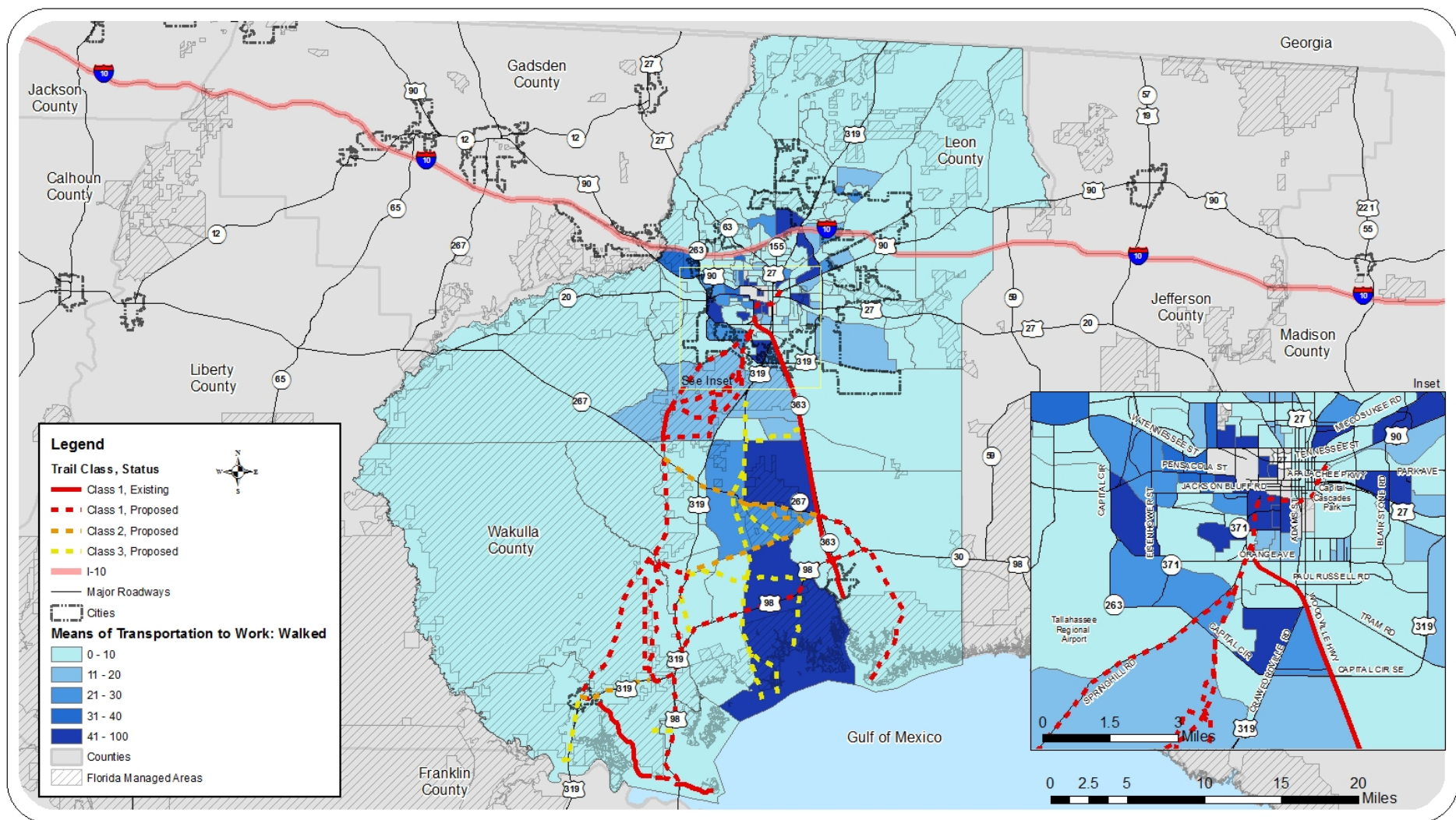


Kimley-Horn
and Associates, Inc.

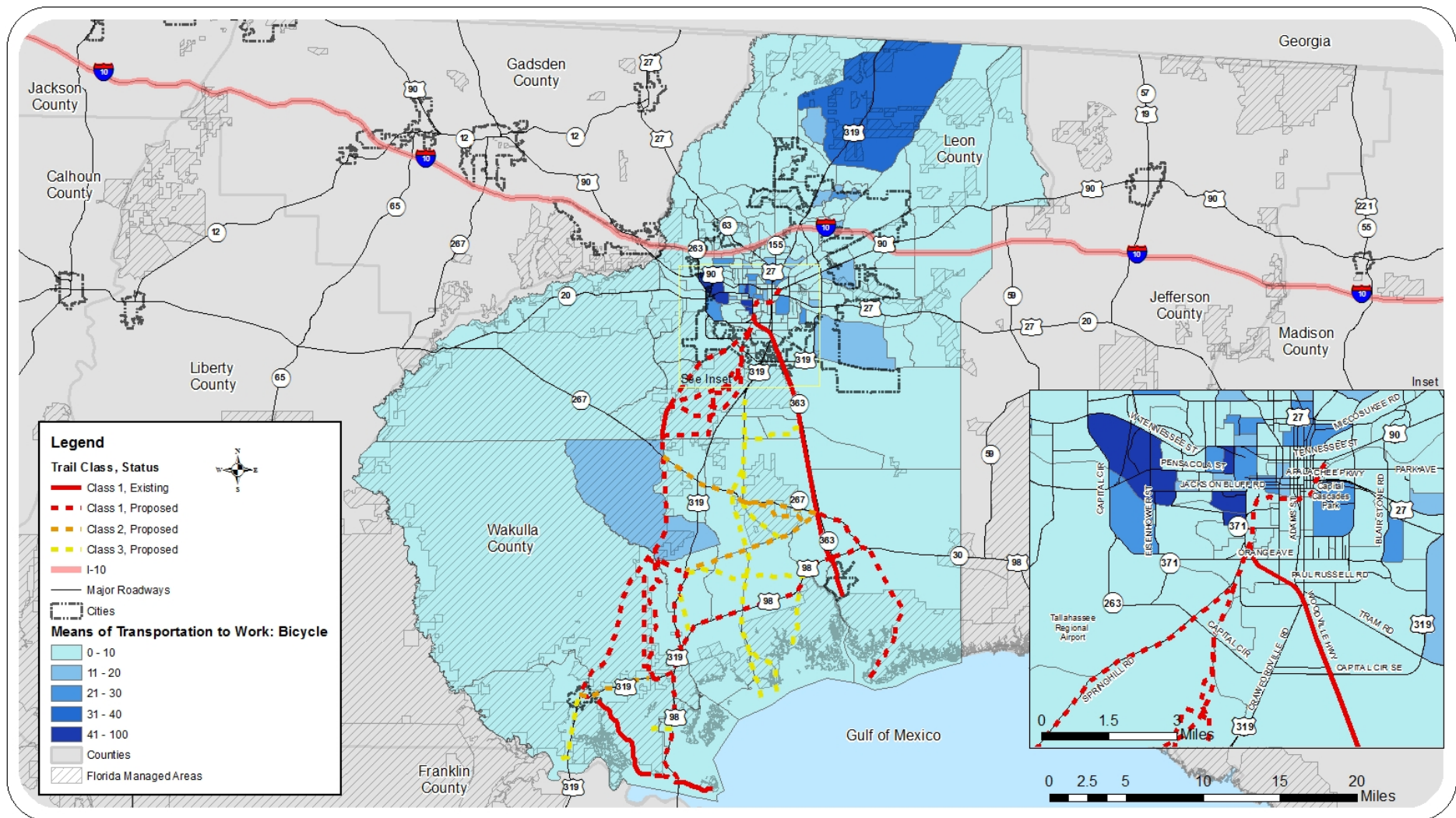
Percent of Renter-Occupied Households Without Vehicles



Needs and Benefits Map



Needs and Benefits Map



Kimley-Horn
and Associates, Inc.

Means of Transportation to Work - Bicycled



Needs and Benefits Map

Capital City^{to}the Sea Trails

CONNECTING PEOPLE AND PLACES



Public Participation

- Project Newsletter
- CRTPA Board, CRTPA Committees, and Local Governments
- Technical Advisory Committee and Trail Advocacy Group
- Stakeholder Interviews
- Public Workshop #1
 - Leon County
 - Wakulla County
- Social Networking
 - Website
 - Facebook
 - Twitter
 - Flickr
 - YouTube
- Project Survey
- Project Video



Trail Advocacy Group Members

Capital City^{to}the Sea Trails

CONNECTING PEOPLE AND PLACES



Project Newsletters

- Available online
- Printed versions available throughout Leon and Wakulla County
 - Tallahassee Community College – Crawfordville Campus
 - FSU Reservation
 - Local bicycle shops
 - Higher Ground
 - Sunshine Cycles
 - Great Bicycle
 - Local running shoe stores
 - Capital City Runners
- Title VI Outreach
 - Collins Leon County Public Library (Downtown)
 - Wakulla County Public Library (Crawfordville)
 - Jack McLean Community Center
 - Senior Centers (Wakulla and Leon)
- Distributed at trailheads

Capital City^{to}the Sea *Trails*

CONNECTING PEOPLE AND PLACES



CC2ST Technical Advisory Committee Feedback

Technical Advisory Committee Meeting #1

- Different funding sources for the corridors
- History along the proposed corridors
- Off Highway Vehicles and dog hunting
- Marketing plan needed

Technical Advisory Committee Meeting #2

- Dog hunting
- Prioritized segments
- Environmental requirements

Capital City^{to}the Sea Trails

CONNECTING PEOPLE AND PLACES



CC2ST Trail Advocacy Group Feedback

Trail Advocacy Group Meeting #1

- Marketing plan needed
- Corridor links to restaurants, hotels, etc.
- Signage
- Universal user ability

Trail Advocacy Group Meeting #2

- Prioritized segments
- Current equestrian areas and future needs

Capital City^{to}the Sea Trails

CONNECTING PEOPLE AND PLACES



Stakeholder Interviews

- Dale Allen – The Florida Greenways and Trails Foundation
- Jim Schmid – National Forest Service
- Marti Miller – Florida Forest Service
- Bob Ballard – TCC Wakulla Environmental Institute
- Marcus Beard – Apalachicola National Forest
- Robin Birdsong and Doug Alderson – DEP OGT
- David Jones – Florida Disabled Outdoors Association
- Inovia – Capital Circle Southwest Design
- Dog Hunters
- Capital City Cyclist
- Gulf Winds Track Club
- Gulf Winds Triathletes Club
- Southern Trail Riders Association
- Big Bend Scenic Byway CME
- Lee Daniel – Visit Tallahassee
- J.R. Harding – Florida Agency for Persons with Disabilities
- Bike Florida

Capital City^{to}the Sea Trails

CONNECTING PEOPLE AND PLACES



Top Connections Identified by the Public

- Connect St. Marks Trail to Panacea and Ochlockonee Bay Trail
- Connect St. Marks Trail to the Lighthouse
- Connect Lake Elberta to FSU & Gaines Street
- Connect St. Marks Trail to Wakulla Springs
- Connect to Shell Point and Wakulla Beach
- Connect Tallahassee to Trout Pond
- Connect to Heritage Village

Capital City^{to}the Sea Trails

CONNECTING PEOPLE AND PLACES



Proposed Trailhead Locations Identified by the Public

- Intersection of St. Marks Trail and US 98
- Wakulla Welcome Center in Panacea
- Heritage Village
- Intersection of Gaines Street and Stadium Drive
- Downtown Crawfordville
- TCC Wakulla Environmental Institute
- Sopchoppy
- St. Marks

Capital City^{to}the Sea Trails

CONNECTING PEOPLE AND PLACES



Amenities Identified by the Public for Proposed Trails and Trailheads

- Water for both people and pets
- Restrooms
- Benches
- Shelter
- Parking for all user groups
- Charging stations for electronic mobility devices
- Signage
 - Keep signage uniform along the trails
 - Have signage for nearby restaurants and services
 - Have signage at natural/historical points of interest
 - Have user signage at trailheads to promote safety

Capital City^{to}the Sea Trails

CONNECTING PEOPLE AND PLACES



Marketing Plan Needed Based on Public Input

- Things to be included:
 - Attend local events such as festivals or farmers markets and set up an informational table
 - Develop small informational cards and leaflet flyers to hand out/place in sporting goodie bags
 - Get schools and parent-teacher organizations involved
 - Organize rides to promote the CC2ST
 - Get businesses to support the project and have information available for them to distribute

Capital City^{to}the Sea Trails

CONNECTING PEOPLE AND PLACES



Draft Guiding Principles and Evaluation Criteria Based on Public Input

- Participants at both public workshops validated the overarching goal, guiding principles, and evaluation criteria
 - Safety and regional transportation confirmed as high priorities
 - Added emphasis on accessibility
 - Added emphasis on health and wellness
 - Added consideration of available right-of-way
 - Added consideration of planned development
 - Added consideration of environmental impacts consistent with PD&E criteria
- Evaluation Criteria approved by Technical Advisory Committee and Trail Advocacy Group
- Evaluation Criteria approved by CRTPA TAC
- Evaluation Criteria approved by CRTPA CMAC
 - Expanded criteria for connectivity to existing and planned development to include connections via public transportation, sidewalks and bicycle lanes, and existing trails

Capital City^{to} the Sea Trails

Draft Based on Public Input

CONNECTING PEOPLE AND PLACES



Overarching Goal of Capital City to the Sea Trails

Develop a series of shared use paths that connect various areas from Capital Cascades Park in the City of Tallahassee all the way to the sea

Guiding Principles	Evaluation Criteria
Connect People and Places	<ul style="list-style-type: none"> Creates a Regional Facility (including connections to existing trails) Creates a Local Facility Enhances Connectivity to Existing and Planned Development (including connections via public transportation, sidewalks and bicycle lanes, and existing trails)
Improve Quality of Life	<ul style="list-style-type: none"> Increases Transportation Opportunities Increases Health, Wellness, and Recreational Opportunities
Improve Connectivity*	<ul style="list-style-type: none"> Provides Public Connectivity to Managed Public Lands (including connectivity to State Parks, National Forests, State Forests, Schools and Educational Opportunities) Provides Connectivity for Transportation Disadvantaged (Title VI Protected Communities) Builds a better transportation network to attract differently-abled people
Provide Opportunities for Sustainable Economic Growth	<ul style="list-style-type: none"> Potential to Attract Tourists Potential to Draw Activity from a Broad Audience Connects to Commercial Corridors Located in Proximity to Local Businesses
Increase Awareness of the Capital Region	<ul style="list-style-type: none"> Would be Useful for Marketing and Promoting the Region Would Create a Sense of Place in the Region
Minimize Environmental Impacts	<ul style="list-style-type: none"> Provides Opportunities to Enhance the Natural Environment Can be Located Within Existing Right-of-Way Minimizes Impacts to Floodplains, Surface Waters, Wetlands, Habitats, and Contaminated Sites
Develop a Maintainable Network	<ul style="list-style-type: none"> Minimizes the Costs for Maintaining the Trail
Improve Safety	<ul style="list-style-type: none"> Improves Safety for a Variety of User Types
Includes Public Participation	<ul style="list-style-type: none"> Creates a Corridor Supported by the Public
Develop Strategic Partnerships	<ul style="list-style-type: none"> Provides an opportunity to develop a variety of partnerships with the public sector, the nonprofit sector, and private enterprise

*All facilities will be developed according to current applicable standards with the goal of providing universal accessibility

Capital City^{to}the Sea Trails

CONNECTING PEOPLE AND PLACES



Draft Guiding Principles and Evaluation Criteria Based on Public Input

- Participants at both public workshops validated the overarching goal, guiding principles, and evaluation criteria
 - Safety and regional transportation confirmed as high priorities
 - Added emphasis on accessibility
 - Added emphasis on health and wellness
 - Added consideration of available right-of-way
 - Added consideration of planned development
 - Added consideration of environmental impacts consistent with PD&E criteria
- Evaluation Criteria approved by Technical Advisory Committee and Trail Advocacy Group
- Evaluation Criteria approved by CRTPA TAC
- Evaluation Criteria approved by CRTPA CMAC
 - Expanded criteria for connectivity to existing and planned development to include connections via public transportation, sidewalks and bicycle lanes, and existing trails

Capital City^{to}the Sea Trails

CONNECTING PEOPLE AND PLACES



Social Networking Outreach

- Facebook
 - 172 Likes
- Twitter
 - 25 Followers
- YouTube
 - 110 views
- Website
 - 3,952 views



Like



@CC2STrails



As of 9/16/2013

Capital City^{to}the Sea Trails

CONNECTING PEOPLE AND PLACES



Project Survey

- Survey Feedback

- Most frequent responses for where citizens would like to see trailheads (from 126 open-ended responses)

- Sopchoppy
 - Panacea
 - Florida State University Campus
 - St. Marks Wildlife Refuge
 - Cascades Park
 - Franklin County

- 96% of respondents strongly or somewhat support CC2ST

- Total surveys received - **287**

Capital City^{to}the Sea Trails

CONNECTING PEOPLE AND PLACES



Identification of Corridors and Alternatives

- Based on data collection, analysis, and public input
- Alternatives will be identified for each corridor
- Corridors and alternatives will be assessed based on guiding principles and evaluation criteria and public input
- Full evaluation of alternatives will be part of the PD&E process

Capital City^{to}the Sea Trails

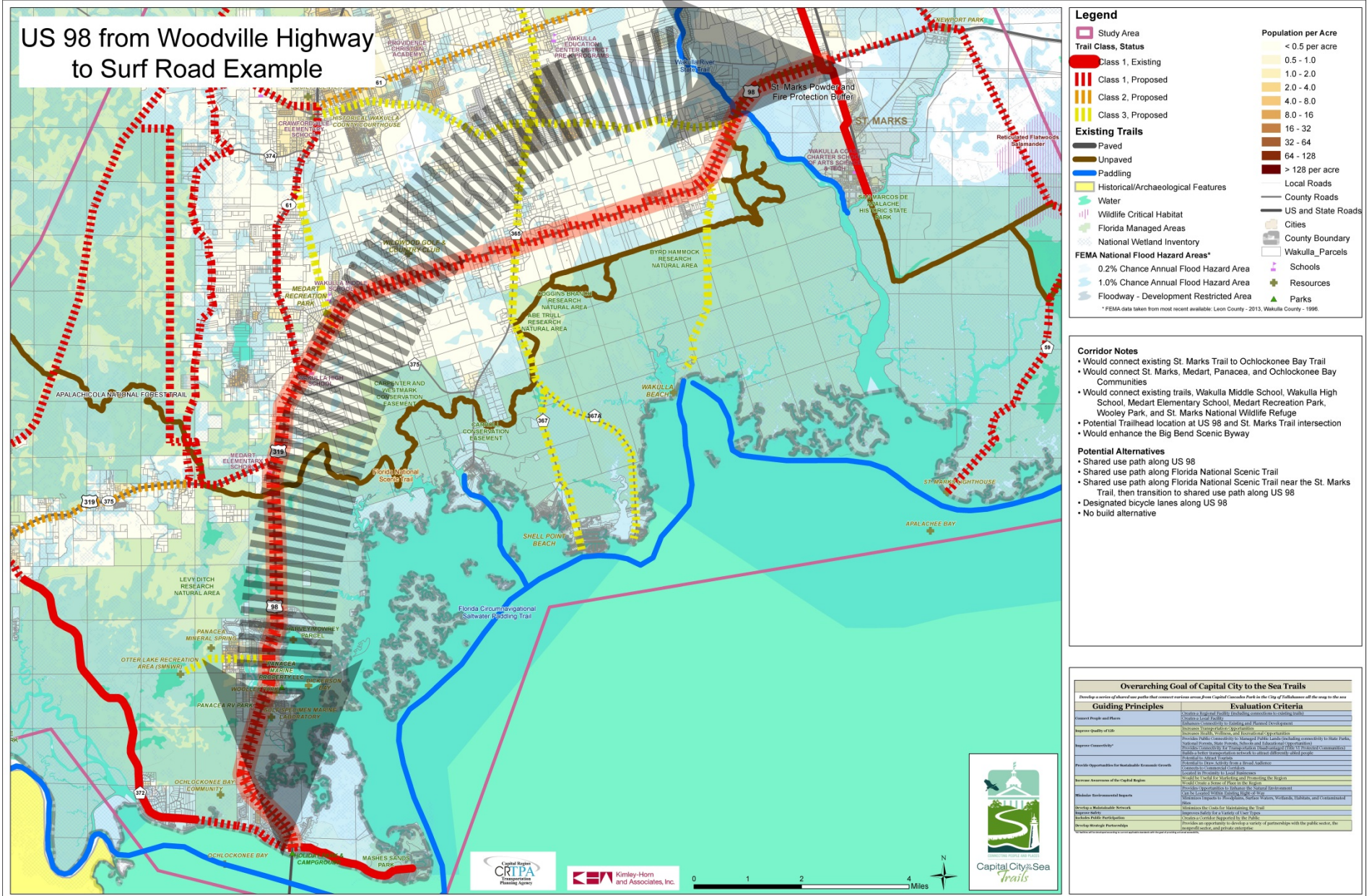
CONNECTING PEOPLE AND PLACES



Assessment of Alternatives

- Study area
- Trail Classification
- Historic Features
- Archeological Features
- Waterbodies
- Critical Wildlife Habitat
- Florida Managed Areas
- FEMA Flood Hazard Areas
 - 0.2% Chance Flood Hazard Area (500-Year Flood Zone)
 - 1% Change Flood Hazard Area (100-Year Flood zone)
 - Floodways
- Wetlands (NWI)
- Population Density
- Transportation Network
- Schools
- Parks
- Other Intrinsic Resources
 - Scenic
 - Historical
 - Archeological
 - Recreational
 - Cultural
- Rights-of-Way
- Evaluation criteria

US 98 from Woodville Highway to Surf Road Example



Example: Draft Assessment Map

Capital City^{to}the Sea Trails

CONNECTING PEOPLE AND PLACES



Next Steps

- Workshop #2 to gain input on draft phasing and alternatives
- Workshop #3 to gain input on draft master plan recommendations
- Develop maintenance guidance
- Develop phasing and priorities
- Develop implementation strategies
- Compile best management practices
- Identify supportive infrastructure
- Identify potential funding opportunities
- Finalize Master Plan
- Develop Marketing Plan
- PD&E Evaluation

Capital City^{to}the Sea Trails

CONNECTING PEOPLE AND PLACES



Public Workshops

Public Workshop #2 – Input from the public for the development of draft phasing and alternatives

Leon County: Jack McLean Community Center

September 19, 2013 at 6:00 p.m.

Wakulla County: Wakulla County Commission Chambers

September 26, 2013 at 6:00 p.m.

Public Workshop #3 – Summarize previous input and recommendations. Request input from the public on draft recommendations, the draft master plan, and implementation.

Leon County: Jack McLean Community Center

December 3, 2013 at 6:00 p.m.

Wakulla County: Wakulla County Commission Chambers

December 5, 2013 at 6:00 p.m.