

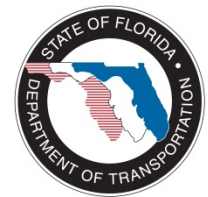
CRTPA BOARD MEETING SEPTEMBER 16, 2013

**SR 373 (Orange Ave.) Bridge Replacement
over the St. Marks Trail**

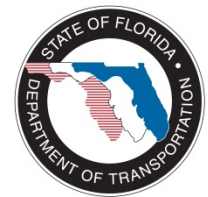




Bridge from Sidewalk (looking east)



Existing Bridge (from Trail)

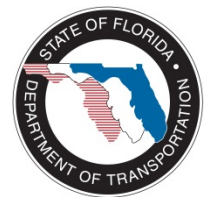


Bridge Status

At CRTPA Meeting on January 28, 2013:

- FDOT presented options for at-grade crossing and bridge replacement
- CRTPA preferred the bridge option
- Bridge funding was not available until FY 2018

The existing bridge was posted with 15 ton weight limit on May 6, 2013. FDOT immediately developed an approach to address the situation as quickly as possible



3R Project Information

Resurfacing Project on Orange Avenue (FPID 426965-1)

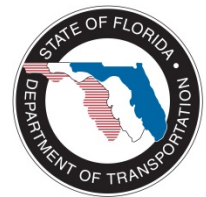
- 1.7 miles from Lake Bradford Rd. to West of Monroe St.
- Providing Sidewalk connectivity and minor ADA improvements
- **Construction Letting moved to June 2014 with delayed start.**



Bridge Project Information

Bridge Replacement Project (FPID 432137-1)

- FDOT has advanced this project to address concerns
- Construction Letting tentatively set for February 2014
- Design work now underway and plans are 60% complete
- Utility Coordination also underway. Some relocation is necessary.
- No Right-of-Way acquisition due to schedule constraints
- Without Right-of-Way acquisition, it is not feasible to construct an on-site detour.



Proposed Project Timeline/ Detours

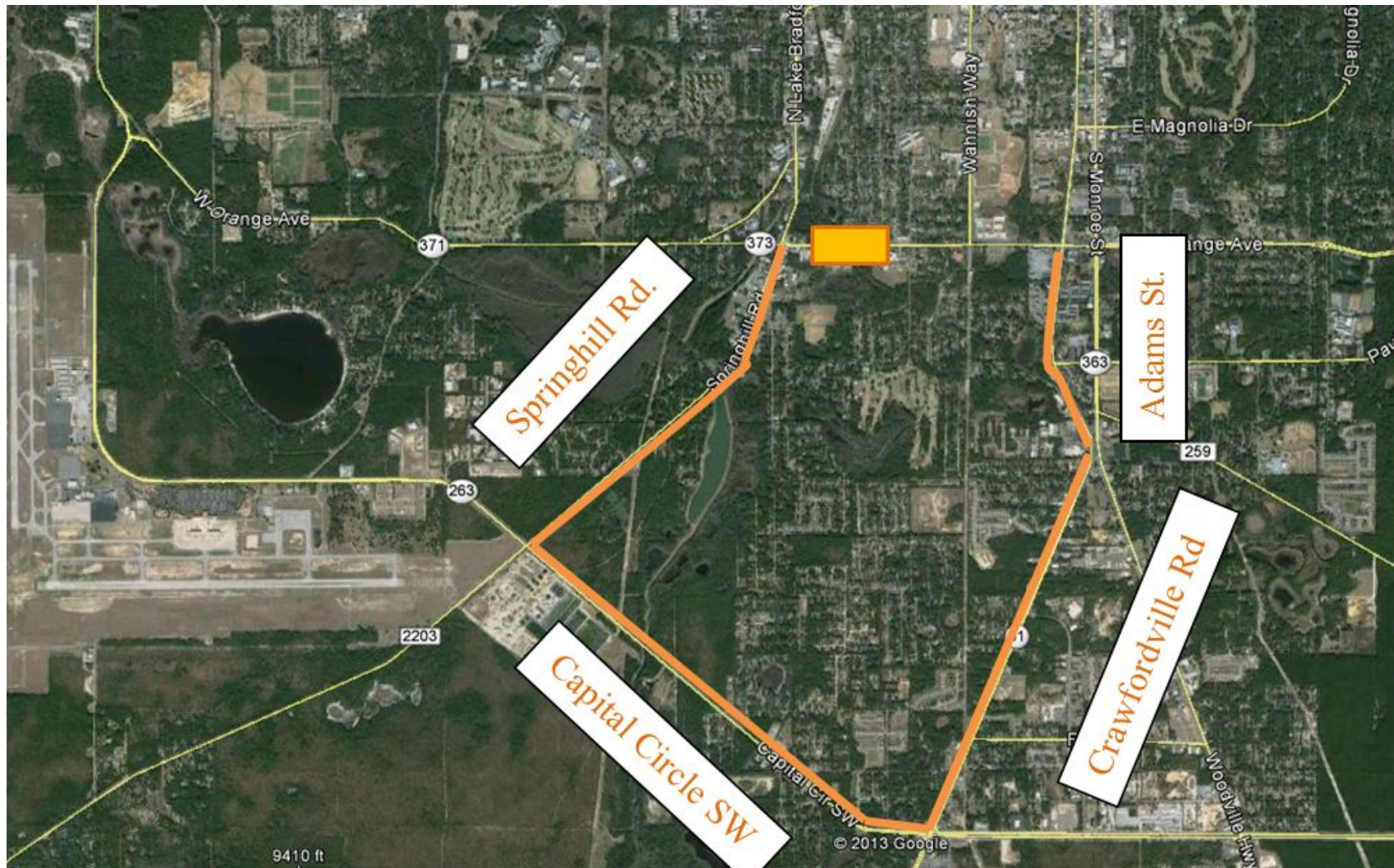
- Close Orange Ave. at project site on June 2, 2014
- Re-open Orange Ave. by August 11, 2014

DETOURS under Consideration:

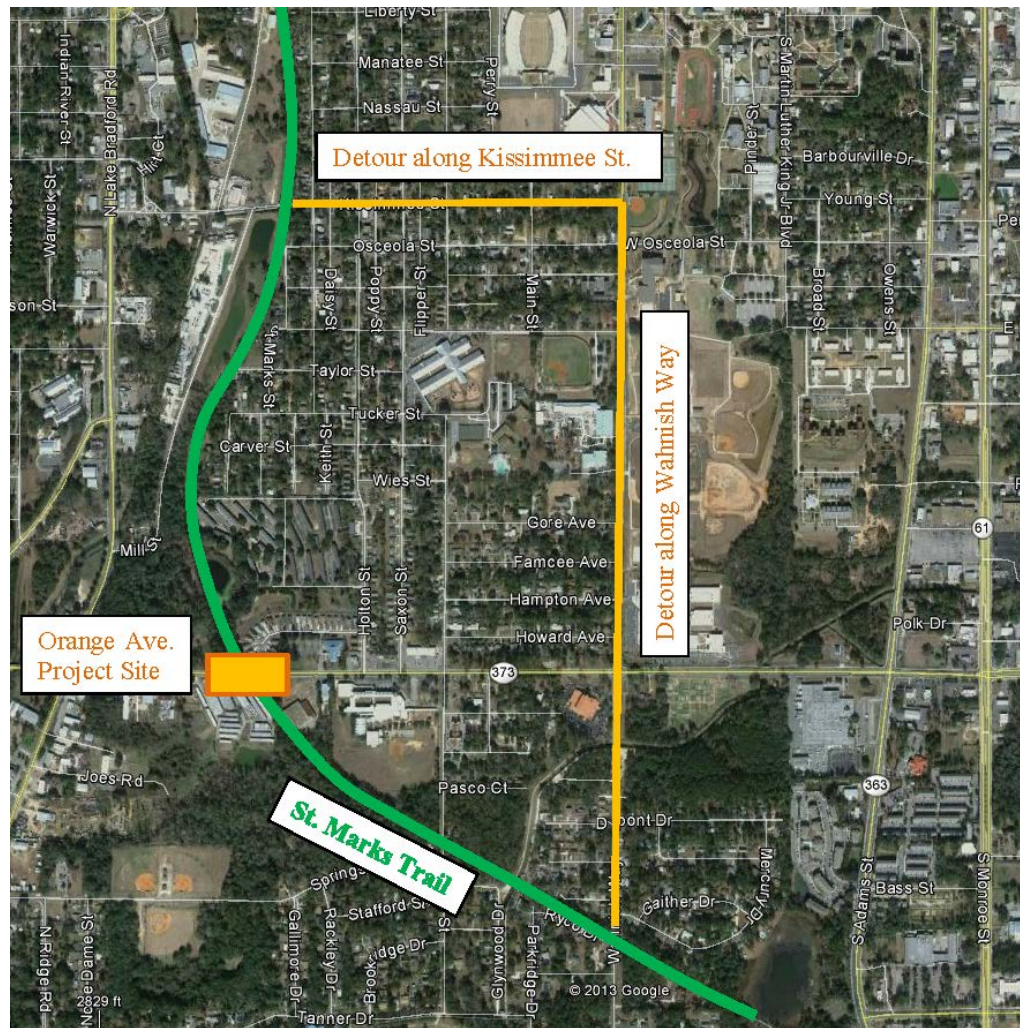
- Detour Orange Ave. vehicle traffic via Springhill Rd., Capital Circle, Crawfordville Rd. & Adams St.
- Detour St. Marks Trail via Kissimmee St. & Wahnish Way



Orange Avenue Detour Route



St. Marks Trail Detour Route

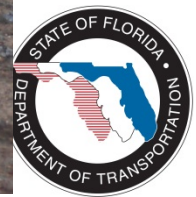


Approach for Bridge Replacement

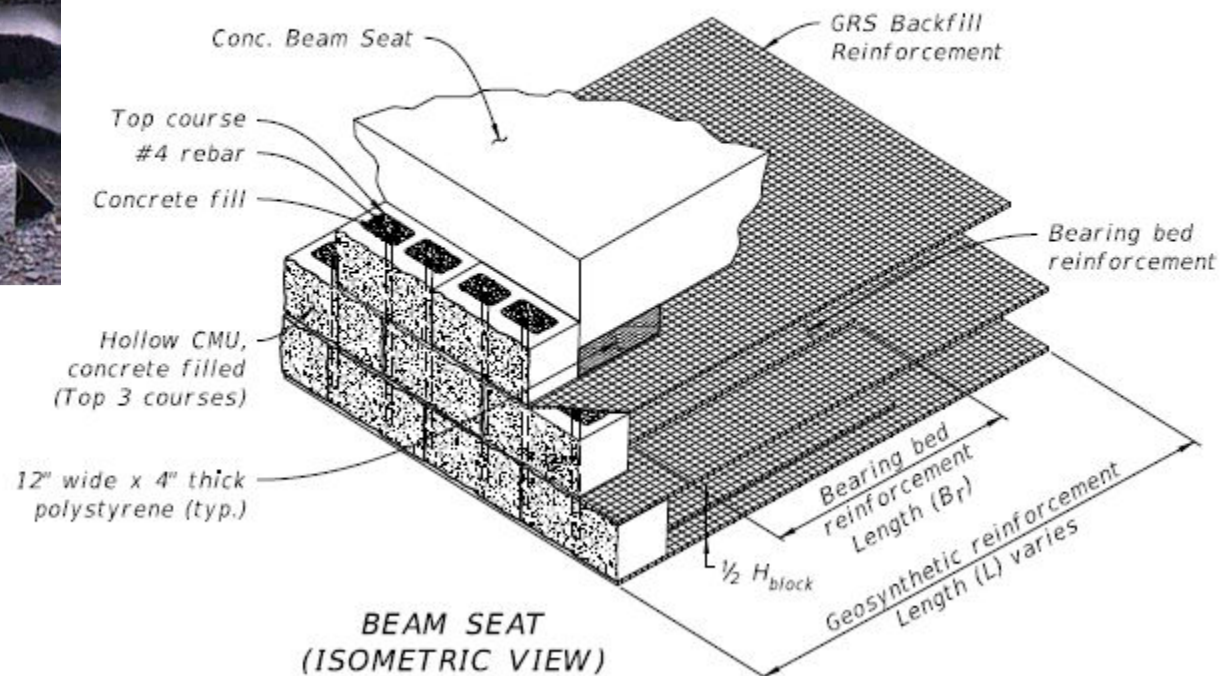
- 70 calendar days construction
- Require Contractor to work 7 days per week
- Incentives/ Disincentives in contract
- Use **accelerated bridge construction** techniques:
 - Geosynthetic Reinforced Soil (GRS) Abutment System
 - Precast Bridge Slab Units



GRS Bridge (Escambia County)



GRS Construction Method



GRS Construction Method

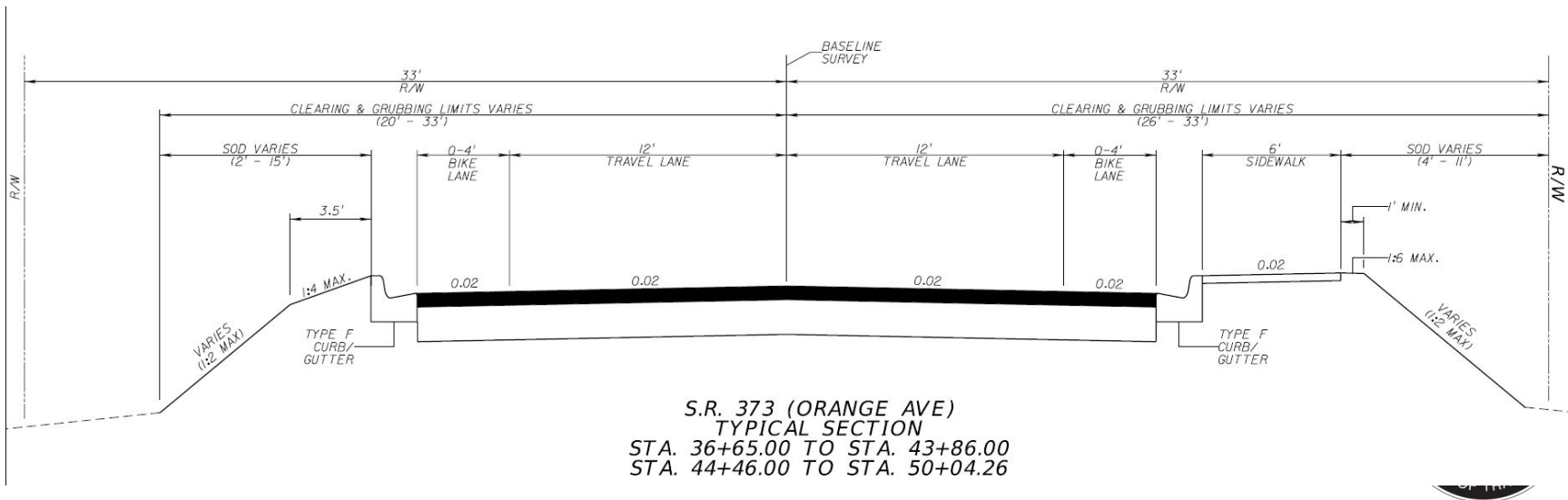


Precast Bridge Slab Units



- Orange Avenue Design

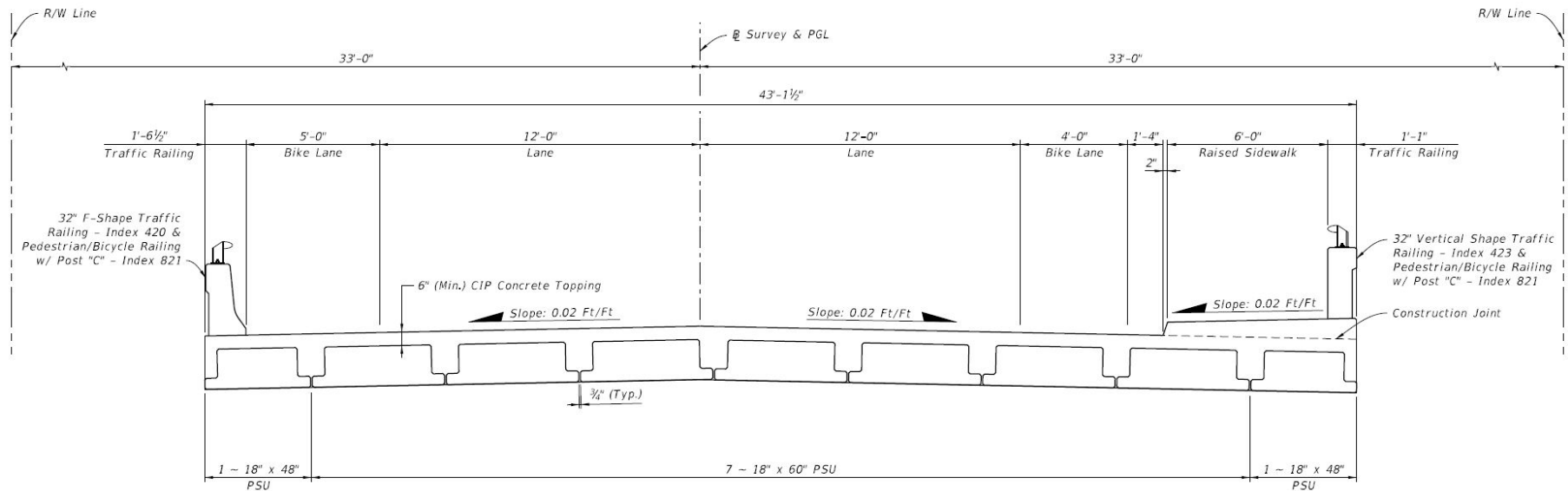
- Two 12' lanes and 4' bike lanes
- Curb & gutter
- 6' sidewalk on south side Orange Avenue
- Lower Orange Avenue by 6'



Project Bridge Details

Bridge Features

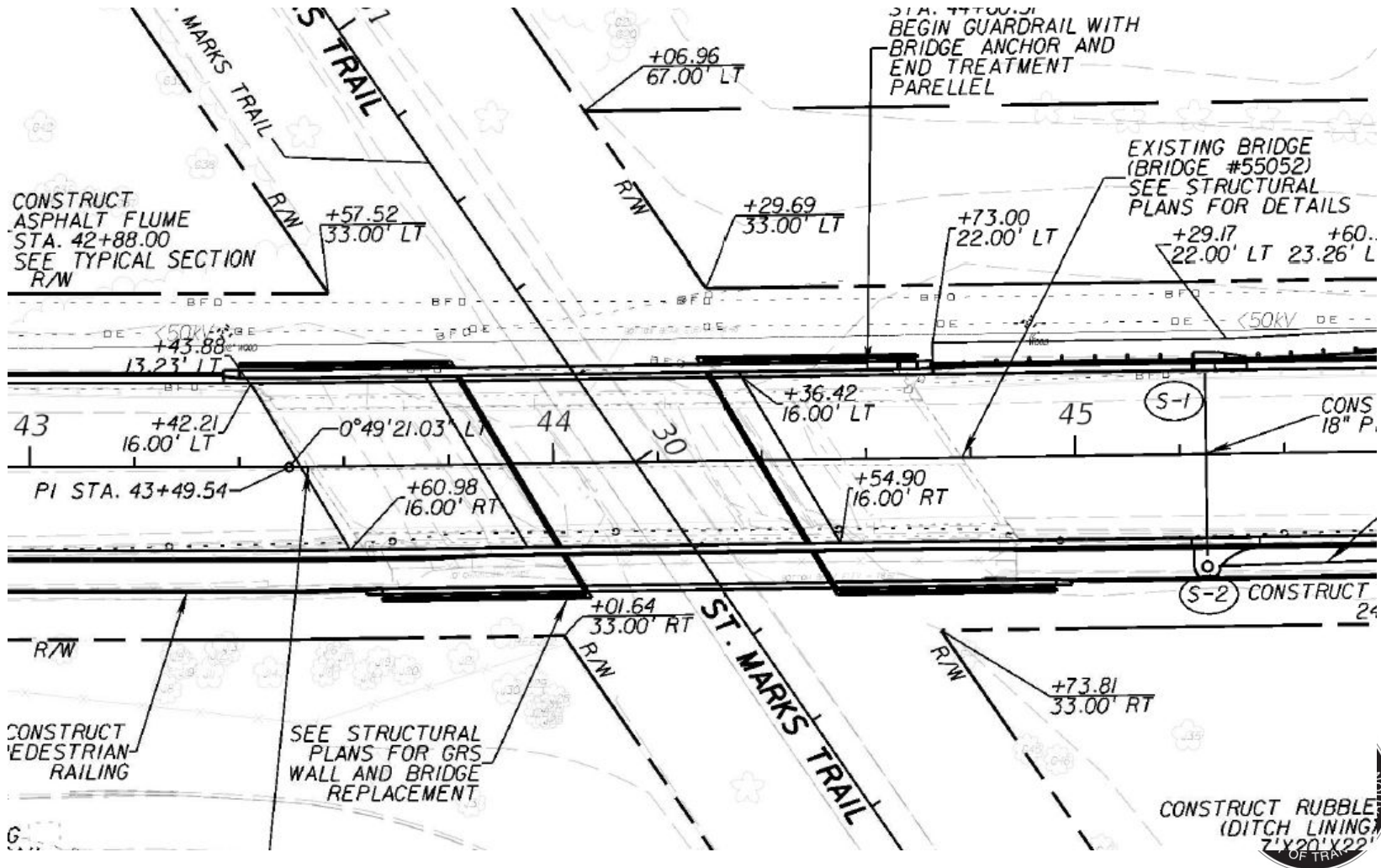
- 60' bridge (42' clear opening from Trail)
- 15'-4" vertical clearance



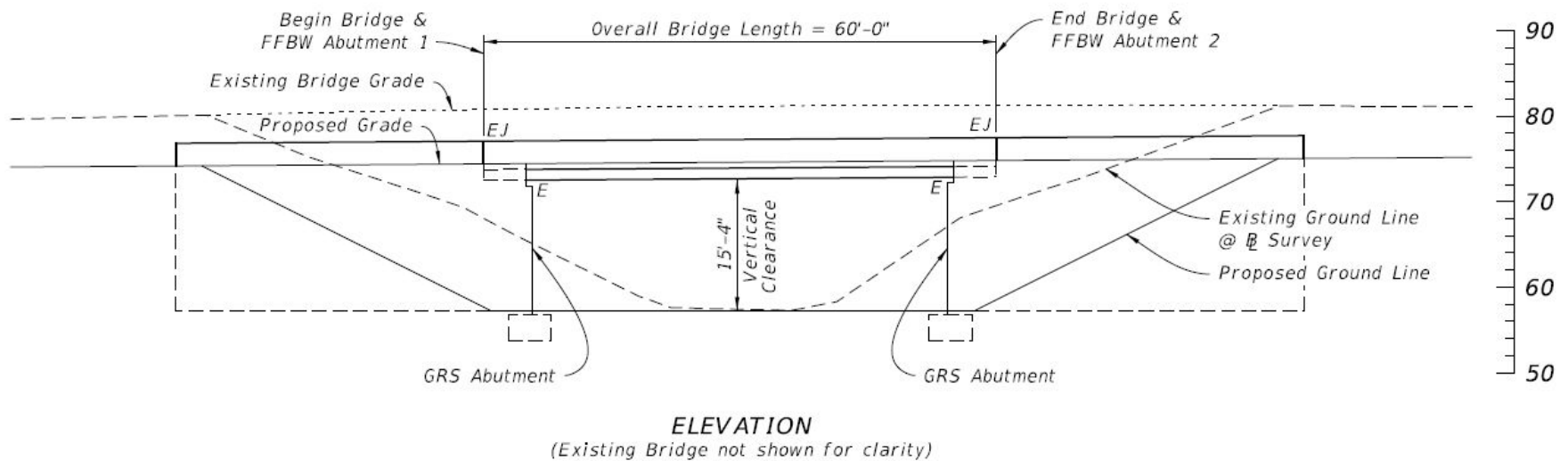
TYPICAL SECTION



Bridge Layout



Bridge Elevation View



Public Meeting Information

- Public Meeting planned for October 24 to share project information and gather input.



Next Step/ FDOT Request

FDOT requests formal support from CRTPA to detour Orange Avenue for up to 70 days to construct this project in the most expeditious manner possible.



Thank you,
Questions and Discussion

