



CONNECTING PEOPLE AND PLACES

Capital City^{to the} Sea *Trails*

Capital City^{to}the Sea *Trails*

CONNECTING PEOPLE AND PLACES



U.S. 98 TRAIL

Capital City^{to}the Sea Trails

CONNECTING PEOPLE AND PLACES



Project Description

- PD&E Study will evaluate the potential social and natural environmental impacts associated with development of a paved, shared-use path along U.S. 98 corridor in Wakulla County.
- U.S. 98 (S.R. 30) segment was ranked number one during the completion of the Master Plan.

Capital City^{to the}Sea Trails

CONNECTING PEOPLE AND PLACES



Study Area Segments*

Segment 1

- Boykin Road (West Terminus) to Woodville Highway (East Terminus)
- Approximately 16.9 miles

Segment 2

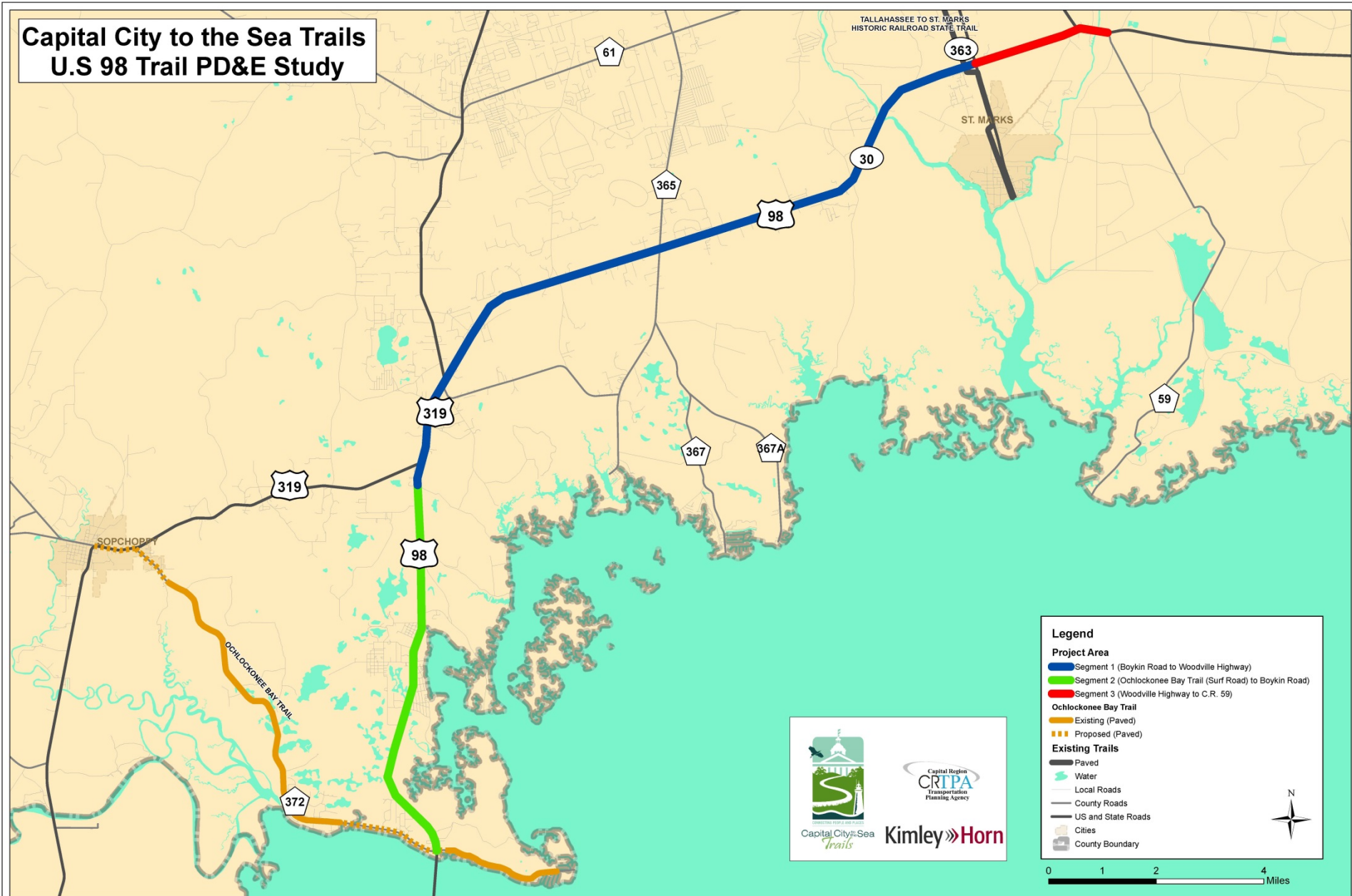
- Ochlockonee Bay Trail/Surf Road (West Terminus) to Boykin Road (East Terminus)
- Approximately 7.3 miles

Segment 3

- Woodville Highway (West Terminus) to C.R. 59 (East Terminus)
- Approximately 2.6 miles

*In priority order from Master Plan Ranking .

Capital City to the Sea Trails U.S 98 Trail PD&E Study



Capital City^{to the}Sea Trails

CONNECTING PEOPLE AND PLACES



Project Schedule

- 18 months will allow for
 - Further public involvement building on the efforts of the Master Plan
 - Refinement of the concepts
 - Environmental analysis
 - Coordination with agencies - FDOT and FHWA

Capital City^{to}the Sea *Trails*

CONNECTING PEOPLE AND PLACES



TROUT POND TRAIL NORTH

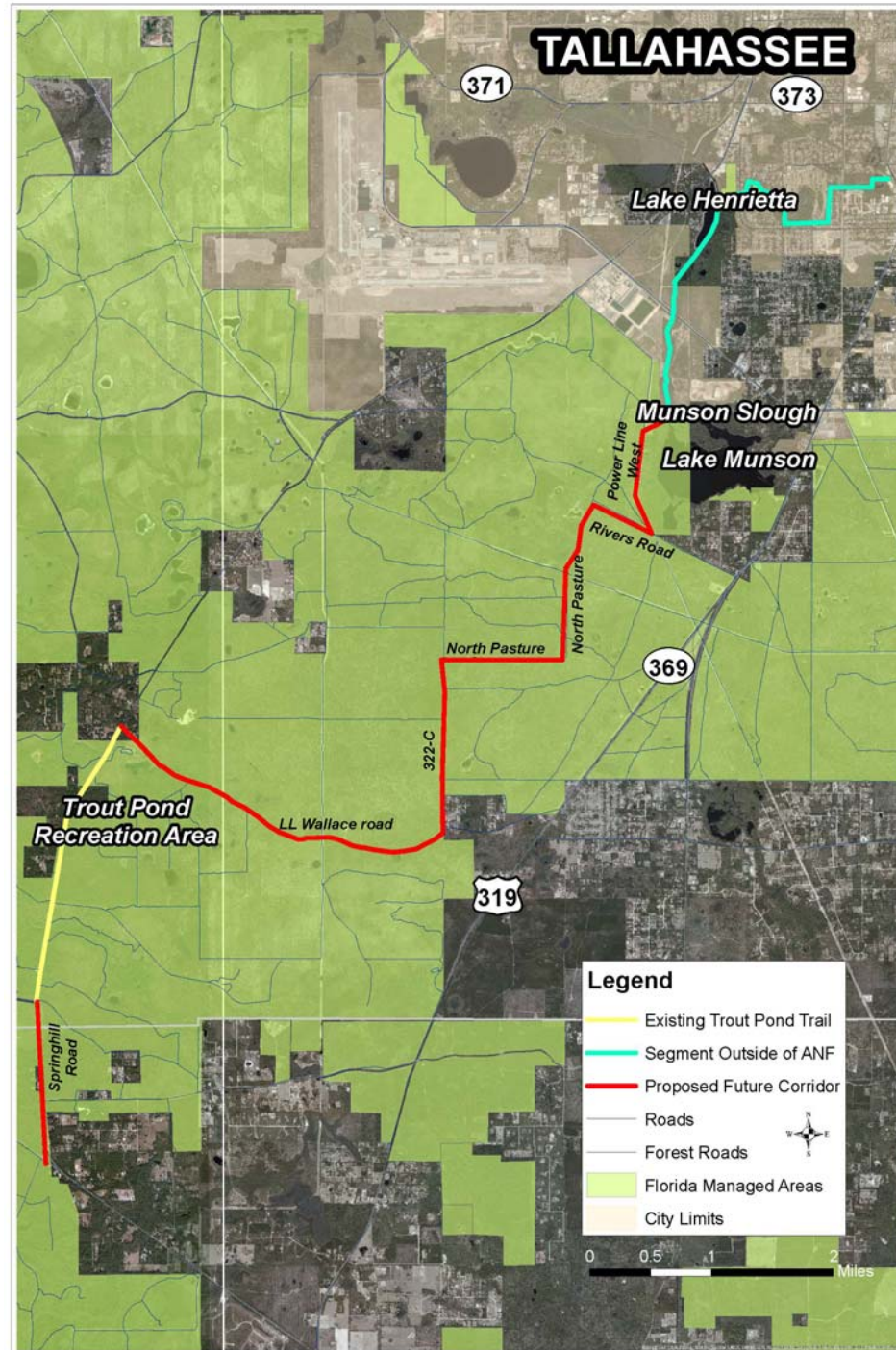
Capital City^{to}the Sea Trails

CONNECTING PEOPLE AND PLACES



Project Description

- This project will connect the existing Trout Pond Trail to Bloxham Cutoff Road (S.R. 267) and the City of Tallahassee.
- The lead agency for this segment of CC2ST is the Apalachicola National Forest (ANF) with the CRTPA providing support.



Capital City^{to}the Sea *Trails*

CONNECTING PEOPLE AND PLACES



QUESTIONS?