



WELCOME

PUBLIC ALTERNATIVES MEETING

THURSDAY, JUNE 4, 2026

ORCHARD POND GREENWAY

Tallahassee to Havana Trail from Old Bainbridge Road (C.R. 153) at Ochlockonee River (Leon/Gadsden County line) to the eastern trailhead on the Orchard Pond Greenway.
Leon County, Florida

FDOT WORK PROGRAM NUMBER: 455411-1

 **5:30 P.M. – 6:30 P.M. (EDT)**

 **LAKE JACKSON COMMUNITY CENTER**
3840 NORTH MONROE STREET, TALLAHASSEE

WWW.CRTPA.ORG/PROJECTS/TALLAHASSEE-TO-HAVANA-TRAIL-PDE-STUDY-LEON-COUNTY/





ORCHARD POND GREENWAY

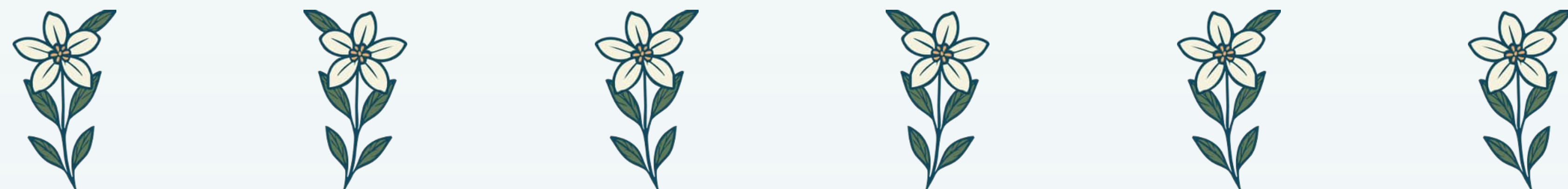
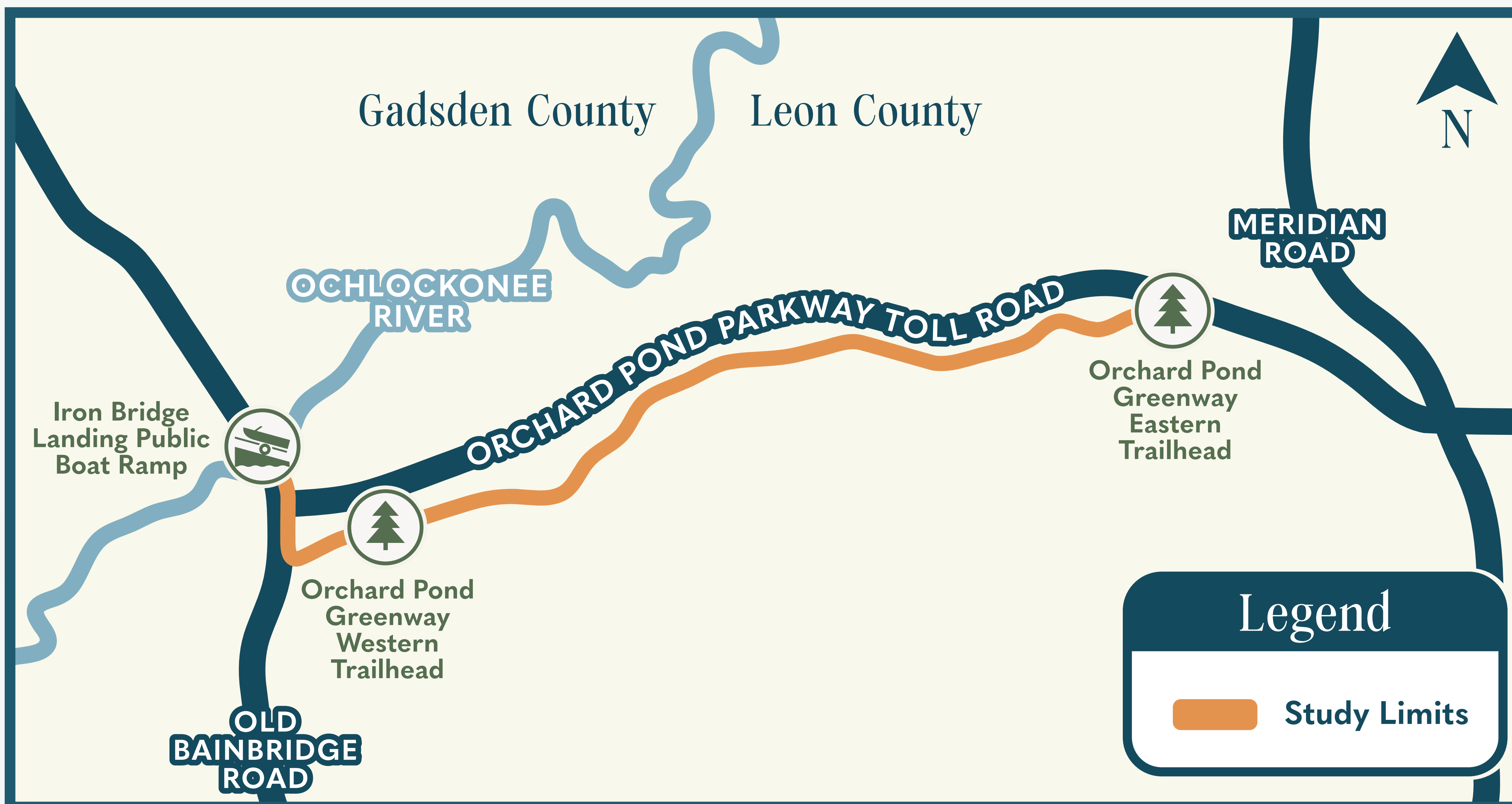
Tallahassee to Havana Trail from Old Bainbridge Road (C.R. 153) at Ochlockonee River (Leon/Gadsden County line) to the eastern trailhead on the Orchard Pond Greenway.
Leon County, Florida

FDOT WORK PROGRAM NUMBER: 455411-1

The Capital Region Transportation Planning Agency (CRTPA) is conducting an Environmental Impact and Alternatives Study (EIAS) to consider a paved multi-use trail. The proposed trail would extend along Old Bainbridge Road from the Leon County line to Orchard Pond Road, and along Orchard Pond Road from Old Bainbridge Road to the eastern trailhead of Orchard Pond Parkway in Leon County.

The project is intended to improve pedestrian and bicycle safety, increase mobility and recreational opportunities, enhance quality of life, and support the local economy. The EIAS will consist of developing and evaluating alternative trail alignments to determine a preferred alternative to satisfy the project goals.

The study area is shown on the map with the project limits highlighted.





ORCHARD POND GREENWAY

Tallahassee to Havana Trail from Old Bainbridge Road (C.R. 153) at Ochlockonee River (Leon/Gadsden County line) to the eastern trailhead on the Orchard Pond Greenway.
Leon County, Florida

FDOT WORK PROGRAM NUMBER: 455411-1

TITLE VI COMPLIANCE

The Capital Region Transportation Planning Agency (CRTPA) complies with various non-discrimination laws and regulations, including Title VI of the Civil Rights Act of 1964 and other amendments. Public participation is solicited without regard to race, color, national origin, age, sex, religion, disability, or family status.

Persons wishing to express concerns about Title VI may do so by contacting:



Greg Burke, AICP
Planning Manager

Capital Region Transportation Planning Agency

☎ (850) 891-8626

✉ greg.burke@talgov.com

📍 300 S. Adams Street, A-19, Tallahassee, FL 32301



ORCHARD POND GREENWAY

Tallahassee to Havana Trail from Old Bainbridge Road (C.R. 153) at Ochlockonee River (Leon/Gadsden County line) to the eastern trailhead on the Orchard Pond Greenway.
Leon County, Florida

FDOT WORK PROGRAM NUMBER: 455411-1

WHAT IS AN ENVIRONMENTAL IMPACT AND ALTERNATIVES STUDY (EIAS)?

An EIAS is a process to evaluate the social, economic, cultural, natural, and physical effects of a project. The EIAS will consist of developing and evaluating alternatives to determine a preferred alternative that satisfies the project goals. A key component of the process is public engagement, which includes sharing information with the community and providing meaningful opportunities for input.

WHY IS THIS PROJECT NEEDED?

This project is needed to improve pedestrian and cyclist safety, expand and connect trail networks, and increase recreational opportunities.

The purpose of this project is to extend the Tallahassee to Havana Trail and strengthen the overall trail network across the Capital Region. As part of the Florida Shared-Use Non-motorized (SUN) Trail Program, the project will also enhance multimodal connectivity and expand transportation and recreation options throughout the area.

PROJECT GOALS

1 IMPROVE PEDESTRIAN AND CYCLIST SAFETY

2 EXPAND AND CONNECT TRAIL NETWORKS

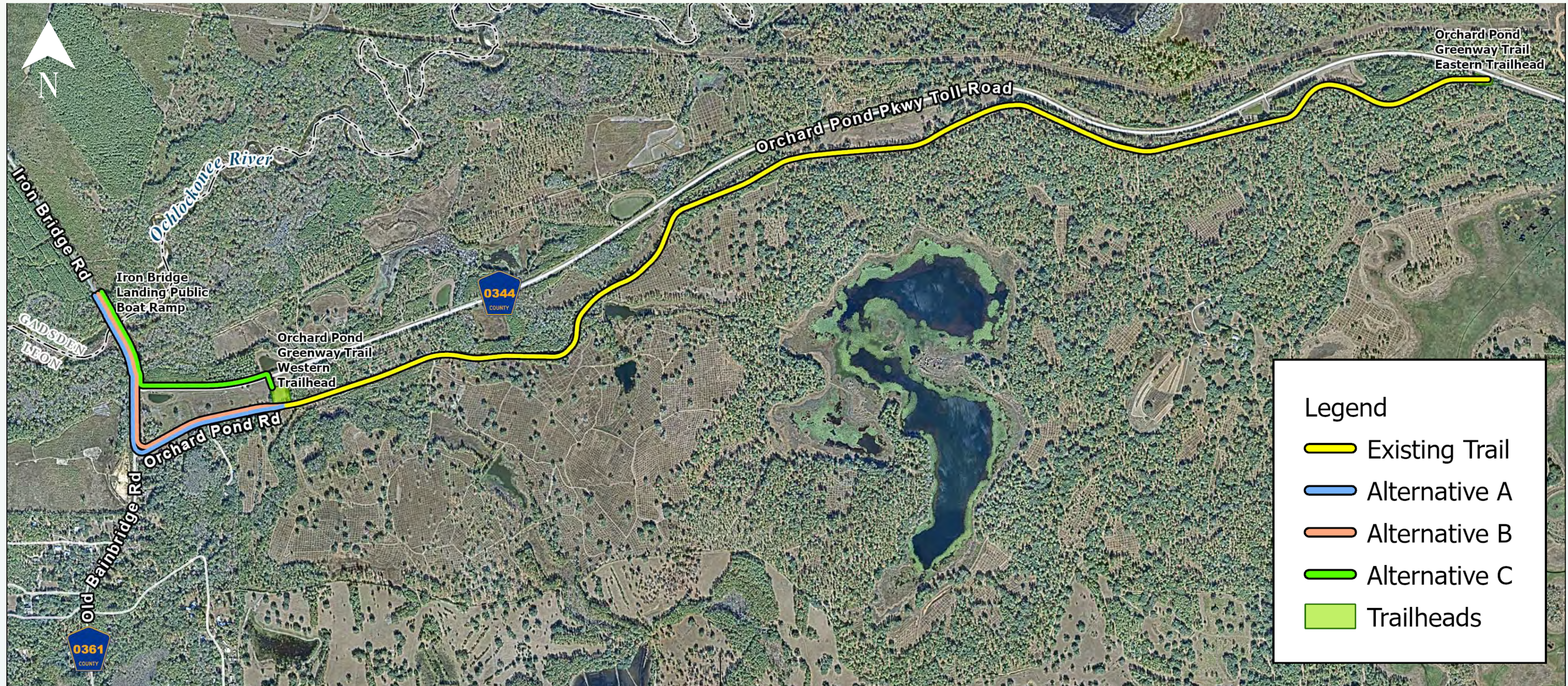
3 INCREASE RECREATIONAL OPPORTUNITIES

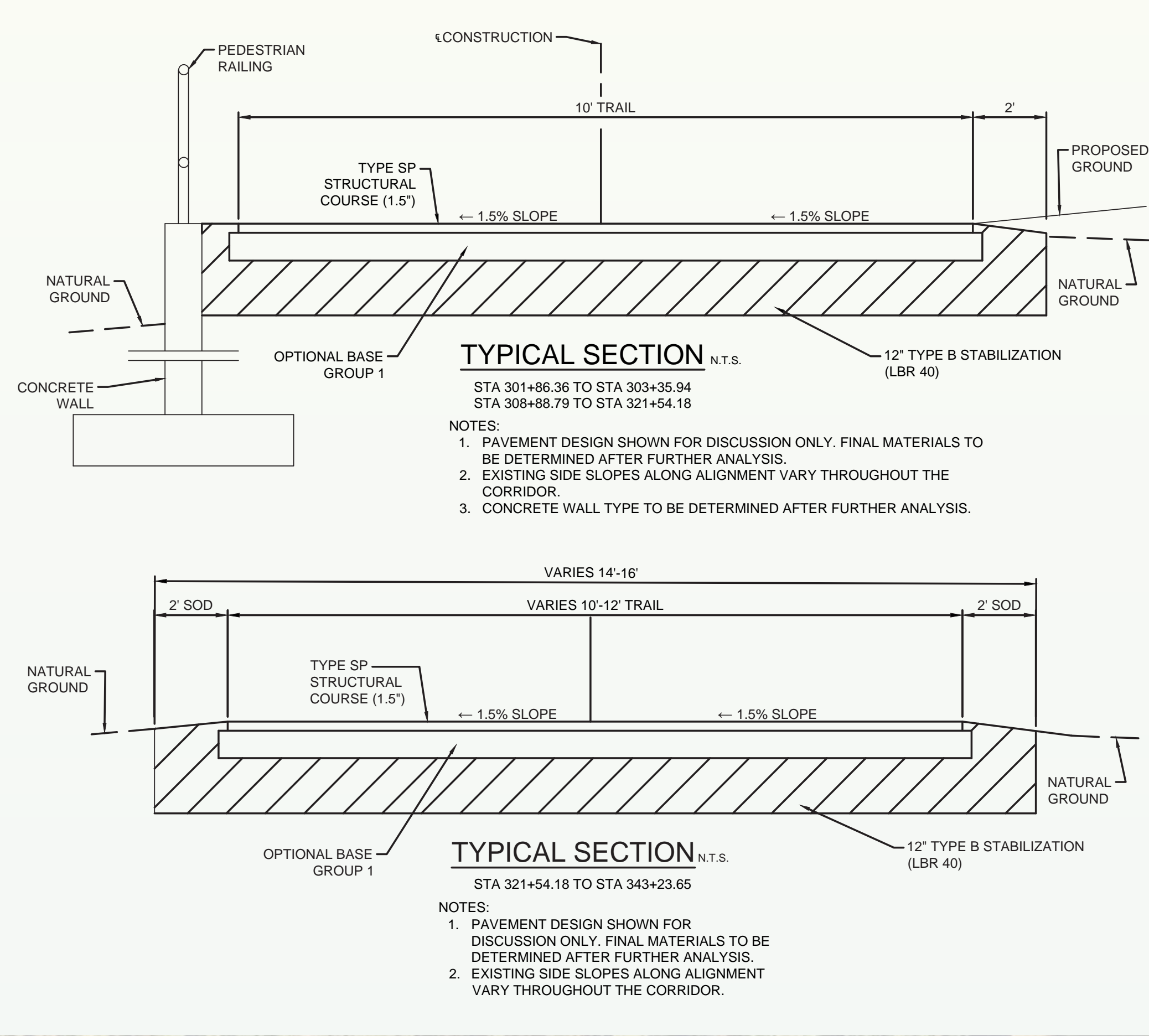
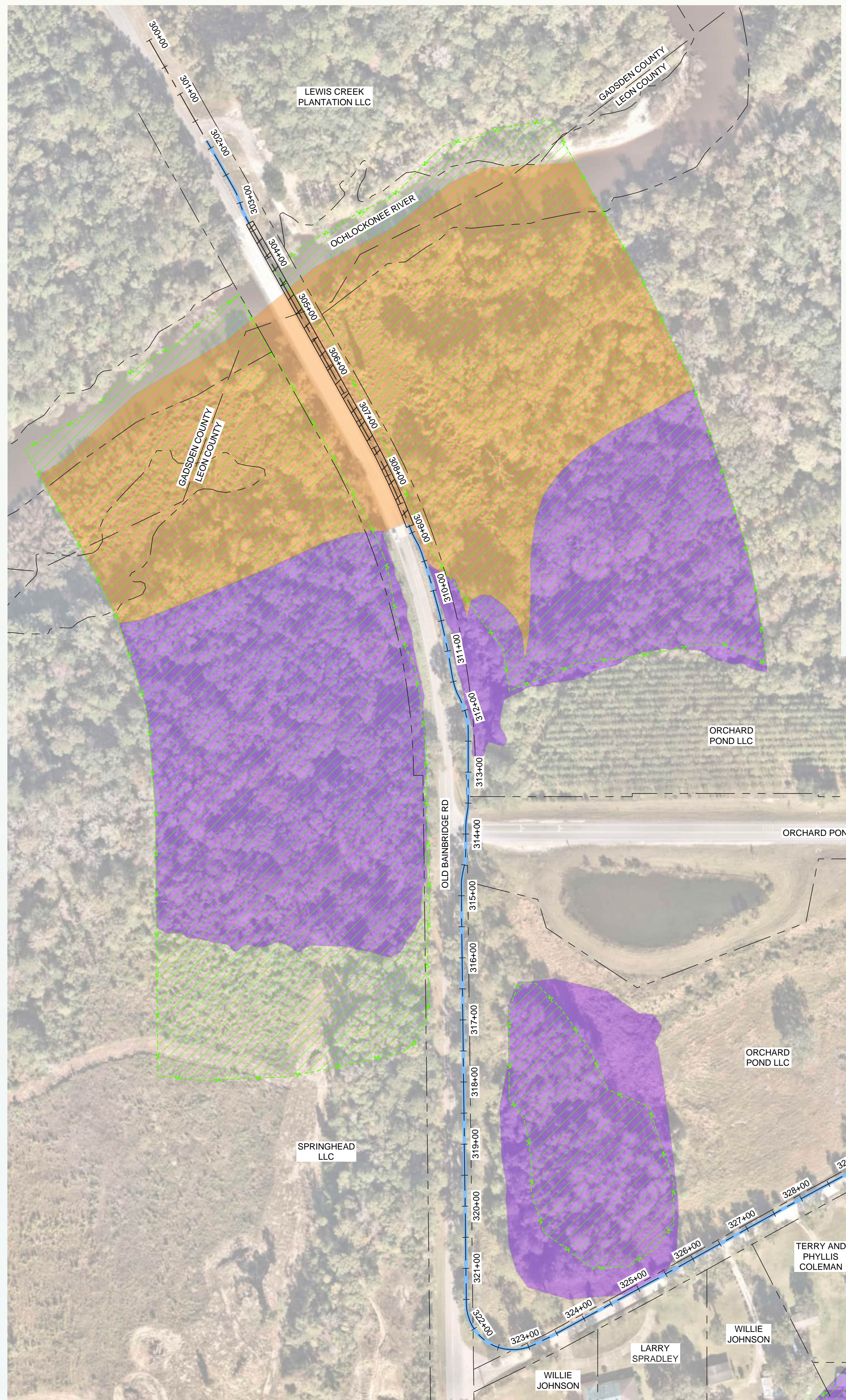


ORCHARD POND GREENWAY

Tallahassee to Havana Trail from Old Bainbridge Road (C.R. 153) at Ochlockonee River (Leon/Gadsden County line) to the eastern trailhead on the Orchard Pond Greenway.
Leon County, Florida

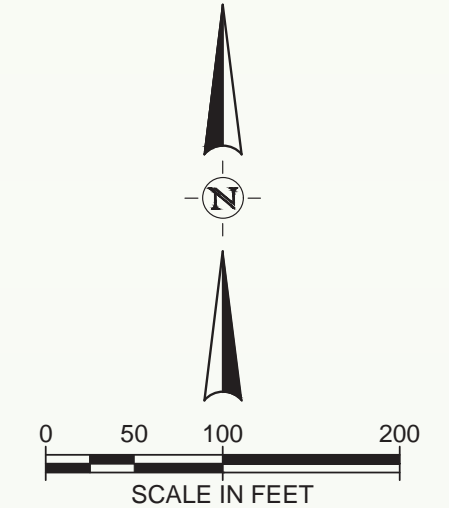
FDOT WORK PROGRAM NUMBER: 455411-1





LEGEND

- PROPERTY LINE
- COUNTY LINE
- PROPOSED TRAIL
- PROPOSED BRIDGE CROSSING
- GIS WETLANDS
- GIS 100 YR FLOODPLAIN
- GIS FLOODWAY



REVISION NO.	DATE	DESCRIPTION

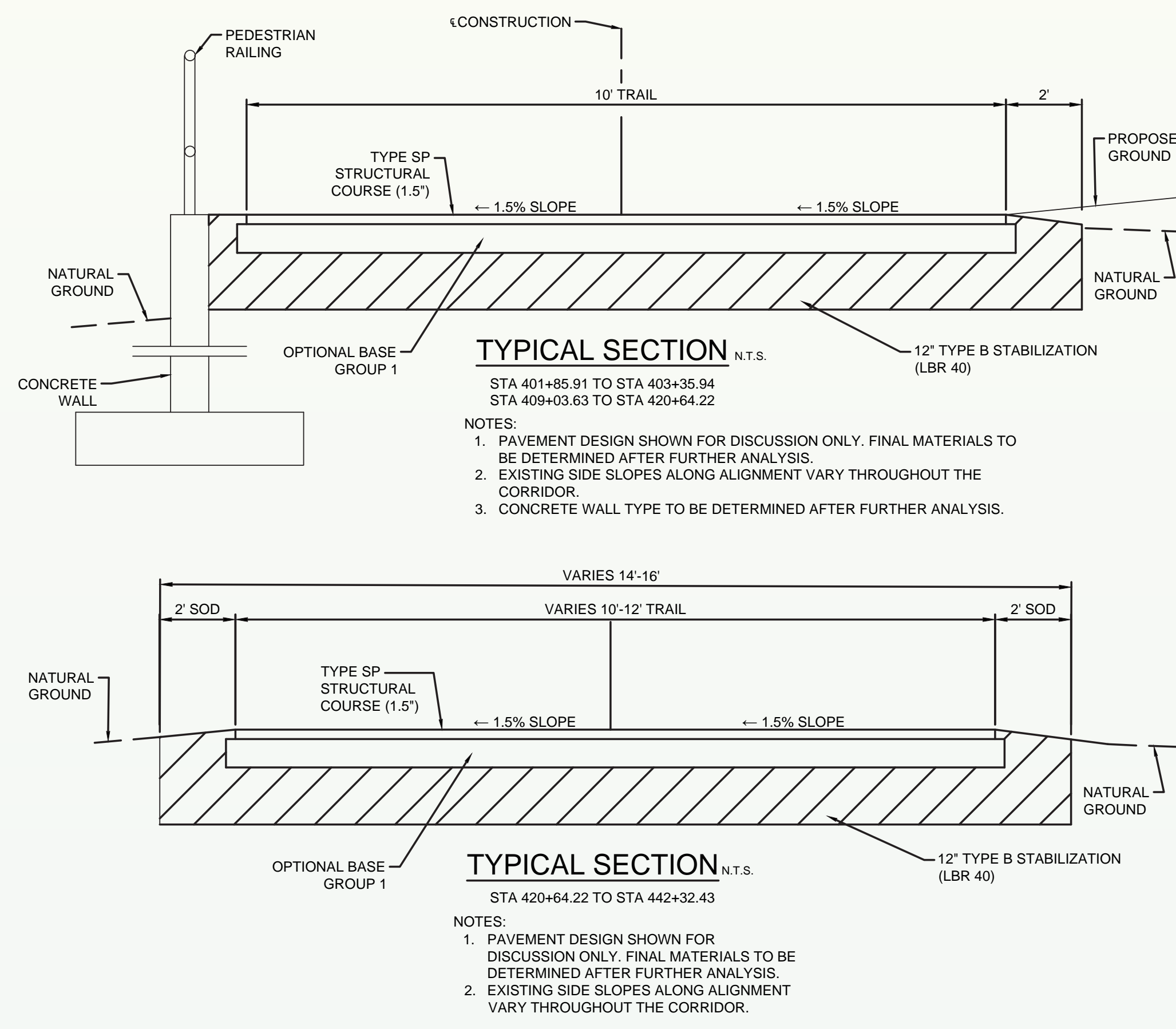
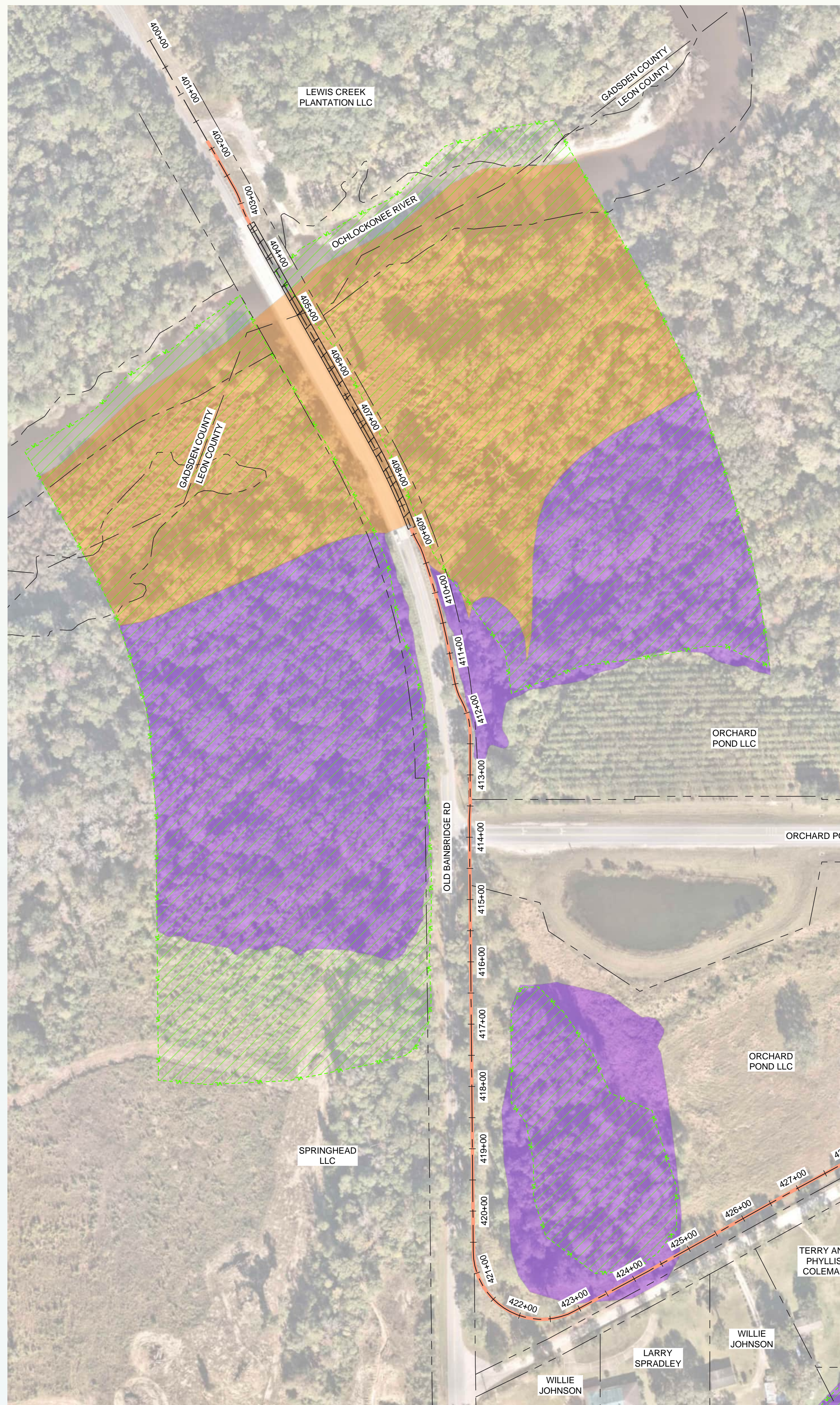
PRELIMINARY
 FOR INTERIM REVIEW ONLY
 THESE DOCUMENTS ARE FOR INTERIM REVIEW AND NOT INTENDED FOR REGULATORY APPROVAL, PERMIT BIDDING OR CONSTRUCTION PURPOSES. THEY WERE PREPARED BY OR UNDER THE SUPERVISION OF:

MELISSA L. PENNINGTON 91022
 NAME FL LICENSE NO.
 5/18/2026
 DATE
 33380 FL
 FIRM / BUSINESS NO. STATE

PROJECT NO.: 56194.002
 ISSUED: 05/2026
 DRAWN BY: RMT
 CHECKED BY: MLP
 SCALE: 1" = 100'
 SHEET TITLE:

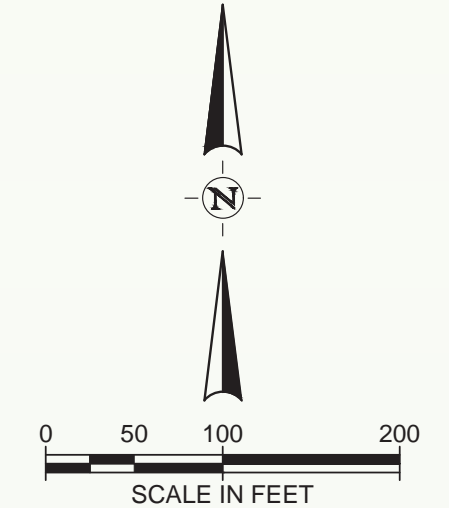
ALTERNATIVE A





LEGEND

- PROPERTY LINE
- COUNTY LINE
- PROPOSED TRAIL
- PROPOSED BRIDGE CROSSING
- GIS WETLANDS
- GIS 100 YR FLOODPLAIN
- GIS FLOODWAY



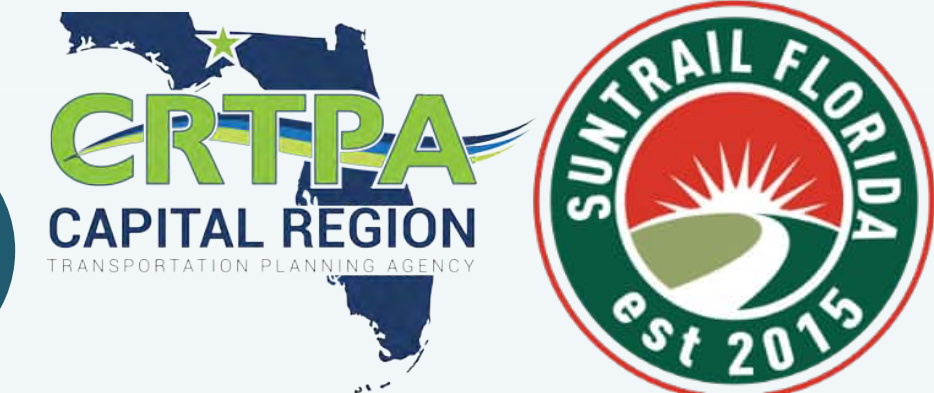
REVISION NO.	DATE	DESCRIPTION

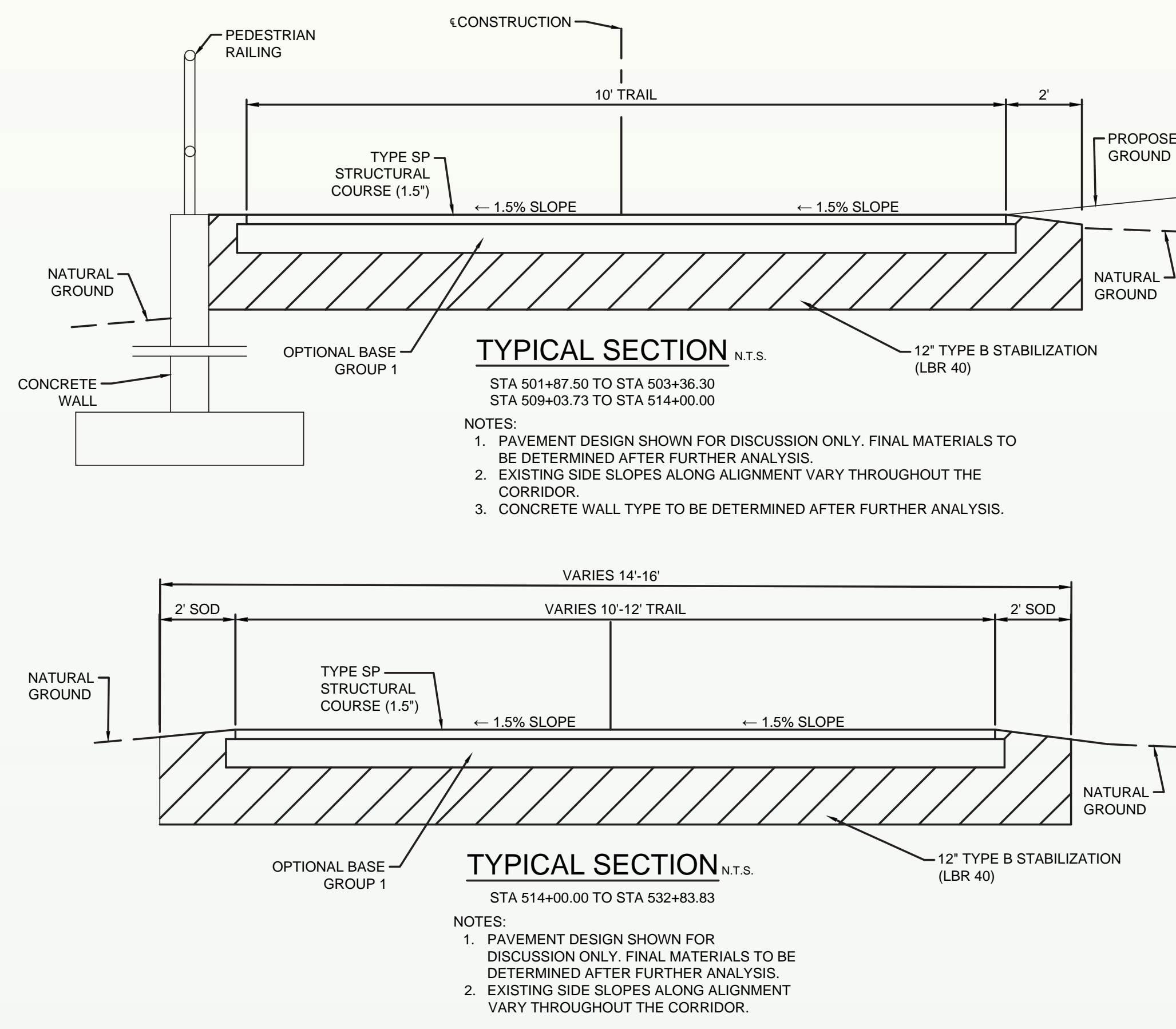
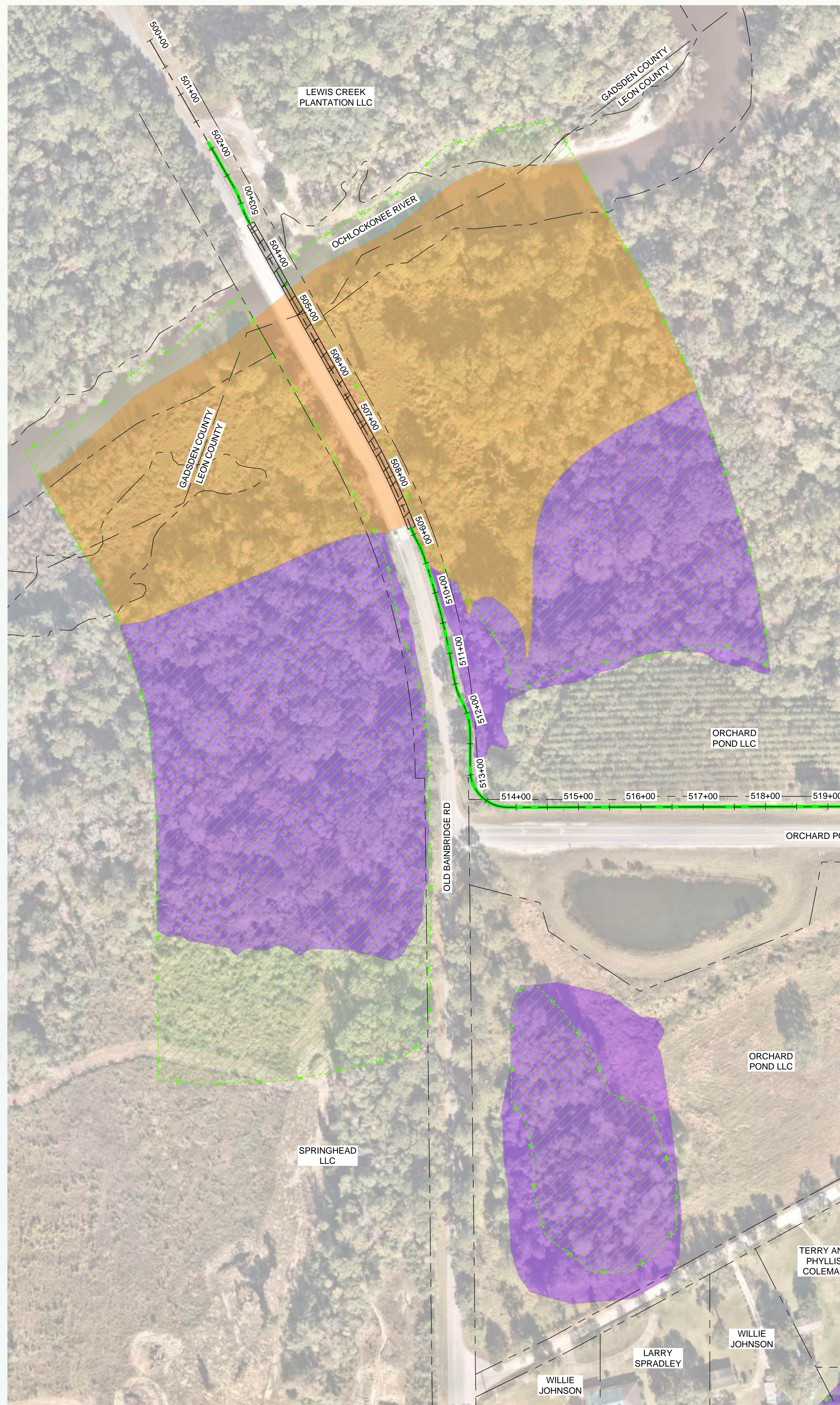
PRELIMINARY
 FOR INTERIM REVIEW ONLY

THESE DOCUMENTS ARE FOR INTERIM REVIEW AND NOT INTENDED FOR REGULATORY APPROVAL, PERMIT BIDDING OR CONSTRUCTION PURPOSES. THEY WERE PREPARED BY OR UNDER THE SUPERVISION OF:

MELISSA L. PENNINGTON 91022
 NAME FL LICENSE NO.
 5/18/2026
 DATE
 33380 FL
 FIRM / BUSINESS NO. STATE

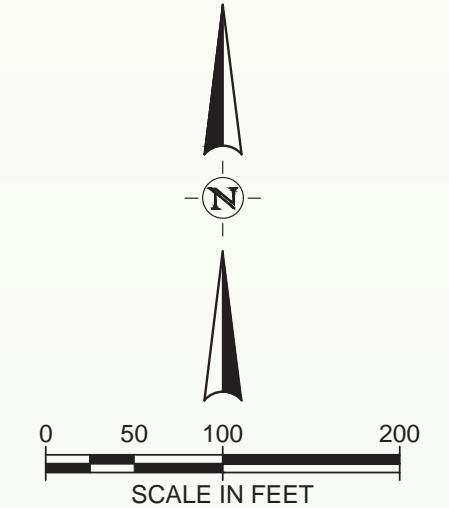
PROJECT NO.: 56194.002
 ISSUED: 05/2026
 DRAWN BY: RMT
 CHECKED BY: MLP
 SCALE: 1" = 100'
 SHEET TITLE:
 ALTERNATIVE B





LEGEND

- PROPERTY LINE
- COUNTY LINE
- PROPOSED TRAIL
- PROPOSED BRIDGE CROSSING
- GIS WETLANDS
- GIS 100 YR FLOODPLAIN
- GIS FLOODWAY



REVISION NO.	DATE	DESCRIPTION

PRELIMINARY
 FOR INTERIM REVIEW ONLY

THESE DOCUMENTS ARE FOR INTERIM REVIEW AND NOT INTENDED FOR REGULATORY APPROVAL, PERMIT BIDDING OR CONSTRUCTION PURPOSES. THEY WERE PREPARED BY OR UNDER THE SUPERVISION OF:

MELISSA L. PENNINGTON 91022
 NAME FL LICENSE NO.
 5/18/2026
 DATE
 33380 FL
 FIRM / BUSINESS NO. STATE

PROJECT NO.: 56194.002
 ISSUED: 05/2026
 DRAWN BY: RMT
 CHECKED BY: MLP
 SCALE: 1" = 100'
 SHEET TITLE:

ALTERNATIVE C





ORCHARD POND GREENWAY

Tallahassee to Havana Trail from Old Bainbridge Road (C.R. 153) at Ochlockonee River (Leon/Gadsden County line) to the eastern trailhead on the Orchard Pond Greenway.
Leon County, Florida

FDOT WORK PROGRAM NUMBER: 455411-1



A 10-foot multi-use trail along the east side of Old Bainbridge Road, separated from the roadway by a 7-foot grass shoulder and guardrail.



A 10 to 12-foot paved multi-use trail from the eastern trailhead to the western trailhead.

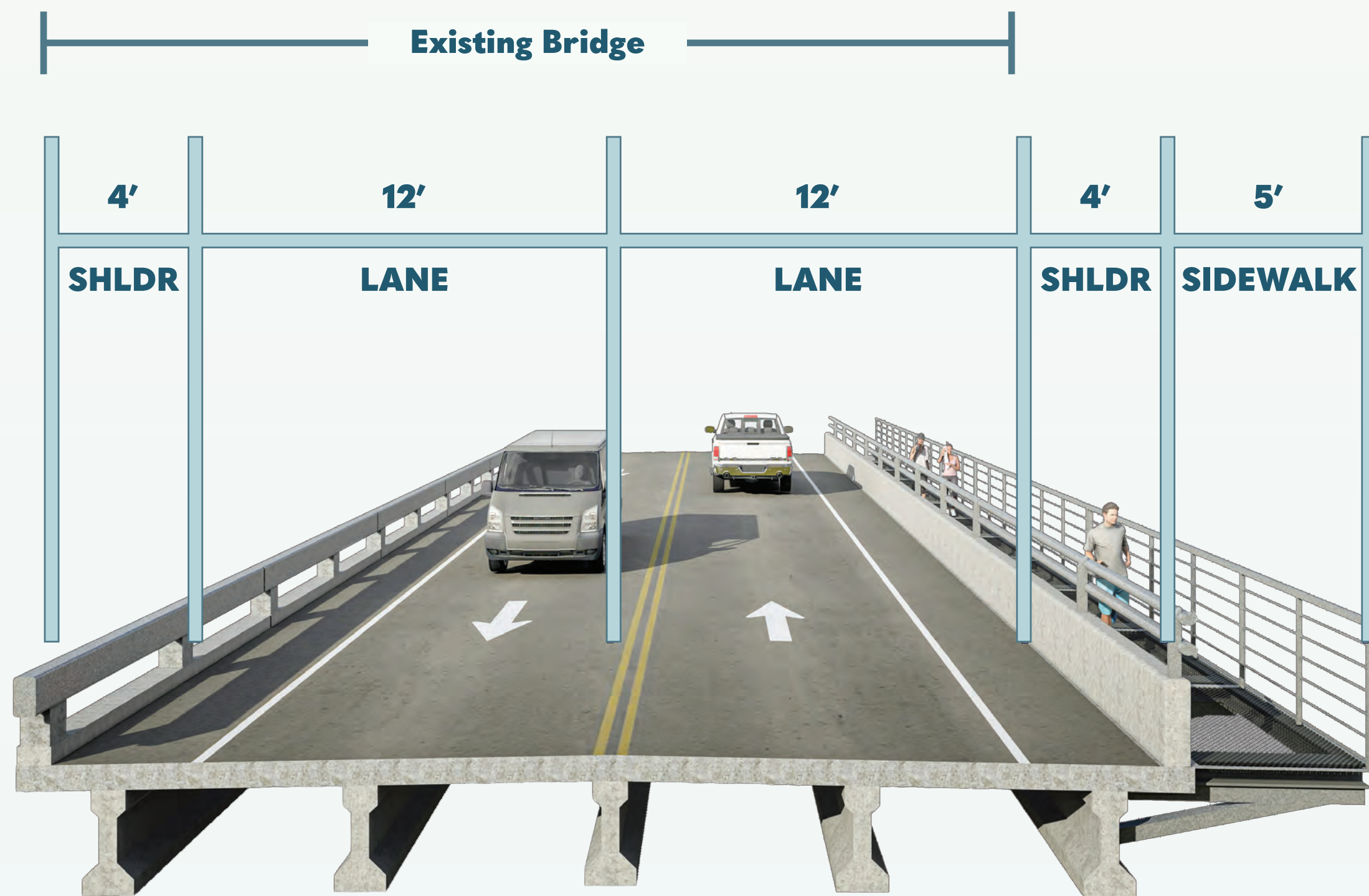


ORCHARD POND GREENWAY

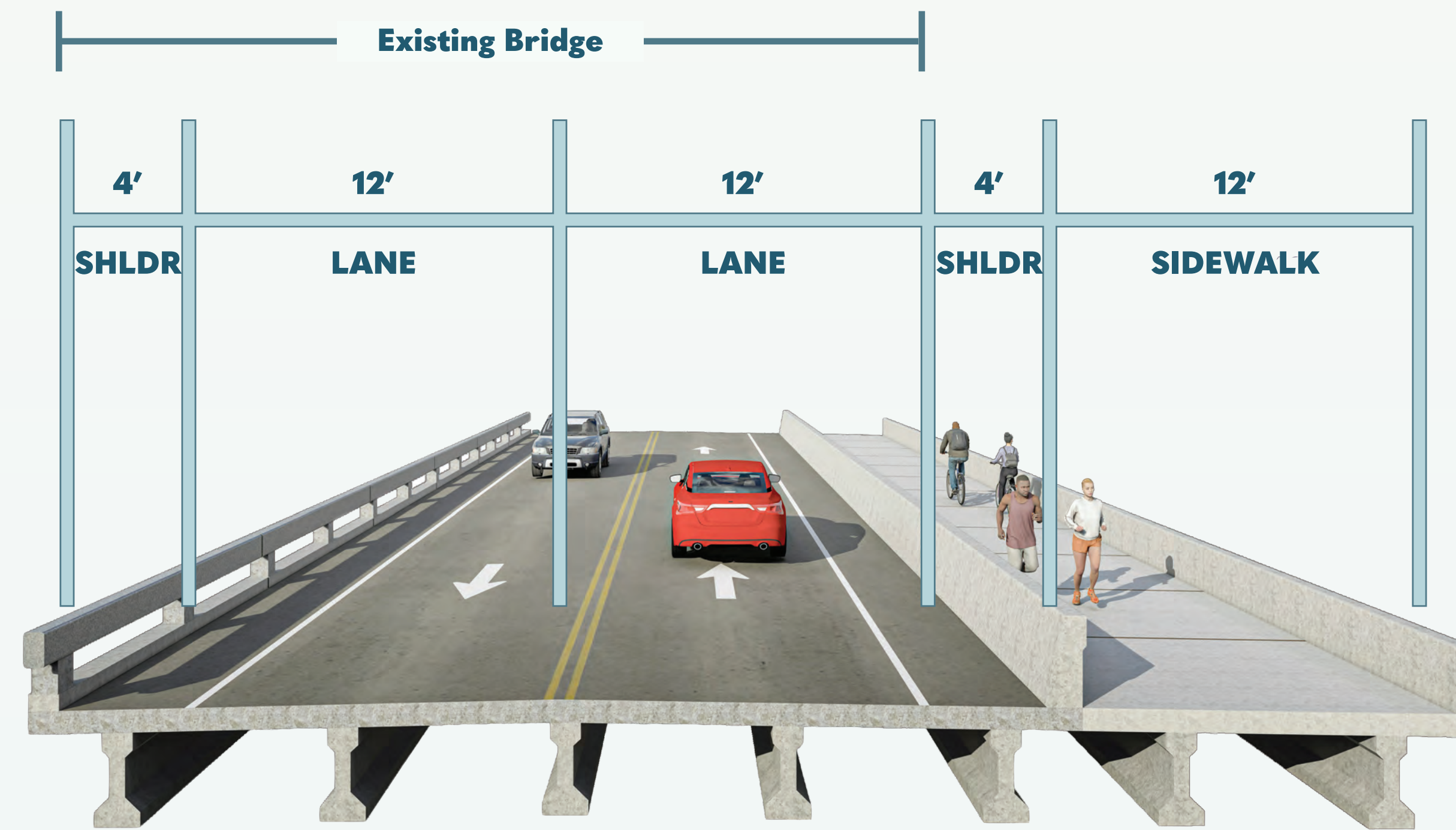
Old Bainbridge Road from the Leon County line to Orchard Pond Road and along Orchard Pond Road from Old Bainbridge Road to the Orchard Pond Parkway Eastern Trailhead.

Leon County

WORK PROGRAM NUMBER: 455411-1



ALTERNATIVE 1
Cantilever Bridge Deck Panels



ALTERNATIVE 2
Bridge Widening



ALTERNATIVE 3
Separate Multi-Use Trail Bridge



ORCHARD POND GREENWAY

Tallahassee to Havana Trail from Old Bainbridge Road (C.R. 153) at Ochlockonee River (Leon/Gadsden County line) to the eastern trailhead on the Orchard Pond Greenway.
Leon County, Florida

FDOT WORK PROGRAM NUMBER: 455411-1

PROJECT IMPACTS				
PROJECT GOALS	No-Build	Alignment Alternative A	Alignment Alternative B	Alignment Alternative C
Improve Pedestrian and Cyclist Safety	No	Yes	Yes	Yes
Expand and Connect Trail Networks	No	Yes	Yes	Yes
Increase Recreational Opportunities	No	Yes	Yes	Yes
SOCIAL AND ECONOMIC EFFECTS				
Number of Business Relocations	0	0	0	0
Number of Residential Relocations	0	0	0	0
Number of Affected Parcels	0	1	1	1
Area of Needed Private Property	0	0.09 Acres	1.84 Acres	0.08 Acres
CULTURAL RESOURCES EFFECTS				
Number of Archaeological/Historic Sites	0	2	2	2
Number of Section 4(f) Sites	0	1	1	1
NATURAL RESOURCES EFFECTS				
Wetland Impact Area	0	0.10 Acres	0.16 Acres	0.08 Acres
Protected Species within Study Area (Affected)	0	0	0	0
PHYSICAL RESOURCE EFFECTS				
Number of Potential Contamination Sites	0	0	0	0
PERMITTING				
Permitting Difficulty (Low/Medium/High)	None	Low	Low	Low
COST ESTIMATE (\$ MILLIONS)				
Engineering (Plans and Permitting)	\$0.00	\$0.77	\$0.67	\$0.64
Construction*	\$0.00	\$6.38	\$5.58	\$5.33
Construction Engineering and Inspection (CEI)	\$0.00	\$0.64	\$0.56	\$0.53
Total Cost Estimate	\$0.00	\$7.78	\$6.81	\$6.50

"Evaluation Matrix Includes Cantilevered Bridge Option for All Shown Values and Impacts"





ORCHARD POND GREENWAY

Tallahassee to Havana Trail from Old Bainbridge Road (C.R. 153) at Ochlockonee River (Leon/Gadsden County line) to the eastern trailhead on the Orchard Pond Greenway.
Leon County, Florida

FDOT WORK PROGRAM NUMBER: 455411-1

PROJECT SCHEDULE



TRANSPORTATION DEVELOPMENT PROCESS





ORCHARD POND GREENWAY

Tallahassee to Havana Trail from Old Bainbridge Road (C.R. 153) at Ochlockonee River (Leon/Gadsden County line) to the eastern trailhead on the Orchard Pond Greenway.
Leon County, Florida

FDOT WORK PROGRAM NUMBER: 455411-1

We invite you to participate by providing your comments and ideas on the proposed improvements. You can get involved in various ways—through phone, mail, or email. All comments provided, or postmarked, on or before Tuesday, June 30, 2026, will become part of the official project record.

For more information or to comment, please contact:



Greg Burke, AICP
Planning Manager

Capital Region Transportation Planning Agency

☎ (850) 891-8626

✉ greg.burke@talgov.com

📍 300 S. Adams Street, A-19
Tallahassee, FL 32301



*Scan to Take
The Survey*

