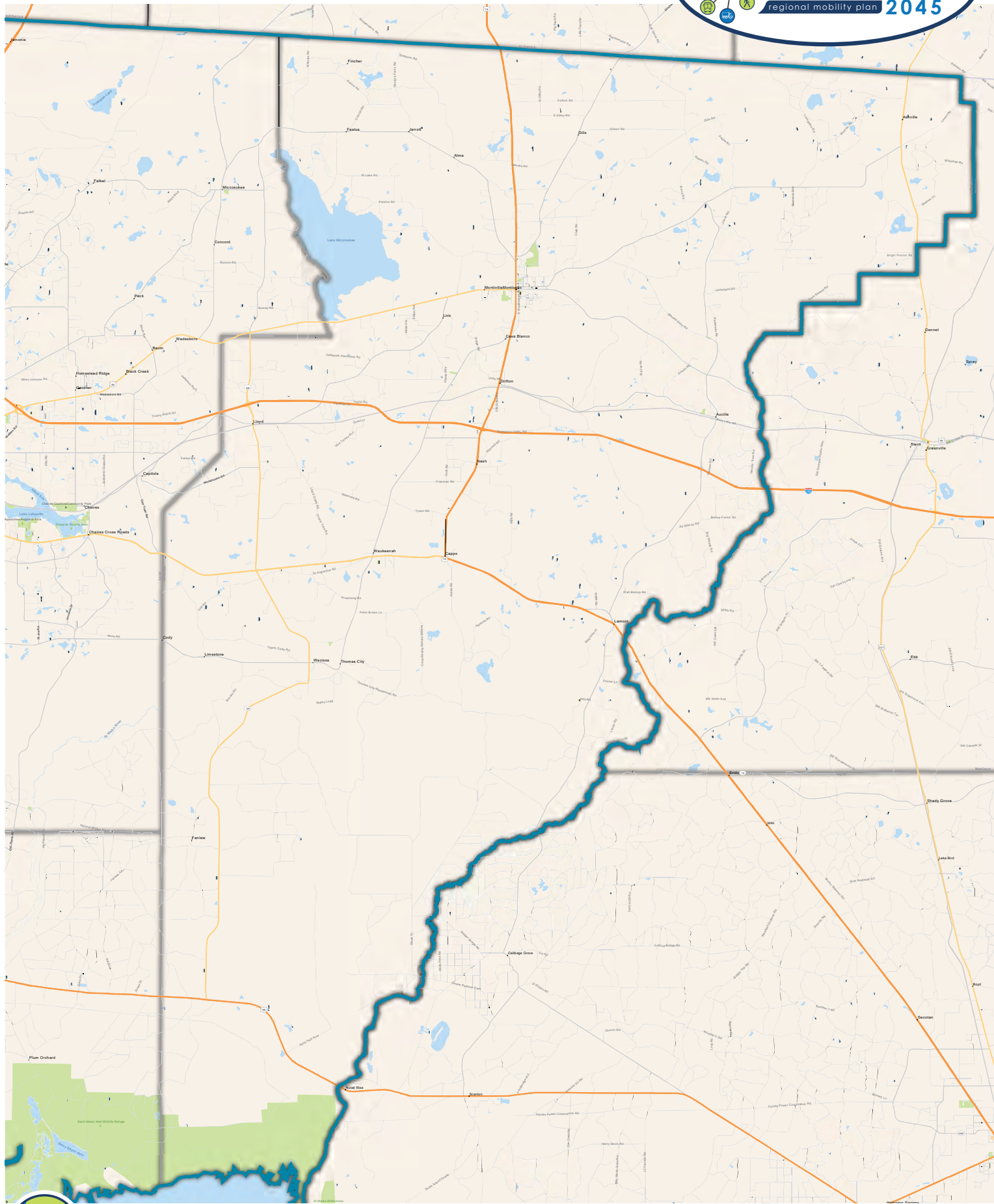
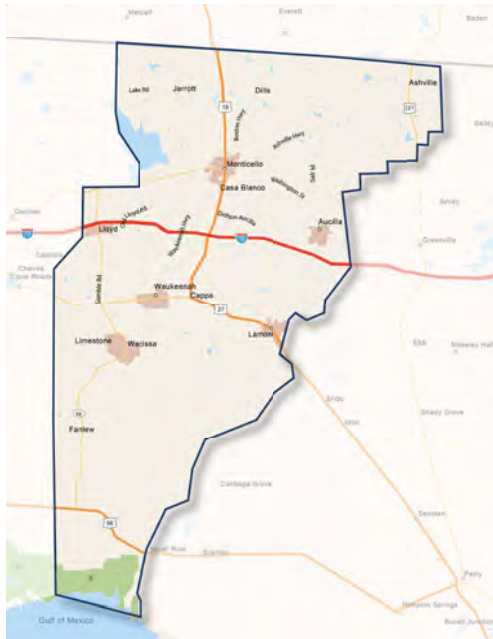


# JEFFERSON COUNTY MAP



# Jefferson County Snapshot

**connections**  
regional mobility plan **2045**



## Commuting Means

**94.8%** Car, Truck, or Van

**84.4%** Drove Alone  
**10.3%** Carpooled

## Avg. Commute Time

**28.7**  
minutes



**21.2%** Bachelors Degree or Higher  
(2017)



## Zero Vehicle Access

**5.5%**  
of households



**14,085**  
Total Population  
(2017)

**46**  
Median Age  
(CRTPA Region, 40)



**2,605**  
Total Jobs  
(2015)



**5,702**  
Total Households  
(2017, Avg. HH Size 2.03)

## MEDIAN HOUSEHOLD INCOME

|        | 2010     | 2017     |
|--------|----------|----------|
| COUNTY | \$41,359 | \$47,599 |
| CRTPA  | \$43,720 | \$48,809 |
| STATE  | \$47,661 | \$50,883 |



**15.1%**  
Increase  
since 2010

## PERCENT BELOW THE POVERTY LINE

|        | 2010  | 2017  |
|--------|-------|-------|
| COUNTY | 18.7% | 13.9% |
| CRTPA  | 20.2% | 17.9% |
| STATE  | 13.8% | 15.5% |

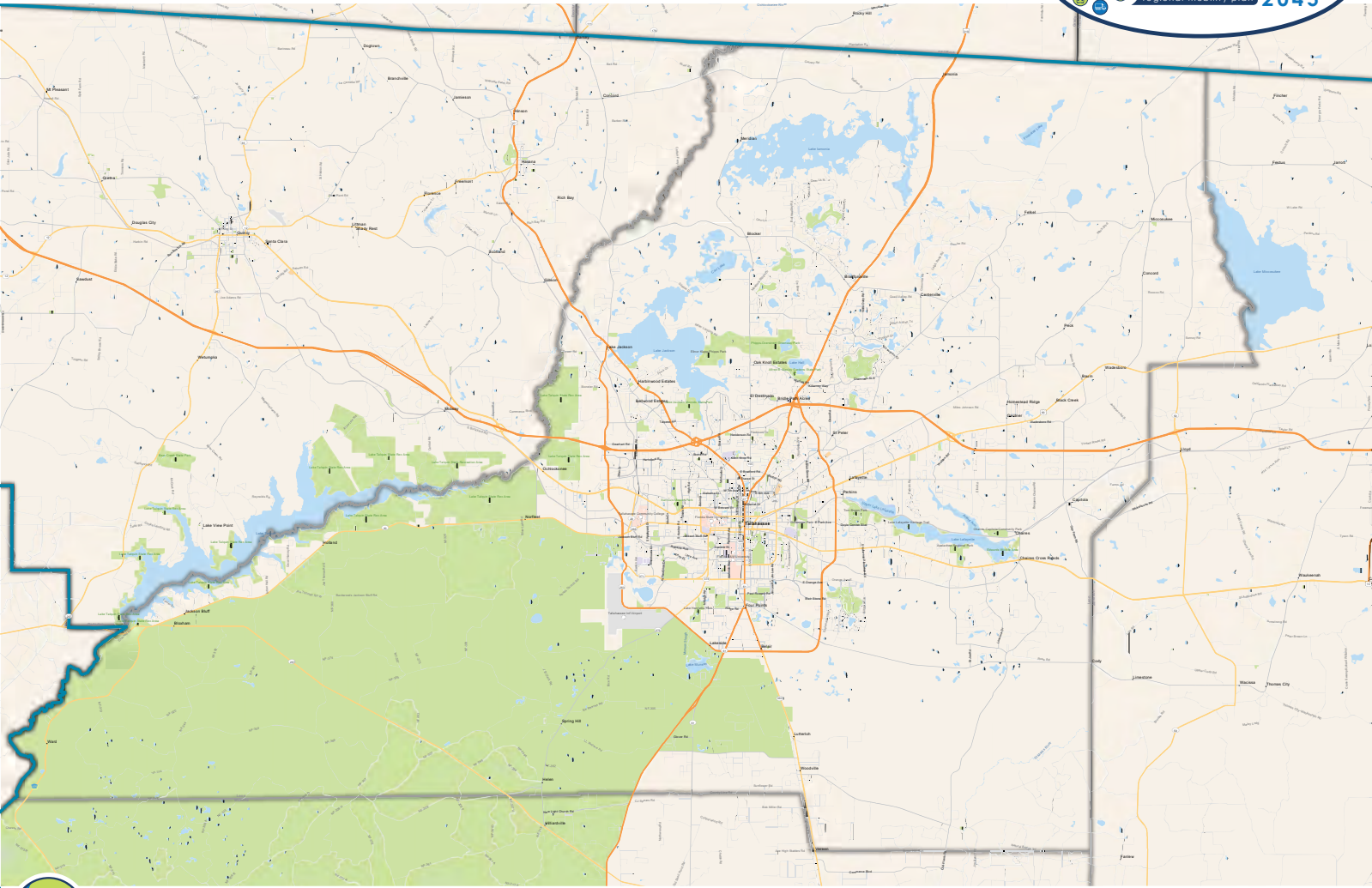


**25.6%**  
Decrease  
since 2010

**1,531** Commute IN  
**1,074** Stay and Work  
**4,362** Commute OUT



# LEON COUNTY MAP



# Leon County Snapshot



**285,890**  
Total Population  
(2017)



**157,687**  
Total Jobs  
(2015)



**112,373**  
Total Households  
(2017, Avg. HH Size 2.42)



**45.5%**  
Bachelors Degree  
or Higher  
(2017)



## Commuting Means

**90.1%** Car, Truck, or Van



**80.7%**  
Drove Alone



**9.4%**  
Carpooled

## Avg. Commute Time

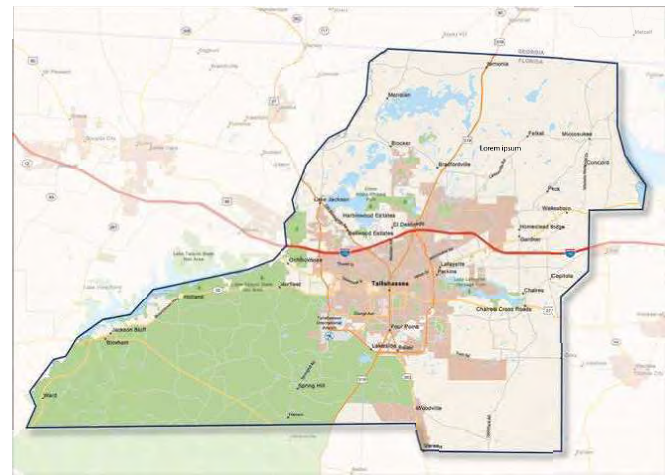
**20.8**  
minutes



## Zero Vehicle Access

**3.1%**  
of households

**30.5**  
Median Age  
(CRTPA Region, 40)



## MEDIAN HOUSEHOLD INCOME

|        | 2010     | 2017     |
|--------|----------|----------|
| COUNTY | \$44,490 | \$49,941 |
| CRTPA  | \$43,720 | \$48,809 |
| STATE  | \$47,661 | \$50,883 |



**12.3%**  
Increase  
since 2010

## PERCENT BELOW THE POVERTY LINE

|        | 2010  | 2017  |
|--------|-------|-------|
| COUNTY | 22.0% | 20.5% |
| CRTPA  | 20.2% | 17.9% |
| STATE  | 13.8% | 15.5% |



**7.1%**  
Decrease  
since 2010





## *What is a Long Range Transportation Plan?*

A Long Range Transportation Plan...

- Helps identify what we need to spend transportation dollars on
- Identifies transportation-related priorities for the region
- Updated every 5 years
- 25-year horizon vision document

