

April 18, 2023



## AGENDA ITEM 6B

### **SR 267/BLOXHAM CUTOFF TRAIL FEASIBILITY STUDY**

**TYPE OF ITEM:** Action

#### **STATEMENT OF ISSUE**

This item provides an update related to the development of a feasibility study evaluating a connection between Wakulla Springs State Park and the St. Marks Trail.

#### **BACKGROUND**

Initiated in the summer of 2022, the SR 267/Bloxham Cutoff Trail Feasibility Study is evaluating a multi-use trail connection from the Edward Ball Wakulla Springs State Park Entrance to the St. Marks Trail (a distance of 4.78 miles). This trail connection is identified in the CRTPA's Capital City-to-the-Sea Trails Plan and Wakulla County's Bicycle, Pedestrian and Blueways Master Plan.

Development of a multi-use trail connection between Wakulla Springs State Park and the St. Marks Trail will enhance regional trail connectivity between the popular state park and the St. Marks Trail as well as the US 98 Coastal Trail. Efforts associated with the study include the development of an existing conditions assessment that includes the identification of environmental and manmade constraints along the corridor. The existing conditions assessment will include an evaluation of possible trail alternatives within the study's limits.

To date, coordination and public involvement efforts have been limited to stakeholders including the Florida Department of Environmental Protection, Florida Department of Agriculture and Consumer Services (Florida Forest Service), and the Friends of Edward Ball Wakulla Springs State Park.

#### **ATTACHMENT**

Attachment 1: Draft Presentation



Capital Region Transportation Planning Agency



# SR 267 (Bloxham Cutoff Road) Trail Feasibility Study

CRTPA Board Meeting

*April 18, 2023*

# AGENDA



## Background

- Location
- Purpose
- Planning Consistency



## Efforts to Date

- Wakulla Springs UMP
- Mapping Data
- Alternatives
- Typical Section
- Intersection Analysis
- Bridge over McBride Slough
- Stakeholders
- Schedule

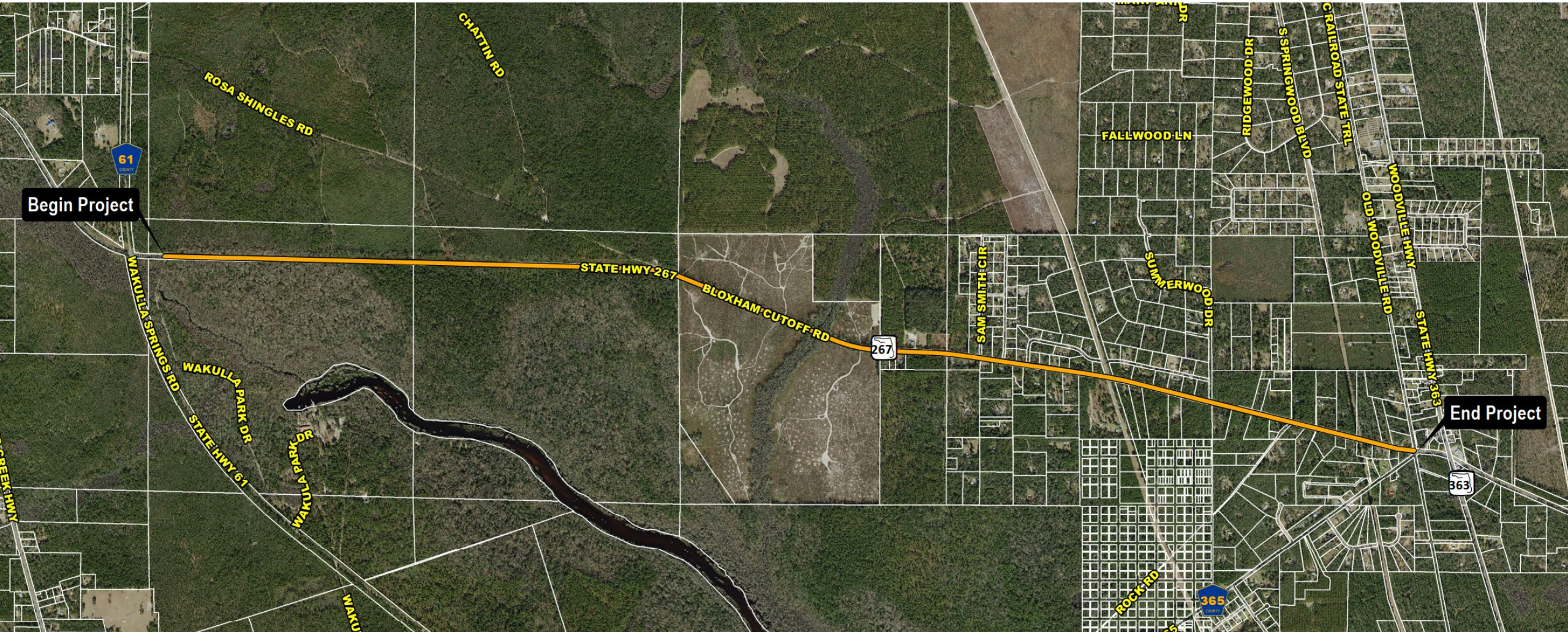


## Discussion





# SR 267 (BLOXHAM CUTOFF ROAD) TRAIL FEASIBILITY STUDY







# SR 267 (BLOXHAM CUTOFF ROAD) TRAIL FEASIBILITY STUDY



## LOCATION

Connects Edward Ball Wakulla  
Spring State Park entrance to St.  
Marks Trail (4.74 miles)



## PURPOSE

Identify & evaluate reasonable  
alternatives to carry forward to a  
preferred trail route



## PLANNING CONSISTENCY

Trail connection contained within:

- Capital City to the Sea Trail Plan
- Wakulla Co. Bicycle/Pedestrian & Blueway Master Plan
- Edward Ball Wakulla Springs State Park Unit  
Management Plan (trail portion along service road)



**Park Entrance**  
**New Traffic Pattern**  
**Multi Use Trail Connection**  
**Bicycle and Pedestrian Improvements**

**Ranger Station**  
**Replace Ranger Station**

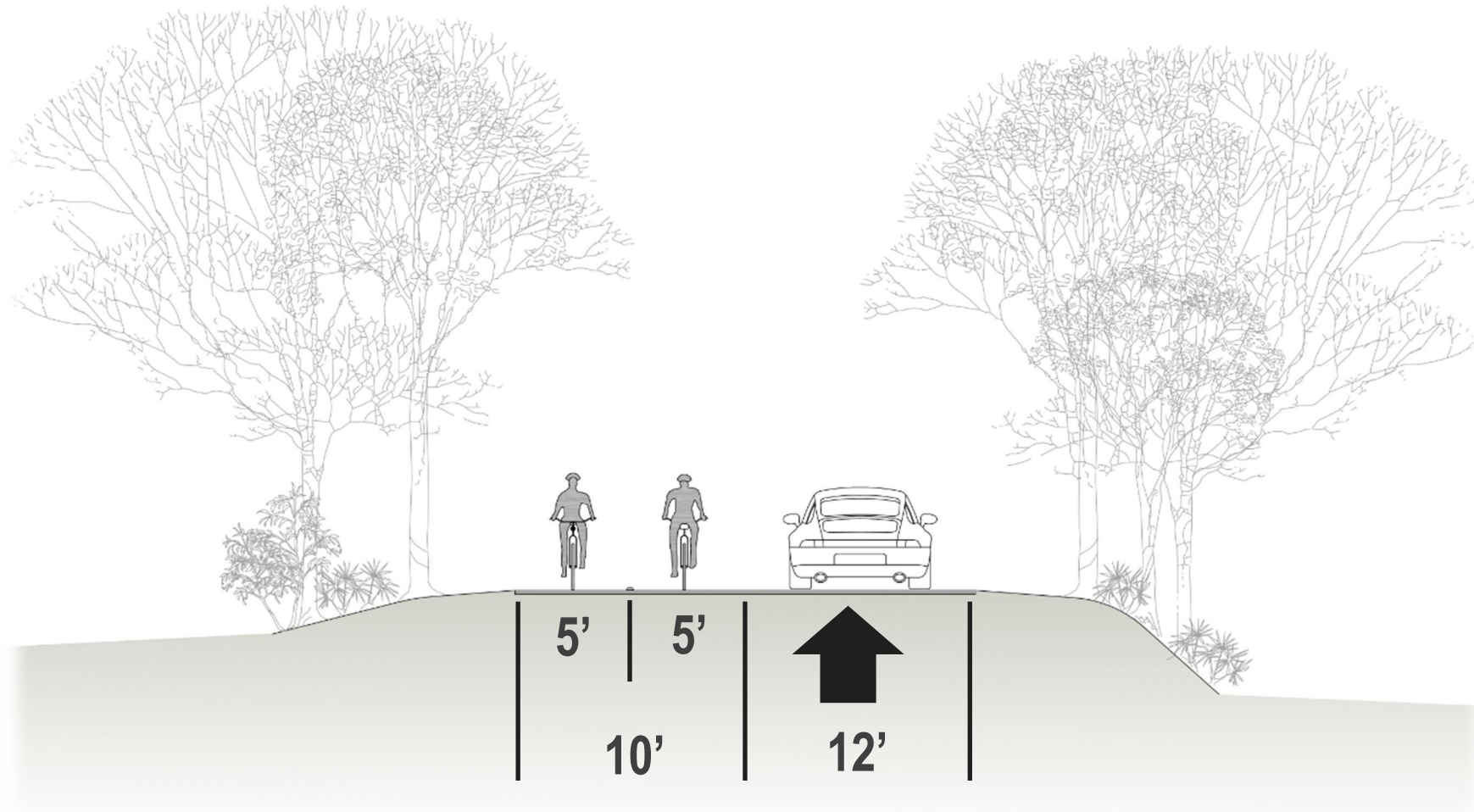
**Employee Entrance**  
**Fence and Gate Improvements**  
**Proposed New Exit Location for Visitors**  
**Add Pedestrian Gate**

**Cherokee Sink**  
**Add Restroom**

**Rosa Shingles Trailhead**  
**Potential Connection**

**Wakulla Springs State Park**  
**Unit Management Plan**





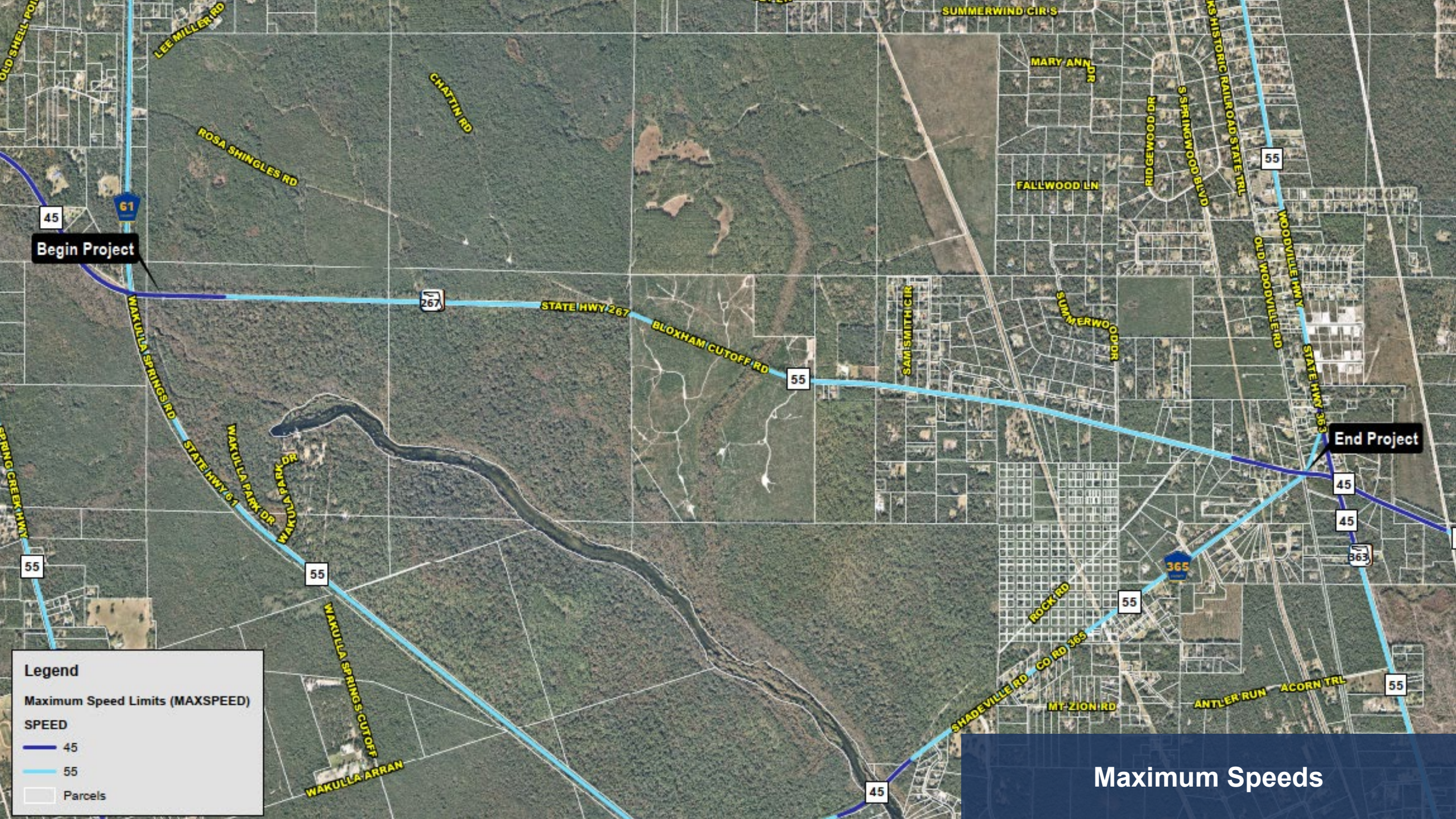


# MAPPING DATA

- Speed limit
- Public lands
- Environmental
  - FEMA flood zones
  - Cultural resources
  - Priority natural resources

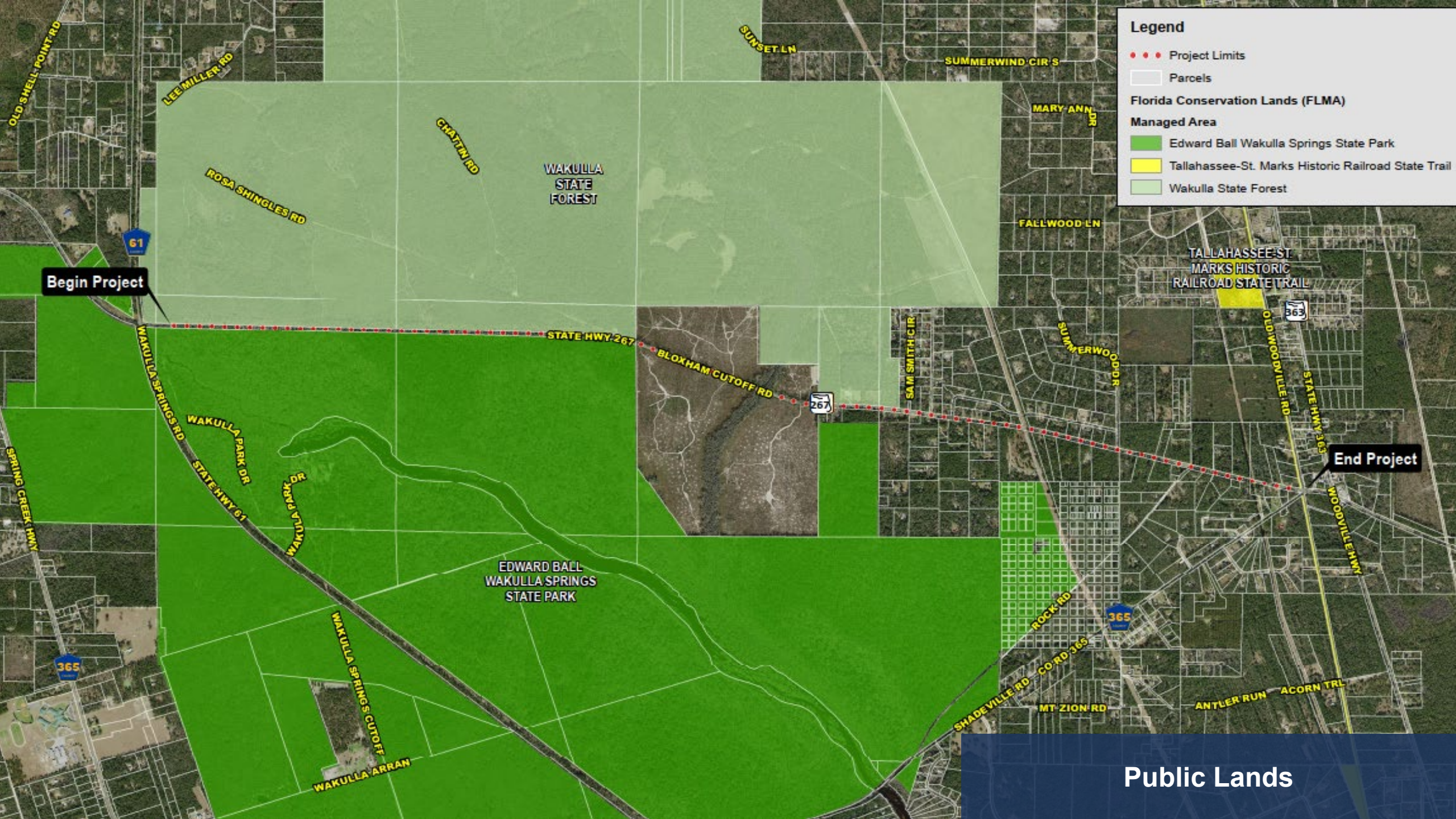






Maximum Speeds





**Legend**

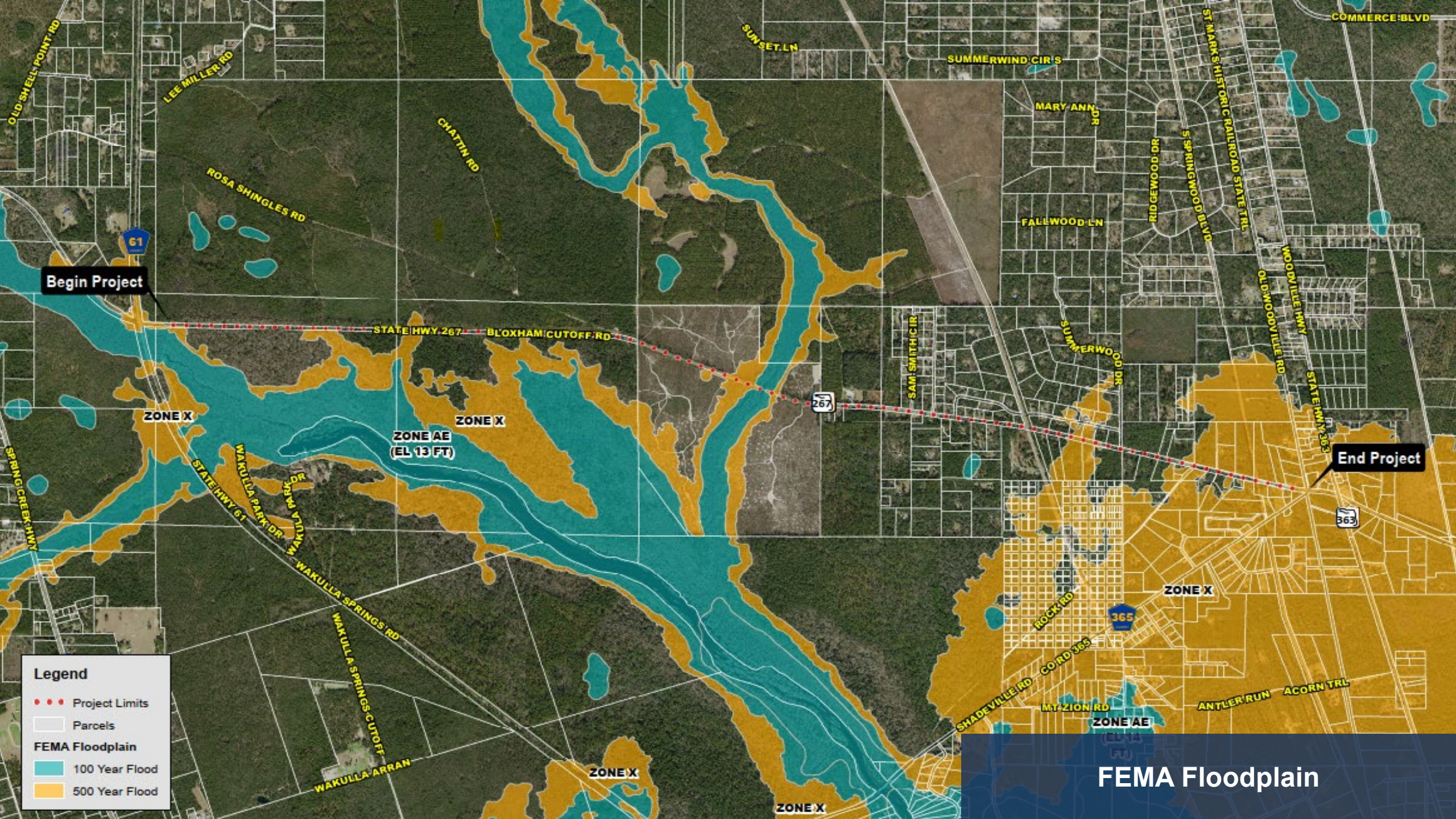
- • • Project Limits
- Parcels
- Florida Conservation Lands (FLMA)**
- Managed Area**
  - Edward Ball Wakulla Springs State Park
  - Tallahassee-St. Marks Historic Railroad State Trail
  - Wakulla State Forest

**Begin Project**

**End Project**

**Public Lands**



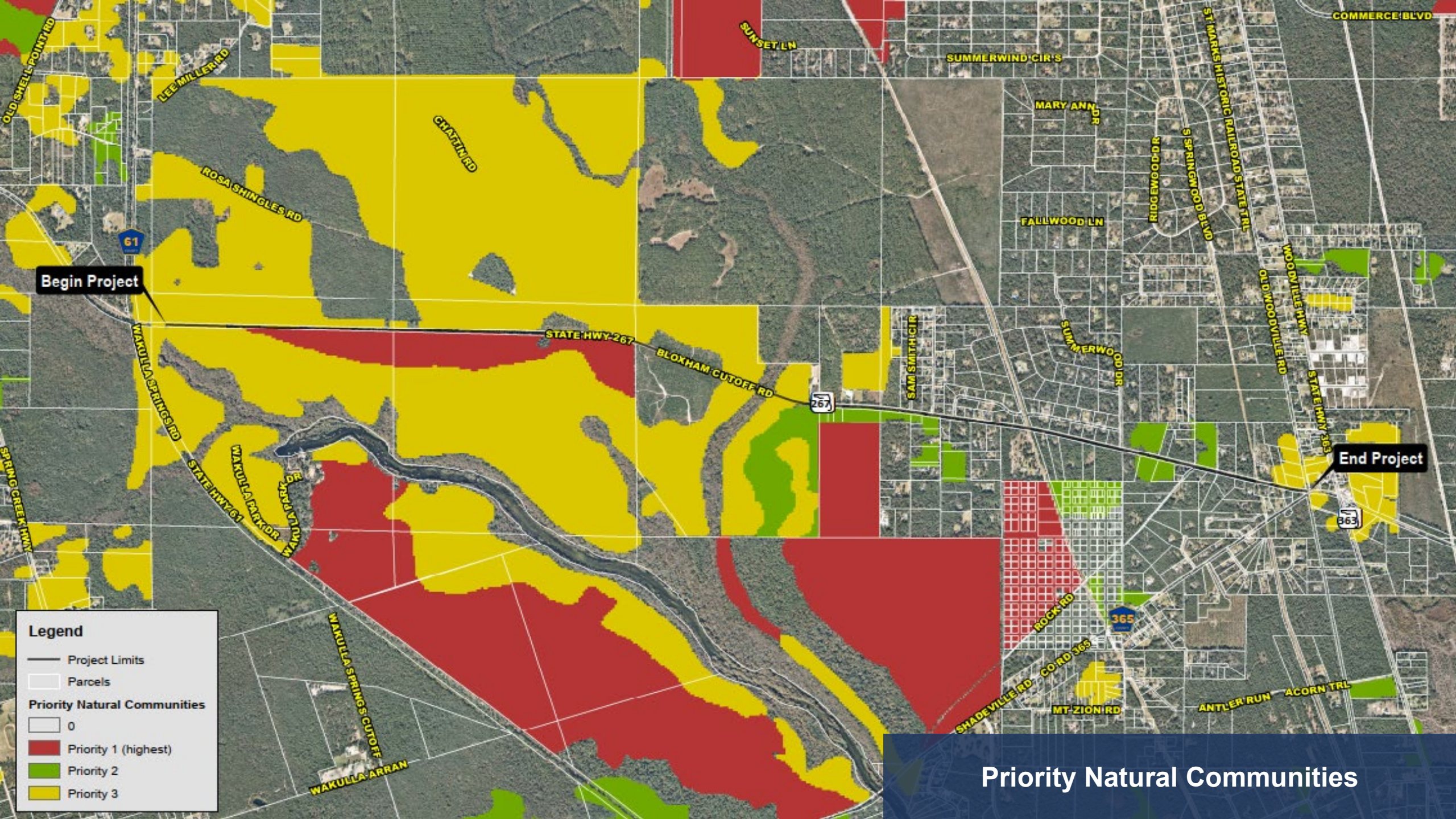


FEMA Floodplain











# ALTERNATIVES

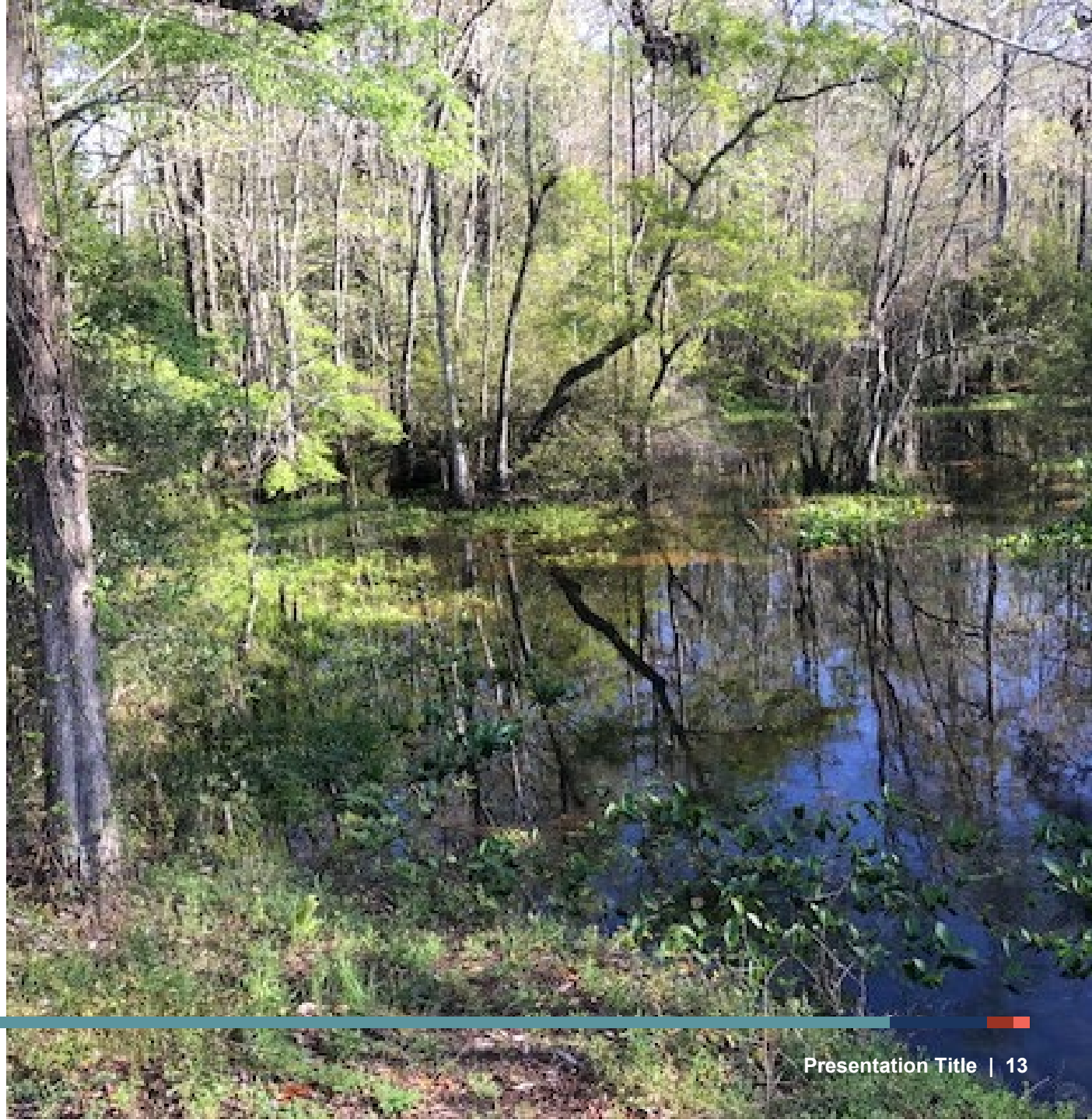
## ■ Alternatives

- Alternative 1 – North Side
- Alternative 2 – South Side
- Alternative 3 – North Side (Off System)
- Alternative 4 – South Side (Off System)

## ■ Typical Section

## ■ Intersection Safety Analysis

- Concept 1 – Plus Intersection
- Concept 2 – Roundabout
- FDOT Design from Resurfacing Project





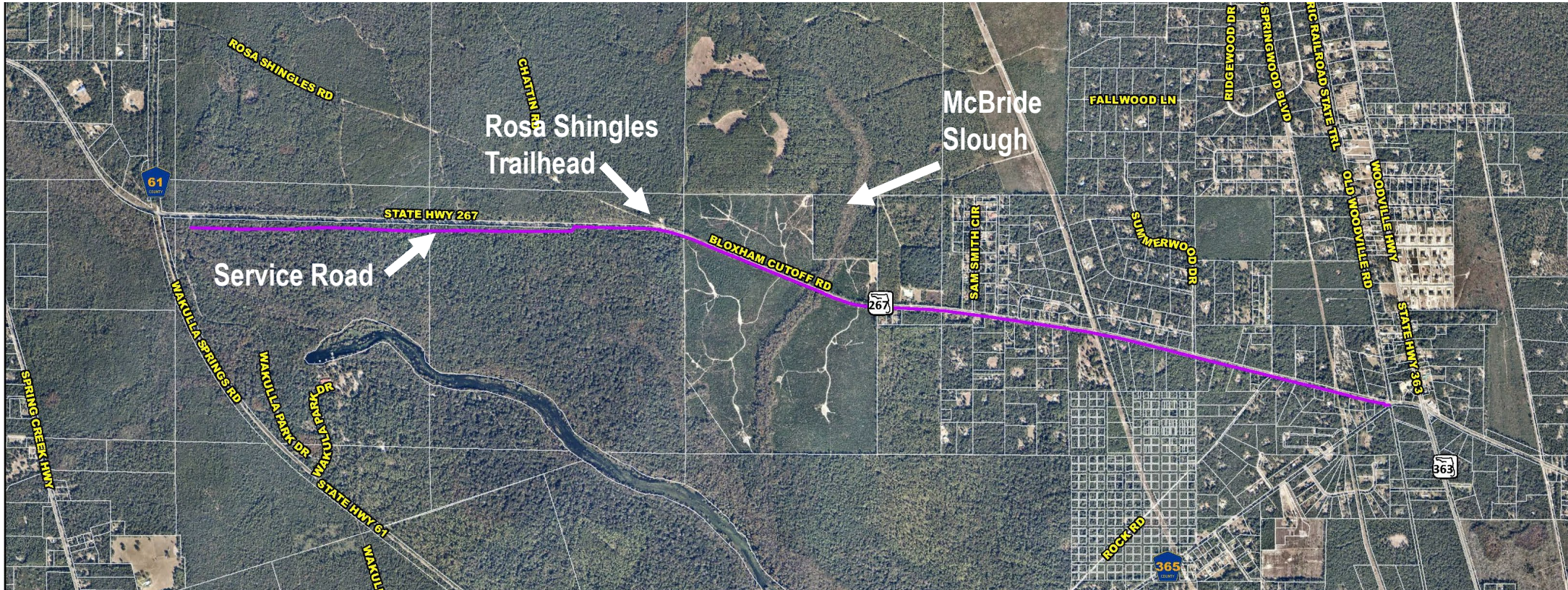
# ALTERNATIVE 1 – NORTH SIDE



- Length: 4.8 miles
- 11 driveway connections/One Business (Anytime Electric)
- Connection to Rosa Shingles Trailhead/Wakulla WMA
- Five Roadway Crossings: SR-267, Page Oliver Rd., Summerwood Dr., Sharonwood Dr., Sam Smith Cir.
- Right-of-Way: FDOT and Wakulla Springs State Park
- Tree impacts (clearing required), Limited Shade



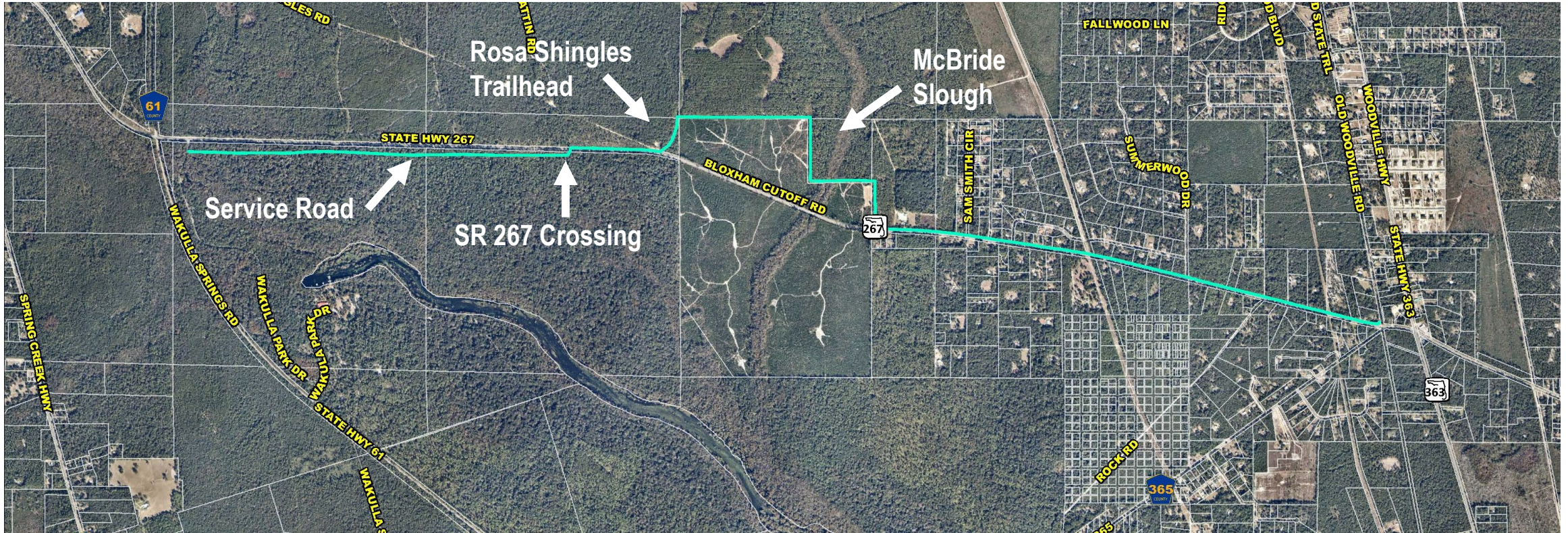
# ALTERNATIVE 2 – SOUTH SIDE



- Length: 4.8 miles
- 23 driveway connections/One Business (Animal Hospital)
- No Connection to Rosa Shingles Trailhead/Wakulla WMA
- Four Roadway Crossings: Shadeville Rd., Rock Rd., Canopy Ln, Old Nails Rd.
- Right-of-Way: FDOT and Wakulla Springs State Park
- Follows overhead utilities – Shade in Afternoon



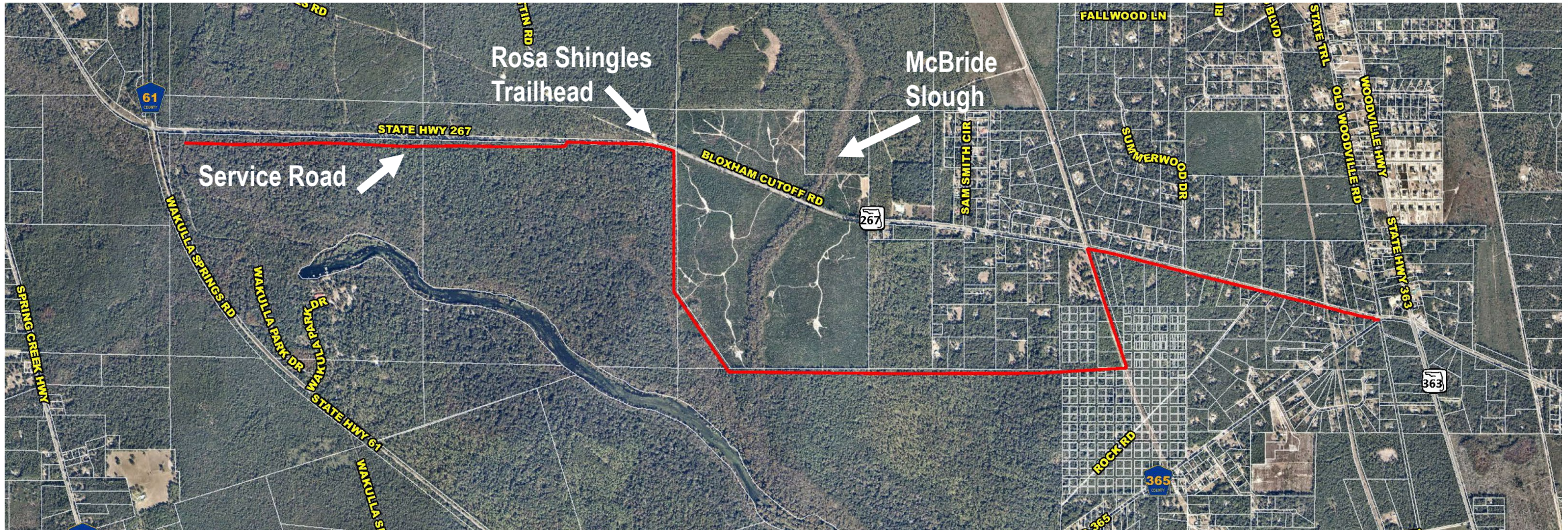
# ALTERNATIVE 3 – NORTH SIDE (OFF SYSTEM)



- Length: 5.2 miles
- 11 driveway connections/One Business (Anytime Electric)
- Connection to Rosa Shingles Trailhead/ Wakulla WMA
- Five Roadway Crossings: SR-267, Page Oliver Rd., Summerwood Dr., Sharonwood Dr., Sam Smith Cir.
- Right-of-Way: FDOT, Wakulla Springs State Park & FDACS
- Not Supported by FDACS, Removed from further consideration



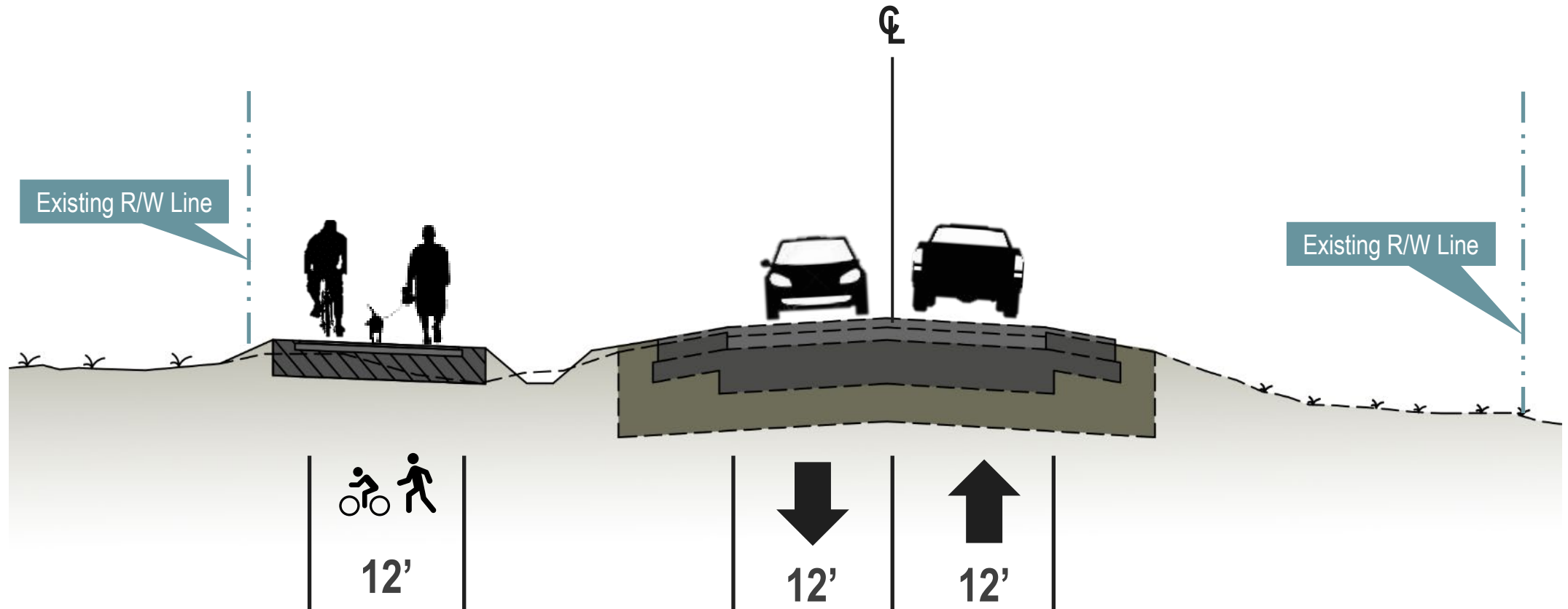
# ALTERNATIVE 4 – SOUTH SIDE (OFF SYSTEM)



- Length: 6.1 miles
- 11 driveway connections/One Business (Animal Hospital)
- No Connection to Rosa Shingles Trailhead/Wakulla WMA
- Two Roadway Crossings: Shadeville Road, Rock Road
- Right-of-Way: FDOT & Wakulla Springs State Park
- Not Supported by Wakulla Springs State Park, Removed from further consideration



# TYPICAL SECTION











NO  
MOTOR  
VEHICLES

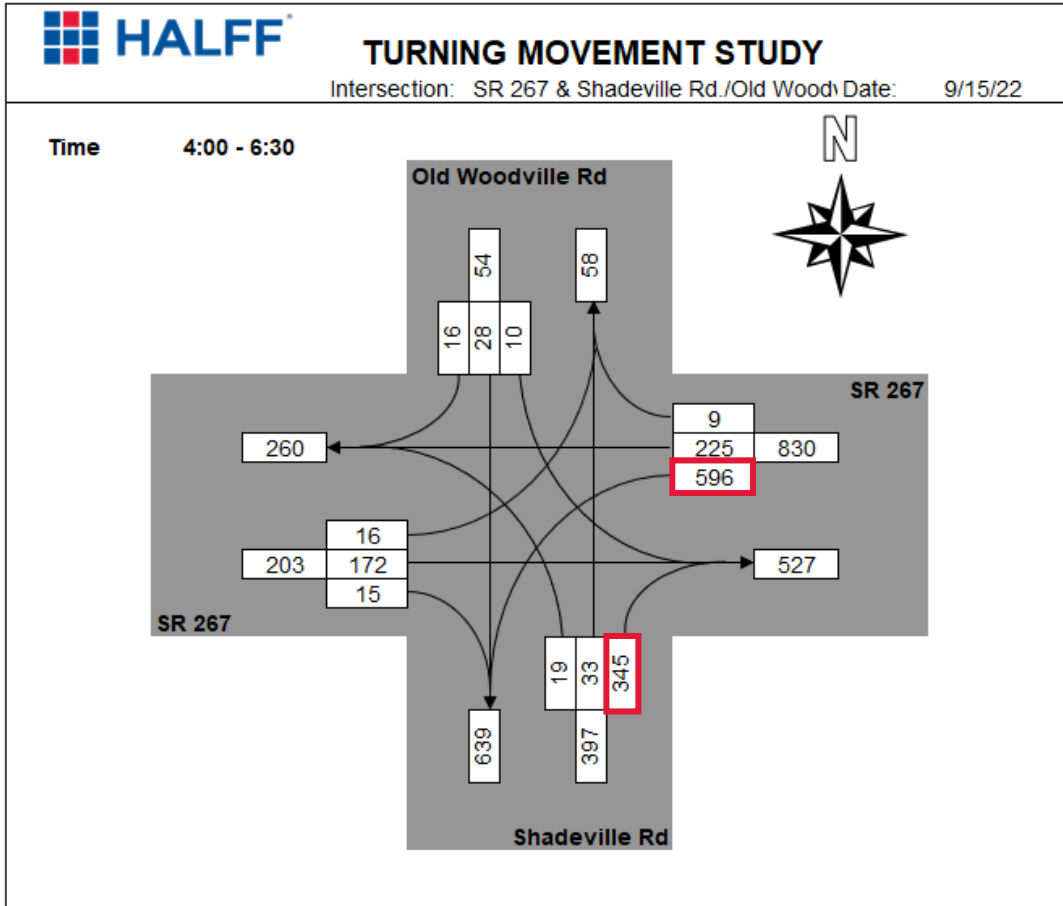
DAYLIGHT  
USE  
ONLY







# INTERSECTION COUNTS

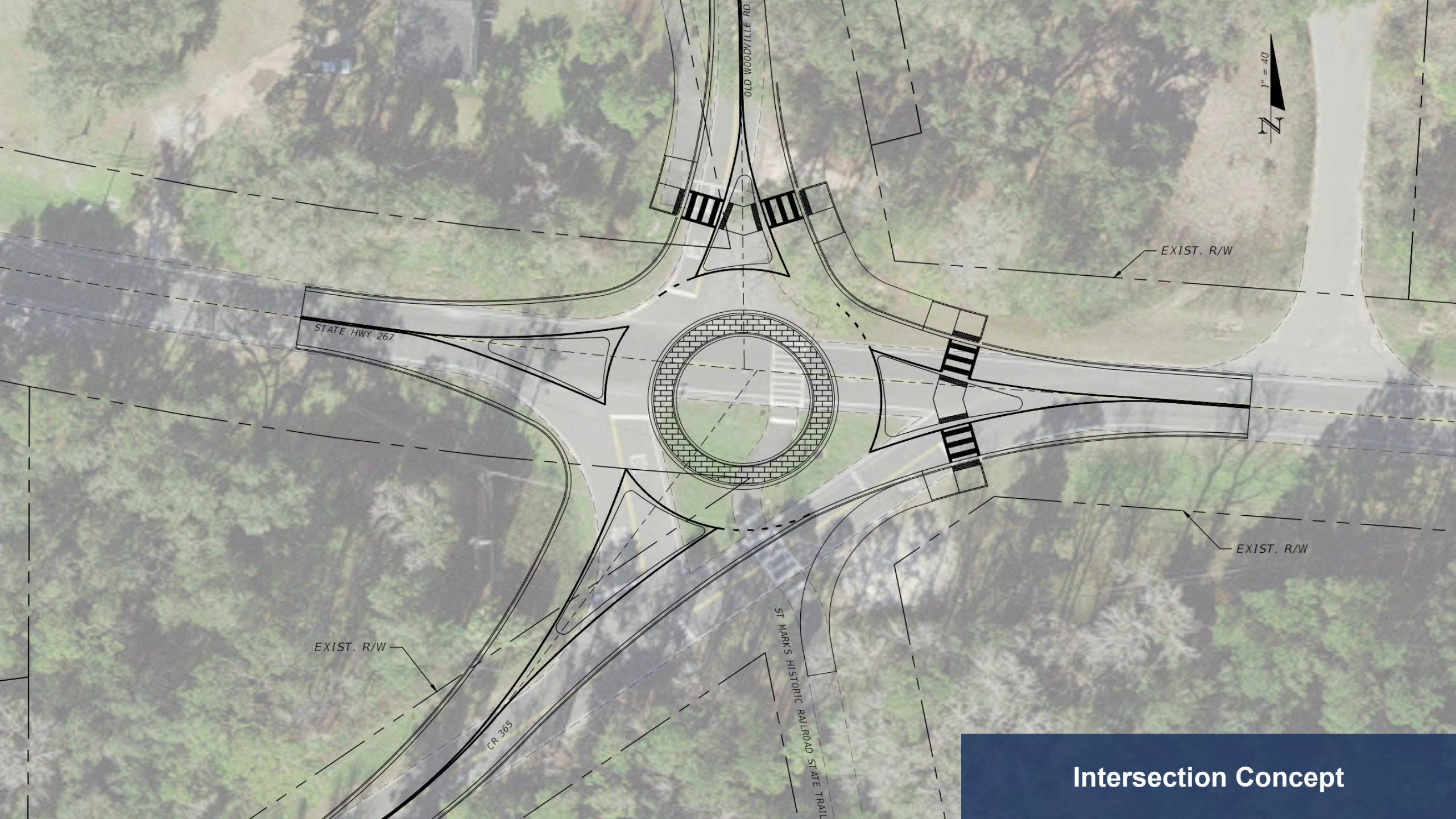






Intersection Concept





Intersection Concept



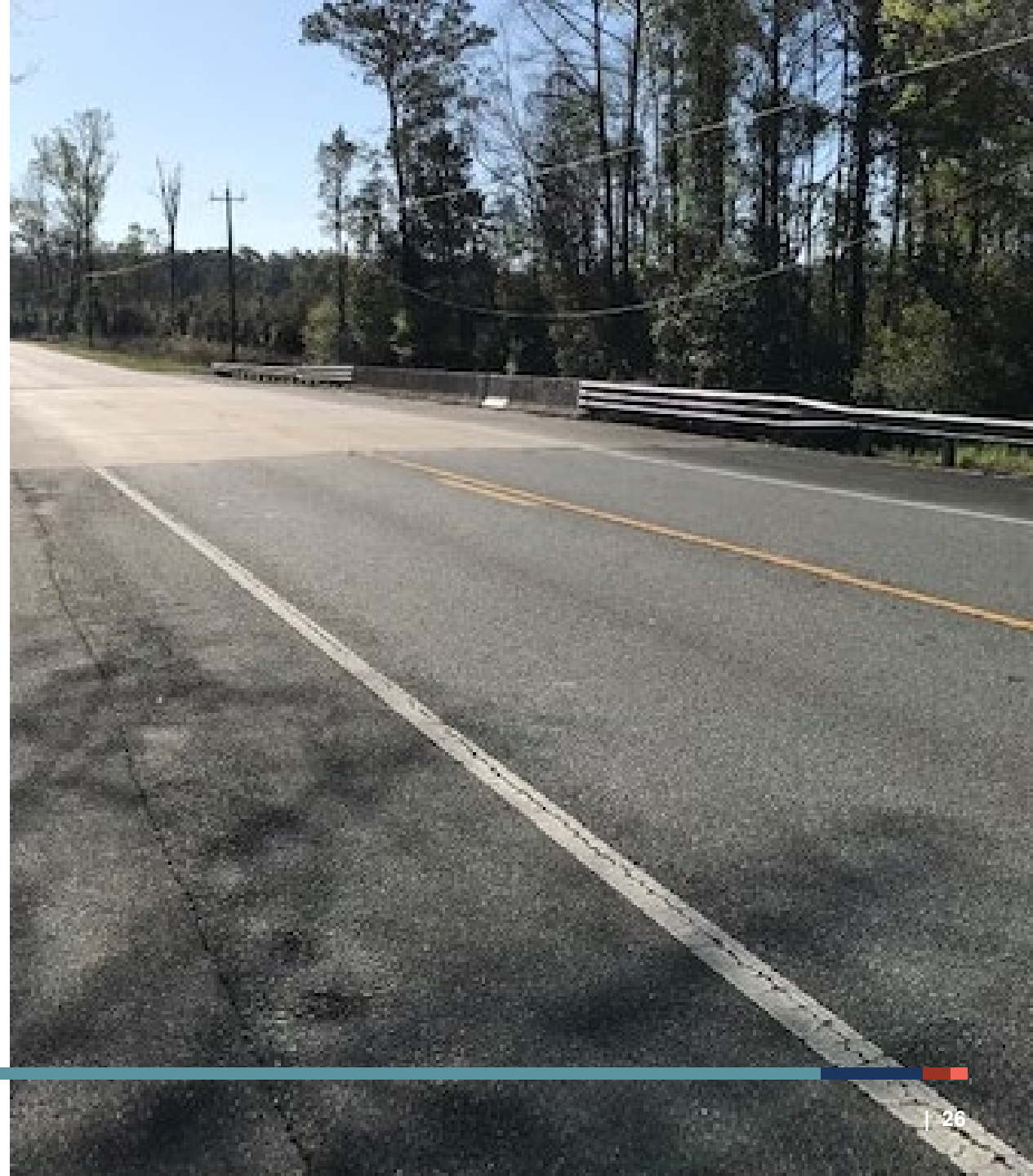




# SR 267 OVER MCBRIDE SLOUGH (STRUCTURE #590023)



- Total length: 75.1 ft.
- Deck width edge to edge: 47.2 ft.
- Year built: 1964
- Year reconstructed: 1989
- Historic significance: bridge is not eligible for NRHP
- ADT: 2,300
- Truck traffic: 15% of total traffic
- Deck condition: good (7 out of 9)
- Superstructure condition: good (7 out of 10)
- Substructure condition: good (7 out of 10)
- Sufficiency Rating: 97.2 (Inspection 5/2018)





# TRAIL CROSSING OPTIONS OVER MCBRIDE SLOUGH

1



CONSTRUCT NEW BRIDGE

2



USE SHOULDER FOR TRAIL CROSSING



# STAKEHOLDERS

- FDACS – Florida Forestry Service
- Wakulla Springs State Park
- Florida Department of Transportation District Three
- Wakulla County
- Friends of Wakulla Springs State Park
- Utility Agency Owners





# SCHEDULE

Project Kickoff: August 2022 | Project Completion: July 2023

TASK	2022					2023						
	AUG	SEP	OCT	NOV	DEC	JAN	FEB	MAR	APR	MAY	JUN	JUL
<b>1. DATA COLLECTION AND MAPPING</b>												
Deliverable: Summary					✓							
<b>2. SITE VISITS</b>												
Deliverable: Photos & Map Book					✓							
<b>3. ALTERNATIVE TRAIL ANALYSIS</b>												
Deliverable: Concept Plans and Estimates										✓		
<b>4. EXISTING CONDITIONS REPORT</b>												
Deliverable: Draft & Final Report									✓			
<b>5. PROJECT TEAM AND STAKEHOLDER MEETINGS</b>												
Deliverable: Meeting Materials & Summary Reports	👤	👤	👤	👤	👤	👤	👤	👤	👤	👤	👤	✓
<b>6. INTERSECTION CONCEPTUAL REVIEW</b>												
Deliverable: Intersection Analysis Report					✓							
<b>7. FEASIBILITY STUDY AND DOCUMENTATION</b>												
Deliverable: Feasibility Study												✓



Virtual or Staff Meetings



Committee Meeting



Public Meeting





# **DISCUSSION QUESTIONS**