

April 4, 2023



COMMITTEE AGENDA ITEM 5 B
**SR 267/BLOXHAM CUTOFF TRAIL
FEASIBILITY STUDY**

TYPE OF ITEM: Presentation/Discussion/Action

STATEMENT OF ISSUE

This item provides an update related to the development of a feasibility study evaluating a connection between Wakulla Springs State Park and the St. Marks Trail.

RECOMMENDED ACTION

Option 1: For Committee Information.

BACKGROUND

Initiated in the summer of 2022, the SR 267/Bloxham Cutoff Trail Feasibility Study is evaluating a multi-use trail connection from the Edward Ball Wakulla Springs State Park Entrance to the St. Marks Trail (a distance of 4.78 miles). This trail connection is identified in the CRTPA's Capital City-to-the-Sea Trails Plan and Wakulla County's Bicycle, Pedestrian and Blueways Master Plan.

Development of a multi-use trail connection between Wakulla Springs State Park and the St. Marks Trail will enhance regional trail connectivity between the popular state park and the St. Marks Trail as well as the US 98 Coastal Trail. Efforts associated with the study include the development of an existing conditions assessment that includes the identification of environmental and manmade constraints along the corridor. The existing conditions assessment will include an evaluation of possible trail alternatives within the study's limits.

To date, coordination and public involvement efforts have been limited to stakeholders including the Florida Department of Environmental Protection, Florida Department of Agriculture and Consumer Services (Florida Forest Service), and the Friends of Edward Ball Wakulla Springs State Park.

ATTACHMENT

Attachment 1: Draft Presentation



Capital Region Transportation Planning Agenda

SR 267 (Bloxxham Cutoff Road) Trail Feasibility Study

CRTPA Advisory Committees

April 4, 2023

AGENDA



Background

- Location
- Purpose
- Planning Consistency



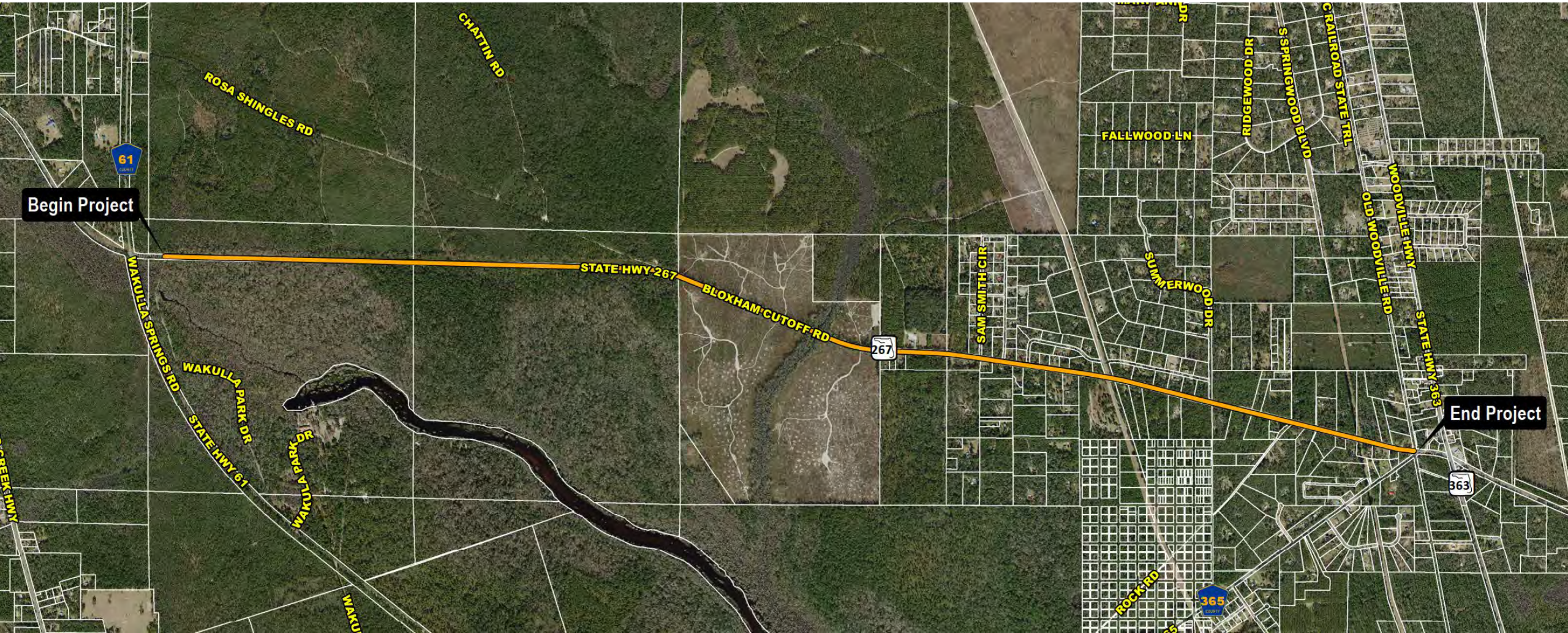
Efforts to Date

- Efforts to Date
- Mapping Data
- Alternatives
- Typical Section
- Intersection Analysis
- Bridge over McBride Slough
- Stakeholders
- Schedule



Discussion

SR 267 (BLOXHAM CUTOFF ROAD) TRAIL FEASIBILITY STUDY



SR 267 (BLOXHAM CUTOFF ROAD) TRAIL FEASIBILITY STUDY



LOCATION

Connects Edward Ball Wakulla Spring State Park entrance to St. Marks Trail (4.74 miles)



PURPOSE

Identify & evaluate reasonable alternatives to carry forward to a preferred trail route



PLANNING CONSISTENCY

- Trail connection contained within:
- Capital City to the Sea Trail Plan
 - Wakulla Co. Bicycle/Pedestrian & Blueway Master Plan
 - Edward Ball Wakulla Springs State Park Unit Management Plan (trail portion along service road)

Park Entrance
New Traffic Pattern
Multi Use Trail Connection
Bicycle and Pedestrian Improvements

Ranger Station
Replace Ranger Station

Rosa Shingles Trailhead
Potential Connection

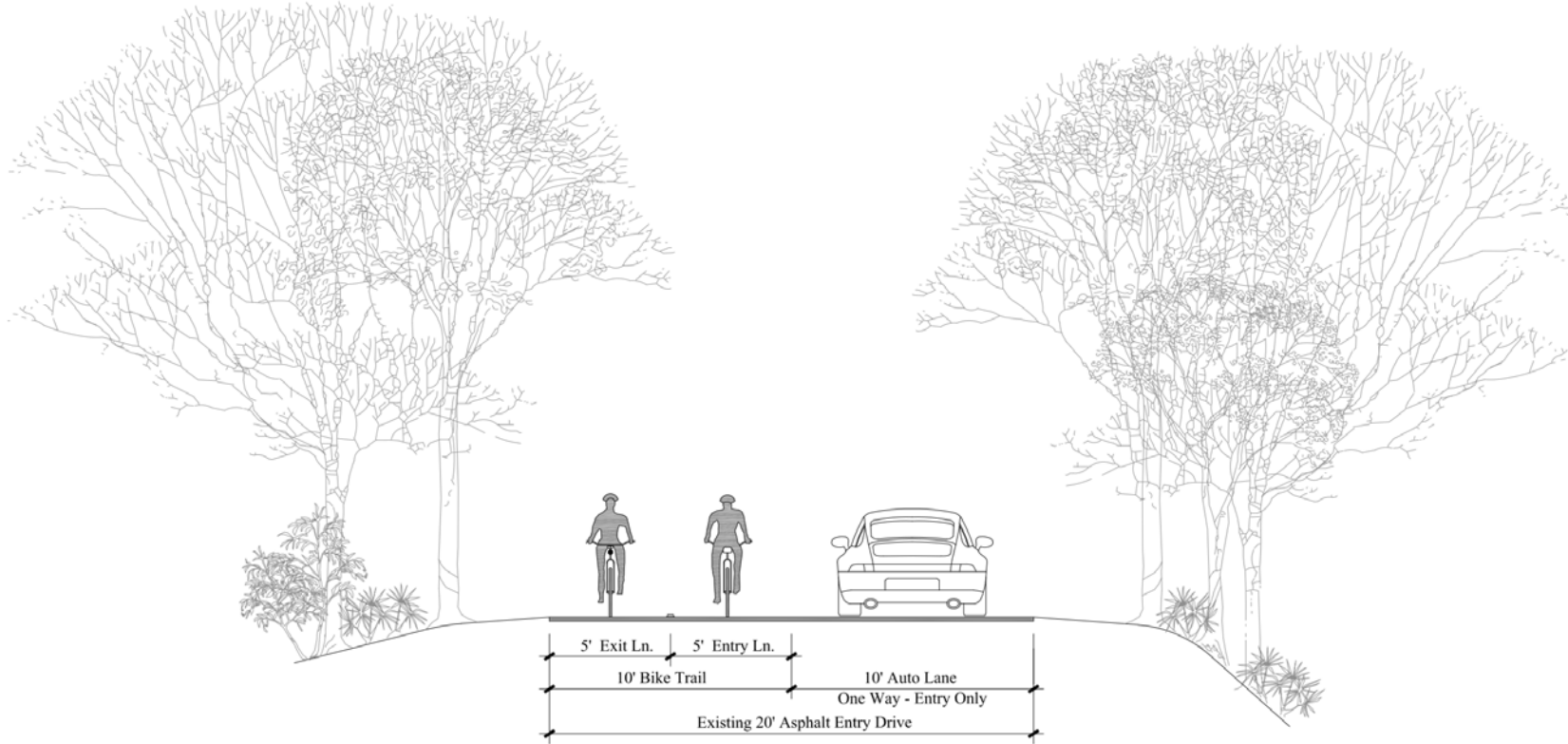
Employee Entrance
Fence and Gate Improvements
Proposed New Exit Location for Visitors
Add Pedestrian Gate

Cherokee Sink
Add Restroom

**Wakulla Springs State Park
Unit Management Plan**



SR 267 (BLOXHAM CUTOFF ROAD) TRAIL FEASIBILITY STUDY



Wakulla Park Drive - Conceptual Roadway Section
1/4"=1'-0"

MAPPING DATA

- Speed limit
- Public lands
- Environmental
 - FEMA flood zones
 - Cultural resources
 - Priority natural resources

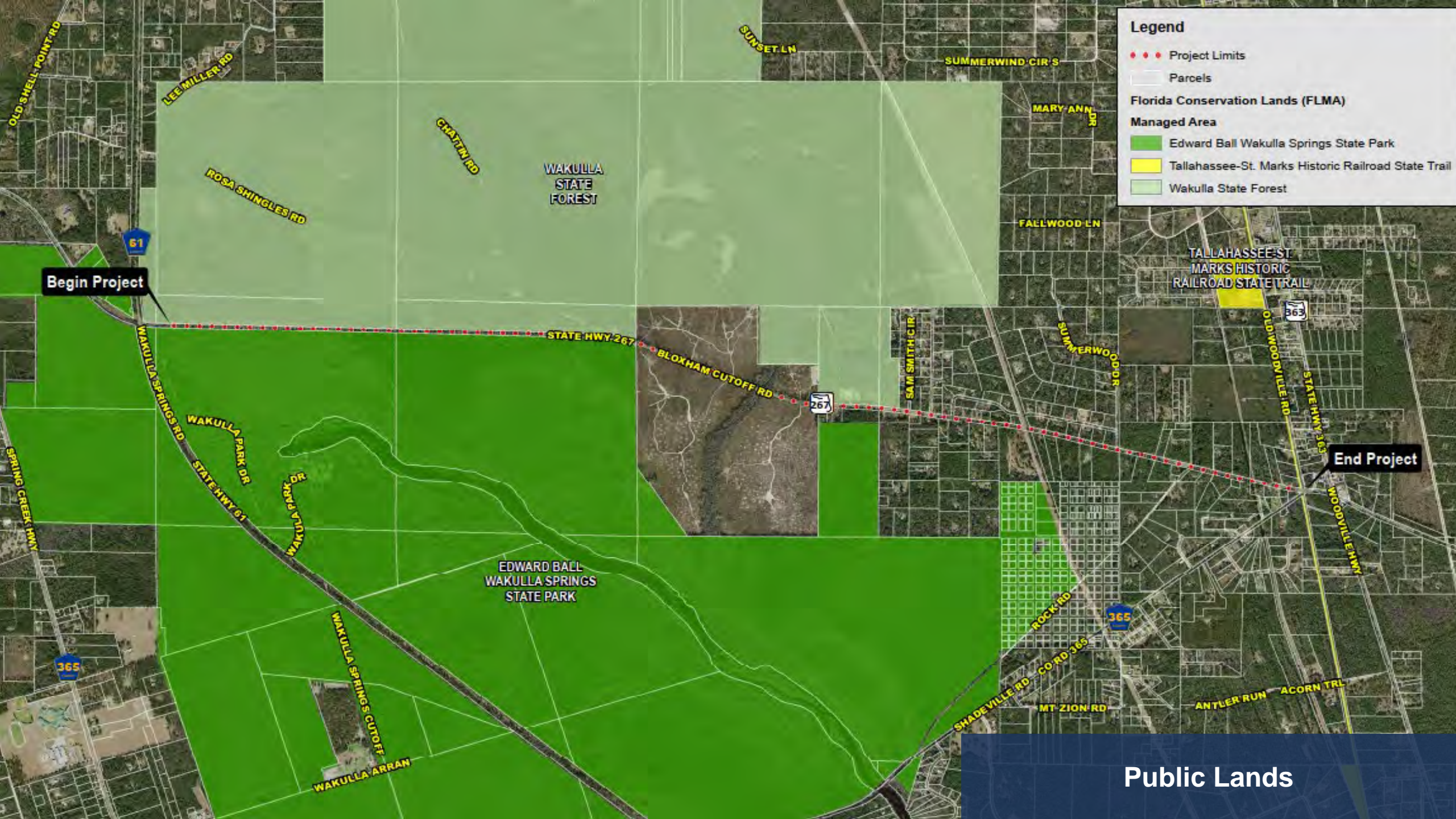




Begin Project

End Project

Maximum Speeds



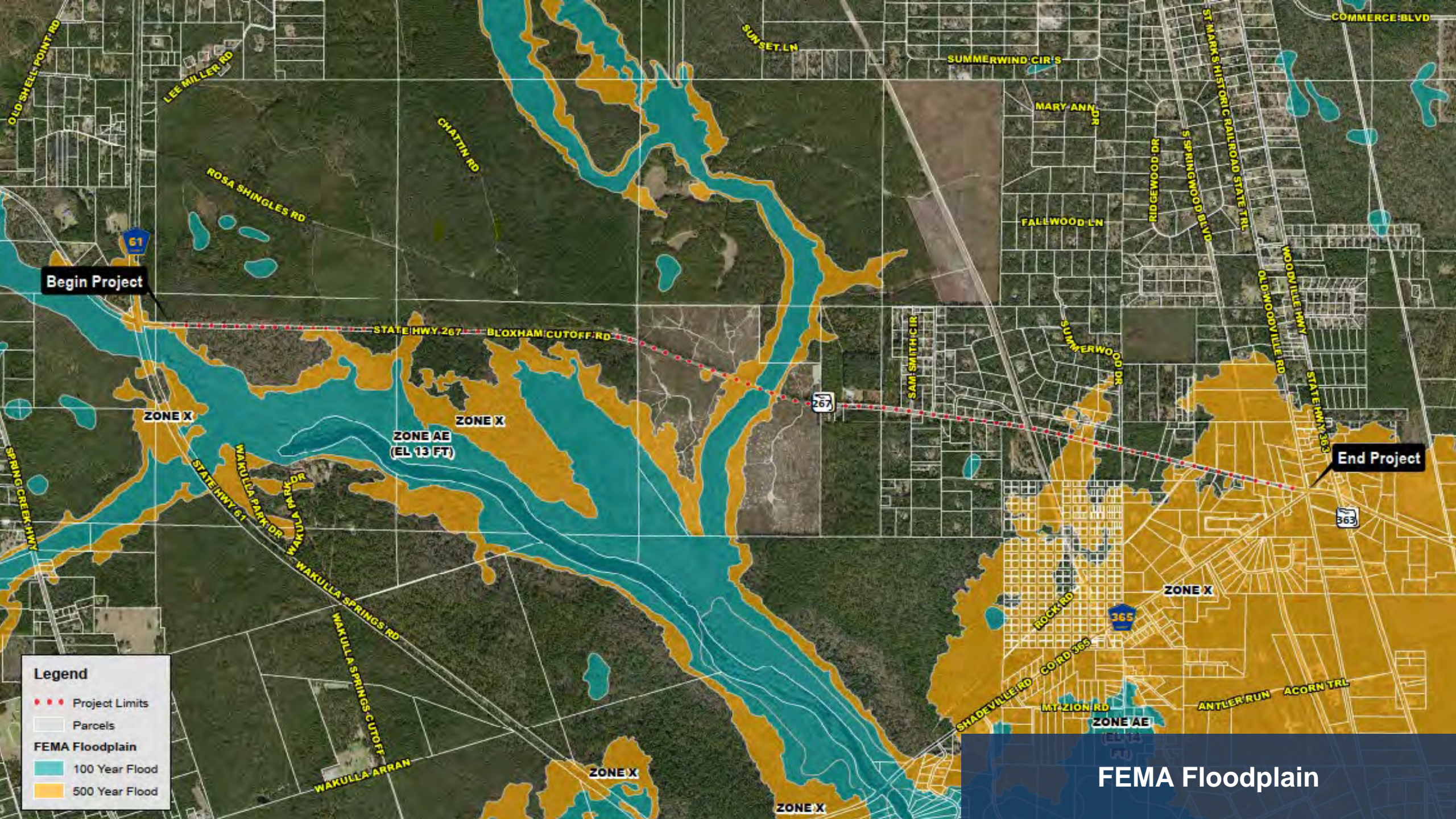
Legend

- Project Limits
- ▭ Parcels
- Florida Conservation Lands (FLMA)**
- Managed Area**
- ▭ Edward Ball Wakulla Springs State Park
- ▭ Tallahassee-St. Marks Historic Railroad State Trail
- ▭ Wakulla State Forest

Begin Project

End Project

Public Lands



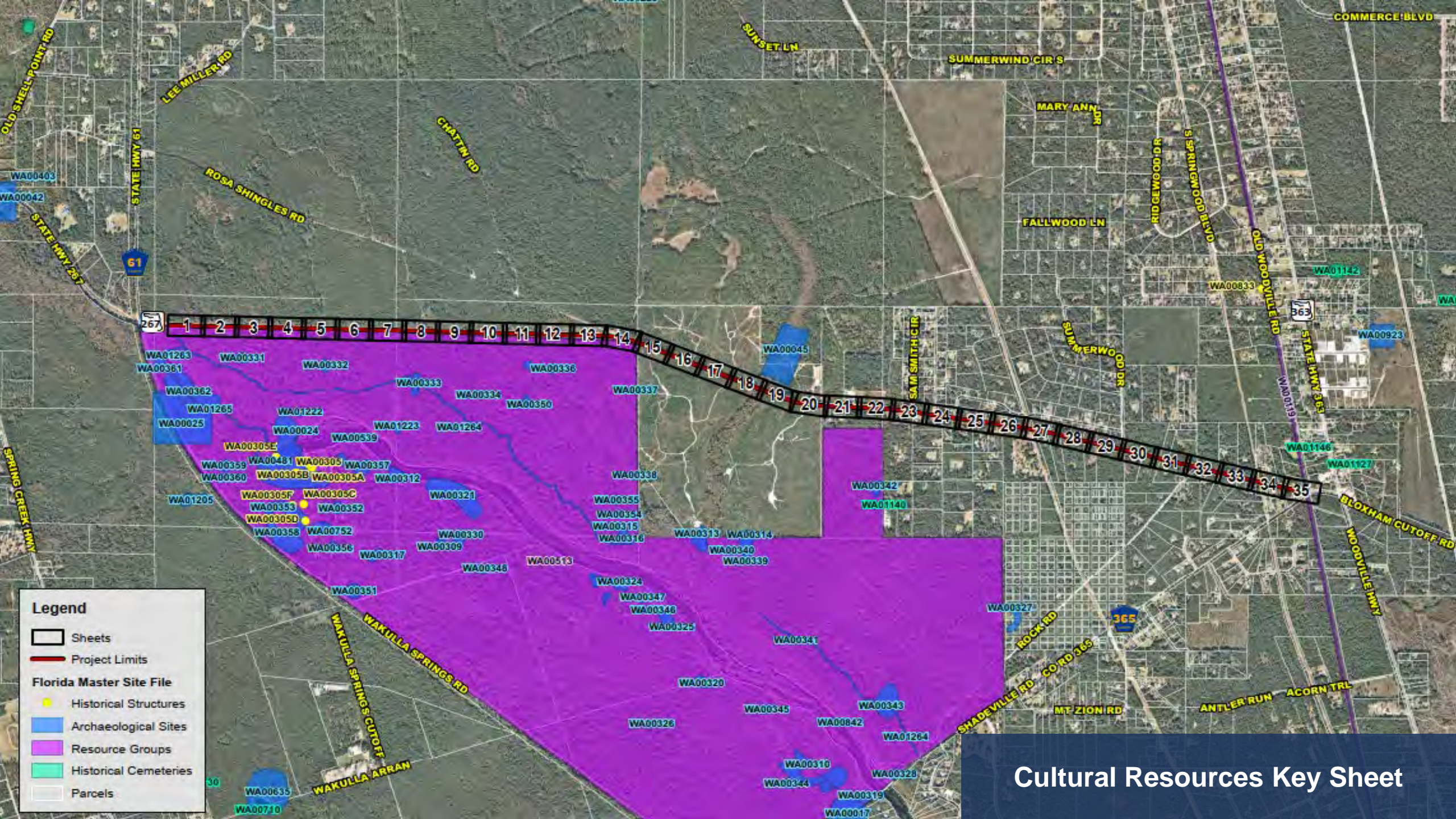
Begin Project

End Project

Legend

- Project Limits
- Parcels
- FEMA Floodplain**
 - 100 Year Flood
 - 500 Year Flood

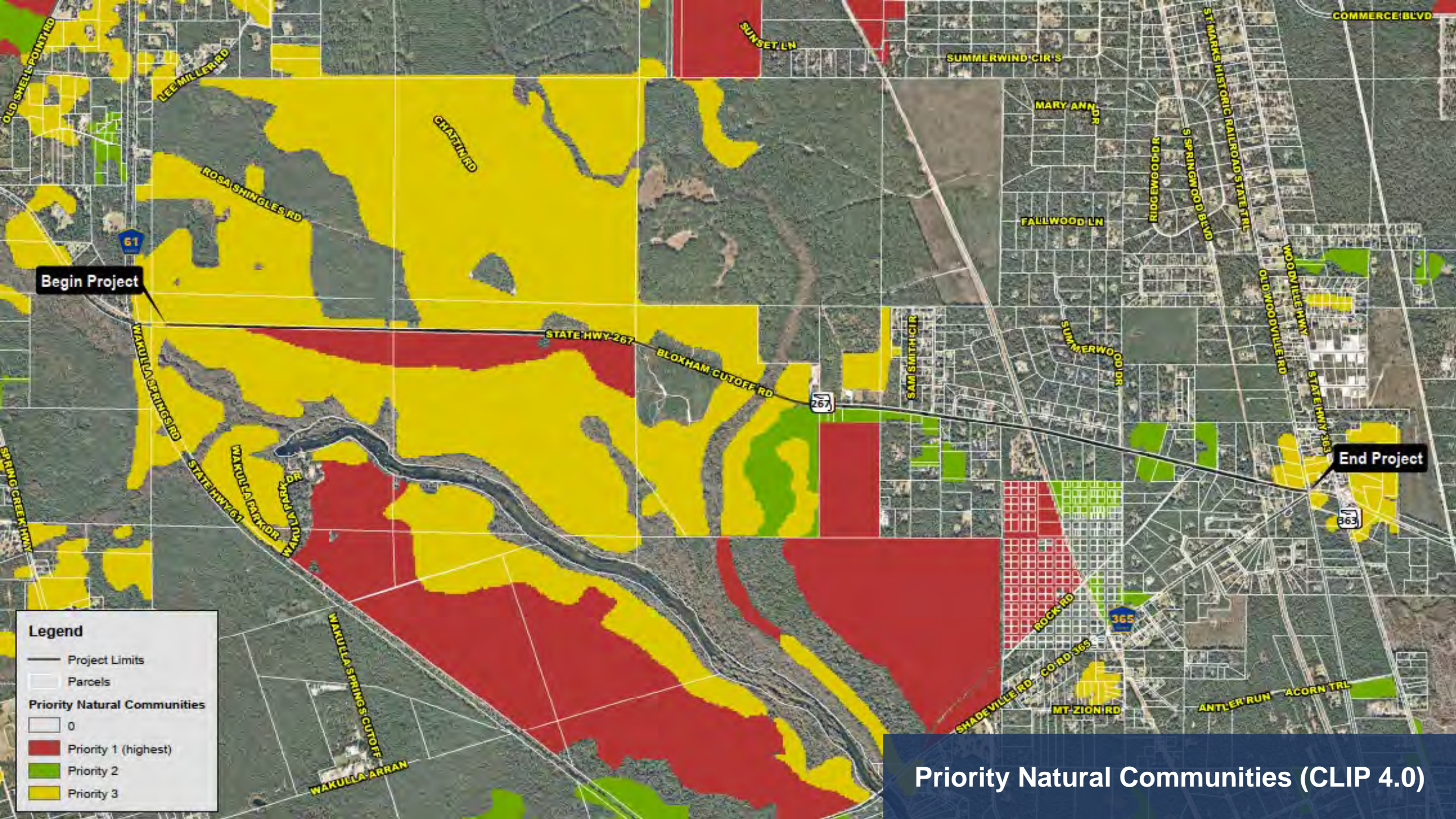
FEMA Floodplain



Legend

- Sheets
- Project Limits
- Florida Master Site File**
 - Historical Structures
 - Archaeological Sites
 - Resource Groups
 - Historical Cemeteries
 - Parcels

Cultural Resources Key Sheet



Begin Project

End Project

Legend

- Project Limits
- ▭ Parcels

Priority Natural Communities

- ▭ 0
- ▭ Priority 1 (highest)
- ▭ Priority 2
- ▭ Priority 3

Priority Natural Communities (CLIP 4.0)

ALTERNATIVES

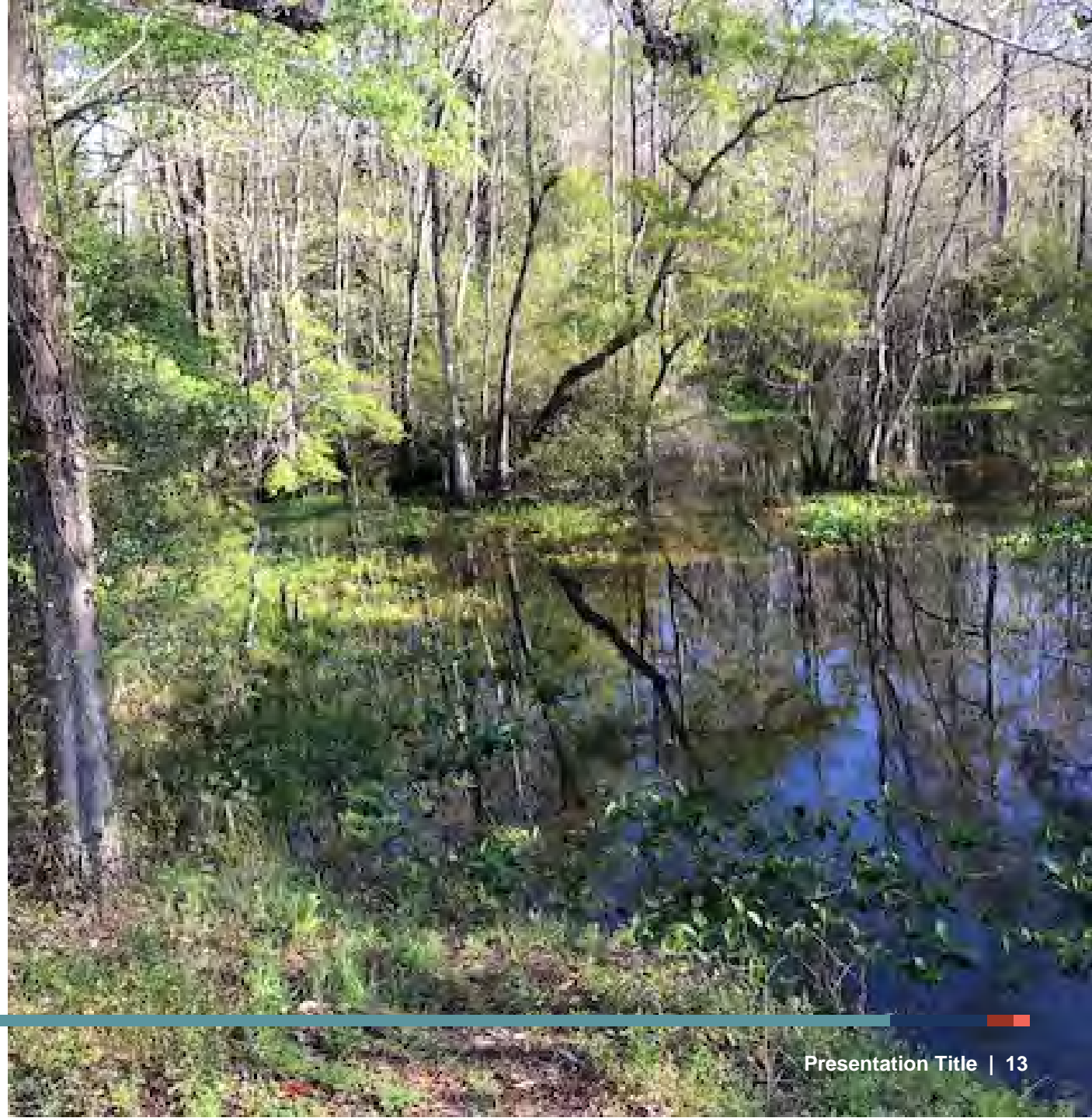
■ Alternatives

- Alternative 1 – North Side
- Alternative 2 – South Side
- Alternative 3 – North Side (Off System)
- Alternative 4 – South Side (Off System)

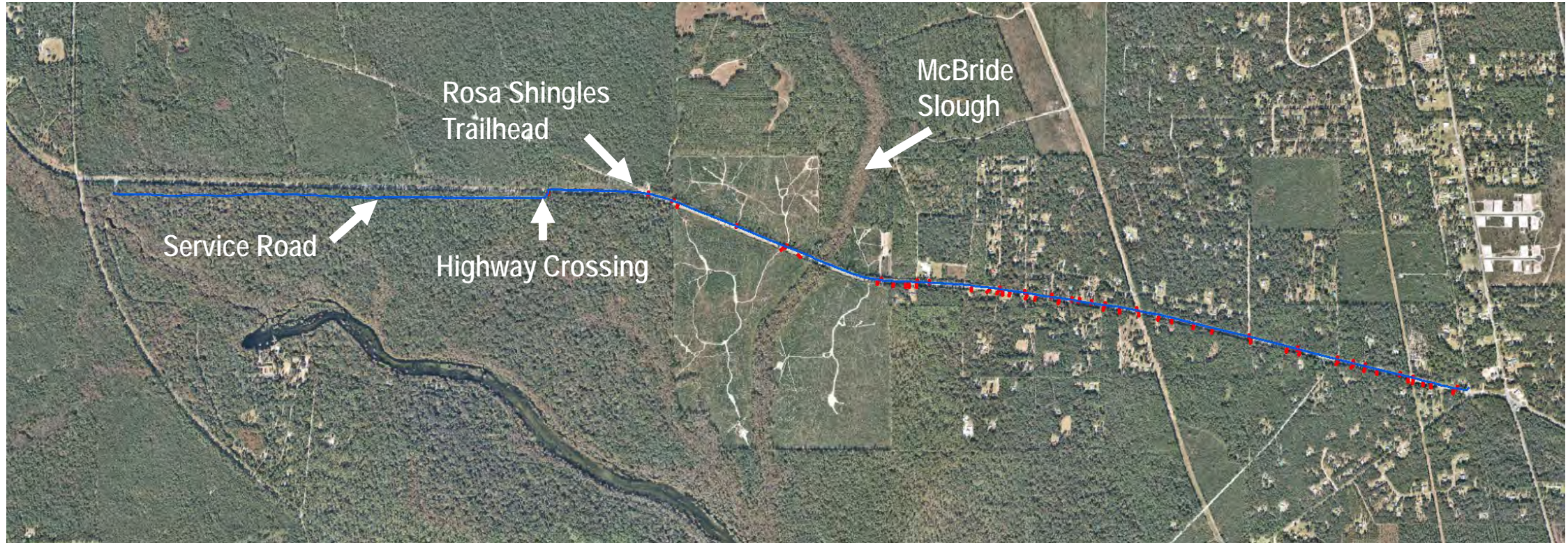
■ Typical Section

■ Intersection Safety Analysis

- Concept 1 – Plus Intersection
- Concept 2 – Roundabout

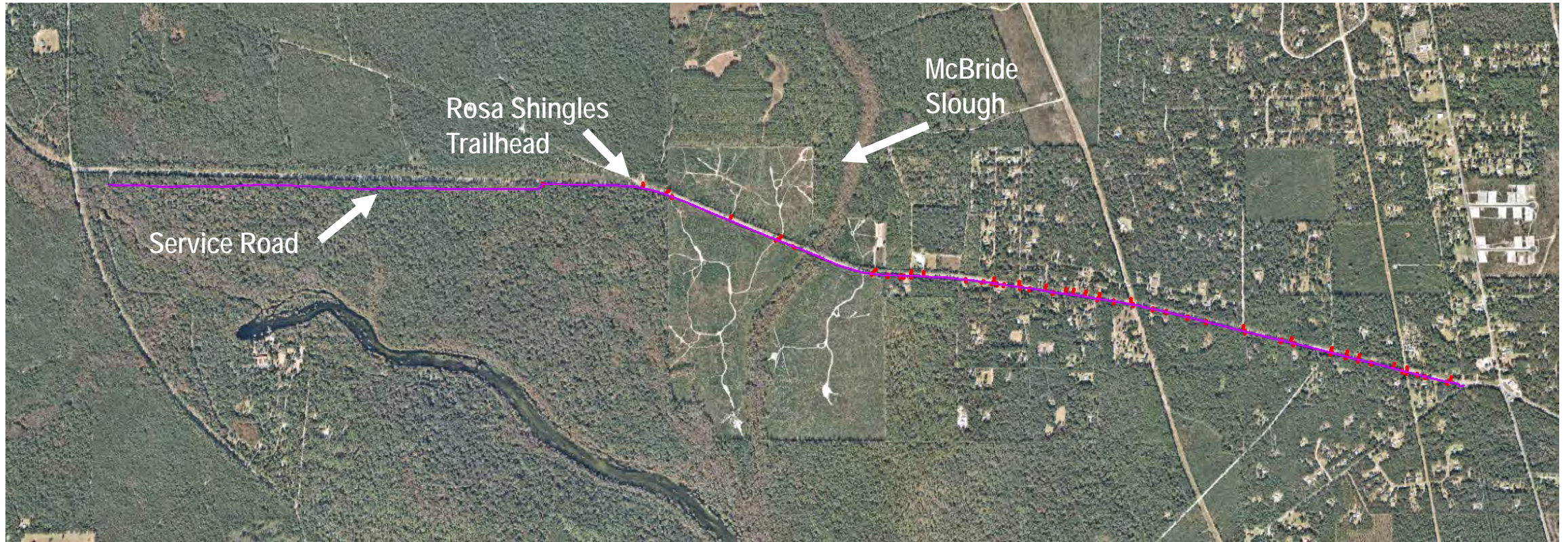


ALTERNATIVE 1 – NORTH SIDE



- Length: 4.8 miles
- Direct connection to Rosa Shingles Trailhead
- 23 driveway crossings/1 highway crossing (SR 267)
- Right-of-Way: FDOT and Wakulla Springs State Park
- Tree impacts (clearing required)
- Limited shade

ALTERNATIVE 2 – SOUTH SIDE



- Length: 4.8 miles
- No direct connection to Rosa Shingles Trailhead
- 36 driveway crossings/0 highway crossings
- Right-of-Way: FDOT and Wakulla Springs State Park
- Follows overhead utilities – minimal tree impacts
- Shade in afternoon

ALTERNATIVE 3 – NORTH SIDE (OFF SYSTEM)



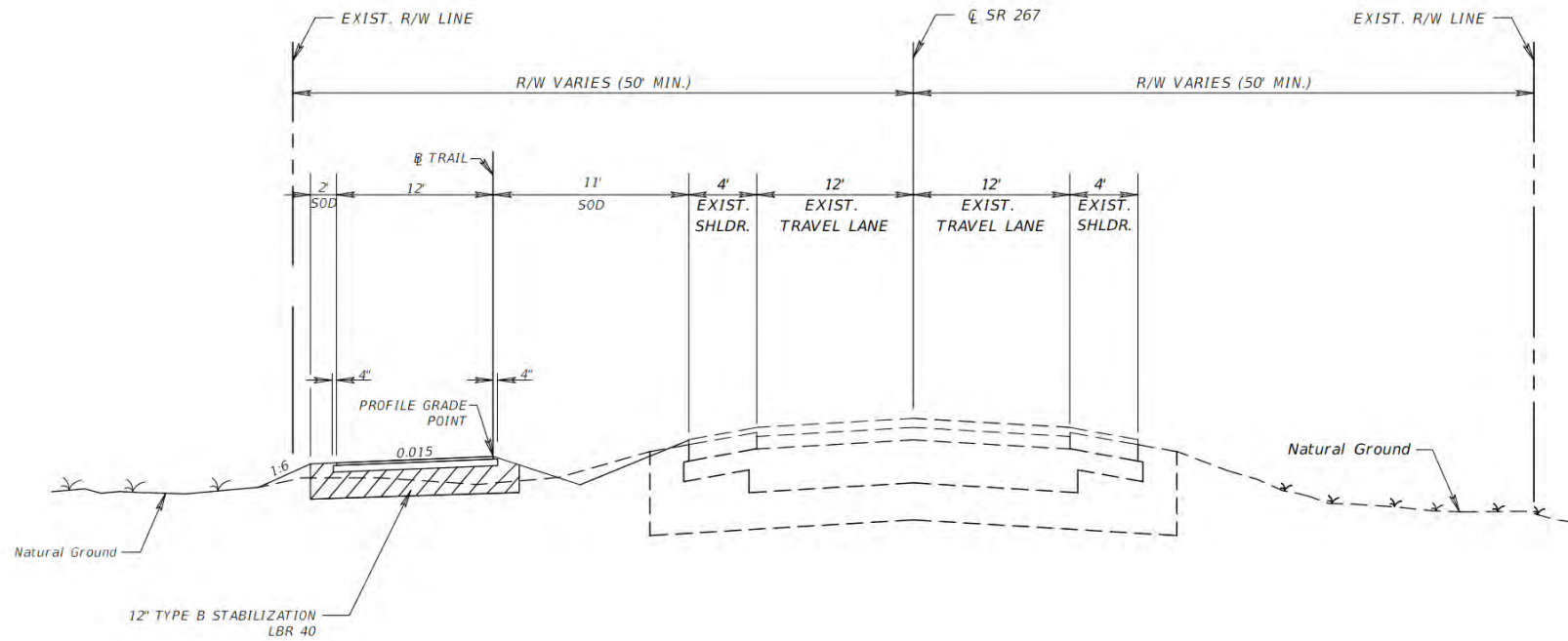
- Length: 5.2 miles
- No direct connection to Rosa Shingles Trailhead
- 19 driveway crossings/1 highway crossing (SR 267)
- Right-of-Way: FDOT, Wakulla Springs State Park & FDACS
- Not Supported by FDACS
- Removed from further consideration

ALTERNATIVE 4 – SOUTH SIDE (OFF SYSTEM)



- Length: 6.1 miles
- No direct connection to Rosa Shingles Trailhead
- 18 driveway crossings/0 highway crossings
- Right-of-Way: FDOT & Wakulla Springs State Park
- Not Supported by Wakulla Springs State Park
- Removed from further consideration

TYPICAL SECTION



TYPICAL SECTION
BLOXHAM MULTI-USE TRAIL
SR 267



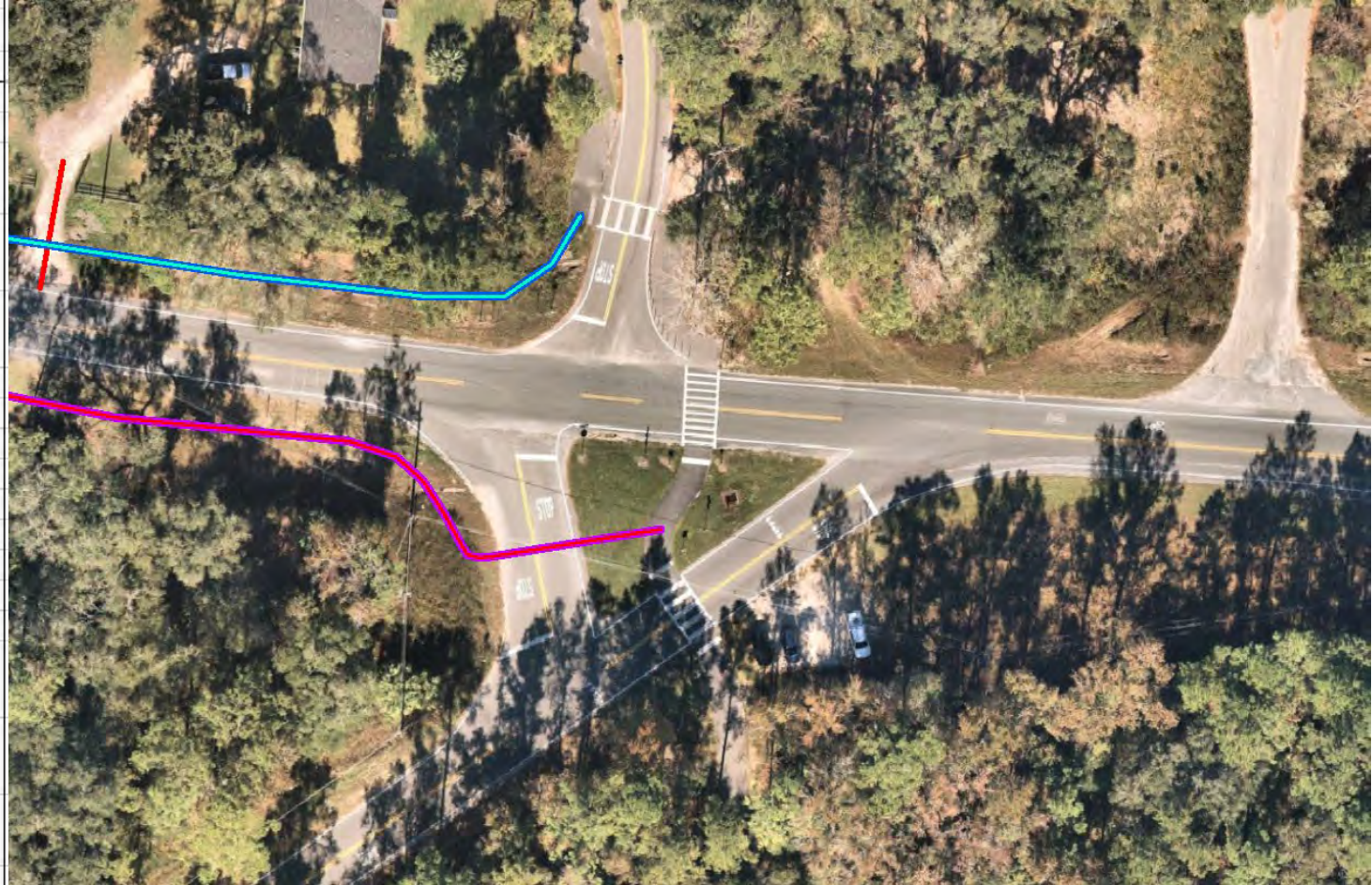
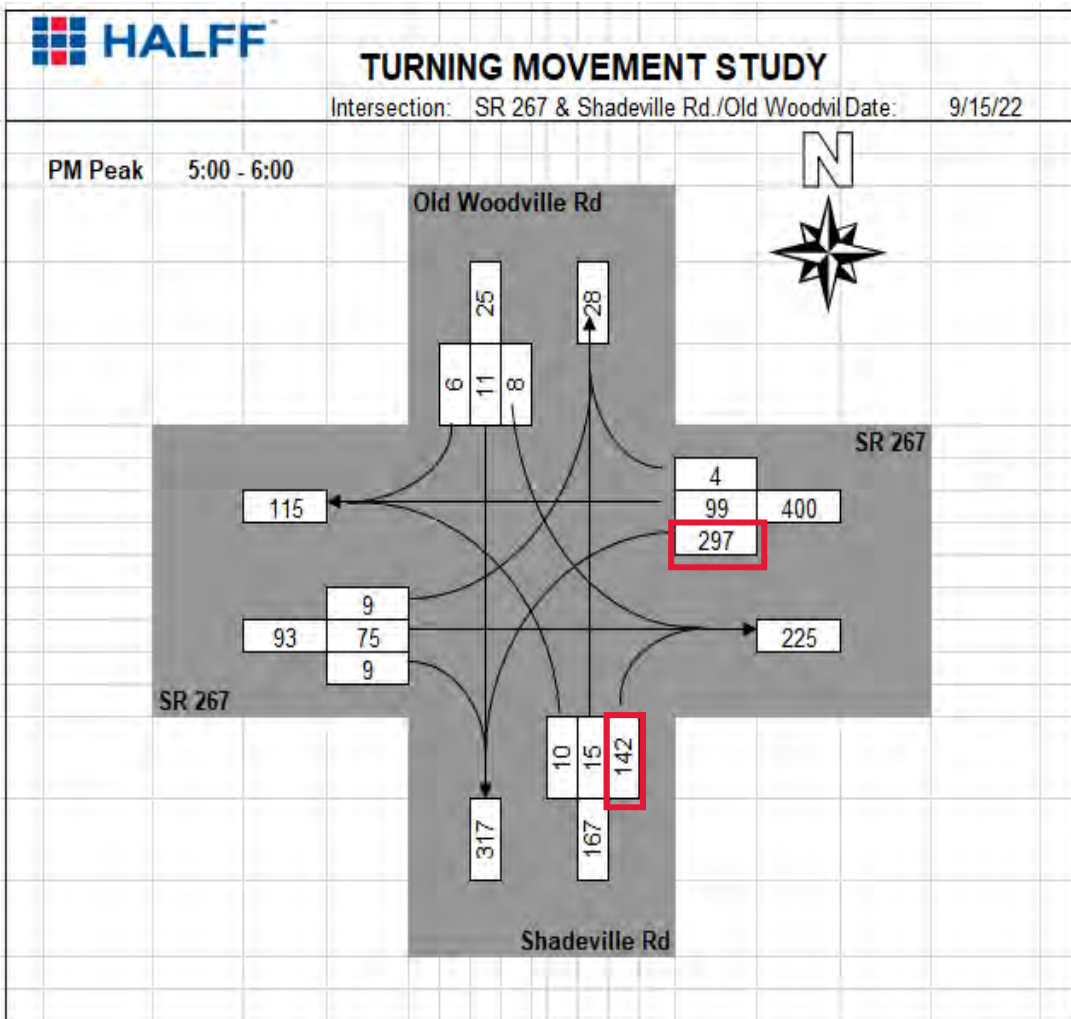


NO
MOTOR
VEHICLES

DAYLIGHT
USE
ONLY



INTERSECTION COUNTS





EXIST. R/W

STATE HWY 267

CR 363

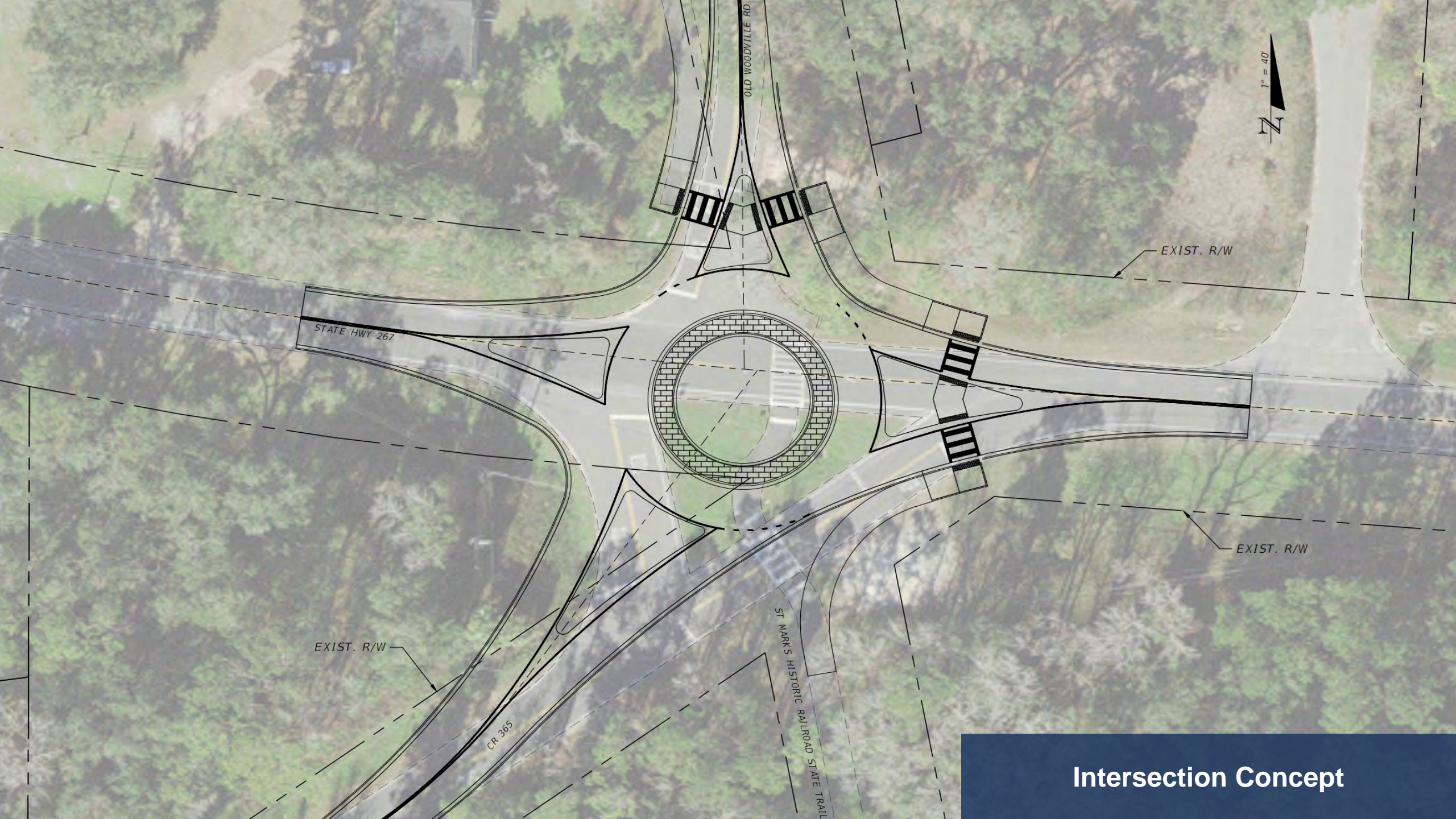
OLD WOODVILLE RD

EXIST. R/W

EXIST. R/W

ST MARKS HISTORIC RAILROAD STATE TRAA

Intersection Concept



EXIST. R/W

EXIST. R/W

EXIST. R/W

STATE HWY 267

OLD WOODVILLE RD

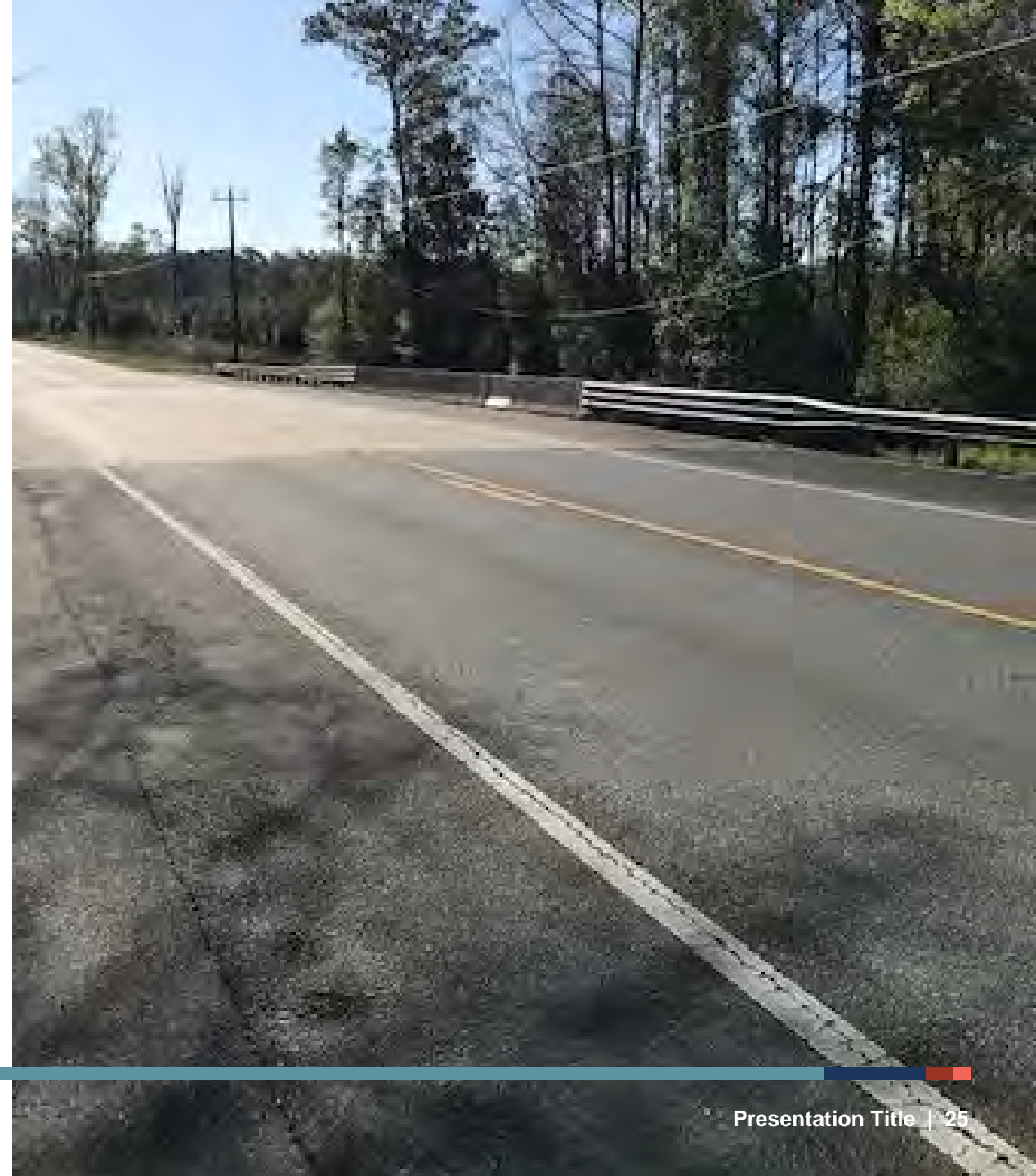
CR 365

ST MARKS HISTORIC RAILROAD STATE TRAIL

Intersection Concept

SR 267 OVER MCBRIDE SLOUGH (STRUCTURE #590023)

- Total length: 75.1 ft.
- Deck width edge to edge: 47.2 ft.
- Year built: 1964
- Year reconstructed: 1989
- Historic significance: bridge is not eligible for NRHP
- ADT: 2,300
- Truck traffic: 15% of total traffic
- Deck condition: good (7 out of 9)
- Superstructure condition: good (7 out of 10)
- Substructure condition: good (7 out of 10)
- Sufficiency Rating: 97.2 (Inspection 5/2018)



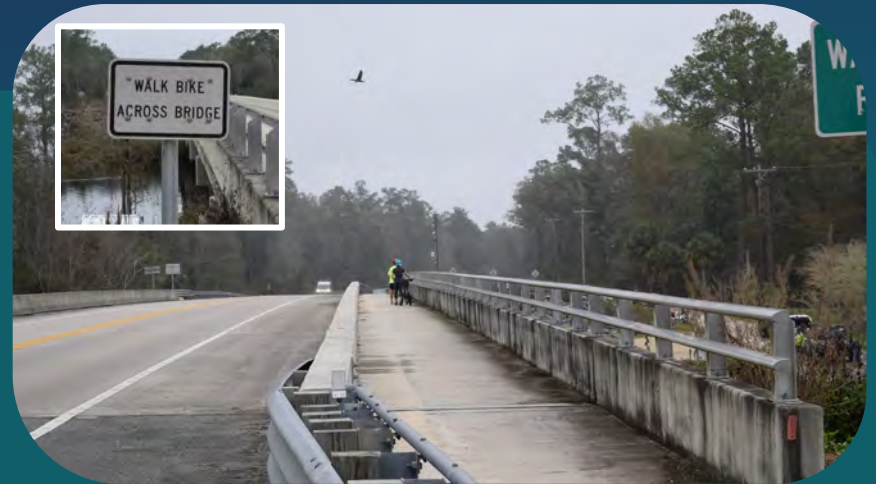
TRAIL CROSSING OPTIONS OVER MCBRIDE SLOUGH

1



CONSTRUCT NEW BRIDGE

2



USE SHOULDER FOR TRAIL CROSSING

STAKEHOLDERS

- FDACS – Florida Forestry Service
- Wakulla Springs State Park
- Florida Department of Transportation District Three
- Wakulla County
- Friends of Wakulla Springs State Park
- Utility Agency Owners



SCHEDULE

Project Kickoff: August 2022 | Project Completion: July 2023

TASK	2022					2023							
	AUG	SEP	OCT	NOV	DEC	JAN	FEB	MAR	APR	MAY	JUN	JUL	
1. DATA COLLECTION AND MAPPING Deliverable: Summary	[Red bar]												
					✓								
2. SITE VISITS Deliverable: Photos & Map Book	[Blue bar]												
					✓								
3. ALTERNATIVE TRAIL ANALYSIS Deliverable: Concept Plans and Estimates						[Red bar]							
										✓			
4. EXISTING CONDITIONS REPORT Deliverable: Draft & Final Report						[Blue bar]							
									✓				
5. PROJECT TEAM AND STAKEHOLDER MEETINGS Deliverable: Meeting Materials & Summary Reports	[Red bar]												
	👤	👤	👤	👤	👤	👤	👤	👤	👤	👤	👤	👤	✓
6. INTERSECTION CONCEPTUAL REVIEW Deliverable: Intersection Analysis Report			[Blue bar]										
					✓								
7. FEASIBILITY STUDY AND DOCUMENTATION Deliverable: Feasibility Study										[Red bar]			
												✓	

 Virtual or Staff Meetings
  Committee Meeting
  Public Meeting

DISCUSSION

