

Example Locations  
Not For Construction

**Potential Improvements**

- Bike Lane
- High Emphasis Crosswalk
- Modify Turn Lane
- Pedestrian Channelization
- Raised Median
- Repair Roadway

**Crash Data 2017-2023**

- Fatal Crash
- Serious Injury Crash
- Bike Serious Inj. Crash
- Ped. Serious Inj. Crash
- Bike Fatal Crash

**Replace Road Markings**

- Replace Road Markings
- Potential Spot Improvement

**Crash Data 2017-2023**

- Fatal Crash
- Serious Injury Crash
- Bike Serious Inj. Crash
- Ped. Serious Inj. Crash
- Bike Fatal Crash

**Potential Improvements**

- Bike Lane
- High Emphasis Crosswalk
- Modify Turn Lane
- Pedestrian Channelization
- Raised Median
- Repair Roadway

**Crash Data 2017-2023**

- Fatal Crash
- Serious Injury Crash
- Bike Serious Inj. Crash
- Ped. Serious Inj. Crash
- Bike Fatal Crash

**Potential Improvements**

- Bike Lane
- High Emphasis Crosswalk
- Modify Turn Lane
- Pedestrian Channelization
- Raised Median
- Repair Roadway



**Potential Improvements**

- Bike Lane
- High Emphasis Crosswalk
- Modify Turn Lane
- Pedestrian Channelization
- Raised Median
- Repair Roadway

**Crash Data 2017-2023**

- Fatal Crash
- Serious Injury Crash
- Bike Serious Inj. Crash
- Ped. Serious Inj. Crash
- Bike Fatal Crash

**Replace Road Markings**

- Replace Road Markings
- Potential Spot Improvement

**Crash Data 2017-2023**

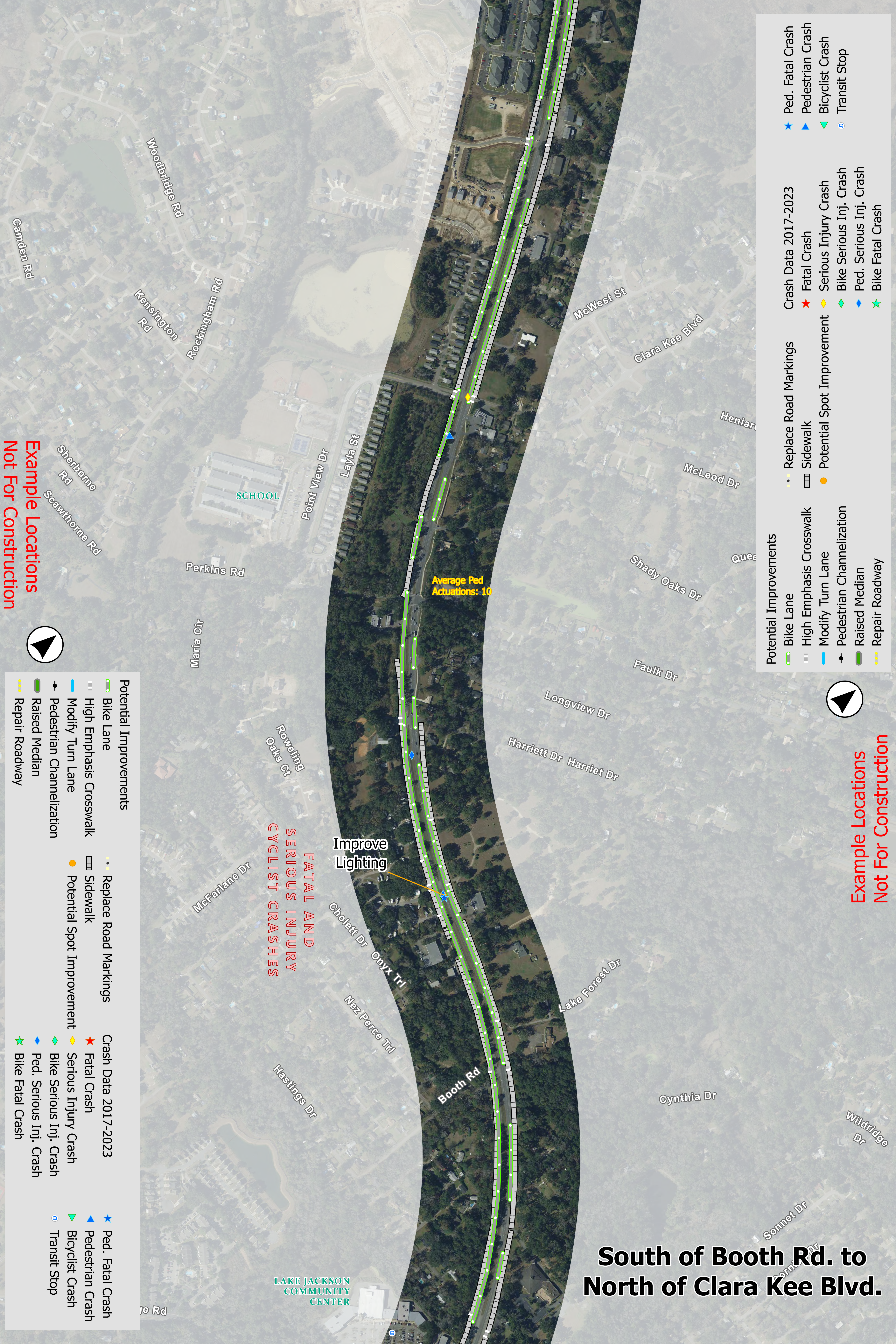
- Fatal Crash
- Serious Injury Crash
- Bike Serious Inj. Crash
- Ped. Serious Inj. Crash
- Bike Fatal Crash

**Potential Improvements**

- Bike Lane
- High Emphasis Crosswalk
- Modify Turn Lane
- Pedestrian Channelization
- Raised Median
- Repair Roadway

Example Locations  
Not For Construction

**South of Homewood Rd.  
to North of Booth Rd.**



**Example Locations  
Not For Construction**

**Example Locations  
Not For Construction**

- |  |                           |  |                         |  |                  |
|--|---------------------------|--|-------------------------|--|------------------|
|  | Bike Lane                 |  | Fatal Crash             |  | Ped. Fatal Crash |
|  | High Emphasis Crosswalk   |  | Serious Injury Crash    |  | Pedestrian Crash |
|  | Modify Turn Lane          |  | Bike Serious Inj. Crash |  | Bicyclist Crash  |
|  | Pedestrian Channelization |  | Ped. Serious Inj. Crash |  | Transit Stop     |
|  | Raised Median             |  | Bike Fatal Crash        |  |                  |
|  | Repair Roadway            |  |                         |  |                  |

- |  |                           |  |                            |  |                         |  |                  |
|--|---------------------------|--|----------------------------|--|-------------------------|--|------------------|
|  | Bike Lane                 |  | Replace Road Markings      |  | Fatal Crash             |  | Ped. Fatal Crash |
|  | High Emphasis Crosswalk   |  | Potential Spot Improvement |  | Serious Injury Crash    |  | Pedestrian Crash |
|  | Modify Turn Lane          |  | Potential Spot Improvement |  | Bike Serious Inj. Crash |  | Bicyclist Crash  |
|  | Pedestrian Channelization |  | Potential Spot Improvement |  | Ped. Serious Inj. Crash |  | Transit Stop     |
|  | Raised Median             |  | Potential Spot Improvement |  | Bike Fatal Crash        |  |                  |
|  | Repair Roadway            |  |                            |  |                         |  |                  |

**South of Booth Rd. to  
North of Clara Kee Blvd.**

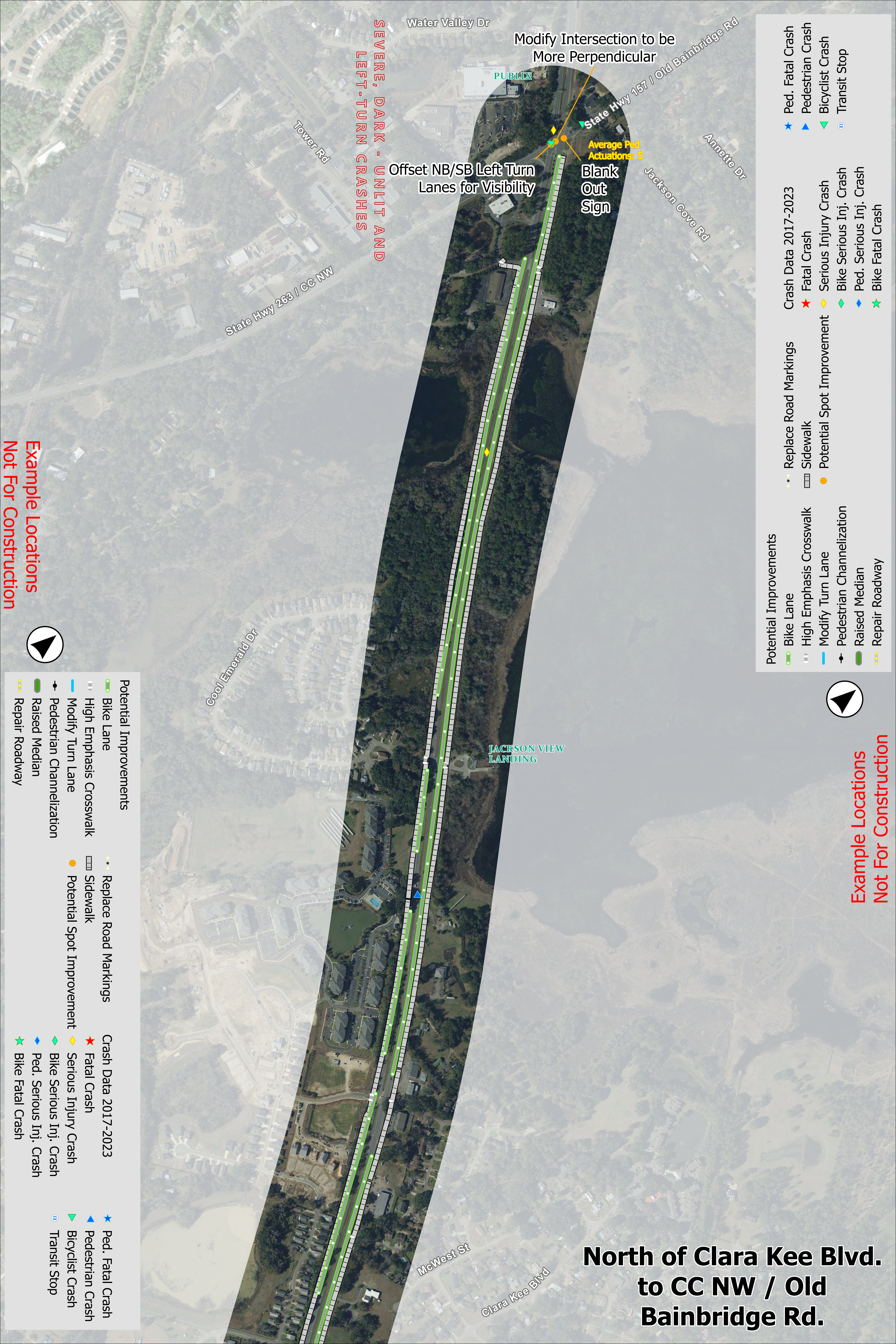
**FATAL AND  
SERIOUS INJURY  
CYCLIST CRASHES**

Average Ped  
Actuations: 10

Improve  
Lighting

LAKE JACKSON  
COMMUNITY  
CENTER

SCHOOL



**Example Locations  
Not For Construction**



- Potential Improvements**
- Bike Lane
  - High Emphasis Crosswalk
  - Modify Turn Lane
  - Pedestrian Channelization
  - Raised Median
  - Repair Roadway
- Crash Data 2017-2023**
- Fatal Crash
  - Serious Injury Crash
  - Bike Serious Inj. Crash
  - Ped. Serious Inj. Crash
  - Bike Fatal Crash
- Crash Data 2017-2023**
- Ped. Fatal Crash
  - Pedestrian Crash
  - Bicyclist Crash
  - Transit Stop

**Example Locations  
Not For Construction**



- Potential Improvements**
- Bike Lane
  - High Emphasis Crosswalk
  - Modify Turn Lane
  - Pedestrian Channelization
  - Raised Median
  - Repair Roadway
- Crash Data 2017-2023**
- Fatal Crash
  - Serious Injury Crash
  - Bike Serious Inj. Crash
  - Ped. Serious Inj. Crash
  - Bike Fatal Crash
- Crash Data 2017-2023**
- Ped. Fatal Crash
  - Pedestrian Crash
  - Bicyclist Crash
  - Transit Stop
- Replace Road Markings**
- Replace Road Markings
  - Sidewalk
- Potential Spot Improvement**
- Potential Spot Improvement

**North of Clara Kee Blvd.  
to CC NW / Old  
Bainbridge Rd.**