

- **SUNTrails Plan.** FDOT is currently establishing a series of guidelines and project prioritization criteria for the development of a SUNTrail program (“Shared Use, Nonmotorized Trails”). The purpose of this system is to determine a series of priority off-road shared used path connections that should be advanced for funding consideration across the state. FDOT is coordinating closely with FDEP in order to align with the FDEP Land Trails Priority Network. CRTPA will coordinate with both FDOT and FDEP to help facilitate the identification of these priority locations in the Tallahassee region, and will incorporate these findings as part of the next *Connections 2040 RMP* update.
- **Additions to the Tallahassee-Leon County Greenways program.** In May of 2015, the Tallahassee-Leon County Planning Department adopted its new Greenways Master Plan. When comparing the projects in this plan to the ones included in the *Connections 2040 RMP*, there are three new projects that were previously not identified. As the *Connections 2040 RMP* is updated or amended, CRTPA will work with Tallahassee-Leon County to incorporate these projects into the document as a part of the Opportunities Plan. More information on the Greenways Master Plan can be found at the following link:
<http://www.talgov.com/Uploads/Public/Documents/planning/pdf/enviro/gwmp-2015-update-02.pdf>.

Welaunee Boulevard Extension from Shamrock Street to Roberts Road



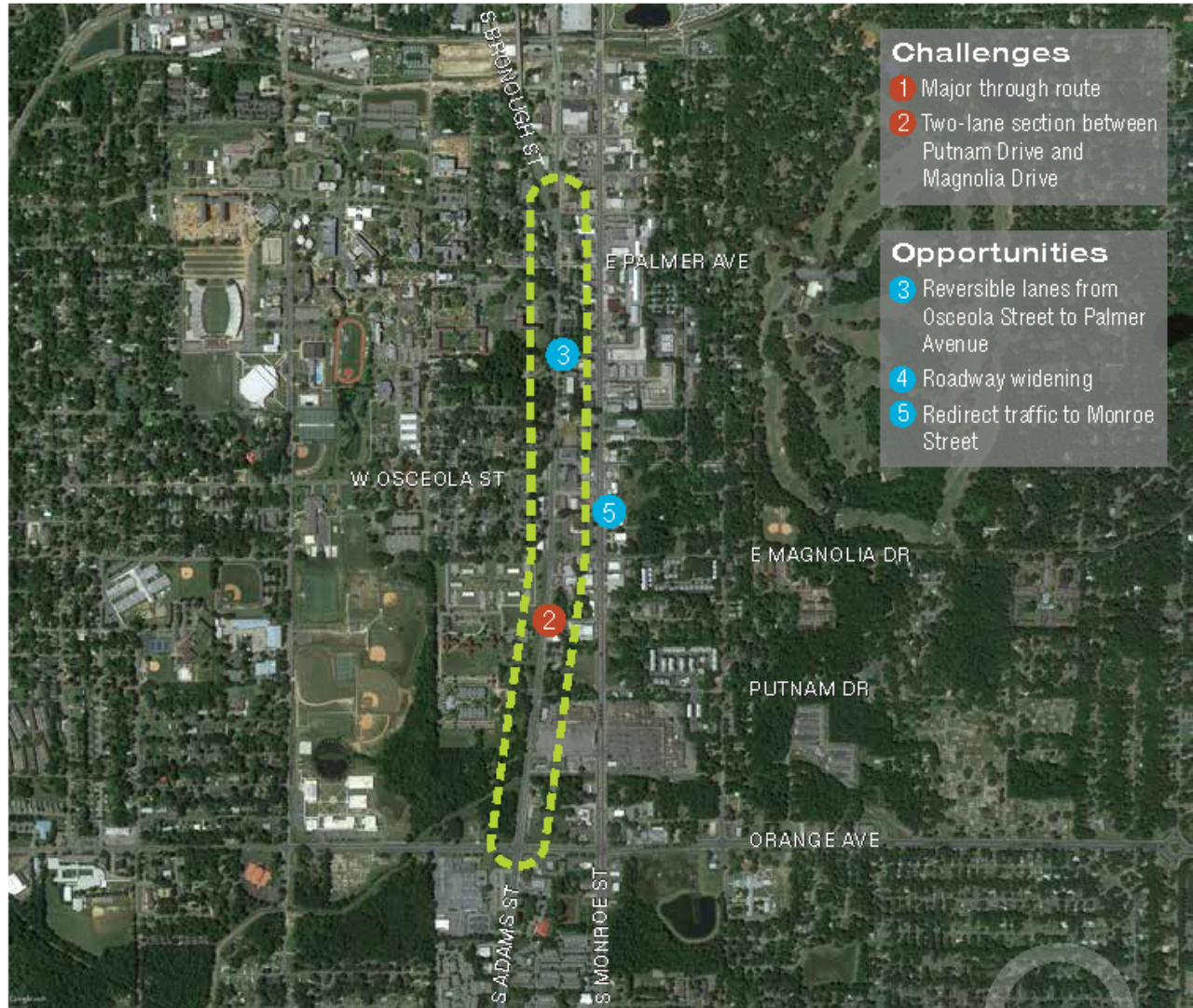
Objective

- Plan effectively for access and land uses along proposed four-lane roadway.

Next Steps

- Develop corridor study and access management plan in coordination with Tallahassee, Leon County, and Florida Department of Transportation.

Adams Street from Orange Avenue to S Bronough Street (1.1 miles)



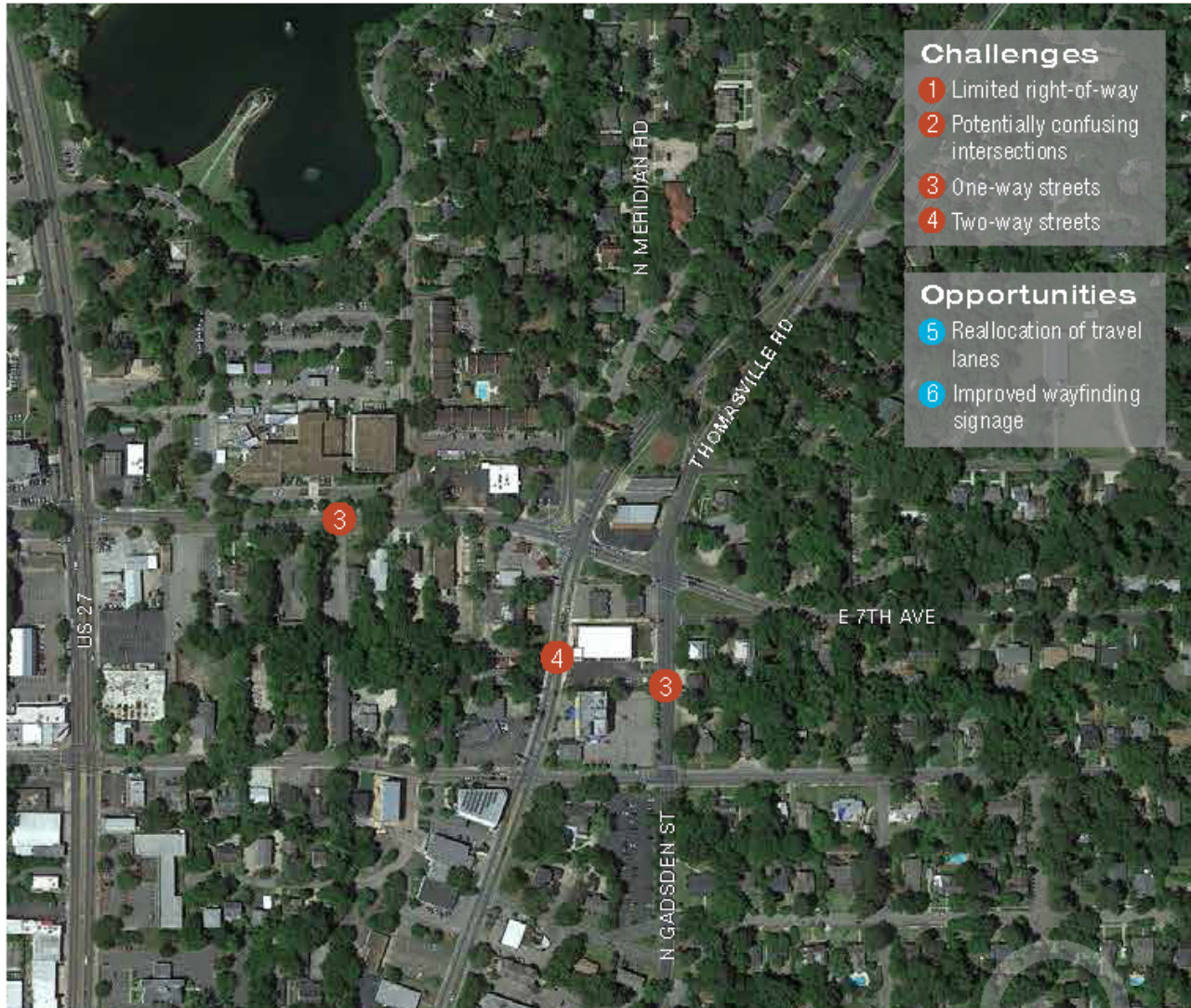
Objective

- Mitigate traffic congestion bottleneck.

Next Steps

- Identify potential stakeholders including FAMU.
- Coordinate with FAMU Master Plan to determine intent for space in southeast along Adams Street.

Five Points (E 7th Avenue / Thomasville Road / N Gadsden Street)



Objective

- Improve traffic flow and intersection operations.

Next Steps

- Develop potential design alternatives that may include roundabouts, one-way conversions, or roadway realignment.

I-10/US 19 Interchange



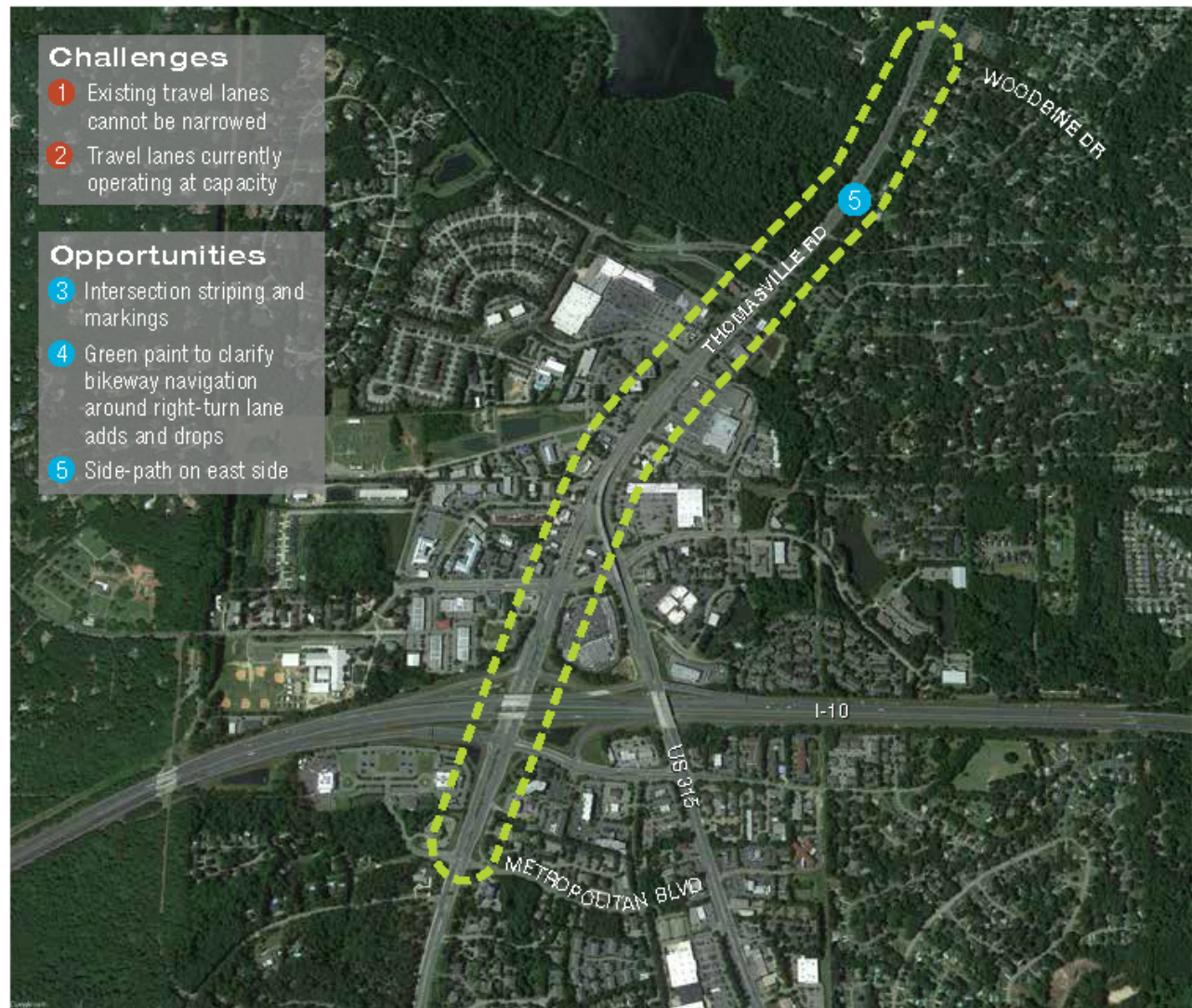
Objective

- Encourage economic development for freight around the interchange.

Next Steps

- Coordinate with Jefferson County as primary stakeholder.
- Communicate with current users of Industrial Park to the north.
- Survey regional freight companies.
- Evaluate location with other potential freight development locations in the region.

Thomasville Road from Woodbine Drive to Metropolitan Boulevard (1.5 miles)



Challenges

- 1 Existing travel lanes cannot be narrowed
- 2 Travel lanes currently operating at capacity

Opportunities

- 3 Intersection striping and markings
- 4 Green paint to clarify bikeway navigation around right-turn lane adds and drops
- 5 Side-path on east side

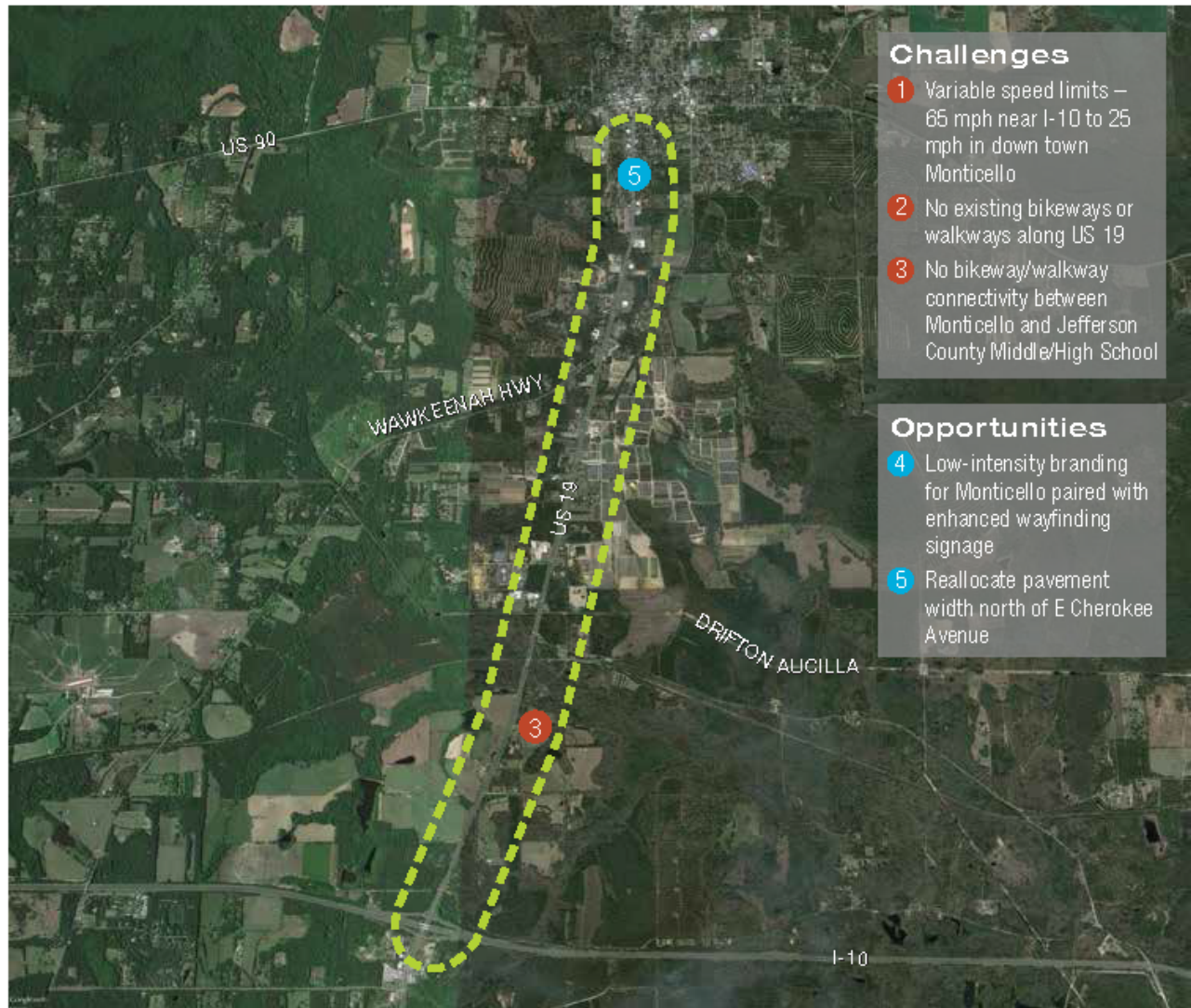
Objective

- Improve existing bikeway (bike lanes).

Next Steps

- Discuss future development plans with the City of Tallahassee and Leon County.
- Include Florida DOT as major stakeholder during feasibility study.

US 19 from I-10 to US 90 (4.9 miles)



Objective

- Enhance travel from Interstate 90 to Monticello.

Next Steps

- Survey the Jefferson County Middle/High School to determine their students' locations of residence.

US 27 from 9th Avenue to 6th Avenue (0.2 miles)



Objective

- Reduce vehicular speeds and enhance downtown character.

Next Steps

- Establish the intended function of Havana's streets.
- Develop a Havana Town Plan.