

CRTPA

REGIONAL FREIGHT STUDY



Agenda

- Attendee Introductions
- Study Introduction
- Existing Conditions
- Future Conditions
- Group Discussion



Purpose and Goals

Identify freight movement trends, challenges, and opportunities for improvement within the four-county region.

Goals

1. Improve safety
2. Maintain and improve resiliency
3. Improve system connectivity and function
4. Implement strategies to improve supply-chain
5. Improve trade and logistics partnerships
6. Capitalize on emerging technologies

Study Schedule

January 2023

March 2024

Stakeholder Engagement

Committee Meetings

Interviews with industry representatives

Data Collection

Literature Review

Known Freight Flows and Volumes

Conditions

Movement Trends

Existing/Planned Development

Priority Areas

Anticipated Growth

Recommendations

Policy

Infrastructure

Technology

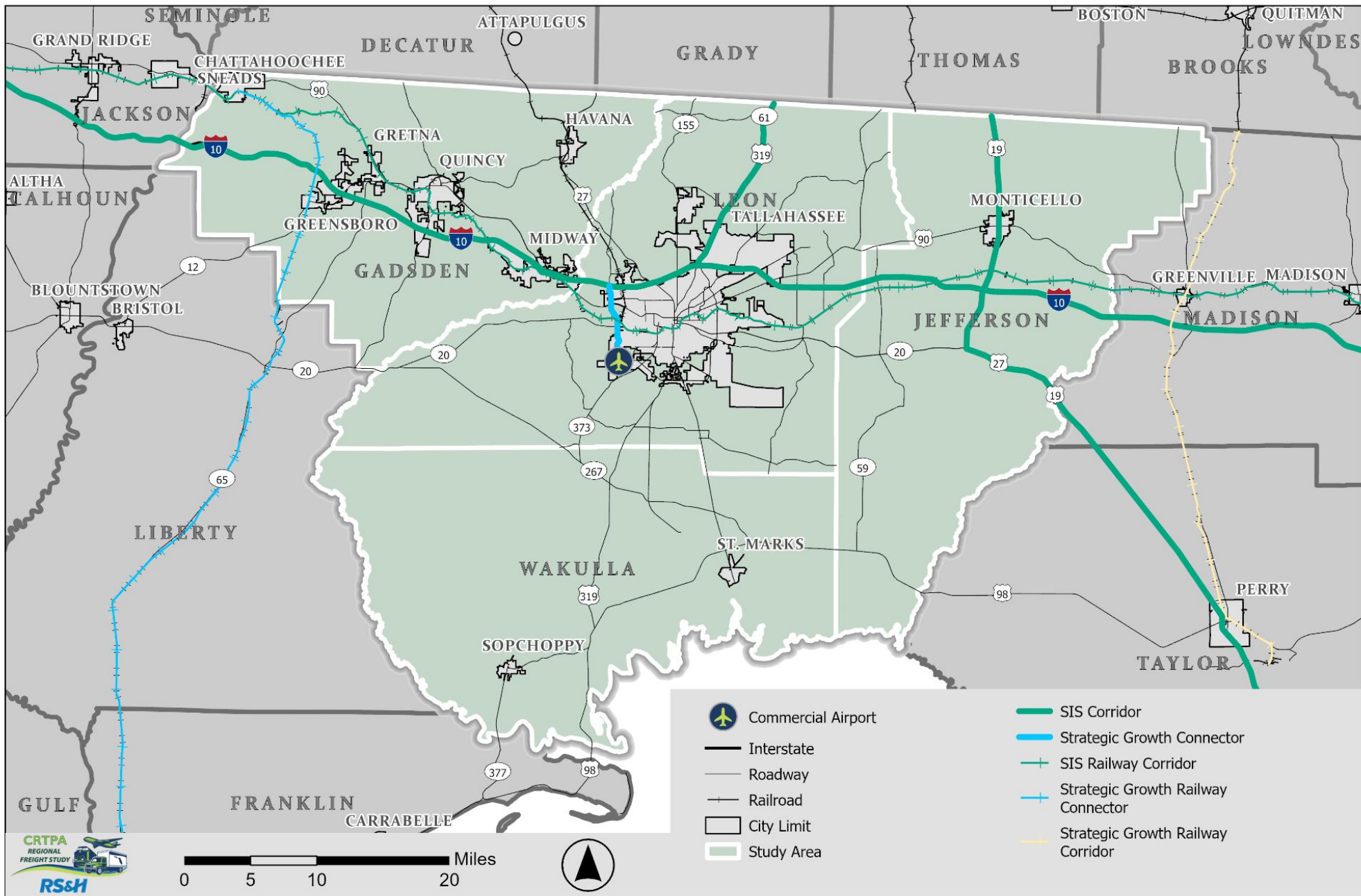
Performance Management

Stakeholder Engagement

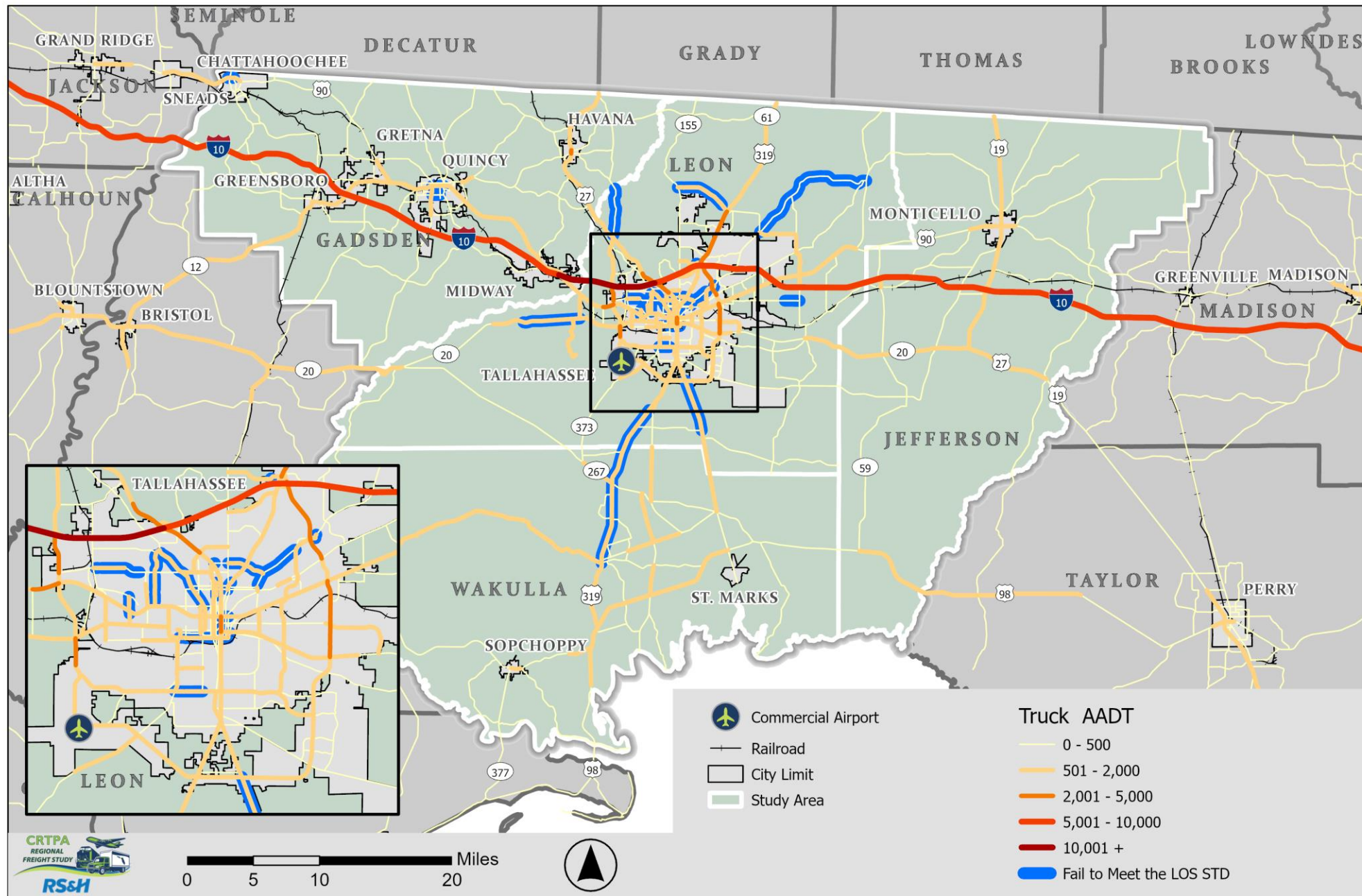
- Two Stakeholder Committee meetings
- Eight Individual/small group meetings
- Stakeholders included
 - Amazon
 - County planning staff
 - FDOT representatives
 - Economic development staff
 - Airport/rail/and port representatives

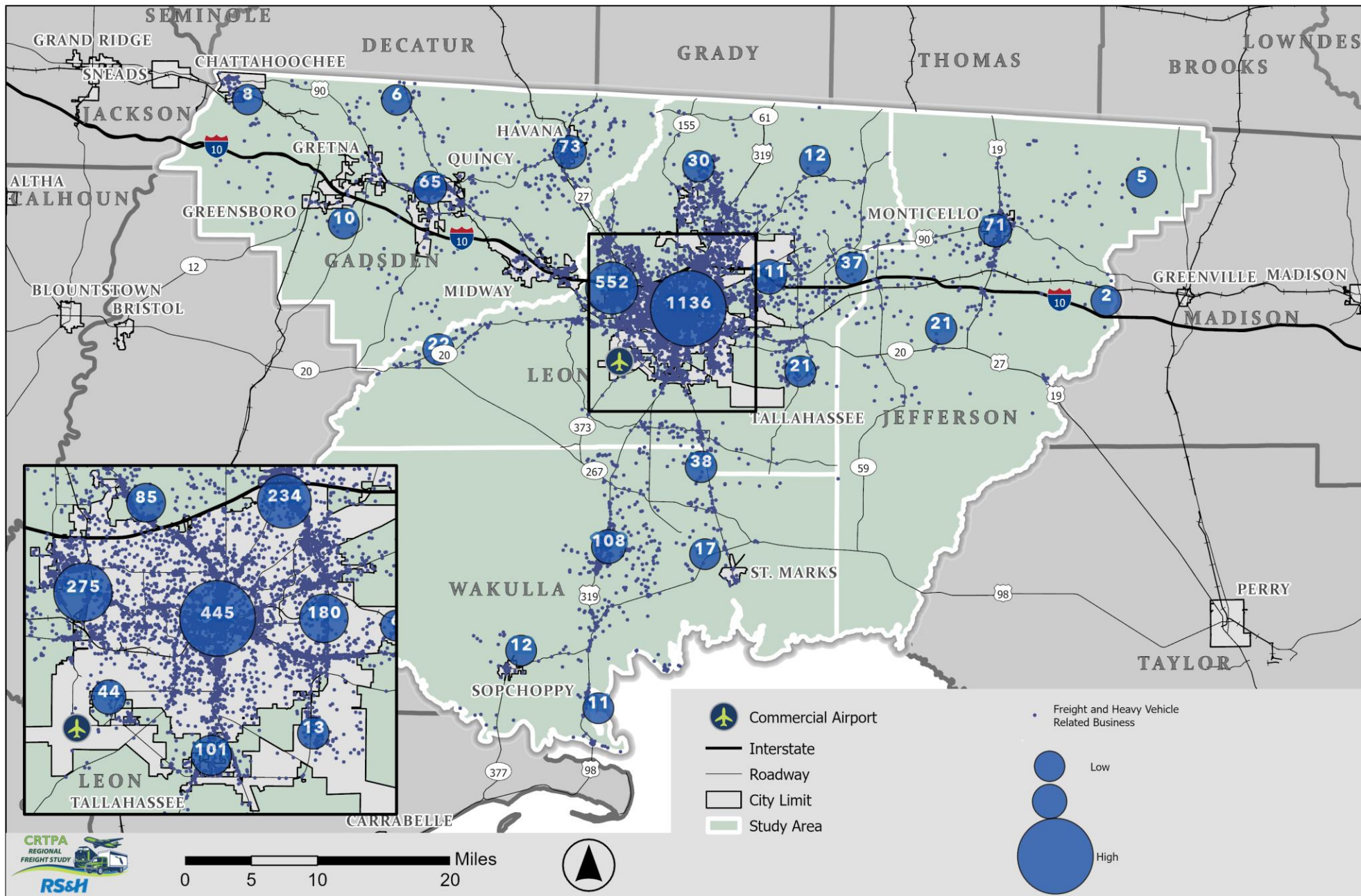
Existing Conditions Review





Source: FDOT Systems Implementation Office





Source: FDOT 2021 and CRTPA CMP

Passenger Rail Consideration

- “FDOT is potentially supportive of a service restoration in this corridor as an Amtrak National Network long-distance train that would not require operating financial support from the state” (FDOT Rail System Plan Ch 3, 2022)
- Met with FDOT and rail representatives:
 - Both groups indicated that infrastructure improvements would be needed.
 - Development of passenger rail would require increased logistical coordination with freight movements.

Future Conditions Review



Future Conditions Review: Population

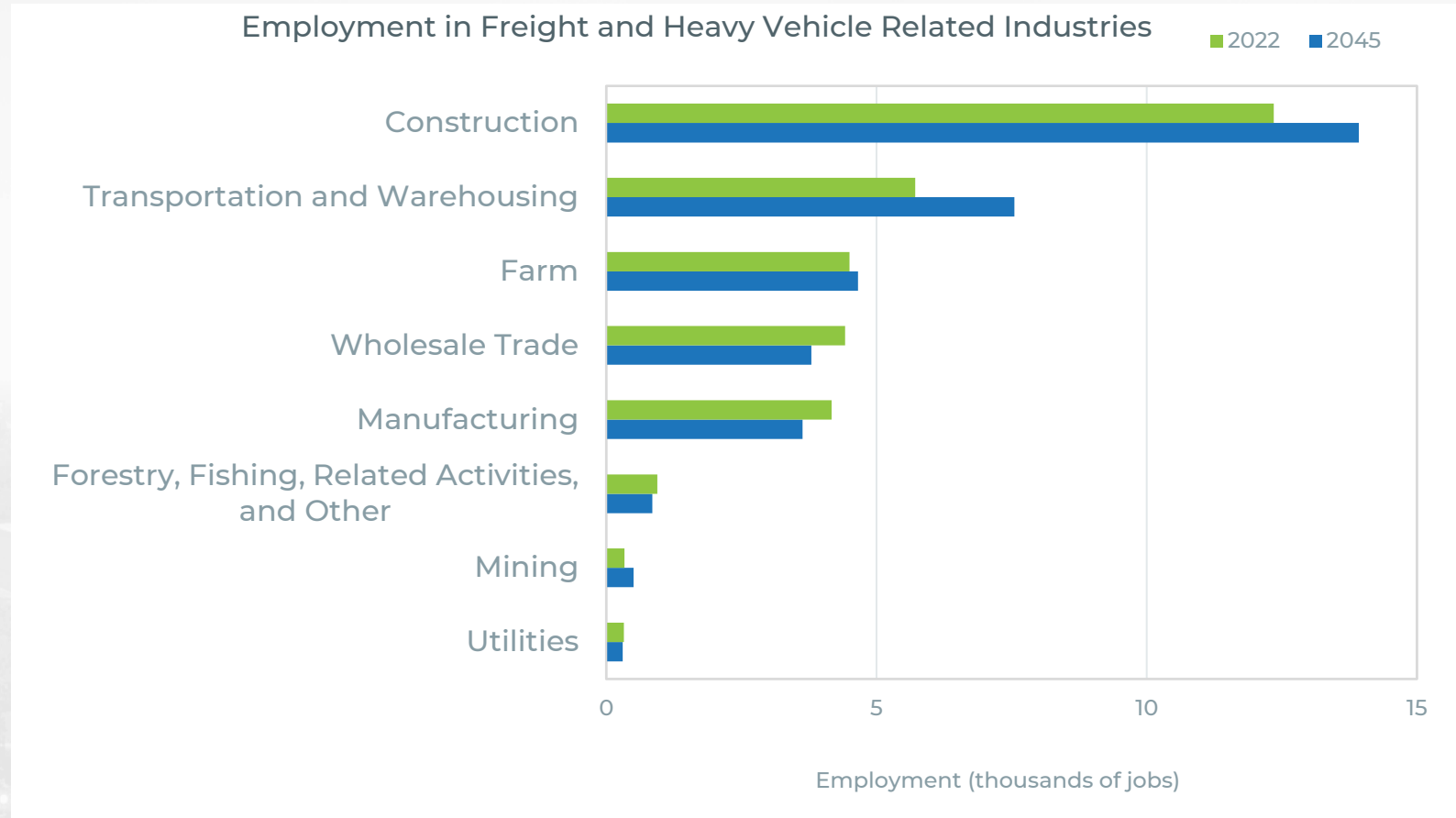
- More People = More Demand
- Florida outpaces CRTPA
- Impacts still exist

	Leon	Gadsden	Wakulla	Jefferson	CRTPA Region	Florida
2022 Population (000s)	299.13	43.97	35.17	14.92	393.19	22,276.13
2045 Population Medium Projection (000s)	337.9	44.9	44.1	16	442.9	27,270.00
Total Population Change 2022-2045 (000s)	38.77	0.93	8.93	1.08	49.71	4,993.87
% Population Change 2022-2045	11.47%	2.07%	20.25%	6.75%	11.22%	18.31%

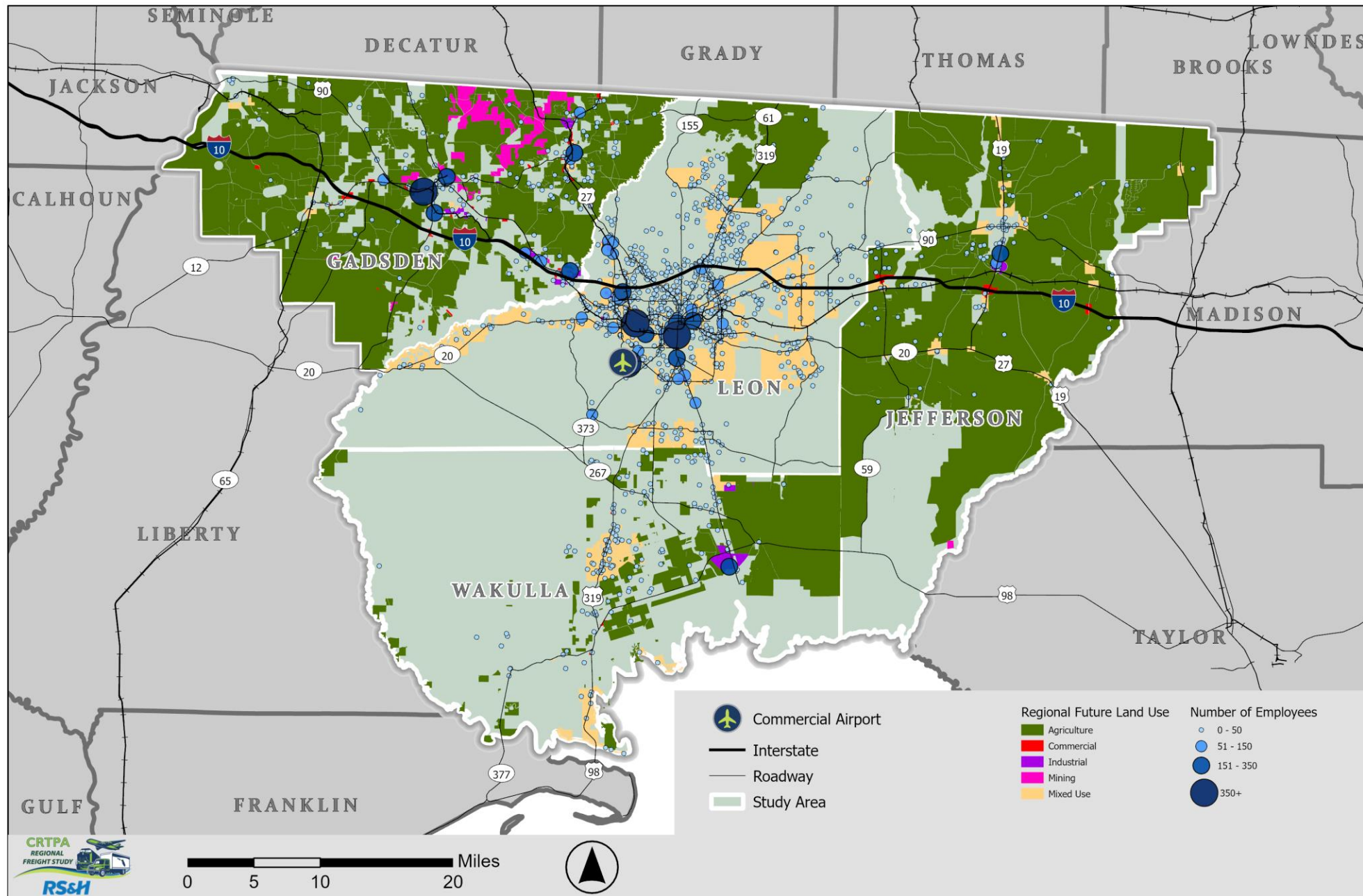
Source: BEBR

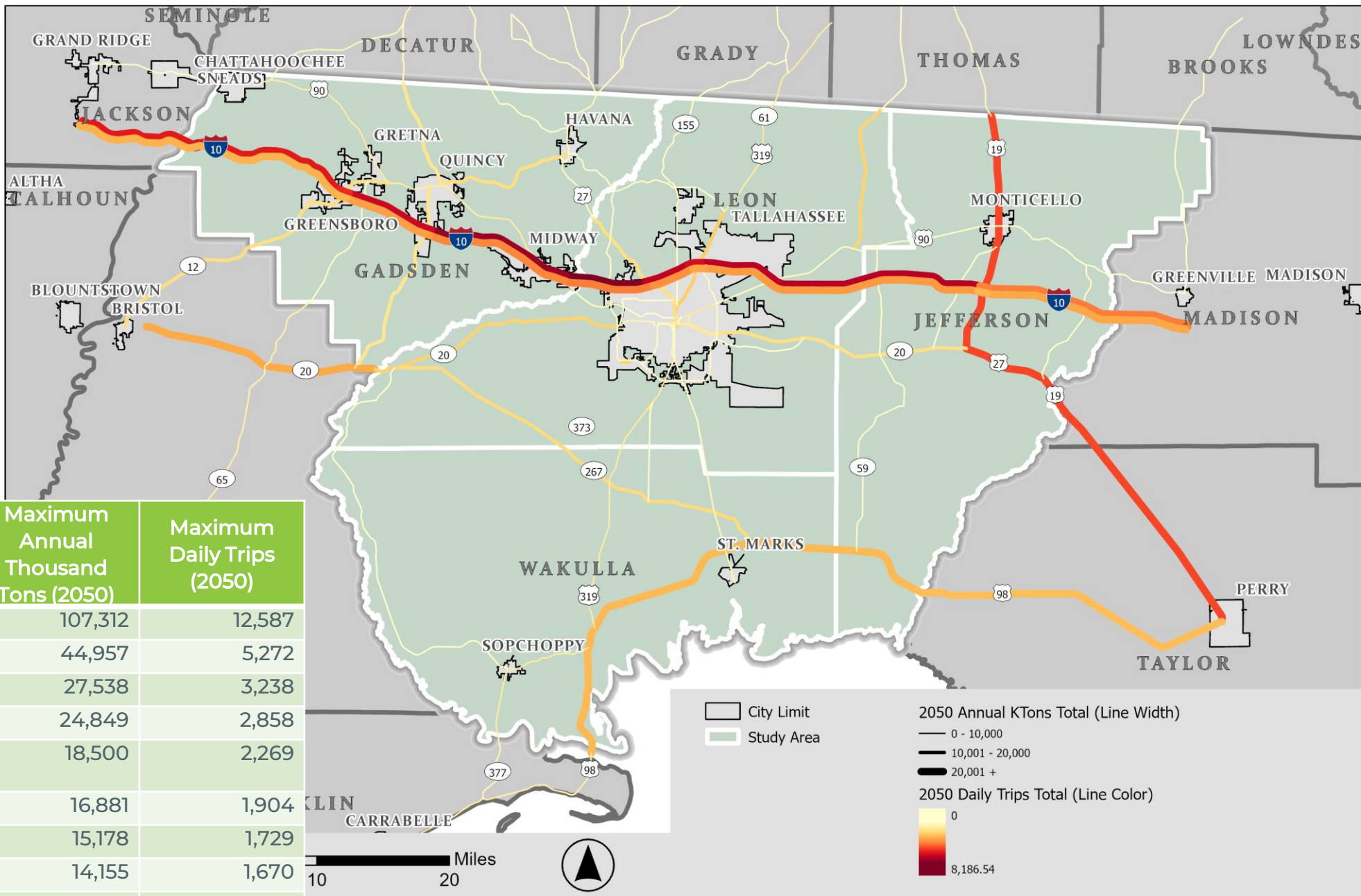
Future Conditions Review: Freight Employment

- Ability to respond to demand
- Construction
- Transportation / Warehousing
- Farming and Mining



Source: Woods And Poole





Corridor	Maximum Annual Thousand Tons (2050)	Maximum Daily Trips (2050)
I 10	107,312	12,587
US 19	44,957	5,272
SR 20	27,538	3,238
US 98	24,849	2,858
Thomasville Rd	18,500	2,269
SR 267	16,881	1,904
SR 12	15,178	1,729
US 27	14,155	1,670
Apalachee Pkwy	10,473	1,194
Mahan Dr	9,835	1,127



Source: FAF5

Recommendations and Needs (Underway)



Needs and Recommendations

• Sample Needs Categories

- Modal expansion
- LOS/congestion
- System redundancy / routing
- Infrastructure conditions
- Origin/destination and land use

• Sample Recommendations

- Policy/Technology
 - Freight clustering
 - Pursue freight funding
- Infrastructure
 - Track and bridge improvements
 - Safety studies
 - Roadway Improvements

Group Discussion



Thank You!

RS&H

