

January 17, 2023



## RETREAT AGENDA ITEM

### REGIONAL FREIGHT STUDY

#### **STATEMENT OF ISSUE**

A presentation kicking-off the Regional Freight Study will be provided by RS&H.

#### **BACKGROUND**

This study is being conducted to identify freight movement trends, challenges, and opportunities for improvement within the Capital Region Transportation Planning Agency (CRTPA) region. Spurred by growth throughout the state and the recent pandemic, CRTPA is experiencing expanding freight movements and increased industry presence. This analysis will consider the modes, origins/destinations, and types of goods moving through the area to understand the existing conditions, as well as identifying opportunities to improve existing and future freight mobility.

The CRTPA region is home to several Strategic Intermodal System Highways (SIS) and a major RailUSA line (Florida Gulf and Atlantic Railroad). Though the region typically imports more than is currently being exported, the movement of freight through the area has become a significant consideration. The region has seen significant internal growth and development in recent years. Historically, regional freight considerations were associated with large, heavy duty commercial vehicles concentrated along the I-10, the RailUSA corridor and Capital Circle. Over the past several years, freight challenges have expanded to include light and medium size commercial vehicles via e-commerce as (exacerbated by the COVID 19 pandemic), which has led to the increase of freight movements within the region. The new Amazon Logistics center adjacent to I-10 is an indicator of this increase in freight related to e-commerce.

This understanding of the needs and conditions will provide the foundation for the development of project and policy recommendations to mitigate these needs. The goal of this project is to ensure the CRTPA supports the efficient movement of freight into the future. This study will align the CRTPA with the increased federal focus on freight mobility and comply with the federal Performance Measures and Targets as identified within the FAST ACT.

#### **ATTACHMENT**

Attachment 1: Draft Presentation



**ATTACHMENT 1**



**CRTPA**  
*Regional Freight Study Kick-Off*

*January 17, 2023*

## AGENDA

- » Project Purpose
- » Task Overview
- » Needs and Priorities
- » Next Steps
- » Discussion







## Project Purpose

- » Identify Local and National Trends
  - Industry types
  - Increasing local development
  - Changes in transportation
    - *E-commerce*
  - Population and employment
- » Identify Needs and Opportunities
  - Infrastructure
  - Land use / development
  - Planned industry expansions/DRIIs
- » Develop Recommendations

### GOAL

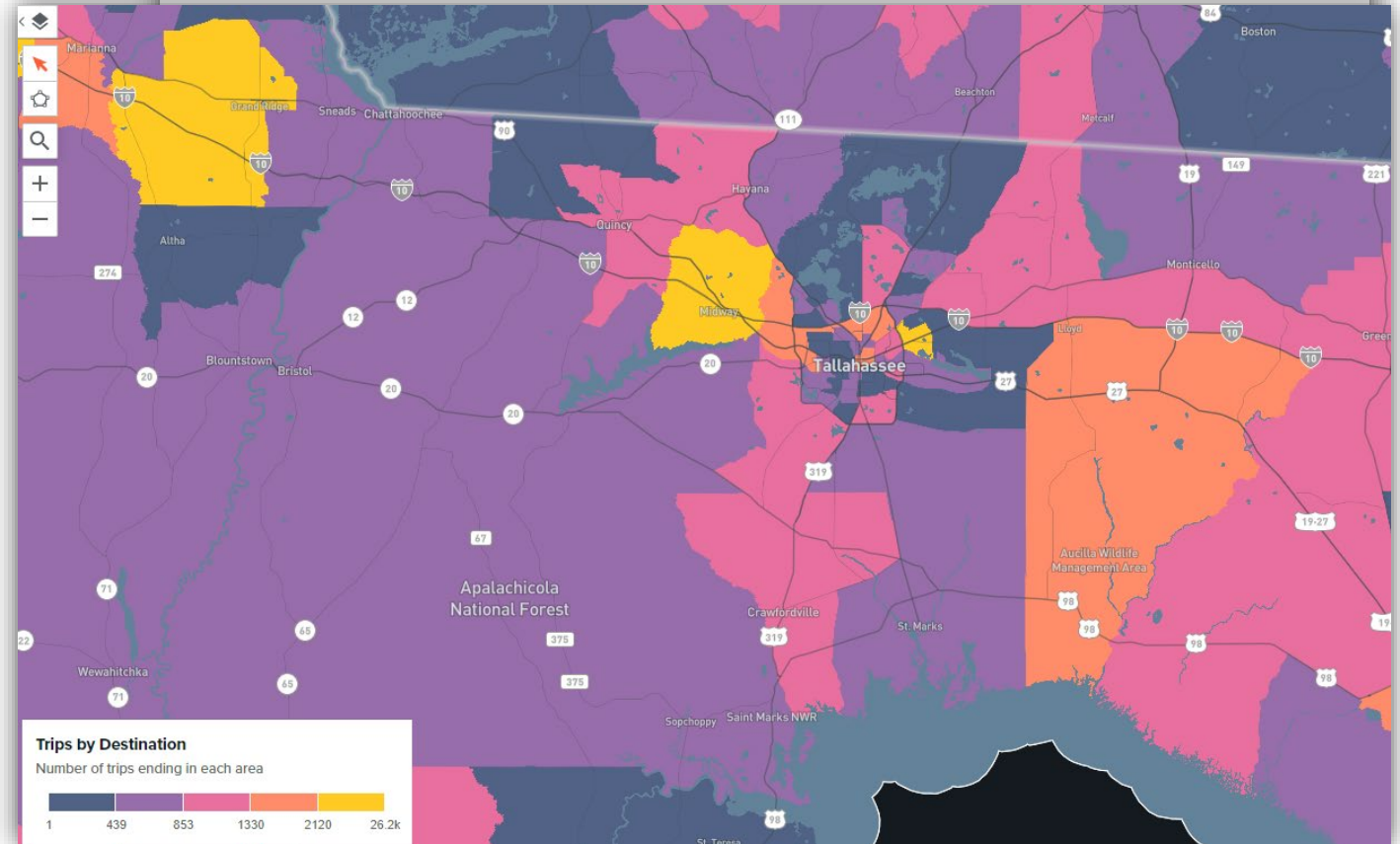
To help the region support the efficient and safe movement of freight into the future.

This study will position CRTPA to align with state plans/projects and federal requirements on freight mobility and comply with the requirements of the recent federal transportation bill (IIJA/BIL).



## Previous Freight Efforts

- » FDOT Conducted County and District Studies in 2013/2014
  - Nearly a decade old
  - Not MPO specific
  - Rapidly changing trends
- » Will work to identify current movements and trends
  - Origin/destination
  - Safety considerations
  - Volumes
  - Industry types



Leon	275,487	Bulk Movement in Boxcars	750,443	Bulk Movement in Boxcars	721,387
Liberty	8,365	Lumber or Wood Products	166,068	Lumber or Wood Products	273,067
Okaloosa	180,822	Nonmetallic Minerals	823,231	Bulk Movement in Boxcars	865,287
Santa Rosa	151,372	Nonmetallic Minerals	454,009	Clay, Concrete, Glass or Stone	186,747
Wakulla	30,776	Chemicals or Allied Products	64,715	Chemicals or Allied Products	93,674
Walton	55,043	Petroleum or Coal Products	271,307	Nonmetallic Minerals	946,280
Washington	24,896	Bulk Movement in Boxcars	47,752	Lumber or Wood Products	65,161



## Task Overview

### » Project Management and Stakeholder Coordination

- State/local governments
- Industry representatives
- Local agencies
  - *Apalachee Regional Planning Council*
  - *Economic Development Councils*

### » Data Collection and Literature Review

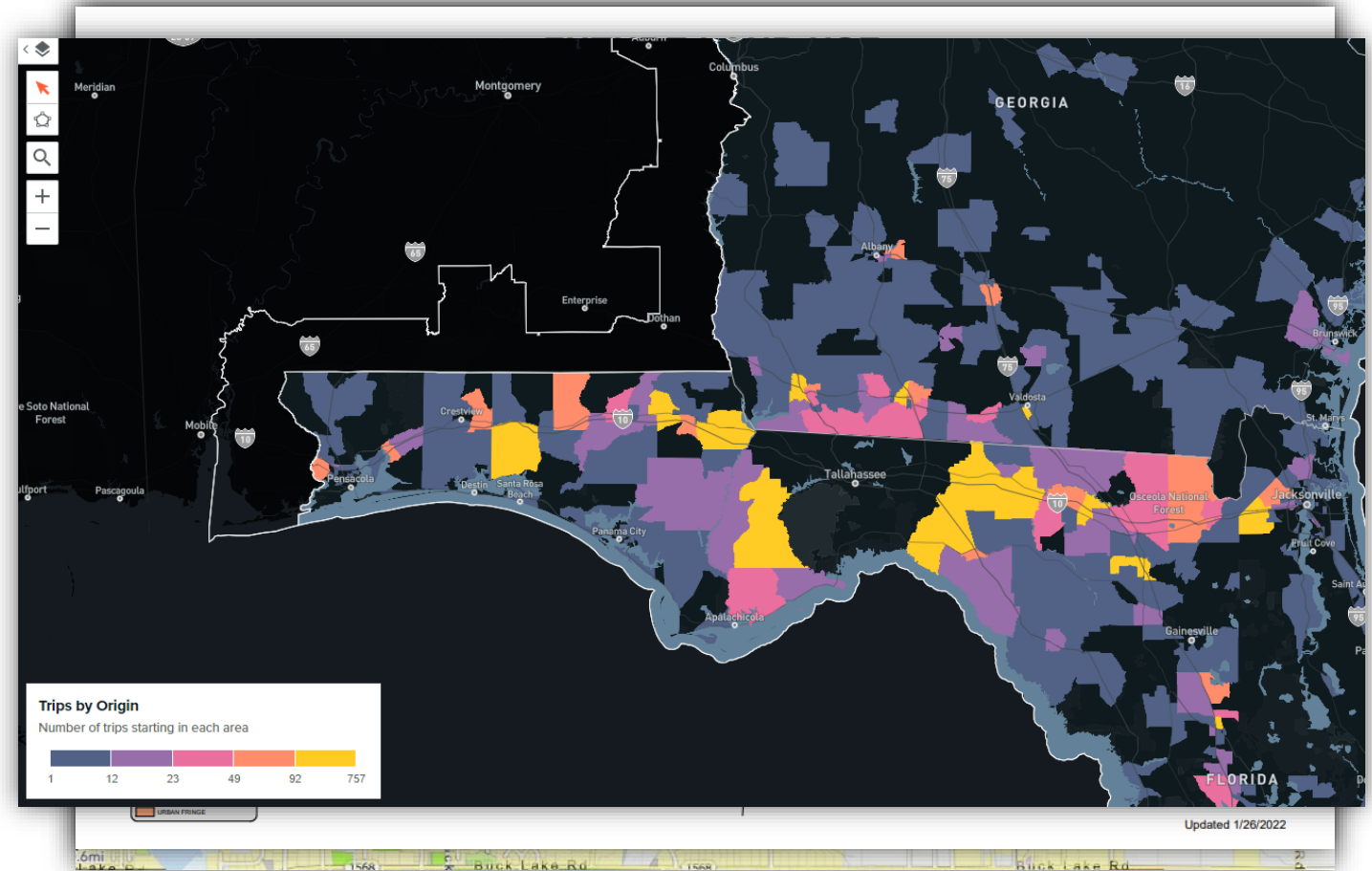
- Available peer efforts and data
  - *FDOT/National data*
- Identify existing regional data

Anticipated Data Sources		Anticipated Data
Federal and (FDOT, FDEO, BEP, NP	Anticipated Literature Review	
		Transportation Demand Model (TDM)
		and CMP
	Statewide Rail Plan	
	Statewide Freight Plan	
	Statewide Aviation Plan	jects
	Statewide Truck Parking Study	th data
Loc	Regional Mobility Plan	amework (FAF5)
	Congestion Management Plan	ure
	Tallahassee-Leon County ITS Master Plan	
Economic Development Authorities	Countywide Transportation Studies	lopment
	Regional Modal Studies/Plan (Port/Airport)	improvement
	Economic Development Studies/Plans	
		Focus areas
		Planned development
		Industry sites



## Task Overview

- » Existing & Future Conditions
  - Infrastructure
  - Opportunity areas
  - Industry growth
  - Socioeconomic
- » Recommendations
  - Policy
  - Infrastructure
  - Technology
- » Documentation





## Anticipated Opportunities, Needs, and Priorities

- » Rapid E-commerce Growth
  - Distribution center(s)
  - Light/medium freight
- » Improving Railroad Condition
  - Rail weight limits and safety
- » Improve Air Freight Condition
  - Tallahassee International Airport
  - Drones
- » Managing Truck Movement and Parking
  - Major roadways and highways
  - Parking and staging
  - Curb/delivery management
- » Integration with FDOT
  - Statewide Intermodal System (SIS)
  - Upcoming projects
- » Use of Technology/  
System Optimization
  - Corridor efficiency
  - Planning for the future
  - Connected and autonomous vehicles
- » Freight Mobility
  - Safety and efficiency
  - Land use cohesion
  - Truck routing
  - Long haul and delivery
  - Relationship with other modes





## Next Steps

- » We'll Get Started... Right Now!
  - Data identification and gathering
  - Literature/peer review
  - Outreach to planning partners
  - Review of trends
  
- » 13-14 Month Completion
  - Targeting March 2024



# *Discussion*

*What are your priorities or concerns with freight in the region?*

*Thank you!*

**RS&H**

