

May 15, 2018



AGENDA ITEM 6 A

**APALACHEE PARKWAY/MAGNOLIA DRIVE INTERSECTION
UPDATE**

TYPE OF ITEM: Discussion

STATEMENT OF ISSUE

The Florida Department of Transportation will provide an update on scheduled modifications to this intersection.

ATTACHMENT

Attachment 1: Draft Presentation



Florida Department of Transportation District Three

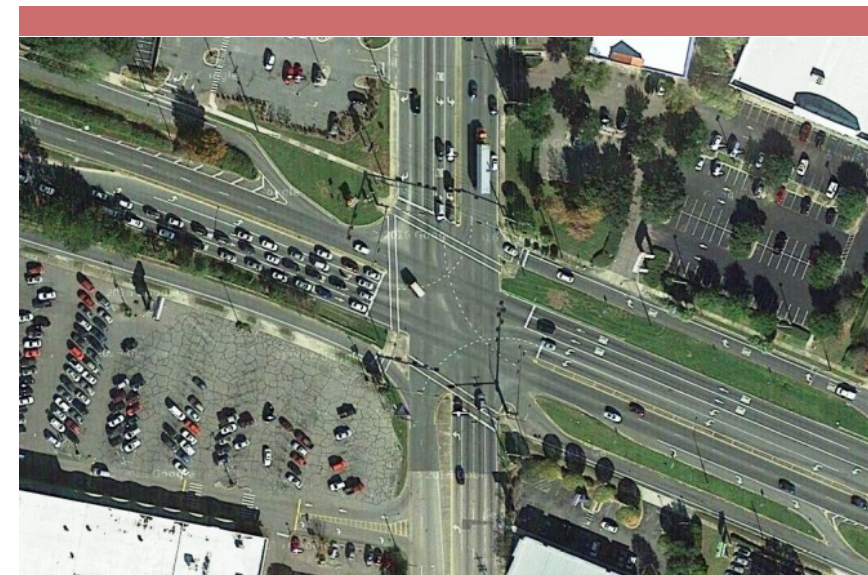
SR 20 (US 27/APALACHEE PKWY.) AT SR 265 (CR 265/MAGNOLIA DR.)

INTERSECTION IMPROVEMENTS

438148-1-32-01

Capital Region Transportation Planning Agency Meeting

May 15, 2018





SR 20 (US 27/ Apalachee Parkway) at SR 265 (CR 265/Magnolia Drive)

Leon County

FPID 438148-1-32-01



Safety Improvement Project

Project Length is approximately 1,000 feet

Posted speed 45 mph



Project Need

- Project is a result of Safety Study
- High incidence of crashes
- No existing marked crossing on east leg of intersection

Project Goals

- Improve Pedestrian Safety
- Improve efficiency of pedestrian movements
- Minimize conflicts between motorists and pedestrians
- Eliminate conflicts between turning motorists
- Maintain Access To/From Businesses
 - The Vitamin Shoppe
 - Parkway Shopping Center
 - CVS/DSW



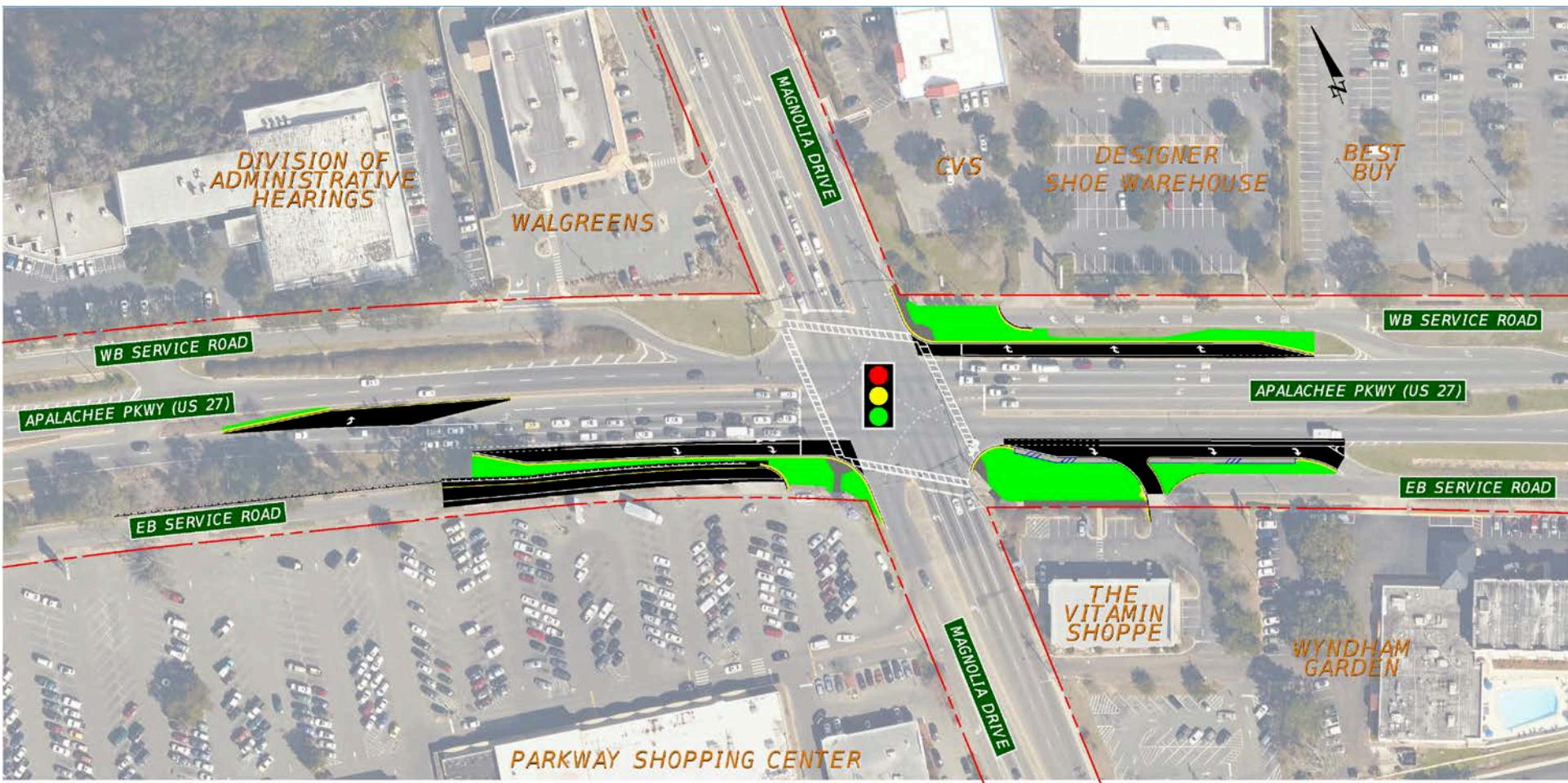


Project Improvements

- Add pedestrian crossing on east leg
- Convert crossing on west leg to single crossing
 - Eliminates second conflict point and need for refuge island
- Signals used to enhance pedestrian movements
 - Yellow flashing arrow for right turns during walk cycles
 - Uses a Leading Pedestrian Interval - Pedestrians begin crossing before motorists get green signal
- Relocate right turns from service roads to Apalachee Pkwy.
- Matches driver expectancy and eliminates illegal right turns
- Add LED signs on mast arm signals (EB & WB)
- “TURNING TRAFFIC MUST YIELD TO PEDESTRIANS”
- Use special emphasis crosswalk markings
- Add lighting to enhance pedestrian visibility



Project Improvements





Project Improvements - West of Intersection

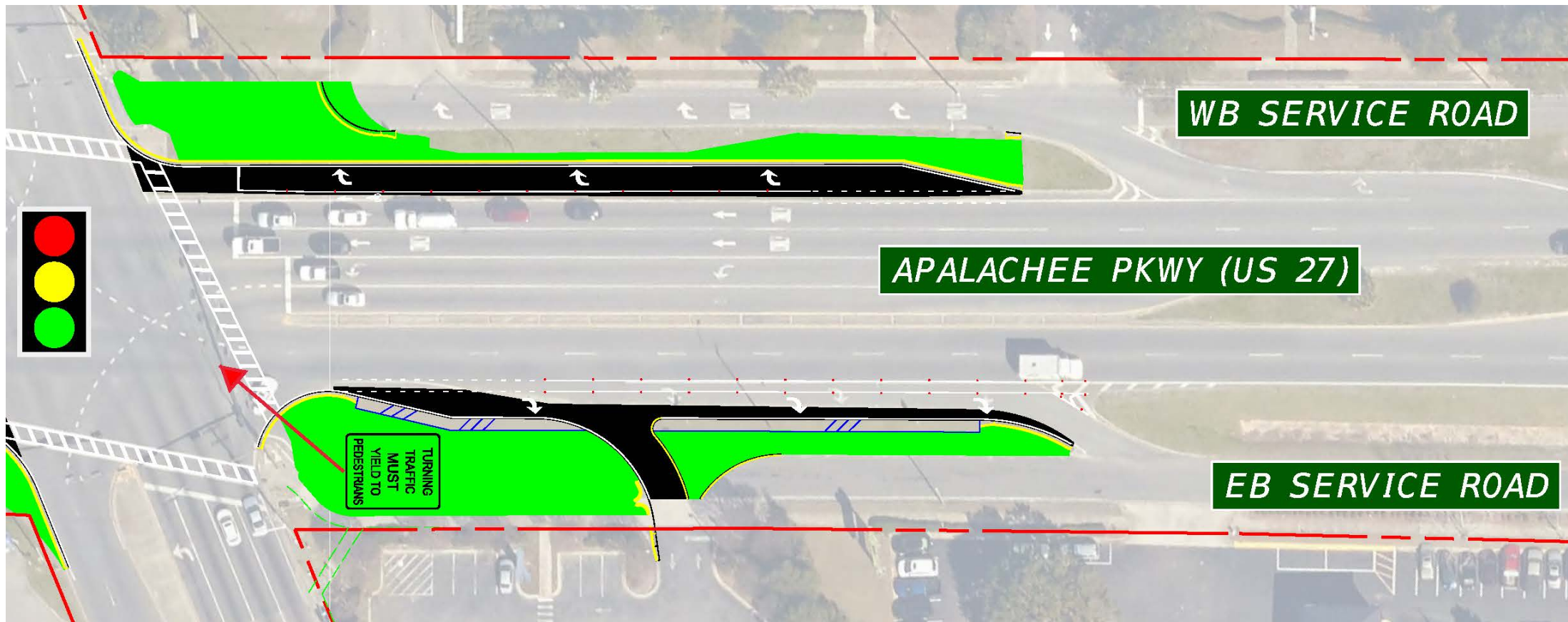




Project Improvements - West of Intersection

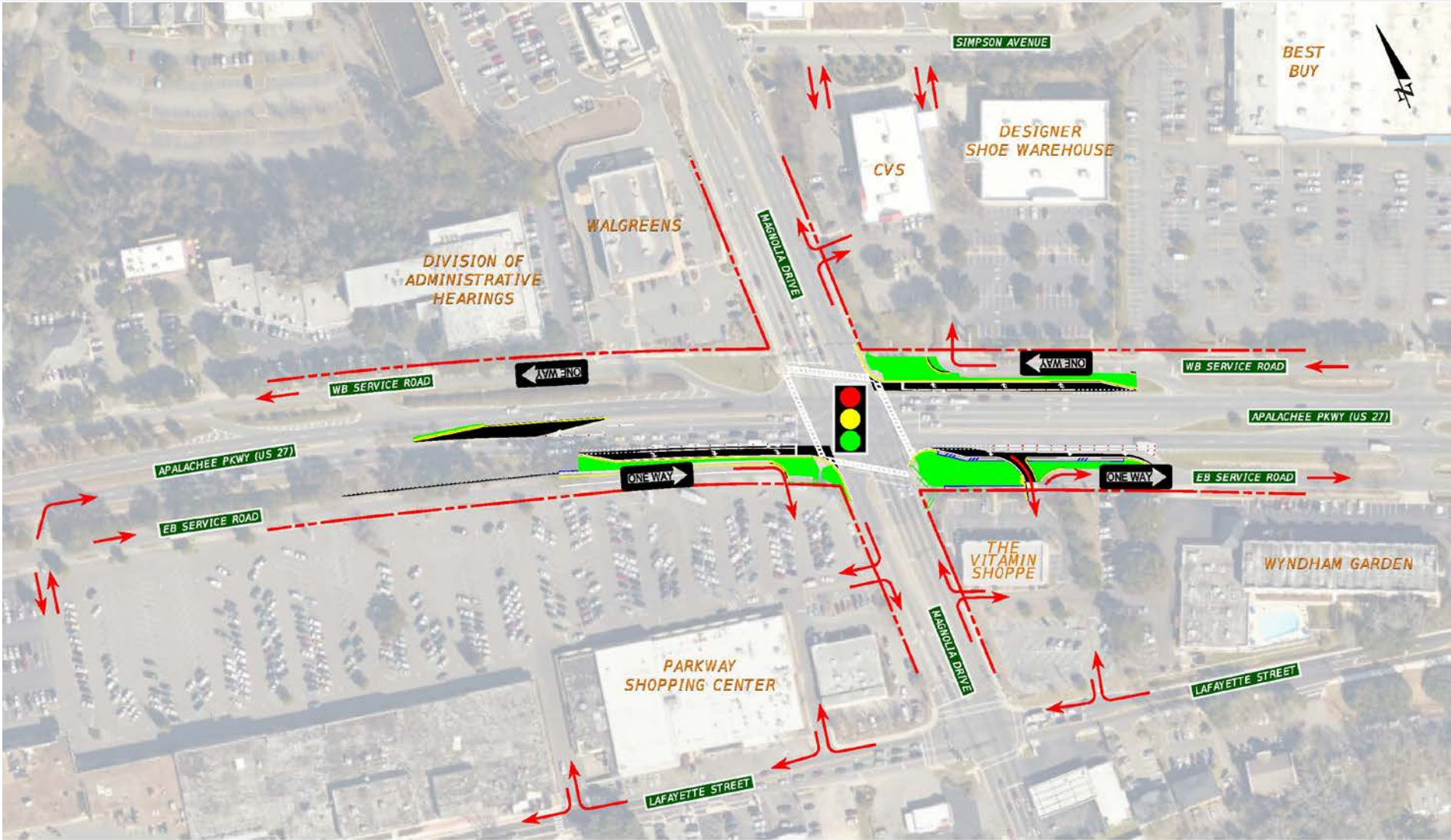
- Elevation difference between SR 20 and EB service road







Property Access





Project Status

Project To Be Constructed With SR 265 Resurfacing (FPID 437365-1)

- From Apalachee Pkwy. to 7th Avenue

SCHEDULE

- Project Letting – September 13, 2018
- Begin Construction – January 2019
- End Construction – September 2019

BUDGET

- Approximately \$685,000 for Apalachee Pkwy. intersection improvements
- Approximately \$2,500,000 for SR 265 resurfacing