

November 15, 2022



AGENDA ITEM 7 A

TALLAHASSEE TO HAVANA TRAIL FEASIBILITY STUDY

TYPE OF ITEM: Action

STATEMENT OF ISSUE

A technical feasibility study evaluating a potential multi-use trail connection between Tallahassee and Havana has been developed for Board approval.

CRTPA COMMITTEE ACTIONS

The CRTPA's Technical Advisory Committee and Citizen's Multimodal Advisory Committee met on November 1 and both committees voted to recommend that the CRTPA Board approve the Tallahassee to Havana Feasibility Study. The CMAC meeting included the attendance of a citizen who provided public comment expressing support for the project and its importance to Havana.

RECOMMENDED ACTION

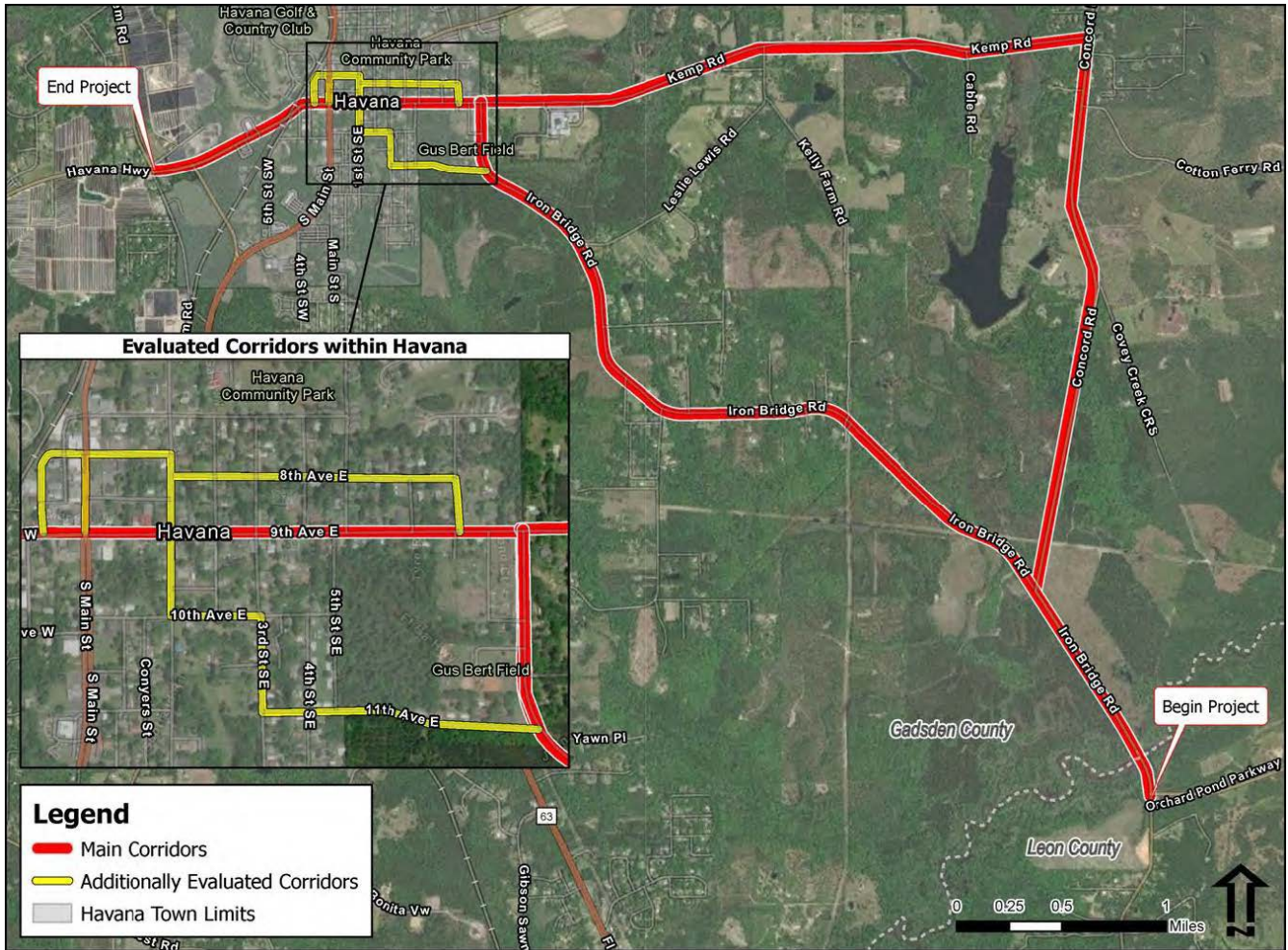
Option 1: Approve the Tallahassee to Havana Trail Feasibility Study

BACKGROUND

Initiated in the Spring of 2022, the [Tallahassee to Havana Trail Feasibility Study](#) evaluated the potentiality to construct a 10 to 12-foot multi-use trail between the Orchard Pond Parkway in Leon County and Salem Road in Gadsden County. The study was developed for the CRTPA by KHA, one of the CRTPA's general planning consultants

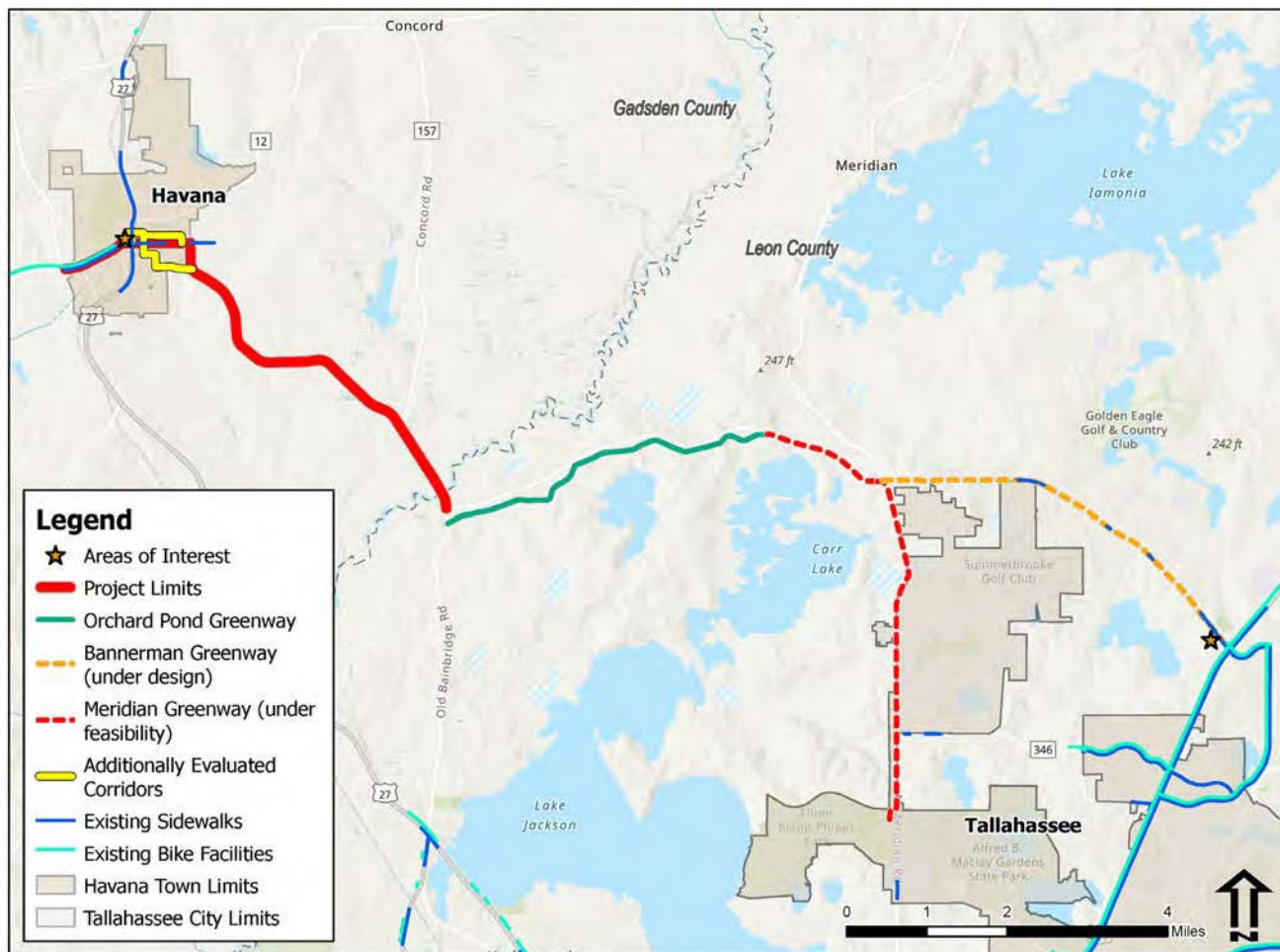
The study's evaluation of a connection between Tallahassee and Havana focused on primarily on the following main corridors (see map on following page):

- Old Bainbridge Road/Iron Bridge Road
- Concord Road
- Kemp Road
- 9th Avenue/SR 12



Within downtown Havana, local neighborhood streets (highlighted in **yellow**, above) were also evaluated to provide safe and accessible connections to downtown Havana.

Construction of a trail between Tallahassee and Havana will provide a regional connection between existing and planned multi-use trails in the Capital Region (see map, below, detailing existing and planned trail projects).

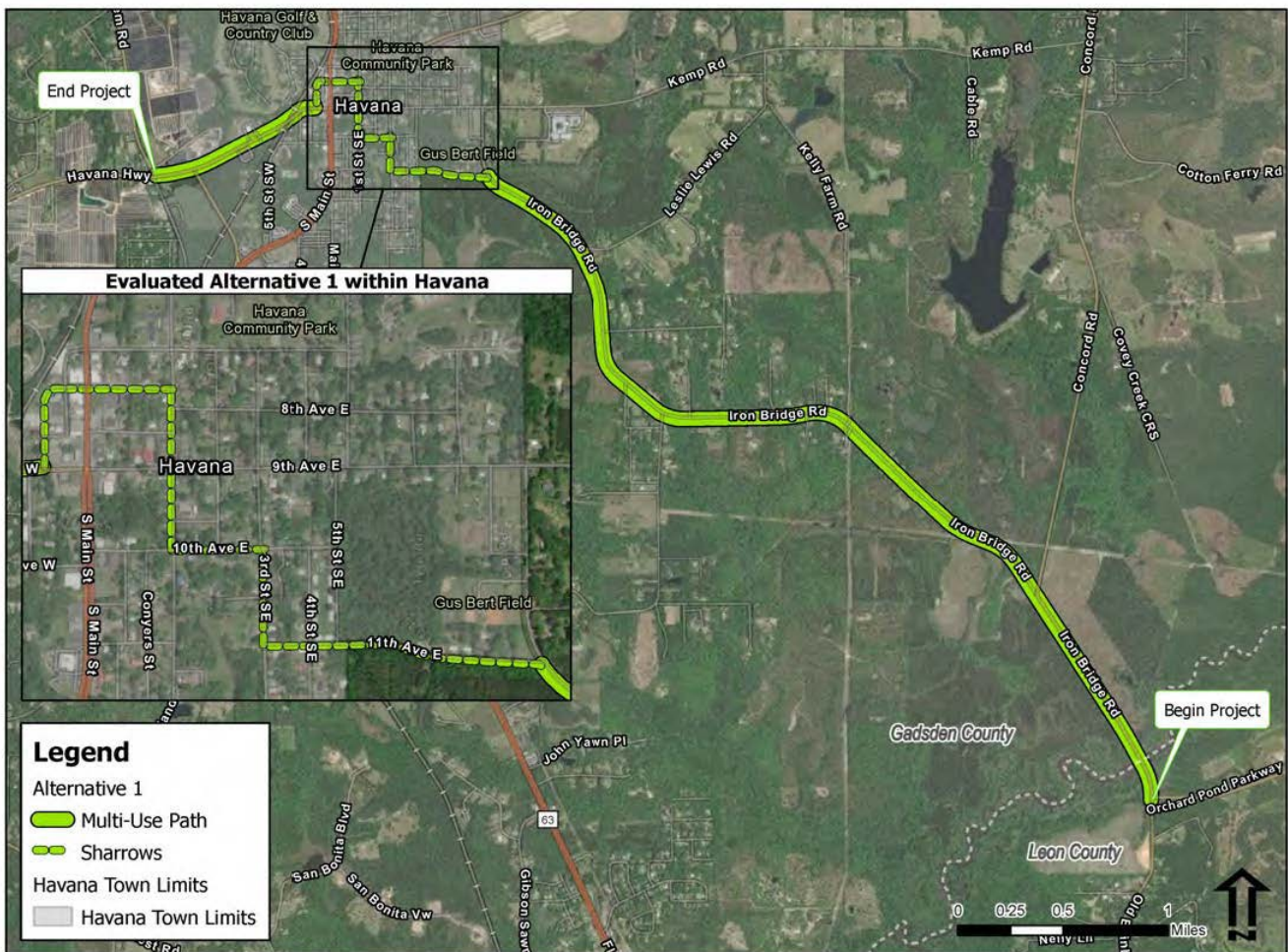


An existing conditions analysis was conducted as part of the feasibility study that included site visits as well as a desktop analysis and preliminary mapping. Data reviewed as a part of a desktop analysis included:

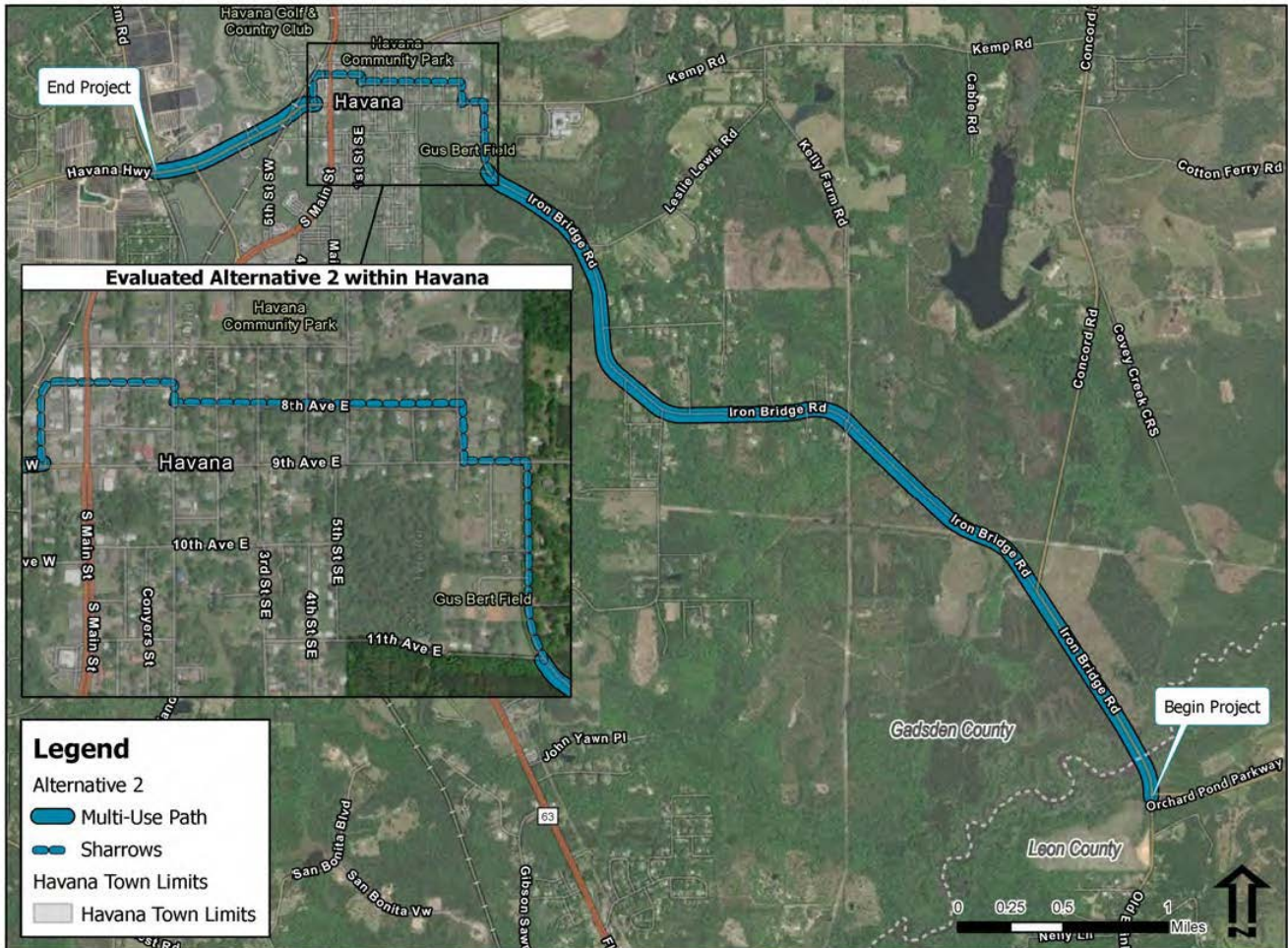
- Traffic Data (Average Annual Daily Traffic (AADT), Truck AADT, Number of Lanes, Speed Limit, Roadway Functional Classification)
- Crash Analysis
- Preliminary Right-of-Way
- Historic Structures, Resources, Bridges and Cemeteries
- Land Use
- FEMA Flood Zones
- Wetlands
- Species
- Strava Bicycle Patterns

The study identified three (3) viable alternatives (shown below) with each beginning at the south where Orchard Pond Parkway intersects with Old Bainbridge Road/Iron Bridge Road. Furthermore, all of the identified alternatives follow Iron Bridge Road until the Havana town limits with route variations occurring within Havana in order provide access to the downtown’s commercial district. The following summarizes each of the identified alternatives:

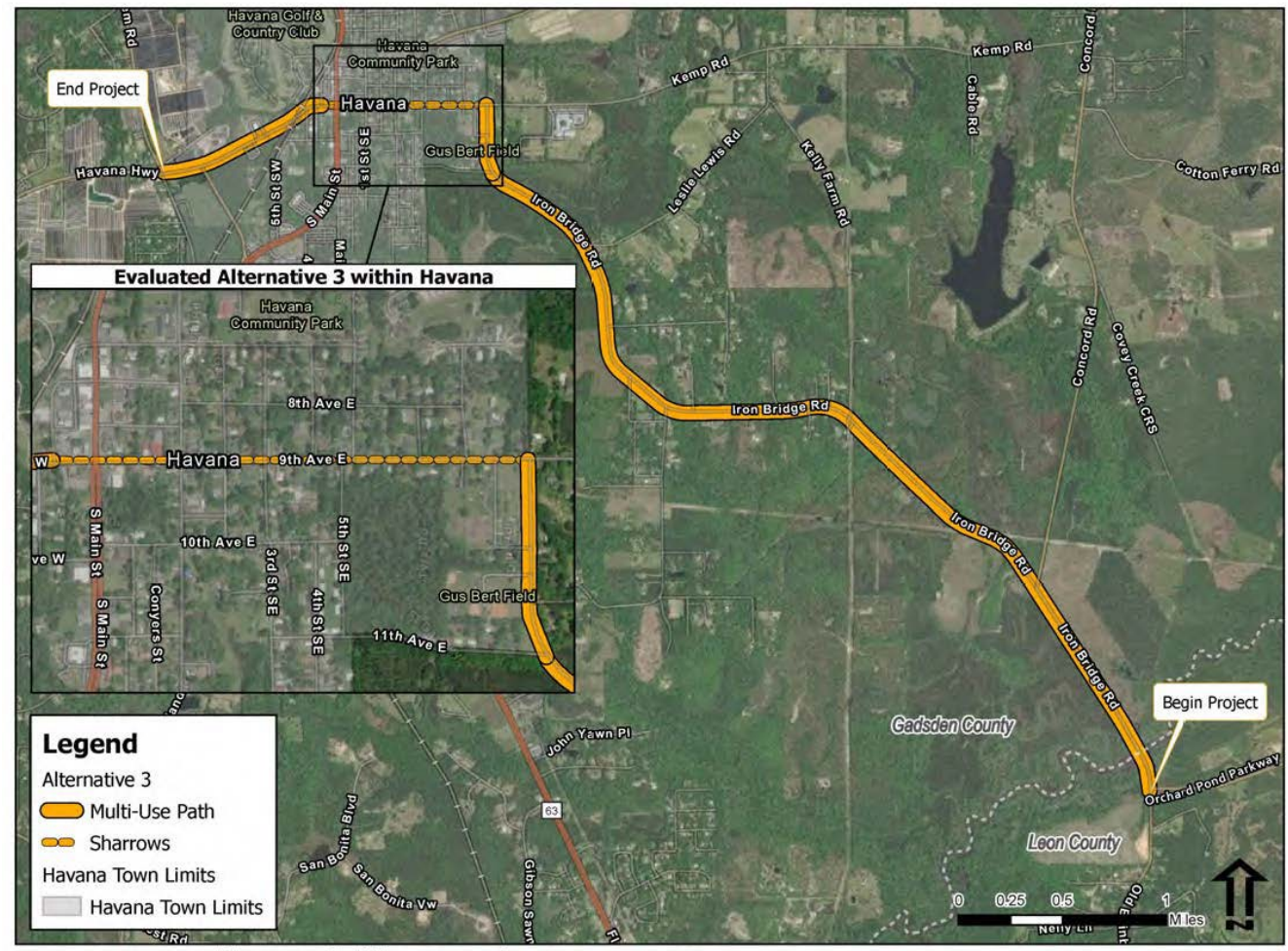
- **Alternative 1** – This route utilizes neighborhood streets largely south of 9th Avenue East and recommends that the proposed trail on Iron Bridge Road be placed on the west side.



- **Alternative 2** – This route utilizes neighborhood streets north of 9th Avenue East and recommends that the proposed trail on Iron Bridge Road be placed on the east side.



- **Alternative 3** – This route remains on 9th Avenue through downtown Havana.



Project Coordination: Due to the technical nature of the feasibility study, project coordination focused on meetings conducted with Gadsden County and Town of Havana staff. Should the project proceed forward, future meetings will incorporate opportunities for public involvement.

Next Steps/Funding Potentiality: Next steps related to the Study include the identification of funding to conduct additional project phases. To that end, every five (5) years, the Florida Greenways and Trails Opportunity Trail Map and Priority Trail Map are updated by the Florida Department of Environmental Protection (FDEP). This process is currently underway and, in the Spring of 2022, the CRTPA provided the FDEP with proposed changes to these maps in the CRTPA region for FDEP consideration. One of the recommended changes submitted by the CRTPA to the FDEP is an update to the connection between Tallahassee and Havana. Specifically, the CRTPA recommended that this connection, currently included on the “Opportunity Trail Map”, be revised to reflect its inclusion on the “Priority Trail Map”. The inclusion of the project on the FDEP Opportunity Trail Map would make

the project eligible for future SUN Trails (Shared-Use Nonmotorized (SUN) Trail) funding as projects included on the Opportunity Trail Map are also included on the SUN Trails Map for funding eligibility.

OPTIONS

Option 1: Approve the Tallahassee to Havana Trail Feasibility Study.
(Recommended)

Option 2: CRTPA Board Discretion.

ATTACHMENT

Attachment 1: [Draft Feasibility Study LINK](#)