

November 21, 2023



AGENDA ITEM 4 C

CRTPA AMENDED FISCAL YEAR 2025 – 2029 REGIONAL TRAILS PROJECT PRIORITY LIST

TYPE OF ITEM: Consent

STATEMENT OF ISSUE

The purpose of this item is to discuss and approve an amendment to the project limits for Project Priority No. 3, Tallahassee to Havana Multi-Use Trail, on the CRTPA's Adopted Fiscal Year (FY) 2025 - FY 2029 Roadway Regional Trails Project Priority List (PPL). In addition, an amendment to Project Priority No. 6 on the Regional Trails PPL is presented for approval. As proposed, Project Priority No. 6 is expanded to include two new segments, the Southwood Connector and the Tram Road Connector. **(Attachment No. 1).**

COMMITTEE ACTION

At the November 7, 2023 meetings, the Technical Advisory Committee and the Citizens Multi-Modal Advisory Committee reviewed the item and recommended the Board approve the revised project limits for Project Priority No. 3, Tallahassee to Havana Multi-Use Trail, on the Regional Trails PPL. The addition of the Southwood Connection segments will be presented at their next regularly scheduled meeting.

BACKGROUND AND ANALYSIS

Annually the CRTPA adopts Project Priority Lists (PPLs) for which the agency is seeking transportation funding. The lists provide the Florida Department of Transportation (FDOT) guidance as that agency proceeds with development of the Annual State Work Program. At the June 19, 2023 CRTPA Meeting, the Board approved the Regional Trails PPL. Subsequent to the meeting, the Florida Legislature approved additional funding for Florida Department of Transportation's Shared Use Non-Motorized Trails (SUN Trails) program. FDOT announced that applications for this supplementary SUN Trails funding would be accepted through December of 2023.

This item seeks to revise the limits for the Tallahassee to Havana Multi-Use Trail project. As amended, the western termini is SR 12 at Salem Road in Gadsden County. To the east the project limits are extended to include a segment in Leon County, with the termini at the eastern trail head parking for the Orchard Pond Greenway Leon County. **(Attachment No. 2).** This segment of the regional network is identified as a Priority Project on the Florida Department of Environmental Protections (FDEP) Greenways and Trails map as a Land Trail Priority Corridor **(Attachment No. 3).** The revised limits are consistent with the CRTPA's application for funding through the SUN Trails.

With this proposed amendment Project Priority No. 6 is expanded to include two segments, which would connect to the Southwood area. The first segment, the Tram Connector, is on Tram Road from Capital Circle SW to Four Oaks Boulevard. The second segment, the Southwood Connector, is from Tram Road and Four Oaks Boulevard to US 27, Apalachee Parkway at Sutor Road. The final segment already listed and now identified as the Apalachee Connector, is from Sutor Road to Conner Boulevard on US 27, Apalachee Parkway. (Map to be Provided)

NEXT STEPS

Following Board approval, the Regional Trail PPL reflecting the revised projects is transmitted to the FDOT District 3. An application to fund the Design phase of the Tallahassee to Havana project will be submitted by the CRTPA to the FDOT SUN Trail Program this Fall. The City of Tallahassee will be submitting SUN Trails applications for the Tram Road and Southwood Connector Segments.

RECOMMENDED ACTION

Option 1: Approve the amendment to the project limits for Project Priority No. 3, Tallahassee to Havana Multi-Use Trail, on the CRTPA's Adopted FY 2025 - FY 2029 Regional Trails Project Priority List, and the amendment to Project Priority No. 6 to include two new segments, the Tram Road Connector and the Southwood Connector. (Recommended)

Option 2: Board Discretion.

ATTACHMENTS

Attachment 1: Amended FY 2025 - FY 2029 Regional Trails PPL (*September 2023*)

Attachment 2: Project Location Map Project Priority No. 3

Attachment 3: FDEP Greenways and Trails Land Trail Priority Corridor Map Project Priority No. 3

²RMP Regional Trails

Capital Region Transportation Planning Agency

Fiscal Year 2025 - Fiscal Year 2029

Amended Project Priority List: CRTPA Meeting 11/21/23

PRIORITY NO.	PROJECT NAME AND LIMITS	¹ PHASE & FUNDING PROGRAMMED						LENGTH IN MILES	COUNTY	NEXT PROJECT PHASE	COST ESTIMATE OF PHASE	NOTES
		PHASE	FY 24	FY 25	FY 26	FY 27	FY 28					
1	US 90 Multiuse Trail	PD&E	\$1.52 M	-	-	-	-					The <u>US 90 Multi-Use Trail FS</u> was approved May 17, 2022. Design cost estimates developed once PD&E is at 60%.
	<i>Pedrick Road to Leon County Line at Lake Miccosukee</i>						² WPN 451044-2	9.7	Leon	PE	\$	
	<i>Leon County Line at Lake Miccosukee to the Monticello Trail</i>						(UNFUNDED)	10.5	Jefferson	PD&E		
2	Bloxham Cutoff Road (SR 267) Multiuse Trail	PE	\$630,000	-	-	-	-	4.78	Wakulla	CST	\$	SR 267 Multi-Use Trail FS finalized in Fall 2023. Construction cost estimates at 60% design.
	<i>Wakulla Springs State Park to the St Marks Trail</i>						WPN 410172-2					
3	Tallahassee to Havana Trail	-	-	-	-	-	-	6.5	Leon & Gadsden	PE	\$	The Tallahassee to Havana Trail FS was approved November 21, 2022.
	<i>Eastern trail head of Orchard Pond Greenway (Leon Co.) to SR 12 at Salem Road (Gadsden Co.)</i>											
4	US 90 Multiuse Trail								Gadsden	FS		Segment is a Priority Corridor on the ² FGTS Maps.
	<i>SR12 in Quincy to the Jackson County Line</i>											
5	Welaunee Greenway	CST	\$2 M	-	-	-	-	-	Leon			Per ² BPIA the <u>project</u> tentatively funded in FY 2024 for construction.
	<i>Miccosukee Greenway to Centerville Road</i>											
	Bannerman Rd Multi-use Trail	CST	\$2.9 M	-	-	-	-	-	Leon			Per ² BPIA the <u>project</u> tentatively funded in FY 2024 for construction.
	<i>Quail Commons Drive to Meridian Rd</i>											
	Orchard Pond Multi-use Trail	CST	\$1.85 M	-	-	-	-	-	1.5	Leon		
<i>Meridian to Phipps Toll Road Trailhead</i>												

¹ PROJECT PHASES

²ACRONYM



(FS) Feasibility Study
 (PD&E) Project Development & Environmental
 (PE) Design

(ROW) Right-of-Way
 (CST) Construction
 (CEI) Construction Engineering and Inspection

FDOT - Florida Department of Transportation
 FGTS - Florida Greenways and Trails System
 BPIA - Blueprint Intergovernmental Agency
 WPN - FDOT Work Program Number
 RMP - CRTPA's 2045 Regional Mobility Plan

PRIORITY NO.	PROJECT NAME AND LIMITS	¹ PHASE & FUNDING PROGRAMMED						LENGTH IN MILES	COUNTY	NEXT PROJECT PHASE	COST ESTIMATE OF PHASE	NOTES
		PHASE	FY 24	FY 25	FY 26	FY 27	FY 28					
6	Tram Road Connector Trail							0.5	Leon	CST	\$	SUN Trails Application by the COT
	Capital Circle SW to Four Oaks Blvd.											
	Southwood Connector Trail							4.5	Leon	PE/CST	\$	SUN Trails Application by the COT
	Tram Rd at Four Oaks to US 27 at Sutor Road											
	Apalachee Connector Trail	-	-	-	-	-	-	0.6	Leon	PE	\$	
Sutor Road to Conner Blvd												
7	Monticello Trail Extension FL GA Parkway (US 19)	-	-	-	-	-	-	2.7	Jefferson	PE	1.37 M	
	David Rd (CR 57A) to Martin Rd											
8	Forest Trail North Springhill Rd	-	-	-	-	-	-	5.2	Leon	FS	\$	
	Trout Pond to Lake Henrietta											
9	Nature Coast Multiuse Trail			-	-	-	-	14	Wakulla Jefferson	PD&E	\$	
	Lighthouse Rd to Taylor Co Line											

¹ PROJECT PHASES

- (FS) Feasibility Study
- (PD&E) Project Development & Environmental
- (PE) Design
- (ROW) Right-of-Way
- (CST) Construction
- (CEI) Construction Engineering and Inspection

ACRONYM

- ²FDOT - Florida Department of Transportation
- FGTS - Florida Greenways and Trails System
- COT - City of Tallahassee
- BPIA -Intergovernmental Agency
- WPN - FDOT Work Program Number
- RMP - CRTPA's 2045 Regional Mobility Plan

CRTPA Region - Land Trails Priorities Network

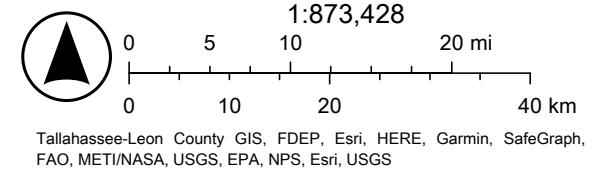
SUN Trails Application Trails in RED



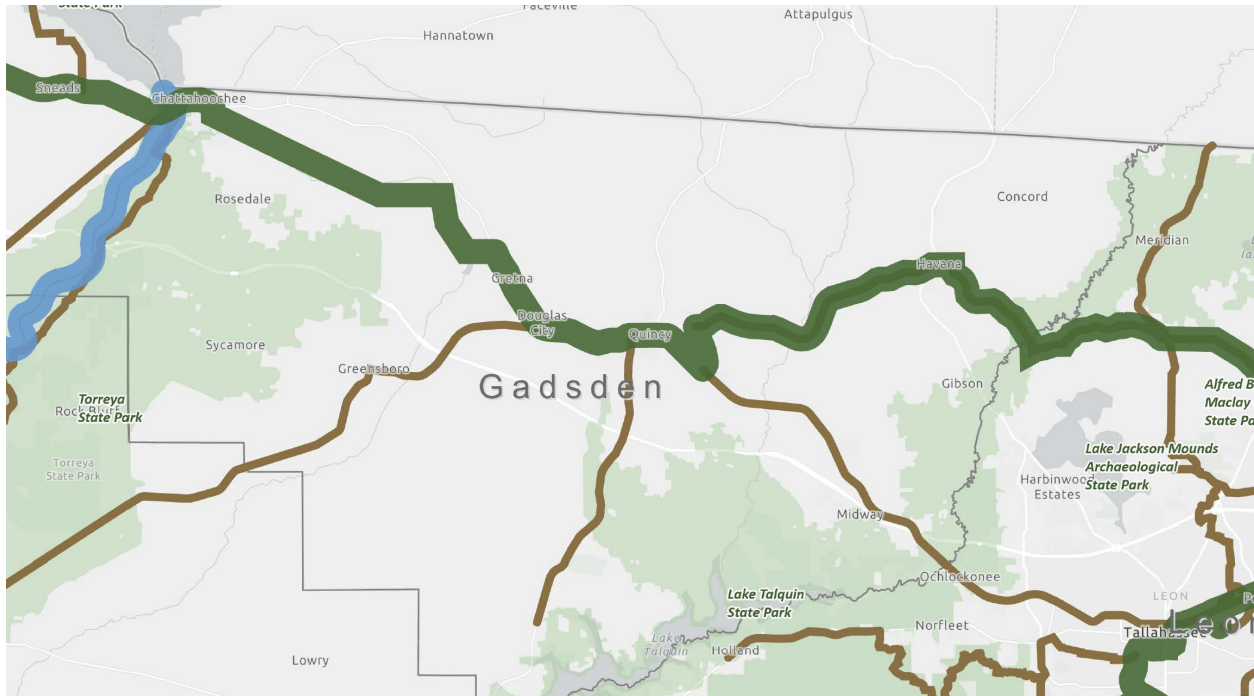
10/24/2023

Florida Greenways and Trails System - Land Trail Priorities - Land Trail Priorities

- Florida National Scenic Trail Corridor
- Land Trail Priority Corridor



Florida Greenways and Trails: Priority and Opportunity Land Trail Corridor



-  Land Trail Priority Corridors
-  Land Trail Opportunity Corridors
-  Paddling Trail Priorities
-  Florida National Scenic Trail - Priority
-  Florida Wildlife Corridor
-  Florida Counties

Lines represent five mile wide planning corridors, not specific alignments of individual trails.