



COMMITTEE AGENDA ITEM 3D

**CRTPA AMENDED FISCAL YEAR (FY) 2025 – FY 2029
REGIONAL TRAILS PROJECT PRIORITY LIST**

TYPE OF ITEM: Consent

STATEMENT OF ISSUE

The purpose of this item is to approve an amendment to the limits associated with Project Priority No. Three (Tallahassee to Havana Multi-Use Trail) on the CRTPA's Adopted FY 2025 - FY 2029 Regional Trails Project Priority List (***Attachment No. 1***).

BACKGROUND AND ANALYSIS

Annually the CRTPA adopts Project Priority Lists (PPLs) for which the agency is seeking transportation funding. The lists provide the Florida Department of Transportation (FDOT) guidance as that agency proceeds with development of the Annual State Work Program. Subsequent to the Board approval of the Regional PPL, the Florida Legislature approved additional funding for FDOT Shared Use Non-Motorized Trails (SUN Trails) program. FDOT announced that applications for this supplementary SUN Trails funding would be accepted through December of 2023.

This item seeks to revise the limits for the Tallahassee to Havana Multi-Use Trail project. As amended, the western termini is SR 12 at Salem Road in Gadsden County. To the east the project limits are extended further east in Leon County, with the termini at the eastern trail head parking for the Orchard Pond Greenway (***Attachment No. 2***). This segment of the regional network is identified as a Priority Project on the Florida Department of Environmental Protections (FDEP) Greenways and Trails map as a Land Trail Priority Corridor (***Attachment No. 3***). The revised limits are consistent with the CRTPA's application for funding through the SUN Trails. Following Board approval, the revised PPL is transmitted to FDOT District Three. Shortly thereafter the application for SUN Trails funding will be submitted for consideration to FDOT.

RECOMMENDED ACTION


Option 1: Recommend the Board adopt the amended FY 2025 – FY 2029 CRTPA Regional Trails Project Priority List.

ATTACHMENTS

Attachment 1: CRTPA Regional Trails PPL as amended (*November 2023*)

Attachment 2: Project Location and Limits Map

Attachment 3: FDEP Greenways and Trails Land Trail Priority Corridor Map

PRIORITY NO.	PROJECT NAME AND LIMITS	1PHASE & FUNDING PROGRAMMED						LENGTH IN MILES	COUNTY	NEXT PROJECT PHASE	COST ESTIMATE OF PHASE	NOTES
		PHASE	FY 24	FY 25	FY 26	FY 27	FY 28					
1	US 90 Multiuse Trail	PD&E	\$1.52 M	-	-	-	-					The <u>US 90 Multi-Use Trail FS</u> was approved May 17, 2022. Design cost estimates developed once PD&E is at 60%.
	<i>Pedrick Road to Leon County Line at Lake Miccosukee</i> 2 WPN 451044-2							9.7	Leon	PE	\$	
	<i>Leon County Line at Lake Miccosukee to the Monticello Trail</i> (UNFUNDED)							10.5	Jefferson	PD&E		
2	Bloxham Cutoff Road (SR 267) Multiuse Trail	PE	\$630,000	-	-	-	-	4.78	Wakulla	CST	\$	SR 267 Multi-Use Trail FS to be finalized in Fall 2022. Construction cost estimates at 60% design.
	<i>Wakulla Springs State Park to the St Marks Trail</i> WPN 410172-2											
3	Tallahassee to Havana Trail	-	-	-	-	-	-	6.5	Leon & Gadsden	PE	\$	The <u>Tallahassee to Havana Trail FS</u> was approved November 21, 2022.
	<i>Eastern trail head of Orchard Pond Greenway (Leon Co.) to SR 12 at Salem Road (Gadsden Co.)</i>											
4	US 90 Multiuse Trail								<u>Gadsden</u>	<u>FS</u>		<u>Segment is a Priority Corridor on the 2FGTS Maps.</u>
	<i>SR12 in Quincy to the Jackson County Line</i>											
5	Welaunee Greenway	CST	\$2 M	-	-	-	-	-	Leon			Per 2BPIA the <u>project</u> tentatively funded in FY 2024 for construction.
	<i>Miccosukee Greenway to Centerville Road</i>											
	Bannerman Rd Multi-use Trail	CST	\$2.9 M	-	-	-	-	-	Leon			Per 2BPIA the <u>project</u> tentatively funded in FY 2024 for construction.
	<i>Quail Commons Drive to Meridian Rd</i>											
	Orchard Pond Multi-use Trail	CST	\$1.85 M	-	-	-	-	1.5	Leon			Per 2BPIA the <u>project</u> tentatively funded in FY 2024 for construction.
	<i>Meridian to Phipps Toll Road Trailhead</i>											
1 PROJECT PHASES												2ACRONYM
<div><div><div><div>(FS) Feasibility Study</div><div>(PD&E) Project Development & Environmental</div><div>(PE) Design</div></div><div><div>(ROW) Right-of-Way</div><div>(CST) Construction</div><div>(CEI) Construction Engineering and Inspection</div></div><div><div>FDOT - Florida Department of Transportation</div><div>FGTS - Florida Greenways and Trails System</div><div>BPIA - Blueprint Intergovernemntal Agency</div><div>WPN - FDOT Work Program Number</div><div>RMP - CRTPA's 2045 Regional Mobility Plan</div></div></div></div>												
Page 1 of 1												

PRIORITY NO.	PROJECT NAME AND LIMITS	¹ PHASE & FUNDING PROGRAMMED						LENGTH IN MILES	COUNTY	NEXT PROJECT PHASE	COST ESTIMATE OF PHASE	NOTES
		PHASE	FY 24	FY 25	FY 26	FY 27	FY 28					
6	Apalachee Pkwy (US 27) Connector Trail	-	-	-	-	-	-	0.6	Leon	PE	\$	
	<i>Sutor Road to Conner Blvd</i>											
7	Monticello Trail Extension FL GA Parkway (US 19)	-	-	-	-	-	-	2.7	Jefferson	PE	1.37 M	
	<i>David Rd (CR 57A) to Martin Rd</i>											
8	Forest Trail North Springhill Rd	-	-	-	-	-	-	5.2	Leon	FS	\$	
	<i>Trout Pond to Lake Henrietta</i>											
9	Nature Coast Multiuse Trail			-	-	-	-	14	Wakulla Jefferson	PD&E	\$	
	<i>Lighthouse Rd to Taylor Co Line</i>											
<div><div><div><div><div><div>¹ PROJECT PHASES</div><div>(FS) Feasibility Study</div><div>(PD&E) Project Development & Environmental</div><div>(PE) Design</div></div></div><div><div><div>(ROW) Right-of-Way</div><div>(CST) Construction</div><div>(CEI) Construction Engineering and Inspection</div></div></div></div><div><div>ACRONYM</div><div>²FDOT - Florida Department of Transportation</div><div>FGTS - Florida Greenways and Trails System</div><div>BPIA -Intergovernmental Agency</div><div>WPN - FDOT Work Program Number</div><div>RMP - CRTPA's 2045 Regional Mobility Plan</div></div></div></div>												

CRTPA Region - Land Trails Priorities Network

ATTACHMENT 2

SUN Trails Application Trails in **RED**

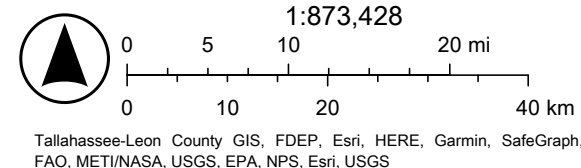


10/24/2023

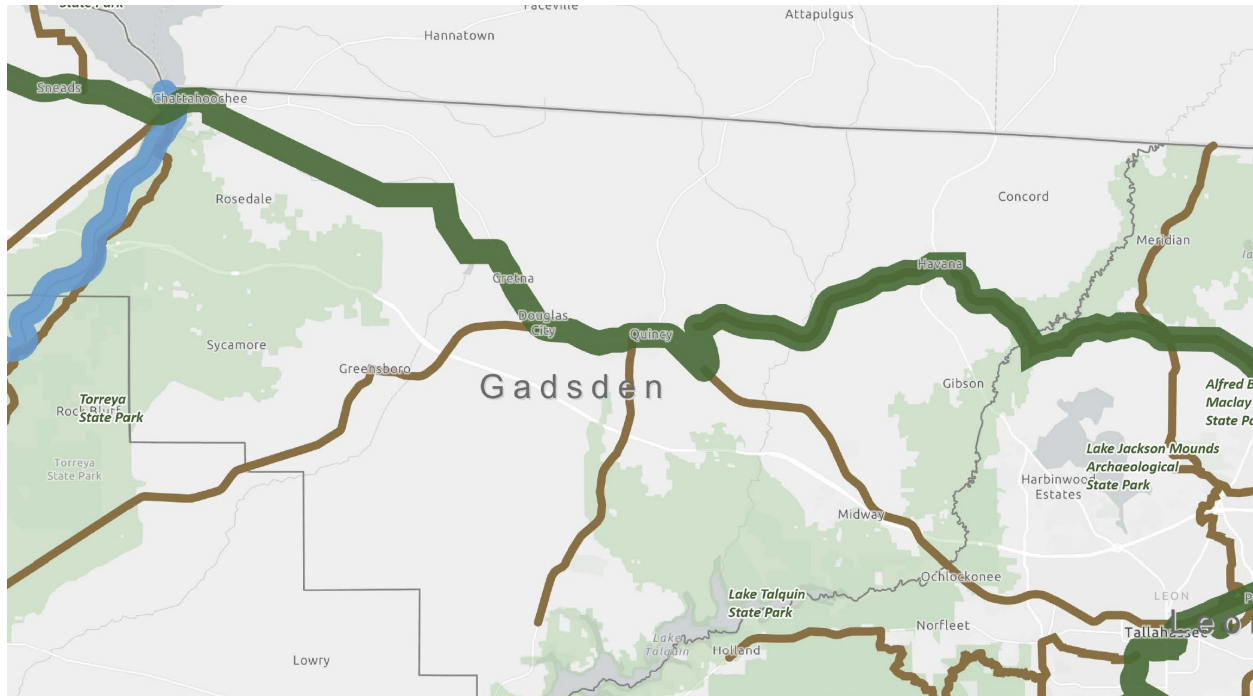
Florida Greenways and Trails System - Land Trail Priorities - Land Trail Priorities

Florida National Scenic Trail Corridor

Land Trail Priority Corridor



Florida Greenways and Trails: Priority and Opportunity Land Trail Corridor



-  Land Trail Priority Corridors
-  Land Trail Opportunity Corridors
-  Paddling Trail Priorities
-  Florida National Scenic Trail - Priority
-  Florida Wildlife Corridor
-  Florida Counties

Lines represent five mile wide planning corridors, not specific alignments of individual trails.