

October 19, 2020



## AGENDA ITEM 6 D

### US 90 MULTI-USE TRAIL FEASIBILITY STUDY

TYPE OF ITEM: Action

#### **STATEMENT OF ISSUE**

This item provides information on the CRTPA's US 90 Multi-Use Trail Feasibility Study. The study was initiated in late 2019 and is being developed by the CRTPA's general planning consultant, Kimley Horne and Associates (KHA), in order to evaluate the feasibility of constructing a multi-use trail on US 90 between Tallahassee and Monticello.

More information on the project may be found on the CRTPA's project page (<http://crtpa.org/us-90-trail-feasibility-study/>).

#### **ATTACHMENT**

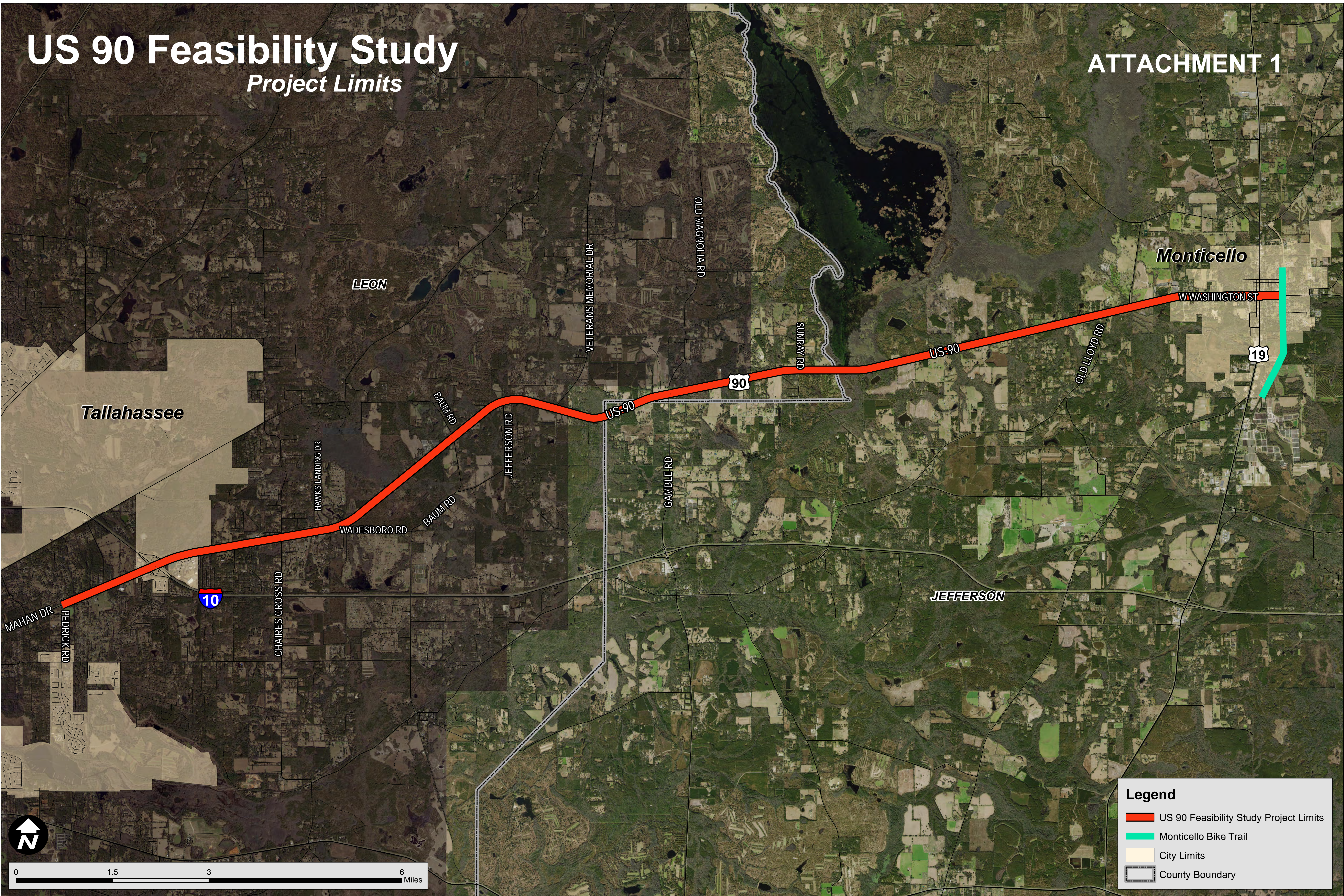
Attachment 1: Project Limits Map



# US 90 Feasibility Study

*Project Limits*

## ATTACHMENT 1



### Legend

- US 90 Feasibility Study Project Limits
- Monticello Bike Trail
- City Limits
- County Boundary