



VIRTUAL PUBLIC MEETING MAY 31, 2023

The Meeting Will Begin Shortly



Capital Region Transportation Planning Agency

Virtual Public Meeting - May 31, 2023

**Fiscal Year 2024 - Fiscal Year 2028
Transportation Improvement Program (TIP)
&
Fiscal Year 2025 - Fiscal Year 2029
Project Priority Lists (PPLs)**

A summary of comments and discussion is included in Appendix G of the Fiscal Year 2024 - Fiscal Year 2028 Transportation Improvement Program (TIP).



Nondiscrimination Statement

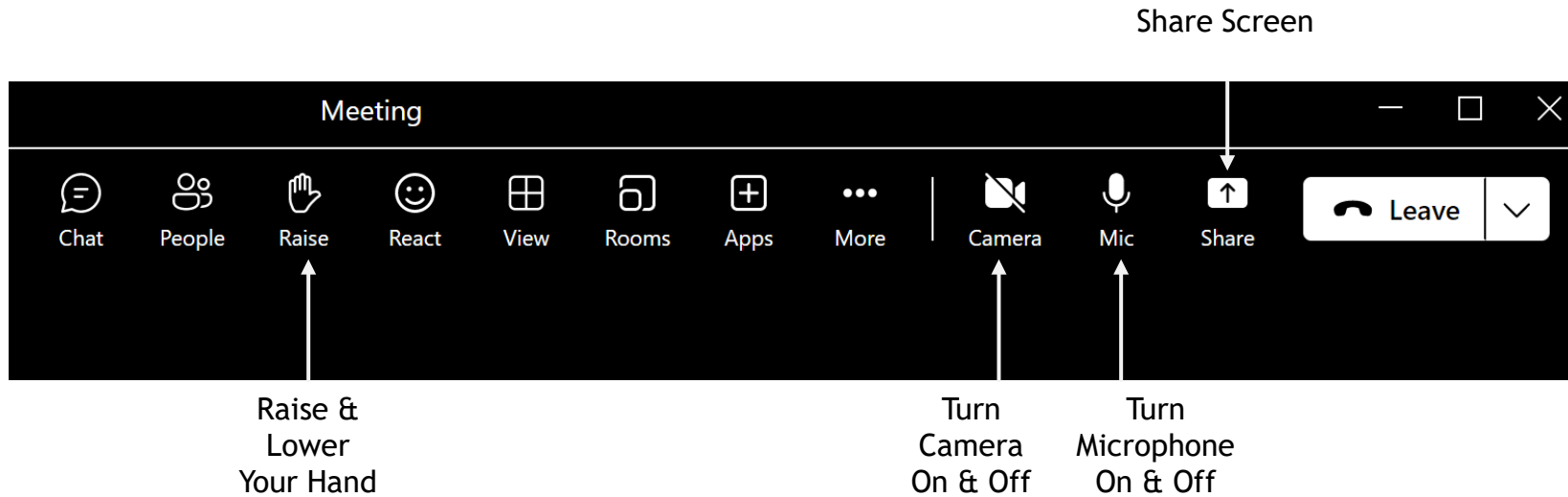
“Public Participation is solicited without regard to race, color, national origin, age, sex, religion, disability, or family status. Persons who require special accommodations under the Americans With Disabilities Act, or persons who require translation services (free of charge) should contact the CRTPA Title VI Coordinator, Suzanne Lex, four days in advance of the CRTPA meeting at 850-891-8627 (Suzanne.Lex@crtpa.org”) and for the hearing impaired, telephone 711 or 800-955-8771 (TDY).”

Declaración de no Discriminación

“La participación pública se solicita sin distinción de raza, color, nacionalidad, edad, sexo, religión, discapacidad o estado familiar. Las personas que requieran adaptaciones especiales en virtud de la Ley de Americanos con Discapacidades, o las personas que requieran servicios de traducción (sin cargo) deben comunicarse con Suzanne Lex, CRTPA Coordinadora del Título VI, al 850-891-8627 (Suzanne.lex@crtpa.org) y para las personas con discapacidad auditiva, teléfono 711 o 800-955-8771 (TDY) cuatro días antes de la CRTPA reunión.



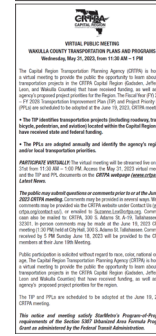
Housekeeping



- Comment or question, please raise your hand.
- Video is optional for participants. We are glad you are with us today.
- Informal meeting - dialogue encouraged.



Meeting Outreach



Public Engagement

- ✓ Noticed in the local newspaper for each county.
- ✓ Emailed to interested parties' contact list and posted on website.
- ✓ Distributed to local government partners, CRTPA committees and Board.

IN-PERSON MEETING: June 1st from 11:30 AM to 1:30 - Havana, FL
Hazel J Baker Community Center, 128 7th Avenue East

June Committee & Board Meetings

- ✓ June 6, 2023 - Technical Advisory Meeting 9:00 am
- ✓ June 6, 2023 - Citizens Multi-modal Advisory Meeting 11:30 am
- ✓ June 19, 2023 - CRTPA Board Meeting 1:30 pm

All meetings are held at City Hall, 300 S. Adams St.



Public Participation

- Comments may also be provided via the CRTPA Website.

Contact Us Online: crtpa.org/Contact-Us

Any comments or questions please contact Suzanne Lex.

Email: Suzanne.Lex@crtpa.org

Telephone: (850) 891-8627

- Comments may also be provided via the CRTPA Website.

Contact Us Online: crtpa.org/Contact-Us

- For additional information on the CRTPA, and the TIP and PPLs.

Visit: www.crtpa.org/What's New



Purpose of the Public Meeting

The purpose of this meeting is to:

- ✓ Educate Who is the CRTPA? Why a regional planning agency?
- ✓ Inform What & where are the transportation projects & priorities.
- ✓ Engage Staff encourages questions and comments.
- ✓ Include Participants comments are incorporated into the TIP & are provided to the CRTPA Board.



The CRTPA is an MPO

- MPOs are federally mandated transportation planning organizations comprised of representatives from local governments and transportation authorities.
- CRTPA serves as the Capital Region's metropolitan planning organization (MPO).
- CRTPA's role is to develop and maintain the required transportation plans for a metropolitan area in order.
- CRTPA is to ensure Federal funds support local priorities.



Capital Region - CRTPA's Planning Area

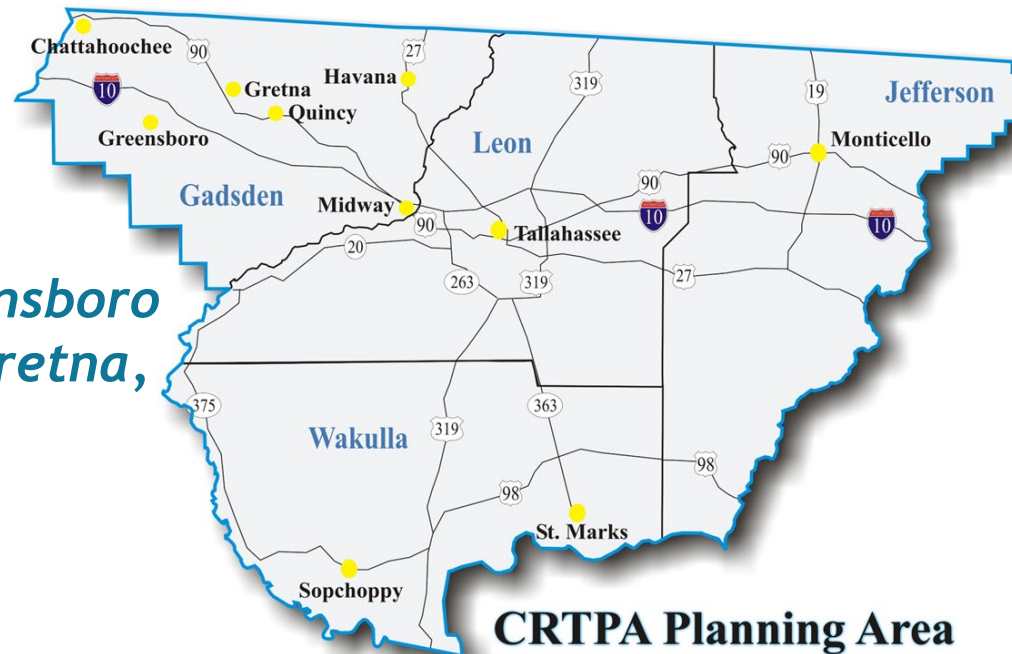
The four-county Capital Region is the CRTPA's Metropolitan [Transportation] Planning Area

JEFFERSON COUNTY
City of Monticello

GADSDEN COUNTY
Towns of Havana and Greensboro
Cities of Chattahoochee, Gretna, Midway & Quincy

LEON COUNTY
City of Tallahassee

WAKULLA COUNTY
Cities of Sopchoppy and St. Mark's





Project Management



*FY 2024 - FY 2028
Transportation Improvement
Program*

*FY 2025 - FY 2029
Project Priority Lists*



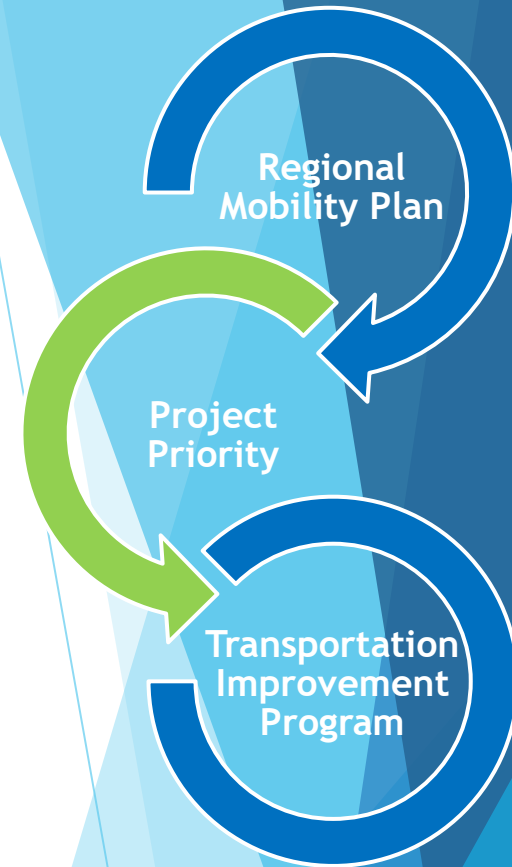
Project Development

Projects are identified in the CRTPA's transportation plans, partner agency and local government plans, and by member governments and transportation partners.

- CRTPA Connections 2045 Regional Mobility Plan
- CRTPA Congestion Management Process Plan
- StarMetro's Transit Development Plan
- Tallahassee International Airport's Master Plan
- County and City Comprehensive Plans/Mobility Plans

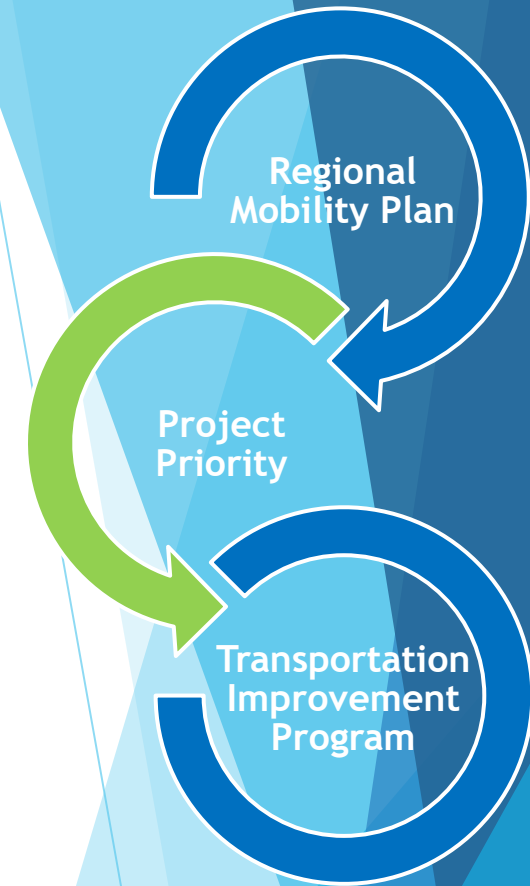
Through a competitive project search.

- Transportation Alternatives Program



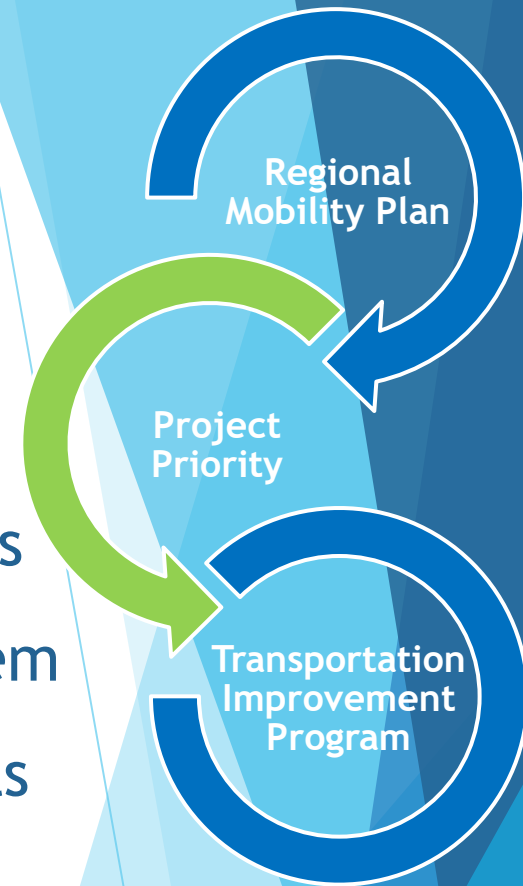
Project Priority Lists

- Developed and approved annually
- Are developed for all modes of transportation
- Long-term needs are identified in the Regional Mobility Plan
- Establishes project priorities for the Capital Region
- Identify projects or projects phases that are not fully funded
- When funding becomes available, the project is programmed in the FDOT Five-year Work Program



Transportation Improvement Program

- Covers a five-year funding period
- Assigns available funding to specific projects
- Allocates resources among capital, planning and operating needs
- Includes a schedule of improvements to the transportation system
- Consist of federal, state & locally funded transportation projects
- Covers all modes of transportation in the Capital Region
- Consistent with Connections 2045 Regional Mobility Plan
- Consistent with the Florida Transportation Plan



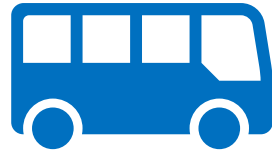
TIP and PPL Projects by Type



Aviation



Bike & Ped



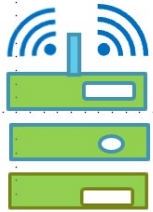
Transit



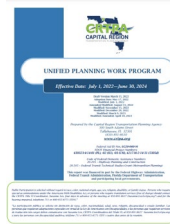
Roadways



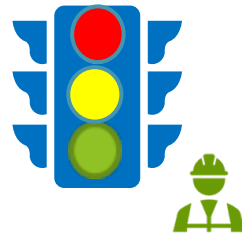
Regional
Trails



Intelligent
Transportation
System



Planning
Program



Systems
Management &
Safety



Bridge



Resurfacing

Phases

Phases and Types of Projects

- (FS) Feasibility Study
- (PD&E) Project Development & Environmental Study
- (PE) Design
- (ROW) Right-of-Way
- (CST) Construction
- (CEI) Construction Engineering and Inspection

Types

- Operational
- Capital Investments
- Safety
- Planning
- Maintenance



CRTPA FY 2024 - FY 2028 Transportation Improvement Program



TIP BASICS

What is the CRTPA?

The Capital Region Transportation Planning Agency (CRTPA) is the region's metropolitan planning organization (MPO). An MPO is a federally mandated local transportation policy-making organization that is comprised of representatives from local government and transportation agencies. The CRTPA coordinates the regional transportation planning process and includes all of Gadsden, Jefferson, Leon and Wakulla counties. Voting representatives from the following local governments serve on the CRTPA Board:

- Leon County
- City of Tallahassee
- Leon County School Board
- Gadsden County
- City of Chattahoochee
- Town of Greensboro
- City of Gretna
- Town of Havana
- City of Midway
- City of Quincy
- Jefferson County
- City of Monticello
- Wakulla County
- City of Sopchoppy
- City of St. Marks

What is the TIP?

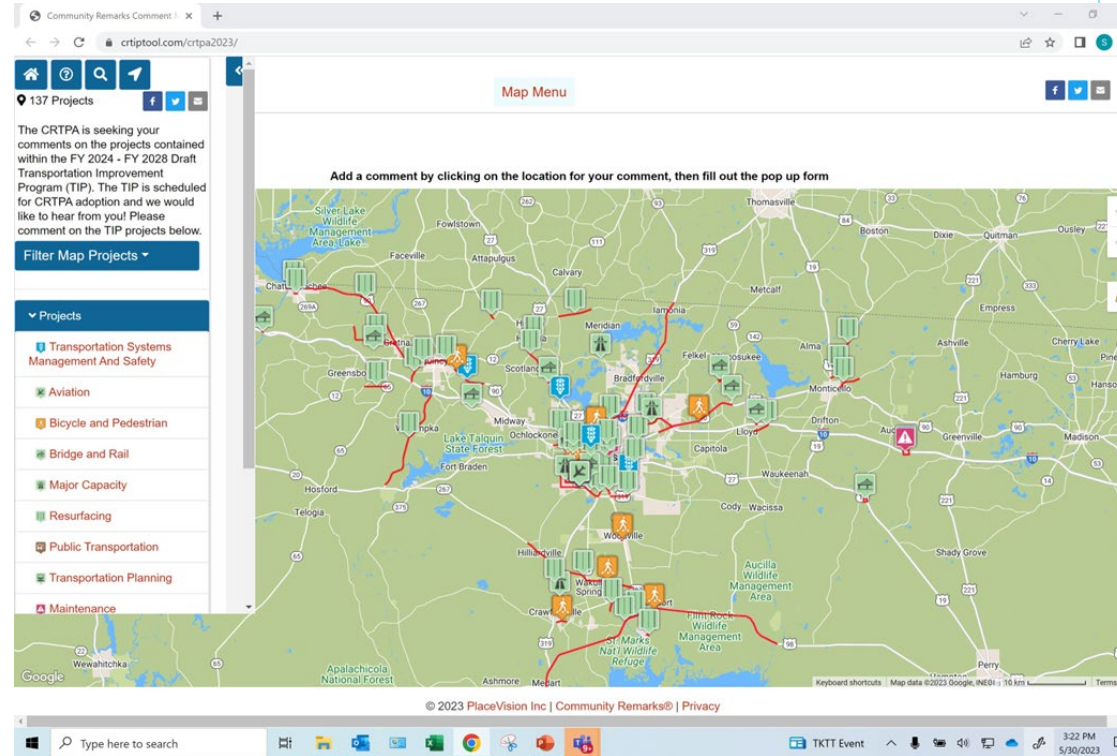
The Transportation Improvement Program (TIP) is a multi-year document reflecting transportation projects programmed for federal, state, and local funding within the Capital Region Transportation Planning Agency (CRTPA) area (Gadsden, Jefferson, Leon and Wakulla counties).

Why does the CRTPA develop a TIP?

In order to use federal funds for a transportation improvement, the US Department of Transportation requires that the improvement be identified within an adopted TIP. Specifically, 23 U.S.C. 134(j), 23 CFR 450 and subsection 339.175(f), F.S. require MPOs to develop a TIP.

Page 29 of 298

Page 1 of 298



INTERACTIVE TIP

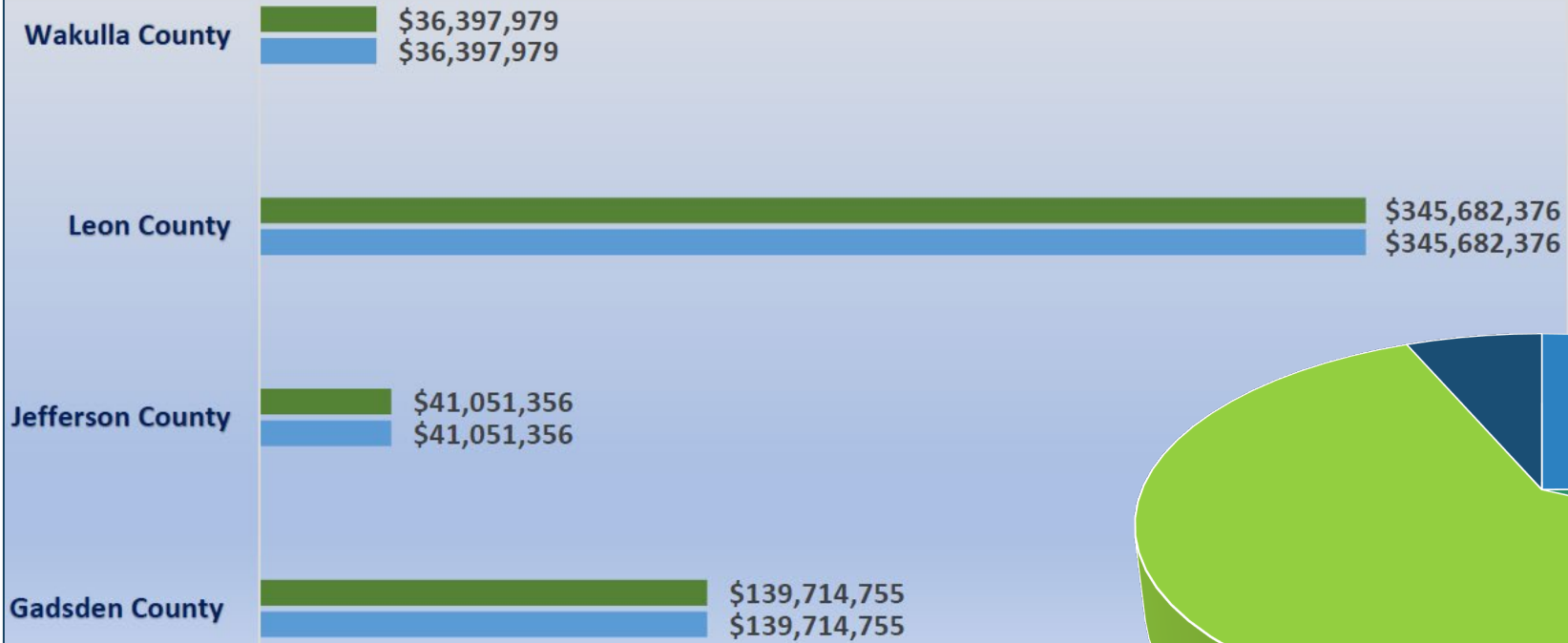
www.crtiptool.com/crtpa2023



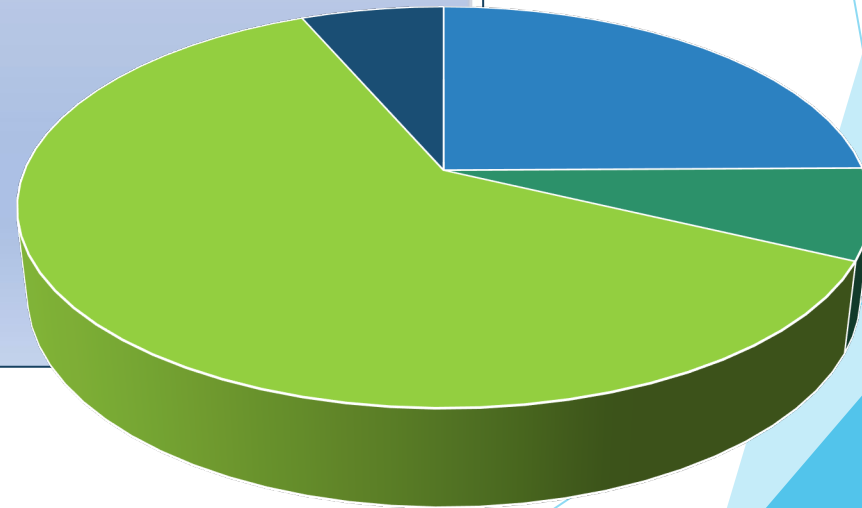
Fiscal Constraint by County

Available Funding by County Versus Project Cost

■ Project Cost ■ Available Funding

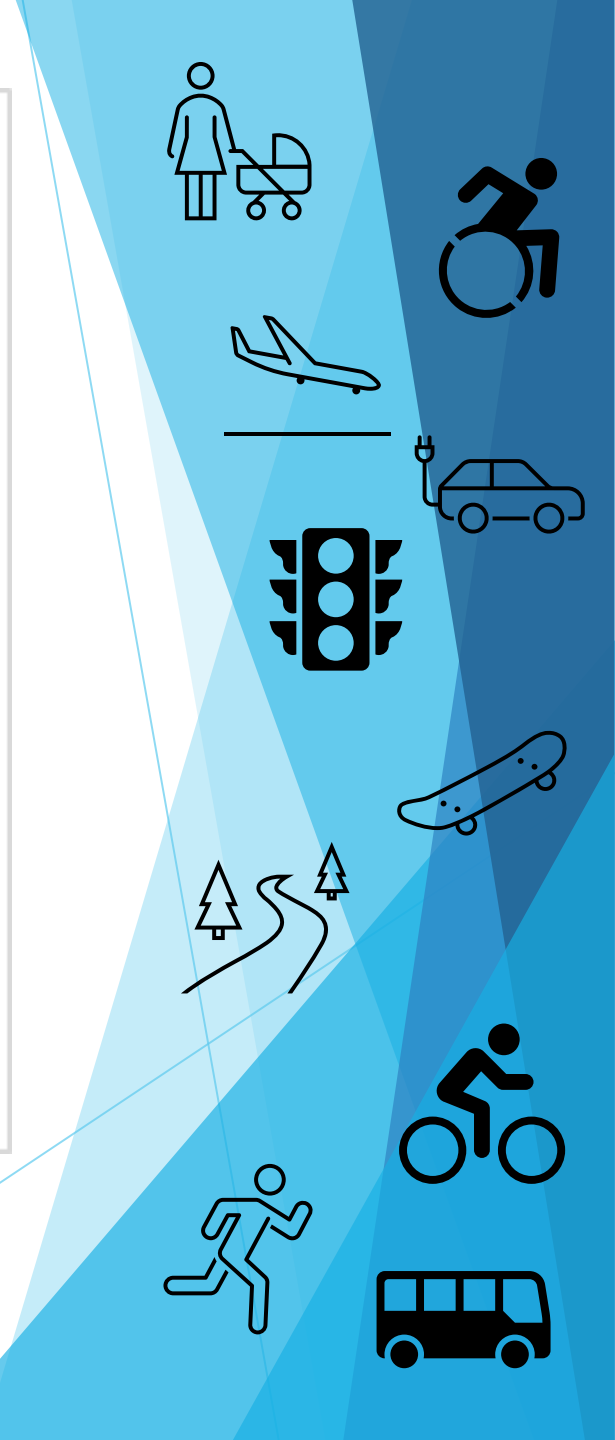
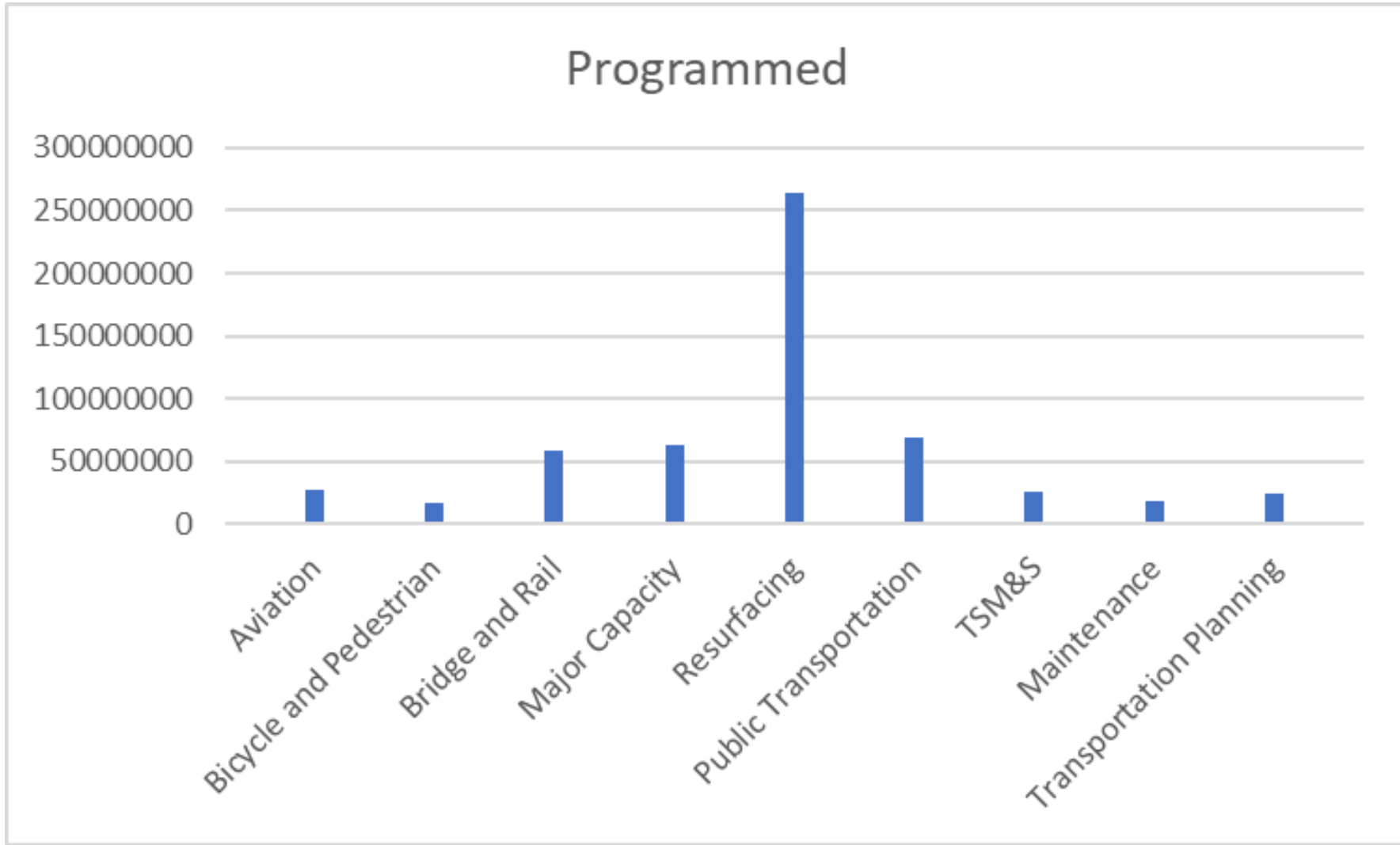


TOTAL PROGRAMMED
\$562,846,466



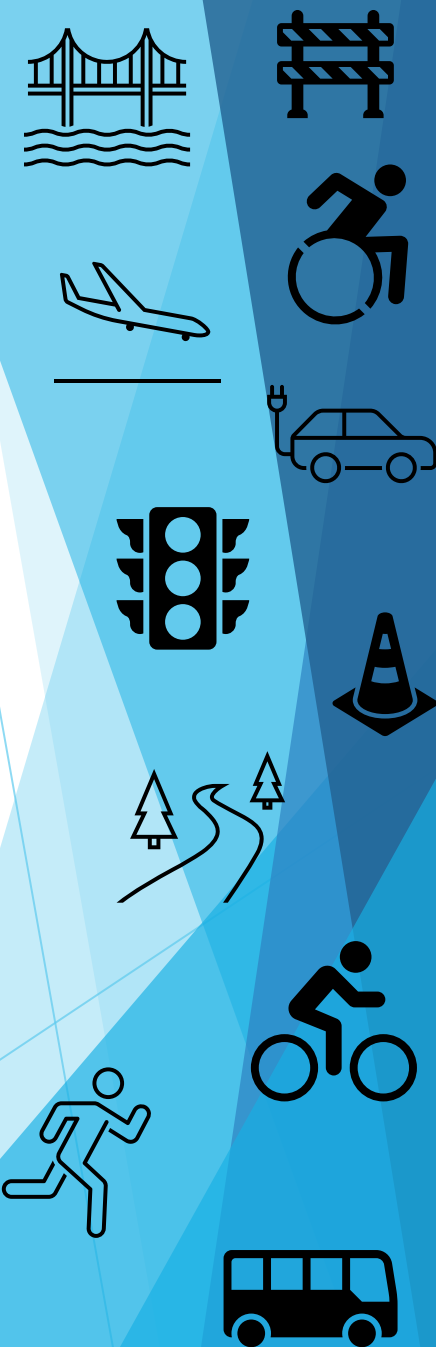
■ Gadsden ■ Jefferson ■ Leon ■ Wakulla

Programmed



Programmed Funding by Category

Category	Programmed
Aviation	\$27,350,000
Bicycle and Pedestrian	\$16,401,977
Bridge and Rail	\$58,081,631
Major Capacity	\$62,157,485
Resurfacing	\$264,390,124
Public Transportation	\$68,050,759
TSM&S	\$24,898,297
Maintenance	\$17,592,097
Transportation Planning	\$23,924,096





Aviation Projects

Section A Aviation

Capacity

- ✓ Terminal and Hanger Improvements
- ✓ Air Carrier Apron

Preservation

- ✓ Revenue/Runway Repairs
- ✓ Traffic Circulation & Parking

Operational

- ✓ Terminal Building Improvements

Safety

- ✓ Fencing and Lighting





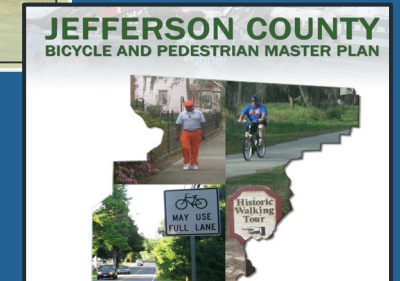
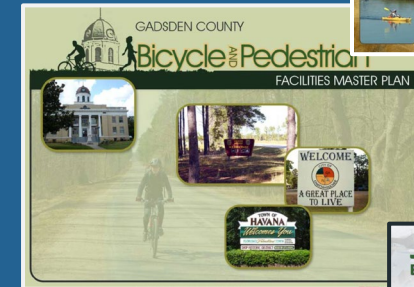
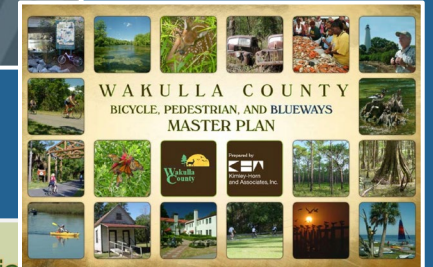
Bike-Ped Projects

Sidewalks

- ✓ Safe Routes to School Projects
- ✓ N Monroe Street Sidewalk
- ✓ US 90 Quincy Sidewalk to Health Center

Trails - Regional & SUN Trail Network

- ✓ US90 Multi-Use Trail
- ✓ Coastal Trail Bloxham Cutoff
- ✓ Dr. MLK JR Memorial Road





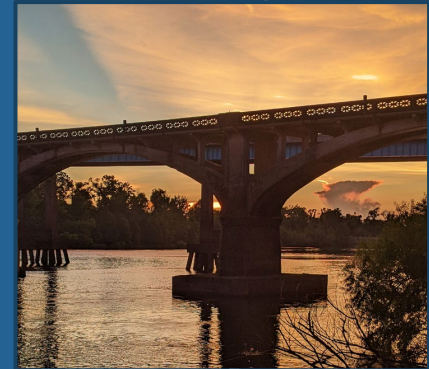
Bridge Projects

Replacement

- ✓ CR 257A over Aucilla River Bridge
- ✓ Miccosukee Road Bridge over Unnamed Branch
- ✓ Veterans Memorial Drive Bridge(CR 59)
- ✓ CR 259 over SCL Railroad Bridge
- ✓ CR372/Surf Road Bridge over Otter Creek Rise
- ✓ Springhill Road over Munson Slough
- ✓ CR 372 Surf Road Bridge
- ✓ CR 268/High Bridge Rd over Little River
- ✓ Hanna Mill Pond Bridge

Maintenance

- ✓ I-10 Bridge - Repair & Rehab
- ✓ SR 20/Crooked Road - Repair & Rehab
- ✓ US 27 Bridge over Ochlockonee River & Painting Repair & Rehab
- ✓ US 319 Sopchoppy Highway

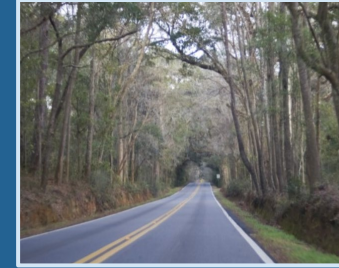




Roadway Projects

Capacity and Multi-Modal

- ✓ Capital Circle SW
Crawfordville Rd to Springhill Rd (ROW)
- ✓ Capital Circle SW
Springhill Rd to Orange Avenue (CST)
- ✓ Northeast Gateway (CST)
Welaunee Blvd Phase I
- ✓ US 319/Crawfordville Rd (PE)
Wakulla Arran Road to East Ivan





Transit Projects

Transportation Assistance for Gadsden & Jefferson

- ✓ Big Bend Transit Commuter and Gadsden Express
- ✓ Big Bend Transit Service Demonstration
- ✓ Big Bend Transit Commuter Transit Assistance

Transportation Assistance Rural and Urban Leon

- ✓ StarMetro - Flex Neighborhood Circulator
- ✓ StarMetro Section 5307 Operating for Fixed Route
- ✓ StarMetro Section 5311 Transit Non-Urbanized Area
- ✓ StarMetro Section 5307 Capital for Fixed Route
- ✓ StarMetro Section 5339 Capital Assistance
- ✓ StarMetro Section 5310 Capital & Operating for Fixed Route

Transportation Assistance for Wakulla

- ✓ Wakulla County Section 5311 Transit Non-Urbanized Area

Commuter Assistance for the Capital Region

- ✓ Apalachee Regional Planning Council Commuter Assistance

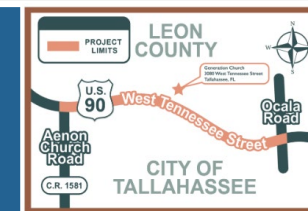
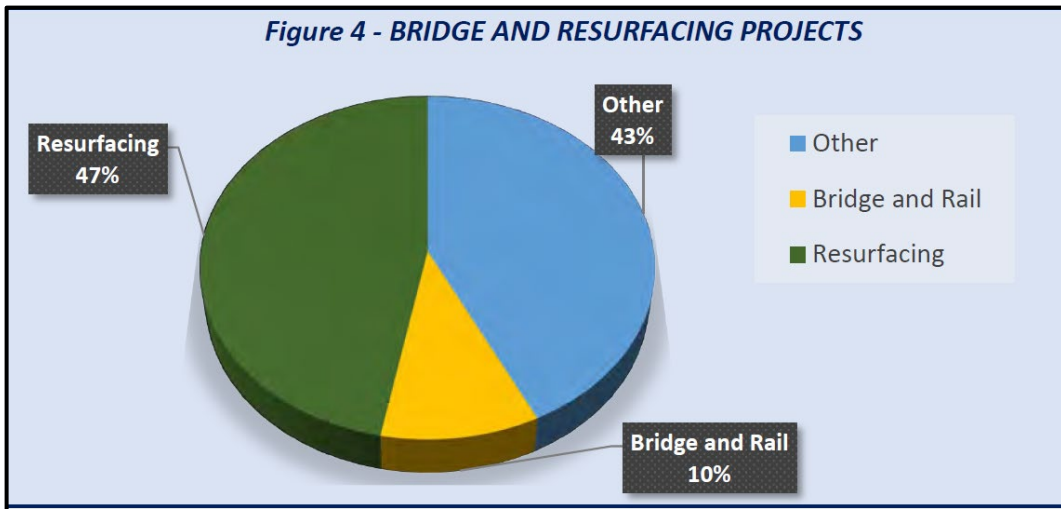




Resurfacing Projects

Resurfacing

- ✓ Thirty-nine (39) resurfacing projects in the current TIP
- ✓ Reflects and investment of \$264.4 million
- ✓ Investment in system preservation/maintenance
- ✓ Interstate and National Highway System
- ✓ Local county projects funded by FDOT small county assistance





Transportation Systems Management and Safety Projects

Section G

Transportation Systems Management and Safety

Section H

Maintenance

Intelligent Transportation System

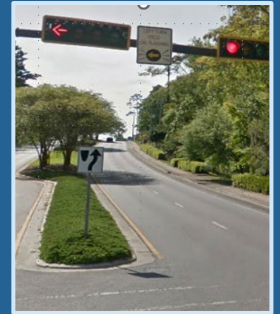
- ✓ Fiber upgrades installed Capital Circle SW
- ✓ Tallahassee Regional Transportation Management Center

Safety Improvements - Corridor and Intersections

- ✓ Old Bainbridge Road at SR263/Capital Circle (Intersection)
- ✓ Blainstone and New Village (Intersection)
- ✓ Pensacola Street from Appleyard Drive to Stadium Drive
- ✓ U90 W Tennessee Street from Caliark Street to Brevard Street (Intersection)

Maintenance

- ✓ Traffic signals on state roads in all four counties.





Project Management



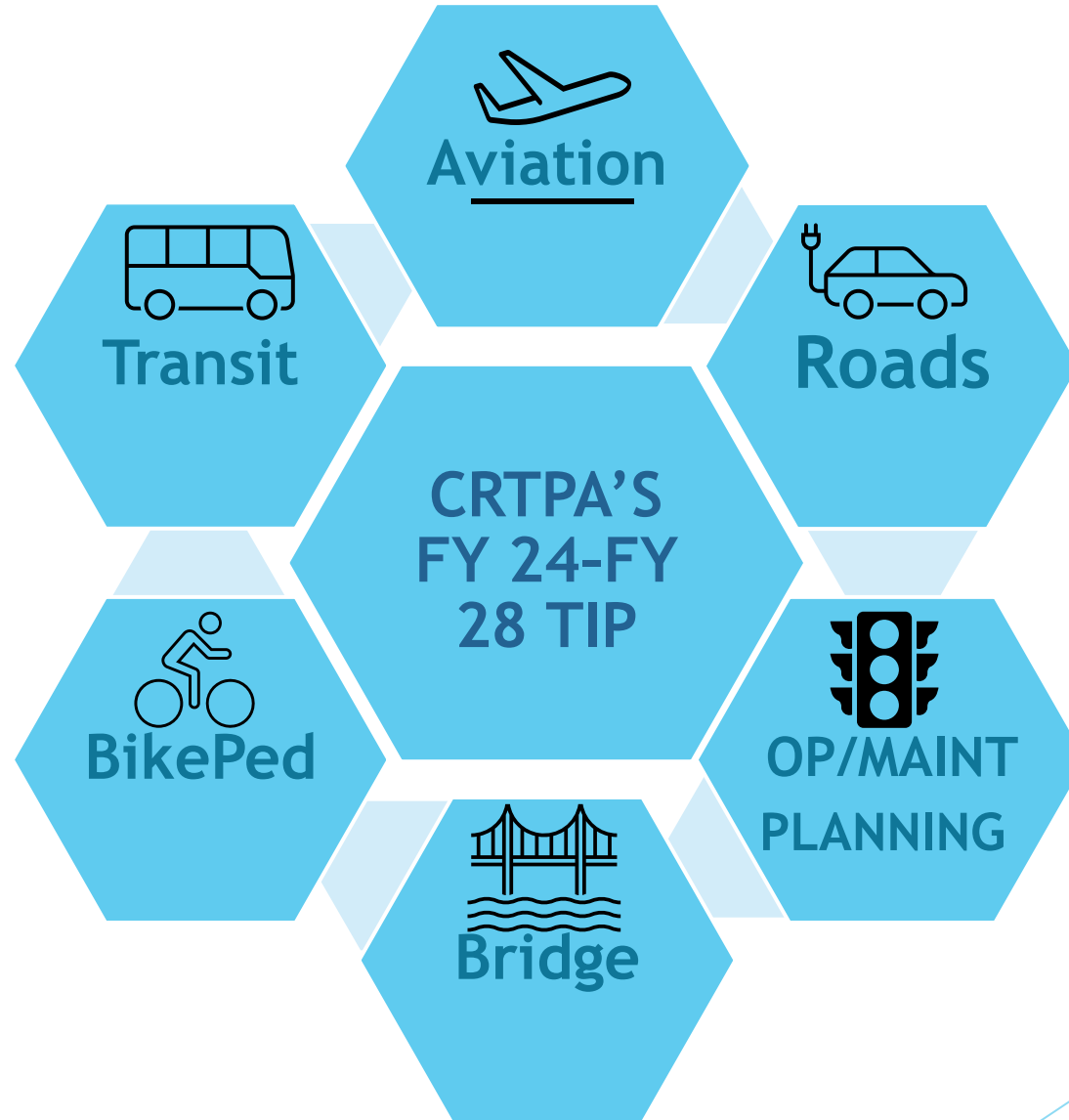
*FY 2024 - FY 2028
Transportation Improvement
Program*

*FY 2025 - FY 2029
Project Priority Lists*



TIP Projects by Type

- Multi-Modal
- Operational
- Maintenance
- Planning



Project Priority Lists

➤ Why does the CRTPA adopted Project Priority Lists?

“Each M.P.O. annually shall prepare a list of project priorities and shall submit the list to the appropriate district of the department by October 1 of each year...”

(Chapter 339.175 (8)(b), Florida Statutes)

➤ What type of projects are included on the lists??

Roadway, Bicycle and Pedestrian, Operational, Aviation, Trails, Transportation Alternatives and Safety

➤ How are the projects prioritized?

Some PPLs maintain the prioritized listing of projects as was established in development of adopted plans using adopted criteria; others are prioritized using CRTPA adopted criteria. Ultimately, the priorities are decided by the CRTPA Board



PRIORITY NO.	PROJECT	1PHASE & FUNDING PROGRAMMED					LENGTH	IMPROV.	NEXT PHASE	COST ESTIMATE	FUTURE PHASE	COST ESTIMATE
		PHASE	FY 24	FY 25	FY 26	FY 27						
1	Woodville Highway (SR 363)							Add 2 lanes/multi-modal				
	Capital Circle SE to Gaile Ave	-	-	-	-	-	1.49		ROW	\$5.99 M	CST/CEI	\$31.01 M
	Gaile Ave to Paul Russell Rd	-	-	-	-	-	1.48		ROW	\$6.48 M	CST/CEI	\$15.36 M
		FPN: 424009-4,-5					To date \$2.29 M expended on ROW.		Cost to complete the project - \$58,750,000			
2	Capital Circle SW (SR 263)							Add 4 lanes/multi-modal				
	Crawfordville Rd to Springhill Rd	ROW	\$3.25 M	\$2.77 M	-	-	2.34		ROW	\$8.63 M	CST/CEI	\$57.2 M
		FPN: 219722-5					To date \$20.73 M expended or programmed on ROW.		Cost to complete the project - \$65.8 M			
3	Crawfordville Road (US 319)							Add 2 lanes/multi-modal				
	Wakulla Arran Rd to East Ivan Rd	PE	\$1.43 M	-	-	-	2.2		ROW	\$38.23 M	CST/CEI	\$40.08 M
		FPN: 450896-2					To date \$2.29 M expended on ROW.		Cost to complete the project - \$78.3 M			
4	Orange Avenue (SR 371)							Add 2 lanes/multi-modal				
	Cypress Lake St to Monroe St	-	-	-	-	-	1.7		ROW	\$34.93 M	CST/CEI	\$53.78 M
	S Lake Bradford Rd to Cypress Lake	-	-	-	-	-	1.2		ROW	\$16.6 M	CST/CEI	\$20.9 M
	CCSW to S Lake Bradford Rd	-	-	-	-	-	1.6	Multi-modal	ROW	\$12.97 M	CST/CEI	\$21.7 M
		FPN: 437902-4,-3					To date \$2.29 M expended on ROW.		Cost to complete the project - \$160.8 M			
5	Crawfordville Road (US 319)							Add 2 lanes/multi-modal				
	LL Wallace Rd to S of SR61 Int.	-	-	-	-	-	1.61		ROW	\$1.61 M	CST/CEI	\$22.41 M
	Wakulla Co Line to LL Wallace Rd	-	-	-	-	-	1.69		ROW	\$5 M	CST/CEI	\$40.01 M
		FPN: 219881-4,-1					To date \$4.4 M expended on design.		Cost to complete the project - \$69 M			
6	Mahan Drive/Capital Circle NE Intersection							Intersection rebuild				
		-	-	-	-	-	0.2		PD&E	\$1.8 M	PE	-
Project cost estimates developed once PD&E at 60% completion.												
		1Phases:		Feasibility Study (FS)		Project Development & Environmental (PD&E)		Right-of-Way Acquisition (ROW)				
				Design (PE)		Construction (CST)		Construction Engineering & Inspection (CEI)				

PRIORITY NO.	PROJECT NAME AND LIMITS	1PHASE & FUNDING PROGRAMMED						LENH IN MILES	COUNTY	NEXT PROJEC T PHASE	COST ESTIMATE OF PHASE	NOTES/IMPROVEMENT
		PHASE	FY 24	FY 25	FY 26	FY 27	FY 28					
1	Thomasville Rd Multi-Use Path	-	-	-	-	-	-	2.4	Leon	CST	\$9.5 M	Feasibility Study approved January 31, 2022.
	<i>Betton Rd to Metropolitan Blvd</i>								<i>Design is at 60% completion by the Florida Department of Transportation.</i>			
2	2CRA Downtown Sidewalk Improvements	-	-	-	-	-	-	0.2	Leon	CST	\$4.6 M	Work to include landscaping, drainage, signage and 1ADA and pedestrian enhancements.
	<i>Jefferson St to Call St</i>								<i>Design is underway by the City of Tallahassee Underground Utilities Department.</i>			
3	Old St. Augustine Rd Sidewalk	-	-	-	-	-	-	1.4	Leon	CST	\$671,700	Sidewalk to connect to existing pedestrian facilities on Lafayette Street.
	<i>Lafayette St to Paul Russell Rd</i>								<i>Design is underway by Leon County Engineering Department.</i>			
4	Oak Ridge Rd Multi-Use Path	-	-	-	-	-	-	5.2	Leon	FS	\$	Multi-use path to connect to two major arterial roads.
	<i>Crawfordville Rd to Woodville Hwy</i>											
5	Goose Pond Trail	-	-	-	-	-	-	1.2	Leon	FS	\$	Connect existing Goose Pond Trail on Mahan Dr to the multimodal path on Weems Rd.
	<i>Mahan Dr to Weems Rd</i>											

¹ PROJECT PHASES

(FS) Feasibility Study
 (PD&E) Project Development & Environmental
 (PE) Design

(ROW) Right-of-Way
 (CST) Construction
 (CEI) Construction Engineering and Inspection

²ACRONYMS

ADA -Americans with Disabilities Act
 CRA - Community Redevelopment Agency

Previous Priority No. 2 - N Monroe Street Sidewalk (*John Knox Rd-Lakeshore Dr*) ROW Acquisition @ \$325,100 is funded in FY 24 and CST @ \$4,570,270 is funded in FY 25.

Fiscal Year 2025 - Fiscal Year 2029

Capital Region Transportation Planning Agency

Regional Trails

Draft Project Priority List: Public Meeting 5/31/23

PRIORITY NO.	PROJECT NAME AND LIMITS	1PHASE & FUNDING PROGRAMMED						LENGTH IN MILES	COUNTY	NEXT PROJECT PHASE	COST ESTIMATE OF PHASE	NOTES
		PHASE	FY 24	FY 25	FY 26	FY 27	FY 28					
1	US 90 Multiuse Trail	PD&E	\$1.52 M	-	-	-	-					The US 90 Multi-Use Trail FS approved May 17, 2022. Project cost estimates developed once PD&E at 60% completion.
	Pedrick Road to Leon County Line at Lake Miccosukee 451044-2						WPN	9.7	Leon	PE	\$	
	Leon County Line at Lake Miccosukee to the Monticello Trail							10.5	Jefferson	PD&E	\$1 M	
2	Bloxham Cutoff Road Multiuse Trail	PE	\$630,000	-	-	-	-	4.78	Leon	CST	\$	The CRTPA is finalizing the FS. Construction estimates provided at 60% design.
	Wakulla Springs State Park to the St Marks Trail						WPN 410172-2					
3	Tallahassee to Havana Trail Ironbridge Rd	-	-	-	-	-	-	6.5	Leon & Gadsden	PE	\$	The Tallahassee to Havana Trail FS approved November 21, 2022.
	Orchard Pond Rd to Havana Main St (US27)											
4	Apalachee Pkwy (US 27) Connector Trail	-	-	-	-	-	-	0.6	Leon	PE	\$	
	Sutor Road to Conner Blvd											
5	Forest Trail North Springhill Rd	-	-	-	-	-	-	5.2	Leon	FS	\$	
	Trout Pond to Lake Henrietta											
6	Nature Coast Multiuse Trail			-	-	-	-	14	Wakulla Jefferson	PD&E	\$	
	Lighthouse Rd to Taylor Co Line											

PRIORITY NO.	PROJECT NAME AND LIMITS	1PHASE & FUNDING PROGRAMMED					LENGTH IN MILES	COUNTY	NEXT PROJECT PHASE	COST ESTIMATE OF PHASE	NOTES	
		PHASE	FY 24	FY 25	FY 26	FY 27						FY 28
1	Lake Bradford Dr and Stadium Dr Intersection	-	-	-	-	-	-	0.4	Leon	PE	\$	CRTPA Presentation November 15, 2022.
	<i>Lake Bradford Rd/Stadium Dr/Gaines St/Varsity Dr</i>											
2	Thomasville Rd	-	-	-	-	-	-	0.2	Leon	PE	\$	Corridor improvements to enhance traffic circulation for vehicular and multimodal users.
	<i>Signalization/Realignment of Ox Bottom Rd and Velda Dairy Rd at Thomasville Rd.</i>											
3	Orange Ave and Springhill Rd Intersection	-	-	-	-	-	-	0.1	Leon	Study	\$	Study to examine intersection to include recommended improvements.
	<i>Operational and safety improvements.</i>											
4	Thomasville Road	-	-	-	-	-	-	0.8	Leon	PE	\$	Midtown Area Plan approved Oct. 19, 2020.
	<i>7th Avenue to Betton Road</i>											
5	Thomasville Road	-	-	-	-	-	-	0.8	Leon	PE	\$	Midtown Area Plan approved Oct. 19, 2020.
	<i>7th Avenue to Betton Road</i>											

PRIORITY NO.	FDOT FPID ¹	PROJECT NAME & ROADWAY	PHASE ² & FUNDING PROGRAMMED					NEXT PROJECT PHASE	COST ESTIMATE TO FUND THE PHASE	NOTES	
			PHASE	FY 24	FY 25	FY 26	FY 27				FY 28
1	219785-2	Annual Funding	OPS	\$ 500,000	\$ 500,000	\$ 500,000	\$ 500,000	-	OPS	500,000	Request for annual funding for the TMC in FY 28 & FY 29
2		ATC Cabinet Upgrades	-	-	-	-	-	-	CAP	\$1.5M	Request funding annually for 5 years beginning in FY26. ITS Master Plan Project #5
<i>Various Locations</i>											
3		Adaptive Traffic Signal Control (US90)	-	-	-	-	-	-	CAP	\$1.43M	Request funding in FY24. ITS Master Plan Project #14
<i>Capital Circle NW to Monroe St</i>											
4		Adaptive Traffic Signal Control (US 27)	-	-	-	-	-	-	CAP	\$1.12M	Request Funding in FY25. ITS Master Plan Project #16
<i>Monroe St to Conner Blvd</i>											

Fiscal Year 2025							
Priority Ranking	FDOT WP#	Description	Local	FDOT	BIL-AIG	FAA	Total
1	446641-1	Terminal Modernization - Elevator & Air Handler Improvements	\$ 500,000	\$ 900,000	\$ 1,400,000		\$ 2,800,000
2	446640-1	Terminal Modernization – Landside Restroom Renovations		\$ 750,000	\$ 1,250,000		\$ 2,000,000
FY25 Total							\$ 4,800,000
Fiscal Year 2026							
Priority Ranking	FDOT WP#	Description	Local	FDOT	BIL-AIG	FAA	Total
1	448565-1	Taxiway Charlie, Zulu and Helicopter Parking (Design)		\$ 175,000	\$ 575,000		\$ 750,000
2		Terminal Passenger Loading Bridge Replacement - A5/A6		\$ 1,300,000	\$ 2,400,000		\$ 3,700,000
FY26 Total							\$ 4,450,000
Fiscal Year 2027							
Priority Ranking	FDOT WP#	Description	Local	FDOT	BIL-AIG	FAA	Total
1	448565-1	Taxiway Charlie, Zulu and Helicopter Parking (Construction)	\$ 1,000,000			\$ 7,000,000	\$ 8,000,000
2	450038-1	Air Carrier Apron Improvements	\$ 550,000	\$ 550,000		\$ 2,000,000	\$ 3,100,000
FY27 Total							\$ 11,100,000
Fiscal Year 2028							
Priority Ranking	FDOT WP#	Description	Local	FDOT	BIL-AIG	FAA	Total
1	416010-7	Airport Access and Roadway Realignment Phase II	\$ 2,500,000	\$ 2,000,000			\$ 4,500,000
FY28 Total							\$ 4,500,000
<p>¹ Abbreviations & Acronyms</p> <p>BIL Bipartisan Infrastructure Law WP# Work Program Number AIG Formula Infrastructure Allocations FDOT Florida Department of Transportation FAA Federal Aviation Authority</p>							

Capital Region Transportation Planning Agency

Fiscal Year 2025 - Fiscal Year 2029
StarMetro (Transit)

Draft Project Priority List: Public Meeting 5/31/23

PRIORITY NO.	PROJECT NAME and DESCRIPTION	COST
<i>Monitor and Audio Equipment at C.K. Steele Plaza</i>		
1	C.K. Steele Plaza, located downtown and serving as StarMetro's main transit center with 24 bus bays, does not have digital signage or a digital information kiosk and has substandard speakers and audio equipment. This project will provide digital signage at C.K. Steele Plaza for real-time service schedules, emergency messages, and other information for customers. StarMetro will also update and upgrade the public announcement system simultaneously with digital sign installation and implementation and two digital information kiosks which have audio capabilities for ADA compliance.	\$500,000
<i>Construction of multi-bay Southside Sustainable Transit Center - (Meridian and Orange)</i>		
2	This transit center will provide an off-street location and possibly on-street bus bays for customers to transfer between multiple routes, serve as a layover point for operators, will assist to improve system performance, will have public restrooms, an information booth, supervisor offices, and meeting space. The building will be constructed with solar panels on the roof, overhead charging stations for transit buses and plug in chargers for staff vehicles. In addition, the SuperStop will allow StarMetro to develop neighborhood circulators on the Southside to efficiently provide transportation options for elderly, disabled and low-income individuals located in the area and improve service to the Veteran's Administration Clinic.	\$5 M
<i>Charging Infrastructure to support an all-Electric Bus Fleet</i>		
3	Install depot charging for 66 buses at StarMetro's bus barn including electrical, structural, and civil engineering, design, and remote monitoring,	\$500,000
<i>Redevelopment of C.K. Steele Plaza Planning Study</i>		
4	Initiate an environmental assessment, feasibility study, and preliminary design of C.K. Steele Plaza to identify the needs, challenges, opportunities, and funding options to transform the Plaza from a single-use transit facility into a mixed-use, multistory intermodal facility with opportunities for housing StarMetro Administrative Staff; leasable space for office, restaurants, and retail activities; and connections to intercity transportation such as the Gadsden Express, Monticello Express, Greyhound, Megabus, Flixbus.	\$500,000



Next Steps



- Provide the public additional opportunities to comment on the TIP & PPLs
- Present the Draft FY 2024 - FY 2028 TIP for CRTPA Board Approval
- CRTPA Meeting - Monday, June 19, 2023, In-Person and Virtual (1:30 P.M)
 - Tallahassee City Hall, 300 S. Adams Street
- Transmit the adopted FY 2024 - FY 2028 TIP to FDOT District 3 Secretary
- Governor approves final TIP/State Transportation Improvement Program



Public Participation

- Comments may also be provided via the CRTPA Website.

Contact Us Online: crtpa.org/Contact-Us

Any comments or questions please contact Suzanne Lex.

Email: Suzanne.Lex@crtpa.org

Telephone: (850) 891-8627

- Comments may also be provided via the CRTPA Website.

Contact Us Online: crtpa.org/Contact-Us

- For additional information on the CRTPA, and the TIP and PPLs.

Visit: www.crtpa.org/What's New



Thank you for attending.

Comments

Questions ???