

# **Southwest Area Transportation Plan**

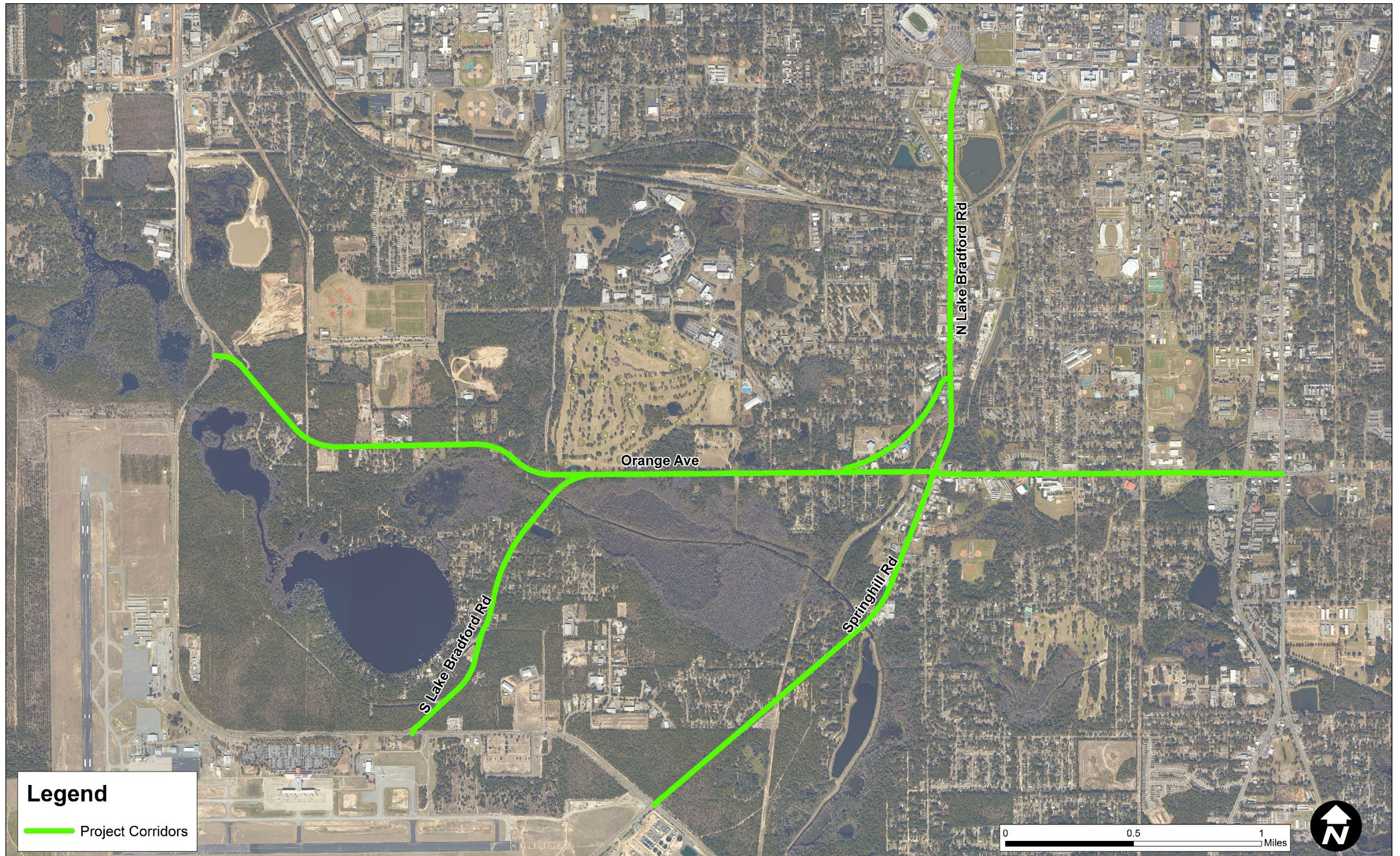
## ***Project Update***

CRTPA Board Retreat

November 26, 2018



# Project Corridors





# Project Purpose

To develop corridor plans that enhance safety, mobility, and connectivity in the southwest area of Tallahassee.

- Preserve the character of the existing neighborhoods and environmental features
- Consider data and analysis
- Consider public/stakeholder input

# Project Background

- Began planning study in October 2017
- Data Collection and Analysis related to:
  - Traffic Counts
  - Bicycle/Pedestrian Facilities
  - Environmental
  - Crash and Safety Data
  - Land Use
  - Transit
- Project Team - CRTPA, Blueprint staff, and Kimley-Horn
- Technical Team - Project Team plus City, County, and FDOT staff



# Project Considerations

- Blueprint Airport Gateway
  - Roadway enhancement leading from Tallahassee International Airport to Downtown Tallahassee and universities
- Florida Department of Transportation Project Development and Environment for Orange Avenue
  - Feasibility Study for Orange Avenue widening

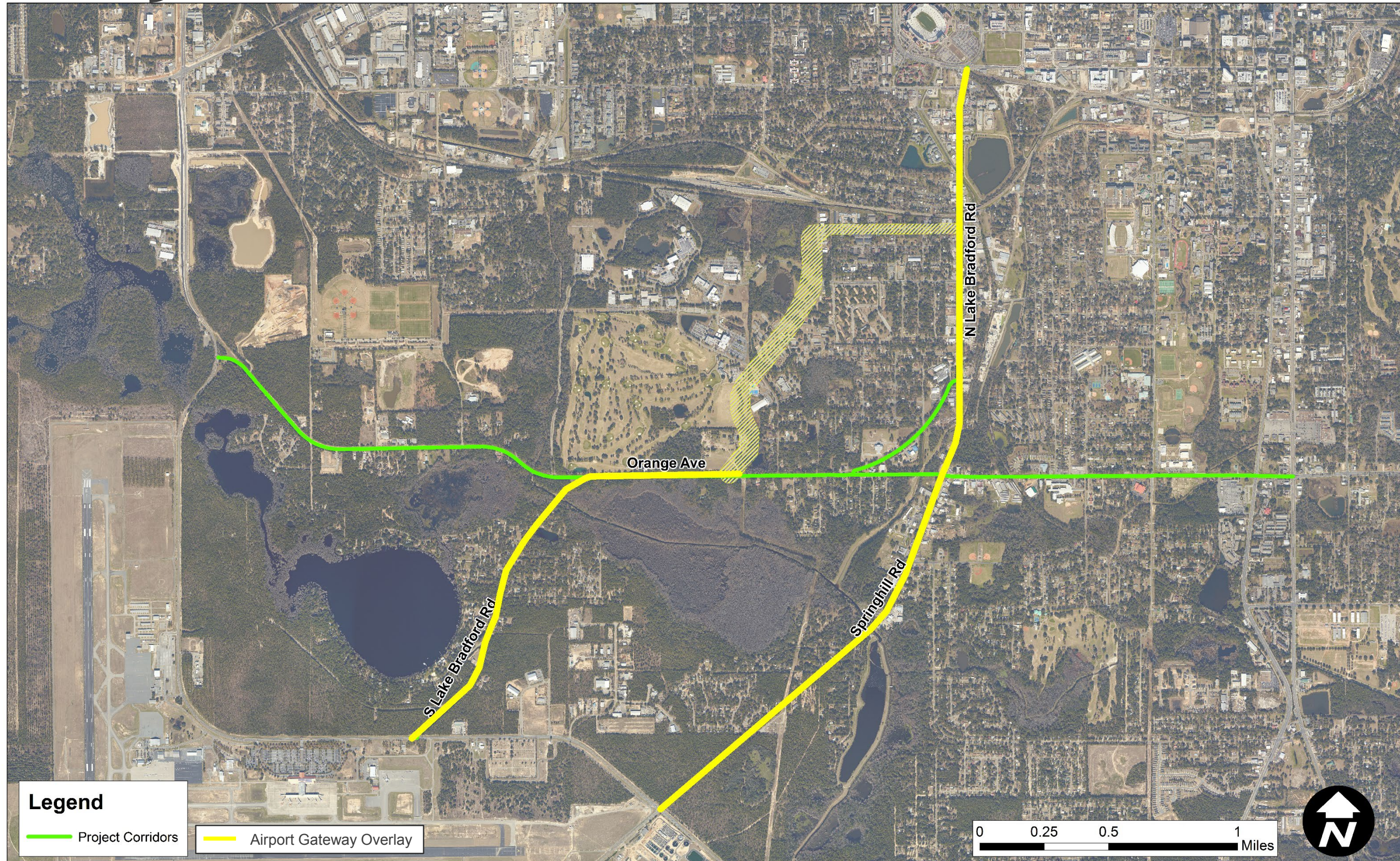


# Project Considerations

- Blueprint Airport Gateway
  - Blueprint Intergovernmental Agency Board approved the Airport Gateway Amendment in March 2018
  - Dedicated funding for the Airport Gateway Project to the following roadways:
    - Lake Bradford Road (N/S)
      - Capital Circle SW to Orange Avenue
      - Orange Avenue to Gaines Street
    - Orange Avenue
      - South Lake Bradford Road to new gateway road alignment
    - Springhill Road
      - Capital Circle SW to Orange Avenue
    - New corridor connecting Orange Avenue to N Lake Bradford Road (*not a part of the Southwest Area plan*)
      - Orange Avenue to North Lake Bradford Road



# Project Corridors





# Project Considerations

- Florida Department of Transportation (FDOT) began the PD&E Study for Orange Avenue (CCSW to Monroe Street) in October 2018.

FDOT began PD&E  
Study

October 2018

Anticipated meeting  
with FDOT to discuss  
public input

January 2019

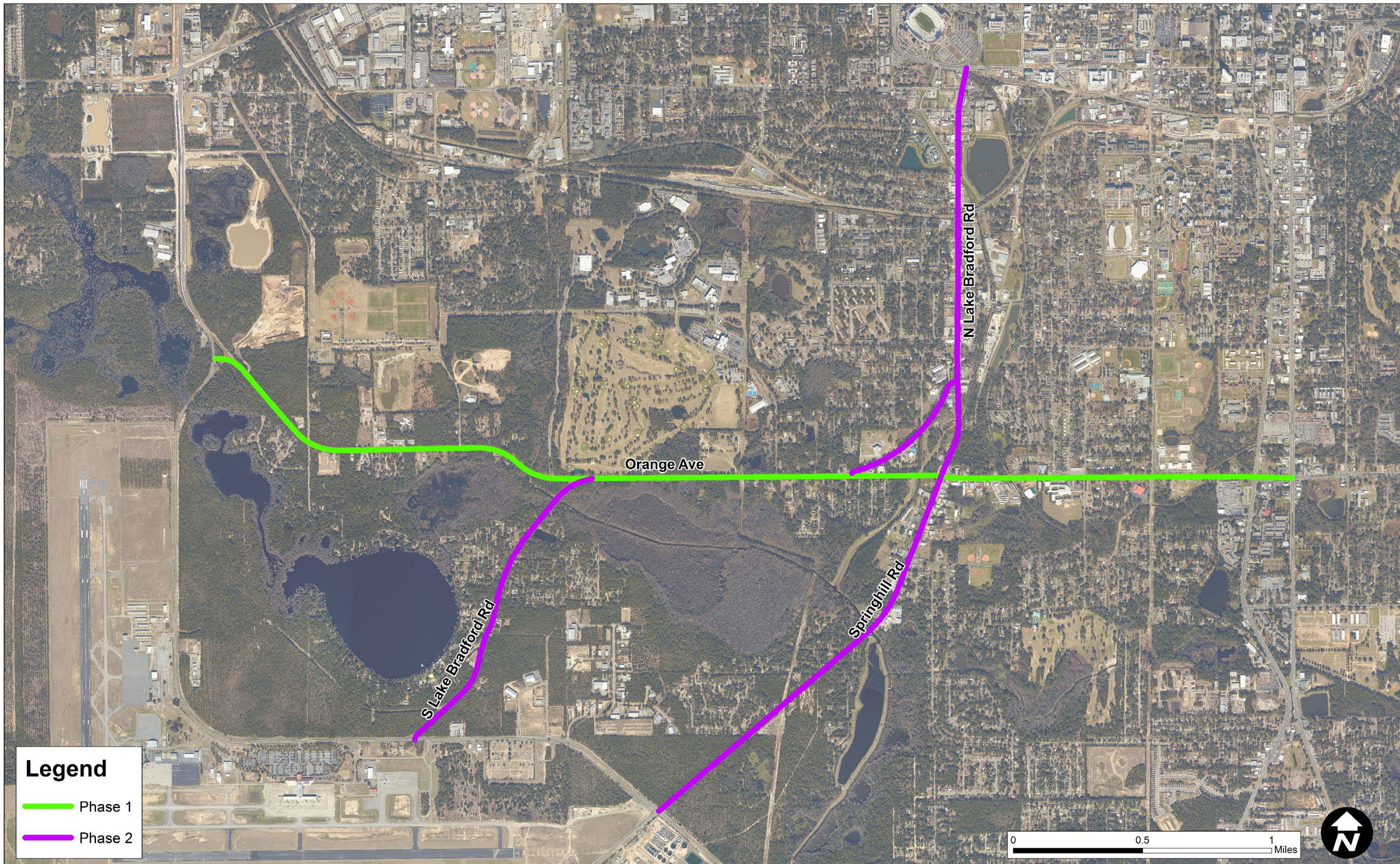
Anticipated completion  
of PD&E Study

Mid-to-Late 2020

- The SATP planning process took a two phased approach to address this accelerated need for public input related to Orange Avenue:
  - Phase 1 - Orange Avenue
  - Phase 2 - N/S Lake Bradford Road and Springhill Road



# Project Phases





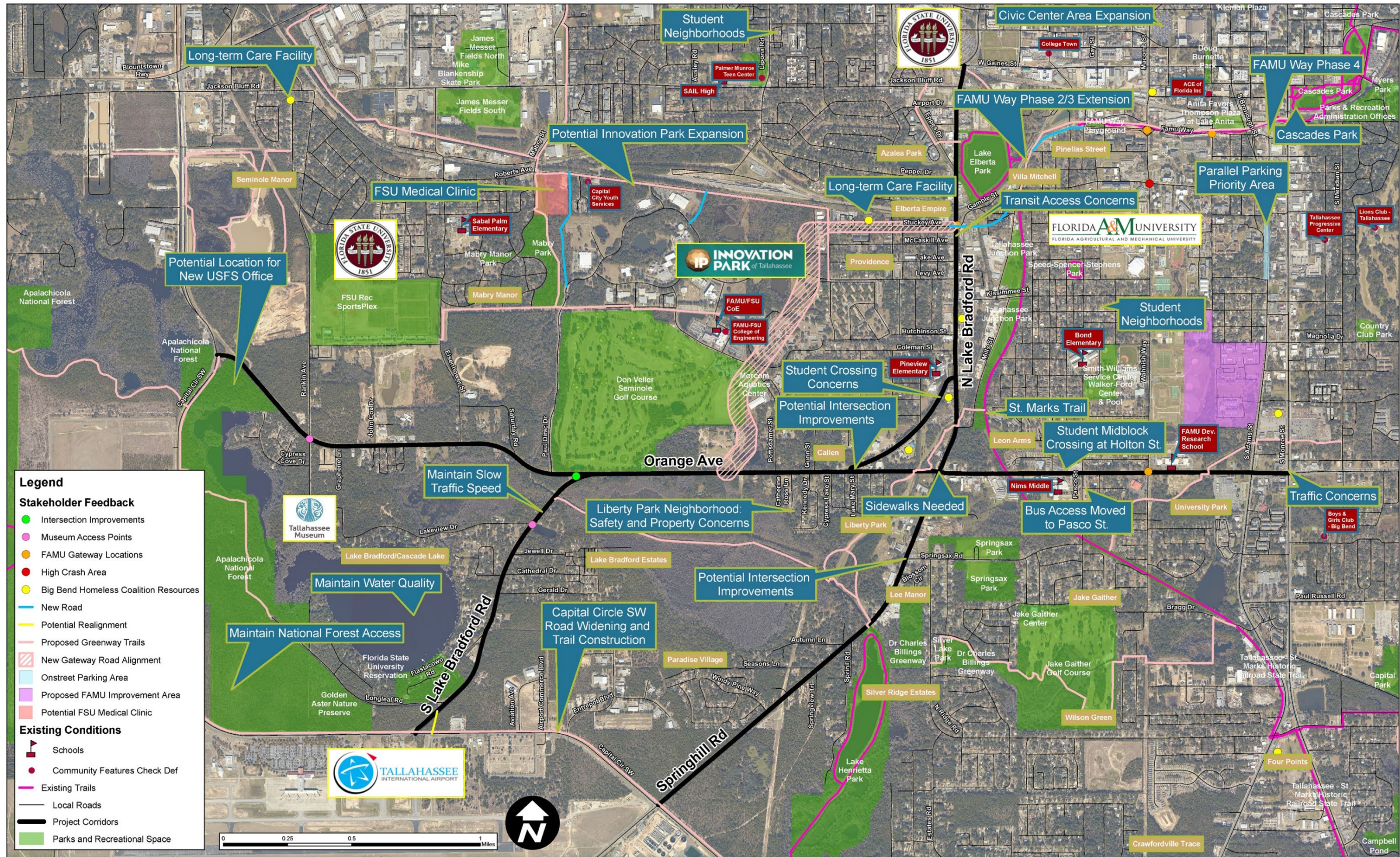
# Public Outreach

- ✓ 12 Stakeholder Meetings
  - FAMU Representatives
  - Big Bend Homeless Coalition
  - Leon County School Board and local schools
- ✓ 4 Neighborhood Meetings
  - Attendance ranged from 8 to 15 people
  - Still rescheduling due to Hurricane Michael
  -
- ✓ 2 Orange Avenue District Forums
  - June 2018 and September 2018
    - Over 40 attendees





# Stakeholder Feedback Map





# Stakeholder Feedback

- Student crossing areas should be improved.
- School bus access must be maintained.
- Transit headway, signage, and shelter improvements needed within the project area.
- Pedestrian and bicycle improvements are necessary to connect neighborhoods and businesses.
- Wayfinding signage is needed.
- Major improvements are planned for Innovation Park.
- Lighting, landscaping, and trash receptacles will improve the character of the area.
- Children are typically unaccompanied on neighborhood streets.
- Access to businesses and curb cuts should be maintained.
- Neighborhood connectivity is paramount.
- StarMetro access concerns for users near N Lake Bradford Rd between Stuckey and Levy Ave.
- Sidewalks, bike lanes, and trails are needed throughout project the area.
- Traffic concerns and widening requested for Orange Ave.
- Traffic noise can be a major concern.
- Traffic calming methods should be considered to reduce speeds in neighborhoods.



# Orange Avenue Preferred Roadway Enhancements

- **Four Travel Lanes**
  - Where future traffic projections justify additional travel lanes
    - Wahnish Way to Springhill Road
  - FDOT has begun PD&E process to determine feasibility





# Orange Avenue Preferred Roadway Enhancements

- Intersection Improvements
  - Possible realignment at S. Lake Bradford and Paul Dirac Road
  - Roundabouts
  - Additional intersections



Intersection Improvement



# Orange Avenue Preferred Roadway Enhancements

- Landscaping
  - Moderate landscaping throughout corridor
    - Small trees and shrubs located in the median





# Orange Avenue Preferred Roadway Enhancements

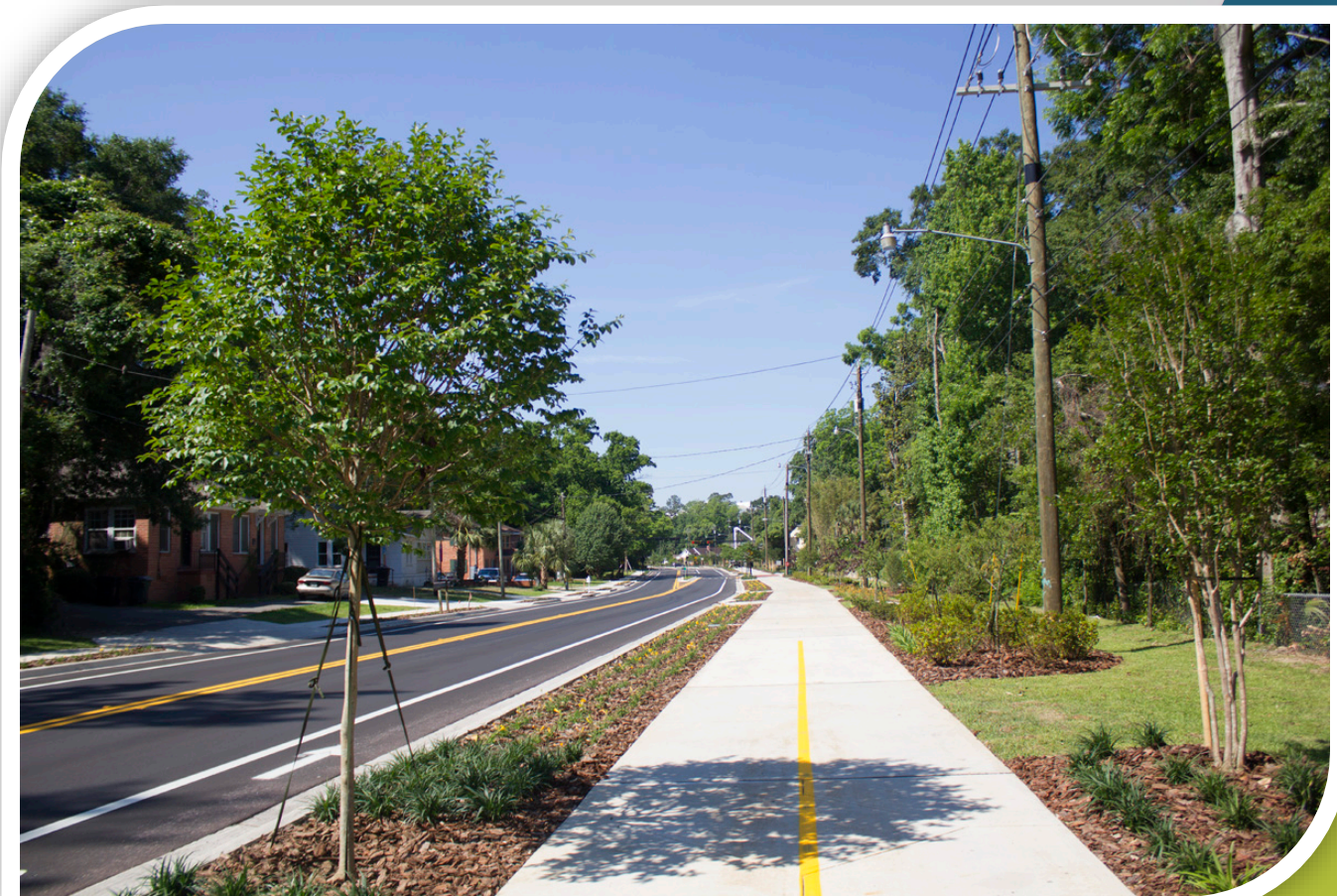
- Pedestrian Facilities

- Multi-Use Path

- *Most heavily supported facility type by public outreach participants*

- Sidewalks

- *Increase connectivity and create a complete network*

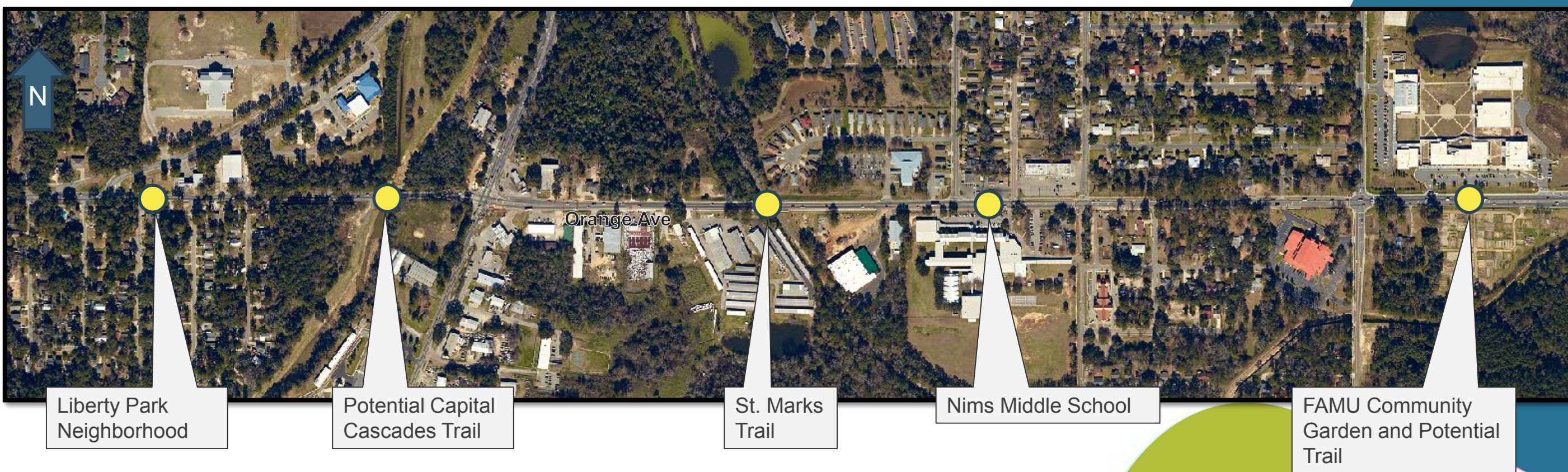




# Orange Avenue Preferred Roadway Enhancements

## ○ Crossings

- *Many comments from Neighborhood Associations regarding the need for additional AND upgraded pedestrian crossings along Orange Avenue (near schools, transit stops, and major intersections)*
- *Timeframe to Completion - near term to address safety needs*





# Orange Avenue Preferred Roadway Enhancements

## ○ Bicycle Facilities

- Multi-Use Path
  - *Most heavily supported facility type by public outreach participants*
- On-Street Bike Lanes
- Connection from Orange Avenue to St. Marks Trail
  - *Heavily supported connection by public outreach participants*
- Connection Options
  - New trail access
  - At grade connection with trail and roadway
  - New pedestrian bridge over roadway

## ○ Transit Facilities

- *Upgraded facilities desired along Orange Avenue by public outreach participants*
- Input will be provided to StarMetro for consideration



# Enhancement Implementation for Orange Avenue

## Short Term

- Pedestrian Crossings
- Transit Improvements
- Liberty Park Sidewalks
- Access Management

## Long Term

- Additional Travel Lanes
- On-Street Bike Lanes
- Multi-Use Path
- Landscaping
- Intersection Improvements



# Next Steps

- Finalize Orange Avenue Corridor Study
- Meeting with FDOT D3 to discuss recommendations for PD&E inclusion
- District Forums (January 2019)
  - Springhill Road
  - N/S Lake Bradford Road
- Community Open House
- Southwest Area Transportation Plan

