

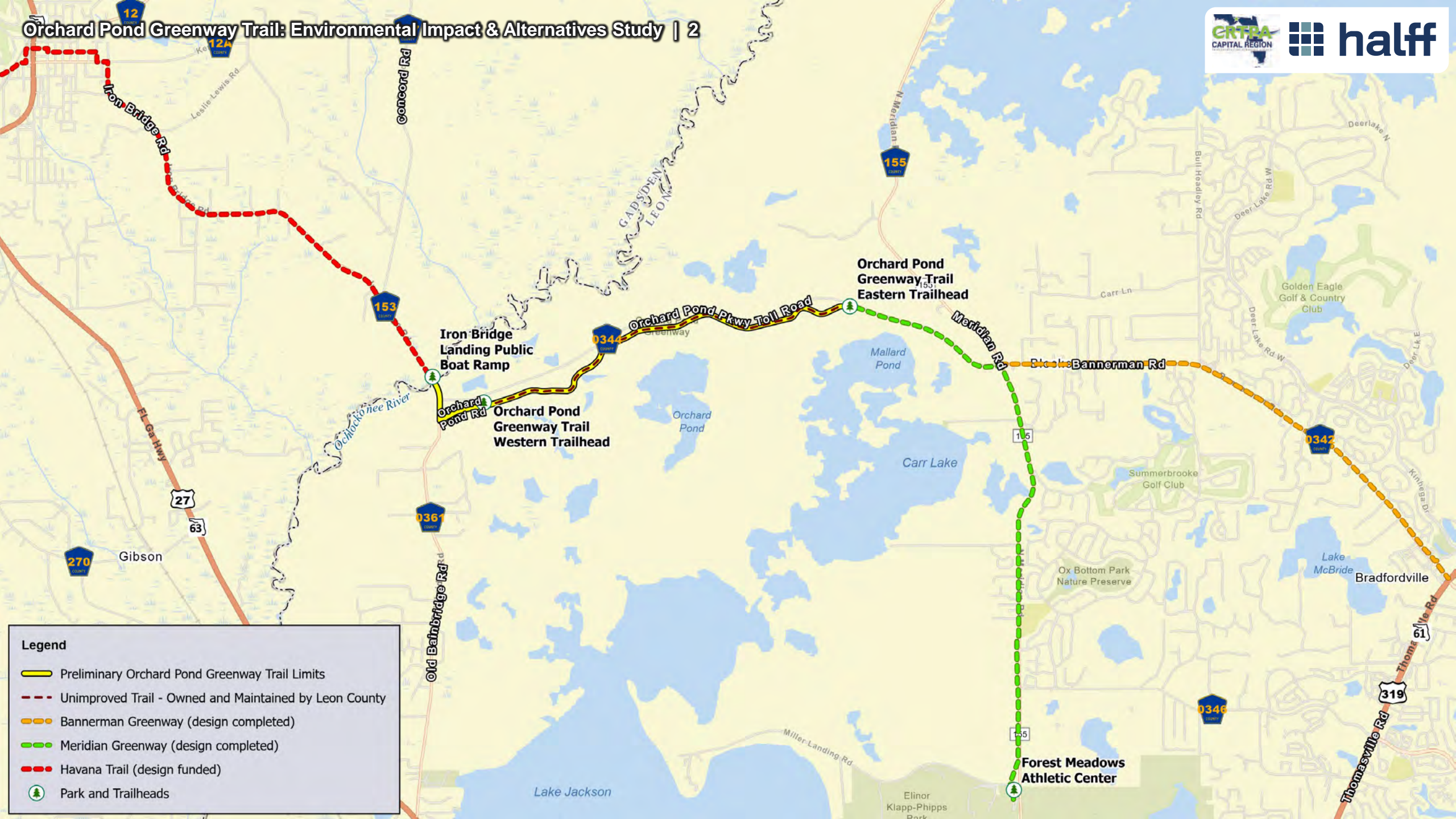
Orchard Pond Greenway

Environmental Impact and Alternatives Study


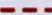


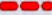



CRTPA Board Retreat

January 12, 2026



Legend

-  Preliminary Orchard Pond Greenway Trail Limits
-  Unimproved Trail - Owned and Maintained by Leon County
-  Bannerman Greenway (design completed)
-  Meridian Greenway (design completed)
-  Havana Trail (design funded)
-  Park and Trailheads



Orchard Pond Greenway Project Limits





Scope of Work

■ Public Involvement

- Newsletters
- HOA Articles
- Stakeholder Meetings
- Alternatives Public Meeting
- CRTPA Board Meeting (Public Hearing)

■ Engineering Analysis

- Trail and Bridge Alternatives Analysis
- Drainage Analysis
- Traffic Analysis Technical Memorandum
- Preliminary Engineering Report

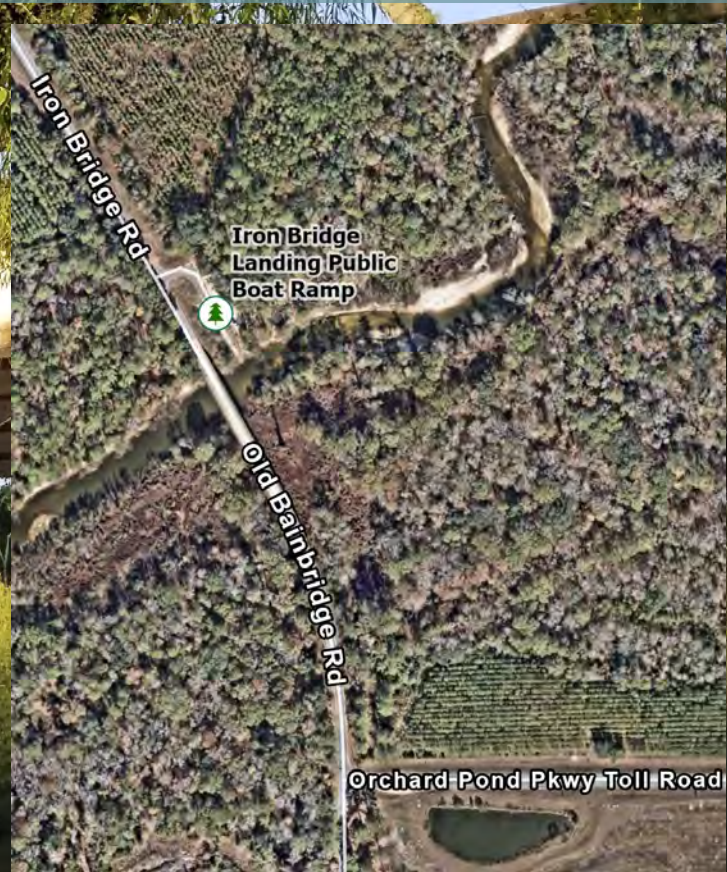


Scope of Work

- **Environmental Analysis**
 - Contamination Screening Evaluation Study (CSER)
 - Cultural Resource Assessment Survey (CRAS)
 - Natural Resources Evaluation Report (NRE)
 - Sociocultural Effects Evaluation (SCEE)
 - Section 4(f) Evaluation
- **Type 1 CE Documentation**
- **Location Design Concept Approval (LDCA)**

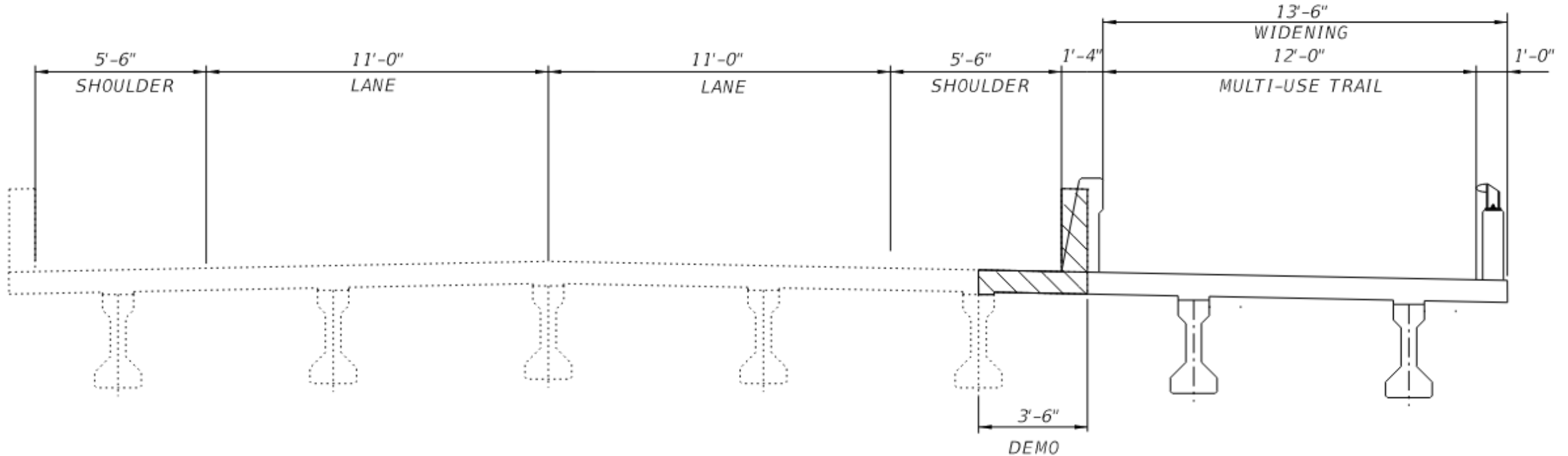


Iron Bridge Landing/Public Boat Ramp





Preliminary Alternative 1 – Widen Bridge



WIDENING TYPICAL SECTION

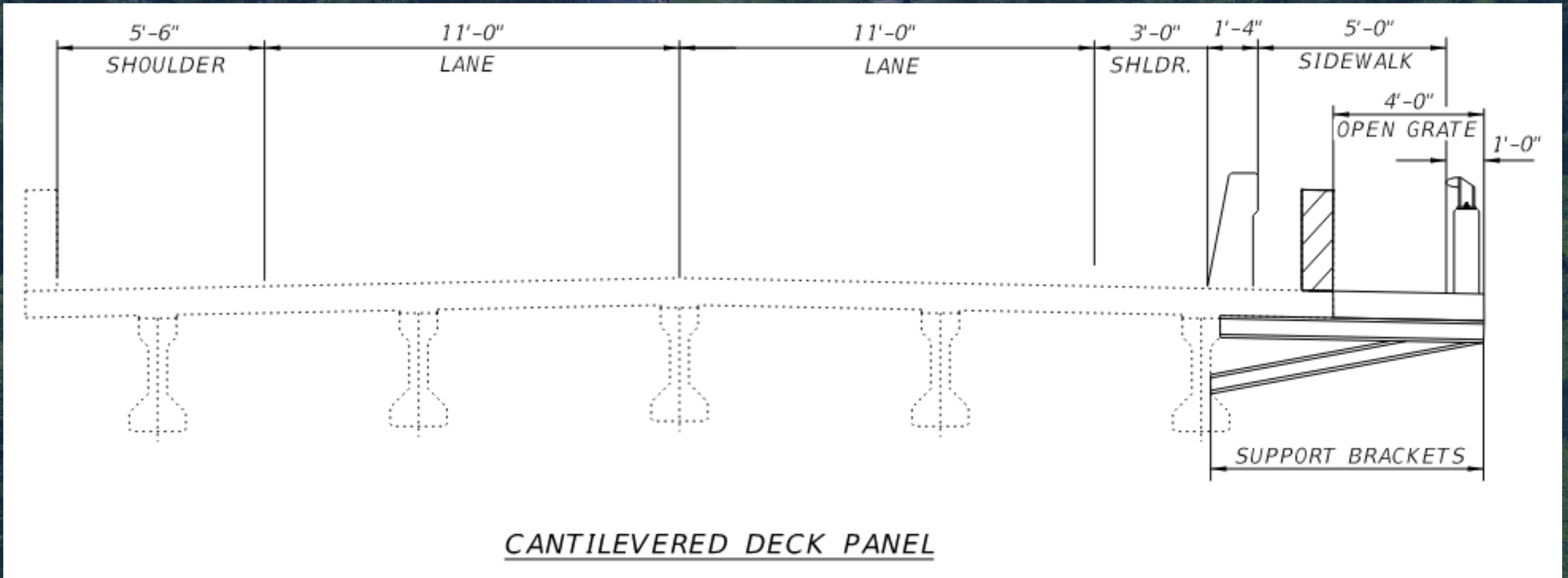


Preliminary Alternative 2 – Parallel Trail Bridge



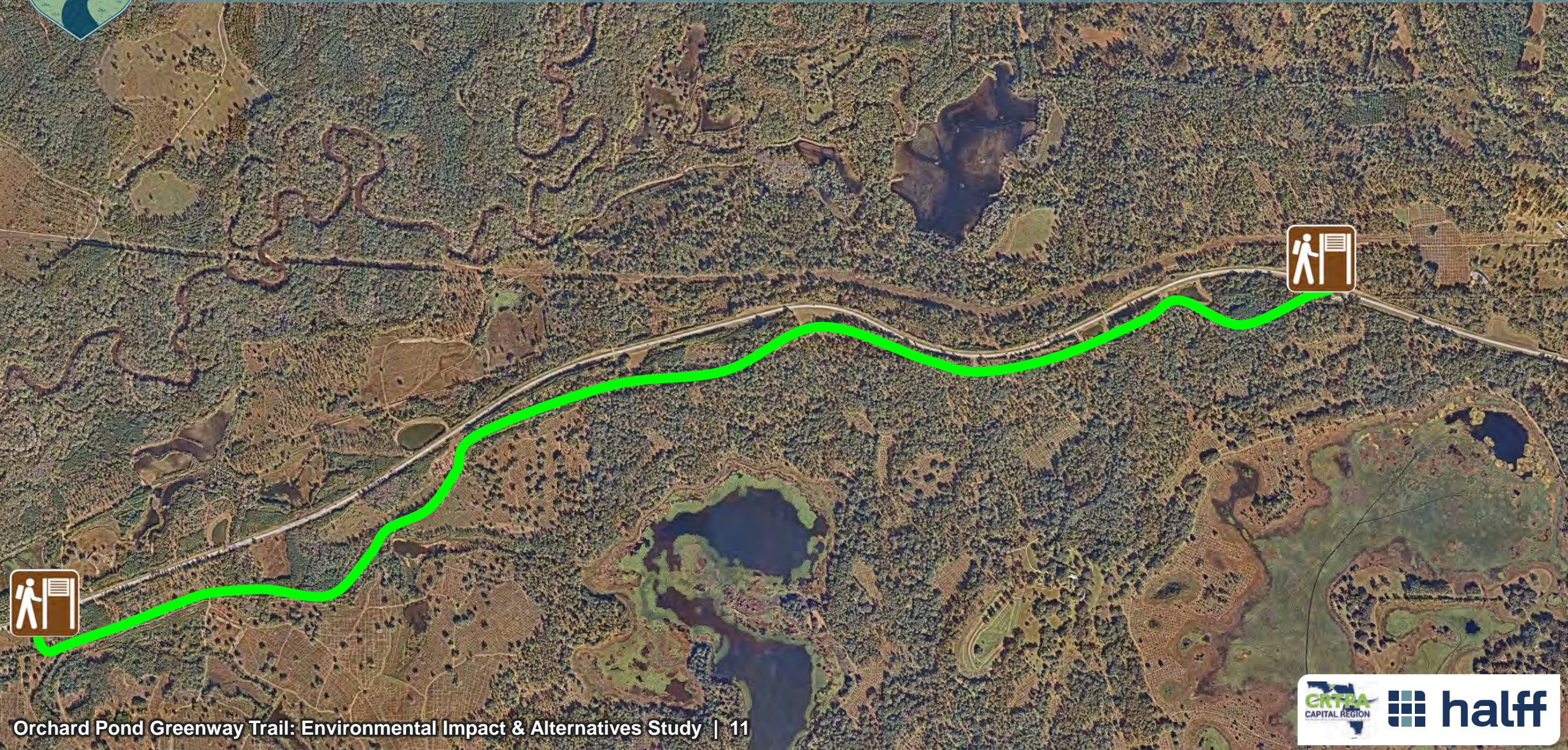


Preliminary Alternative 3 – Cantilevered Deck Panels





Trail Between Existing Trailheads



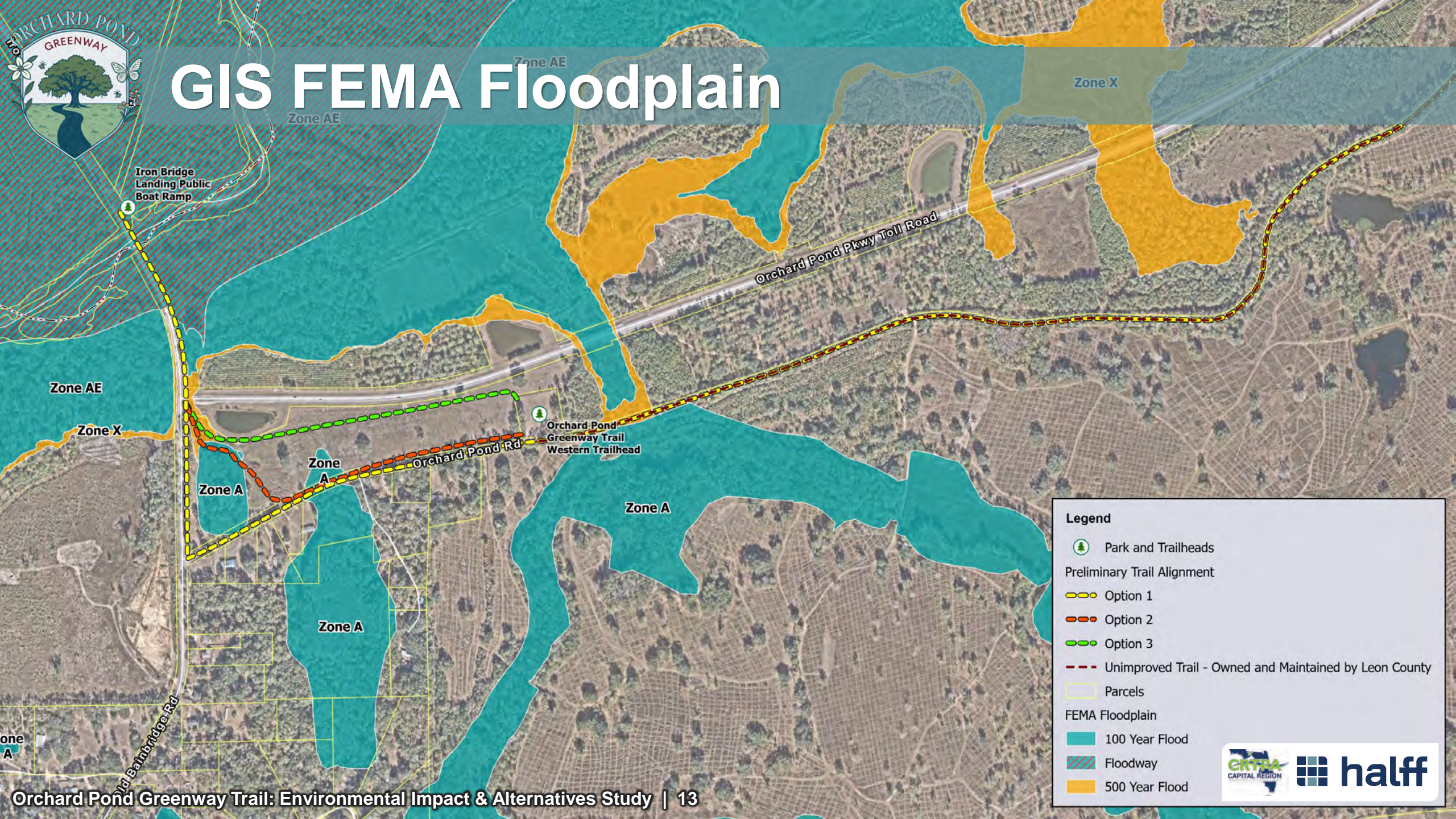


Trail Between Existing Trailheads





GIS FEMA Floodplain



Legend

Park and Trailheads

Preliminary Trail Alignment

Option 1

Option 2

Option 3

Unimproved Trail - Owned and Maintained by Leon County

Parcels

FEMA Floodplain

100 Year Flood

Floodway

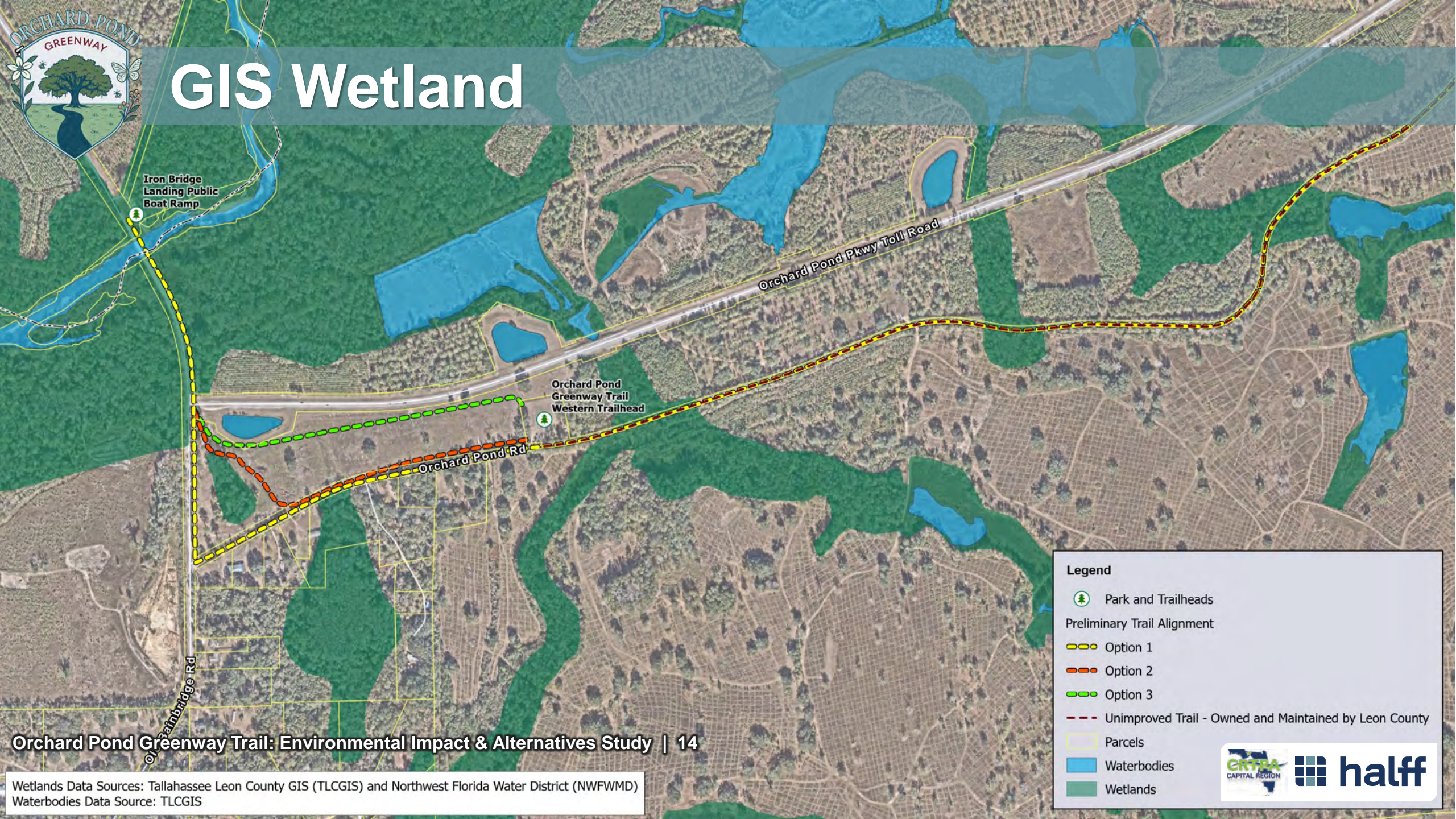
500 Year Flood

CRTBA
CAPITAL REGION

halff



GIS Wetland



Legend

Park and Trailheads

Preliminary Trail Alignment

Option 1

Option 2

Option 3

Unimproved Trail - Owned and Maintained by Leon County

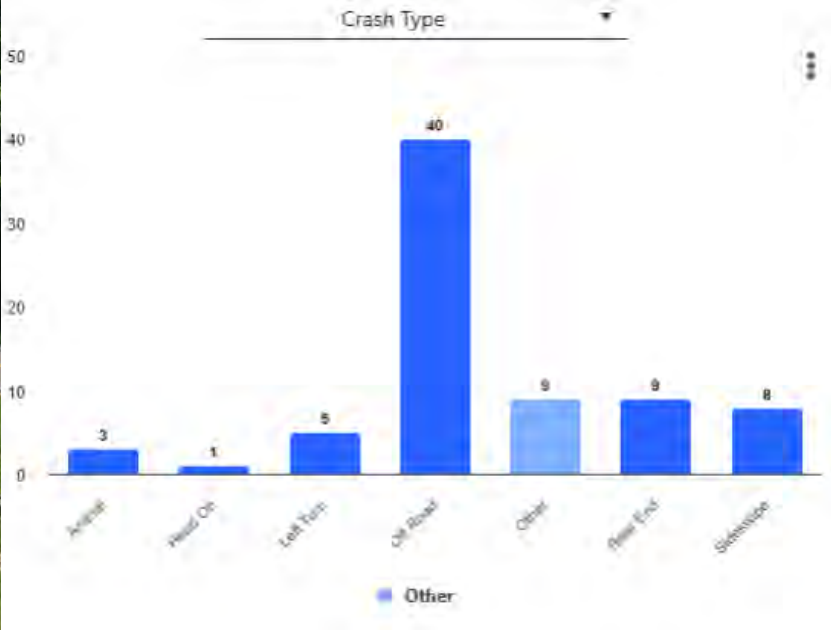
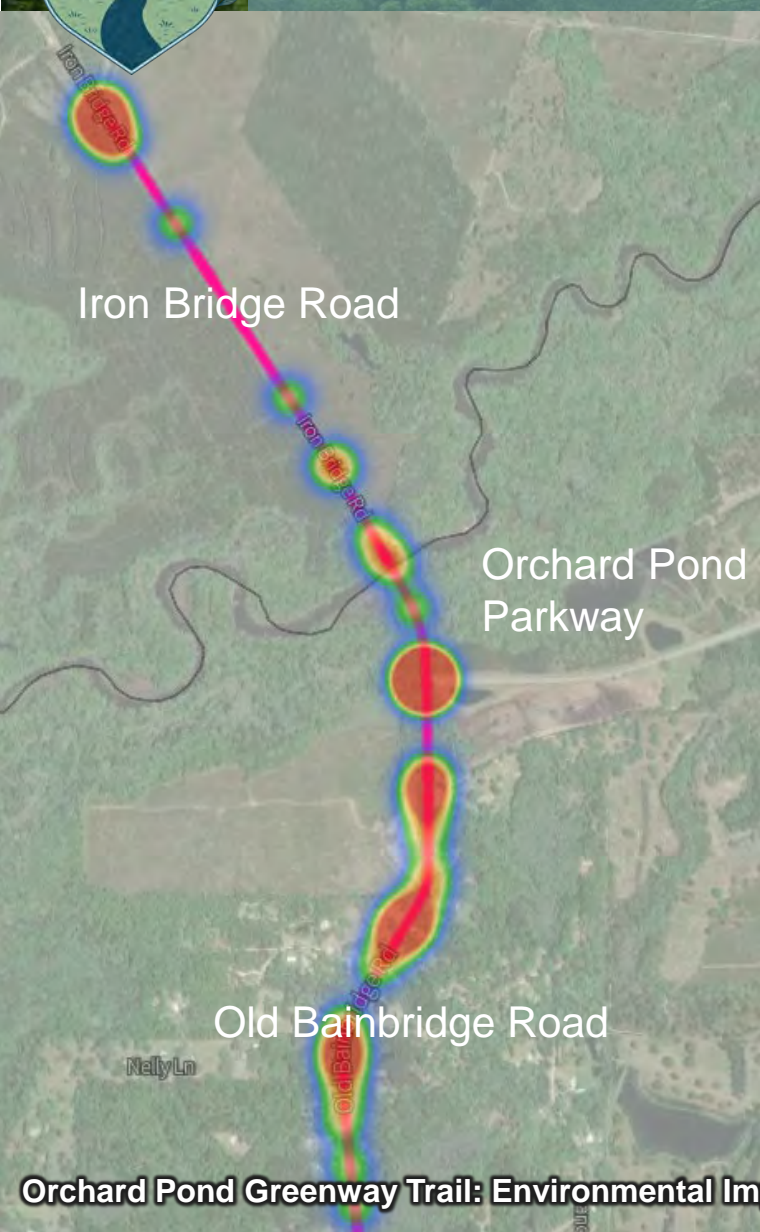
Parcels

Waterbodies

Wetlands

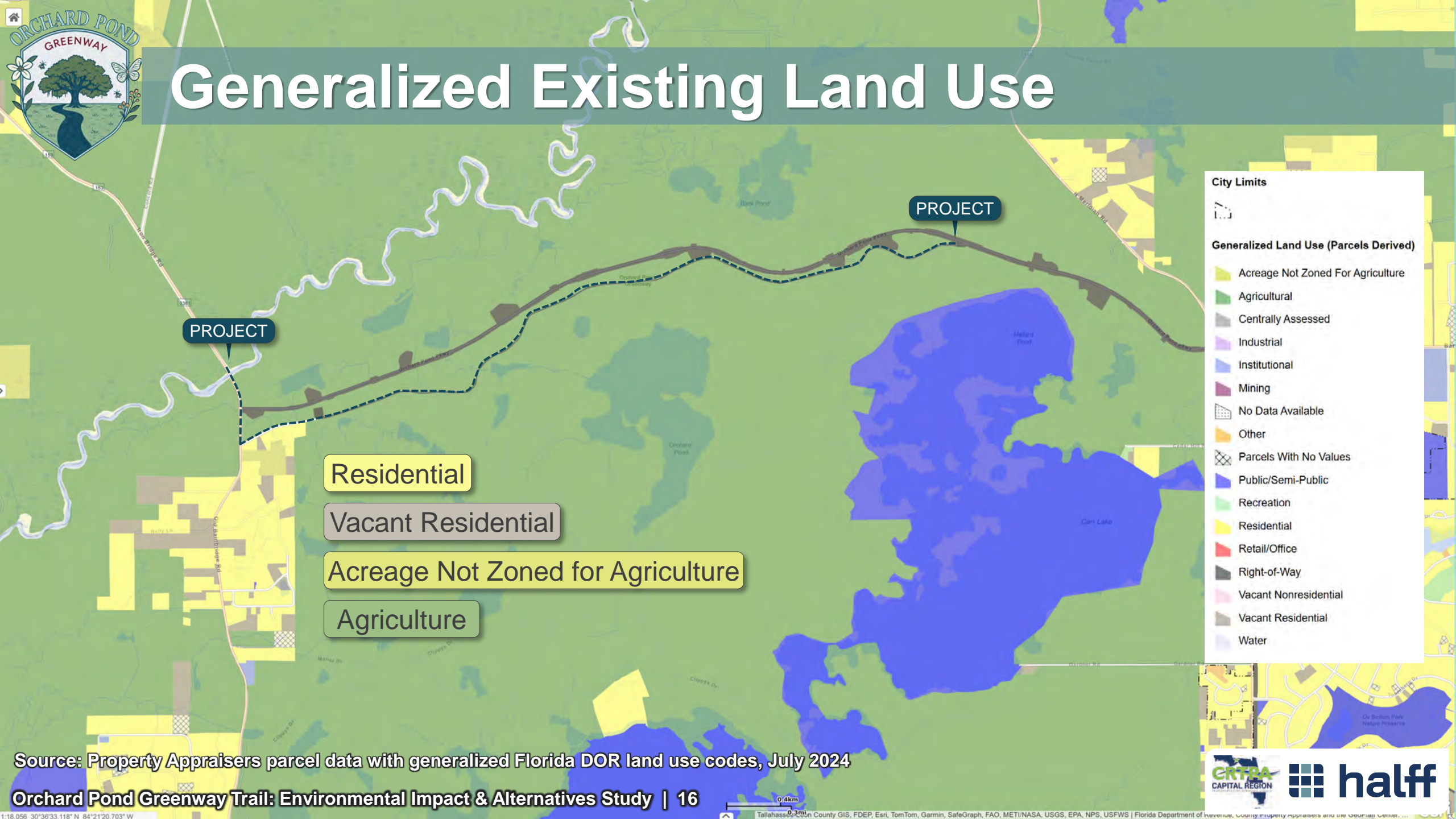


Traffic Safety Analysis - Crash Data





Generalized Existing Land Use



Source: Property Appraisers parcel data with generalized Florida DOR land use codes, July 2024





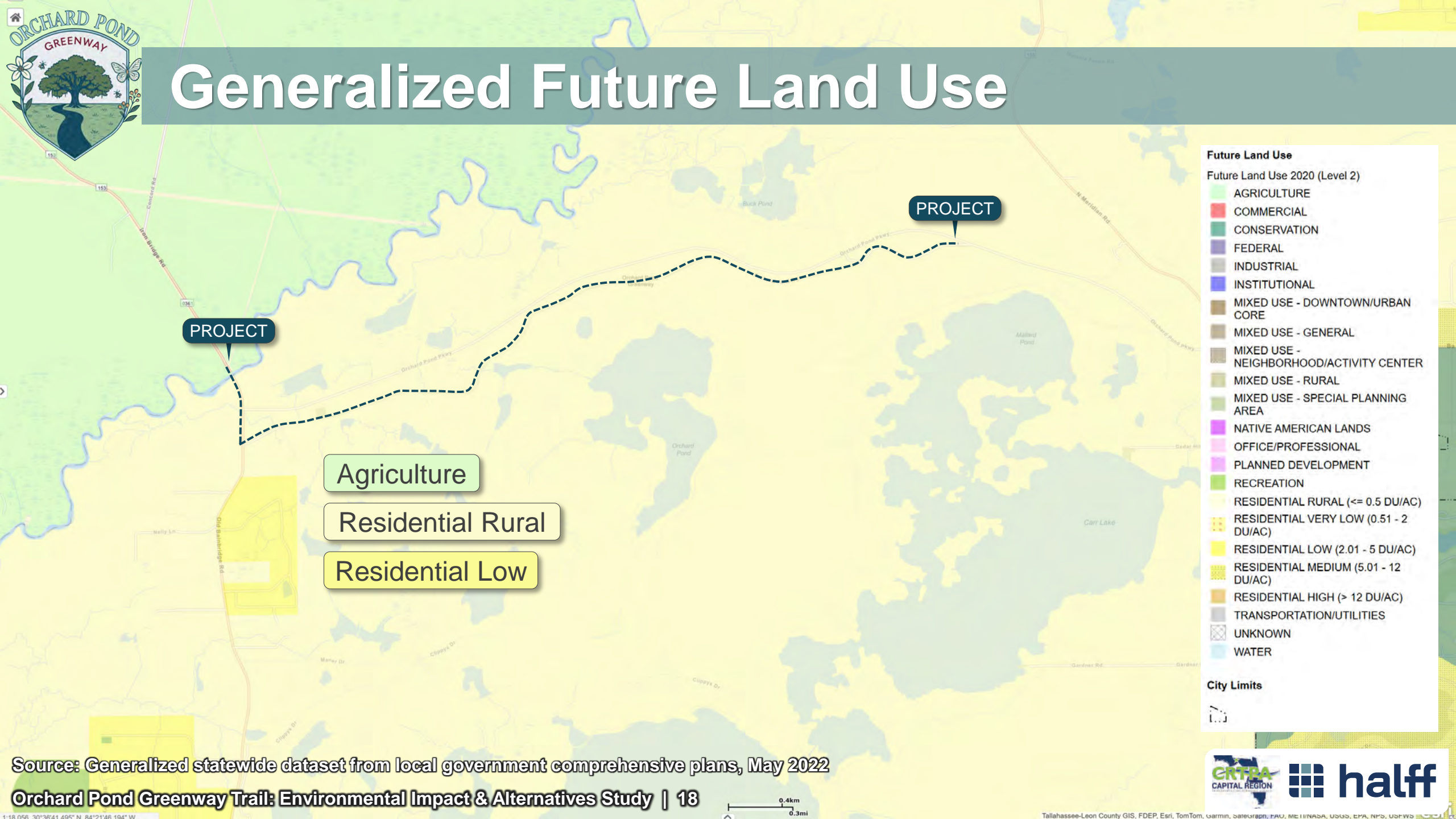
Residential Areas



Source: Land Use and Land Cover Data Florida Water Management Districts, June 2025



Generalized Future Land Use



Future Land Use

Future Land Use 2020 (Level 2)

- AGRICULTURE
- COMMERCIAL
- CONSERVATION
- FEDERAL
- INDUSTRIAL
- INSTITUTIONAL
- MIXED USE - DOWNTOWN/URBAN CORE
- MIXED USE - GENERAL
- MIXED USE - NEIGHBORHOOD/ACTIVITY CENTER
- MIXED USE - RURAL
- MIXED USE - SPECIAL PLANNING AREA
- NATIVE AMERICAN LANDS
- OFFICE/PROFESSIONAL
- PLANNED DEVELOPMENT
- RECREATION
- RESIDENTIAL RURAL (<= 0.5 DU/AC)
- RESIDENTIAL VERY LOW (0.51 - 2 DU/AC)
- RESIDENTIAL LOW (2.01 - 5 DU/AC)
- RESIDENTIAL MEDIUM (5.01 - 12 DU/AC)
- RESIDENTIAL HIGH (> 12 DU/AC)
- TRANSPORTATION/UTILITIES
- UNKNOWN
- WATER

City Limits

Agriculture

Residential Rural

Residential Low

Source: Generalized statewide dataset from local government comprehensive plans, May 2022



PROJECT

Orchard Pond Trailhead

PROJECT

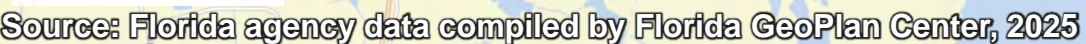
Cedar Hill Park & Boat Ramp

Orchard Pond Trailhead

Gardner Road Landing

Ox Bottom
Nature Preserve

Hawk's Rise Elementary School





Schedule - Environmental Impact and Alternatives Study (EIAS)

