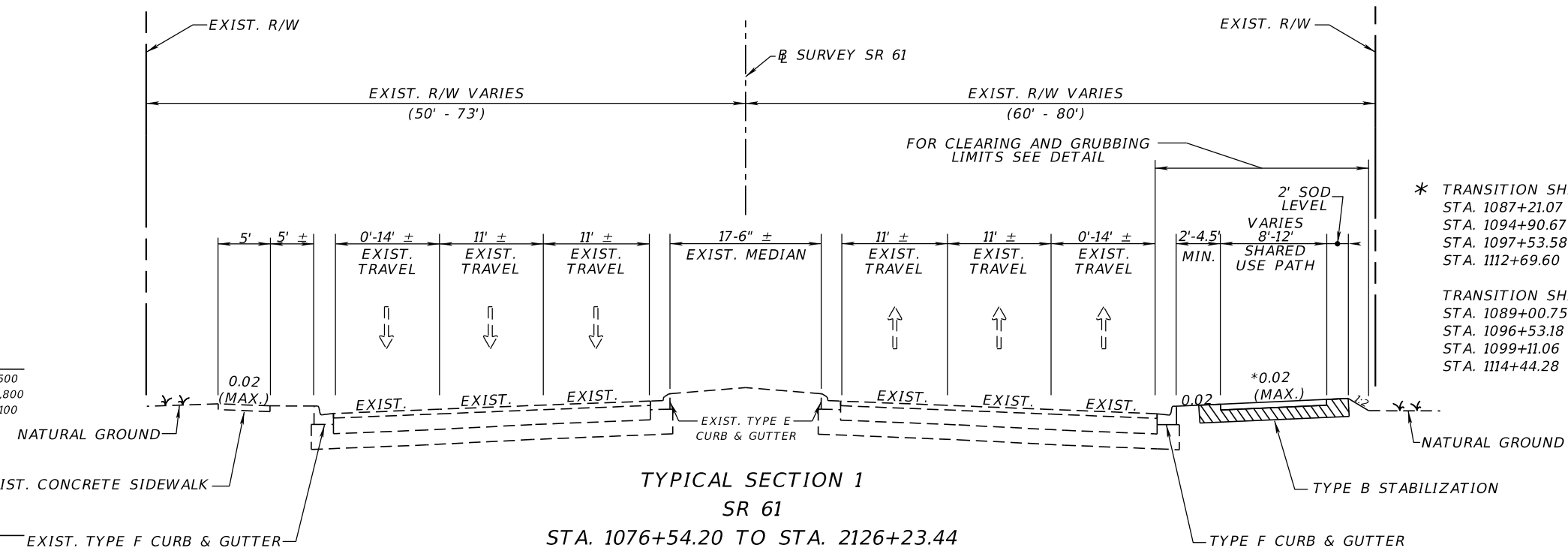


TRAFFIC DATA

CURRENT YEAR = 2021 AADT = 31,500
 ESTIMATED OPENING YEAR = 2025 AADT = 32,800
 ESTIMATED DESIGN YEAR = 2045 AADT = 39,100
 K = 9% D = 63.8% T = 4.29% (24 HOUR)
 DESIGN HOUR T = 2.14%
 DESIGN SPEED = 45 MPH
 POSTED SPEED = 45 MPH
 TARGET SPEED = 45 MPH
 CONTEXT CLASSIFICATION = C3C

SHARED USE PATH

DESIGN SPEED = 18 MPH (GRADES ≤ 4%)
 DESIGN SPEED = 30 MPH (GRADES > 4%)



* TRANSITION SHARED USE PATH FROM 0.02 TO -0.02
 STA. 1087+21.07 TO STA. 1087+96.07
 STA. 1094+90.67 TO STA. 1095+65.67
 STA. 1097+53.58 TO STA. 1098+28.72
 STA. 1112+69.60 TO STA. 1113+44.60

TRANSITION SHARED USE PATH FROM -0.02 TO 0.02
 STA. 1089+00.75 TO STA. 1089+75.75
 STA. 1096+53.18 TO STA. 1097+28.32
 STA. 1099+11.06 TO STA. 1099+86.06
 STA. 1114+44.28 TO STA. 1115+19.28

TYPICAL SECTION 1

SR 61

STA. 1076+54.20 TO STA. 2126+23.44

SHARED USE PATH

OPTIONAL BASE GROUP 1
 TYPE SP STRUCTURAL COURSE (1 1/2")

NOT TO SCALE

SIDE STREET RECONSTRUCTION

12" TYPE B STABILIZATION
 OPTIONAL BASE GROUP 6 (TYPE B - 12.5 ONLY)
 TYPE SP ASPHALTIC CONCRETE (TRAFFIC B) (1 1/2") (PG 76-22)
 ASPHALTIC CONCRETE FRICTION COURSE FC 9.5 (TRAFFIC B) (1 1/4") (PG 76-22)
 USE STATIC COMPACTION ONLY

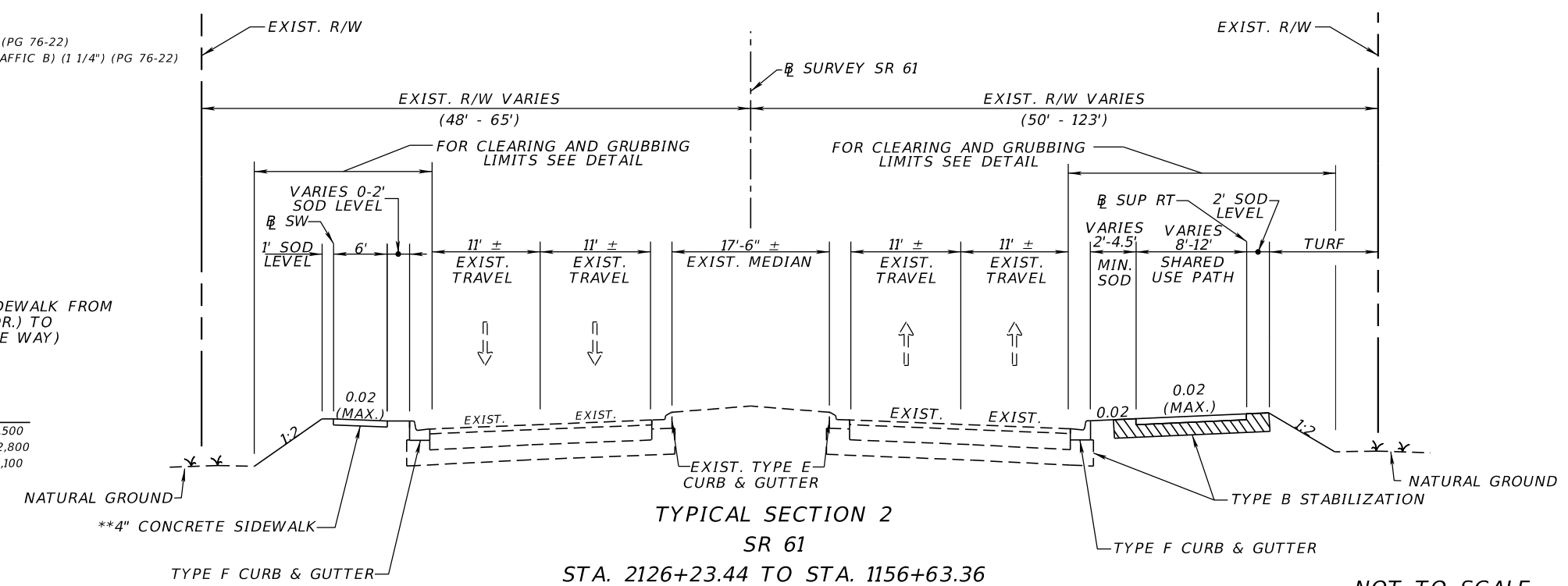
** CONSTRUCT PROPOSED SIDEWALK FROM
 STA. 1114+18.11 (GARDENIA DR.) TO
 STA. 1156+52.28 (WOODGATE WAY)

TRAFFIC DATA

CURRENT YEAR = 2021 AADT = 31,500
 ESTIMATED OPENING YEAR = 2025 AADT = 32,800
 ESTIMATED DESIGN YEAR = 2045 AADT = 39,100
 K = 9% D = 63.8% T = 4.29% (24 HOUR)
 DESIGN HOUR T = 2.14%
 DESIGN SPEED = 45 MPH
 POSTED SPEED = 45 MPH
 TARGET SPEED = 45 MPH
 CONTEXT CLASSIFICATION = C3R

SHARED USE PATH

DESIGN SPEED = 18 MPH (GRADES ≤ 4%)
 DESIGN SPEED = 30 MPH (GRADES > 4%)



TYPICAL SECTION 2

SR 61

STA. 2126+23.44 TO STA. 1156+63.36

SHARED USE PATH

OPTIONAL BASE GROUP 1
 TYPE SP STRUCTURAL COURSE (1 1/2")

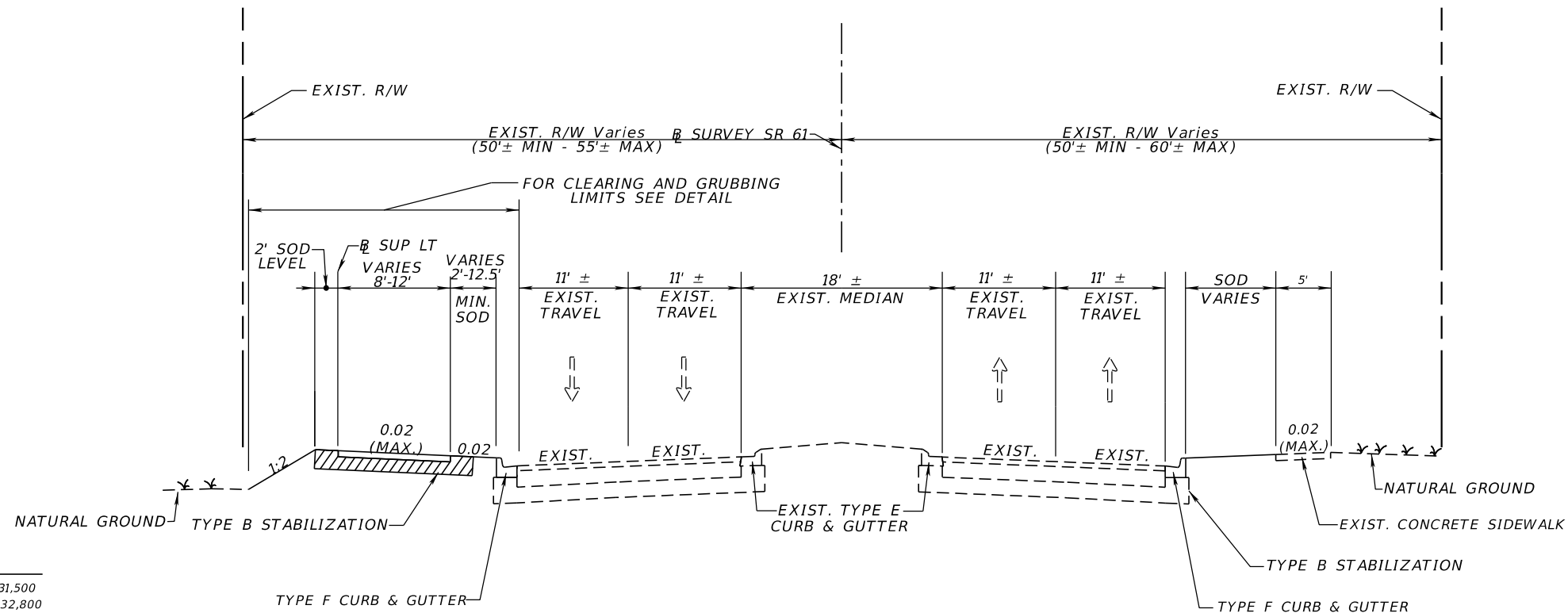
NOT TO SCALE

4/21/2023 2:00:08 AM W:\R99276 c:\users\z0r86694\appdata\local\pro\jectwise\workdir\mat-use-pw-13\dms41202\TYP\SR001.dgn

THE OFFICIAL RECORD OF THIS SHEET IS THE ELECTRONIC FILE DIGITALLY SIGNED AND SEALED UNDER RULE 61G15-23.004, F.A.C.

REVISIONS		ENGINEER OF RECORD		STATE OF FLORIDA DEPARTMENT OF TRANSPORTATION			SHEET NO.
DATE	DESCRIPTION	DATE	DESCRIPTION	ROAD NO.	COUNTY	FINANCIAL PROJECT ID	
	Preliminary, Subject to Change Phase II Submittal, April 21, 2023		JAMES J. JOHNSON, P.E. LICENSE NUMBER: 62546 MOTT MACDONALD FLORIDA, LLC. 1300 TIMBERLANE ROAD TALLAHASSEE, FLORIDA 32312	SR 61	LEON	448868-1-52-01	3

TYPICAL SECTIONS



TYPICAL SECTION 3
SR 61
STA. 1156+63.36 TO STA. 203+11.41

NOT TO SCALE

TRAFFIC DATA

CURRENT YEAR = 2021 AADT = 31,500
 ESTIMATED OPENING YEAR = 2025 AADT = 32,800
 ESTIMATED DESIGN YEAR = 2045 AADT = 39,100
 K = 9% D = 63.8% T = 4.29% (24 HOUR)
 DESIGN HOUR T = 2.14%
 DESIGN SPEED = 45 MPH
 POSTED SPEED = 45 MPH
 TARGET SPEED = 45 MPH
 CONTEXT CLASSIFICATION = C3R

SHARED USE PATH

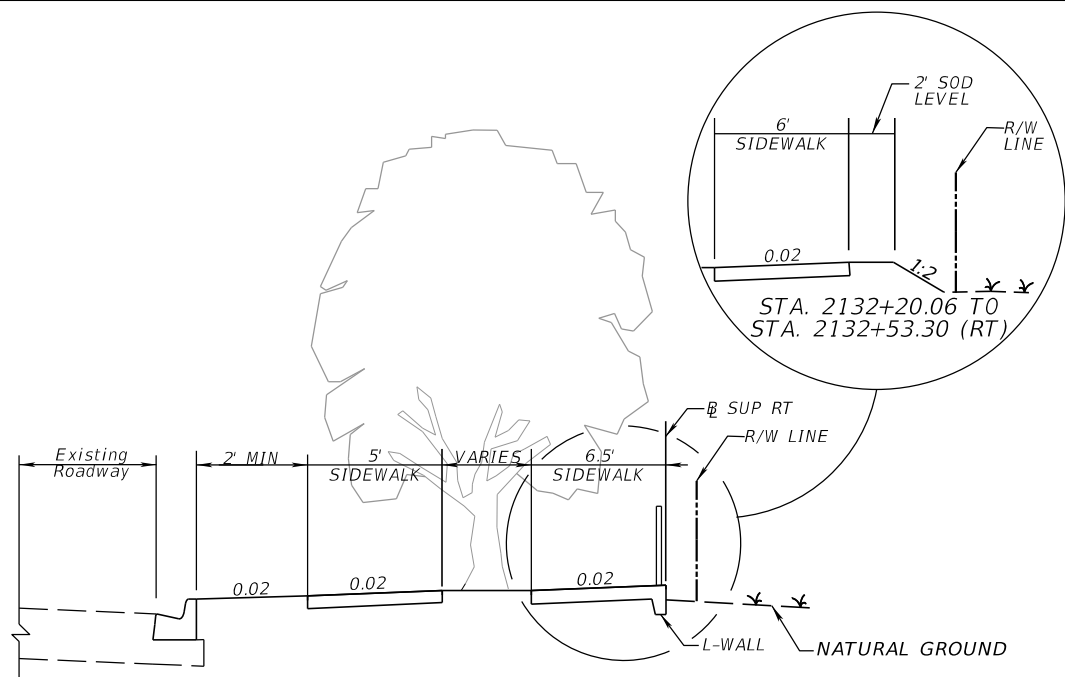
DESIGN SPEED = 18 MPH (GRADES ≤ 4%)
 DESIGN SPEED = 30 MPH (GRADES > 4%)

SHARED USE PATH
 OPTIONAL BASE GROUP 1
 TYPE SP STRUCTURAL COURSE (1 1/2")

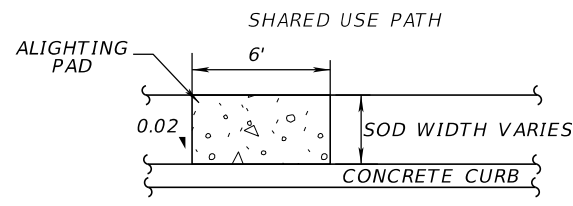
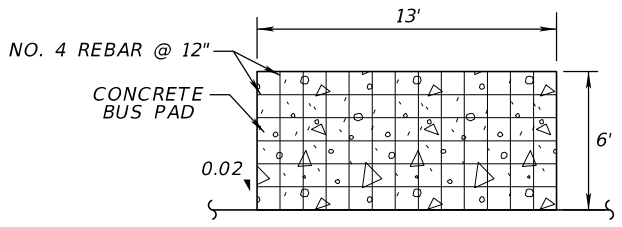
4/21/2023 2:00:09 AM W:\R99276 c:\users\z0r8664\appdata\local\pro\jectwise\workdir\mat-use-pw-13\dms41202\TYPED01.dgn

THE OFFICIAL RECORD OF THIS SHEET IS THE ELECTRONIC FILE DIGITALLY SIGNED AND SEALED UNDER RULE 61G15-23.004, F.A.C.

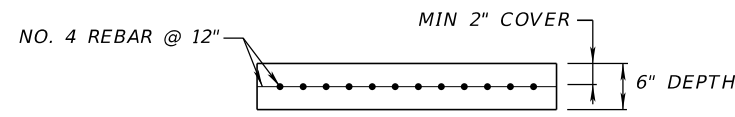
REVISIONS				ENGINEER OF RECORD	STATE OF FLORIDA DEPARTMENT OF TRANSPORTATION			SHEET NO.
DATE	DESCRIPTION	DATE	DESCRIPTION		ROAD NO.	COUNTY	FINANCIAL PROJECT ID	
	Preliminary, Subject to Change Phase II Submittal, April 21, 2023			JAMES J. JOHNSON, P.E. LICENSE NUMBER: 62546 MOTT MACDONALD FLORIDA, LLC. 1300 TIMBERLANE ROAD TALLAHASSEE, FLORIDA 32312	SR 61	LEON	448868-1-52-01	TYPICAL SECTIONS



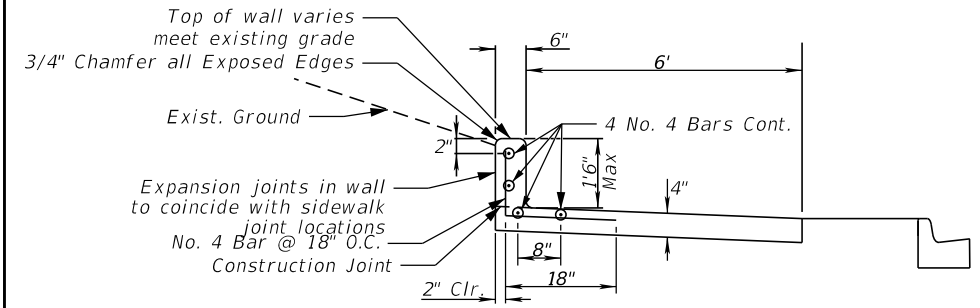
DIVIDED PATH DETAIL
 STA. 2131+67.58 TO STA. 2132+02.06 (RT)



BUS STOP PAD DETAIL

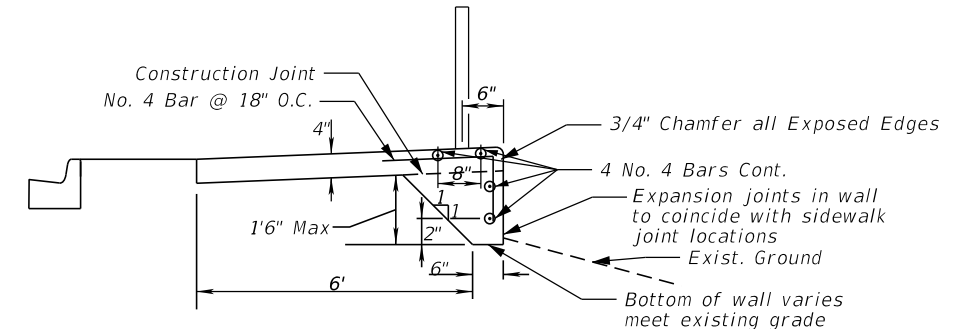


BUS STOP PAD DETAIL (SIDE VIEW)



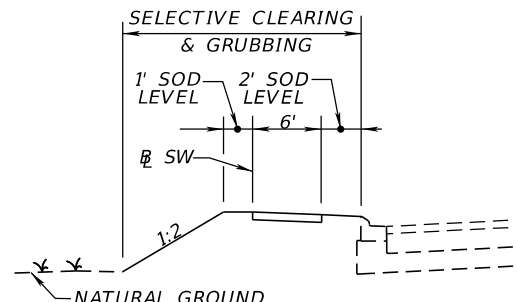
L-WALL DETAIL (CUT)

STA. 1117+20.00 TO STA. 1118+50.00 (LT)
 STA. 244+37.00 TO STA. 245+12.00 (LT)
 STA. 246+32.00 TO STA. 246+81.00 (LT)

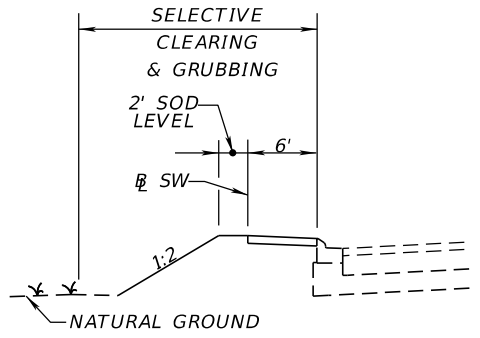


L-WALL DETAIL (FILL)

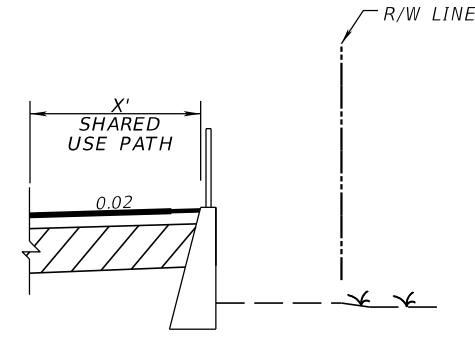
STA. 2131+73.64 TO STA. 2131+96.07 (RT)



SIDEWALK ALONG EXISTING CURB
 STA. 1114+18.11 TO 1124+79.44 (LT)
 2124+79.57 TO 2125+77.13 (LT)

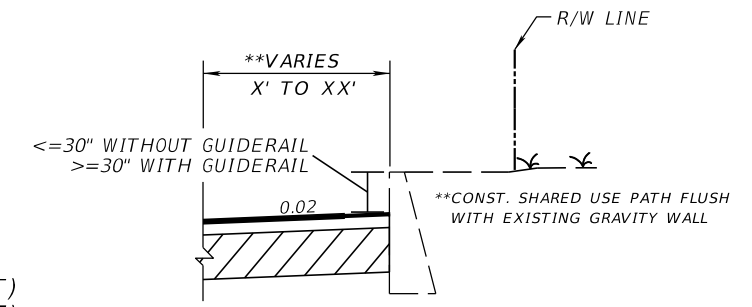


SIDEWALK BEHIND CURB
 STA. 249+47.60 TO STA. 249+79.45 (LT)



NB GRAVITY WALL (FILL)

STA. 1100+60.53 TO STA. 1101+08.00 (RT)
 STA. 1101+53.00 TO STA. 1101+96.00 (RT)
 STA. 2131+30.00 TO STA. 2132+54.50 (RT)



SHARED USE PATH AT EXISTING GRAVITY WALL DETAIL

STA. 1156+76.28 TO STA. 1160+19.65 (LT)

MIRROR DETAIL FOR SB GRAVITY WALL (FILL)

STA. 1162+00.00 TO STA. 1163+00.00 (LT)
 STA. 1177+80.00 TO STA. 1178+84.50 (LT)
 STA. 1179+25.50 TO STA. 1181+08.50 (LT)
 STA. 1181+43.50 TO STA. 1183+53.50 (LT)
 STA. 200+42.00 TO STA. 202+68.00 (LT)

4/21/2023 2:00:09 AM W:\R99276 c:\users\z0r86694\appdata\local\pro\jectwise\workdir\mat-use-pw-13\dms41202\TYPED001.dgn

REVISIONS		ENGINEER OF RECORD	
DATE	DESCRIPTION	DATE	DESCRIPTION

JAMES J. JOHNSON, P.E.
 LICENSE NUMBER: 62546
 MOTT MACDONALD FLORIDA, LLC.
 1300 TIMBERLANE ROAD
 TALLAHASSEE, FLORIDA 32312

STATE OF FLORIDA DEPARTMENT OF TRANSPORTATION		
ROAD NO.	COUNTY	FINANCIAL PROJECT ID
SR 61	LEON	448868-1-52-01

TYPICAL SECTION DETAILS

SHEET NO.
5

THE OFFICIAL RECORD OF THIS SHEET IS THE ELECTRONIC FILE DIGITALLY SIGNED AND SEALED UNDER RULE 61G15-23.004, F.A.C.

**Preliminary, Subject to Change
 Phase II Submittal, April 21, 2023**