

# US 90 WEST

## TRAIL FEASIBILITY STUDY

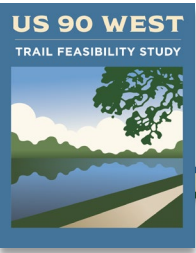


Project Update

**CRTPA Board Retreat**

Monday, January 12, 2026

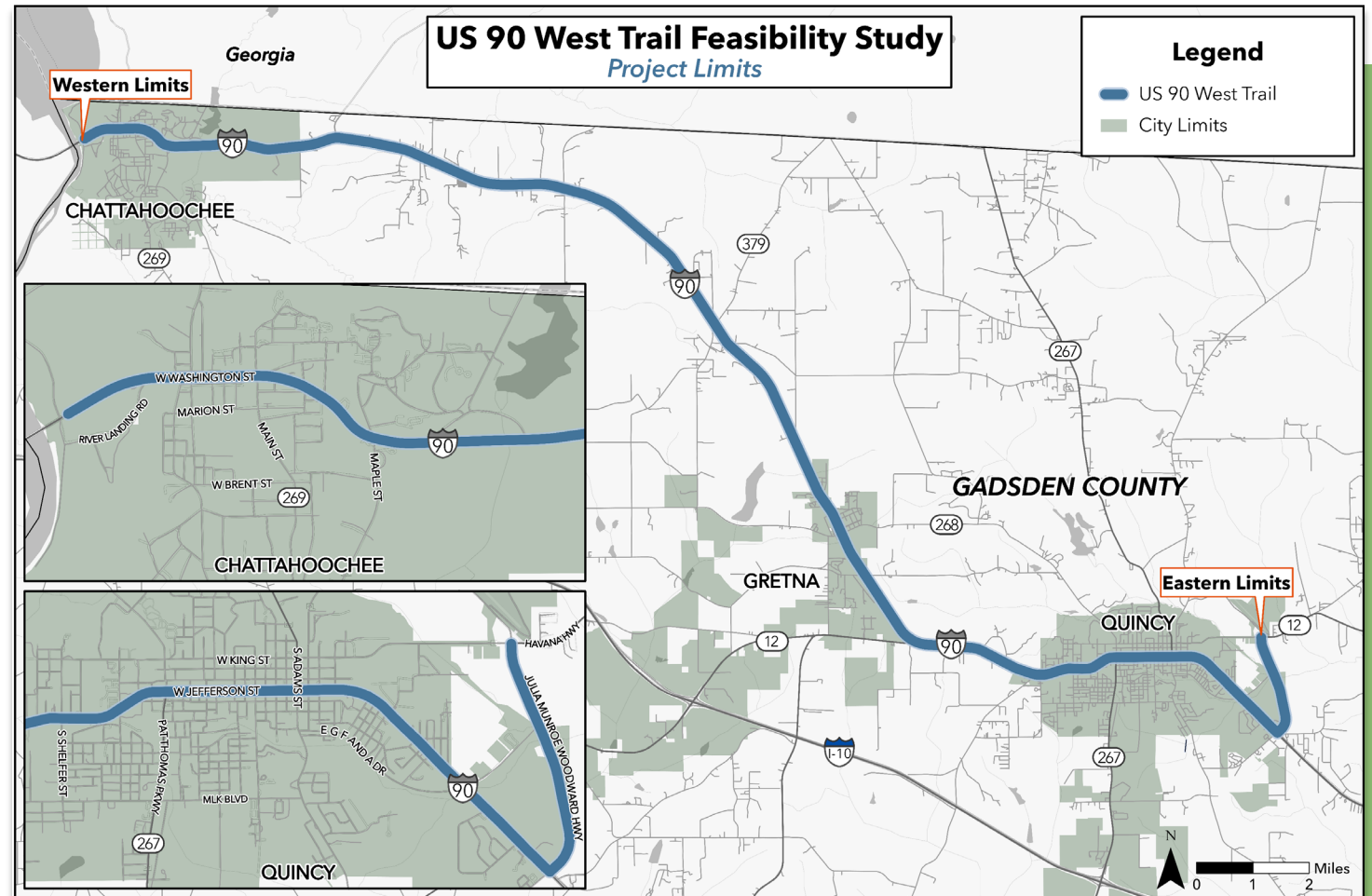
# Project Background



- **Project Limits:** US 90 from Jackson County Line (western limit) to SR 12 at Quincy Bypass/Julia Munroe Woodward Highway/SR 269 (eastern limit)
- **Project Length:** ~22 miles
- Funded by SUN Trails in 2024

## Two-Phased Approach:

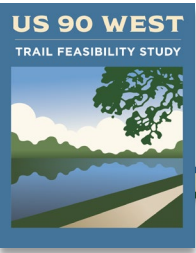
- **Phase 1:** Existing Conditions Assessment and Stakeholder Engagement - Fall 2025 (**Completed**)
- **Phase 2:** Public Engagement and Feasibility Report - Spring 2026



*Project Limits Map*



# Project Goals

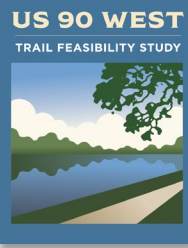


- Enhance **safety** for all users
- Establish **continuous multimodal connectivity** from Chattahoochee to Quincy
- Provide **alternative transportation** and **recreational opportunities** for residents, businesses, and visitors along the US 90 corridor in Gadsden County
- Expand **the SUN Trails Regional Network** in the Capital Region
- Enhance **economic development and tourism**

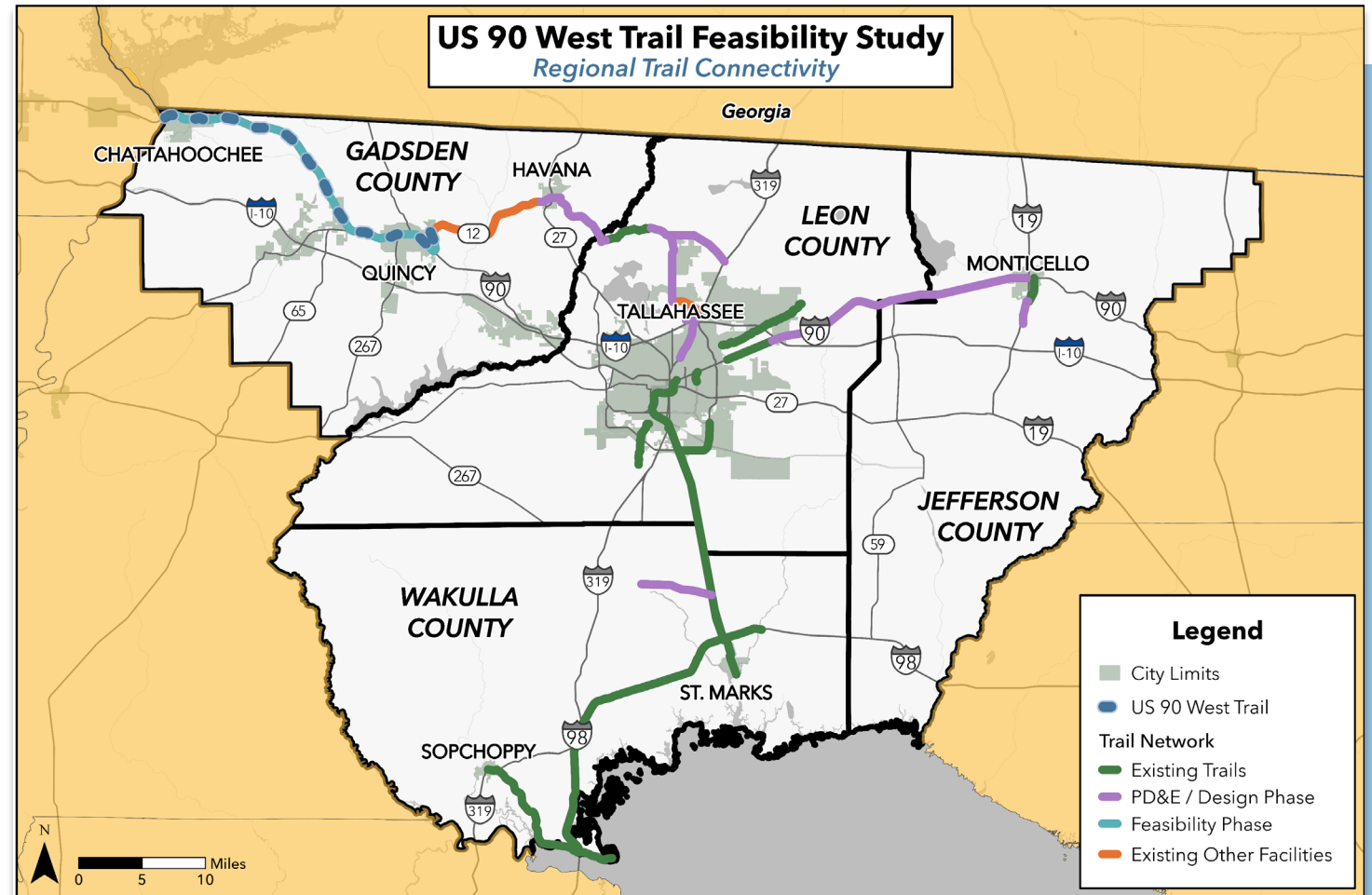


*US 90 in Gadsden County*

# US 90 West Connectivity

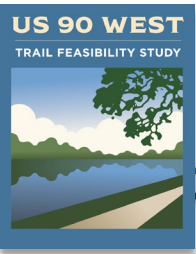


- **Local Connectivity:** Connects Chattahoochee, Quincy, and Havana within Gadsden County
- **Regional Connectivity:** Links to Leon County's Orchard Pond Greenway, Tallahassee's urban trail network, and the Capital City to the Sea network.
- **Statewide Networks:** Links the CRTPA's regional trail network to SUN Trail and FDEP Office of Greenways and Trails priorities in North Florida, including US 90 from Pensacola to Jacksonville.



*Regional Trail Connectivity Map*

# Existing Conditions



- **City of Chattahoochee**

- Characteristics: 25-45 mph, two-lane bidirectional; various combinations of shoulder, sidewalks, on-street parking within city limits.
- Challenges: Limited ROW, elevation and grade, commercial driveways, speeding

- **City of Gretna**

- Characteristics: 45-55 mph, two-lane bidirectional; shoulder, sidewalk on west side within city limits
- Challenges: Limited ROW, speeding

- **City of Quincy:**

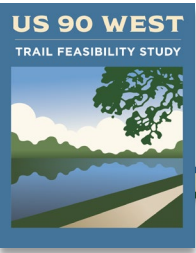
- Characteristics: 25-55 mph, four-lane bidirectional; various combinations of center turn lane, landscaped median, on-street parking, shoulders, and sidewalks within city limits.
- Challenges: Limited ROW, elevation and grade, commercial driveways, speeding

- **US 90 In Between:**

- Characteristics: 55 mph, two-lane bidirectional; various shoulder widths
- Challenges: Limited ROW, elevation and grade, natural features, speeding

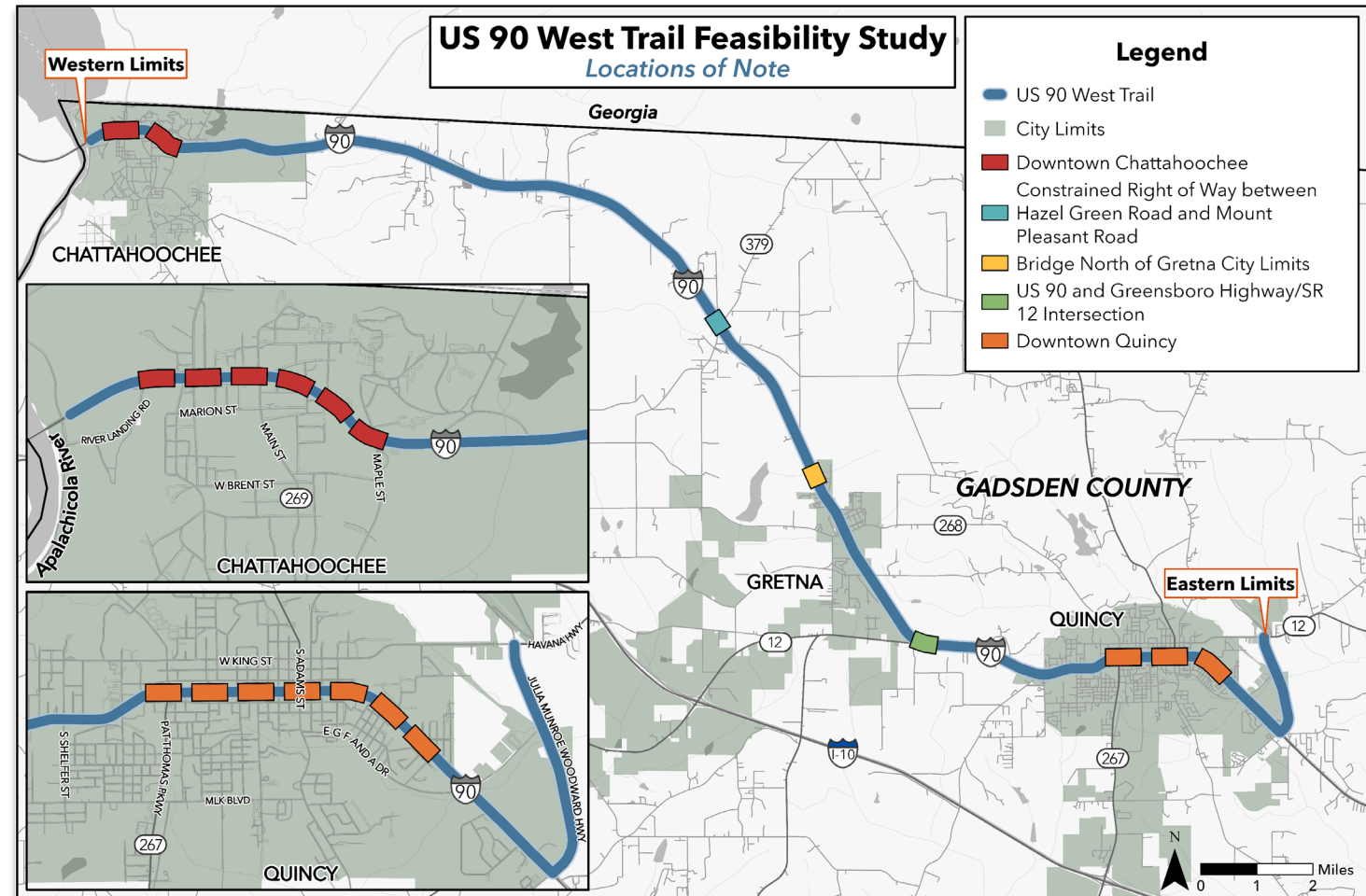


# Study Area Locations of Note



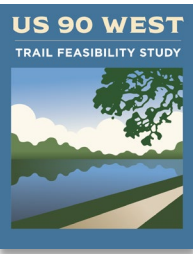
The following areas are characterized by **constrained right-of-way, natural features, or severe sloping or grading**:

- Downtown Chattahoochee and Quincy
- Between Hazel Green Road and Mount Pleasant Road
- Bridge North of Gretna City Limits
- US 90 and Greensboro Highway/SR 12 Intersection



*Locations of Note Map*

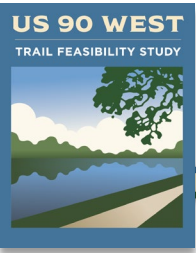
# Initial Stakeholder Engagement



Initial Stakeholder meetings were held on August 27, 2025.

Stakeholder	Attendees	Location	General Feedback
<b>City of Quincy</b>	Richard Ash	Quincy City Hall	<ul style="list-style-type: none"><li>• Generally favorable by local boards, commissions, and leaders.</li><li>• Shared preferences for trail location and connectivity within each community.</li><li>• Noted concerns about pedestrian safety.</li><li>• Existing facilities are heavily used by residents in each community.</li></ul>
<b>Gadsden County Public Works</b>	LaKysha Perkins Curtis Young	Gadsden County Public Works Building	
<b>City of Gretna</b>	Antonio Jefferson	Gretna City Hall	
<b>City of Chattahoochee</b>	Robert Presnell	Chattahoochee City Hall	

# What's Next?



- Develop trail alternatives
- Conduct stakeholder and public engagement
- Finalize alternatives, identify preferred alternative, and develop recommendations
- Develop Feasibility Study report

**ANTICIPATED PROJECT  
COMPLETION:**  
*Summer 2026*



*Downtown Quincy*





# Questions?



Kimley»Horn